

 **PROMESH**

RENDER & PLASTER REINFORCING MESH



## ■ ProMesh

ProMesh reinforcing mesh is ideal for reinforcing render and plaster, particularly around openings and areas of traditional weakness. It can be used to stabilise surfaces, cover and help prevent cracking. It is a flexible lattice made from special woven glass-fibre strands offering incredible strength when embedded into wet render or plaster.

## ■ Features & Benefits

- Lightweight
- Versatile - Compatible with all major plasters and renders
- Cost-effective - Low cost material with little or no waste
- Durable - Tear resistance exceeds DIN 53857
- Easy to use - Cut to size with a knife or scissors
- Safe - No sharp edges so no protective clothing required
- Maintenance free - Tear and alkali resistant with anti-slip properties



## ■ Range of Products

### ProMesh Grade 1

Used to reinforce Gypsum plasters and cover internal wall slits up to 50cm in width, in places where low tear strengths are sufficient.

**Rolls:** 1m x 100m **Weight:** 70g/m<sup>2</sup>

**Mesh Aperture:** 4mm x 4mm

**Warp:** 200N/cm, 102kp/5cm

**Weft:** 200N/cm, 101kp/5cm

### ProMesh Grade 2

Used to reinforce Gypsum plasters and cover internal wall slits up to 50cm in width.

**Rolls:** 1m x 100m **Weight:** 110g/m<sup>2</sup>

**Mesh Aperture:** 5mm x 5mm

**Warp:** 310N/cm, 155kp/5cm

**Weft:** 356N/cm, 178kp/5cm

### ProMesh Grade 3 - Red Mesh

Used to reinforce external wall insulation and rendered rainscreen cladding systems.

**Rolls:** 1m x 50m **Weight:** 160g/m<sup>2</sup>

**Mesh Aperture:** 3mm x 3.5mm

**Warp:** 440N/cm, 220kp/5cm

**Weft:** 500N/cm, 250kp/5cm

### ProMesh Grade 4

Used to reinforce exterior render or plaster in places where low tear strengths are sufficient.

**Rolls:** 1m x 50m **Weight:** 130g/m<sup>2</sup>

**Mesh Aperture:** 9.5mm x 9.5mm

**Warp:** 400N/cm, 200kp/5cm

**Weft:** 380N/cm, 190kp/5cm

### ProMesh Grade 5 - Super Strength

Used to reinforce exterior render in places where tear strength is important.

**Rolls:** 1m x 50m **Weight:** 210g/m<sup>2</sup>

**Mesh Aperture:** 5mm x 5mm

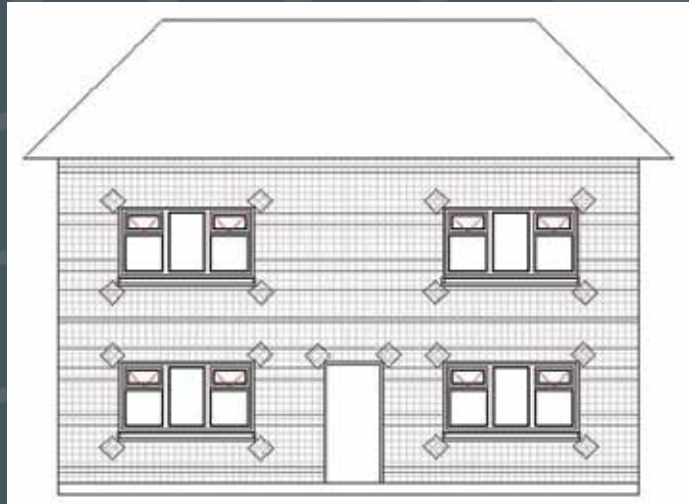
**Warp:** 530N/cm, 265kp/5cm

**Weft:** 550N/cm, 275kp/5cm



## ■ Application

- 1 Elevations must be fully covered with ProMesh
- 2 Mesh must overlap by a minimum of 100mm
- 3 300mm x 300mm squares of mesh at 45° to corners of all openings



■ **PROMESH**  
SAMPLE



## ■ SAS

At SAS we have in excess of 35 years of practical experience in the rendering and plastering industry from personal application of materials to technical troubleshooting on site. We are always striving to improve our service and provide quality information as quickly as possible.

We are constantly developing and innovating new products for the market place to provide the best solutions for rendering and plastering. Our product portfolio contains premium quality products offering longevity to the proprietor as well as technically sound and fast applications to the contractor.

## ■ Nationwide Delivery

Ex stock packaged goods next working day

Ex stock palletised goods 1-3 working days

## ■ Office Hours:

Monday-Thursday - 08:00-17:00

Friday - 08:00-16:30

Information contained in this brochure was correct at the date of print. SAS (Europe) Ltd reserve the right to make alterations to the content of this brochure and to the products and services we make available as part of our continuing commitment to improvement.

## ■ PROMESH

ProMesh is part of the SAS (Europe) Ltd range of products and systems

**SAS** RAINSCREEN | INSULATION | RENDER | MESH | BEADS

### SAS (EUROPE) LTD

CHERITON BISHOP | EXETER | EX6 6JE | UK

T: +44 (0)1647 24620 F: +44 (0)1647 24020

E: [info@sas-europe.com](mailto:info@sas-europe.com)

[www.sas-europe.com](http://www.sas-europe.com)

