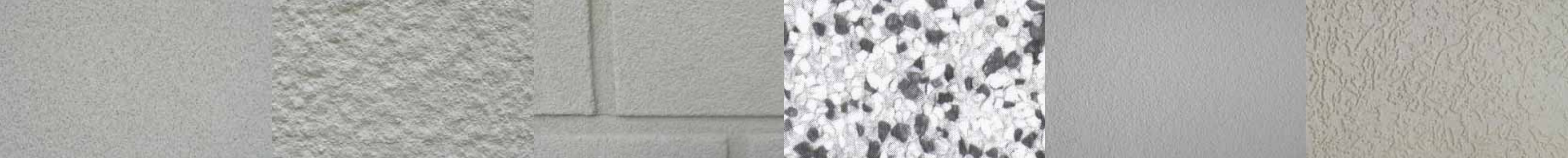


 **PROREND**

PREMIER RENDER SYSTEMS



Contents

• SAS Overview	04
• ProRend Colour	06
• ProRend Colourtex	12
• ProRend Mineraltex	18
• ProRend Basecoats	24
• SAS Good Application Guide	31
• Sundries	32
• ProRend Training College	34

Finish Selector

ProRend	Speed of application (number of coats)	Colours				Finish					
			Light	Dark		Fine scrape	Spray texture	Ashlar detail	Dry dash	Uniform texture	Grained texture
Colour	Fast – apply and scrape (1)	4 standard 12 specials	✓			✓	✓	✓	✓		
Colourtex	Basecoat, primer + finish (3)	65000	✓	✓				✓		✓	✓
Mineraltex	Fast – basecoat + finish (2)	4	✓				✓	✓		✓	

Substrate Checker

	7kN Dense Concrete Block	3.5kN Dense Concrete Block	Lightweight Block	Existing Render Unpainted	New Sand & Cement		Render Carrier Board	Brickwork	Pre-cast Concrete	ICF: Insulated Concrete Form	Expanded Polystyrene	Mineral Fibre Insulation
Colour	✓	✓	✓	✓	✓			✓	✓			
Colourtex	✓	✓	✓	✓	✓†		✓	✓	✓	✓	✓	✓
Mineraltex	✓	✓	✓	✓	✓†			✓	✓	✓	✓	✓

† Direct Application Possible



## Premium Quality Render Manufacturing

At SAS we are constantly striving to deliver the highest quality products to the marketplace. We operate by the ISO 9001:2008 Quality Management System across all of our manufacturing sites ensuring the best standard of products are delivered to you.



Following EU legislation materials are all sourced from REACH registered suppliers.

SAS also recognise the importance of the environment and take every effort to ensure that our actions are as green as possible – indeed when sourcing new products consideration of their green credentials is a key factor. we are proud owners of an ISO 14001:2004 certificate.



## Consultancy Service

SAS (Europe) Ltd are proud to offer our consultancy service to independent governing bodies where they benefit from our outstanding technical services and expertise, from on site identification of issues and their causes to preventative measures and remedial specifications. This service has been utilised on a vast range of properties ranging from semi detached masonry built homes to multi occupancy timber frame apartment blocks.

## Experienced Applicators

Whilst it's very important to have the best render quality and manufacturing, product guarantee and trade body membership, we also recognise the importance of good application.

For specifiers and main contractors we can put you in touch with experienced applicators who:

- Have experience of the type of ProRend being used on your job
- Are in a suitable geographic location for the project
- Are of a suitable company size for the project in question

If you are an applicator we offer:

- Training on our products – see ProRend Training College p34/35
- Full details of the projects we put you forward for including detailed specifications
- The opportunity for you to tender specified projects with our main contractors

## Product Guarantee

The ProRend product guarantee covers ProRend renders for 10 years subject to product application in accordance with SAS (Europe) Ltd specification and instruction.



Problem free products are dependent upon the quality of application as well as the materials supplied. We recommend the use of our experienced applicators wherever possible and encourage attendance at our ProRend Training College for all applicators.

In practice the lifespan of any ProRend render is dependent upon a range of factors including weather conditions. For ProRend renders maintained as directed by SAS (Europe) Ltd, practice indicates a much longer life expectancy.

## Technical Service

We are proud of our level of technical knowledge and customer service and provide the following services:

Technical Specification service – simply let us know the details of the project from building substrate to desired finish. We will be able to advise you on the benefits and weaknesses of the different options. We will then issue:

- Written specification document including materials and application instructions
- Technical, safety and maintenance datasheets
- U-value calculations if applicable

Site support – for queries before, during or after the project our internal technical team will be happy to answer any query you have. Alternatively, we can arrange for one of the Regional Sales Managers to attend site and run through details with you in person.

Samples – the modern key to the best projects. We understand that projects almost always require a finish sample to see on site. Taking that to the next level we can provide build-up samples to show visually how it all fits together or arrange materials for the applicator to make a panel up on site.





## PROREND COLOUR

ProRend Colour is a premium factory batched proprietary silicone monocouche render. This attractive mica containing through-colour render provides an ideal mineral finish for masonry type substrates. It has an attractive 2mm fine-scraped finish.

## Ideal Substrates

- 7kN, 3.5kN and lightweight blockwork
- Existing render unpainted
- New sand and cement
- Brickwork
- Pre-cast concrete

## Features



- Fast application, just 1 day in best weather conditions:
  - Apply in 1 coat to specified thickness and scrape when ready
  - Spray machine or hand apply
- Highly water resistant finish due to silicone properties that will protect the outer skin of any property from the elements
- Reduced risk of cracking compared to other monocouche renders or traditional sand and cement due to water retention agents ensuring thorough curing
- Reduced dusting when mixing compared to other monocouche renders
- Apply from 15 - 25mm and cut to achieve ashlar or other detailing designs

## Maintenance

One of the biggest benefits of ProRend Colour is the low cost of maintenance, this is one of the most important factors for any proprietor. The benefits are:

- Maintain ProRend Colour by pressure washing to clean away dirt or organic material. **No painting required**
- Overcoat ProRend Colour easily for a fresh look if you desire







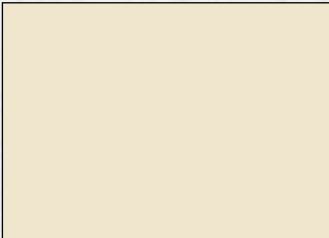
## Colour Palette

ProRend Colour is available in 16 colours to give you more choice and more freedom in design.

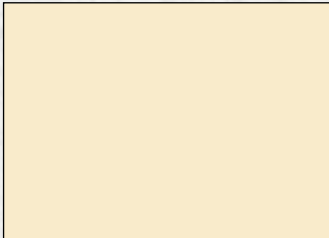
Colours indicated below are as close as printing techniques permit. Please contact us directly for physical samples.



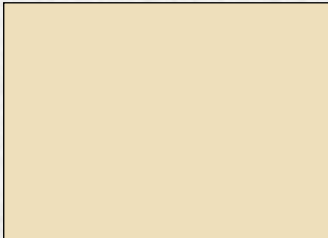
WHITE\*



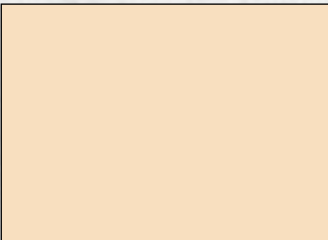
IVORY\*



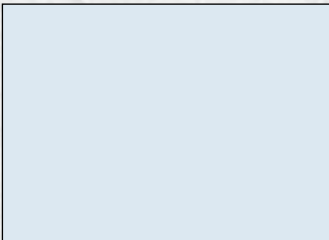
CREAM



WHEAT



FAWN



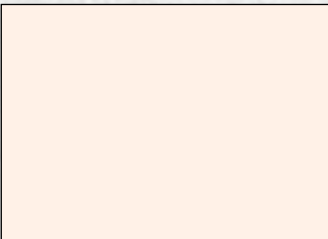
OCEAN



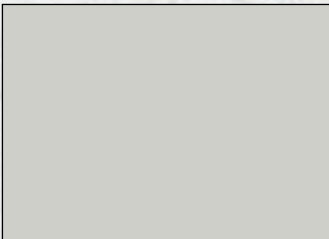
BRICK



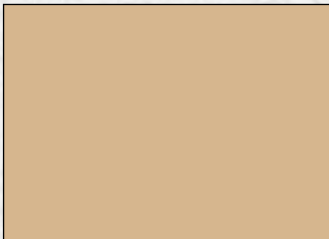
SAGE



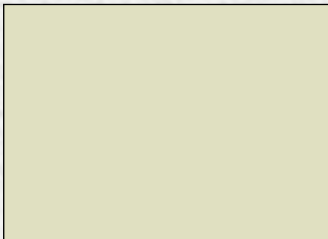
PEACH



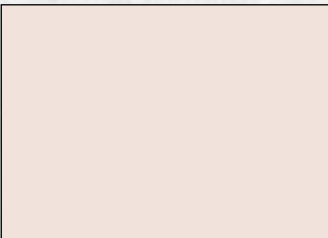
AFRICAN GREY



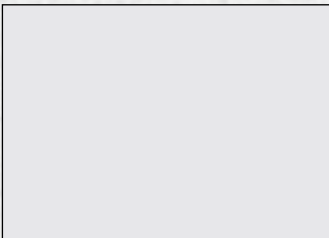
BAMBOO



WILLOW



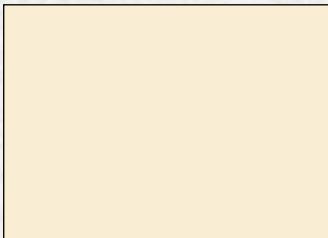
CANDY



DOVE



COTTAGE



PRIMROSE

\*Stock colours at time of print

## Simple Application

The substrate must initially be prepared in accordance with the technical specification for the project. This may include the use of an SAS basecoat or primer as directed.

Apply ProRend Colour to a thickness of 17mm in 2 passes. Apply the first coat at 7mm thick with a hawk and trowel embedding ProMesh Grade 5 around stress areas. Immediately repeat the application with a second coat at 10mm thick so that the application is “wet on wet”.

Use an aluminium straight edge to rule off the wall after the second coat and spatula flat.

When the ProRend Colour is sufficiently dry it will be ready to scrape. To test the readiness to scrape mark the render with your thumb. It is ready to scrape when you can no longer mark the render with your thumb but are able to mark it with your nail: the ProRend Colour is ready but green. The time of scrape will be dependent upon weather conditions and typically varies from 4 – 16 hours.

Using the nail float, sometimes called a scraper, the top 2mm of render is scraped off the wall by moving the float in circular motions to achieve a finish depth of 15mm. The wall is then brushed down gently to remove dust.

Contact our Technical team on 01647 24620 for a detailed specification of application for your project.

Note the “Simple application” guidelines provided here may not be appropriate for every substrate. SAS (Europe) Ltd take no responsibility for application based upon guidelines provided within this brochure especially when a specification has not been provided. To avoid any unnecessary visual scars or blemishes to the final finish, it is highly recommended that ProRend Colour is applied by a plasterer competent in the application of Monocouche renders.



Application



Ruling Off



Scraping





## Technical Data

## General Information

- Packaging, kg 25
- Bags / pallet 40
- Water, l ~5
- Coverage, kg/mm/m<sup>2</sup> 1.8
- Shelf life, months ~6
- Curing, mm/day 1

## Technical Data EN 998-1: 2010

- L1 - Bulk density, kg/m<sup>3</sup> ~1.40
- L1 - Set mortar density, kg/m<sup>3</sup> ~1.30
- L2 - Compressive strength, N/mm<sup>2</sup> ~3.50
- L8 - Water vapour permeability,  $\mu$  (EN 1745:2002 4.2.1 Table A12) 5/20

## Additional Technical Data

- Maximum grain size, mm ~2.00
- E module, coefficient of elasticity, N/mm<sup>2</sup> ~2,700.00
- Bending strength, N/mm<sup>2</sup> ~1.50
- Mortar group, DIN V 18550 PII

<div>CE</div>	
SAS (Europe) Ltd Cheriton Bishop Exeter EX6 6JE SASPC2013-01 04	
EN 998-1:2010 Coloured rendering (CR) Coloured rendering for internal and external use	
Reaction to fire	A1
Adhesion	$\geq 0.08$ N/mm <sup>2</sup>
Fracture pattern	A, B or C
Water absorption	W2
Water vapour diffusion coeff	15/35 (EN 1745 Table .12)
Thermal conductivity, $\lambda_{10, \text{dry, mat}}$	$\leq 0.82$ W/mK (P=50%) $\leq 0.89$ W/mK (P=90%) (EN 1745 Table A12)
Durability	No performance determined
Dangerous Substances	No performance determined

## Detailing

ProRend Colour can be used to form many details. The same principle of cutting into the render at the point of scraping can be used to create quoin stones, key stones, feature bands and ashlar grooves.



To create a feature band battens should be fixed in place prior to any render application and a thin basecoat should be applied between the battens and left with a key. It is important that this basecoat is thinner than the finished thickness of the surrounding render so it will not be visible when the finish is scraped.

Apply the ProRend Colour between the battens and build up to the desired thickness. All areas must exceed the required finished thickness by a minimum of 2mm as the render needs to be scraped to achieve the final finish.



Once the finish is ready to scrape use a preformed cutting tool across the length of the entire band wearing it down to the correct form. Once fully cured the battens may be removed and the remaining render finished to the edge of the band.

For more in depth information on detail work please contact the SAS Technical Team, or for information about training on the application of these details please see details of the ProRend Training College on page 34/35.



## PROREND COLOURTEX

ProRend Colourtex is a premium factory batched proprietary silicone resin thin-coat render. This attractive render is available in a wide range of colours including NCS, RAL and our own range. It is suitable for application onto the widest range of substrates with an appropriate ProRend basecoat and is available in 2 textured finishes: Uniform 1.5mm and Grained 3mm.

## Ideal Substrates

- 7kN, 3.5kN and lightweight blockwork
- Existing render unpainted
- New sand and cement
- Brickwork
- Pre-cast concrete
- Render carrier board
- Insulation including: expanded polystyrene, mineral fibre, and insulated concrete form (ICF)

## Features



- Highly flexible silicone resin finish that can accommodate small movements in substrate
- Wide range of colours with increased colour – fastness due to coloured primer
- Ease of application by hand or spray machine – hand finish with ProRend Colourtex PVC float
- Highly water resistant finish due to silicone resin protects the outer skin of any property from driving rain
- Low maintenance synthetic resin finish – see below
- Ease of repair

## Maintenance

ProRend Colourtex is a low maintenance render. The benefits are:

- Maintain ProRend Colourtex by pressure washing to clean away any dirt or organic material
- Overcoat ProRend Colourtex with paint to maintain the longevity of the system. Painting is required periodically at least every 12 years depending upon site conditions – refer to SAS maintenance datasheet for further details







## ■ Textures

ProRend Colourtex is available in 2 attractive textures shown below: 1.5mm Uniform or 3mm Grained.

Uniform, as the name suggests, is a tight even finish similar to that of painted sand and cement.

### ■ UNIFORM



Grained is a highly textured rustic finish, creating a dragged texture that can be finished in random motions or with a vertical finish to achieve a traditional alpine effect.

For colour samples of either finish please contact us directly.

### ■ GRAINED



## ■ Colour Tinting And Matching

ProRend Colourtex is tinted at our colouring plant in the UK. The colours are based upon the popular NCS Colour System.

The standard colour range consists of popular colours which are sold throughout the UK. We are also able to provide colour matches to any RAL, NCS or BS colours.

Choose whatever colour you require and we will provide you with a sample.



## ■ Simple Application

The substrate must initially be prepared in accordance with the technical specification for the project. This will usually include the use of a ProRend basecoat applied to the thickness directed for the particular substrate and may include the use of ProMesh render reinforcing at an appropriate grade for the materials being used. The basecoat is flat finished as appropriate.

ProRend Colourtex Primer is applied across the entire area using brush or roller a minimum of 24 hours before the final coat. The primer is coloured the same as the final render coat ensuring a continuous colour; it also contains quartz which provides a fine sandpaper-like key for good adhesion of the ProRend Colourtex. Failure to use the primer can result in poor colour consistency and coverage of the final coat.

ProRend Colourtex is applied using a hawk and trowel tight to the thickness of the grain: Uniform 1.5mm; Grained 3mm. It is important to pull the material out as much as possible to achieve the correct coverage. Always maintain a wet edge between scaffold lifts at all times.

Finish the ProRend Colourtex with a PVC finishing float, typically within 10 – 20 minutes of application, by agitating the grain to achieve the desired texture.

Contact our Technical team on 01647 24620 for a detailed specification of application for your project.

Note the “Simple application” guidelines provided here may not be appropriate for every substrate. SAS (Europe) Ltd take no responsibility for application based upon guidelines provided within this brochure especially when a specification has not been provided.



■ Primer



■ Top Coat Application



■ Finishing





## ■ Technical Data

### ProRend Colourtex Primer

#### ■ General Information

- Packaging, kg 16
- Buckets / pallet 44
- Water, l 5-10% maximum dilution
- Coverage, m<sup>2</sup>/bucket 35
- Shelf life, years ~2
- Surface drying 24 hrs

#### ■ Technical Data EN 998-3: 2006

- L1 - Bulk density, kg/m<sup>3</sup> ~1.60

#### ■ Additional Technical Data

- Viscosity 29,000 - 31,000 m Pas
- pH ~7.9

### ProRend Colourtex Uniform / Grained

#### ■ General Information

- Packaging, kg 17
- Buckets / pallet 44
- Water, l - maximum dilution 2%
- Coverage, m<sup>2</sup>/bucket
  - Uniform ~6 - 6.5
  - Grained ~4.5 - 5
- Shelf life, years ~2
- Surface drying 24 hrs
- Through dry 48-72 hrs

#### ■ Technical Data EN 998-3: 2006

- L1 - Bulk density, kg/m<sup>3</sup> ~1.70

#### ■ Additional Technical Data

- Maximum grain size, mm ~3
- Viscosity 450 Pas
- pH ~8
- Water absorption coefficient W = 0.1 kg/m<sup>2</sup>

## ■ Ashlar Detailing

Ashlar detail effects can be easily created using the ProBead AD25 profile.

Initially the bead is fitted to the substrate in the same way as normal beads using mechanical fixings or render as an adhesive.

ProRend basecoat is then applied to the substrate as per the SAS specification. The finished depth of the basecoat should be the grain thickness of the ProRend Colourtex finish (1.5mm or 3mm) less than the height of the AD25 ProBead profile. The basecoat is left to dry as directed.

Following normal ProRend Colourtex application instructions the ProRend Colourtex Primer is applied using a brush or roller – see Simple Application section.

Finally the ProRend Colourtex Finish coat is applied as directed.

This method of Ashlar detailing can also be used with the ProRend Colour and ProRend Mineraldex products:

- ProRend Colour requires application 2mm thicker than the ProBead AD25 profile so that following the scraping process the render is flush with the bead
- ProRend Mineraldex follows the process described here and will not require the primer stage

For more in depth information on Ashlar Detailing please contact the SAS Technical Team, or for information about training on the application of thesedetails please see details of the ProRend Training College on page 34/35.



■ ProBead AD25 With Basecoat

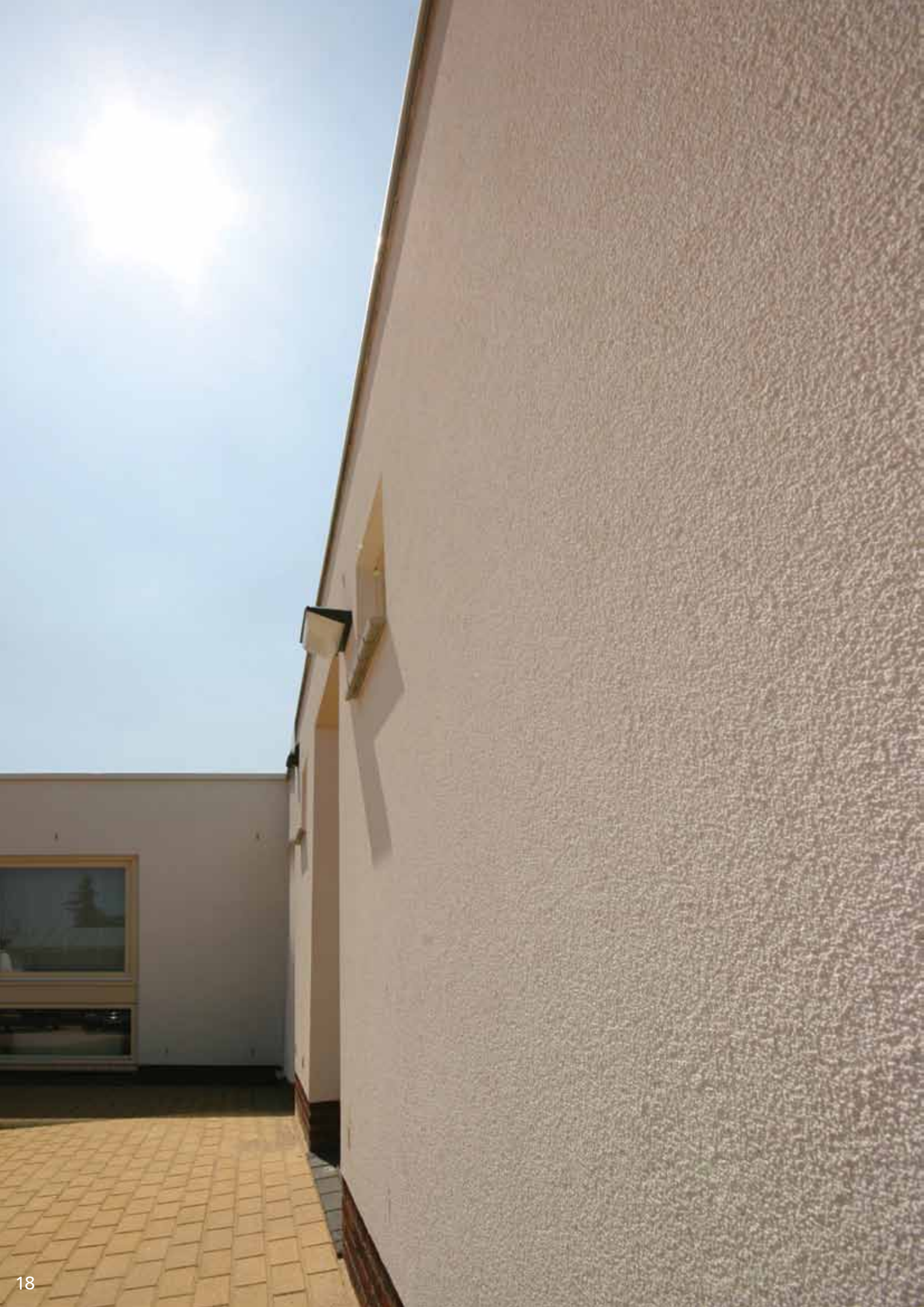


■ ProRend Colourtex Primer



■ Finishing





## **PROREND MINERALTEX**

ProRend Mineraltex is a premium factory batched proprietary mineral thin-coat render. This attractive through-colour render provides an ideal mineral finish for masonry type substrates and has an attractive 2mm uniform finish.

### **Ideal Substrates**

- 7kN, 3.5kN and lightweight blockwork
- Existing render unpainted
- New sand and cement
- Brickwork
- Pre-cast concrete



### **Features**

- Scratch proof and chip proof mineral based render that is resistant to driving rain
- Hand apply with hawk and trowel: finish with ProRend Mineraltex sponge float
- Speed of application - cover large areas quickly
- Low tension render system due to 2 coat application
- Low maintenance mineral finish – see below
- Ease of repair

### **Maintenance**

ProRend Mineraltex is a low maintenance render. The benefits are:

- Maintain ProRend Mineraltex by power-washing to clean away any dirt or organic material.
- Overcoat ProRend Mineraltex with paint to maintain the longevity of the system. Painting is required periodically at least every 12 - 14 years depending upon site conditions – refer to SAS maintenance datasheet for further details.

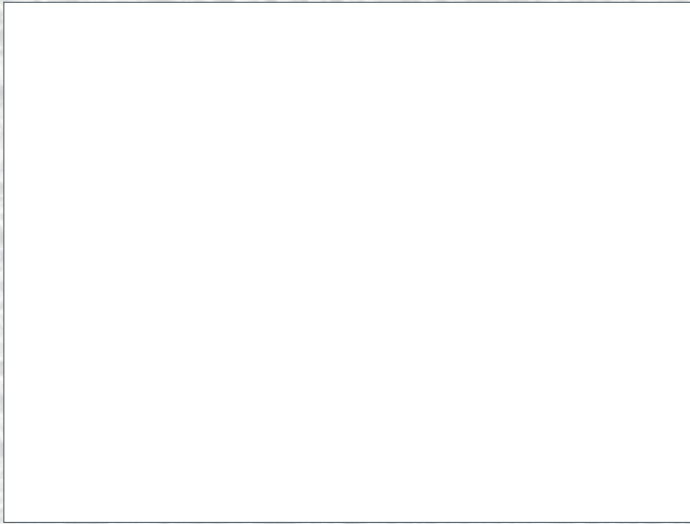




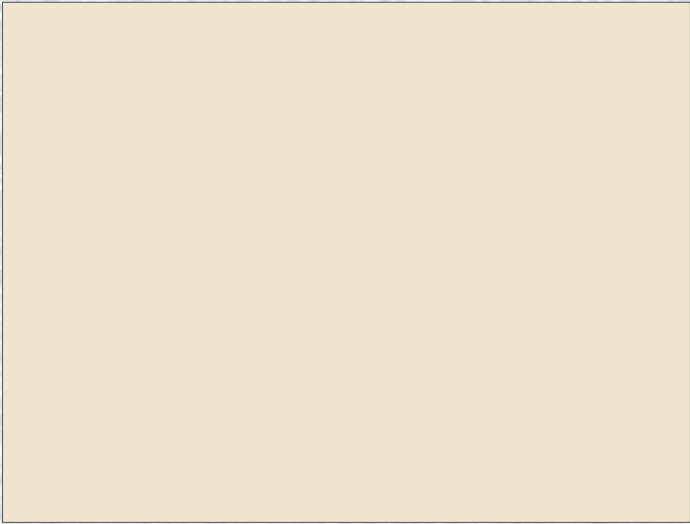


## ■ Colour Palette

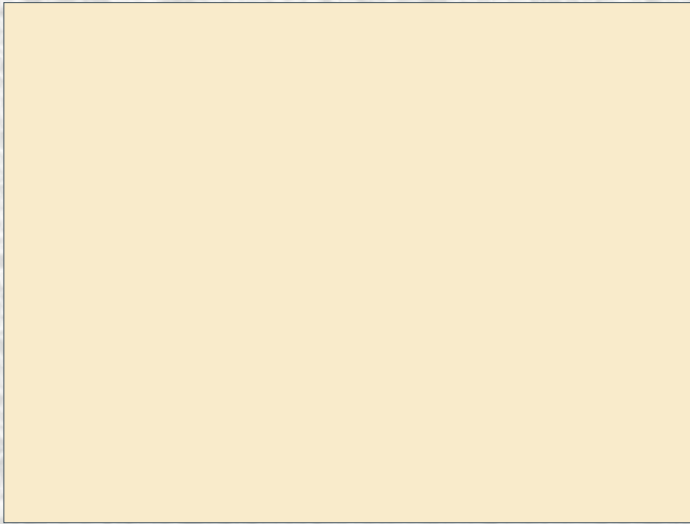
ProRend Mineraltex is available in four of the most popular colours to complement residential design. Alternatively ProRend Mineraltex can be painted with ProRend Water-Repellent Masonry Paint or ProRend Self-Clean Masonry Paint. The ProRend range of masonry paints can be tinted to 35,000+ colours including RAL, NCS or BS colours



White



Ivory\*



Cream\*



Wheat\*

\*Non stock colours, made to order

## ■ Simple Application

The substrate must initially be prepared in accordance with the technical specification for the project. This will include the use of an SAS basecoat applied to the thickness directed for the particular substrate and may include the use of ProMesh render reinforcing at an appropriate grade for the materials being used. The basecoat is flat finished as appropriate.

ProRend Mineraltex is applied using a hawk and trowel tight to the thickness of the grain: 2mm. It is important to pull the material out as much as possible to achieve the correct coverage. Always maintain a wet edge between scaffold lifts at all times.

Finish the ProRend Mineraltex with a sponge finishing float, typically within 10 – 20 minutes of application, by agitating the grain to achieve the desired texture.

Contact our Technical team on 01647 24620 for a detailed specification of application for your project.

Note the “Simple application” guidelines provided here may not be appropriate for every substrate. SAS (Europe) Ltd take no responsibility for application based upon guidelines provided within this brochure especially when a specification has not been provided.



■ Top Coat Application



■ Finishing





## Technical Data

## General Information

- Packaging, kg 25
- Bags / pallet 40
- Water, l ~7.5
- Coverage, kg/mm/m<sup>2</sup> ~3.0
- Shelf life, months ~6
- Curing, mm/day 1

## Technical Data EN 998-1: 2010

- L1 - Bulk density, kg/m<sup>3</sup> ~1.4
- L1 - Set mortar density, kg/m<sup>3</sup> ~1.33
- L2 - Compressive strength, N/mm<sup>2</sup> ~3.50
- L8 - Water vapour permeability,  $\mu$  (EN 1745:2002 4.2.1 Table A12) 5/20

## Additional Technical Data

- Maximum grain size, mm ~2.00
- E module, coefficient of elasticity, N/mm<sup>2</sup> ~2,700.00
- Bending strength, N/mm<sup>2</sup> ~1.50
- Mortar group, DIN V 18550 PII

<div>CE</div> <div>           SAS (Europe) Ltd            Cheriton Bishop            Exeter            EX6 6JE            SASPMTX2013-01            04         </div>	
EN 998-1 Coloured rendering mortar (CR), CS II for internal and external use	
Reaction to fire	A1
Adhesion	$\geq 0.08$ N/mm <sup>2</sup>
Fracture pattern	A, B or C
Water absorption	W2
Water vapour diffusion coeff	$\mu \leq 20$
Thermal conductivity, $\lambda_{10, \text{dry, mat}}$	$\leq 0.83$ W/mK (P=50%) $\leq 0.93$ W/mK (P=90%) EN 1745 Table A12
Durability	Not determined
Dangerous Substances	Not Determined

## Ashlar Detailing

ProRend Mineraltex can be used to form such details as ashlar which can be used to create a block effect.

Initially the ProRend basecoat is applied to the substrate as per SAS specification. The basecoat is left until the surface hardens.

Battens are fixed to the façade in line with the location of the cuts. The ashlar cut is then made using the ashlar detail tool and an appropriate shaped cutter – V shaped and square cutters are the most common.

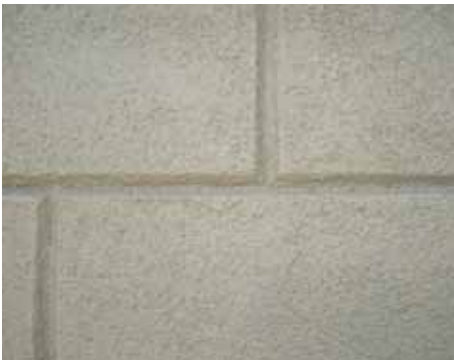
The basecoat is left to dry as directed prior to the application of the ProRend Mineraltex coat using hawk and trowel. This is based upon the same method included in the Simple Application guide in the brochure.

This method of Ashlar detailing can also be used with the ProRend Colour and ProRend Colourtex products:

- ProRend Colour requires standard application and scraping as directed. The ashlar detail tool is used in the same way as the basecoat described above.
- ProRend Colourtex follows the process described here and requires the additional primer coat before finish application.



Ashlar Cut Basecoat



Finishing

For more in depth information on Ashlar Detailing please contact the SAS Technical Team, or for information about training on the application of these details please see details of the ProRend Training College on page 34/35.





Basecoat Selector

ProRend basecoats are a range of factory batched proprietary renders based on Portland cement. All are supplied as dry mortars which only require addition of clean water and mixing.

	7kN Dense Concrete Block	3.5kN Dense Concrete Block	Lightweight Block	Existing Render Unpainted	New Sand & Cement	Render Carrier Board		Brickwork	Pre-cast Concrete	ICF: Insulated Concrete Form	Expanded Polystyrene	Mineral Fibre Insulation
Float	✓	✓	✓†		✓			✓*				
Rapid	✓	✓	✓†					✓*				
Prep			✓	✓	✓			✓	✓			
Lite			✓†			✓				✓	✓	✓

† Applied in conjunction with specified sundry items

\* Subject to specification



ProRend Float

ProRend Float is a high quality factory manufactured dry mortar especially suited to masonry substrates such as blockwork with normal suction.

Ideal Substrates

- 7kN blockwork
- 3.5kN blockwork
- New sand and cement

Features

- Lightweight lime sand cement render
- Hand or machine applied
- Ideal substitute for traditional sand and cement avoiding on-site mixing and gauging
- Suitable basecoat for all ProRend decorative renders or masonry paint
- Can be smooth finished, sponge textured or keyed to receive a subsequent coat

General Information

- |                      |      |
|----------------------|------|
| • Packaging, kg      | 25   |
| • Bags / pallet      | 40   |
| • Water, l           | ~5.7 |
| • Coverage, kg/mm/m² | 1.39 |
| • Shelf life, months | ~6   |
| • Curing, mm/day     | 1    |

Technical Data EN 998-1: 2010

- |  |       |
|--|-------|
| • L1 - Bulk density, kg/m³   | ~1.30 |
| • L1 - Set mortar density, kg/m³                                   | ~1.40 |
| • L2 - Compressive strength, N/mm²                                 | ~3.00 |
| • L8 - Water vapour permeability, μ (EN 1745:2002 4.2.1 Table A12) | 5/20  |

Additional Technical Data

- |  |           |
|--|-----------|
| • Maximum grain size, mm                     | ~2.00     |
| • E module, coefficient of elasticity, N/mm² | ~2,800.00 |
| • Bending strength, N/mm²                    | ~1.40     |
| • Mortar group, DIN V 18550                  | PII       |



SAS (Europe) Ltd Cheriton Bishop Exeter EX6 6JE SASPF2013-01 04	
EN 998-1 Coloured rendering mortar (CR), CS II for internal and external use	
Reaction to fire	A1
Adhesion	≥ 0.08 N/mm²
Fracture pattern	A, B or C
Water absorption	W2
Water vapour diffusion coeff	μ 5/20
Thermal conductivity, λ <sub>10, dry, mat</sub>	≤ 0.39 W/mK (P=50%) ≤ 0.43 W/mK (P=90%) EN 1745 Table A12
Durability	Not determined
Dangerous Substances	Not determined

ProRend Rapid

Based on the general properties of ProRend Float, ProRend Rapid is a fast drying and curing lightweight lime sand cement render basecoat.

Ideal Substrates

- 7kN blockwork
- 3.5kN blockwork
- New sand and cement

Features

- Can be finished after just 2 hours
- Low surface tension between render and substrate due to lightweight additives
- Acts as a thermal insulant after curing
- Hand or machine applied
- Ideal substitute for traditional sand and cement allowing in excess of 15mm application in one coat
- Suitable basecoat for all ProRend decorative renders or masonry paint
- Can be smooth finished, sponge textured or keyed to receive a subsequent coat

General Information

- |                      |      |
|----------------------|------|
| • Packaging, kg      | 25   |
| • Bags / pallet      | 40   |
| • Water, l           | ~7   |
| • Coverage, kg/mm/m² | 1.39 |
| • Shelf life, months | ~6*  |
| • Curing, mm/day     | 2    |

Technical Data EN 998-1: 2010

- |  |       |
|--|-------|
| • L1 - Bulk density, kg/m³   | ~1.30 |
| • L1 - Set mortar density, kg/m³                                   | ~1.20 |
| • L2 - Compressive strength, N/mm²                                 | ~2.50 |
| • L8 - Water vapour permeability, μ (EN 1745:2002 4.2.1 Table A12) | 5/20  |

Additional Technical Data

- |  |           |
|--|-----------|
| • Maximum grain size, mm                     | ~1.00     |
| • E module, coefficient of elasticity, N/mm² | ~2,000.00 |
| • Bending strength, N/mm²                    | ~1.00     |
| • Mortar group, DIN V 18550                  | PII       |



SAS (Europe) Ltd Cheriton Bishop Exeter EX6 6JE SASPR2013-01 04	
EN 998-1 Coloured rendering mortar (CR), CS II for internal and external use	
Reaction to fire	A1
Adhesion	≥ 0.08 N/mm²
Fracture pattern	A, B or C
Water absorption	W2
Water vapour diffusion coeff	μ 5/20
Thermal conductivity, λ <sub>10, dry, mat</sub>	≤ 0.39 W/mK (P=50%) ≤ 0.43 W/mK (P=90%) EN 1745 Table A12
Durability	Not determined
Dangerous Substances	Not determined



ProRend Prep

ProRend Prep is a high quality factory manufactured dry mortar especially suited for levelling and renovation on mineral and synthetic backgrounds. It is well suited to low and high suction backgrounds such as lightweight block or pre-cast concrete.

Ideal Substrates

- Lightweight blockwork
- Existing render unpainted
- Brickwork
- Pre-cast Concrete

Features

- Hand or machine applied
- Ideal for substrates with variable or wide ranging suction
- Suitable basecoat for all ProRend decorative renders or masonry paint
- Can be smooth finished, sponge textured or keyed to receive a subsequent coat

General Information

- Packaging, kg 25
- Bags / pallet 40
- Water, l ~8
- Coverage, kg/mm/m² 1.1
- Shelf life, months ~6
- Curing, mm/day 1

Technical Data EN 998-1: 2010

- L1 - Bulk density, kg/m³ ~1.10
- L1 - Set mortar density, kg/m³ ~1.20
- L2 - Compressive strength, N/mm² ~3.50
- L8 - Water vapour permeability, μ (EN 1745:2002 4.2.1 Table A12) 5/20

Additional Technical Data

- Maximum grain size, mm ~1.00
- E module, coefficient of elasticity, N/mm² ~3,300.00
- Bending strength, N/mm² ~1.70
- Mortar group, DIN V 18550 PII



ProRend Lite

ProRend Lite is a high quality lightweight polymer modified factory manufactured dry mortar. It is ideal for use on insulation and render carrier boards as a basecoat for the ProRend Colourtex range of decorative finishes.

Ideal Substrates

- Render carrier board
- Insulated concrete form (ICF)
- Expanded polystyrene (EPS)
- Mineral fibre insulation

Features

- Hand or machine applied
- Ideal basecoat for ProRend Colourtex range of decorative renders or as a keycoat for other ProRend basecoats
- Can be smooth finished, sponge textured or keyed to receive a subsequent coat

General Information

- Packaging, kg 20
- Bags / pallet 42
- Water, l ~7
- Coverage, kg/mm/m² 0.95
- Shelf life, months ~6
- Curing, mm/day 1

Technical Data EN 998-1: 2010

- L1 - Bulk density, kg/m³ ~0.90
- L1 - Set mortar density, kg/m³ ~1.00
- L2 - Compressive strength, N/mm² ~4.00
- L8 - Water vapour permeability, μ (EN 1745:2002 4.2.1 Table A12) 5/20

Additional Technical Data

- Maximum grain size, mm ~1.00
- E module, coefficient of elasticity, N/mm² ~3,000.00
- Bending strength, N/mm² ~1.90
- Mortar group, DIN V 18550 PII



CE	
SAS (Europe) Ltd Cheriton Bishop Exeter EX6 6JE SASPP2013-01 04	
EN 998-1 Coloured rendering mortar (CR), CS II for internal and external use	
Reaction to fire	A2
Adhesion	≥ 0.08 N/mm²
Fracture pattern	A, B or C
Water absorption	W2
Water vapour diffusion coeff	μ 5/20
Thermal conductivity, λ <sub>10, dry, mat</sub>	≤ 0.45 W/mK (P=50%) ≤ 0.49 W/mK (P=90%) EN 1745 Table A12
Durability:	Not determined
Dangerous substances	Not determined

CE	
SAS (Europe) Ltd Cheriton Bishop Exeter EX6 6JE SASPL2013-01 04	
EN 998-1 Coloured rendering mortar (CR), CS II for internal and external use	
Reaction to fire	A2
Adhesion	≥ 0.08 N/mm²
Fracture pattern	A, B or C
Water absorption	W2
Water vapour diffusion coeff	μ 5/20
Thermal conductivity, λ <sub>10, dry, mat</sub>	≤ 0.39 W/mK (P=50%) ≤ 0.43 W/mK (P=90%) EN 1745 Table A12
Durability	Not determined
Dangerous substances	Not determined

## ■ Lime Cement Primer

Solvent free, suction stabilising primer for full and even bonding of render and plaster.

- Ideal for strong or irregular suction substrates
  - Ideal for application in high temperatures
  - Suitable for internal and external use
  - Apply with block brush, roller or spray gun
- 
- Coverage: ~100m2 per can undiluted
  - Packaging: 10 ltr can
  - Shelf life: 2 years stored in cool and frost-free conditions
  - pH: 8 – 10
  - Drying time: 24 hrs

It is possible to dilute Lime Cement Primer in the ratios displayed below (Lime-cement primer : tap water) – refer to technical information datasheet for application details

Strong suction masonry / cellular concrete 1:2 – 1:4  
Normal suction masonry / sand-lime brick 1:4 – 1:6  
High temperatures 1:4

## ■ Deep Primer

Solvent free, deep penetrating stabilising primer for weak or powdery substrates.

- Ideal for renovations
  - Suitable for internal and external use
  - Apply with block brush
- 
- Coverage: ~0.4l/m2 or 25m2 per can
  - Packaging: 10 ltr can
  - Shelf life: 2 years stored in cool and frost-free conditions
  - pH: 7 – 9
  - Drying time: 24 hrs

## ■ SAS Good Application Guidelines

### Application reference

- For all ProRender renders BS EN 13914-1:2005 Design, preparation and application of external rendering and internal plastering; part 1, external rendering to be followed at all times.
- Other advice and guidance is available in BS 5262:1991 Code of practice for external renderings, predecessor to BS EN 13914, and BS 8000-10:1995 Workmanship on building sites; code of practice for plastering and rendering.

### General

- Surface preparation requirements for ProRender renders are the same as for ordinary sand and cement renders. Surfaces must be clean, suitably dry, sound and free from anything that may interfere with the adhesion of the materials to be applied.
- Only clean water fit for drinking should be used for gauging.
- Scaffolding must be independently tied to allow uninterrupted application.
- Masking should be used to give protection to adjacent work and to give clean straight edges. It should be removed immediately after finishing.
- Remove splashes of material from glass or aluminium immediately as they may etch the surface and leave a permanent mark.
- Walls should be protected from rain or other inclement weather during application and curing, ProRender renders should not be applied to substrates which are frost laden or have recently been exposed to prolonged rain.
- When applying in hot weather, it is advisable to ensure that work coincides with the shaded areas of the building.
- Local weather and site conditions must be taken into account by the applicator before any ProRender product is applied.

### Temperature

- ProRender renders should be applied between 5°C – 30°C. Materials should not be applied if temperatures are expected to drop below 5°C within 24 hours.

### Batching

- ProRender materials applied to a render elevation should either be of the same batch number or thoroughly mixed together to ensure colour consistency.

### Curing and Protection

- Care must be taken to protect cement products from rapid drying conditions such as exposure to direct sunlight or drying winds. In these conditions it should be kept evenly damp for 3 - 7 days by lightly spraying periodically with clean water. This is to ensure complete hydration of the cement.
- Polythene or Hessian sheeting is recommended during curing and should be arranged to hang clear of the face of the wall in such a way that it does not form a tunnel through which the wind could increase the evaporation of water from the rendering. Intermittent contact with the render must be avoided as this may cause a patchy appearance.

### Storage

- Cement based ProRender renders should be stored off the ground, under cover in dry conditions.
- ProRender Resin renders should be stored in dry cool conditions at a temperature greater than 5°C. Protect from sunlight and sources of direct heat. Containers should be kept sealed when not in use and stacked no more than four high.



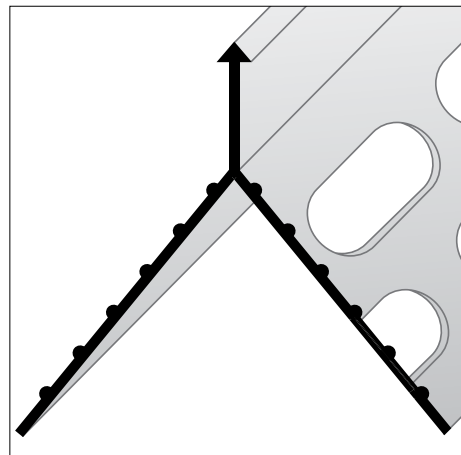
## Professional PVCu Render and Plaster Beading

- In excess of 25 profiles
- Wider range of colours than any other manufacturer
- External render and internal plaster beads
- REACH registered raw materials
- Over 1 million meters held in stock
- Next working day delivery to mainland UK

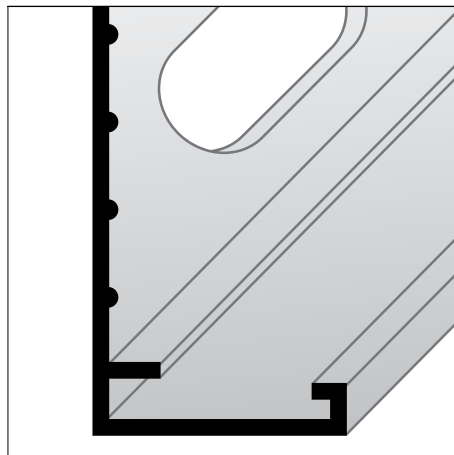


Standard colours:  
100% reground PVCu

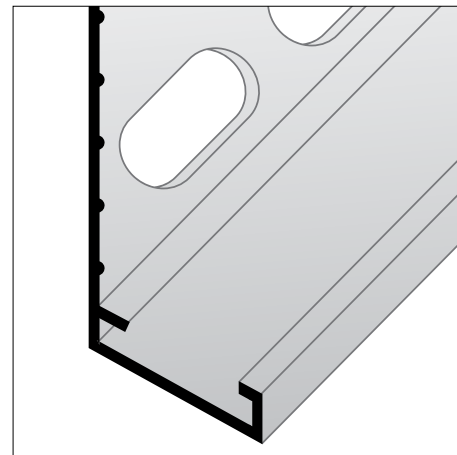
## Profiles



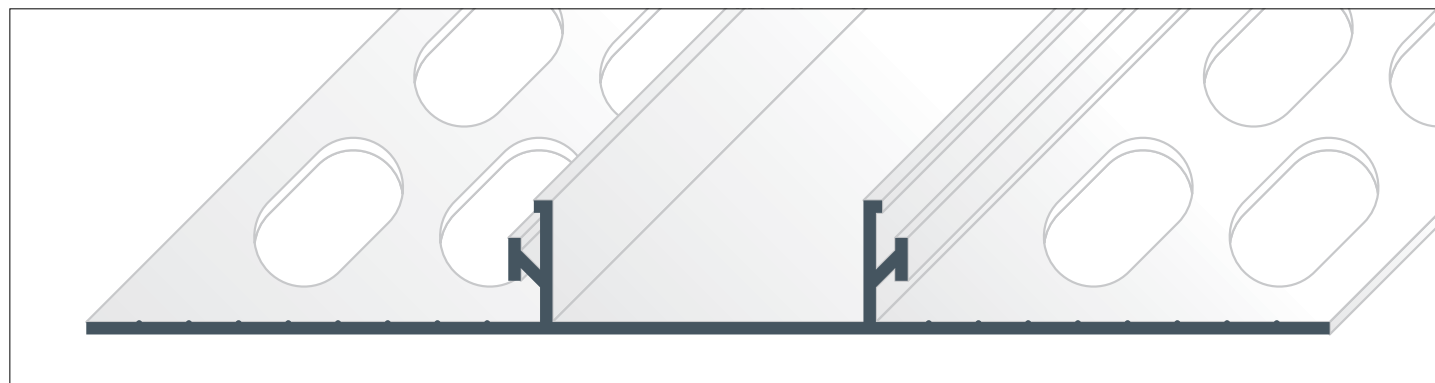
Angle



Stop



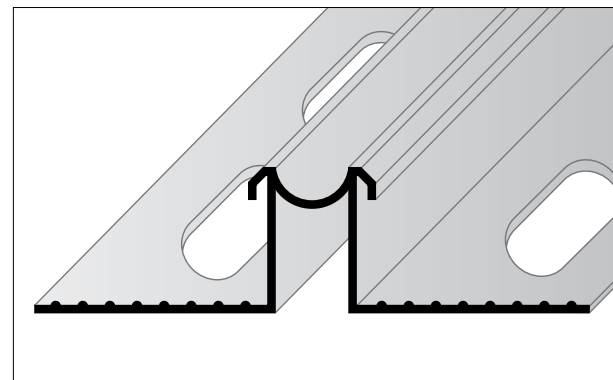
Bellcast



Ashlar Detail



Expansion



## Render and Plaster Reinforcing Mesh

- Reduced risk of cracking around apertures such as doorways and windows
- European manufacture
- Alkaline resistant glass-fibre strands
- Lightweight and tear-resistant offering incredible strength when embedded in wet render or plaster
- Internal and external grades available



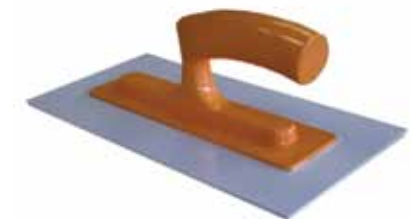
## Tools



ProRender Mineraltex  
Sponge Float



ProRender Colour  
Nail Float



ProRender Colourtex  
PVC Float



Ashlar Detail  
Cutting Tool



ProRender  
Finishing Spatula



ProRender  
EIFS Rasp





## ProRend Construction Training College

The ProRend Training College opened in January 2009 offering a truly away-from-site environment to learn about modern rendering systems. The market leading render training centre offers a combination of classroom theory and practical application of render products.

A wide range of courses are available (see opposite) to suit not only the needs of the practical applicator but also the needs to the sub-contractor management and CPD training in rendering techniques for architects and quantity surveyors.

## Facilities

### Classrooms

- Modern computer and projection equipped classroom
- Accommodates up to 12 trainees simultaneously
- Visibility into practical areas of the training centre
- Break-out and refreshment area
- Render finishes gallery

### Wet-room - Extensive Practice Walls

- Blockwork bays
- Lightweight block walls
- Boarded walls for render basecoats
- Decorative coating walls
- Wall with built-in aperture

### System Dry-room

- Steel frame stud wall with render carrier board
- Timber frame construction with door and window apertures

## Available Courses

### External Insulation Finishing System

- 09:00 - 16:00
- A spreads guide to adhesive insulation systems
- Adhesive system practical – 3 hrs
- Rail system overview
- Rail system insulation demonstration

### ProWall Advanced Lightweight Board and Render System

- 09:00 – 16:00
- ProWall on timber frame construction
- Installation demonstration
- Steel frame construction variations

### ProRend Premier Render Systems

- 09:00 – 16:00
- SAS practical application of renders
- ProRend practical including Colour, Colourtex, Mineraltex and Basecoats – 3 hrs

### ProRend Advanced

- 09:00 – 16:00
- Participants must have previously attended the ProRend course above
- Troubleshooting render issues before they occur
- Render detailing including rustification and modern design techniques

### Rendering Solutions For The Housebuilder

- 10:00 – 13:00
- Render system design
- Demonstration of render application techniques
- Understanding other trades
- Contrasting traditional sand and cement with monocouche





## ■ SAS

At SAS we have in excess of 35 years of practical experience in the rendering and plastering industry from personal application of materials to technical troubleshooting on site. We are always striving to improve our service and provide quality information as quickly as possible.

We are constantly developing and innovating new products for the market place to provide the best solutions for rendering and plastering. Our product portfolio contains premium quality products offering longevity to the proprietor as well as technically sound and fast applications to the contractor.

## ■ Nationwide Delivery

Ex stock packaged goods next working day  
Ex stock palletised goods 1-3 working days

## ■ Office Hours:

Monday-Thursday - 08:00-17:00  
Friday - 08:00-16:30

Information contained in this brochure was correct at the date of print. SAS (Europe) Ltd reserve the right to make alterations to the content of this brochure and to the products and services we make available as part of our continuing commitment to improvement.

## ■ PROREND

ProRend is part of the SAS (Europe) Ltd range of products and systems

**SAS** RAINSCREEN | INSULATION | RENDER | MESH | BEADS

SAS (EUROPE) LTD  
CHERITON BISHOP | EXETER | EX6 6JE | UK  
T: +44 (0)1647 24620 F: +44 (0)1647 24020  
E: [info@sas-europe.com](mailto:info@sas-europe.com)  
[www.sas-europe.com](http://www.sas-europe.com)

