

■ PROREND



COLOURTEX

SILICONE RESIN THIN COAT RENDER



PROREND

COLOURTEX | Silicone resin thin coat render

Victoria Dock, Caernarfon

This luxury residential and commercial development is shielded from its exposed location by ProRend Colourtex render.

The construction uses rendered rainscreen cladding and rendered solid wall insulation, both of which are seamlessly finished with Colourtex.

PROREND COLOURTEX

ProRend Colourtex is a premium, factory-batched proprietary silicone resin thin coat render.

This premium render provides a high-performing finish in a wide range of attractive colours, is suitable for application onto a wide range of substrates, and is available in two textured finishes: Colourtex Uniform or Grained.

Ideal Substrates

- Lightweight blockwork: 7kN or 3.5kN
- Existing render, unpainted
- New sand and cement
- Brickwork
- Pre-cast concrete
- Render carrier board
- Insulation that includes: expanded polystyrene, mineral fibre, and insulated concrete form (ICF)



Features

- Colourtex has a highly flexible, silicone resin finish that accommodates small movements in the substrate
- A wide range of colours with superior colour-fastness due to a coloured primer
- Easy to apply by hand or spray machine, then hand finish with ProRend Colourtex PVC float
- A highly water resistant finish from the silicone resin protects from driving rain
- Easily repaired
- A low maintenance synthetic resin finish that contains biocides – see below.

Maintenance

ProRend Colourtex is a high-performing, low maintenance render.

- Maintain ProRend Colourtex by pressure washing to clean away dirt or organic material.
- Overcoat ProRend Colourtex with paint to maintain the longevity of the render system. Painting is required periodically at least every 12 years, depending upon site conditions. Refer to the SAS maintenance datasheet for further details.



PROREND

COLOURTEX | Silicone resin thin coat render



Textures

ProRend Colourtex is available in two attractive textures shown below: 1.5mm Uniform or 3mm Grained.

Uniform, as the name suggests, has a tight, even finish similar to that of painted sand and cement.

UNIFORM



Colourtex Grained has a highly textured, rustic finish, with a dragged texture that can be finished either in random motions, or vertical strokes for a traditional alpine effect.

Please contact us directly for colour samples in either finish.

GRAINED



Colour Tinting And Matching

There are 18 colours in our standard range of ProRend Colourtex, see over page for swatches.

Additionally, we can tint Colourtex render to your choice of RAL, NCS or BS colours, or match to a coloured sample. We tint Colourtex at our site using the internationally recognised NCS colour system.

Please contact us for information on other available colour charts or for a sample colour of your choice.





PROREND

COLOURTEX | Silicone resin thin coat render



Simple Application

To apply Colourtex, first prepare the substrate in accordance with the technical specification.

This will typically include application of a ProRender basecoat and may require ProMesh render reinforcing mesh. Flat finish the basecoat as appropriate.

Next, apply ProRender Colourtex Primer across the entire area using brush or roller, a minimum of 24 hours before the final coat. The primer is the same colour as the final render coat to ensure excellent colour coverage. The primer contains quartz that provides a fine, sandpaper-like key for good adhesion of ProRender Colourtex. Always use the primer for colour consistency and optimum coverage of the final coat.

Apply Colourtex using a hawk and trowel keeping tight to the thickness of the grain: Uniform 1.5mm; Grained 3mm. It is important to pull the material out as much as possible to achieve the correct coverage. Always maintain a wet edge between scaffold lifts.

Finish ProRender Colourtex with a PVC finishing float, typically within 10-20 minutes of application, by agitating the grain to achieve the desired texture.

Contact our Technical team for a detailed specification of application for your project, or ask about render training courses at our centre.



■ Primer



■ Top Coat Application



■ Finishing

Note that the 'Simple Application' guidelines provided here will not be appropriate for every substrate. SAS (Europe) Ltd take no responsibility for application based upon guidelines provided within this brochure especially when a specification has not been provided.

PROREND

COLOURTEX | Silicone resin thin coat render

Technical Data

PROREND

Colourtex Primer

General Information

- Packaging, kg 16
- Buckets / pallet 44
- Water, l maximum dilution 5-10%
- Coverage, m²/bucket 35
- Shelf life, years ~2
- Surface drying 24 hrs

Technical Data EN 998-3: 2006

- L1 - Bulk density, kg/m³ ~1.60

Additional Technical Data

- Viscosity 29,000 - 31,000 m Pas
- pH ~7.9

PROREND

Colourtex Uniform / Grained

General Information

- Packaging, kg 17
- Buckets / pallet 44
- Water, l - maximum dilution 2%
- Coverage, m²/bucket
 - Uniform ~6 - 6.5
 - Grained ~4.5 - 5
- Shelf life, years ~2
- Surface drying 24 hrs
- Through dry 48-72 hrs

Technical Data EN 998-3: 2006

- L1 - Bulk density, kg/m³ ~1.70

Additional Technical Data

- Maximum grain size, mm ~3
- Viscosity 450 Pas
- pH ~8
- Water absorption coefficient W = 0.1 kg/m²



■ PROREND COLOURTEX

Silicone resin thin coat render

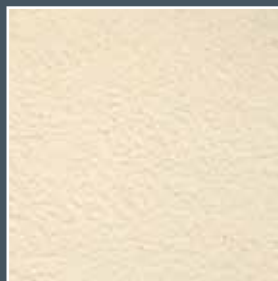
ProRend Colourtex is available in the following standard colours, or use our tinting service and choose from thousands of colours to match or complement your build.



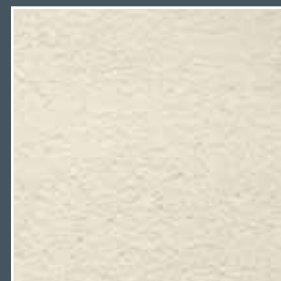
White



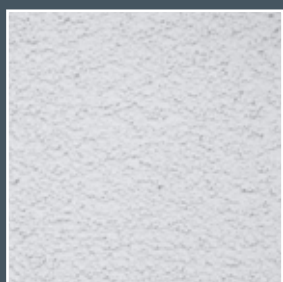
Ivory



Cream



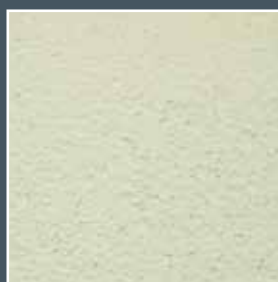
Mr Whippy



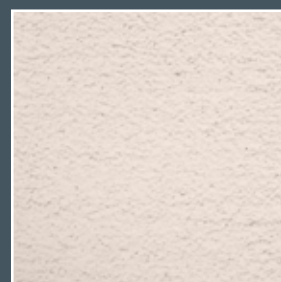
Dove



Wheat



Willow



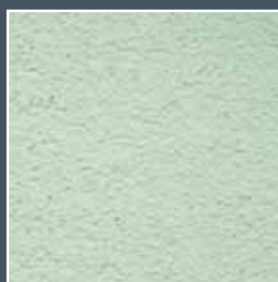
Peach



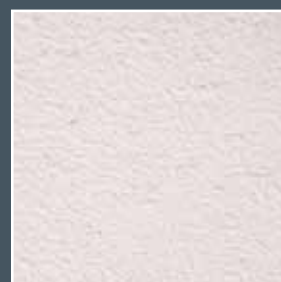
African Grey



Bamboo



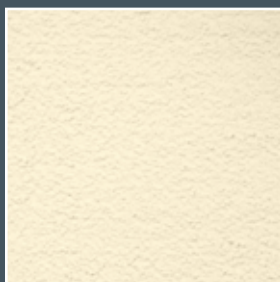
Sage



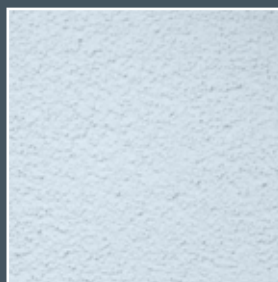
Candy



Fawn



Primrose



Ocean

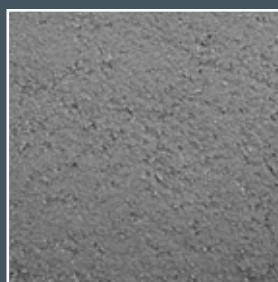


Cottage

The colours shown here are as close as we can print, so please ask for samples before making your final colour choice. Remember - we have matching coloured render beads available.



Your choice



Dolphin



Brick

Basecoat Selector

ProRend has three basecoats that are factory-batched renders supplied as dry mortars. Add clean water and mix to use.

SUBSTRATE	PROREND		
	Float	Prep	Lite
7kN dense concrete block	✓		
3.5kN dense concrete block	✓		
Lightweight block	✓	✓	
Existing render, unpainted		✓	
New sand & cement	✓	✓	
Render carrier board			✓
Brickwork	✓	✓	
Pre-cast concrete		✓	
ICF: Insulated concrete form			✓
Expanded polystyrene			✓
Mineral fibre insulation			✓

This selector is a guide only; please talk to one of our technical team about the specific substrate you have. They may also recommend additional products such as primers or render reinforcing mesh.

ProRend Float

ProRend Float is a high quality, factory manufactured dry mortar. Especially suited to masonry substrates such as blockwork with normal suction, Float can also be used as a great value and modern alternative to sand and cement.

Ideal substrates

- 7kN blockwork
- 3.5kN blockwork
- New sand and cement

Features

- Lightweight lime sand cement render
- Apply by hand or machine
- An ideal substitute for traditional sand and cement that avoids on-site mixing and measuring
- A suitable basecoat for all ProRend decorative renders or masonry paint
- Float can be smooth finished, sponge textured, or keyed to receive a subsequent coat.



■ ProRend Prep

ProRend Prep is a high quality, factory manufactured dry mortar, especially suited for levelling and renovation on mineral and synthetic backgrounds. Prep is well-suited to low or high suction backgrounds such as lightweight block or pre-cast concrete.

Ideal substrates

- Lightweight blockwork
- Existing render unpainted
- Brickwork
- Pre-cast concrete

Features

- Apply by hand or machine
- Ideal for substrates with variable or wide-ranging suction
- A suitable basecoat for all ProRend decorative renders or masonry paint
- Prep can be smooth finished, sponge textured, or keyed to receive a subsequent coat.



■ ProRend Lite

ProRend Lite is a high quality, lightweight polymer-modified dry mortar. It is ideal for use on insulation or render carrier boards as a basecoat for the ProRend Colourtex range of decorative finishes.

Ideal substrates

- Render carrier board
- Insulated concrete form (ICF)
- Expanded polystyrene (EPS)
- Mineral fibre insulation

Features

- Apply by hand or machine
- An ideal basecoat for ProRend Colourtex decorative render, or as a keycoat for other ProRend basecoats
- Lite can be smooth finished, sponge textured, or keyed to receive a subsequent coat.

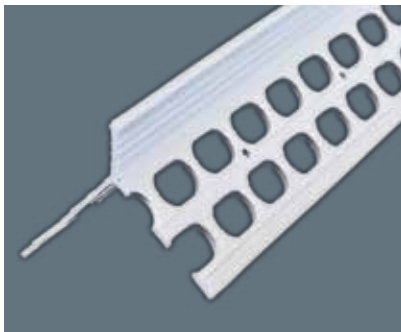


PROBEAD

PROFESSIONAL PVCu RENDER AND PLASTER BEADS

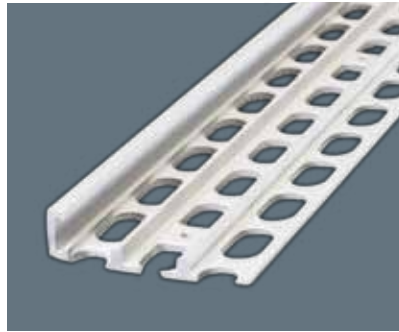
- High quality render bead
- A wide range of profiles
- Range of 18 standard colours
- Custom colours to order
- Through-coloured PVCu
- 25-year guarantee against failure

Popular Profiles



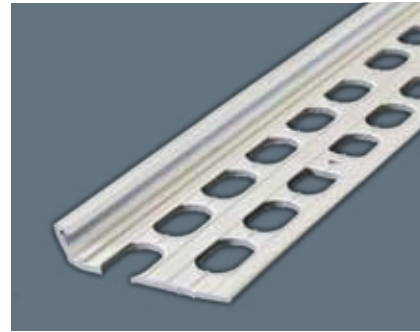
Angle

For a sharp corner. Available in Wide and Standard



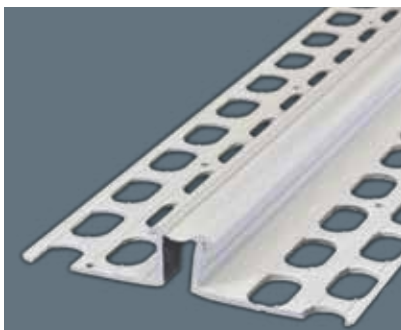
Stop

To finish and protect render edges



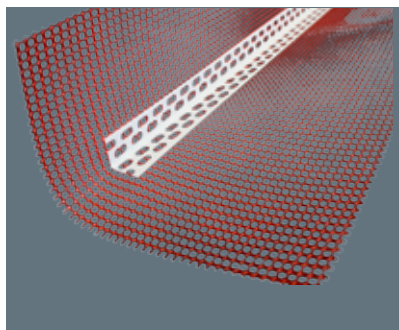
Bellcast

To form and protect the lower edge of the render



Expansion

Placed over joints and changes in substrate to reduce cracking



Plus beads

A range of specialist beads including meshed angles, window reveal and base bead.



PROMESH

RENDER AND PLASTER REINFORCING MESH

- **5 grades**
- **Durable and tear resistant**
- **10-year guarantee against failure**

- **Alkaline resistant**
- **Pressed weave**
- **Lightweight**

Why choose us?

SAS

- We supply complete UK render systems using the highest quality products - accredited by the BBA, the NHBC, and CE marked
- We have ISO 9001 and ISO 14001 Quality Management Systems across all of our manufacturing sites
- Our team offer unrivalled support, working directly with you from the initial design to the finished product
- Take advantage of our consultation services

 **PROREND**
 **PROMESH**
 **PROBEAD**

Choose a winning combination for a great finish

- from design to application
- SAS provide technical resources at all stages of development; including library and bespoke CAD drawings; thermal calculations; colour matching and onsite support
- We can recommend contractors who are trained to our high standards
- We provide training on the application of our render systems and products at our ProRend training centre

ProRend Training Centre

- Practical and classroom learning
- Day courses held at our centre in Devon
- Use products on our practice walls
- Learn render system design and application
- Case studies and demonstrations
- Earn certification
- Join our Applicator Network
- Call us to book for you and your team



■ SAS

At SAS we have more than 35 years of practical experience in the rendering and facades industry. Our team have practical experience of applying products, we work with specifiers and provide technical problem-solving on site. SAS supply the highest quality external products for your build projects, and have an experienced technical team to get the results you want.

We are constantly innovating to provide the best solutions for rendering and plastering. Our premium quality products offer longevity to the proprietor as well as technically sound and fast applications to the contractor.

■ Nationwide Delivery

Stock items : 1-2 working days

Non stock items: Up to 10 working days

■ Office Hours

Monday-Thursday - 08:00-17:00

Friday - 08:00-16:30

Call the office on 01647 24620

Information contained in this brochure is correct at the time of print. SAS (Europe) Ltd reserve the right to make alterations to the content of this brochure and to the products and services we make available as part of our continuing commitment to improvement.

■ PROREND Colourtex

ProRender Colourtex is part of the SAS (Europe) Ltd range of products and systems

SAS RAINSCREEN | INSULATION | RENDER | MESH | BEADS

SAS (EUROPE) LTD

CHERITON BISHOP | EXETER | EX6 6JE | UK

T: +44 (0)1647 24620 F: +44 (0)1647 24020

E: info@sas-europe.com

www.sas-europe.com

