



# Tactite

A high performance solution for demanding interiors, Tactite creates a tough, durable and hygienic wall coating. The finish is exceptionally hardwearing and easy to clean, making it highly suitable for commercial interiors such as hospitals, schools, offices and high traffic public areas where cleanliness is essential. Also ideal for domestic use, Tactite features a ‘soft touch’ feel to create a warm, inviting interior with a suede or textured finish.



## Product Data

Product description	A water-based decorative wall coating creating a tough, durable and hygienic finish. Features a ‘soft touch’ feel with a suede finish.
Colour palette	18 colours
Test Data	
SCRUB RESISTANCE (ASTM D2486)	1,150 cycles
ISO 2812	Class 2 - washable
STAIN RESISTANCE (ASTM D1308)	Coffee 4, red wine 4, vinegar 5, tomato sauce 5, mustard 3, strawberry preserve 5 (1 = poor 5 = excellent)
ANTI-MICROBIAL PRESERVATION	
Mould resistance (ASTM D3273)	10/10/10
Mildew resistance (ASTM 3274)	10/10/10 ( 1 = poor 10 = no growth)
ANTI-FUNGAL ACTIVITY	No visible growth
Anti-algal activity	No visible growth
Anti-bacterial (JIS Z2801)	E.Coli, MRSA, Salmonella, no bacteria survived
FIRE TEST	
ASTM E84	Class A
VOC content	
ASTM D3960 (USA EPA <250g/litre)	67 g/l
BS ISO EN 11890-2	EU limit for this product (cat A/I): 200 g/l (2010). This product contains max 10g/l VOC
Coverage rates	8-10m <sup>2</sup> /litre (two coat application)
Manufacturer	Manufactured in the UK by Armourcoat Ltd
Health and Safety	Non-toxic. Refer to material safety data sheet for further information
Suitable substrates	Can be applied to our recommended substrates which should be clean, dry, firm, true, will not crack and are correctly prepared. The best substrates to work on are taped and jointed plaster-board and freshly plastered walls that are fully dry. Tactite can be applied to existing painted surfaces, provided that the paint is well adhered to the wall.
Storage	Store in good dry condition between 5-25°C. Protect from frost, sunlight and sources of direct heat. Keep container sealed when not in use. Shelf life in an unopened container under correct storage conditions is 12 months from date of manufacture.





TT 10144



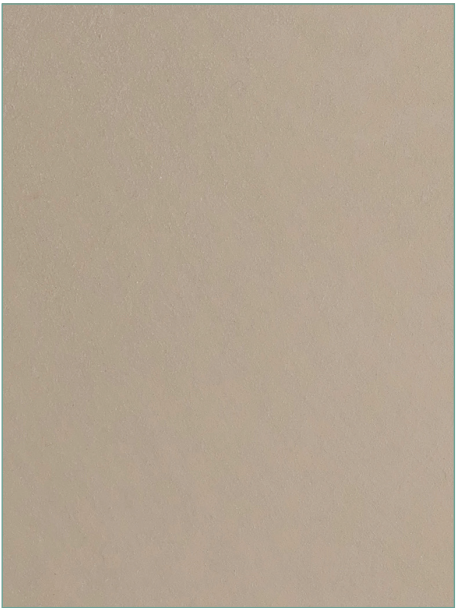
TT 10145



TT 10146



TT 10147



TT 10148



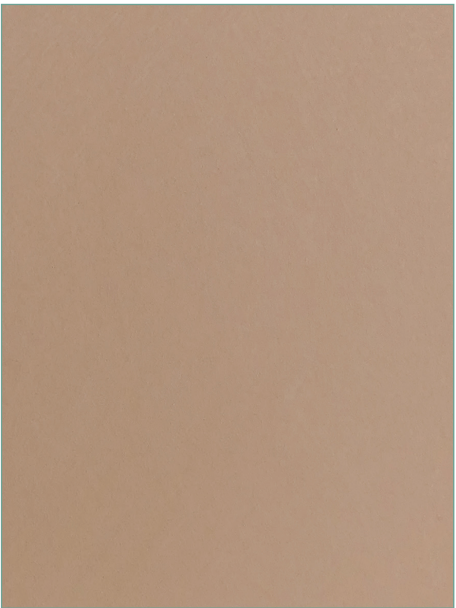
TT 10149



TT 10150



TT 10151



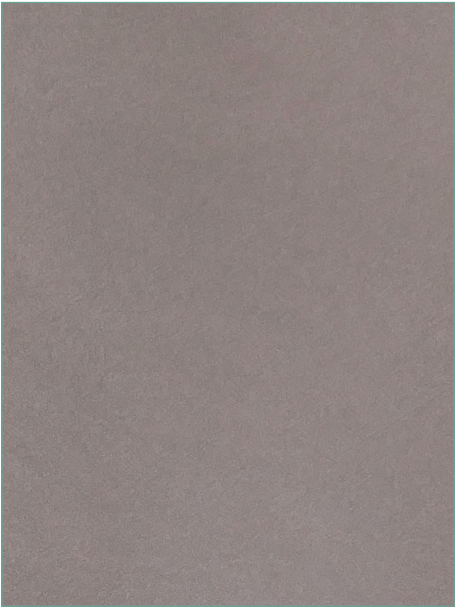
TT 10152



TT 10154



TT 10155



TT 10156



TT 10157



TT 10158



TT 10159



TT 10160



TT 10161



TT 10162