

# PP | X

POLISHED PLASTER EXTERNAL




PP | X



Front cover and this image used for illustrative purposes only.





## Stunning exteriors. Stunning performance.

Armourcoat PPX (Polished Plaster eXternal) is a low maintenance, durable exterior limestone render system that allows you to create stunning honed and textured stone-like finishes for both new build and renovation projects.

Based on our market-leading polished plaster finishes, PPX incorporates hydrophobic polymers and reactive pozzolans to form a decorative, weather resistant and vapour permeable layer that adheres to most building materials, including brickwork, blockwork, masonry and stone.

PPX can also form part of an ETAG 004 compliant External Wall Insulation (EWI) system, delivering outstanding thermal properties and improved fire resistance.

A global brand operating in over 80 countries, Armourcoat are committed to technical excellence. With an outstanding product range, featuring recycled material and low VOCs, Armourcoat remains at the forefront of sustainable decorative surface solutions. Our finishes are specified by leading architects and designers across all sectors; including luxury hotels and resorts, boutique retail, large-scale commercial and high-end residential clients in an extensive project list.

PP | X





"Armourcoat PPX looks great and we are really thrilled with the results. It is maintaining itself beautifully against all kinds of weather"

Liz Reece  
General Manager,  
Café Football

## Case Study: Café Football

Armourcoat PPX has been used to striking effect at Café Football, a restaurant in Westfield Stratford City in East London.

Armourcoat PPX covers the full width of the restaurant's façade and incorporates elements of Café Football's colourful branding. Cafe Football offers the opportunity to dine in a warm and welcoming atmosphere, with a strong football theme running throughout the interior.

Owner GG Hospitality, led by former Manchester United teammates Ryan Giggs and Gary Neville, wanted a deconstructed urban look but was struggling to source a suitable finish.


PPX met the brief exactly. We worked closely with designer Checkland Kindleysides and GG Hospitality to create the desired 'natural' concrete effect by using additional layering techniques. PPX was also used for the large planters that mark out the alfresco dining space.



PP | X







## Case Study: Mayfield, East Sussex

Armourcoat PPX has helped transform a tired 1960's house into a modern family home in the heart of the Sussex countryside.

The McKeogh family's vision to renovate the outdated property in Mayfield included converting the roof space to create additional bedrooms and extending the ground floor to increase the living area.

A particular challenge was updating the exterior in a way that was sympathetic to both the 1960's building and its rural surroundings. The finish had to adhere to both the original brick and block walls and the new blockwork, while delivering a consistent result.

As Chief Executive of New London Architecture, Nick McKeogh had seen Armourcoat finishes on the Darwin Cocoon in the Natural History Museum. He was impressed by the clean, natural appearance and decided this would be the perfect solution for his new home.

We worked with Emrys Architects to develop the PPX finish the McKeoghs wanted: an 'off-white' stucco render that achieves the desired effect without looking artificial; a highly durable finish that will ensure the building looks as good as it does today, for many years to come.

"Armourcoat PPX has transformed the house's outdated exterior to give a beautiful, contemporary feel with an elegant, natural finish"

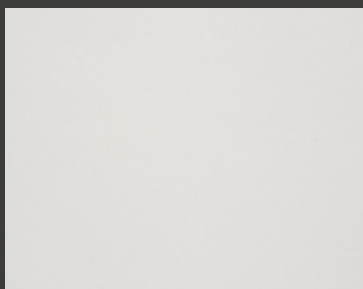
Nick McKeogh  
Homeowner and Chief Executive,  
New London Architecture



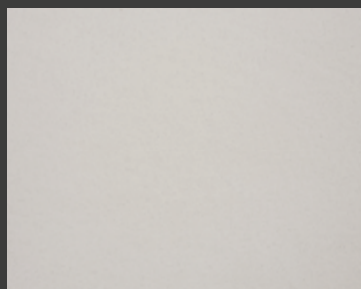


## Smooth and textured decorative finishes

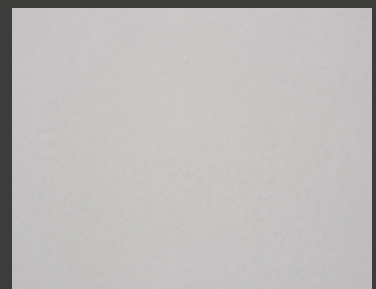
Available in a range of natural stone colours, the PPX Topcoat incorporates 50% recycled marble and can be applied in numerous stunning and creative finishes, including honed or pitted limestone and custom patterns.



WHITE - 8367



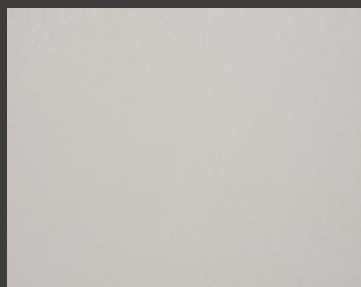
OFF WHITE - 9157



GREY - 9161



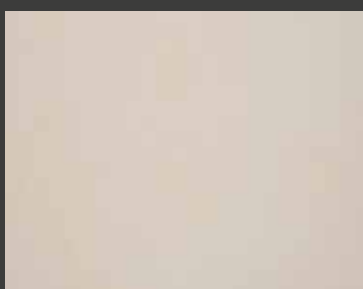
CONCRETE GREY - 9156



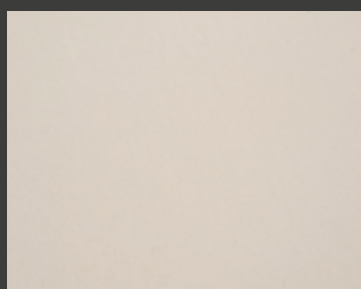
LEATHER GREY - 9162



TAUPE - 9152



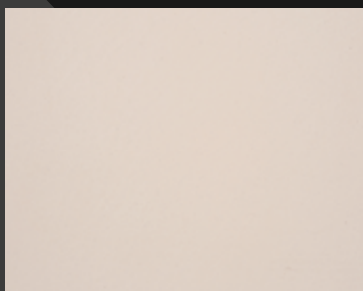
PORTLAND - 9153



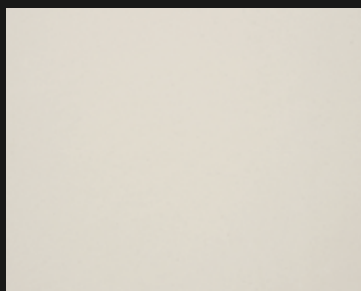
LIMESTONE - 9154

Colours and patterns illustrated are for guidance only. Due to print limitations, the exact pattern, colours and shades may vary from those shown. Please request a sample for accurate colour representation.

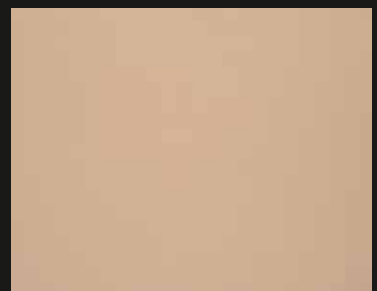




SUEDE - 9155



CREAM - 9160



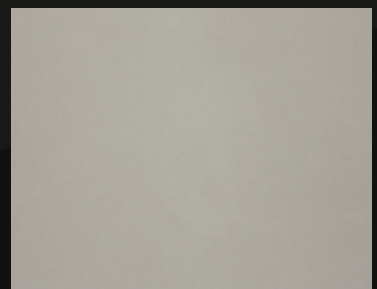
STRAW YELLOW - 9649



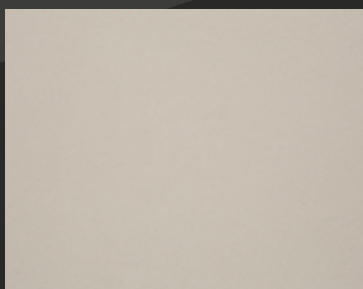
SIENNA YELLOW - 9650



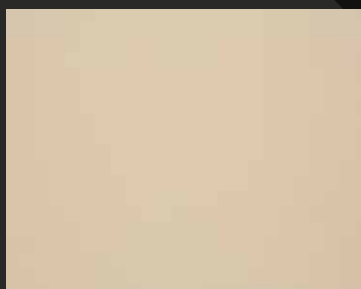
COOL GREY - 9651



CEMENT GREY - 9652



MUSHROOM - 9653



BATHSTONE - 9654

With any wet formed, hand-applied material there will always be some surface irregularities. Aesthetic acceptability is subjective, British Standard EN 13914-1:2005 defines the limits of acceptability and the viewing conditions under which an assessment should be made.



## Armourcoat PPX External Wall Insulation System

The Armourcoat PPX External Wall Insulation (EWI) system ensures both new build and refurbishment projects meet stringent thermal performance standards and provides buildings with a durable, weather resistant exterior in a wide range of finishes.

### Improving and protecting refurbished buildings

The PPX EWI system can play a key role in any refurbishment project, providing a stunning new exterior whilst delivering immediate energy and cost savings by upgrading thermal performance. Suitable for both solid and cavity walls, PPX EWI reduces thermal bridging; provides long term protection from condensation, mould and damp; and also improves a building's fire safety rating.



### Innovative and energy-efficient façades for new buildings

Not only does the PPX EWI system help meet – and often exceed – building regulations for thermal performance (up to Passivhaus standards), it also offers a way of creating original and innovative façades for modern buildings. It can complement or contrast with other materials; deliver natural finishes in a wide range of colours; and can incorporate details such as branding, logos and stencil designs.



### Tested to the highest standards

The PPX EWI system has been tested in accordance with ETAG 004 2013 Guideline for Technical Approval of External Thermal Insulation Composite Systems with Rendering.

Test	ETAG 004 2013 Clause	Requirement	Pass/Fail
Bond strength control	6.1.4.1.1	$\geq 0.08\text{N/mm}^2$ or cohesive failure of insulation	Pass
Hygrothermal performance	6.1.3.2.1	No cracking, blistering, peeling or delamination or wetting of insulation	Pass
Bond strength: Wall	6.1.4.1.1	$\geq 0.08\text{N/mm}^2$ or cohesive failure of insulation	Pass
Impact resistance: Wall	6.1.3.3	Category I, II or III	Category II



### Wall Substrate

Armourcoat PPX is suitable for a variety of substrates, including brick, block, masonry and cement board.

### Lambdatherm 70 EPS

This fire-retardant (Euroclass E) expanded polystyrene (EPS) board is made from BASF Neopor®, incorporating graphite to reflect and absorb radiant heat, delivering up to 20% better thermal insulation compared with standard EPS. Lambdatherm can be attached to walls using either PPX Basecoat, CN8 fixings or a combination of both. The PPX render system has been classified as Class B under ETAG 004 2013.

### PPX Basecoat

A limestone cement render using hydrophobic polymer technology for enhanced performance. PPX Basecoat is typically applied in a single 4-6mm coat, with a layer of embedded reinforcing mesh.

### Sealer 56

A fluoroacrylic wax that limits both water and oil penetration and staining.

### CN8 Fixings

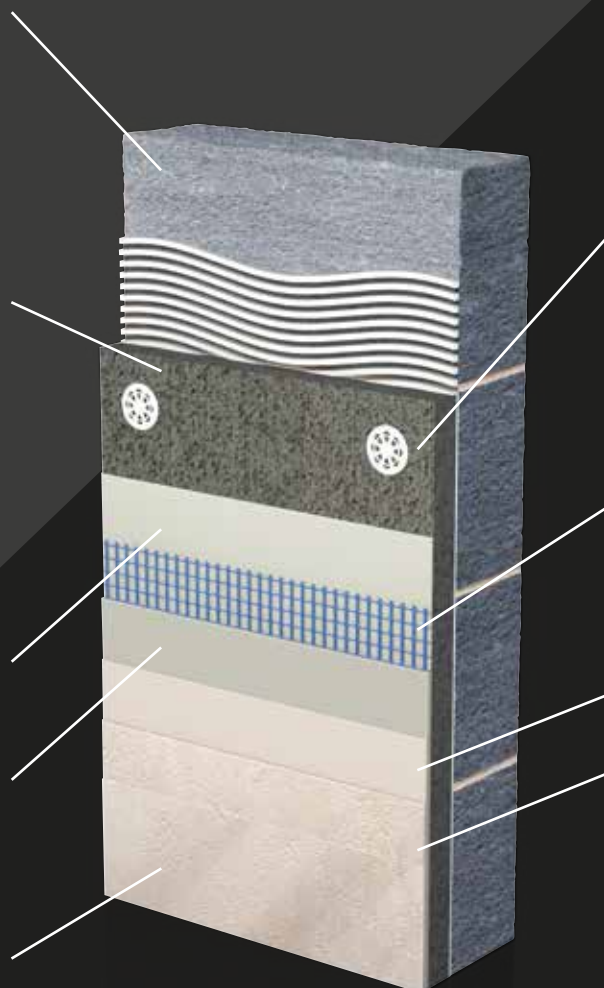
CN8 hammer-set fixings are approved to ETA-09/0394 for attaching EPS board to concrete and masonry walls. They use a compound nail to avoid thermal bridging and are available in different lengths to accommodate a range of EPS boards.

### Glass Fibre Mesh

Woven from alkali-resistant coated glass fibres, this cloth provides reinforcement and reduces cracks, as well as improving adhesion. It is accredited to ETAG 004 and can be used with PPX Basecoat, Keycoat or Anticrack Skim.

### PPX Topcoat

A natural material composed of crushed marble, cement, lime and hydrophobic additives, Armourcoat PPX Topcoat can be used to create a variety of finishes, including honed and pitted limestone and travertine-like patterns. The final topcoat is applied in two layers using a total of 1.8-2kg/m² and can be used as part of the PPX EWI system or on PPX Basecoat applied directly to a wall.



### Durable weatherproof coating

Hydrophobic polymers create a highly durable, weather resistant and vapour-permeable layer to protect your building and ensure it remains stunning for many years after installation. PPX's glass-fibre woven mesh provides additional strength and reduces cracking.



### Excellent thermal insulation

The PPX EWI system uses Lambdatherm expanded polystyrene board incorporating graphite to deliver 20% more thermal insulation than standard EWI systems. Boards are attached using mechanical fixings, preventing thermal bridging and improving insulation even further.



POLISHED PLASTER EXTERNAL

Armourcoat Limited  
Morewood Close  
Sevenoaks  
Kent  
TN13 2HU

T: +44 (0)1732 460668  
F: +44 (0)1732 450930

[www.armourcoat.com](http://www.armourcoat.com)