



**Document: 149252.24**  
 Collection: 106: Product Data Sheets (PDS)  
 Modified: 27/02/2020 15:45  
 Created: 14/02/2020 12:05

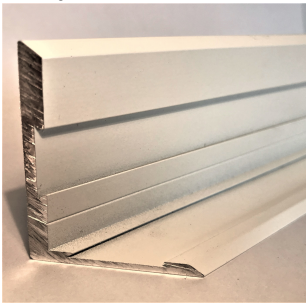
**Armourcoat Ltd**  
 Morewood Close Sevenoaks Kent TN13 2HU  
 T: +44(0)1732 460 668 F: +44(0)1732 450 930  
 UK Company 1997888. VAT Reg: 445788013  
[www.armourcoat.com](http://www.armourcoat.com)

# Product Data Sheet PDS058: Acoustic L Channels and Beads

## Aluminium L Channels

### 1 Product Description

The System L channel is made from extruded aluminium and has been powder coated to RAL 9003 Signal White .



### 2 Dimensions

The aluminium L channel is 28mm x 48mm in size. It can therefore be used for both the 28mm and 48mm Systems depending upon how it is installed.

It is supplied in 3m lengths which can be cut and mitred as required on site (Armourcoat recommends the use of a good quality cross cut/mitre saw such as the Evolution R210).



### 3 Usage

These L section channels are ideal where the System must be finished with an exposed edge or to create a shadow gap against a wall or other surface.

These rigid aluminium profiles will give a good straight line or edge.

Armourcoat also provides small aluminium inserts for joining two lengths together whilst maintaining good alignment.

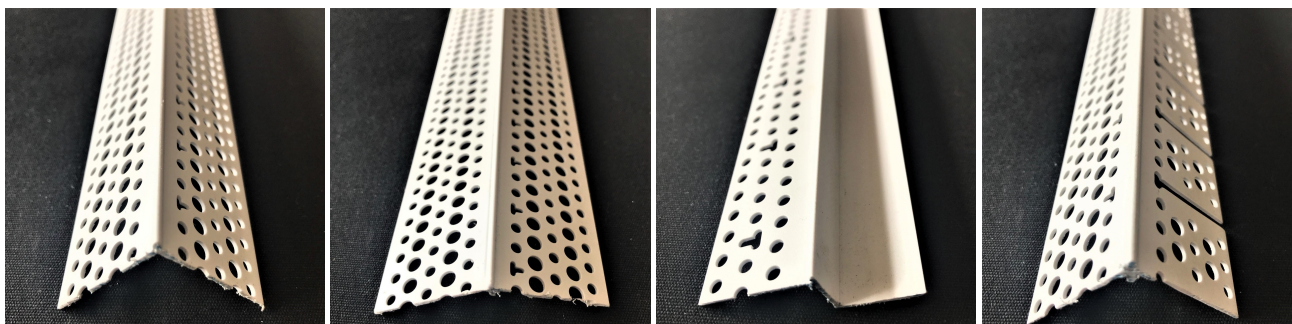


# Beads

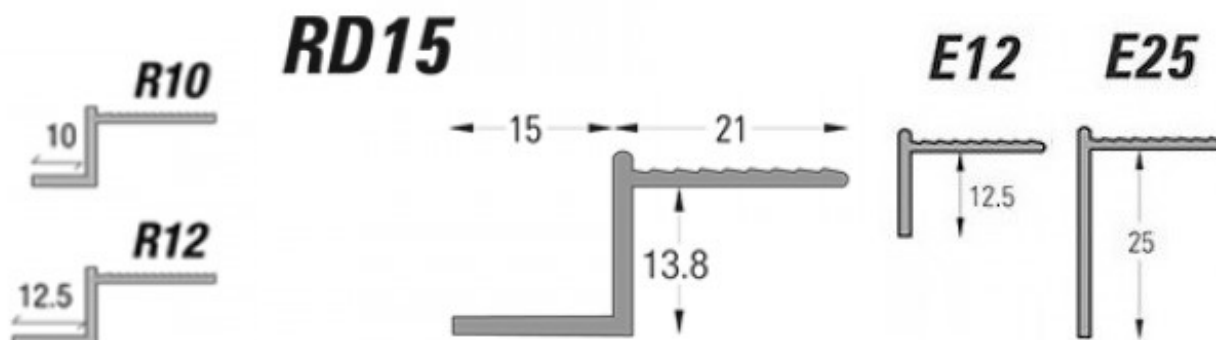
## 1 Product Description

Armourcoat offers a range of plastic beads that are well suited for the System. These are:-

- Armourcoat Acoustic Corner Bead
- Armourcoat Acoustic Splay Angle Bead
- Armourcoat Acoustic Z Profile Shadow Gap Bead
- Armourcoat Acoustic Arch Corner Bead for Curves



In addition to the plastic beads, Armourcoat recommends aluminium beads manufactured by QIC ([www.qic-trims.com](http://www.qic-trims.com)). The QIC trims Armourcoat recommends are the R10, R12, RD15, E12 and E25.



Armourcoat can supply these beads to order.

The main advantage of the aluminium trims is that they are less flexible and are therefore ideal for creating long edge runs that are perfectly straight.

The main disadvantage of aluminium beads is that they are heavier. When installing them with adhesive it is usually necessary to put in some temporary screws to hold it in place whilst the spray glue is going hard.

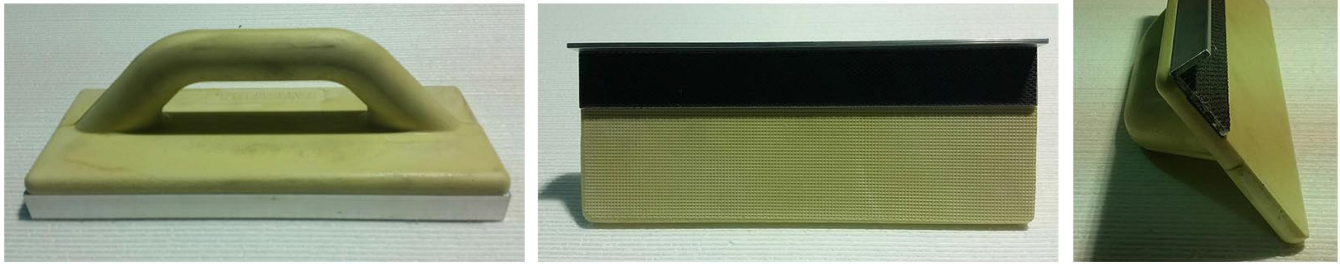
## 2 Dimensions

Armourcoat plastic beads are supplied in 3.05m lengths.

## 3 Usage

When installing the beads it is necessary to create a 2mm recess in the board coating to accommodate the thickness of the bead flange.

Armourcoat has created a special tool to do this - the Edge Trim Sanding Float – 11”.



This is available from Armourcoat.

The beads are fixed into place using a spray applied contact adhesive such as 3M Super 77 or 3M Hi Strength 90 Spray adhesive.

---

Whilst every attempt has been made to ensure the accuracy and reliability of the information contained in this document, the information should not be relied upon as a substitute for formal advice. Armourcoat Ltd, its employees and agents will not be liable for any loss or damage, of any kind, arising out of or in connection with the use of this document. Please refer to the company disclaimer for further details.