



Manufacturers and Suppliers of:



Quality Without Compromise

SHORT FORM BROCHURE

WCs and Urinals



Urinals

Sizes up to 3600mm
"L" shapes
Wall hung
Floor standing
Floor recessed
Pod (bowl)

WC Pans

Heavy duty anti-vandal
Back-to-wall
Close coupled
Wall hung



Bariatric WC Pan

Heavy duty
Manufactured from 2mm thick stainless steel
Tested to 1000KG weight limit
Supplied as standard in white EnviroGlaze finish
Available with Big John seat and cover
(as pictured) tested to 500KG

Asian Style Squatting Pan

Complete with back inlet flushing terminal
Options include:
Concealed cistern, P and S traps, shattaf bidet spray



To view our full product range please visit our website: www.acornpowell.co.uk.

Wash Equipment

Wash Troughs

Lengths up to 3600mm
Compact models available
Taplanding
Splashback
Wall mounted
Optional front legs
Full range of taps and sensor spouts available



REZINA Solid Surface Wash Troughs

Lengths up to 3000mm
Wall mounted
Vanity sit on
Taplanding or splashback design
Nursery (compact) models available
8 standard colours available



Inset Wash Basins

Various shapes available
Dental HBN00-10 inset bowls available
Various sizes available



Wall Mounted Wash Basins

Various sizes available
Security basins
Wall recessed hand rinse
Corner basins



Circular Wash Fountains

Floor standing
6 and 8 user models
Hand, foot or sensor operated
Integral soap dispensing system
4 user semi circular also available

**Wall Mounted
Bucket Sink**
Other models
available



Sensor Operated Spouts

Available in kits of 1, 2 or 3
Battery or mains powered
Taplanding or splashback models available



To view our full product range please visit our website: www.acornpowell.co.uk.

Drinking Fountains Bottle Fillers Water Coolers

Wall Mounted Drinking Fountains

Smooth radiused design
Complete with bubbler valve and waste
Units with full height undershrouds available
Pedestal model available



Wall Mounted Bottle Fillers

Smooth radiused design
Complete with bottle filling valve and waste
Units with full height undershrouds available



Remote Water Chiller

Can be retro-fitted to drinking fountains or bottle fillers to provide chilled water
Can be installed up to 7 feet from the water outlet



Combination Drinking Fountain and Bottle Filling Station

Adult or junior height
Suitable for indoor and outdoor use
Vandal resistant



Recessed Water Cooler

Bottle filler or bubbler valve operation
Vandal resistant
Sensor operation available as an option
Also available as an unchilled unit

Wall Mounted DDA Water Cooler

Stainless steel or granite powder coated finish
Available with additional bottle filler
Cools 30.3 litres an hour to 10 degrees celcius



To view our full product range please visit our website: www.acornpowell.co.uk.

Hospital Products



Hospital Disposal Units

Sluice unit with sink and drainer
Available in other configurations
Top or rear entry
HBN00-10 (formerly HTM64) compliant

Hospital Pattern Sink

Available as a single or double bowl unit
Supplied complete with flush grated waste and no overfl
HBN00-10 (formerly HTM64) compliant



Hospital Pattern Scrub Up Trough

Available in 3 standard lengths
High or low back options
Deep or shallow back options
HBN00-10 (formerly HTM64) compliant

Janitorial Unit

Stainless steel combined bucket sink and hand wash basin
Supplied complete with lever tap with copper tail
HBN00-10 (formerly HTM64) compliant
Non hospital version also available



Hospital Plaster Sink

Wall mounted
Plain stainless steel top with anti drip edge
Intergrated sump with lift out basket and cover
HBN00-10 (formerly HTM64) compliant

To view our full product range please visit our website: www.acornpowell.co.uk.

Washroom Accessories

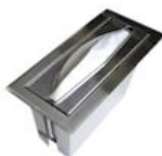
NEW FOR 2016



Paper Towel Dispenser
7001



Paper Towel Dispenser
7002



Countertop Dispenser
7003



Centre Feed Dispenser
7005



Jumbo Toilet Roll Holder
7010



2-Roll Toilet Dispenser
7011



Single Toilet Roll Holder
7012



Twin Toilet Roll Holder
7013



Toilet Tissue Dispenser
7014



Soap Dispenser
7020



Soap Dispenser
7021



Deck Soap Dispenser
7022



Deck Soap Dispenser
7023



Deck Soap Dispenser
7024



Auto Soap Dispenser
7025



Combi Towel & Waste
7030



Combi Towel & Waste
7031



Sanitary Towel Waste
7040



Sanitary Towel Waste
7041



Waste Bin 26.5L
7042



Waste Bin 7.6L
7043



Countertop Waste Door
7044



Countertop Waste Chute
7045



Fold Down Shelf
7050



Mirrors
751 - 754



Baby Change Unit
9012

To view our full product range please visit our website: www.acornpowell.co.uk.



Wall Mounted Eye / Face Wash

Plastic bowl
ABS plastic eye / face wash spray heads
Inline strainer
Stay-open 1/2" ball valve with push handle



Wall Mounted Eye / Face Wash

Stainless steel bowl
Clam shell cover that opens automatically when the hand bar is pushed
ABS plastic eye / face wash spray heads
Inline strainer
Stay-open 1/2" ball valve with push handle



Drench Shower

Vertically (ceiling) mounted drench shower
Plastic shower head
Optional stainless steel shower head
Horizontal (wall) and column (floor) mounted drench showers available



Combination Eye Wash and Drench Shower

Pedestal mounted
Features eye / face wash
ABS plastic eye / face spray heads
Inline strainer
Stay open 1/2" ball valve with push handle/pull rod
Available in plastic, partially stainless steel or fully stainless steel models



To view our full product range please visit our website: www.acornpowell.co.uk.