



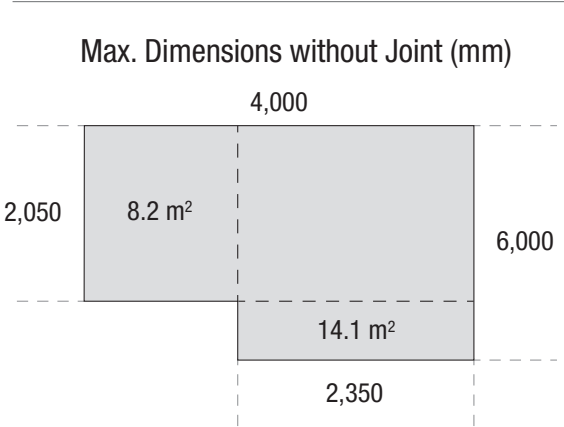


Screen Satiné Low-E is a robust glass fibre fabric with a metal coating on both sides. This double reflective coating results in the lowest g-value than can be achieved with an internal shading product. While keeping out the heat in summer, the fabric also reduces heat loss through the windows in winter. Its high stability and fire retardancy make this fabric very suitable for project applications.

- Openness Factor 3% 
- Semi-Transparent 
- 42% Glass + 58% PVC 
- FR Rating B1 - M1 

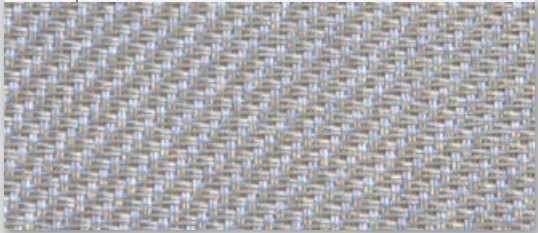




3%

5972

Silver





## Material Properties

	Openness Factor 3%
	Transparency Semi-Transparent
	Material Composition 42% Glass + 58% PVC
	Weight 520 g/m <sup>2</sup>
	Thickness 0.65 mm
	Fabric Width 2,400 mm
	Colour Fastness 7 - 8 • ISO 105 B02
	Cleaning Brush

## Fenestration Properties

		Light Values					Energy Values				
		EN410 / EN14501					EN410	EN 13363-2			
LPN Code	Fabric Side										
		Rv %	Tv <sub>diff</sub> %	Tv <sub>dir</sub> %	Glc	Tuv %	Rs %	Ts %	gB %	gC %	gD %
5972	F	74	1	3	3	4	76	4	25	26	13

## Max. Sizes Roller Blinds

	Direction A without joint (8.2 m <sup>2</sup> ) 4,000 mm (W) x 2,050 mm (H)
	Direction B without joint (14.1 m <sup>2</sup> ) 2,350 mm (W) x 6,000 mm (H)

## Fire Resistance Rating

	DIN 4102 B1 NF P-92503 M1
--	------------------------------

## Environment (for interior use)

	Low VOC
--	---------



# HunterDouglas

WINDOW COVERINGS