



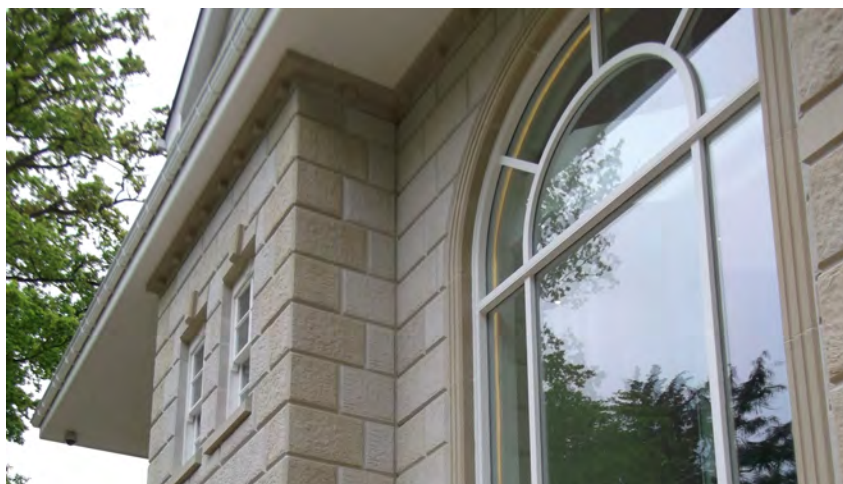
PROJECT CASE STUDY



This substantial new residential property has cast stone as the main external building material.



No question that the end result is both imposing and unique.



Close-up showing the excellent detailing of just some of the cast stone units.

Substantial New Residential Property with Cast Stone Used Entirely as The Main External Building Material

Client

Baron Developments

Location of Project

London

Project Overview

A slightly unusual new build property in that all of the main external building material is cast stone, with specific elements being walling, balustrade, heads, cills, string courses, eaves course, chimney caps & copings.

Project Notes

This was a very significant project for us, and both for the complexity of the design of the building and the sheer quantity of cast stone units. We consider the finished result to be imposing and unique.

Client Feedback

"This was a very large project with a lot of cast stone units. The units were labelled and we had a corresponding drawing to show the unit locations. All of the staff at Procter were very helpful and we are very happy with quality of the product."

RES-16

Procter Cast Stone
Isabella Road, Garforth
Leeds, LS25 2DY
Tel: 0113 286 3329
Fax: 0113 287 6284
websales@procter garforth.co.uk



www.caststoneuk.co.uk