



PROJECT CASE STUDY



New Premier Inn hotel in central London showing extensive use of cast stone

Cast stone cills and band courses for new Premier Inn hotel

Client

Bennett Construction

Location of project

Central London

Project overview

This was a large project with a total of 52 tonnes of cills and band course product manufactured to architects' drawings and delivered to site in carefully planned phases.

Project notes

Manufacturing was straightforward, with the more challenging aspect of the project being the limited space on site and therefore the need for multiple deliveries at specific times.

Client feedback

"We were very pleased with the professional way in which the order was processed, from the shop drawing production and approval, to the quality of the final product which was delivered to our programme. I would highly recommend Procter for dry cast stone." Gerard O Connor, Bennett Construction.



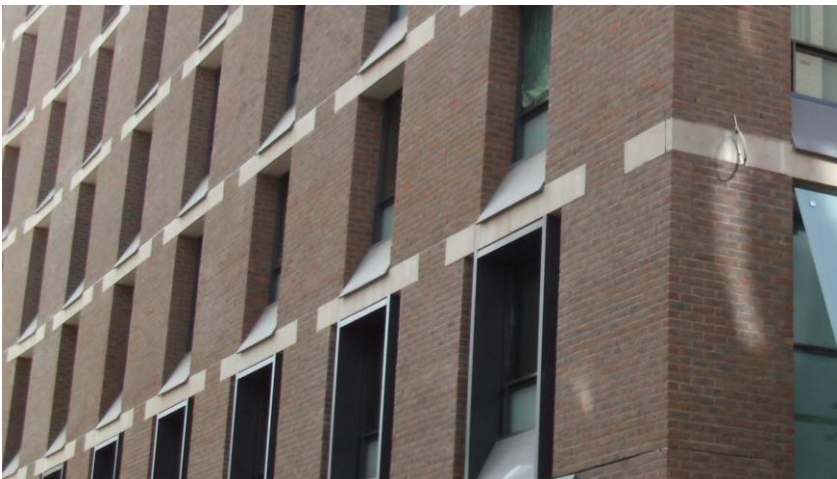
Procter Cast Stone
& Concrete Products
Isabella Road, Garforth
Leeds, LS25 2DY
Tel: 0113 287 6282
Fax: 0113 287 6284
sales@procterbewas.co.uk

COM-01

www.caststoneuk.co.uk
www.concrete-posts.co.uk



A great example of how cast stone can work well in contemporary architecture



Cast stone cills and band course formed a central part of the building's design