



ATHENA 60:60

Lightweight, flexible fire barrier,
fully certified 60 minutes on timber

DESCRIPTION

FIREFLY™ Athena 60:60 is designed to be installed as a two-layer fire barrier system, certified for use on timber to provide compartmentation of larger spaces. Exceeds the Fire Barrier requirements of Building Regulations: Approved Document B (Fire Safety) with 60 minutes Integrity and 60 minutes Insulation.

KEY BENEFITS

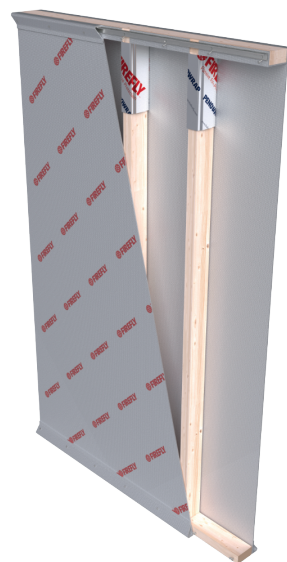
- 60 minutes Integrity, 60 minutes Insulation from both sides
- IFC Certified for use on timber – BS476 Parts 20 & 22
- Lightweight, flexible and easy to handle and cut
- Installer-friendly product with installation savings of 30% compared to a triple layer system
- Ideal for lofts and roof voids with restricted access and space
- Works with **FIREFLY™ PENOWRAP** for a perfect barrier solution on timber
- Utilises standard fixings, angles and high temperature adhesives approved for all **FIREFLY™** barriers

USE AREAS

FIREFLY™ Athena 60:60 is particularly suited for use as a certified fire barrier system on timber. Its unique construction and ease of handling and installation make it perfect for areas involving timber and restricted access / working space such as lofts and roof voids in Social Housing, Care Homes and Student Accommodation.

CONSTRUCTION

Manufactured using layers of woven and non woven glass fibre, specially treated with a proprietary coating to greatly increase fire resistance, and aluminium foil. The product is designed to be installed as a 2-layer system either side of timber, utilising other **FIREFLY™** products including **PENOWRAP** and High Temperature Adhesive and stainless steel staples.



TITLE	FIREFLY™ ATHENA 60:60
DESCRIPTION	Lightweight, flexible Fire Barrier – combined Insulation and Integrity
CERTIFICATION	Third Party Certified by IFCC. Certificate number: IFCC 1578
APPLICATION	Vertical – 2 layer system 60:60 from both sides
PROPERTIES	Description: Non-toxic / user friendly / flexible / durable. Easy to manipulate and cut to shape Colour: White Coating: A chemical treatment to optimise thermal properties and help prevent fibre migration Min Thickness: 10mm
SPECIFICATIONS	Vertical: Exceeds 60 minutes integrity with 60 minutes insulation when tested to BS 476 parts 20/22: 1987
CLASSIFICATIONS	Tested to BS476 parts 6 and 7 – Pass (propagation and surface spread of flame)
DIMENSIONS AND PACKAGING	Width: 127cm Roll Length: 6 linear metres Roll Area: 7.62 Square metres Packed: Concertinaed and individually wrapped in polythene Min Weight: 2.4kg/m ²

08/21-1

All **FIREFLY™** cavity barrier products must be installed in compliance with the **FIREFLY™** Installation Guide, which is provided upon request. Deviation from these drawings should not be carried out without written authority from the **FIREFLY™** Technical Department.

All figures quoted are nominal, believed to be true at the time of printing and are presented without guarantee. It is up to the user to determine the suitability of use.

T: +44 (0) 1706 758817

E: sales@tbafirefly.com

E: technical@tbafirefly.com

W: tbafirefly.com



TBA 
Protective Technologies Ltd