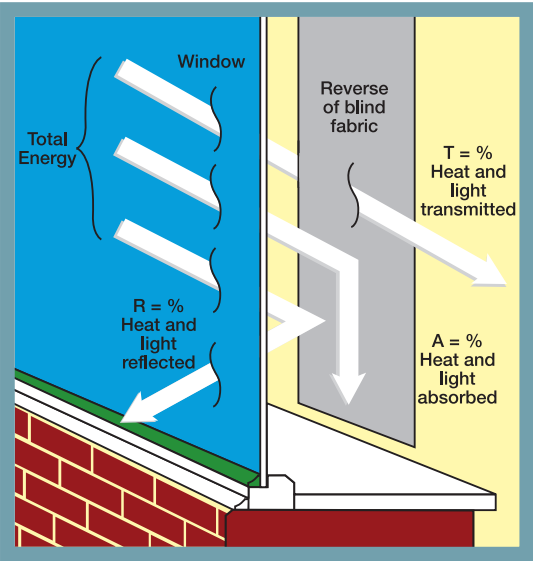




SOLAR, OPTICAL AND COLOUR FASTNESS PROPERTIES

SHADING CO-EFFICIENT

The solar heat gain with the blind at the window divided by the solar heat gain with no blind at the window. The lower the shading co-efficient, therefore, the higher the efficiency of the fabric. The test results in the table below have been achieved using a single 6mm glass glazing system.



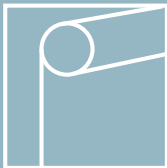
TESSERA	SOLAR, OPTICAL PERFORMANCE CHART													
	SOLAR T _s R _s A _s			OPTICAL T _s R _s A _s			SC CF DIM OUT			UV BLOCK	G TOT SG DG TG DG LE			
Arctic White	21	69	10	17	82	1	0.33	6+	2	94	0.26	0.28	0.29	0.33
Desert Sand	20	60	20	15	68	17	0.42	6+	3	95	0.31	0.32	0.35	0.41
Tuscan Beige	21	62	17	17	73	10	0.40	6+	2	95	0.31	0.32	0.33	0.37
Windspray Grey	18	53	29	14	60	26	0.49	6+	3	94	0.36	0.37	0.38	0.42
Shale Grey	14	44	42	9	51	40	0.57	6+	3	95	0.39	0.41	0.42	0.45
Black Iron	4	8	88	4	9	87	0.92	6+	3	95	0.59	0.59	0.60	0.61

T: % Transmittance R: % Reflectance A: % Absorption SC: Shading Co-efficient CF: Colour Fastness Dim out: 1 = High light penetration, 4 = Low light penetration, 5 = Blackout
UV Block: the percentage of UV light blocked by the fabric GTOT: SG = Single Glazed, DG = Double Glazed, TG = Triple Glazed, DG LE = Double Glazed Low Emissivity.

Tessera

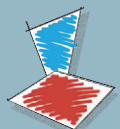
Performance Fabrics for Roller & Vertical Blinds

ARCHITECTS SPECIFIERS CONTRACTORS



FIRE PROTECTION

Tessera meets FR standard BS 5867 Part 2 Type B. Further information is available on request.



PENTEL

North West, West Midlands & Wales

Pentel Contracts Limited • Dyer Street, off Ordsall Lane
Salford • Manchester • M5 4TH

t • 0161 872 7642 f • 0161 872 7636

e • info@pentel-contracts.com www.pentel-contracts.com



DEARNLEYS

Rest of UK

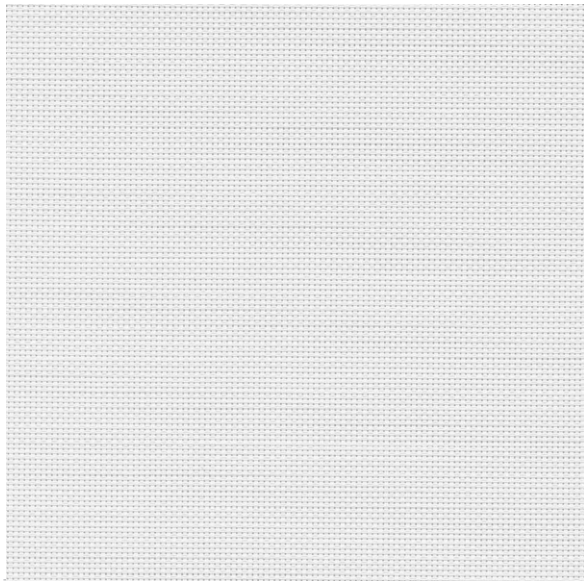
Dearnleys Limited • 120-128 Wrenthorpe Road
Wrenthorpe • Wakefield • W.Yorkshire WF2 0JN

t • 01924 371 791 f • 01924 386 001

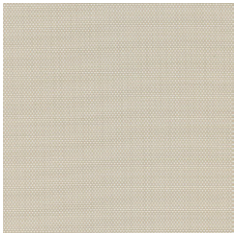
e • info@dearnleys.com www.dearnleys.com

CI/SfB 1976 reference by SfB Agency

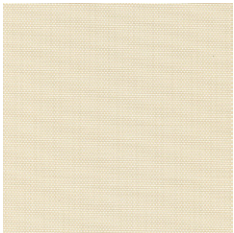
(76.7) X



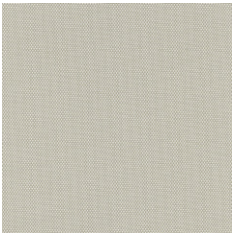
arctic white



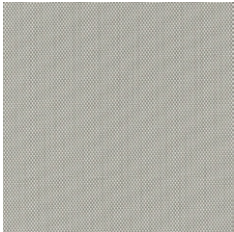
desert sand



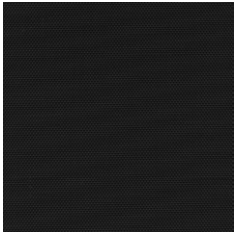
tuscan beige



windspray grey



shale grey



black iron

Tessera

Performance Fabrics for Roller & Vertical Blinds

COLOUR RANGE	6
ROLLER BLIND WIDTH	3.00m (118")
FABRIC COMPOSITION	75% pvc 25% polyester
FABRIC WEIGHTS	280g/m ² (8.3oz/yd ²)
FLAMMABILITY STANDARDS	Complies with BS 5867 (1980 Part 2, Type B) CAN/ULC-S109-03 NFPA 701 (Large) AS/NZS 1530.3 – 1999
OPENNESS	3%
COLOUR FASTNESS	Tested in accordance with BS EN ISO 105-B01:1999
CLEANING	Wipe clean
GTOT	A measure of total solar energy that passes through the glazing system and the fabric
AVAILABILITY	Ex-stock
FABRIC SAMPLES	Available on request

AT A GLANCE



roller blind



vertical blind



flame retardant



wipe clean



UV Protection Factor tested to European UV Standard 801



Fabrics featuring the Greenshield mark have been tested to confirm no harmful VOC's or hazardous substances will be released to the environment in quantities that are recognised as potentially dangerous to occupants of dwellings or buildings



Colours reproduced here may vary from the actual colours due to the limitations of the printing process. Great care has been taken to ensure that the fabric swatches and the information supplied are correct, however specifiers and customers are advised to check the suitability of materials before use.

LARGER SAMPLES ARE AVAILABLE ON REQUEST.