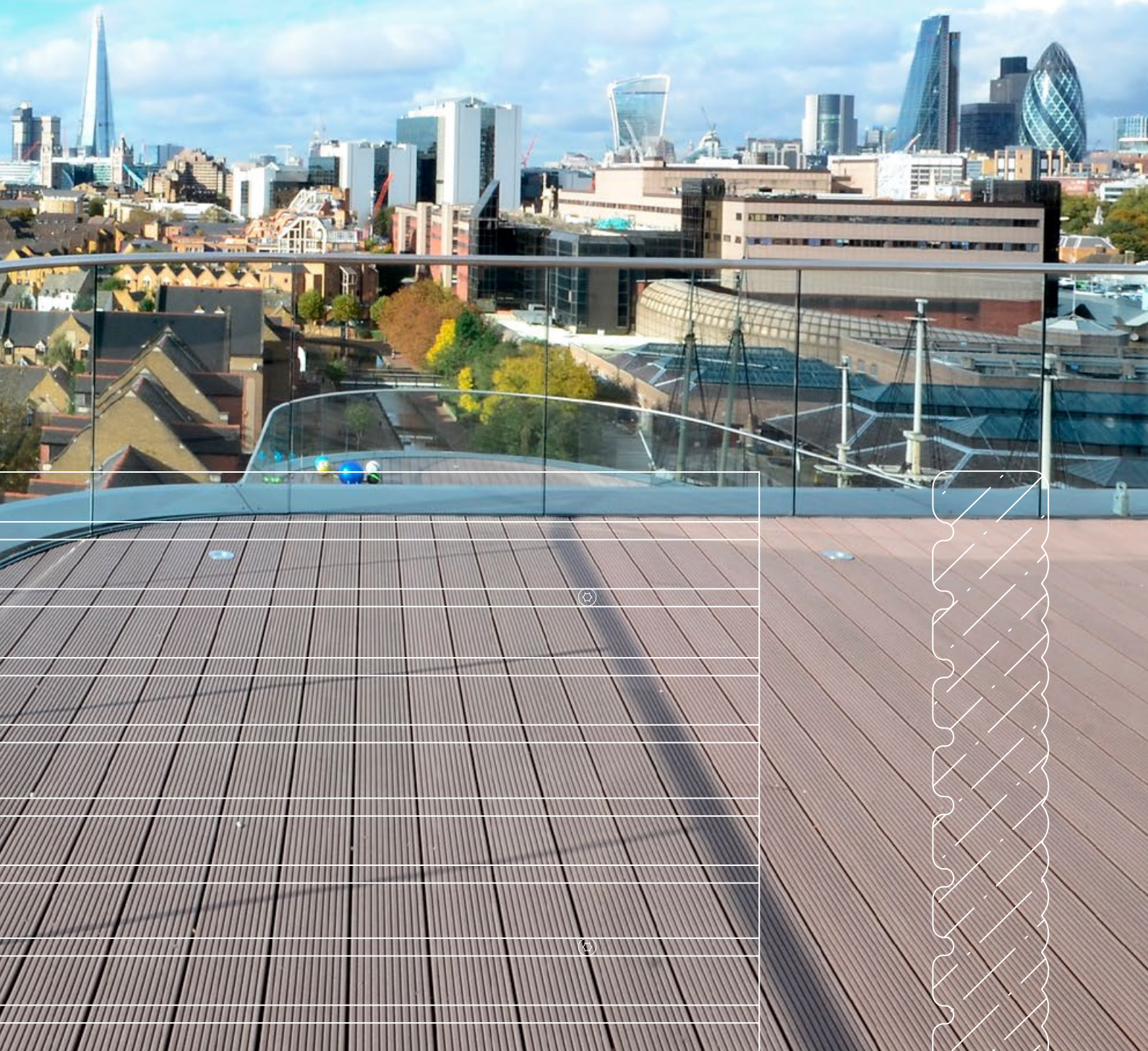




Product Selector 2.0

nbsPlus

Composite Decking

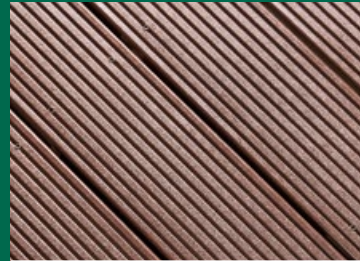


Contents



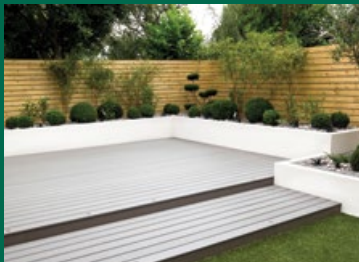
Introduction

01



Product Profile

08



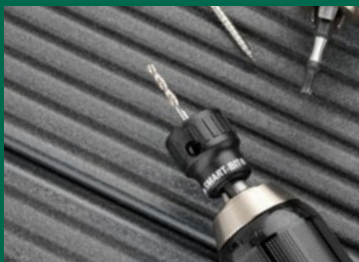
Fixture & Fittings

12



Applications

20



Technical Information

38



Order Information

52



Q&A

54



Our Values

56

Sustainable outdoor living.

Welcome to the ecodek®
Product Selector V2.0

Ecodek is committed to excellence. Our reputation in the landscape, decking and construction markets has been earned by providing high quality, innovative and sustainable products for many different sectors of the industry. We work with leading architects, designers and contractors across the world developing outdoor flooring and decking products, and helping to transform external domestic, commercial and walkway spaces for their clients. ecodek® is the only recycled WPC decking product in the UK that offers a 25-year warranty. We hope you enjoy specifying the ecodek® range of products.

Ecodek is part of the Epwin Group and is a trading name of Specialist Building Products Ltd



Our Environmental Responsibility

At Ecodek we believe that the recycling and reuse of waste materials is key to a truly sustainable future.

ecodek® is a wood polymer composite decking system that is made from recycled materials. It is a sustainable, low maintenance alternative to timber and is used in a wide range of construction applications. We take pride in the fact that we make some of the highest quality products in the industry while our production processes have a very low impact on the environment.

ecodek® is a robust system manufactured in the UK. It is a wood polymer composite (WPC), which means that it is made from a blend of recycled hardwood flour and HDPE polymer. The material composition is approximately 55% PEFC™ certified reclaimed hardwood fibres (Beech) and 45% high-density polyethylene recycled plastic milk bottles (HDPE).

ecodek® boards are solid in cross-section and do not have the weaker, open core structure associated with many poorer quality products.

We are so sure of ecodek's quality that we back it with a 25-year warranty against structural failure. The boards are also fully recyclable, and 100% of any material that is returned to us, or products that are rejected under our quality control system, are recycled back into production.

ecodek® is supplied through a Chain of Custody process that provides full traceability for all our products. The process records the entire path between the 'forest gate' and the end user, including the intermediate stages of manufacture, storage, sales and distribution.

Our environmental stewardship means that we work with our supply partners in developing the sustainable and responsibly sourced materials that go into our products. Our production techniques lead the industry with their ground breaking sustainability and we have a strong commitment to local biodiversity work.

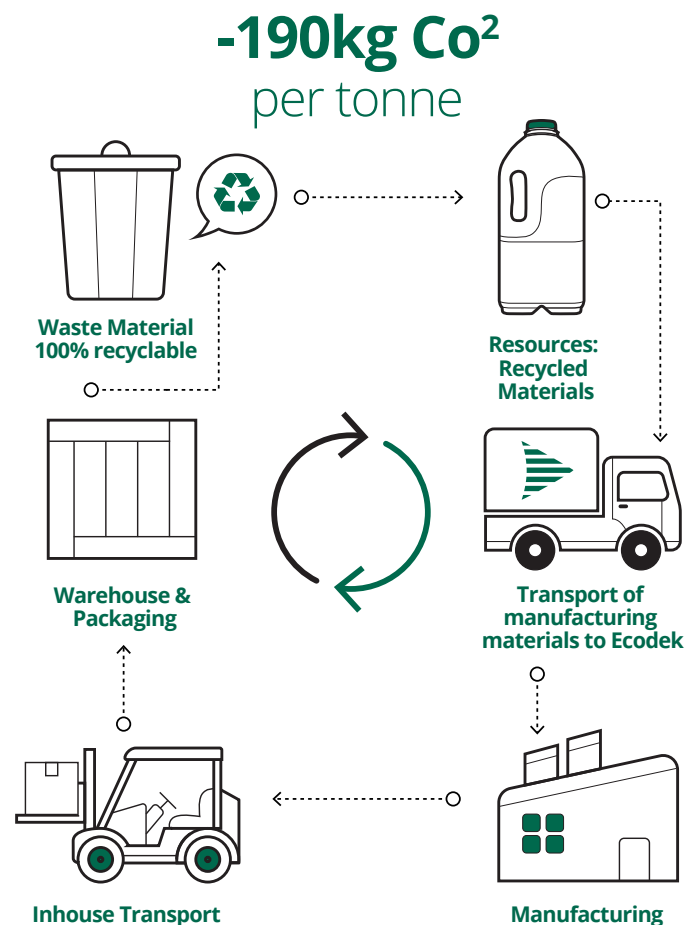
ecodek® is carbon negative

The manufacture of ecodek® wood polymer composite products is a carbon negative process. This is a bold claim but is one that has been independently verified and it underpins our ethos of pursuing sustainability in our design and manufacturing operations.

A life-cycle assessment undertaken by the BioComposites Centre of Bangor University considered the production of ecodek® products on a cradle to factory gate basis. This process accounted for all significant materials, transport, energy use and packaging inputs.

The results confirmed that the production of ecodek® had the net effect of removing carbon dioxide from the atmosphere rather than adding to it; a carbon negative product. It is a tremendous achievement in modern manufacturing and one that demonstrates our company's environmental credentials.

What does this mean in practice? The Forestry Commission considers that an average tree locks up 2kg of CO₂ per year. By comparison, the ecodek® manufacturing process locks up the same amount of carbon as 300,000 trees every year.

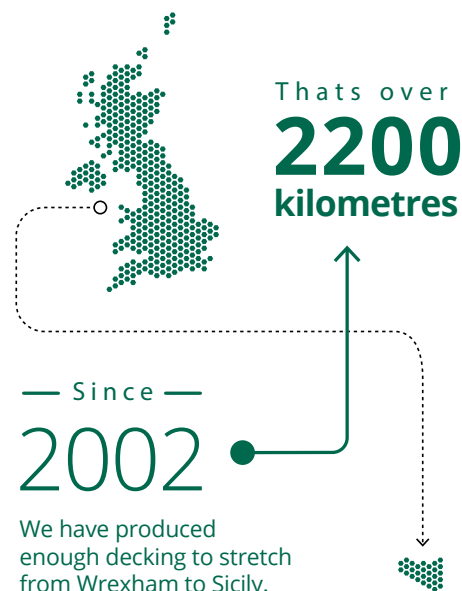


ecodek® sustainability credentials



A TOTAL EQUIVALENT OF:

111
MILLION
4 - PINT
MILK
BOTTLES



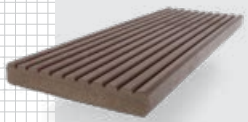
nbsPlus

Q40 Fencing
Q55 External decks, boardwalks and bridges

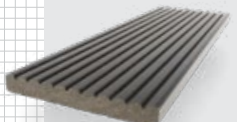
PRODUCT PROFILE

AT RANGE

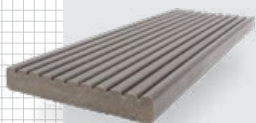
Dark Brown



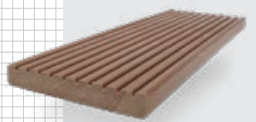
Black



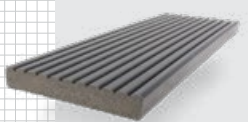
Pebble Grey



Light Brown



Slate Grey



ecodek® Advanced Technology (AT) Decking Board

The AT board is manufactured from an innovative, high quality wood polymer composite (WPC) material, specifically developed for decking boards. Although they have a similar appearance to hardwood timber, their solid cross section makes them robust, highly slip resistant and suitable for many construction applications. Featuring recycled material content the AT board is the choice of the professional contractor as it overcomes many of the performance problems associated with timber, PVC and moulded composite alternatives. The AT board has strong environmental credentials, requires little maintenance and can be ordered in multiple length options offering minimal wastage.



Minimal Waste



Long Life



Solid Build

Environmentally
FriendlyHigh Slip
ResistanceLow
Maintenance

Product Specification

Colour: Slate Grey, Pebble Grey, Dark Brown, Light Brown and Black

Profile Dimensions: 21mm x 136mm Groove/Ribbed reversible

Standard Lengths: Any length between 1.5m and 6m* (3.6m standard)

Weight: 3.0kg/m (linear)

For product codes see pages 59-60

*Deckboards made to order in any length from 1.5 - 6m. Up to 9m available for an extra charge of 10%

Pebble Grey Grooved

Light Brown Ribbed



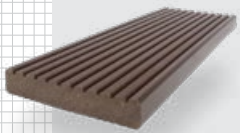
nbsPlus

Q40 Fencing
Q55 External decks, boardwalks and bridges

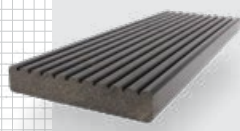
PRODUCT PROFILE

HD RANGE

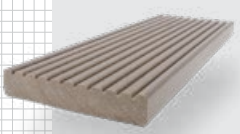
Dark Brown



Black



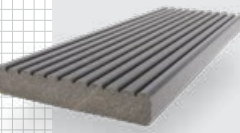
Pebble Grey



Light Brown



Slate Grey



ecodek® Heavy Duty (HD) Decking Board

The HD board is manufactured from an innovative, high quality wood polymer composite (WPC) material, specifically developed for commercial decking applications. HD boards will not 'snake' along their length, a condition that can lead to extended installation times. Due to the precision of its manufacture the HD range has excellent alignment and dimensional stability. HD board material is coloured throughout and not just on the surface. This ensures that the boards retain a consistent colour even after weathering and, unlike other surface painted composite boards, will not suffer from surface flaking in low temperature conditions. With a 25-year warranty, HD boards will support your commercial application for years to come.



Minimal Waste



Long Life



Solid Build

Environmentally
FriendlyHigh Slip
ResistanceLow
Maintenance

Product Specification

Colour: Slate Grey, Pebble Grey, Dark Brown, Light Brown and Black

Profile Dimensions: 25mm x 136mm Groove/Ribbed reversible

Standard Lengths: Any length between 1.5m and 6m*

Weight: 3.6kg/m (linear)

For product codes see pages 59-60

*Deckboards made to order in any length from 1.5 - 6m. Up to 9m available for an extra charge of 10%

Light Brown Grooved

Black Ribbed



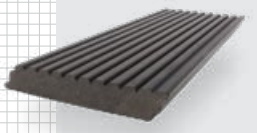
nbsPlus

Q40 Fencing
Q55 External decks, boardwalks and bridges

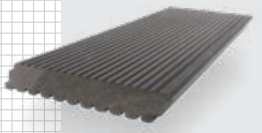
PRODUCT PROFILE

STADIA

Grooved



Ribbed



*Available in all colours

ecodek® Stadia Decking Board

The Stadia range of decking boards were developed specifically to satisfy fire prevention requirements at public events. Ecodek have designed the Stadia profile so that debris is prevented from dropping between deck boards and subsequently collecting underneath as a fire safety hazard. The Stadia board has been used for decks installed at national stadiums since its original development in 2012. It is the natural choice for sports and hospitality flooring areas within the public or sporting arena space.



Minimal Waste



Long Life



Solid Build

Environmentally
FriendlyHigh Slip
ResistanceLow
Maintenance

Product Specification

Colour: Slate Grey, Pebble Grey, Dark Brown, Light Brown and Black

Profile Dimensions: 25mm x 134mm

Standard Lengths: Any length between 1.5m and 6m*

Weight: 3.6kg/m (linear)

For product codes see pages 59-60

*Deckboards made to order in any length from 1.5 - 6m. Up to 9m available for an extra charge of 10%

Slate Grey Grooved

Black Ribbed



n55Plus

Q40 Fencing
Q55 External decks, boardwalks and bridges

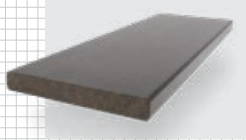
PRODUCT PROFILE

FASCIA

Dark Brown



Black



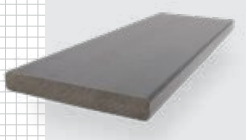
Pebble Grey



Light Brown



Slate Grey



ecodek® Fascia Board

The ecodek® Fascia Board has been specifically designed to cover the edges of commercial and domestic decks, to give them a well finished look. Fascia boards also have a practical application in that they are designed to withstand heavy traffic and will help resist wear on public decking and stepped area applications, protecting the edge of the deck boards for years to come. Designers might wish to explore the excellent effects that can be achieved by using contrasting colours on perimeter and fascia boards.



Minimal Waste



Long Life



Solid Build

Environmentally
FriendlyHigh Slip
ResistanceLow
Maintenance

Product Specification

Colour: Slate Grey, Pebble Grey, Dark Brown, Light Brown and Black

Profile Dimensions: 19mm x 136mm

Standard Lengths: 3.60m

Weight: 2.89kg/m (linear)

For product codes see pages 59-60

Pebble Grey Fascia

Dark Brown
& Black Fascia



NSPlusQ40 Fencing
Q55 External decks, boardwalks and bridges

FIXTURE AND FITTINGS

SUPPORT BEAMS

Superstiff / Low Profile Bearers, Heavy Duty Posts
and Moulded Post CapsSuperstiff Support
Beam

Low Profile Bearer



Post



Post Cap



ecodek® wood polymer composite sub structure bearers and beams

A deck is only as good as the sub-structure beneath. If the sub-structure is made of timber and the area under it is damp or sited close to exposed or wet areas, the sub-structure will almost certainly rot. ecodek® Superstiff Beams and Low Profile bearers will protect the decked area above them from damp and rot. This is particularly useful for those applications where water is present or is featured such as jetties, pool decks, hot tubs, coastal residential areas and other marine applications.



Minimal Waste



Long Life



Solid Build

Environmentally
FriendlyHigh Slip
ResistanceLow
Maintenance

Product Specification

Colour: Slate Grey, Pebble Grey, Dark Brown, Light Brown and Black

Profile Description	Profile Dimensions	Standard Lengths	Weight Per Linear Metre
Superstiff Support Beam /Bench Slat	38mm x 88mm	3.60m / 4.80m	3.68KG
Low Profile Support Beam	40mm x 48mm	3.60m / 4.80m	2.11KG
Post	88mm x 88mm	1.83m / 2.44m	5.82KG
Post Cap	110mm x 110mm	n/a	n/a

For product codes see pages 59-60

Low Profile Bearer

Superstiff Bearer

nbsPlus

Q40 Fencing
Q55 External decks, boardwalks and bridges

FIXTURE AND FITTINGS

PEDESTALS & PADS

Fixed Height Pads, Adjustable Timber Decking Pedestals,
Slope Correctors for Decking



Pedestals, Pads and Slope Correctors

A range of fixed and adjustable pedestal supports offer a variety of options for the installation of ecodek® decking in locations such as balconies, podiums and roof decks. With variable and adjustable height options, our pedestals and packers allow speedy and accurate installation where the construction of a traditional substructure would not be appropriate or desirable. Correction for uneven surfaces and changes in the height of the substrate can be achieved accurately and simply whilst retaining full structural rigidity.

Product Specification

Profile Description	Standard Heights	A vast range of heights and combinations are available for different applications.
Fixed Height Paving Pads	1-17mm	
Adjustable Timber Decking Pads	25-365mm	
TD-Extra	85-380mm	
Slope Correctors	1-3 Percent	
TD-Mega Pad for Decking	10-1020mm	

For product codes see pages 59-60

Fixed Height
Paving Pads



Adjustable Pedestal



nbsPlus

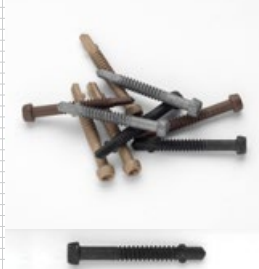
Q40 Fencing
Q55 External decks, boardwalks and bridges

FIXTURE AND FITTINGS

ACCESSORIES

Screws and Smart-Bit®

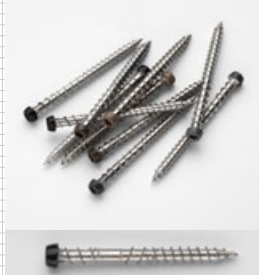
Balcony Screw



ecodek® fixing accessories

Ecodek have developed a range of screws to complement the finished look of the deck and to simplify installation. These screws are designed specifically for use on either steel or aluminium balcony substrates, or for timber and composite sub-frames. Each range has a coloured head to match the deck finish. Manufactured from stainless steel, the screws have a Torx-head drill bit included in the box. For pre-drilling and countersinking the board in one simple operation, the Smart-Bit® greatly reduces installation time.

Timber Screw

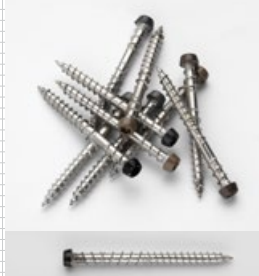


Product Specification

Colour: Slate Grey, Pebble Grey, Dark Brown, Light Brown and Black

Profile Description	Dimensions	Pack Qty
Balcony Screw	38mm	Box of 200
Timber Screw	63mm	Box of 200
Composite Screw	53mm	Box of 200
Smart-Bit®	3.15mm dia. x 30mm depth	1 or 5

Composite Screw



For product codes see pages 59-60

Composite Screw



Smart-Bit®



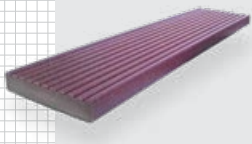
n55Plus

Q40 Fencing
Q55 External decks, boardwalks and bridges

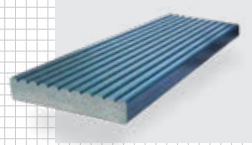
PRODUCT PROFILE

CUSTOM

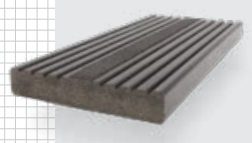
Grooved



Ribbed



Anti Slip inserts



Plaques



ecodek® custom decking options

We are a British manufacturer making all our wood polymer composite decking boards at our plant in Wrexham. In those instances where our range of standard colours may not meet a client's particular requirements, we offer a custom design service. Where a commercial requirement exists we are able to design bespoke profiles and produce unique colours and board lengths. For safety sensitive ramped and public arena applications we also manufacture ecodek® boards with anti-slip inserts in a range of colours.



Minimal Waste



Long Life



Solid Build

Environmentally
FriendlyHigh Slip
ResistanceLow
Maintenance

Product Specification

Colour: Colour range match to customer specification

Profile Dimensions: Alternative profile on application

Standard Lengths: Specific length on application

Anti-Slip board: Available in lengths from 1.5m to 3.6m

Name Plaque: Customer specification on application

*For custom requests please contact the technical team on 01978 667 840 or enquiries@ecodek.co.uk



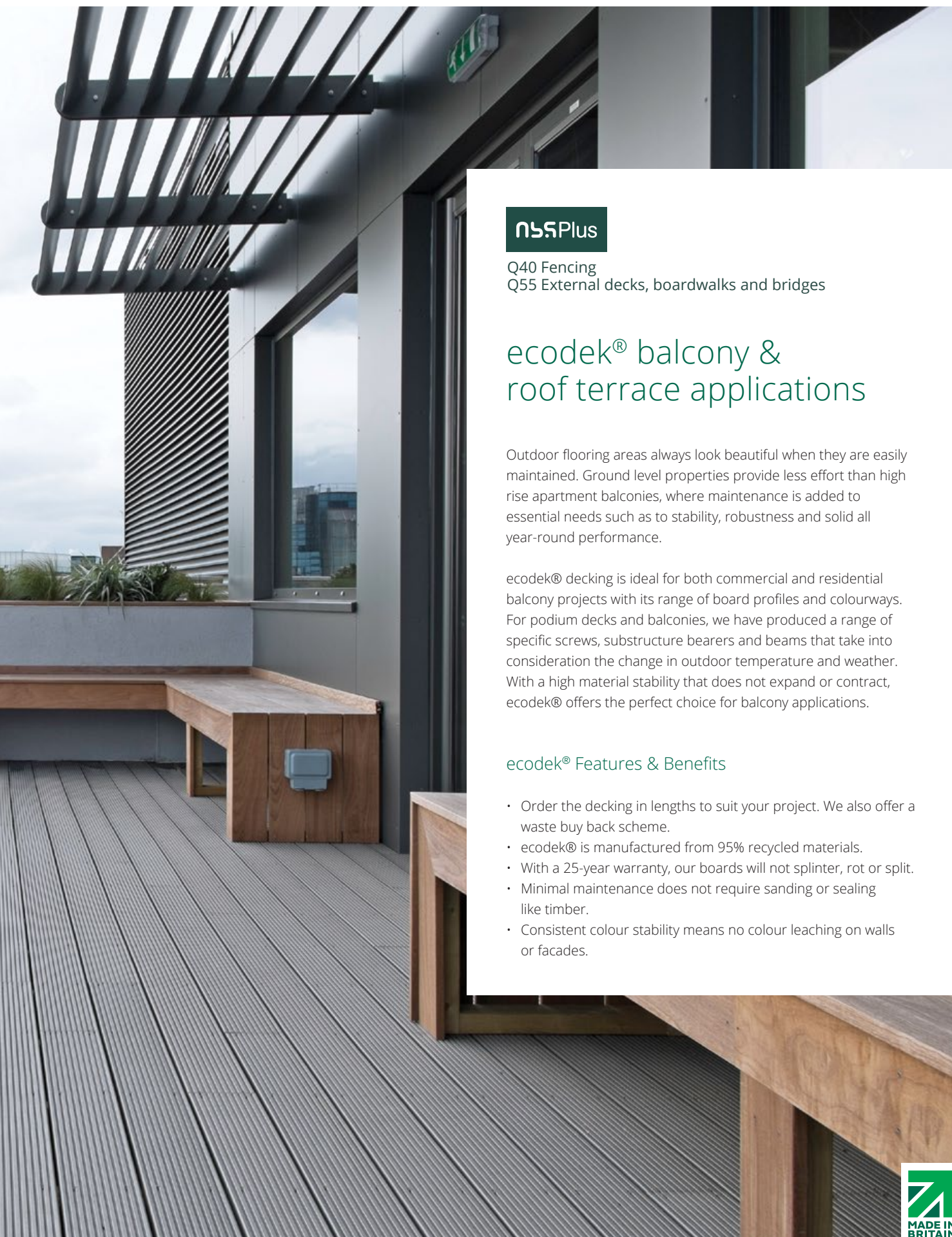


Minimal Waste

Application /

BALCONIES / ROOF TERRACES



**nssPlus**

Q40 Fencing
Q55 External decks, boardwalks and bridges

ecodek® balcony & roof terrace applications

Outdoor flooring areas always look beautiful when they are easily maintained. Ground level properties provide less effort than high rise apartment balconies, where maintenance is added to essential needs such as to stability, robustness and solid all year-round performance.

ecodek® decking is ideal for both commercial and residential balcony projects with its range of board profiles and colourways. For podium decks and balconies, we have produced a range of specific screws, substructure bearers and beams that take into consideration the change in outdoor temperature and weather. With a high material stability that does not expand or contract, ecodek® offers the perfect choice for balcony applications.

ecodek® Features & Benefits

- Order the decking in lengths to suit your project. We also offer a waste buy back scheme.
- ecodek® is manufactured from 95% recycled materials.
- With a 25-year warranty, our boards will not splinter, rot or split.
- Minimal maintenance does not require sanding or sealing like timber.
- Consistent colour stability means no colour leaching on walls or facades.





Low Maintenance

Application /

LANDSCAPING





nbsPlus

Q40 Fencing
Q55 External decks, boardwalks and bridges

ecodek® landscaping applications

With the versatility to adapt to urban or traditional design schemes, ecodek® decking systems allow the designer to transform commercial outdoor spaces and gardens into feature areas.

The choice of landscape architects and designers, ecodek® offers a breadth of landscaping application options for today's modern living.

For functional leisure spaces or architectural garden designs, the low maintenance features of ecodek® aid the designer to complete schemes without compromise. With a durable and robust deck board without the misgivings of natural timber, the AT or HD range gives the client a decking system that looks great, lasts for decades and re-uses high quality recycled materials.

ecodek® Features & Benefits

- Can be cut for herringbone patterned and multi-coloured design schemes.
- 95% of ecodek® is manufactured from recycled materials.
- Low potential for slip in either wet or dry.
- With a 25-year warranty, our boards will not splinter, rot or split.
- Does not promote mould or algae growth.

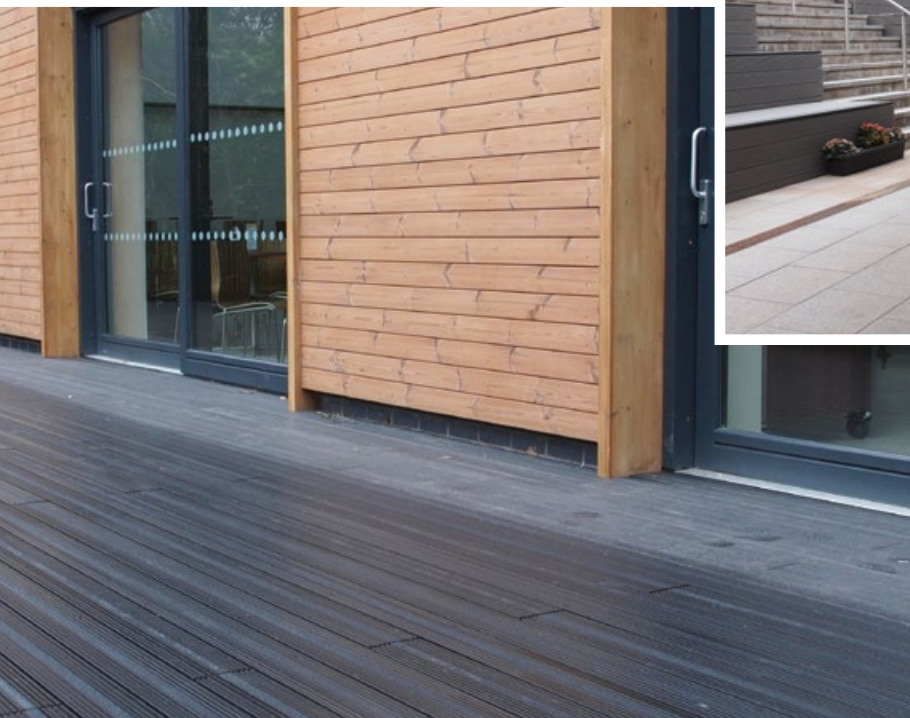




Environmentally Friendly

Application /

EDUCATION



n55Plus

Q40 Fencing
Q55 External decks, boardwalks and bridges

ecodek® education applications

Schools, colleges and further education facilities are now being tasked with meeting the highest level of environmental, health and safety regulations; while offering their students green outdoor spaces for rest and recreation. Consequently architects and designers may be drawn to compromise when it comes to function and form.

For maximum safety and demands on high usage and footfall, ecodek® boards offer an environmentally responsible choice for education

projects as our sustainably manufactured boards uses PEFC™ certified hardwood flour and polymer from recycled products. ecodek® boards also offer high noise absorption, low potential for slip and no fear of splinters common with timber decks. With an attractive range of standard colours and custom colours, ecodek® is the choice for a wide variety of educational applications.'

So the problem simply becomes one of designing an exciting and usable space with our attractive range of standard and custom colours.

ecodek® Features & Benefits

- Environmentally friendly.
- Low potential for slip in either wet or dry.
- Custom colours available.
- Ideal for high capacity footfall.





High Slip Resistance

Application /

HEALTHCARE





nssPlus

Q40 Fencing
Q55 External decks, boardwalks and bridges

ecodek® healthcare applications

Designs for the outdoor environment that elderly and infirm residents frequent should concentrate on health and safety concerns and require more careful planning than many other public building projects.

Therefore the prevention of slips and falls features more highly than on most other outdoor flooring applications and design schemes that utilise decking like ecodek®, with its high slip resistance and anti-slip features, can reduce these risks significantly.

ecodek® boards offer high slip resistance in all weathers as standard and doesn't promote mould or algae growth. In addition, for disability ramps or gently sloping access paths, Ecodek can supply decking boards with a range of coloured anti-slip inserts, allowing visual identification in areas where extra care must be taken.

ecodek® also offers the chance to design pleasant and restful outdoor areas and create smooth and secure connections between them.

ecodek® Features & Benefits

- Low potential for slip in either wet or dry.
- Anti-Slip inserts available.
- Visible identification of potential areas for high slip.
- Does not promote mould or algae growth.



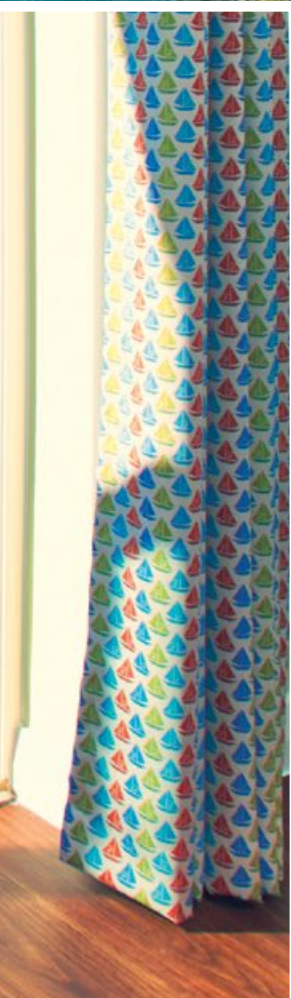
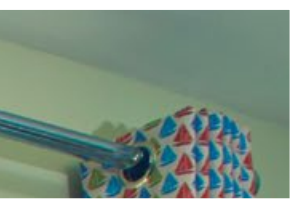


Low Maintenance

Application /

LEISURE





n55Plus

Q40 Fencing
Q55 External decks, boardwalks and bridges

ecodek® leisure applications

Decks that are constructed around holiday homes must be tough, easy to clean, slip resistant and have a very low maintenance requirement.

ecodek® entirely fits this bill. The AT board with its advanced material formulation is tougher than most and its solid cross section means that it is quiet to walk on. It also lasts longer and has more impact resistance than timber and other composite deck boards. Where yet more strength is required the ecodek® HD board can manage the load.

With its HDPE polymer construction, ecodek® is

guaranteed not to promote mould or succumb to rot or fungal decay. It is also easy to clean and doesn't require an annual protective coat of paint or varnish. With holiday makers, in particular children, the likelihood of a slip could be high. ecodek® has a low potential for slip, wet or dry. Extra grip can be ensured with additional anti-slip inserts that are laid into the board. Both boards and grip strips are available in several colours.

With outstanding environmental credentials, Ecodek delivers a high performance decking system that is durable, looks great and is made with a 95% blend of recycled materials.

ecodek® Features & Benefits

- Low potential for slip in either wet or dry.
- With a 25-year warranty, our boards will not splinter, rot or split.
- Minimal maintenance does not require sanding or sealing like timber.
- Does not promote mould or algae growth.





Long Life, 25 Year Warranty

Application /

STADIA





n55Plus

Q40 Fencing
Q55 External decks, boardwalks and bridges

ecodek® stadia applications

The Stadia range of decking boards was developed specifically around fire regulations at public events.

Debris that drops between the deck board will collect underneath and may present a fire hazard. We designed the Stadia board with a unique side face profile that will not allow debris to fall through.

Stadia is the unique choice for all sports and hospitality flooring areas within the public or sporting arena space. With a 25-year warranty ecodek® offers peace of mind for high capacity traffic on large public space floored areas.

ecodek® Features & Benefits

- Unique design for stadia applications.
- With a 25-year warranty, our boards will not splinter, rot or split.
- Side face profile prevents debris collection.
- Ideal for high capacity traffic.



High Slip Resistance

Application /

MARINE



n55Plus

Q40 Fencing
Q55 External decks, boardwalks and bridges

ecodek® marine applications

A well designed and installed deck can transform an outdoor space into a modern space to dine, relax or for the children to play. Coastal getaways, seaside properties, boardwalks and marinas always look beautiful when they are easily maintained, but just as importantly when they offer safety in wet conditions. With low moisture absorption and high slip resistance, ecodek® AT and HD boards provide a durable, safe decking system for marine applications which will not rot or be susceptible to salt.

The profile of the HD range offers more strength that will allow jetties to be constructed with longer distance between their supports. Our Superstiff beams and Low Profile Bearers also aid the life of marine applications with recycled substructures able to combat the threat of damp and wet conditions.

ecodek® Features & Benefits

- Low potential for slip in either wet or dry conditions.
- With a 25-year warranty, our boards will not splinter, rot or split.
- Does not promote mould or algae growth.
- Minimal maintenance does not require sanding or sealing like timber.

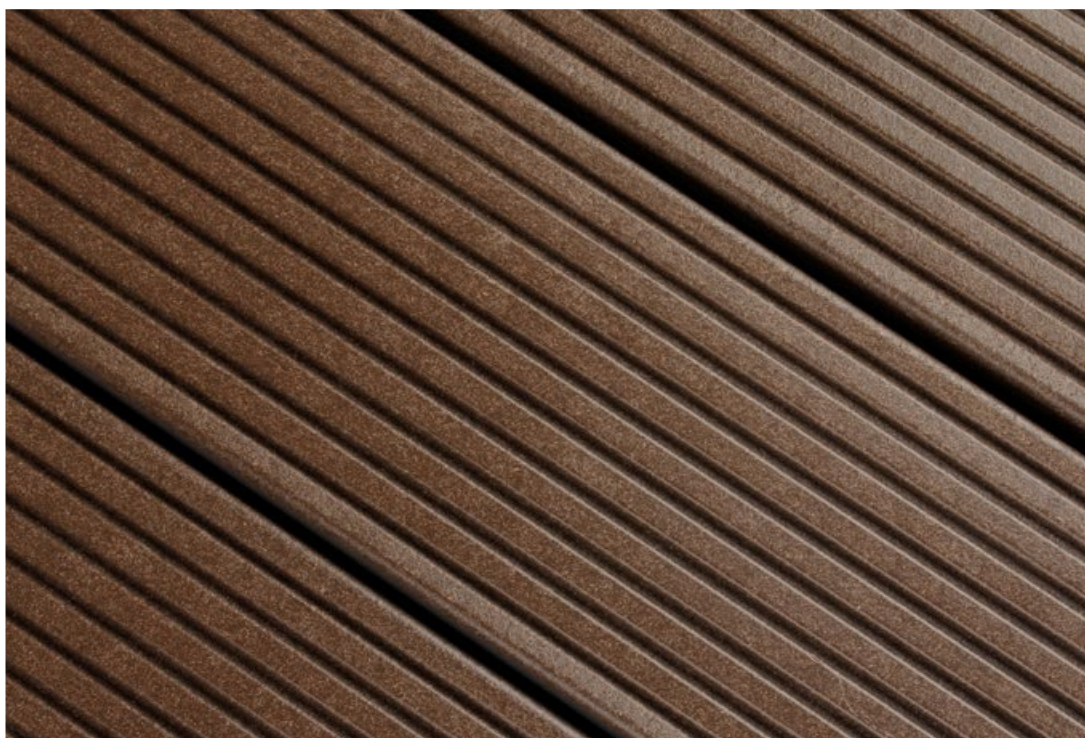
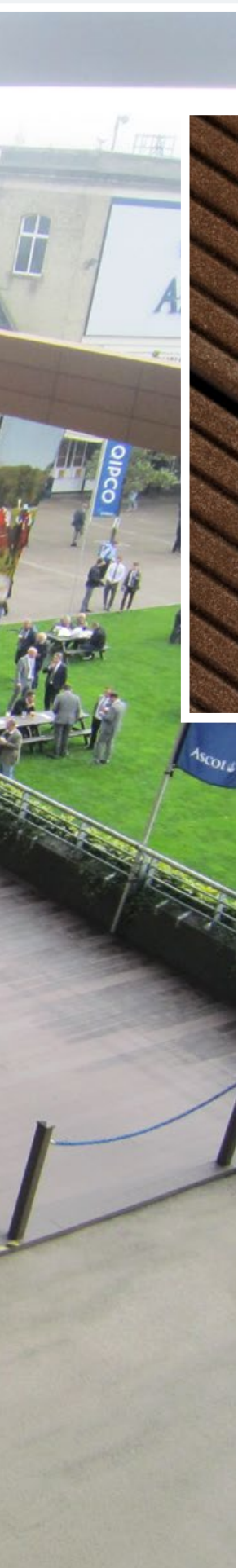


High Slip Resistance

Application /

EVENTS





n55Plus

Q40 Fencing
Q55 External decks, boardwalks and bridges

ecodek® event flooring applications

For expansive deck areas such as exhibition floors and larger terrace areas, ecodek® offers many advantages to designers and contractors with its wood polymer composite material able to withstand the rigours of indoor or outdoor events.

With contractors working around limited installation times, the ability to install longer

length boards up to 9 metres vastly reduces installation times.

Having a material composition of wood and polymer, ecodek® also offers a high level of slip resistance for visitors and a robustness and rigidity that will take the load bearing weight of typical exhibition installations.

ecodek® Features & Benefits

- Order the decking in lengths to suit your project. We also offer a waste buy back scheme.
- Indoor and outdoor use.
- High slip resistance in either wet or dry conditions.
- Robust and rigid.



Low Maintenance

Application /

RESIDENTIAL





NS Plus

Q40 Fencing
Q55 External decks, boardwalks and bridges

ecodek® residential outdoor flooring applications

Ecodek works with many award-winning architects and designers that are engaged in the development of prime residential estate.

Suitable for both single and multiple occupancy applications, ecodek® brings durability and robust wearability to residential applications. Offering a range of benefits over natural timber and other composite material,

ecodek® allows designers and contractors to offer their clients a high performance, UK manufactured, recycled decking system with a 25-year warranty.

For the residential consumer, the benefits are minimal maintenance with a highly slip resistant deck which will not rot, splinter or promote mould and algae growth, leaving a beautiful deck all year round.

ecodek® Features & Benefits

- Low maintenance - ecodek® will not need sanding or sealing unlike timber.
- With a 25-year warranty, our boards will not splinter, rot or split.
- Low potential for slip in either wet or dry.
- Does not promote mould or algae growth.





ecodek® Technical Data

For technical product information and specifications, the following pages provide all the information you will need to design and construct your ecodek® project.

Information regarding FSC®, PEFC™ Certification and application notes for construction guides are featured within this section to help formulate your design.

Colour match

ecodek® is made from hardwood fibres in order to minimise natural UV fading. There will still be some fade visible over the first few months giving a more textured appearance and this is a standard process called weathering. Any initial colour difference between boards is due to the natural colour variance in the wood fibres and once weathered, the boards will all be a similar colour tone. The most fade resistant colours are Slate Grey, Dark Brown and Black. Colour variation can occur from batch to batch, so we advise ordering boards for your project in one delivery if there is a large area on display. The following chart shows the colour palette and the estimated variance that can occur through weathering.

Colour Palette

Colour	Sample	LAB	RGB	RAL
Light Brown	Weathered	43.36	126.1	8024
		9.08	96.4	
		13.16	76.2	
	Non-weathered	34.97	105.5	8025
		10.16	75.8	
		15.19	58.5	
Dark Brown	Weathered	25.46	74.7	8028
		6.77	56.4	
		8.1	48.4	
	Non-weathered	23.69	70.9	8014
		7.07	52.3	
		8.15	44.5	
Pebble Grey	Weathered	52.47	128.1	7030
		0.36	125	
		3.05	120	
	Non-weathered	39.39	97.6	080 4005
		1.44	91.8	
		3.41	87.3	
Slate Grey	Weathered	37.71	88	7012
		-0.41	88.9	
		-0.04	88.8	
	Non-weathered	31.37	73.3	7024
		-0.07	73.9	
		-0.52	74.6	
Black	Weathered	20.04	48.8	9011
		-0.01	48.4	
		0.6	47.5	
	Non-weathered	18.04	44.4	9004
		0.12	44	
		0.19	43.8	

ecodek® Material Specification Data

This Specification data sheet is designed as a quick & simple guide to using ecodek®, please ensure that you also read Technical Data in this guide in full before commencing any construction projects.

Product and Company Identification

Product Name: ecodek®
 Manufacturer: Specialist Building Products Limited
 Ecodek, Unit 13 Abenbury Way, Wrexham Industrial Estate.
 Wrexham. LL13 9UZ.
 Issue Date: 22/06/2016

Composition / Information on Ingredients

Ingredient Name Contents
 Wood fibres 55%
 Polyethylene 45%

Hazards Identification

Under normal conditions and usage, the product is non-hazardous. The product does however contain wood dust fibres. Certain wood dust fibres are considered hazardous if the airborne concentration exceeds the standard occupational exposure limits for extended periods. Exposure to such fibres is considered insignificant with this product due to the fact that the wood dust is encapsulated within the polymer matrix.

First Aid Measures

Inhalation: Unlikely inhalation hazard. Ingestion: No adverse effects likely.
 Skin: Non-hazardous.
 Eyes: Flush eyes with water until clear. If irritation continues, seek medical advice.

Fire Fighting Measures

Flash Point: Greater than 350° Centigrade. Extinguishing Media: Powder. Dry chemicals (sand, dolomite etc). Water spray (fog or mist). Carbon dioxide.

Special Fire Fighting Procedures

Dense smoke emitted when burning with low oxygen levels. Possible dust explosion if in a large enough quantity. Use breathing equipment if in enclosed area.
 Treat as a wood fire.

Accidental Release Measures

If spilt, sweep up material and discard. No special landfill procedures required, dispose of in accordance with local regulations.

Personal Protective Equipment Measures

Any machining operations must be done in a well ventilated area. Use dust mask rated to BS EN149 if Occupational Exposure Limit is likely to be exceeded otherwise. Wear safety glasses or visor when carrying out any machining operations.

Handling and Storage

Keep away from heat, sparks, open flame and strong oxidising agents. Do not stack improperly. ecodek® is heavier than normal wood, take care when lifting.

Physical Appearance and Odour

Slight hardwood odour.
 Solubility in water: Insoluble.
 Melting point: 180° - 220° Centigrade. Percent Volatile: Negligible.

Reactivity Stability

Material is stable.
 Conditions to avoid: Heat and flame, ignition sources.
 Materials to avoid: Strong oxidising agents. Under combustion conditions, the following products may be generated: Carbon dioxide, carbon monoxide, water vapour, trace VOC's, formic acid, acetic acid.

Toxicological Information

No Occupational Exposure Limit (OEL) or Maximum Exposure Limit is specified for this product. Use wood dust as a worse case guide – OEL5mg/m³ – 8-hour time weighted average. (See Health & Safety Executive guidance note EH40 for more information.)

Transport Information

This material is not regulated by the Department of Transport.

Please refer to the website for Full Detailed Installation Instructions.

ecodek® Material Specification Data

Mechanical Property	Test Method	Value
Ultimate Tensile Strength (UTS)	EN ISO 527	10 MPa
Elastic Modulus (MOE)	EN ISO 178 Span 150mm	2 GPa
Maximum Stress (MOR)	EN ISO 178 Span 150mm	22 MPa
Impact Notched	EN ISO 179 : Part 1	3 kJ/m ²
Water Absorption	ASTM D1037	0.6%
Coefficient of Expansion	Across length	0.08 mm/m/°C
Screw Retention (composite decking screw)	Compared to Red Cedar	76% greater
Nail Retention (5mm ring shank)	Compared to Red Cedar	18% greater
Density	EN ISO 1183	1.11 ± 0.05 g/cm ³
Slip Resistance (Grooved/Dry)	BS ISO 15676	PTV=58 (Low potential for slip)
Slip Resistance (Grooved/Wet)	BS ISO 15676	PTV=37 (Low potential for slip)
Hot Nut Test	BS 4790:1987	16mm (Approved for domestic & contract use)
Mid Span Point Load	BS 1195:1998	Refer to Load Span Table

Carbon Footprint	Assessment Method	Value
GHG Emissions	Life Cycle Assessment (LCA)	-190kg CO ₂ eq. per tonne

Specification Data: FSC® & PEFC™ Certification

Here at Ecodek, we go to extra lengths to ensure that the wood fibres used to make our composite decking comes from a sustainable & ethical source.

We only use Beech hardwood fibres as, in our opinion, Beech gives our product the best aesthetic and physical properties possible.

ecodek® is not only made from sustainable wood fibres (that would otherwise be used as biomass), but is also fully recyclable, we turn 100% of returned materials back into new composite products.

ecodek® is supplied through a Chain of Custody process which is the unbroken path between the “forest gate” and the end user, including all stages of processing, manufacture, storage, sales and distribution.

By having FSC® and PEFC™ certification it enables us to say:

“This product has been made with timber from well-managed forests and we can prove it.”

ecodek® is currently available as PEFC™ certified, although it can also be supplied as FSC® controlled wood to clients who are pursuing FSC® Project Certification or are themselves FSC® certified.

In general FSC® is the more widely recognized timber standard in the UK, however in the rest of Europe PEFC™ is the more popular. The standards differ slightly so you need to be sure which one you need (the product is no different, it's just the way that our internal production information is gathered & reported that differs).

You can request ecodek® as either FSC® controlled wood or PEFC™ but you must meet the following criteria:
FSC® – Forest Stewardship Council® is an independent organisation that promotes the responsible management of the World's forests.

The FSC® label provides a credible link between responsible production and consumption of forest products, enabling consumers and businesses to make purchasing decisions that benefit people and the environment as well as providing on-going business value. In order to procure ecodek® FSC® (Controlled Wood) you must either:

- 1) Be a company with an up-to-date FSC® Chain of Custody certificate, we check your company details against the FSC® register when you order.
- 2) Or be taking delivery of ecodek® directly to the construction site & the site must already be a registered FSC® construction project.

PEFC™ – Programme for the Endorsement of Forest Certification® shares some common aims with FSC® in promoting the sustainable management of forests but differs slightly in emphasis and interpretation of forest management criteria.

Anyone can order our products as PEFC™, however it is only necessary to order as PEFC™ if your Company's procurement directive states it as necessary.

The PEFC™ certified hardwood flour used in our boards are a by-product of saw mills and would otherwise potentially be burned or sent to landfill. PEFC™ is the world's largest forest certification organisation. ecodek® can also be supplied as FSC® controlled wood for clients who are pursuing FSC® Project Certification or are themselves FSC® Certified.

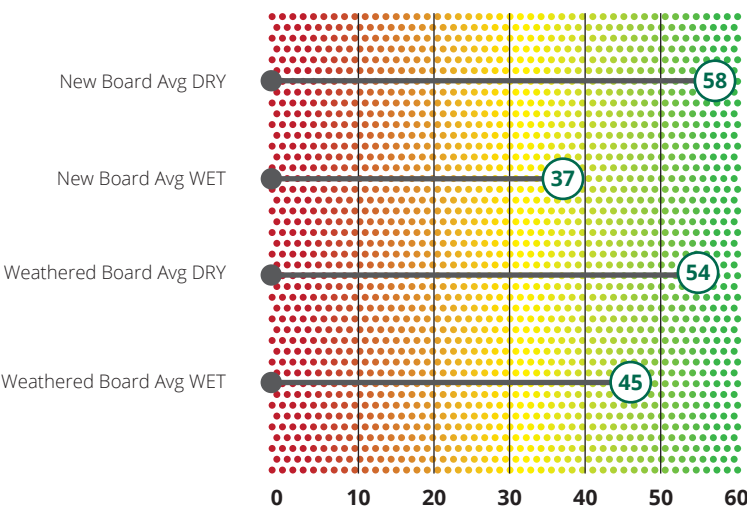


Specification Data: SRV Slip Test Data 4S Rubber (BS 7976-2:2002)

The following slip test results for ecodek®, wood/polymer composite deck boards are as tested in Sep 2010 to BS7976-2: 2002. These tests have been done on clean boards. In order to maintain traction levels similar to these shown, it is imperative that the deck is designed so as to allow proper drainage and that the deck surface is kept as clean as possible.

For more information on slip testing, please go to: www.hse.gov.uk/pubns/web/slips01.pdf

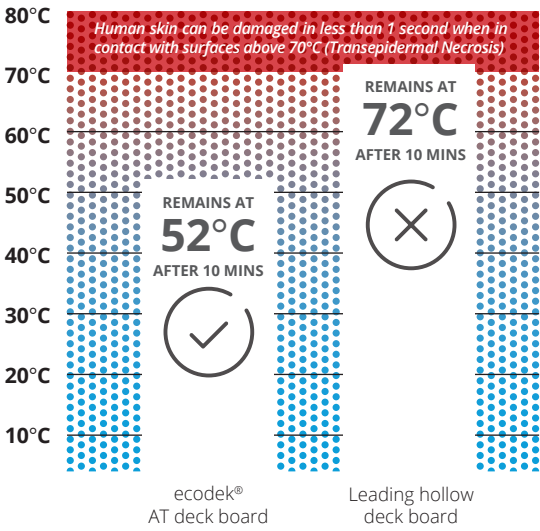
Pendulum Test Value (4S Rubber)



Slip Potential	PTV
High	0 - 24
Moderate	25 - 35
Low	36 - 60

The grooved surface offers improved slip resistance over the ribbed surface. Although both sides of the board are classified as low potential for slip. The above results were achieved by an independent testing facility and are from samples picked at random. Because of the variable nature of the natural and recycled materials used in the manufacture of ecodek®, slip resistance results may vary slightly from batch to batch. When using ecodek® on a ramp or incline, we strongly recommend the use of anti-slip inserts as the potential for slip increases proportionally with angle of incline.

Heat Absorption



The sun has the potential to heat surfaces that we may want to walk or lie on to dangerously high temperatures i.e. over 70°C.

Some deck surfaces can rapidly become so hot that skin damage can take place, especially where children are concerned.

Unlike hollow and other composite decking, ecodek® boards do not reach such high temperatures, which is illustrated by the results of a heat retention test carried out under ASTM D4803 procedures.

Specification Data: Load Span Tables for ecodek® AT & ecodek® HD

Tested for Load Span

All ecodek® decking products have been load tested in accordance with 'BS EN 1195:1998 (Performance of structural floor decking).

Table 1. ecodek® AT and ecodek® HD point loads tested at different spans.

Table 1 shows point loads against spans to ensure you can choose the right product (either ecodek® AT or ecodek® HD) for your project and also the correct bearer spacing to ensure you comply with 'BS EN 1991-1-1:2002 Actions on structures - Imposed loads for buildings'.

	ecodek® AT				ecodek® HD			
SPAN (mm)	300	350	405	455	405	455	500	600
Max point load (kN)	3.5	2.8	2.4	2.0	4.5	3.6	3.0	2.4

Table 2. Point loads requirements for different flooring media (BS EN 1991-1-1:2002).

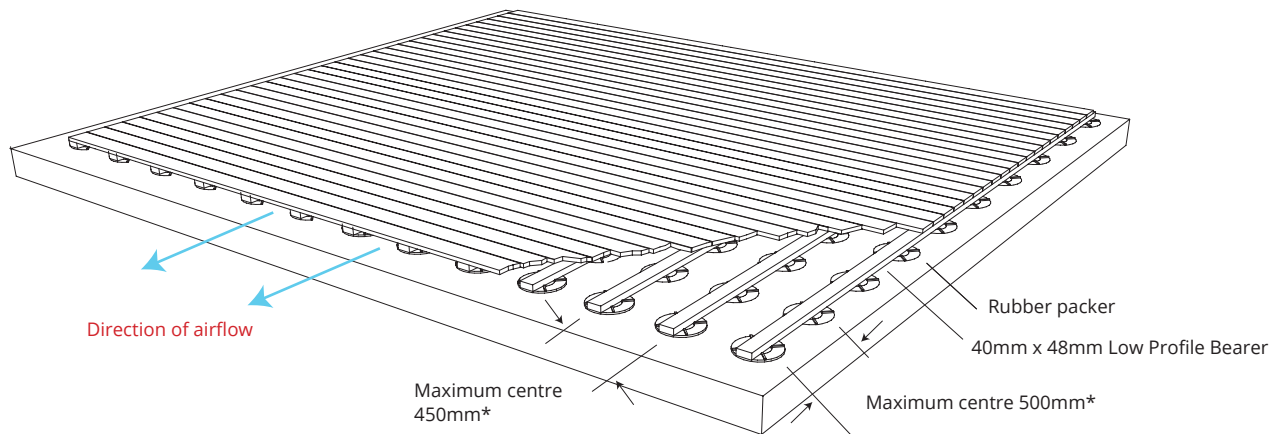
Table 2 below shows an extract from BS EN 1991 that demonstrates what point loads the flooring media should be able to support. These loads are mid-span live loads. Dead loads should be supported in a different manner whereby the load is spread over the support beams to ensure long term board deflection is prevented. If in doubt, please contact our technical department for further information.

BS EN 1991-1-1:2002 Actions on structures - Imposed loads for buildings	Point Load kN (mid-span)
Balconies	2.0
Walkways – Light duty	2.0
General residential	2.0
Offices for general use	2.7
Public, institutional and communal dining rooms and lounges, cafes and restaurants	3.0
Classrooms	3.0
Assembly areas with fixed seating	3.6
Walkways – General duty	3.6
Assembly areas without seating, concert halls and bars	3.6
Shopping areas – General	3.6
Stairs & landings in all buildings incl. hotels & institutional buildings subject to crowds	4.0
Corridors, hallways, aisles, in all buildings incl. hotels & institutional buildings subject to crowds or wheeled vehicles incl. trolleys	4.5
Walkways heavy duty (high density pedestrian traffic including escape routes)	4.5
Stages in public assembly areas	4.5

It is also important to ensure you design your substructure to comply with the uniformly distributed load (UDL) values (commonly expressed in kN/m²), which are also expressed in BS EN 1991.

Application Note: Installing on a Flat Roof

Please read the Full Installation Instructions in conjunction with the following information



*When working at AT boards and Low Profile Bearer

When installing ecodek® on a flat roof, there are a few important points to consider:

1. Rubber packers (or similar) should be used to hold the bearers off the roof surface – this is to allow sufficient water drainage.
2. There are two different profiles of support beams available, 40x48mm and 38x88mm. If using the 40x48mm support beams, they can be laid either 40mm high or 48mm high, to suit your application. If using 38x88mm support beams, they can be laid either 38mm high or 88mm* high, to suit your application.* (If using 88mm high, then at least 3 stringers are required per bearer length.)
3. It is not advisable to use a profile thinner than 38mm as there will not then be enough depth in which to put the short (53mm) composite deck screws (do not use any other type of screw without consulting with ecodek® first).
4. Rubber packers should be placed every 500mm maximum when using the either orientation of the 40x48mm or 38x88mm support beam flat (i.e. the weaker plane) and 1m maximum when using it in its upright position (i.e. the stronger plane).
5. The bearers should run in the direction that will allow most airflow under the decking .
6. Do not allow the screws to pierce the roofing felt as this may cause future water ingress. Deckboards should be placed with a minimum gap of 5mm in-between boards and the same at butt joints (as per technical data).
7. Always pre-drill to 100% of screw depth with a 3.5mm or 4mm bit when screwing composite to composite.
8. Never clad the sides of the deck as it is important to maintain good airflow through the substructure.
9. If you have a recessed flat roof where airflow is limited, or if you need to work outside our specification for any other reason, then please speak to our technical department first.

Application Note: Step Construction Guide 1

The following instructions are a guide only, please work in conjunction with Building Regulations (specifically, Part K) if you need to do so. You may also need to add balustrade, consult with Building Regulations or local planning officer for guidance.

Timber Framed Steps

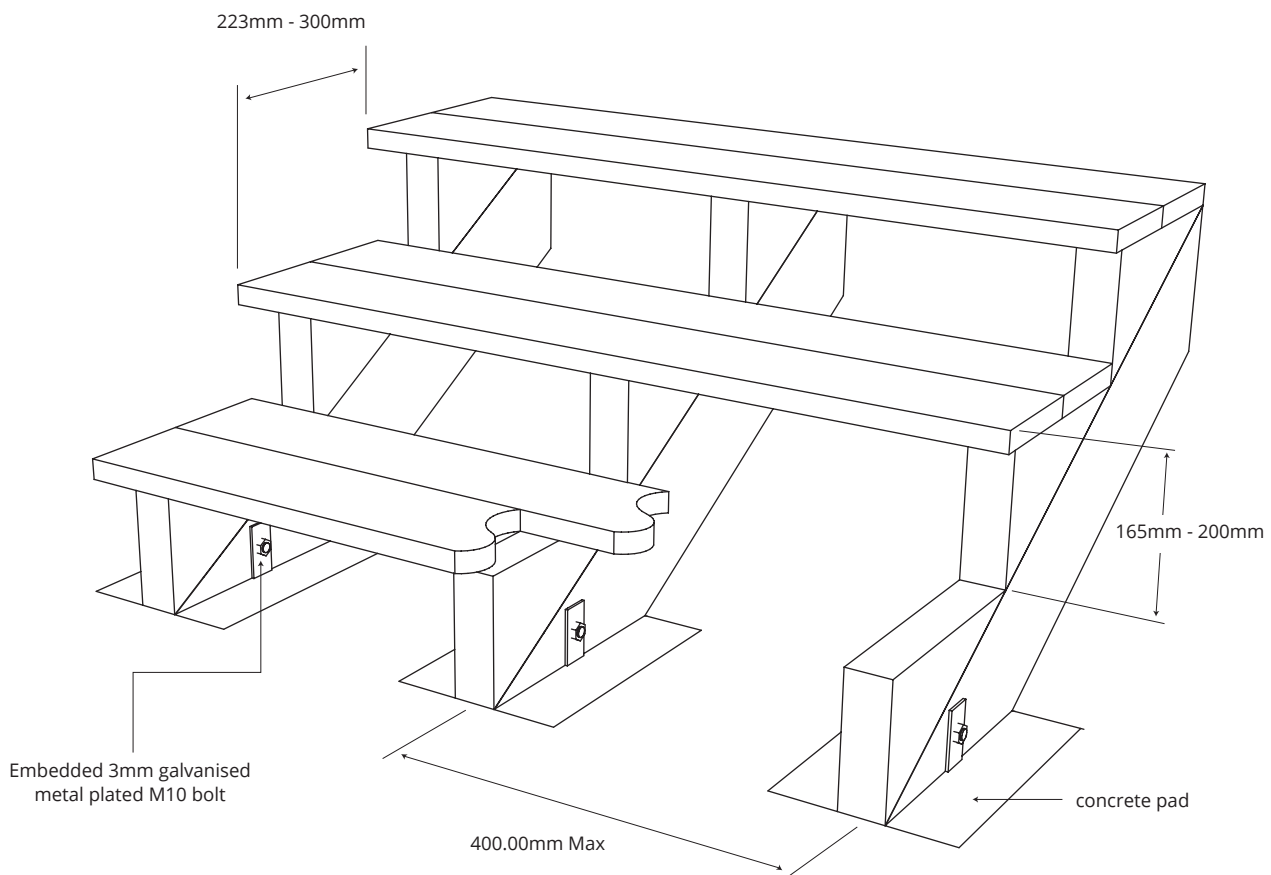
How to construct using pre-fabricated stringers.

You can use ecodek® deck boards 2-up to make the step surface (also known as the 'going').

If you butt the boards together, then you will achieve a total 'going' of 276mm (total 'going' allowed is 223mm – 300mm).

The 'nosing' or overhanging front lip of the step must be at least 16mm. The difference in height between 2 consecutive steps (also known as the 'rise') must be between 165mm and 200mm in this situation.

Ensure bearer spacing is 400mm max, 2 screws per board, per bearer. Step sub-frame should be securely anchored to the ground, preferably on concrete pads.



Application Note: Covering Concrete Steps

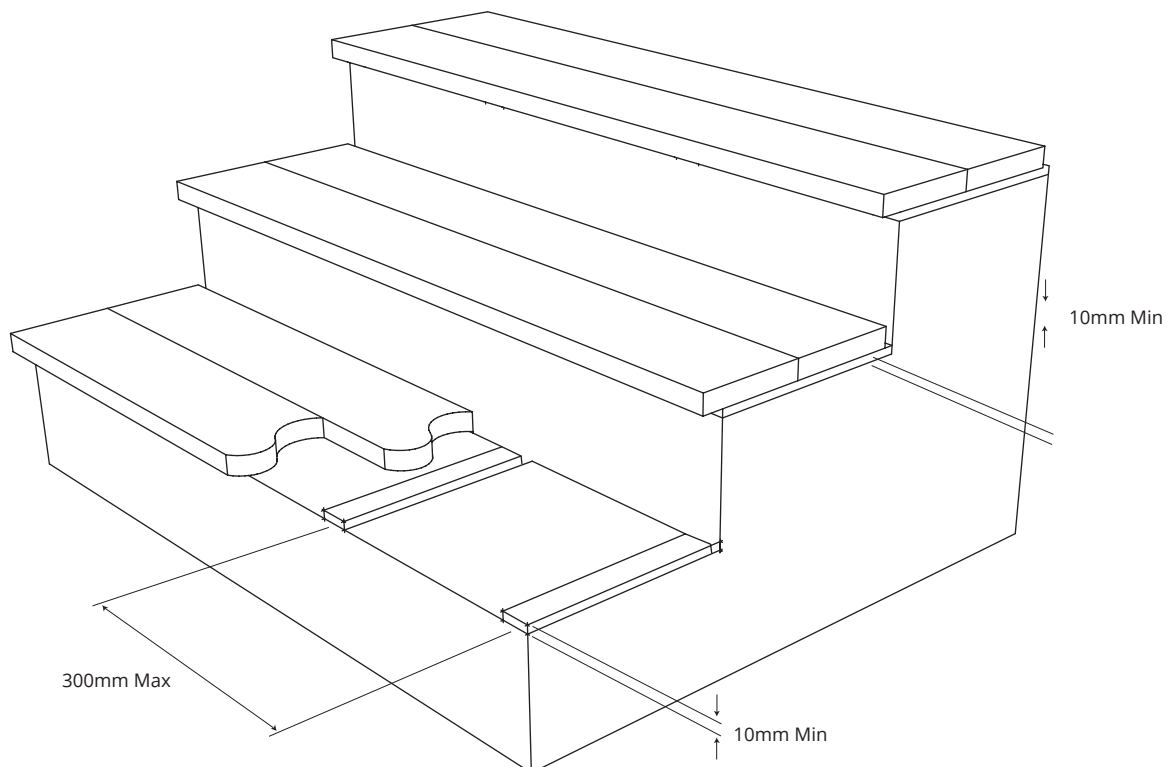
When covering concrete steps with ecodek®, it is imperative to leave at least a 10mm drainage cavity under the deck boards and where the inside edge of the deck board meets the riser. you wish to clad the risers also, then you will need to lift that 10mm off the surface as well. This is to ensure that water has a free and easy route down the back of the ecodek® steps (and rise covers if fitted).

In this example, we have used a nominal 10mm x 40mm insert strip as a packer between the concrete and ecodek®, you could use a waterproof media such as plastic or stiff rubber. In this situation, you cannot use composite deck screws and must instead use a concrete approved screw such as 'Tapcon®'. 'going' of 276mm (total 'going' allowed is 223mm – 300mm).

The 'nosing' or overhanging front lip of the step must be at least 16mm. The difference in height between 2 consecutive steps (also known as the 'rise') must be between 165mm and 200mm in this situation.

The concrete screw must go through the decking, packer and into the concrete holding the whole assembly in compression. 2 screws per deck board, per packer. You may have to check whether your steps comply with Building Regulations.

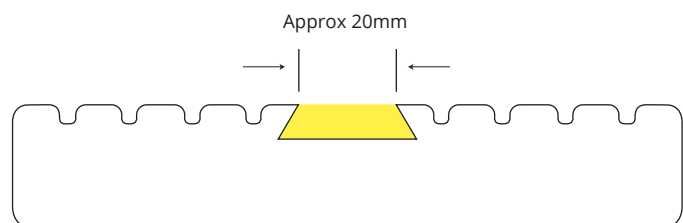
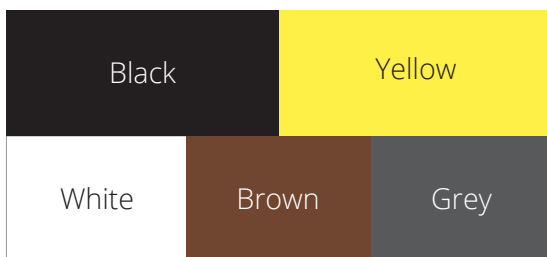
For gapping details please refer to full Installation Instructions at www.ecodek.co.uk. Please ensure bearer spacing is 400mm max, 2 screws per board, per bearer. Step sub-frame should be securely anchored to the ground, preferably on concrete pads.



Application Note: Anti-Slip Inserts

ecodek® has excellent slip resistance which is significantly reduced when being used on an incline. For this reason it is imperative that anti-slip tread inserts are used when constructing a ramp from ecodek®.

ecodek® can supply lengths of board with a centrally fitted anti-slip insert in colours as below:



It is available in lengths from 1.5m to 3.6m maximum to a tolerance of -0mm +25mm.
Delivery is normally 4 to 5 weeks after order placement.

When constructing a ramp, the following points should be considered:

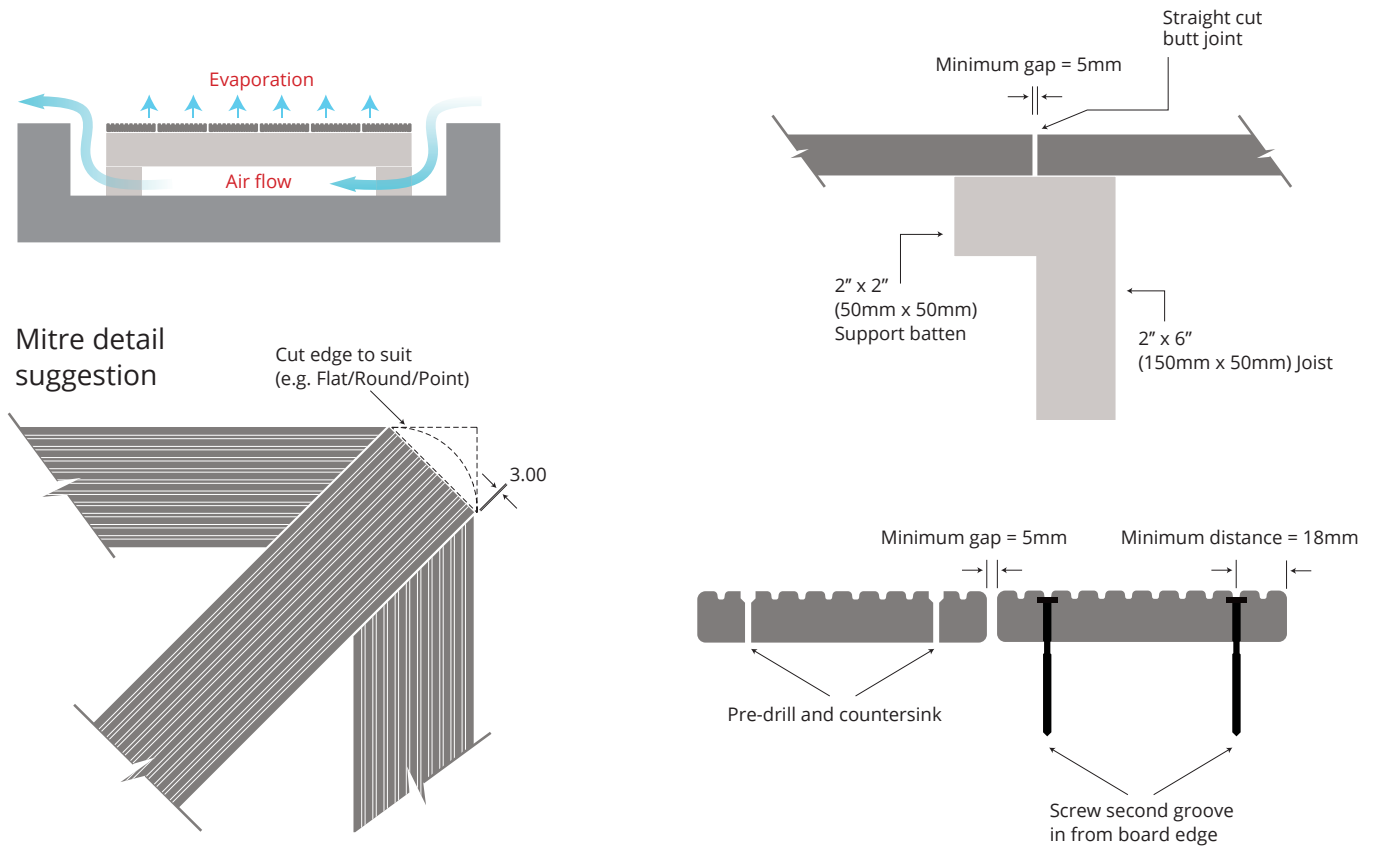
- Adhere to our standard construction guidelines ('Technical Data' and 'Quick Installation Guide' - these PDFs are available from our website).
- It is usual to construct the substructure with a structural grade, pressure treated timber.
- Always run the ecodek® boards horizontally rather than vertically – this is to ensure that there is always an anti-slip tread under a user's foot at any time, it also maximises the slip resistance of the grooves in the board.
- Adhere to Building Regulations, specifically those in Part M which refers to 'Access to and use of buildings'. (See limits for ramp gradients taken from 'Part M' below in Table 1.)
- It is advisable to select a contrasting colour for the anti-slip insert as this will allow pedestrians to easily identify them. Yellow is normally a suitable colour for anti-slip inserts.
- In order to cut the boards, you will need a diamond circular saw blade as the carbide insert is very hard, advise wetting the board before cutting to prolong the life of the blade.

Limits for ramp gradients

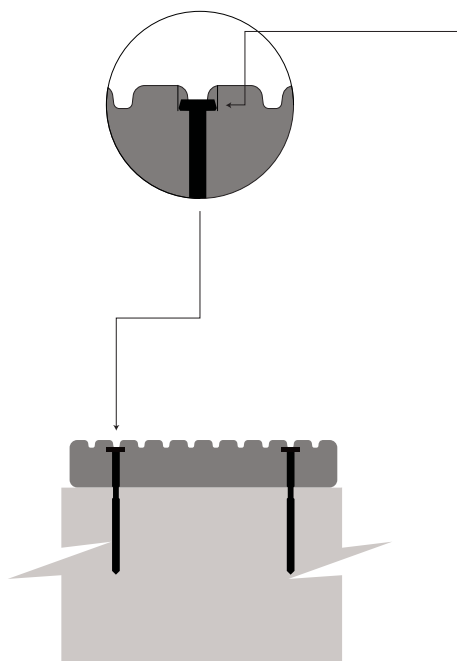
Going of a flight	Maximum gradient	Maximum rise
10m	1:20	500mm
5m	1:15	333mm
2m	1:12	166mm

Note: For goings between 2m and 10m, it is acceptable to interpolate between the maximum gradients, ie.1:14 for a 4m going or 1:19 for a 9m going (See Diagram 3) **Sourced from Building Regulations (Part M)**

ecodek® Installation Instructions - Fixing Detail

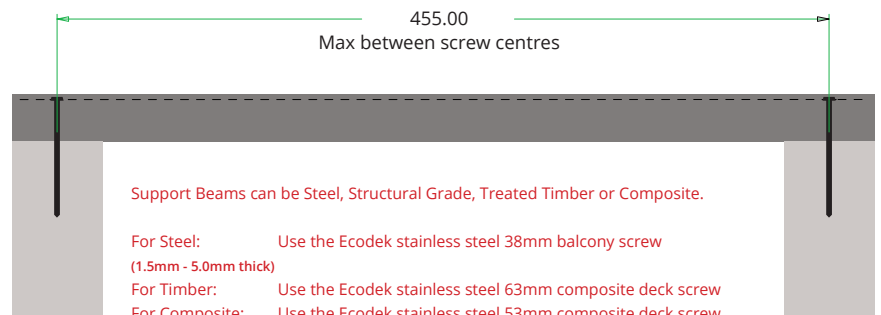


Screw Fitting Instruction



Method of fitment:

- 1- **Timber substructure (63mm Screws):**
Pre-drill deck board with Smart-Bit®.
- Composite substructure (53mm Screws):**
Pre-drill with a 3.5mm dia bit the full depth of the screw
- Steel substructure (38mm Screws):**
Pre-drill with a 3mm dia HSS bit,
Pilot holes to be drilled second groove in from edges of board
- 2- Remove swarf residue (a 2-3mm slice of deck board snapped in half to give a rough edge makes a good swarf removal tool)
- 3 - Preferably use an impact driver as this prevents over-screwing
- 4 - Screw head will not go flush with the bottom of the groove but it must not protrude about the deck surface, see the picture for detail



ECODEK® 'AT' 21MM GROOVED/RIBBED DECK BOARD
STRENGTH CHARACTERISTICS, AND SPAN TABLE CAN BE
FOUND ON OUR WEBSITE

SUPPORT SPACING IS BASED UPON SPECIFIED LOADINGS
FOR RESIDENTIAL DECKS, BALCONIES AND WALKWAYS
AS PER BS EN 1991-1-1:2002
'ACTIONS ON STRUCTURES - IMPOSED LOAD FOR BUILDINGS'

ecodek® Installation Instructions

These instructions are designed as a quick & simple guide to using ecodek®, please ensure that you have also read & understood the Technical Data in full before commencing any construction projects.

Substructure:

Normally C16 or C24 grade 6" x 2" treated softwood.

Maximum Joist Spacing (centre to centre):

Residential use: Must not exceed 455mm (330mm if at 45° angle).

Airflow Requirements:

Always allow for adequate ventilation under the deck, use larger gaps and air vents if the deck is to be sunken or enclosed (contact us for more detail).

Board Spacing:

Minimum 5mm (increase this to 10mm for hot, humid, damp or poorly ventilated areas).

Butt Joint Gaps:

5mm in between boards and where a board meets a wall. If area is often hot, humid, damp or poorly ventilated, a 10mm gap to the wall must be left.

Fixing Method:

Only use ecodek® approved stainless steel composite deck screws. Screw holes must be countersunk with a Smart-Bit® (available from Ecodek).

Fit decking over at least 3 joists with 2 screws at every joist point and decking must be screwed down 20-40mm in from the cut end of the board.

Drill & Countersink:

Ecodek can supply a Smart-Bit® that will pre-drill & countersink in one quick operation, designed specifically for composite decking.

Fascia Boards:

When attaching fascia boards to the side of a deck, it is important to make sure they are screwed down every 200mm (with 2 screws) along their length. Please allow the same spacing between fascia boards as for decking boards - both for board spacing and butt joint gaps.

Using ecodek® Heavy Duty Posts:

If you intend to use the ecodek® Heavy Duty Post at any length over 1.4m, then you must use a 2" scaffold pole down the centre to reinforce it (pole must come up to within 500mm of the top of the post).

ecodek® Post Caps:

These are designed to be a push fit but the legs can be trimmed to suit if necessary.

DO NOT:

- Lay the boards directly onto a non self-draining surface without consulting with our technical department first.
- Use hidden fixings or clips.
- Butt boards up end to end closer than the specified amount.

For technical data, please visit our website www.ecodek.co.uk

Aftercare: Care & Maintenance

ecodek® is inherently a very low maintenance product.

To keep your ecodek® in tip top condition we advise you use our recommended (WPC) Wood Polymer Deck cleaner at least twice a year (More in heavy use areas or areas subjected to high levels of contamination).

Make up the cleaning solution as directed on the bottle and apply to the surface of the deck using a soft mop (or very soft nylon bristle brush) and gently work into the surface. Allow the solution to sit for 15 – 20 minutes.

Go over the surface again with any remaining solution and immediately rinse off the solution using a garden hosepipe ensuring all the solution is removed. Do not be tempted to use a jet wash. Using our recommended WPC cleaner and a common garden hose is more than enough to clean and restore your ecodek® and you may risk damaging the deck surface due to the high pressure some jet wash machines can produce.

If you discover any difficult to remove stains, please contact our technical department for advice on how best to remove it. Please do not use a jet-wash or harsh chemicals as they may cause damage to the surface. If you see dark spots on the surface of the deck, it may be the start of a mould/fungal infection. It is very important you apply an anti-fungal solution to the surface immediately to prevent any infection spreading. Anti-fungal deck/patio washes are readily available from any DIY store; however we do recommend Simply Gone (See website for details) as this has been proven to be very effective in eradicating localised surface mould, fungal and algae growth. Once applied, allow at least 6 – 8 weeks to see results (don't be concerned about re-applying if you feel it is needed).

If ecodek® is situated in an area that is prone to algae/mould growth it is recommended you apply Simply Gone to the surface of the deck twice a year. Simply apply using a watering can or pressure spray and leave to dry (It really is that easy). Preferably once in Spring and once in the Autumn. This will ensure any mould/Fungal spores cannot get established on the surface of ecodek®.

While applying, please keep young children and pets away from the area that is being treated. Once the solution has dried the area will be safe to use as normal including after rainfall or washing of the surface.

Simply Gone or any other anti-fungal washes are harmful to aquatic life and must not be allowed to enter ponds and any other water system. Be kind to the environment and store any remaining solution until needed.

ecodek® is an inherently low maintenance product if you follow the above advice and will give you many years of service. If any ecodek® boards become damaged from heavy impact it will need to be replaced with a spare. If a board should become scratched, gouged, chipped please contact the Quality Department direct on 01978 667 840 or customercare@ecodek.co.uk for advice on how best to repair the damage.

If you have any questions or concerns regarding ecodek®, please contact us direct and we will be more than happy to discuss them with you.

For full care and maintenance instructions, please visit our website www.ecodek.co.uk

Product Codes

Code	Description	Colour	Size
WFASCIA-3.6m-19x136-LB	3.6M Wide Fascia Board 19X136mm Light Brown	Light Brown	19 x 136mm
WFASCIA-3.6m-19x136-DB	3.6M Wide Fascia Board 19X136mm Dark Brown	Dark Brown	19 x 136mm
WFASCIA-3.6m-19x136-PG	3.6M Wide Fascia Board 19X136mm Pebble Grey	Pebble Grey	19 x 136mm
WFASCIA-3.6m-19x136-SG	3.6M Wide Fascia Board 19X136mm Slate Grey	Slate Grey	19 x 136mm
WFASCIA-3.6m-19x136-BL	3.6M Wide Fascia Board 19X136mm Black	Black	19 x 136mm
SSTIFF4.8m-88x38-BL	Superstiff Support Beam	Black	88 x 38mm
SSTIFF4.8m-88x38-DB	Superstiff Support Beam	Dark Brown	88 x 38mm
SSTIFF4.8m-88x38-LB	Superstiff Support Beam	Light Brown	88 x 38mm
SSTIFF4.8m-88x38-PG	Superstiff Support Beam	Pebble Grey	88 x 38mm
SSTIFF4.8m-88x38-SG	Superstiff Support Beam	Slate Grey	88 x 38mm
SSTIFF3.6m-88x38-BL	Superstiff Support Beam	Black	88 x 38mm
SSTIFF3.6m-88x38-DB	Superstiff Support Beam	Dark Brown	88 x 38mm
SSTIFF3.6m-88x38-LB	Superstiff Support Beam	Light Brown	88 x 38mm
SSTIFF3.6m-88x38-PG	Superstiff Support Beam	Pebble Grey	88 x 38mm
SSTIFF3.6m-88x38-SG	Superstiff Support Beam	Slate Grey	88 x 38mm
BEARER-3.6m-40x48-BL	3.6m BEARER 40X48mm BLACK	Black	40 x 48mm
BEARER-4.8m-40x48-BL	4.8m BEARER 40X48mm BLACK	Black	40 x 48mm
HDPOST1.83m85x85-BL	Heavy Duty Post	Black	88 x 88mm
HDPOST1.83m85x85-DB	Heavy Duty Post	Dark Brown	88 x 88mm
HDPOST1.83m85x85-LB	Heavy Duty Post	Light Brown	88 x 88mm
HDPOST1.83m85x85-PG	Heavy Duty Post	Pebble Grey	88 x 88mm
HDPOST1.83m85x85-SG	Heavy Duty Post	Slate Grey	88 x 88mm
HDPOST2.44Mm85x85-BL	Heavy Duty Post	Black	88 x 88mm
HDPOST2.44Mm85x85-DB	Heavy Duty Post	Dark Brown	88 x 88mm
HDPOST2.44Mm85x85-LB	Heavy Duty Post	Light Brown	88 x 88mm
HDPOST2.44Mm85x85-PG	Heavy Duty Post	Pebble Grey	88 x 88mm
HDPOST2.44Mm85x85-SG	Heavy Duty Post	Slate Grey	88 x 88mm
OPDECK25x136-LB	Ecodek Olympic Profile Decking Board	Light Brown	25 x 136mm
OPDECK25x136-DB	Ecodek Olympic Profile Decking Board	Dark Brown	25 x 136mm
OPDECK25x136-PG	Ecodek Olympic Profile Decking Board	Pebble Grey	25 x 136mm
OPDECK25x136-SG	Ecodek Olympic Profile Decking Board	Slate Grey	25 x 136mm
OPDECK25x136-BL	Ecodek Olympic Profile Decking Board	Black	25 x 136mm
GR21DECK21x136-BL	Ecodek GR at Rev Decking Board	Black	21 x 136mm
GR21DECK21x136-LB	Ecodek GR at Rev Decking Board	Light Brown	21 x 136mm
GR21DECK21x136-DB	Ecodek GR at Rev Decking Board	Dark Brown	21 x 136mm
GR21DECK21x136-PG	Ecodek GR at Rev Decking Board	Pebble Grey	21 x 136mm
GR21DECK21x136-SG	Ecodek GR at Rev Decking Board	Slate Grey	21 x 136mm
GR25HDDECK25x136-PG	Ecodek GR HD Rev Decking Board	Pebble Grey	25 x 136mm
GR25HDDECK25x136-LB	Ecodek GR HD Rev Decking Board	Light Brown	25 x 136mm
GR25HDDECK25x136-SG	Ecodek GR HD Rev Decking Board	Slate Grey	25 x 136mm
GR25HDDECK25x136-DB	Ecodek GR HD Rev Decking Board	Dark Brown	25 x 136mm
GR25HDDECK25x136-BL	Ecodek GR HD Rev Decking Board	Black	25 x 136mm
GR25HDDECK25x136-TBC	Ecodek GR HD Rev Decking Board	TBC	25 x 136mm

Code	Description	Colour	Size
SS63MMSCREW-PG	Stainless Steel Screw Box of 200	Pebble Grey	63mm
SS63MMSCREW-SG	Stainless Steel Screw Box of 200	Slate Grey	63mm
SS63MMSCREW-LB	Stainless Steel Screw Box of 200	Light Brown	63mm
SS63MMSCREW-DB	Stainless Steel Screw Box of 200	Dark Brown	63mm
SS63MMSCREW-BL	Stainless Steel Screw Box of 200	Black	63mm
SS53MMSCREW-PG	Stainless Steel Screw Box of 200	Pebble Grey	53mm
SS53MMSCREW-SG	Stainless Steel Screw Box of 200	Slate Grey	53mm
SS53MMSCREW-LB	Stainless Steel Screw Box of 200	Light Brown	53mm
SS53MMSCREW-DB	Stainless Steel Screw Box of 200	Dark Brown	53mm
SS53MMSCREW-BL	Stainless Steel Screw Box of 200	Black	53mm
SSBALCONY38MMSCREW-BL	Stainless Steel Screw Box of 200	Black	38mm
SSBALCONY38MMSCREW-LB	Stainless Steel Screw Box of 200	Light Brown	38mm
SSBALCONY38MMSCREW-DB	Stainless Steel Screw Box of 200	Dark Brown	38mm
SSBALCONY38MMSCREW-SG	Stainless Steel Screw Box of 200	Slate Grey	38mm
SSBALCONY38MMSCREW-PG	Stainless Steel Screw Box of 200	Pebble Grey	38mm
SBIT08	No.8 Smart-Bit®	-	-
SBIT08DBITSPK5	No.8 Smart-Bit® Drill Bits Pack of 5	-	-
HDPOSTCAP-LB	Ecodek Heavy Duty Post Cap	Light Brown	-
HDPOSTCAP-DB	Ecodek Heavy Duty Post Cap	Dark Brown	-
HDPOSTCAP-PG	Ecodek Heavy Duty Post Cap	Pebble Grey	-
HDPOSTCAP-SG	Ecodek Heavy Duty Post Cap	Slate Grey	-
HDPOSTCAP-BL	Ecodek Heavy Duty Post Cap	Black	-

Accreditation and Certification

ecodek® continually strive to improve our processes and practices in producing our top quality decking boards. We recognise that being assessed by an accredited organisation is important. As part of our management process, we actively

pursue professional certification and accreditation for our products and supply chain partners. Below are some of our certification and accredited memberships.



FAQ

What does ecodek® alternative decking look like?

ecodek® has an appearance that is very similar to wood with a ribbed or reversible grooved detail. ecodek® is an alternative to wood, and is available in a wide colour palette.

What is ecodek® made from?

ecodek® is a wood polymer composite, which means that it's a blend of recycled wood and recycled plastic. The composition of ecodek® is approximately 55% hardwood fibres (re-claimed beech from saw mills, i.e. top quality, kiln dried material) and 45% high-density polyethylene otherwise known as recycled plastic milk bottles! Other ingredients are a high-quality colour pigmentation system, a wetting/bonding agent and a high-tech ultraviolet light inhibitor package.

Can you screw it like you can with wood?

ecodek® has developed a range of screws specifically designed for installing our boards. Available in three ranges, all screws are colour coded to correspond with the colour of the board for seamless aesthetics.

Do you need specialist wood working tools?

No specialist woodworking equipment is needed, you can even saw it by hand. Generally a standard chop saw with a multi-purpose Tungsten Carbide Tip would be preferred by installers.

Will ecodek® fade over time?

ecodek® is made from hardwood fibres in order to minimise natural UV fading. There will still be some fade visible over the first few months giving a more textured appearance and this is a standard process called weathering. Any initial colour difference between boards is due to the natural colour variance in the wood fibres and once weathered, the boards will all be a similar colour tone. The most fade resistant colours are Slate Grey, Dark Brown and Black.

Can you use ecodek® for load bearing application ?

Despite having a high load bearing structural ability, it is not recommended to use ecodek® in structural applications. We would recommend consulting a structural engineer to design any load bearing structures.

Can you paint or stain ecodek®?

ecodek® is a low maintenance product and does not require painting to protect the deck from the natural elements. Although our boards will adhere to oil based or epoxy based paints and stains we would advise against altering the natural beauty of the board.

Can other non-standard board lengths be purchased?

Our standard board lengths are 3.6m, but ecodek® can be specified to any length and 1.5 metre to 6 metre lengths are available for no extra charge. For custom projects our manufacturing facility can cater for up to 9 metre lengths at a small surcharge and also offer other board profiles dependent on your application. Please contact our Sales Team for custom boards.

How do you repair it if it gets damaged?

ecodek® is very tough and robust, and therefore difficult to damage under normal circumstances. If the boards get marked or damaged by garden furniture etc, then the marks can be softened and blended back into the deck by rubbing a walnut over the marks. (Please see our Maintenance Guide for more details.)

What material is recommended for the sub structure?

The lowest cost option is to use treated softwood. The softwood substructure will attract damp and water with ingress over time will rot undetected. We also supply a composite substructure beam and bearer which resists water ingress or damp in areas with low air circulation.

Does it become slippery when wet?

As with the majority of flooring products, ecodek® will lose some slip resistance when wet, but still has one of the highest ratings for "low potential for slip" requirement as set by the HSE. (please see the technical section for information on our test results)

How easy is ecodek® to clean?

After your ecodek® wood composite deck has been constructed, there are likely to be some pencil marks. These can be removed with a normal pencil eraser. After installation, the simplest way to clean your beautiful new deck is to use a hosepipe and a deck cleaning solution periodically or for less stubborn stains, simply use a soft brush or sponge. Do not use a scourer, jet wash or stiff brush as this will leave marks on the deck. (See our full Maintenance Guide for further details.)

Image and photography credits

We would like to thank the following people and organisations for the kind use of their photography.

Cover: Courtesy of Ballymore Group.com

Pg 4: Image © James MacMillan

Pg 16: Image Courtesy of John Brennan Landscapes

Pg 32: School Image © James MacMillan

Pg 35/36: Image © Neil Kenyon @ arki magazine

Pg 37/38: Image © Butlins.com

Pg 39/41: Image Courtesy of John Brennan Landscapes

OUR VALUES

Ecodek is proud to carry the Made in Britain marque and to be the only British manufacturer of wood polymer composite decking right here in the UK that carries a 25-year warranty.

Ecodek is made in Wrexham, Wales with a precision manufacturing processes and high attention to detail to ensure every deck board that is laid on a deck stays there.

Ecodek by its very nature is a champion of sustainability and is committed to excellence across all areas of the business. Key to our success is our company wide sustainability program which we will not compromise on. As a company we strive to promote and engender a culture of sustainability across our suppliers, site management and employees.

While the Ecodek ethos is to continually improve and maintain high levels of standards and credentials, we always look for ways to improve our methodology and best practice. Our goal and target is to work towards a Zero to Landfill waste policy.

With most of our workforce living locally, we encourage biodiversity into our local surroundings and work ethos. As part of this program we currently work with North Wales Wildlife Trust and their Living Landscapes Project.

We encourage wildlife back to the leafy green environs surrounding our factory. We do this through planting wild flowers and improving plant and wildlife habitats. Awarded Silver Member level status, we are proud to be able to increase our support to them which will go towards helping threatened species in the greater Wrexham area.

Additionally, enabling a healthy workforce also means our employee care program includes providing healthy outdoor spaces in which the staff can take their breaks, including picnic tables made from ecodek® sustainable products, again protecting the natural beauty of timber.

Ecodek is an inclusive employer who value the contributions all staff can bring to the business with them. We have worked as a combined team to gain the accreditation of Level 2 'Disability Confident Employer'. We are now working tirelessly towards attaining Level 3.

In addition, we have worked in conjunction with Remploy for several years with great success. Remploy aim to create equality in the workplace and exist to improve the lives of disabled people and those with complex needs through the power of work. Ecodek believe in the ability that the person can bring to the team, disabled or otherwise. Scope is another organisation Ecodek works with the equal aim to support families and improve the equality for disabled people in the workplace.





**MADE IN
BRITAIN**

Uniclass L81215:P511	EPIC Q13:X52
CL/SfB	
(90.41) Hi3	



**Unit 13, Abenbury Way,
Wrexham Industrial Estate, Wrexham
LL13 9UZ**

Ecodek is a trading name of Specialist Building Products Limited,
a wholly owned subsidiary of the Epwin Group.

Specialist Building Products Limited is registered in England & Wales,
Company Registration number: 1268689



Design by Agency 17 - www.agency17.co.uk

