



Bandonet®

Aluminium parapet extension
and facade band system



The System



- ✓ Suitable for all sizes of parapet extension
- ✓ Adapted to roof and facade insulation
- ✓ Protects facade coverings
- ✓ Delivered Made-To-Measure with layout plan
- ✓ Height adjustment built in to the system
- ✓ Proven Eurocode wind resistance

Bandonet® is an aluminium parapet band system. It is used to finish the weatherproofing at the edges of flat roofs and acts as a water drip to protect the facade covering. If needed, it can also extend the parapet height.

Bandonet® covers External Thermal Insulation (ETI) on facades, even when there is a significant overhang.

Functions

Bandonet® is installed whenever the size of traditional edge bands is insufficient, especially when weatherproofing is renewed with external thermal insulation.

It is used either to extend existing parapet height, or as a metal parapet if there is no concrete parapet.

The system also protects the facade covering from drips and dirt thanks to its overhang that deflects water.

It can also be used as a decorative band.

System elements

The system includes:

- automatic fixing supports
- rounded edge bands
- connectors
- corners or special parts that are pre-fabricated in the factory

System service life

The system's service life is guaranteed:

- by aluminium, a material that naturally does not corrode
- by the free expansion of the elements between each other thanks to the automatic fixing supports
- by the fact that the system is separate from the weatherproofing by being fitted to a metal frame supplied by the installing contractor.

System advantages

- Factory Made-To-Measure limiting on site fabrications.
- Ready-to-install delivery with a layout plan. The plan is created using the measurements made on site by the installing contractor.
- The verticality and angle of the band are adjusted using the hinge.

Finishes

- Mill finished aluminium
- Anodised aluminium - dull satin effect
- Danilac powder coating with a choice of RAL colours



Bandonet® is an aluminium facade band system for parapet with or without external thermal insulation (ETI).
Bandonet® can be used to increase the parapet height even if the ETI on the facade has a significant overhang.

Technical validation

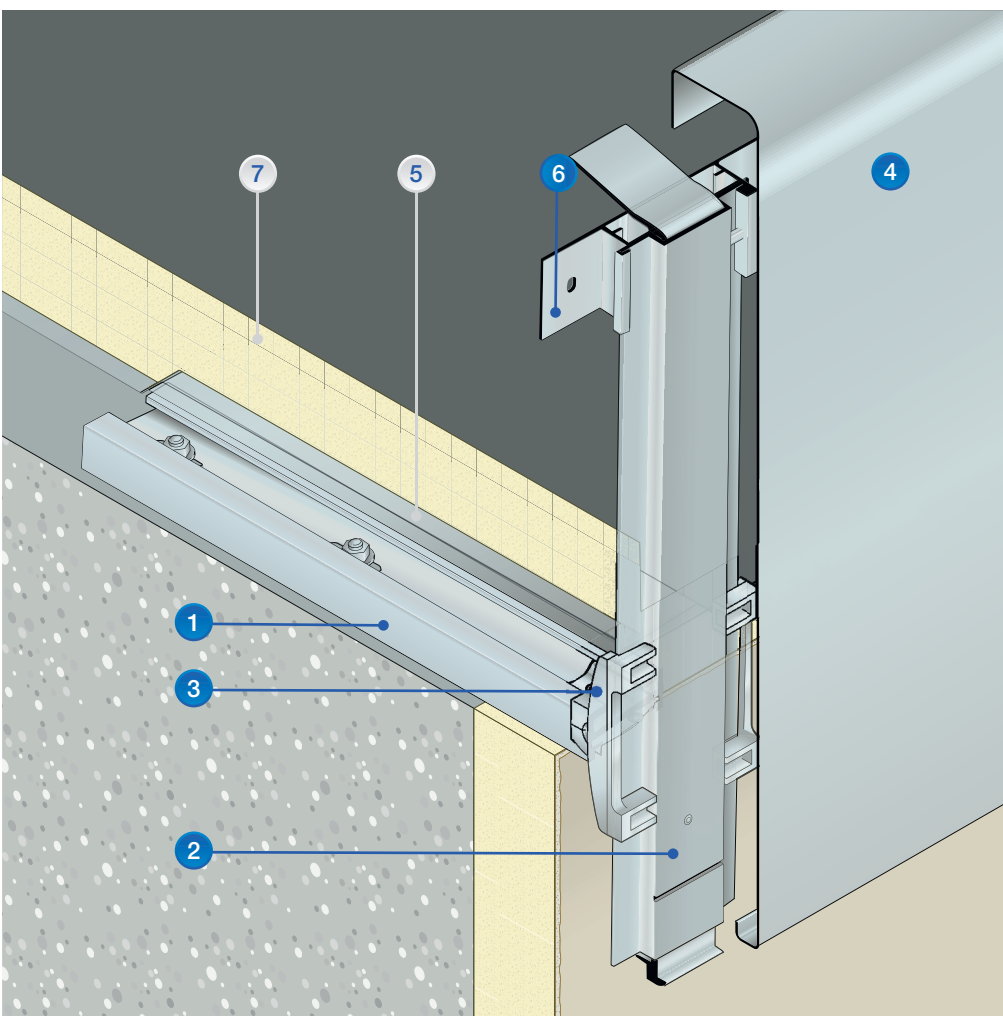
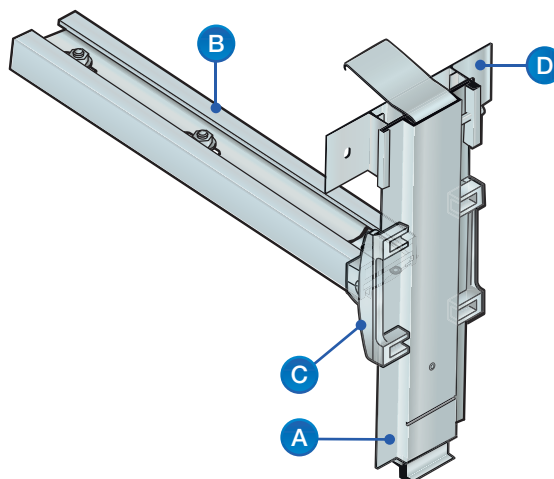
Technical calculations according to EN codes (wind etc.) is supplied on request.

Support description

The support has 4 parts:

- A - An automatic fixing support to hold the Aluminium Profile
- B - An aluminium slide with two drill holes for fixture to the shell.
It allows an offset for a maximum insulation thickness of 250 mm on the facade. For larger sizes, please contact us
- C - A hinge to adjust the verticality of the band
- D - A pre-drilled plate to fix frame

- ✓ Usable with a large offset
- ✓ Adjustable for perfect alignment



Example of use

1. Slide for slab fixture
2. Support with automatic fixing pusher
3. Hinge to adjust the band's verticality
4. Aluminium band
5. Metal frame (not included) for the weatherproofing edge
6. Plate to fix the frame
7. French approved installation procedure

System elements



Simple and easy to install system. It allows the weatherproofing contractor to work in a classic manner, with the edge on a frame (not included).

1- Aluminium band

The maximum length of Bandonet® elements is 3000 mm. Aluminium thickness 15/10 and 20/10. Delivered in natural colour anodised aluminium, or lacquered aluminium.

2- Connector

Strengthened slides for effective connection.

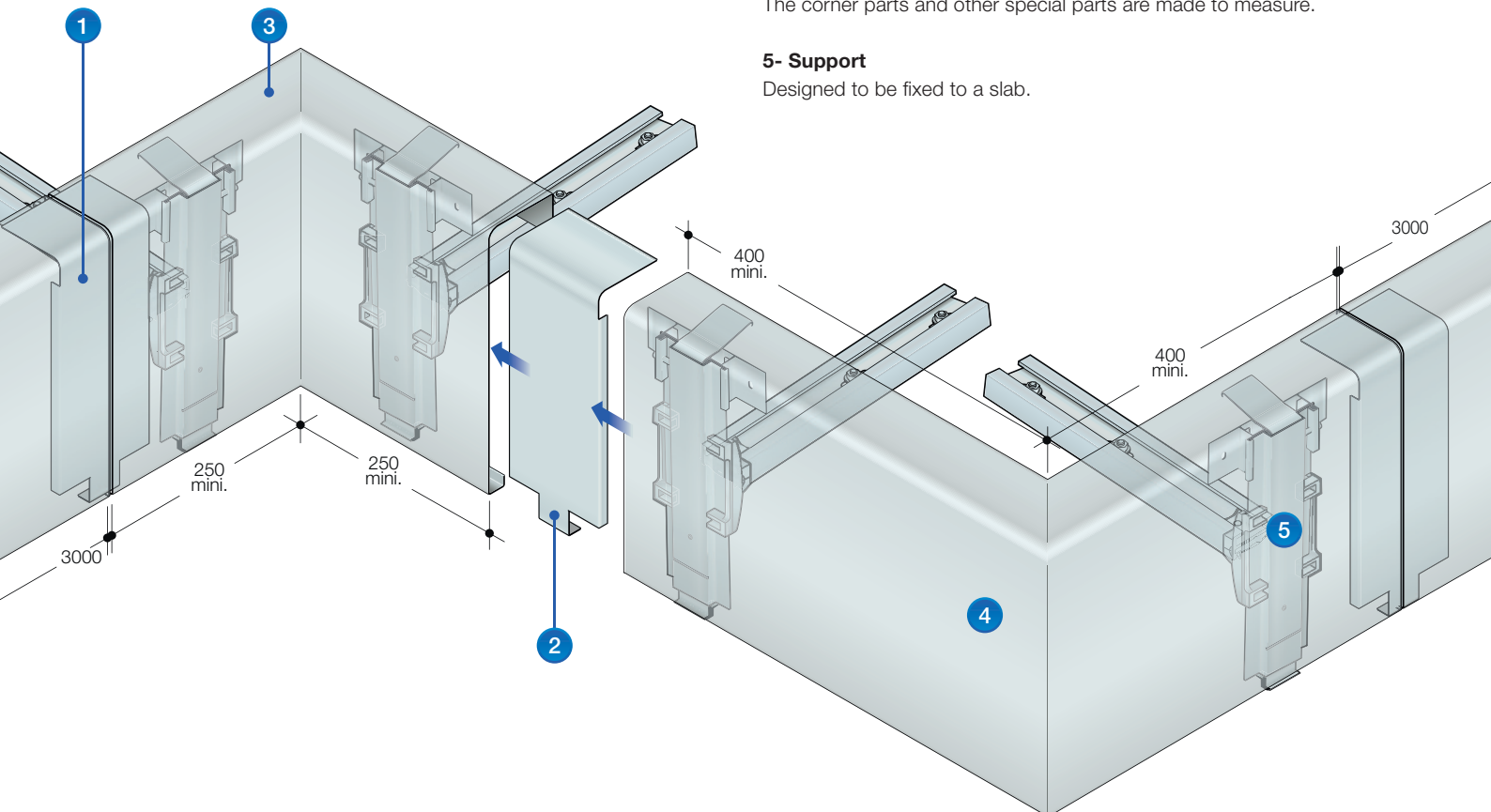
3- Inner corner

4- Outer corner

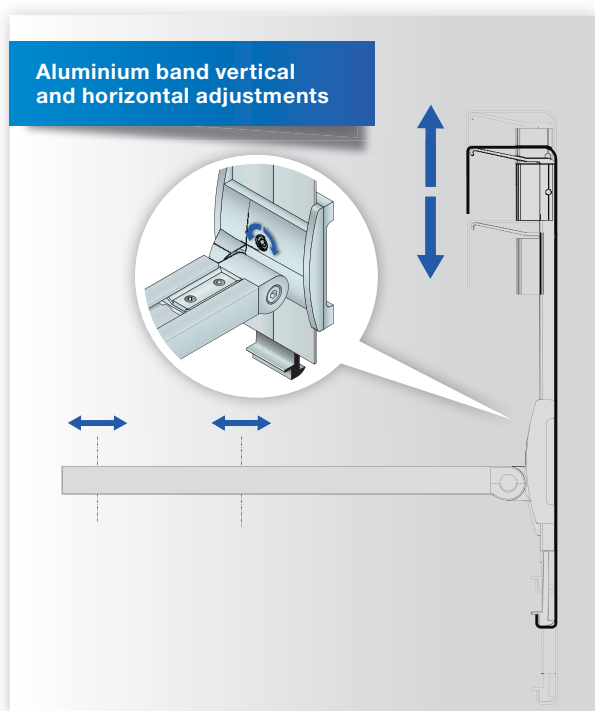
The corner parts and other special parts are made to measure.

5- Support

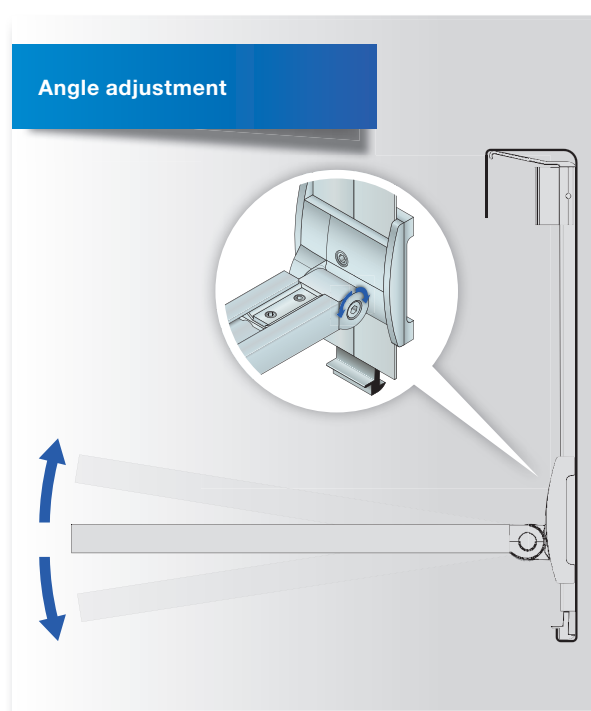
Designed to be fixed to a slab.



The advantages of the hinge

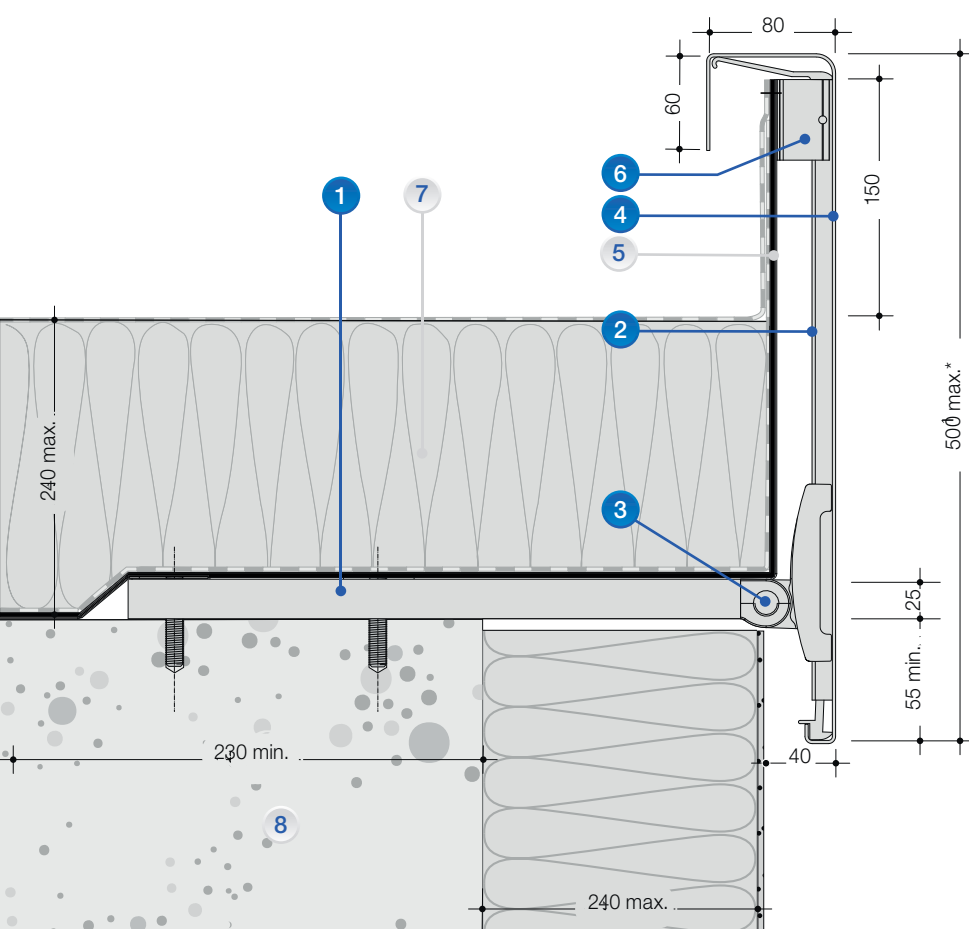


- The slider has 2 oblong 8.5x35mm drill holes which simplify fixing the slider to the slab.
- The hinge is used to adjust the band height before final locking.



The hinge angle adjustment makes it possible to position the band parallel to the facade before final locking.

Example of use



1. Slide for slab fixture
2. Support with automatic fixing pusher
3. Hinge to adjust the band's verticality
4. Aluminium band
5. Metal frame (not included) for the weatherproofing edge
6. Plate to fix the frame
7. French approved installation procedure
8. Shell

* For heights above 500mm, please contact us

Examples of installations



Example of an upstand parapet with reinforced protection (inside view)

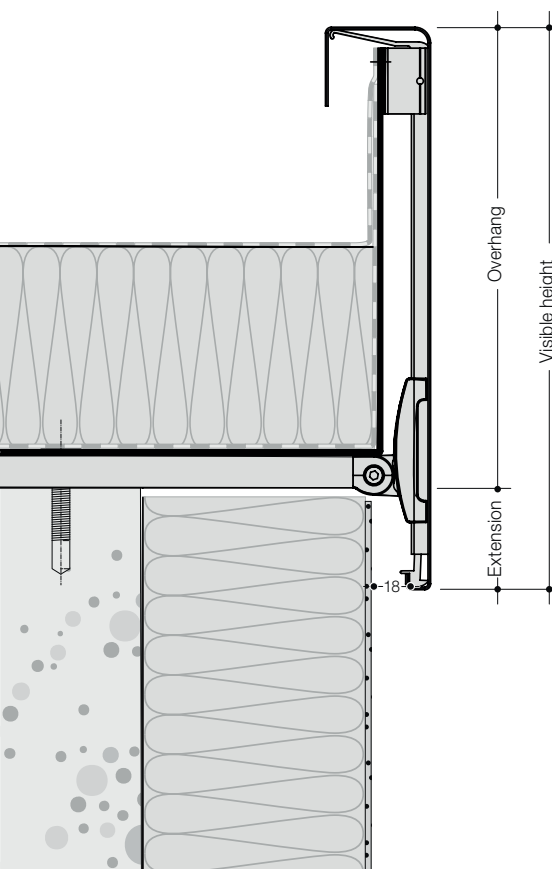


Example of a parapet extension (front view)



Example of a band facing for canopy with overflow

Descriptive text



Aluminium parapet extension system for facades and acroterion with insulation

Bandonet® type aluminium parapet extension from

dani alu (phone: +33 4 78 19 81 41), www.danialu.fr or technically equivalent.

The system allows the connection of the weatherproofing to a separate frame in compliance with the French approved installation procedure 43.1 and allows the band to be placed overlapping the insulation and the facade covering.

The system will include:

- a covering band in 5745 H111 aluminium alloy,

Finish:

(Indicate your choice from amongst the 2 following possibilities)

- **anodised aluminium natural colour**
(Treated aluminium Dull satin finish)
- **Danilac lacquered Ral**
(Danilac label = long chrome-free surface treatment, powder-coating applied using an electrostatic technique and then polymerised in an oven. Indicate the RAL colour n° and description here)

- extruded aluminium automatic fixing supports, allowing the free expansion of the system on the facade and the mechanical fixing of the frame on the roof.

The supports allow the band height and verticality to be adjusted once fixed.

The corners, special parts, connectors and covering sheaths must be pre-fabricated in the factory.

The spacing between the supports and the band thickness will be defined by the manufacturer and proven using a Eurocodes calculation note.

A layout plan will be created by the manufacturer using the measurements taken on the site by the contractor.

Installation will be carried out by the contractor using the layout plan and the manufacturer's installation instructions.

The system will be designed and sized using the following data:

- Thickness of the facade system
(insulation + covering):
- Thickness of the parapet system
(weatherproofing + insulation):
- Parapet width (this part can be used as a fixing support,
excluding insulation and weatherproofing):
- Type of support used to fix the supports:
(indicate: timber, concrete, metal)
- Extension to create above the weatherproofing on the acroterion: 150 mm
(150 = standard, indicate if different)
- Total visible band height:

Download the descriptions on
www.danialu.com

Bandonet®

☐ Purchase ☐ Price request

(Tick the required option)

Please provide the following information.

Company stamp

Date:

Company (address /company stamp):

Contact: Mrs/Mr.

Phone number: Fax:

Mobile phone: Email:

Type of project ☐ new build ☐ refurbishment **Site reference:**

Project phase ☐ design ☐ contract

Delivery address

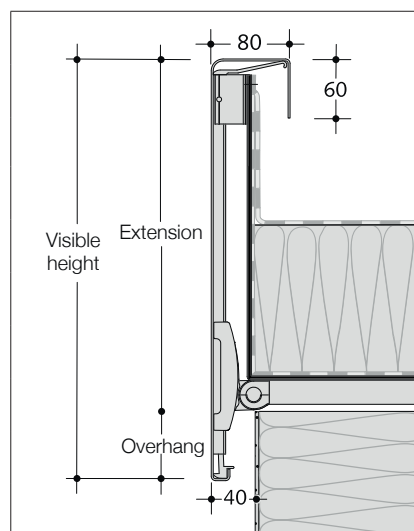
Choice of aluminium thickness:

☐ 15/10 ☐ 20/10

Aluminium finish:

☐ Mill finished aluminium ☐ Natural anodised ☐ Danilac powder coating RAL colours n°:

Dimensions



Number of linear metres:

Number of corners:

Visible height in mm (180 mm min.)

Extension in mm:

Overhang in mm:

In the case of a sloping parapet, indicate the angle in degrees:

Parapet width:

Thickness of the facade system in mm (250 mm max.):

Special cases:

dani alu France

Phone: +33 4 78 19 81 41
export@danialu.fr
www.danialu.fr

dani alu Germany

Phone: +49 6021 453 020
post@danialu.de
www.danialu.de

dani alu United Kingdom

Phone: +44 1865 59160
contact@danialu.co.uk
www.danialu.co.uk

dani alu Sweden

Phone: +46 72 555 08 09
info@danialu.se
www.danialu.se