

GRAPHENSTONE

THE ORIGINAL & AUTHENTIC

A close-up photograph of green palm fronds, showing the intricate texture and vibrant color of the leaves. The fronds are arranged in a diagonal pattern, creating a sense of depth and movement.

**THE MOST ADVANCED SOLUTION IN
ECOLOGICAL PAINTS & COATINGS
WITH GRAPHENE TECHNOLOGY**

2019 CATALOGUE

www.graphenstone.com

Content

Graphenstone

- 4 COMPANY
- 6 LIME BASE
- 8 GRAPHENE
- 10 PERFECT MIX
- 12 HEALTHY ENVIRONMENTS
- 14 MY HOME IS A TREE

Products & Collections

Premium

- 18 PAINTS
- 26 FINISHES
- 30 MORTARS & PUTTIES
- 34 PRIMERS & TREATMENTS

Nature

- 40 PAINTS
- 41 TREATMENTS
- 42 MORTARS

The Earth Collection

- 46 PHILOSOPHY
- 50 PAINTS & STUCCOS
- 52 MORTARS
- 54 PROTECTORS
- 54 COLOURS & TEXTURES

58 Quality

63 Awards

64 Showrooms

66 Global

Profile

Graphenstone, paints and coatings for the green generation.

Graphenstone is the brainchild of a young chemical engineer committed to develop a natural, ecological and healthy coating. Antonio León Jiménez was that young man and today he is president and CTO (Chief Technical Officer) of Graphenstone.

After working as CTO in a successful coatings firm, Antonio León began his new enterprise IEdiSA (2009), the foundation of Graphenstone.

A few years later, the president of Graphenstone developed a new line of natural paints and mortars using artisanal lime. A unique lime with a 100% natural and environmentally friendly production cycle. Thus a tradition which had been forgotten was back to the market.



Our contribution to the building of healthier and sustainable homes.

A step beyond. After generating new ecological, natural and sustainable coatings based in lime, Antonio León takes it a step further and innovates by adding graphene fibres to the formula. The objective behind the utilization of graphene was to enhance the product's properties; improving resistance, flexibility and conductivity while maintaining the natural qualities.

Perseverance was key. After a whole year of research at the University of Seville, and numerous unsuccessful attempts, the CTO achieves his goal: to develop a graphene polymer able to improve the material qualities with outstanding results.

The first range of paints and coatings with graphene technology.

Graphenstone is born November 2013. That young man's dream comes true. He achieves a worldwide groundbreaking product that is eco-friendly and beneficial. Since then we have continued to work vigorously in the creation of healthier and more sustainable homes.



WORDL'S FIRST

Lime Basis

High Quality Lime is the raw material of Graphenstone's products

The Graphenstone products use lime which is made in wood burning kilns, which results in a lime with high whiteness and purity. This natural lime, has been produced in this way since the mid-nineteenth century.

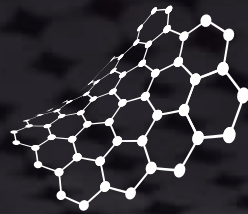
Furthermore, the lime cycle is 100% natural, from the wood that's used to feed the oven, through the firing, to the collection.



The artisan method to obtain the lime results in a high whiteness and purity.



Unique qualities of graphene



FLEXIBILITY

Up to 20% flexibility
without damage.

STRENGTH

200 times stronger than
structural steel.

THERMAL CONDUCTIVITY

Scientifically proven
high thermal conductivity.

ELECTRICAL CONDUCTIVITY

1000 times better conductor
of electric current density than
copper.

WORLD'S FIRST

Graphene Technology

Graphene based innovation:
increased hardness, homogeneity,
strength, conductivity and flexibility

The graphene fibres provide the coatings and
paints of Graphenstone with innovative qualities:
thermal conductivity, greater toughness, flexibility,
strength and uniformity. This nanotechnology
compound acts as a structural support mesh at
the molecular level, which translates into greater
durability and therefore lower maintenance and
more significant savings.

“We use this technology
to achieve more efficient
materials that meet the
requirements of a highly
demanding market
committed to new
and more sustainable
manufacturing
methodology.”



AN INCOMPARABLE PAINT

Perfect Mix

Tradition, innovation and technology
are the perfect ingredients

Lime and graphene combined form the ultimate ecological, natural coatings and paints in the world. This is why the Graphenstone products have great performance and covering properties. Thanks to their flexibility the coatings does not crack or flake off. It also contributes to energy savings due to its great reflective power. Moreover, thanks to its mineral character it reduces the reverberance of the sound.

We design and manufacture with respect for the environment, the circular economy and energy efficiency; this is the reason why our products fit perfectly in Green or Eco Buildings, Passive Houses, and Smart Cities.



Graphenstone is the most advanced
solution of ecological and natural,
paints and coatings in the market.



Healthy Environments



HIGH QUALITY
LIME BASE



SUSTAINABLE
BUILDING



SMART CITIES



HIGH QUALITY
& CERTIFICATION



GRAPHENE
TECHNOLOGY



UNIQUE IN
THE WORLD



ENERGY
SAVINGS



RESISTS EXTREME
WEATHER CONDITIONS



HERITAGE
RESTORATION



HOUSING &
SCHOOLS



MINIMUM
CARBON FOOTPRINT



COSTS
SAVINGS



REDUCES SOUND
TRANSMISSION



INTERIORS



LABORATORIES &
RESEARCH CENTRES



BREATHABLE
PURIFIES THE
ENVIRONMENT



HIGH
PERFORMANCE



CREATES HEALTHY
ENVIRONMENTS



EXTERIORS



HEALTH
SECTOR



ABSORBS CO₂



RESISTANT
& DURABLE



HIGH-STANDARD
DECORATION



STORES



INDUSTRY



100% ECOLOGICAL
ECO FRIENDLY



WASHABLE



ART &
DECORATION



LARGE
SURFACES



OFFICES
& UNIVERSITIES

MY HOME IS A TREE

Transform your HOUSE into a TREE by painting with Graphenstone

Imagine transforming your home, your building or your town into a much greener place! With Graphenstone, this is now a reality. Just three 15 litre buckets of Graphenstone paint removes no less than 14.40kg of CO₂. The same amount as an adult tree weighing 250kg!

Convert your home into a tree, your building into a garden and your town into a forest. This incredible change is possible today. And Graphenstone provides the key. Let's create a more sustainable world.

More information about the campaign at:
www.myhomeisatree.com

Three 15 litre buckets removes no less than 14.40Kg of CO₂



How does our paint absorbs CO₂?

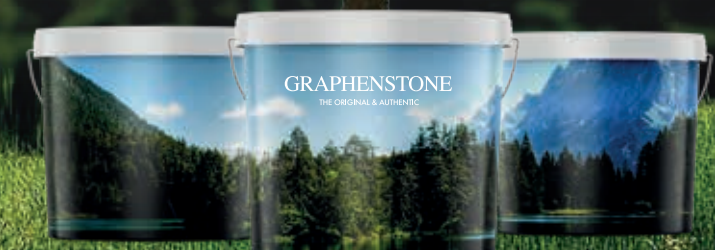
It is possible thanks to the raw materials. We have remade a paint that already existed and has been used for hundreds of years: **a natural lime based** paint. It absorbs CO₂ during its carbonation process which helps reduce the CO₂ in the air, it is a **highly breathable paint**, it has natural antibacterial and insect repellent properties.

It is a material found in the nature and can **help us to transform our home into an eco-friendly place**. But that is not all, we have improved the paint by adding Graphene fibres that optimize its properties and gives it durability.

Why it's important to reduce CO₂?

The high concentrations of CO₂ in the world increases the **greenhouse effect** that is contributing to a rise of the temperature on Earth. In addition, the air **pollution in cities** is causing serious concern for the health of those living there. Our products can help improve the quality of the world's air.

HELP US TO
OBTAIN THE
SAME EFFECT AS
1,000,000
TREES.



Premium

PAINTS

Biosphere *Premium*

Natural exterior paint

Ecosphere *Premium*

Natural interior paint

AmbientPro+ *Premium*

Natural photocatalytic paint

Proshield *Premium*

Conductive shielding paint

GrafClean *Premium*

Ecological paint with graphene

GrafClean Ext *Premium*

Ecological paint with graphene for exteriors

GrafClean Front *Premium*

Ecological paint with graphene for facades

GrafClean Therm *Premium*

Ecological thermal insulating paint

GrafClean Ag+ *Premium*

Ecological antimicrobial paint

Biosphere

Premium

Natural mineral paint with graphene
EXTERIOR



1L | 2.5L* | 3L* | 4L | 10L* | 12.5L | 15L | 20L*
*International markets.

Biosphere Premium is a natural mineral paint for outdoor matte finish. Ideal for construction, restoration and repainting. Thanks to its formula based on artisanal lime with graphene technology, it is breathable, avoids condensation, is washable, does not yellow and absorbs CO₂.



BREATHABLE
PURIFIES THE
ENVIRONMENT



ABSORBS CO₂
SUSTAINABLE
PRODUCT



EXCELLENT
COVERING POWER

| | |
|------------------------|--------------------------|
| PERFORMANCE (2 coats) | 6-9 m²/L |
| PERFORMANCE (1 coat) | 12-18 m²/L |
| DRYING (between coats) | 2-4 hours |
| TOTAL DRYING | 24 hours |
| APPLICATION TOOLS | Brush, roller or airless |
| TOOLS CLEANING | Water |
| COVERING POWER | Excellent |
| WASHABILITY | Good |
| FINISH | Natural matte |
| COLOURS | White / Soft Selection |



Ecosphere

Premium

Natural mineral paint with graphene
INTERIOR



1L | 2.5L* | 3L* | 4L | 10L* | 12.5L | 15L | 20L*
*International markets.

Ecosphere Premium is a natural mineral paint for interiors with a matte finish. Ideal for construction, restoration and repainting. Thanks to its formula based on artisanal lime with graphene technology, it is breathable, avoids condensation, is washable, does not yellow and absorbs CO₂.



BREATHABLE
PURIFIES THE
ENVIRONMENT



ABSORBS CO₂
SUSTAINABLE
PRODUCT



EXCELLENT
COVERING POWER

| | |
|------------------------|--------------------------|
| PERFORMANCE (2 coats) | 6-9 m²/L |
| PERFORMANCE (1 coat) | 12-18 m²/L |
| DRYING (between coats) | 2-4 hours |
| TOTAL DRYING | 24 hours |
| APPLICATION TOOLS | Brush, roller or airless |
| TOOLS CLEANING | Water |
| COVERING POWER | Excellent |
| WASHABILITY | Good |
| FINISH | Natural matte |
| COLOURS | White / Soft Selection |



AmbientPro+

Premium

Natural photocatalytic paint with graphene
EXTERIOR / INTERIOR



1L | 2.5L* | 3L* | 4L | 5L* | 12.5L | 15L | 20L*
*International markets.

AmbientPro+ Premium is a natural photocatalytic paint with graphene technology. It decomposes organic compounds and inorganic gases by the incidence of light (natural or artificial) on the nanoparticle of titanium oxide, photocatalyst component. Ideal for the decontamination of pollution in cities. It favors the elimination of odours of domestic animals, tobacco, etc.



BREATHABLE
PURIFIES THE
ENVIRONMENT



ABSORBS CO₂
SUSTAINABLE
PRODUCT



ELIMINATES
ODOURS

| | |
|------------------------|--------------------------|
| PERFORMANCE (2 coats) | 6-9 m²/L |
| PERFORMANCE (1 coat) | 12-18 m²/L |
| DRYING (between coats) | 2-4 hours |
| TOTAL DRYING | 24 hours |
| APPLICATION TOOLS | Brush, roller or airless |
| TOOLS CLEANING | Water |
| COVERING POWER | Excellent |
| WASHABILITY | Good |
| FINISH | Natural matte |
| COLOURS | White / Soft Selection |



Proshield


Premium

Conductive shielding paint with graphene
EXTERIOR / INTERIOR




1L | 3L* | 4L | 5L* | 12.5L | 15L | 20L*
*International markets.


Proshield Premium is a conductive paint with graphene. These are carbon particles, contained in an emulsion of a pure acrylic of high quality in aqueous medium. Designed for the protection against high and low frequency electromagnetic radiation.



HIGH LOW
PROTECTION
AGAINST RADIATION



ATTENUATION
32 dB at 900 MHz
(IEEE 299:2006).



FREE OF METALLIC
COMPONENTS

| | |
|------------------------|--|
| PERFORMANCE (1 coat) | 7-8 m²/L |
| DRYING (between coats) | 4-6 hours |
| TOTAL DRYING | 24 hours |
| APPLICATION TOOLS | Short hair roller or airless |
| TOOLS CLEANING | Water |
| PRODUCT APPEARANCE | Black |
| PROTECTION AGAINST | High frequency radiation & low frequency electric field. |
| SHIELDING EFFICIENCY | 32 dB of attenuation at 900 MHz (IEEE 299:2006). |



GrafClean

White

Premium

Ecological paint with graphene

EXTERIOR / INTERIOR

GrafClean

Colour

Premium

Ecological colour paint with graphene

EXTERIOR / INTERIOR

GrafClean

EXT

Premium

Ecological paint with graphene

EXTERIORS

GrafClean

FRONT

Premium

Ecological paint with graphene

EXTERIOR FACADES

White



1L | 2.5L* | 4L | 12.5L | 15L

*International markets.

GrafClean Premium is an ecological paint with graphene technology and matte finish. Application in construction and repainting. Ideal for decorating facades and interiors. Free of VOC emissions, and certified for moisture control in concrete surface protection systems (EN 1504-2).



ECOLOGICAL PAINT
BREATHABLE



VERY GOOD
COVERING POWER



WASHABLE
& RESISTANT

PS Colour ⁽¹⁾



TR Colour ⁽³⁾

MD Colour ⁽²⁾

0.75L | 4L | 12.5L* | 15L

*TR Colour available in 0.75L, 4L y 12.5L

GrafClean Premium Colour is an ecological paint with graphene technology and matte finish. With selected pigments that allow to create resistant and long-lasting colors. Ideal for application in construction and repainting. Also for decorating facades and interiors. The pigmented product is free of VOC emissions.

(1) Pastel Base for the obtention of pastel or light colours.

(2) Medium Base for the obtention of medium colours.

(3) Transparent Base for the obtention of dark or intense colours.



ECOLOGICAL PAINT
BREATHABLE



DURABLE
COLOUR



WASHABLE
& RESISTANT

White



Colour

1L | 2.5L** | 4L | 12.5L | 15L

**International markets.

GrafClean EXT Premium is an ecological paint with graphene technology and matte finish. Application in construction and repainting. Ideal for decorating facades. Free of VOC emissions, certified* for moisture control in concrete surface protection systems (EN 1504-2) and with anti-fungal and anti-algae effect.

*Paint without pigment.

ANTI-FUNGAL & ANTI-ALGAE EFFECT



ECOLOGICAL PAINT
BREATHABLE



GREAT
COVERING POWER



WASHABLE



ANTI-FUNGAL
ANTI-ALGAE
EFFECT

White



Colour ⁽¹⁾

1L | 2.5L** | 4L | 12.5L | 15L

**International markets.

GrafClean FRONT Premium is an ecological paint with graphene technology with matte finish. It is specially indicated for use on facades with high incidence to UV rays. Intended for professional use.

(1) Check colour availability (min. order 280L).

U.V. RAY-RESISTANT FORMULA



ECOLOGICAL PAINT
BREATHABLE



GREAT
COVERING POWER



UV RESISTANT

| | |
|------------------------|--------------------------|
| PERFORMANCE (2 coats) | 5-8 m²/L |
| PERFORMANCE (1 coat) | 10-16 m²/L |
| DRYING (between coats) | 2-4 hours |
| TOTAL DRYING | 24 hours |
| APPLICATION TOOLS | Brush, roller or airless |
| TOOLS CLEANING | Water |
| COVERING POWER | Very good |
| WASHABILITY | Excellent |
| FINISH | Matte |
| COLOURS | White |

| | |
|------------------------|-------------------------------------|
| PERFORMANCE (2 coats) | 5-8 m²/L |
| PERFORMANCE (1 coat) | 10-16 m²/L |
| DRYING (between coats) | 2-4 hours |
| TOTAL DRYING | 24 hours |
| APPLICATION TOOLS | Brush, roller or airless |
| TOOLS CLEANING | Water |
| COVERING POWER | Very good |
| WASHABILITY | Excellent |
| FINISH | Matte |
| COLOURS | GCS 980 Interior / GCS 322 Exterior |

| | |
|------------------------|--------------------------|
| PERFORMANCE (2 coats) | 5-8 m²/L |
| PERFORMANCE (1 coat) | 10-16 m²/L |
| DRYING (between coats) | 2-4 hours |
| TOTAL DRYING | 24 hours |
| APPLICATION TOOLS | Brush, roller or airless |
| TOOLS CLEANING | Water |
| COVERING POWER | Very good |
| WASHABILITY | Excellent |
| FINISH | Matte |
| COLOURS | White / GCS 322 Exterior |

| | |
|------------------------|------------------------------------|
| PERFORMANCE (2 coats) | 5-8 m²/L |
| PERFORMANCE (1 coat) | 10-16 m²/L |
| DRYING (between coats) | 2-4 hours |
| TOTAL DRYING | 24 hours |
| APPLICATION TOOLS | Brush, roller or airless |
| TOOLS CLEANING | Water |
| COVERING POWER | Very good |
| WASHABILITY | Excellent |
| FINISH | Matte |
| COLOURS | White / Check colours availability |

20

21

GrafClean

THERM White Premium

Thermal insulating ecological paint
EXTERIOR / INTERIOR

White



1L | 4L | 15L

Available formats

GrafClean Therm Premium is an ecological thermal insulating paint with glass microspheres. Creates an air chamber generating a thermal bridge rupture. It maintains a pleasant temperature throughout the year and appreciable energy savings in your home. It avoids the humidities by condensation, which in turn favors the non-proliferation of microorganisms in the support.

GLASS MICROSPHERES FORMULA



ECOLOGICAL PAINT
BREATHABLE



VERY GOOD
COVERING POWER
WASHABLE



REGULATES TEMPERATURE
AVOID CONDENSATIONS

| | |
|------------------------|------------------------------------|
| PERFORMANCE (2 coats) | 5-8 m²/L |
| PERFORMANCE (1 coat) | 10-16 m²/L |
| DRYING (between coats) | 2-4 hours |
| TOTAL DRYING | 24 hours |
| APPLICATION TOOLS | Brush or roller |
| TOOLS CLEANING | Water |
| COVERING POWER | Very good |
| WASHABILITY | Excellent |
| FINISH | Matte |
| COLOURS | White / Check colours availability |



GrafClean

Ag+ White Premium

Ecological antimicrobial paint
INTERIOR

White



1L | 4L | 15L

Available formats

GrafClean Ag+ Premium is an ecological paint with silver ion (Ag+) formula, which gives it antimicrobial properties preventing the development of bacteria, fungus, viruses and protozoa. Ideal for decorating interiors of buildings, homes, hospitals, clinics, etc.

FREE VOCs + ANTIMICROBIAL EFFECT



ANTIMICROBIAL
EFFECT



VERY GOOD
COVERING POWER
WASHABLE



BREATHABLE
PRODUCT

| | |
|------------------------|--------------------------|
| PERFORMANCE (2 coats) | 5-8 m²/L |
| PERFORMANCE (1 coat) | 10-16 m²/L |
| DRYING (between coats) | 2-4 hours |
| TOTAL DRYING | 24 hours |
| APPLICATION TOOLS | Brush, roller or airless |
| TOOLS CLEANING | Water |
| COVERING POWER | Very good |
| WASHABILITY | Excellent |
| FINISH | Matte |
| COLOURS | White |



Compare the range GrafClean

GrafClean
White Premium



NATURE
VOCs & APEO free
emulsion

EMISSIONS
Free of VOC emissions
(Class A+)



USE
Exterior / Interior

EFFECT
Moisture control

FINISH
Matte

BREATHABILITY
★★★★★

WASHABILITY
★★★★★

COVERING POWER
★★★★★

ADHESION,
RESISTANCE & DURABILITY
★★★★★

FLEXIBILITY
RESISTANCE TO PEELING
★★★★★

GRAPHENE TECHNOLOGY



GrafClean
EXT White Premium



NATURE
VOCs & APEO free
emulsion

EMISSIONS
Free of VOC emissions
(Class A+)



USE
Exterior

EFFECT
Anti-fungi / Anti-algae

FINISH
Matte

BREATHABILITY
★★★★★

WASHABILITY
★★★★★

COVERING POWER
★★★★★

ADHESION,
RESISTANCE & DURABILITY
★★★★★

FLEXIBILITY
RESISTANCE TO PEELING
★★★★★

GRAPHENE TECHNOLOGY



GrafClean
FRONT Premium



NATURE
Ecological
acrylic

EMISSIONS
Low VOC
emissions



USE
Exterior

EFFECT
UV-Ray resitant

FINISH
Matte

BREATHABILITY
★★★★☆

WASHABILITY
★★★★★

COVERING POWER
★★★★★

ADHESION,
RESISTANCE & DURABILITY
★★★★★

FLEXIBILITY
RESISTANCE TO PEELING
★★★★★

GRAPHENE TECHNOLOGY



GrafClean
THERM White Premium



NATURE
VOCs & APEO free emulsion
+ Glass microspheres

EMISSIONS
Free of VOC emissions
(Class A+)



USE
Exterior / Interior

EFFECT
Thermal insulating
Anti-condensation

FINISH
Matte

BREATHABILITY
★★★★★

WASHABILITY
★★★★★

COVERING POWER
★★★★★

ADHESION,
RESISTANCE & DURABILITY
★★★★★

FLEXIBILITY
RESISTANCE TO PEELING
★★★★★

GRAPHENE TECHNOLOGY



GrafClean
Ag+ White Premium



NATURE
VOCs & APEO free
emulsion + Silver Ion

EMISSIONS
Free of VOC emissions
(Class A+)



USE
Interior / Exterior

EFFECT
Antimicrobial action

FINISH
Matte

BREATHABILITY
★★★★★

WASHABILITY
★★★★★

COVERING POWER
★★★★★

ADHESION,
RESISTANCE & DURABILITY
★★★★★

FLEXIBILITY
RESISTANCE TO PEELING
★★★★★

GRAPHENE TECHNOLOGY



Premium

FINISHES

Kratzputz *Premium*
Textured natural coating

Coatexture *Premium*
Textured mineral paint

Stuki *Premium*
Venetian stucco natural coating

Kratzputz

Premium

Textured natural coating with graphene
EXTERIOR / INTERIOR



1L | 4L | 15L

Available formats

Kratzputz Premium is a natural coating with graphene technology with a textured finish (with a granulometry up to 2 mm). Ideal for decorating facades in areas of extreme meteorological conditions, such as heavy rain or snow. Also, used for textured interiors.



BREATHABLE
PURIFIES THE
ENVIRONMENT



ABSORBS CO₂
SUSTAINABLE
PRODUCT



HIGH RESISTANCE
TO EXTREME WEATHER
CONDITIONS

| | |
|----------------------|---|
| PERFORMANCE (1 coat) | 3-4 L/m ² |
| TOTAL DRYING | 24 hours |
| APPLICATION TOOLS | Metallic trowel |
| TOOLS CLEANING | Water |
| FINISH | Matte / Textured |
| COLOURS | White |
| APPLICATION SURFACES | All types of common surfaces in construction: mortar, brick, concrete, etc. |



Coatexture

TX-200 Premium

Textured mienral paint with graphene
EXTERIOR / INTERIOR



1L | 3L* | 4L | 12.5L | 15L | 20L*

*International markets.

Coatexture Premium is a mineral paint with graphene technology and matte textured finish. Application in construction, restoration and repainting. Guarantees the breathability of the building.



BREATHABLE
MINERAL PRODUCT



TEXTURED
FINISH



FLEXIBLE
NON CRACKING

| | |
|----------------------|---|
| PERFORMANCE (1 coat) | 4-5 m ² /L |
| TOTAL DRYING | 24 hours |
| APPLICATION TOOLS | Stipple roller or brush |
| TOOLS CLEANING | Water |
| FINISH | Matte / Textured |
| COLOURS | White / Soft Selection |
| APPLICATION SURFACES | All types of common surfaces in construction: mortar, brick, concrete, old paints, etc. |



Stuki

Premium

Venetian stucco natural coating
EXTERIOR / INTERIOR



1L (b) | 3L (b)** | 4L (b) | 5L (b)** | 12.5L (b) | 15L (b) | 20L (b)**

**International markets | (b) Bi-component format.

Stuki Premium is a natural coating with graphene technology to obtain stucco finishes. It is easy to apply and allows a great versatility of high decoration works. Ideal for works with criteria of biohabitability, rehabilitation or sustainable restoration of buildings.

(1) Stuki Colour. Colours on request.



ABSORBS CO₂
SUSTAINABLE
PRODUCT



MARBLE EFFECT
FINISH



GLOSS
FINISH

| | |
|------------------------|---|
| PERFORMANCE (2 coats) | 4-5 m ² /L |
| DRYING (between coats) | 30 min. |
| POLISHING (by hand) | 30-40 min. |
| POLISHING (by machine) | 90 min. |
| APPLICATION TOOLS | Stucco trowel or Japanese finishing trowels, electric polisher (optional) |
| TOOLS CLEANING | Water |
| FINISH | Marble / Glossy |
| COLOURS | White GCS 980 Interior / GCS 322 Exterior |



Premium

MORTARS & PUTTIES

MortarBase *Premium*

Natural coarse mortar

MortarFine *Premium*

Natural fine mortar

MortarSuper *Premium*

Natural superfine mortar

Naturglue *Premium*

Natural adhesive mortar

MinerMastic *Premium*

Mineral renovation putty

EcoPutty P64 *Premium*

Natural smoothing & repairing putty

MortarBase

Premium

Natural lime base mortar with graphene
COARSE FINISH



Kalgraphin Premium is a liquid lime putty with graphene for mortars preparation.

13.5 Kg + 4.5 Kg (Bi-component)

MortarBase Premium + Kalgraphin Premium

MortarBase Premium is an ecological rendering mortar with graphene technology. Ideal for rendering, grouts in rehabilitation work and restoration. It is used as a first regulation coat thanks to its coarse aggregates.

Rendering grouts and as a first regulation coat in rehabilitation, restoration and new works.



BREATHABLE
ABSORBS CO₂



HIGH ADHERENCE
& FLEXIBILITY



LOW WATER
ABSORPTION

MortarFine

Premium

Natural lime base mortar with graphene
FINE FINISH



Kalgraphin Premium is a liquid lime putty with graphene for mortars preparation.

13.5 Kg + 4.5 Kg (Bi-component)

MortarFine Premium + Kalgraphin Premium

MortarFine Premium is an ecological rendering mortar with graphene technology. Ideal for plastering in building, rehabilitation and restoration. It is applied in one or two layers depending on the type of finish, such as smooth, trowelled and engraved textures, as well as pitted finishes, ashlar, sgraffito, etc.

Plastering and smooth finishes in rehabilitation, restoration and new works.



BREATHABLE
ABSORBS CO₂



HIGH ADHERENCE
& FLEXIBILITY



LOW WATER
ABSORPTION

| | |
|------------------------|---|
| PERFORMANCE (12 mm) | 20 Kg/m ² |
| DRYING (between coats) | 24-48 hours |
| DRYING (plastering) | 24-48 hours |
| APPLICATION TOOLS | Masonry brush, double-mix projecting machine, notched trowel or similar, sponge trowel. |
| TOOLS CLEANING | Water |
| FINISH | Coarse |
| COLOURS | White |



| | |
|------------------------|--|
| PERFORMANCE (2-3 mm) | 3 Kg/m ² |
| DRYING (between coats) | 24-48 hours |
| DRYING (painting) | 4 days |
| APPLICATION TOOLS | Trowel. Finishing trowel. |
| TOOLS CLEANING | Water |
| FINISH | Fine |
| COLOURS | White / GCS 322 Exterior |
| APPLICATION SURFACES | Prefabricated panels, concrete, paint, tiles, etc. |



MortarSuper

Premium

Natural lime base mortar with graphene
SUPERFINE FINISH



Kalgraphin Premium is a liquid lime putty with graphene for mortars preparation.

11.25 Kg + 4.5 Kg (Bi-component)

MortarSuper Premium + Kalgraphin Premium

MortarSuper Premium is a superfine natural mortar with graphene technology. It is applied as a final finishing coat for high-decoration finishes such as ironing, texturised, combed, etc. Ideal for plastering in building, rehabilitation and restoration works.

High decoration finishes (textured, combed...) in rehabilitation, restoration and new works.



BREATHABLE
ABSORBS CO₂



HIGH ADHERENCE
& FLEXIBILITY



LOW WATER
ABSORPTION

| | |
|------------------------|--|
| PERFORMANCE (1-2 mm) | 3.5 Kg/m ² |
| DRYING (between coats) | 24-48 hours |
| DRYING (painting) | 4 days |
| APPLICATION TOOLS | Trowel. Finishing trowel. |
| TOOLS CLEANING | Water |
| FINISH | Superfine |
| COLOURS | White / GCS 322 Exterior |
| APPLICATION SURFACES | Prefabricated panels, concrete, paint, tiles, etc. |



Naturglue

Premium

Natural lime base adhesive mortar with graphene
FLEXIBLE REPAIRING MORTAR



Kalgraphin Premium is a liquid lime putty with graphene for mortars preparation.

13 Kg + 4.5 Kg (Bi-component) | 2.9 Kg (Box) (Bi-component)

Naturglue Premium + Kalgraphin Premium

Naturglue Premium is a highly flexible natural adhesive mortar with graphene technology. Ideal for bonding tiles, ceramics and as an anchor for insulation boards (EIFS) and non-flooding solutions. Also for rehabilitation and restoration works.

Bonding tiles, ceramics and as an anchor for insulation boards (EIFS) in rehabilitation, restoration and new works.



BREATHABLE
ABSORBS CO₂



HIGH ADHERENCE
& FLEXIBILITY



LOW WATER
ABSORPTION

| | |
|------------------------|---|
| PERFORMANCE (5 mm) | 5 Kg/m ² |
| DRYING (between coats) | 24-48 hours |
| DRYING (finishing) | 24-48 hours |
| APPLICATION TOOLS | Trowel, notched trowel, brush. |
| TOOLS CLEANING | Water |
| PRODUCT APPEARANCE | Sand colour |
| APPLICATION SURFACES | All types of common surfaces in construction: mortar, brick, concrete, prefabricated plates, etc. |



MinerMastic

Premium

Mineral renovation putty with graphene
REPAIR SMALL SURFACE DEFECTS



0.75L | 4L | 12.5L
Available formats

MinerMastic Premium is a mineral renovation putty to repair surface defects. Application to fill small defects such as cracks, small holes and superficial fissures (1-3 mm) and to smooth rough surfaces, large surface defects, repair chipping of existing paint. For application in interiors and exteriors under roof.



REPAIRS SURFACE
IRREGULARITIES



PLATE JOINS
FILLING



GOOD
SANDABILITY

| | |
|--------------------|------------------------------------|
| PERFORMANCE | 0.6-0.7 kg/m² |
| TOTAL DRYING | 24 hours |
| APPLICATION TOOLS | Spatula or trowel |
| TOOLS CLEANING | Water |
| PRODUCT APPEARANCE | Beige powder |
| FINISH | Fine texture |
| USE | Interiors and exteriors under roof |



EcoPutty

P64
Premium

Natural smoothing & repairing putty
SMOOTH & REPAIR LARGE SURFACE DEFECTS



15 Kg
Available formats

Ecoputty Premium is a natural putty for smoothing rough surfaces or larger superficial defects, repairing the scaling/blistering of the existing paint with deterioration of less than 3 mm, etc. Also it is used to regularize the surface in building system of prefabricated or wooden boards. For application in interiors and exteriors.



SMOOTHS & REPAIRS
LARGE SURFACES



EXCELLENT
ADHESION



FLEXIBLE
NON CRACKING

| | |
|--------------------|-------------------------|
| PERFORMANCE (1 mm) | 0.5-1.5 kg/m² |
| TOTAL DRYING | 24 hours |
| APPLICATION TOOLS | Trowel |
| TOOLS CLEANING | Water |
| PRODUCT APPEARANCE | Beige powder |
| FINISH | Mineral texture |
| USE | Interiors and exteriors |



Premium

PRIMERS & TREATMENTS

Filler Premium
Mineral primer for paint

AmbientPrimer L42/L44 Premium
Primers for absorbent supports

Four2Four Premium
Adherence primer for paints

Contak Premium
Adherence primer for mortars

Hydroxeal Premium
Water-repellent treatment

Neutralysal Premium
Saltpeter-resistant treatment

StopWater Premium
Anti-moisture treatment

Minerseal Premium
Mineral sealer

BeeWax Premium
Lime stucco & mortar protector

Filler

Premium

Mineral primer with graphene for paint
EXTERIOR / INTERIOR



1L | 3L* | 4L | 12.5L | 15L | 20L*
*International markets.

Filler Premium is a mineral primer with graphene technology for paint. Ideal for surfaces with irregular textures, surface fissures (up to 1 mm) and / or peeling areas. For indoor and outdoor use. Its formulation is breathable, prevents condensation and does not crack.



BREATHABLE
PRODUCT



REGULATES
THE TEXTURE
OF THE SUPPORT



MATERIAL & WORK
SAVINGS

| | |
|----------------------|---|
| PERFORMANCE (1 coat) | 5-7 m²/L |
| DRYING (painting) | 4-6 hours |
| APPLICATION TOOLS | Brush or roller |
| TOOLS CLEANING | Water |
| PRODUCT APPEARANCE | Dense liquid |
| APPLICATION SURFACES | Deteriorated paints, surfaces with microcracks and/or irregular textures. |



AmbientPrimer

Premium

Primer, sealer & fixer for absorbent supports
EXTERIOR / INTERIOR



1L | 4L | 5L* | 10L* | 12.5L | 15L | 20L*
*International markets.

AmbientPrimer Premium is a primer that homogenizes and reduces the absorption of the substrate, favoring the subsequent saving of paint. It also consolidates the support. Recommended for absorbent supports and / or with lack of firmness. There are two versions: without and with anti-algae and anti-mold effect, L42 and L44 respectively.



NOT ALTER
THE BREATHABILITY
OF THE SUPPORT

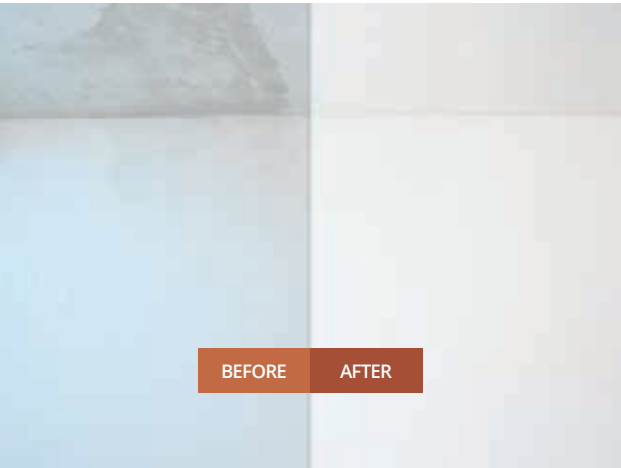


REGULATES
THE TEXTURE
OF THE SUPPORT



MATERIAL & WORK
SAVINGS

| | |
|----------------------|--|
| PERFORMANCE (1 coat) | 26-30 m²/L |
| TOTAL DRYING | 24 hours |
| APPLICATION TOOLS | Brush, roller or spray gun |
| TOOLS CLEANING | Water |
| PRODUCT APPEARANCE | Liquid / Colourless |
| APPLICATION SURFACES | All types of surfaces common in construction, excepting gypsum or perlite plaster. |



Four2Four

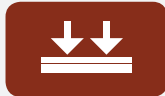
Premium

Adherence bridge, antioxidant & sealer
PAINTS, METALS & WOODS



0.75L | 4L
Available formats

Four2Four Premium is an adherence bridge for paint. It ensures adherence of mineral paint to all types of surfaces such as tiles, phenolic panels, polyurethane paint, etc., for indoors and outdoors applications. In addition, it acts as an antioxidant in metal substrates (free of corrosion or oxidation) and as a sealant of wood, MDF boards and stains on interior walls.



EXCELLENT
ADHERENCE

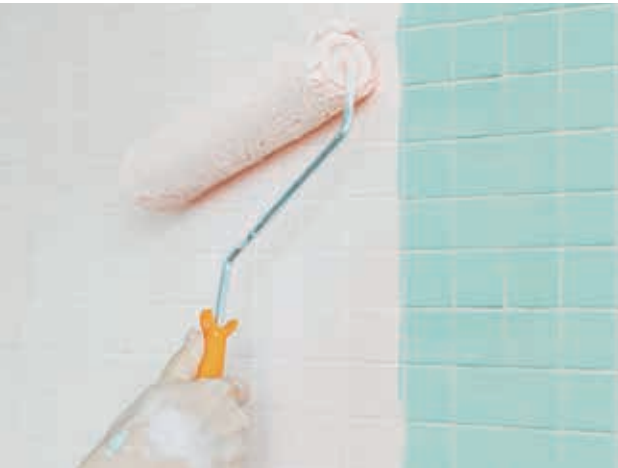


ANTIOXIDANT
ON METAL SURFACES



SEALER
ON WOOD &
MDF BOARDS

| | |
|------------------------|---|
| PERFORMANCE (1 coat) | 10-11 m²/L |
| DRYING (between coats) | 30"-60" min. |
| DRYING (painting) | 6-8 hours |
| APPLICATION TOOLS | Brush, roller or spray gun |
| TOOLS CLEANING | Water |
| PRODUCT APPEARANCE | White liquid |
| APPLICATION SURFACES | Ceramics, polyurethane or epoxy paints, plasticized panels, etc. Also on metal or wood. |



Contak

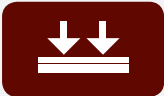
Premium

Adherence bridge for mortars
MECHANICAL GRIP FOR SMOOTH SURFACES



1L | 3L* | 4L | 5L* | 12.5L | 15L | 20L*
*International markets.

Contak Premium is an adherence bridge for mortars on smooth surfaces. It is ideal to provide a mechanical grip to plaster mortars and adhesives on a smooth surfaces such as glass, ceramic, metals, wood, cement, etc.



EXCELLENT
ADHERENCE



MECHANICAL GRIP
FOR MORTARS



EASY
TO APPLY

| | |
|----------------------|--|
| PERFORMANCE (1 coat) | 7-9 m2/L |
| TOTAL DRYING | 24 hours |
| APPLICATION TOOLS | Brush or roller |
| TOOLS CLEANING | Water |
| PRODUCT APPEARANCE | Red dense liquid |
| APPLICATION SURFACES | Smooth surfaces such as glass, ceramic, metals, wood, concrete smooth, et C. |



Neutralysal

Premium

Salt peter-resistant treatment
WALL SANITATION



1L (Bottle) | 5L (Container)
Available formats

Neutralysal Premium is a colorless salt peter-resistant treatment. It is for sanitation of walls that have been degraded by salt peter. It prevents the appearance of white stains caused by absorption of water by capillarity with salinity from the wall.



PROTECTION
AGAINST SALT PETER

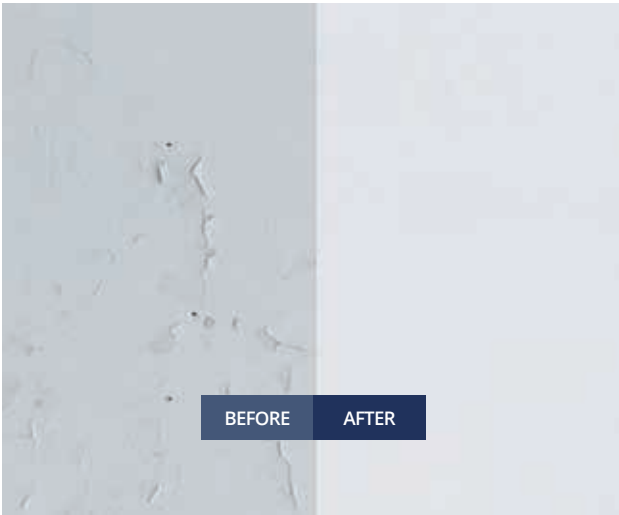


PREVENTS
WHITE SPOTS



HIGH RESISTANCE
& DURABILITY

| | |
|----------------------|----------------------------|
| PERFORMANCE (1 coat) | 7-8 m²/L |
| TOTAL DRYING | 24 hours |
| APPLICATION TOOLS | Brush, roller or spray gun |
| TOOLS CLEANING | Water |
| PRODUCT APPEARANCE | Yellowish liquid |



Hydroxeal

Premium

Water-repellent treatment for mineral mortars or paints
HUMID OR ATMOSPHERICALLY POLLUTED AREAS



1L (Bottle) | 5L (Container)
Available formats

Hydroxeal Premium is a hydrophobic treatment for humid areas or atmospheric dirt. It prevents the capillary absorption of water and its contaminants without clogging the pores and, therefore, without significantly altering the permeability of the substrate to gases and water vapor.



NOT ALTER
THE BREATHABILITY
OF THE SUPPORT

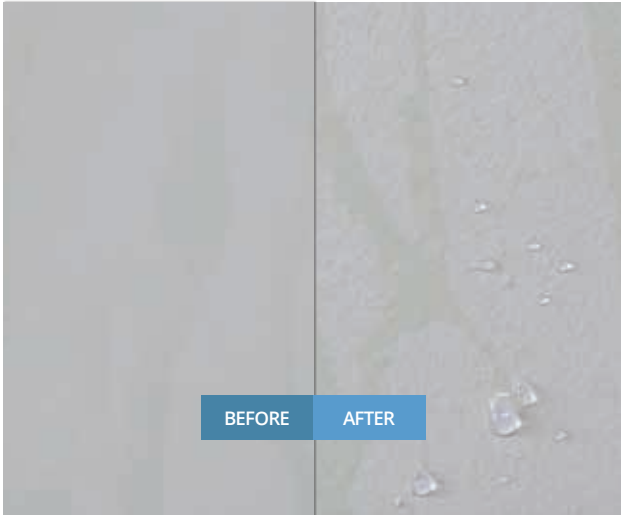


IDEAL FOR
HUMID AREAS



PENETRATES
INTO THE SUPPORT

| | |
|---------------------|---|
| PERFORMANCE | 100-200 ml/m² (on mineral paints) 400-500 ml/m² (on mineral mortars) |
| TOTAL DRYING | 24 hours |
| APPLICATION TOOLS | Brush, roller or spray gun |
| TOOLS CLEANING | Water |
| APPEARANCE / FINISH | Whitish liquid / Colourless |



StopWater

Premium

Anti-moisture treatment prior painting
RETAINS THE MOISTURE OF THE WALL



1L (Bottle) | 5L (Container)
Available formats

StopWater Premium is an anti-moisture treatment prior to painting; It also acts as a support consolidator. It is a temporary barrier that retains the humidity coming from the wall allowing to paint correctly. The product is degraded by the high pH of Graphenstone® coatings.



REGULATES
ABSORPTION
OF THE SUPPORT

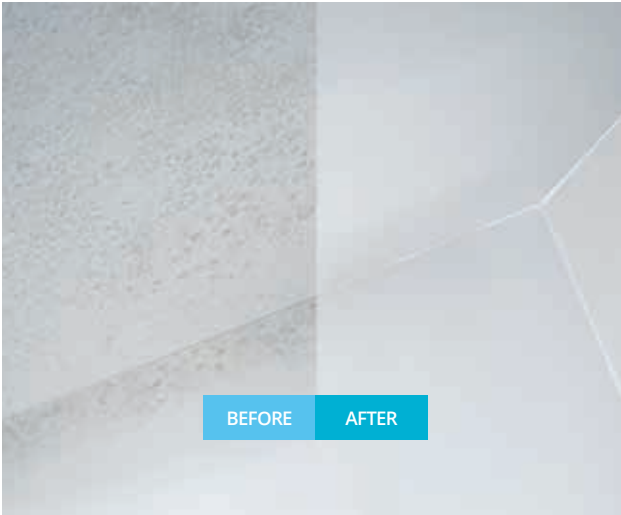


MOISTURE BARRIER
FACILITATES PAINTING



NOT FILM
FORMING

| | |
|----------------------|----------------------------|
| PERFORMANCE (1 coat) | 24-28 m²/L |
| DRYING (painting) | 6-12 hours |
| APPLICATION TOOLS | Brush, roller or spray gun |
| TOOLS CLEANING | Water |
| PRODUCT APPEARANCE | Liquid |



Minerseal

Premium

Mineral consolidation treatment for absorbent supports
CONSOLIDATES & PROTECTS THE SUPPORT



1L (Bottle) | 5L (Container) | 15L
Available formats

Minerseal Premium is a consolidating mineral treatment. Does not alter the permeability of the substrate to gases and water vapor. Protects mineral finishes such as plasters, exposed concrete, prefabricated concrete elements, calcareous sandstone... and also consolidates sandy or dusty supports.



HIGHLY
BREATHABLE

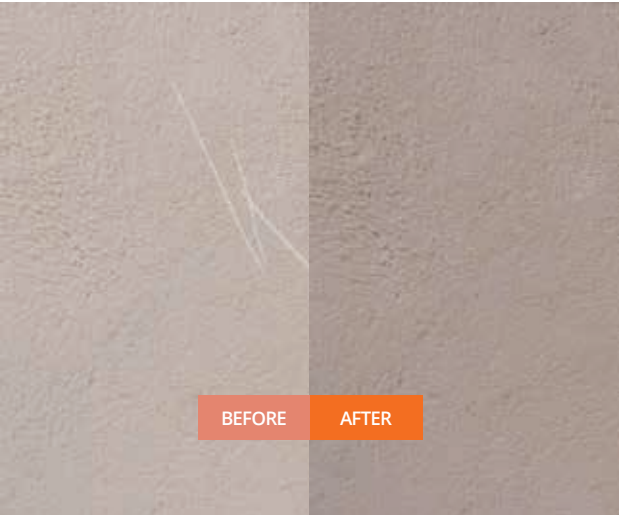


PROTECTS
MINERAL FINISHES



HIGH RESISTANCE
& DURABILITY

| | |
|----------------------|--|
| PERFORMANCE (1 coat) | 13-16 m²/L |
| TOTAL DRYING | 24 hours |
| APPLICATION TOOLS | Brush, roller or spray gun |
| TOOLS CLEANING | Water |
| APPEARANCE / FINISH | Whitish liquid / Colourless |
| APPLICATION SURFACES | Exposed or prefabricated concrete elements, calcareous sandstone, etc. |



0.75L | 4L

Available formats

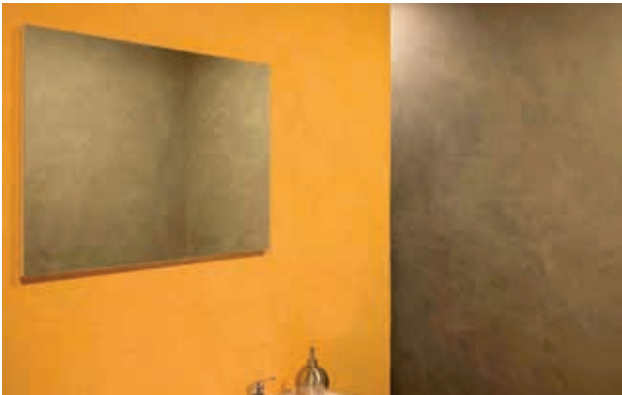
BeeWax Premium is a natural beeswax for the protection of lime stuccos and mortars coatings. It prevents the absorption of water and its contaminants without altering the permeability of the substrate to gases and water vapor. It also increases the brightness of the finishes.

NATURAL
BEEWAX
BASIS

NOT ALTER
THE BREATHABILITY
OF THE SUPPORT

PROTECTION OF
LIME STUCCO &
MORTARS

| | |
|------------------------|------------------------------------|
| PERFORMANCE (1 coat) | 30-40 m²/L |
| DRYING (between coats) | 24 hours |
| DRYING (mop polishing) | 30-60 min. |
| TOTAL DRYING | 24 hours |
| APPLICATION TOOLS | Sponge, trowel or short hair glove |
| TOOLS CLEANING | Water |
| APPEARANCE / FINISH | Cream / Colourless |
| APPLICATION SURFACES | Lime stucco & mortar |



Nature

PAINTS

Zennature
Natural paint for interiors

Housenature
Mineral paint for exteriors

TREATMENTS

WaterProof
Waterproof coating for roofs

GraffitiClear
Anti-graffiti coating

MORTARS

NaturMortar BASE
Natural hydraulic lime mortar

NaturMortar FINE
Natural hydraulic lime mortar

NaturMortar GLUE
Natural hydraulic lime adhesive mortar

Zennature

Natural paint with graphene
INTERIOR / EXTERIOR (UNDER ROOF)

White



1L | 4L | 12.5L | 15L
Available formats

Zennature is a natural paint with graphene technology and with a nice smooth matte finish. Ideal for application in construction and repainting. Also for decorating interiors and exteriors (under roof). It has a great whiteness, excellent coverage and is free of VOC emissions.

NATURAL PAINT
BREATHABLE

FREE OF
VOC EMISSIONS

SMOOTH
FINISH

| | |
|------------------------|--------------------------|
| PERFORMANCE (2 coats) | 5-8 m²/L |
| PERFORMANCE (1 coat) | 10-16 m²/L |
| DRYING (between coats) | 2-4 hours |
| TOTAL DRYING | 24 hours |
| APPLICATION TOOLS | Brush, roller or airless |
| TOOLS CLEANING | Water |
| COVERING POWER | Very good |
| WASHABILITY | Medium |
| FINISH | Smooth matte |
| COLOURS | White |



Housenature

Mineral paint with graphene
EXTERIOR / INTERIOR

White



1L | 4L | 15L
(1) Check colour availability (min. order 280L)

Housenature is a mineral paint with graphene technology and a pleasing mineral matte finish. Ideal for application in construction, restoration and repainting. Also for decorating facades. It has a great whiteness, excellent coverage and is free of VOC emissions.

MINERAL PAINT
BREATHABLE

FREE OF
VOC EMISSIONS

WEATHER
RESISTANT

| | |
|------------------------|-------------------------------------|
| PERFORMANCE (2 coats) | 5-8 m²/L |
| PERFORMANCE (1 coat) | 10-16 m²/L |
| DRYING (between coats) | 2-4 hours |
| TOTAL DRYING | 24 hours |
| APPLICATION TOOLS | Brush, roller or airless |
| TOOLS CLEANING | Water |
| COVERING POWER | Very good |
| WASHABILITY | Good |
| FINISH | Mineral matte |
| COLOURS | White / Check colours availability. |



WaterProof

Waterproof coating with graphene
ROOFS TREATMENT



1L | 4L | 15L
Available formats

WaterProof is a water-based waterproof coating with graphene technology for roofs treatments. Indicated to solve problems caused by leaks and/or accumulations of water. Penetrates into small fissures forming a continuous impermeable and elastic layer.

WATERPROOF
TO RAIN WATER

WEATHER
RESISTANT

HIGH ELASTICITY
ABRASION RESISTANCE

| | |
|-----------------------|-------------------------------------|
| PERFORMANCE (minimum) | 1L/m² per coat |
| TOTAL DRYING | 24 hours |
| APPLICATION TOOLS | Brush or roller |
| TOOLS CLEANING | Water |
| FINISH | Matte |
| APPLICATION SURFACES | Roofs |
| COLOURS | <div> RED GREEN GREY WHITE</div> |



GraffitiClear

Anti-graffiti coating
VERTICAL SURFACES



1L | 2.5L | 4L | 5L | 12.5L | 15L
Available formats

GraffitiClear is a hydrophobic and oleophobic water based product intended for the protection of vertical surfaces. Avoid that graffiti, graffiti, stains, fats... from bonding to surfaces.

NOT ALTER
THE BREATHABILITY
OF THE SUPPORT

EXCELLENT
WATER-REPELLENT
POWER

HIGH
OLEOPHOBIC
POWER

| | |
|------------------------|---|
| PERFORMANCE | 250-350 g/m² |
| DRYING (between coats) | 10-15 min. |
| TOTAL DRYING | 5 days (total curation) |
| APPLICATION TOOLS | Brush, roller or spray gun |
| TOOLS CLEANING | Water |
| PRODUCT APPEARANCE | Whitish liquid |
| FINISH | Transparent |
| APPLICATION SURFACES | Vertical porous surfaces such as terracotta, marble, mortar, concrete or similar. |



NaturMortar BASE

Natural hydraulic lime mortar
COARSE FINISH



25 Kg
Available formats

NaturMortar Base is a natural mortar based on hydraulic lime powder, free from artificial hydraulics additives. Ideal for rendering, grouts in new work, rehabilitation and restoration of buildings. It is used as a gripping mortars and/or first regulation coat as it contains coarse aggregates.

Rendering grouts and as a first regulation coat in rehabilitation, restoration and new works.



BREATHABLE
ABSORBS CO₂



GOOD
WORKABILITY



GOOD
MECHANICAL
RESISTANCE

| | |
|-----------------------------|--------------------------------------|
| PERFORMANCE (1 cm) | 20-23 Kg/m ² |
| DRYING (as gripping mortar) | 3-4 hours |
| DRYING (between coats) | 24-48 hours |
| APPLICATION TOOLS | Brush, trowel or projecting machine. |
| TOOLS CLEANING | Water |
| FINISH | Coarse |
| COLOURS | Off white |



NaturMortar FINE

Natural hydraulic lime mortar
FINE FINISH



25 Kg
Available formats

NaturMortar Fine is a natural mortar based on hydraulic lime powder, free from artificial hydraulics additives. Ideal for plastering in new building, rehabilitation and restoration of buildings. It is used to leveling, scraping, unifying and/or give a medium grain finish on rendering.

Plastering and smooth finishes in rehabilitation, restoration and new works.



BREATHABLE
ABSORBS CO₂



GOOD
WORKABILITY



GOOD
MECHANICAL
RESISTANCE

| | |
|------------------------|---------------------------|
| PERFORMANCE (1 cm) | 15-16 Kg/m ² |
| DRYING (between coats) | 24-48 hours |
| DRYING (finishing) | 4 days |
| APPLICATION TOOLS | Trowel. Finishing trowel. |
| TOOLS CLEANING | Water |
| FINISH | Fine |
| COLOURS | Off white |



NaturMortar GLUE

Natural hydraulic lime adhesive mortar
ADHESIVE REPAIRING MORTAR



25 Kg
Available formats

NaturMortar Glue is an adhesive natural mortar based on hydraulic lime powder, free from artificial hydraulics additives. Ideal for bonding tiles, ceramics and as a anchor for insulation boards (EIFS) and non-flooding solutions. Also for rehabilitation and resortation of historical buildings.

Bonding tiles, ceramics and as a anchor for insulation boards (EIFS) in rehabilitation, restoration and new works.



BREATHABLE
ABSORBS CO₂



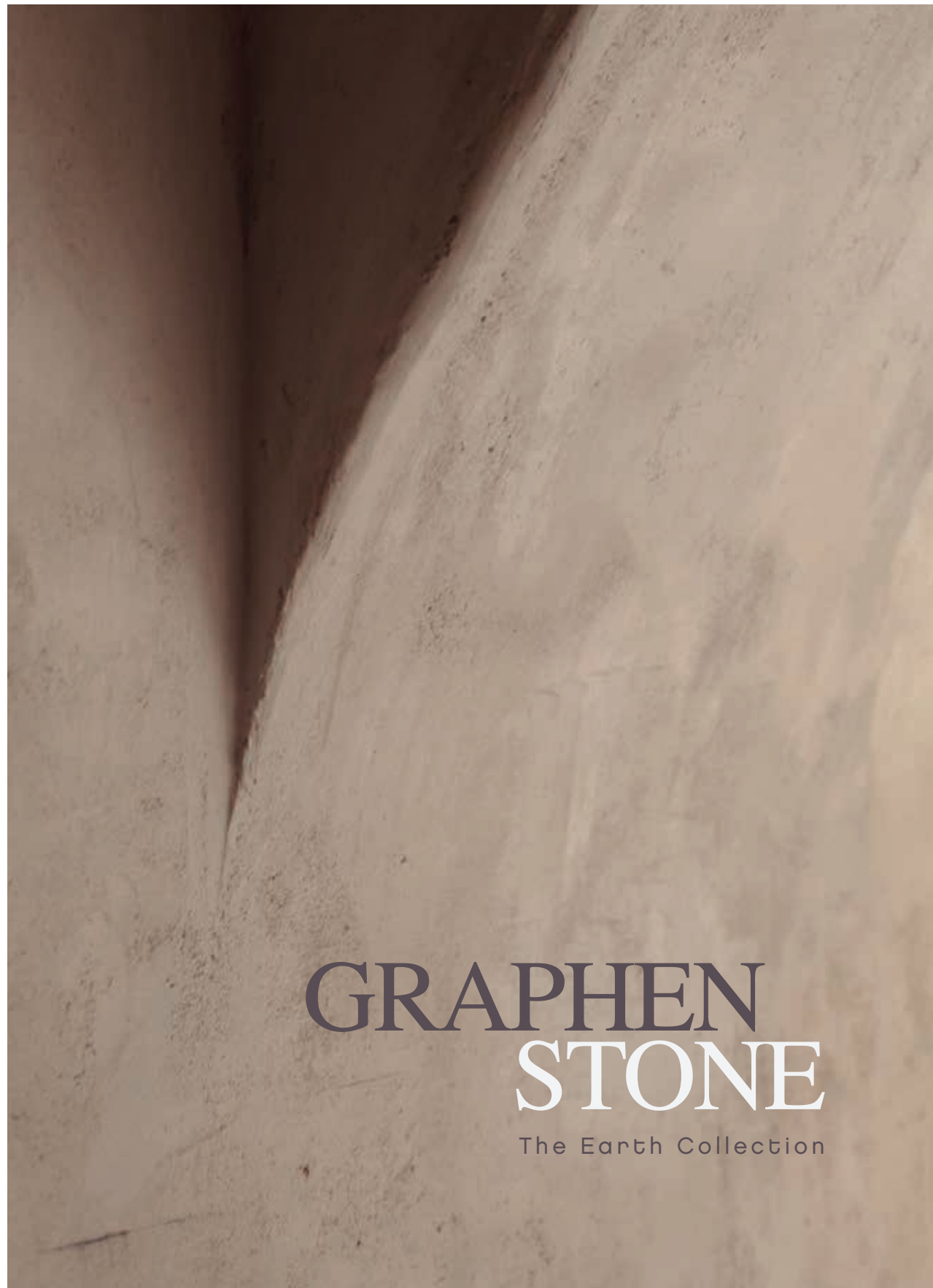
GOOD
WORKABILITY



GOOD
MECHANICAL
RESISTANCE

| | |
|------------------------|--------------------------|
| PERFORMANCE (5 mm) | 3.5 kg/m ² |
| DRYING (between coats) | 24-48 hours |
| DRYING (finishing) | 4 days |
| APPLICATION TOOLS | Trowel or notched trowel |
| TOOLS CLEANING | Water |
| COLOUR | Sand |





GRAPHEN STONE

The Earth Collection

GRAPHENSTONE

THE ORIGINAL & AUTHENTIC

The texture of lime has value, the beauty of lime is reflected in the nuances that appear during its application, the traces of the spatulas, of the trowels, the irregularities that are recognizable by sight and touch, arousing a sensory experience.

The colors of the earth are essential to the origins of Graphenstone. The light sand tone that creates the lime in mixture with the aggregate is one of those that expresses best our identity.

From these concepts we have developed a 16-colour chart based on the tonalities of the earth and of 8 different textures that merge with our design concept.

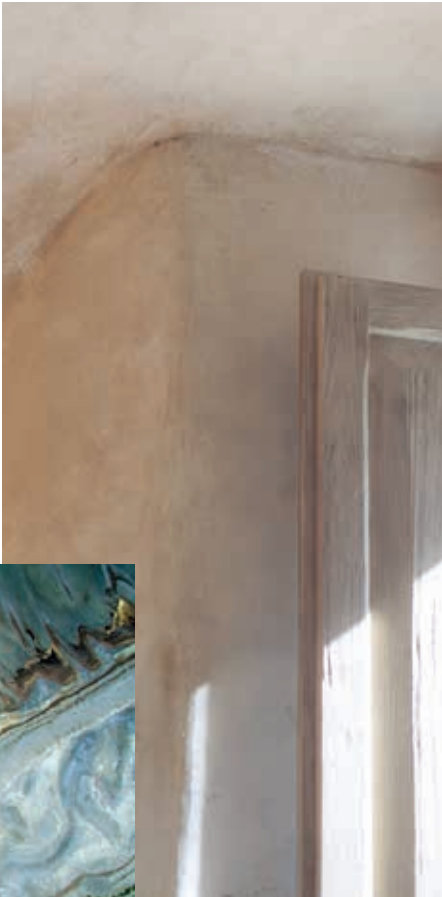
The Earth Collection

Health

Naturalness is accompanied by health care. Graphenstone produces materials that help to live better and make our home a healthy environment, away from the harmful components of conventional plastic products.

Sustainability

A range of products that are as eco-friendly as they are healthy and free of harmful substances. Our goal is to achieve the well-being of people and the positive impact on the environment.



Nature

As natural as a second skin of each person in their home. Familiar spaces are created and at the same time distant through the continuity of the material in the walls, floors and ceilings... Familiar yet different spaces are created through the continuity of the material in the walls, floors and ceilings; surrounding, cozy and pure spaces.

Timelessness

Looking for permanence in time, Graphenstone coatings endure beyond the ephemeral fashions and planned obsolescence; always getting architectural spaces.

Beauty

The beauty of lime is reflected in the nuances that appear during its application, the marks of the spatulas, the trowels, the irregularities that are recognizable by sight and touch, producing a sensory experience.

Technology

The innovation with graphene fibers has been the fundamental axis of the birth of Graphenstone materials. Thirst and the desire to reach the unexplored and a product that nobody had imagined before.

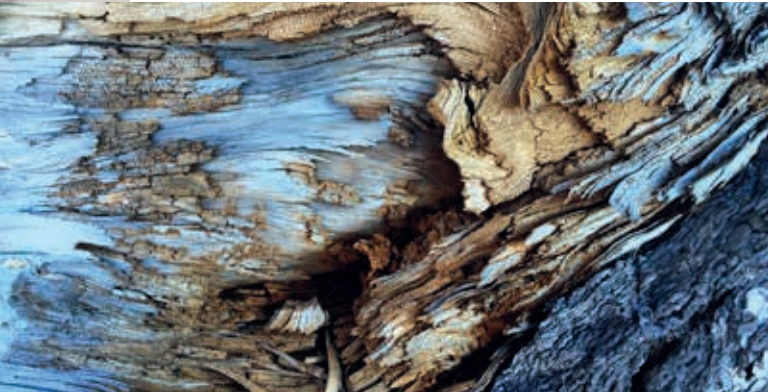


Artisanal

Graphenstone products are created looking for the artisan origin and the good work of past generations. The lime used is selected by hand and cooked in a wood oven in a millennial process and with a sustainable life cycle.

Wabi-sabi

Wabi-sabi is a Japanese aesthetic term that describes a type of aesthetic vision based on “the beauty of imperfection”. Combining attention to the composition of minimalism, with the warmth of objects from nature.



GRAPHEN STONE

The Earth Collection

The Earth Collection

PRODUCTS

Siena

Natural paint

Venetta

Venetian stucco

Modena

Continuous natural coating

Firenzza

Natural coating
for textured finishes

Ferrara V

Vertical lime coatings
protector

Ferrara H

Horizontal lime coatings
protector

Arezza

Decorative kit for woods

COLLECTION

The Colours.

A selection of 16 colors inspired by Mother Earth that evoke the primary origins of nature: earth, sand, water, stone and the passage of time on it.

Textures.

A selection of 8 textures that reflect the traces of efforts and the beauty of imperfection over spaces.

Shadows.

A selection of 4 varnishes for wood created to travel through time.
A fossil finish designed to protect while embellishing.

Siena

Natural lime base paint for interiors
NATURAL MATTE FINISH



15L | 4L | 0.75L

Natural paint for interiors with a matte finish, ideal to decorate with criteria of bio-habitability and environmental sustainability thanks to its mineral base and its graphene technology.

| | |
|------------------------|--------------------------|
| PERFORMANCE (2 coats) | 6-9 m²/L |
| PERFORMANCE (1 coat) | 12-18 m²/L |
| DRYING (between coats) | 2-4 hours |
| TOTAL DRYING | 24 hours |
| APPLICATION TOOLS | Brush, roller or airless |
| TOOLS CLEANING | Water |
| FINISH | Natural matte |
| COLOURS | The Colours of the Earth |



Breathable
Absorbs CO₂



Free of VOC
emissions



Resistant &
Durable



Graphene
Technology



High Quality
Lime Base



Interior

Pigmentation

| | | |
|-------------|--------------|---------------|
| Siena 15L | x4 u. 250ml | Liquid Toner* |
| Siena 4L | x1 u. 250 ml | Liquid Toner* |
| Siena 0.75L | x1 u. 50 ml | Liquid Toner* |



*This product is sold separately

Venetta

Natural venetian stucco lime coating
MATTE OR GLOSS FINISH



15L (bi-material) | Kit 4L (bi-material)

Natural venetian stucco coating for exterior and interior, with high decoration finish, artisanal lime and graphene technology. It allows an easy application with trowel and a great shine. Ideal for high decoration works, restoration or rehabilitation. This product can be finished in gloss or matte finish.

| | |
|------------------------|---|
| PERFORMANCE (2 coats) | 4-5 m²/L |
| DRYING (between coats) | 30 min. |
| POLISHING (by hand) | 30-40 min. |
| POLISHING (by machine) | 60-90 min. |
| TOTAL DRYING | 24 hours |
| APPLICATION TOOLS | Stucco trowel, electric polisher (optional) |
| TOOLS CLEANING | Water |
| GET A MATTE FINISH | Sand lightly |
| GET A GLOSSY FINISH | Polishing manually or with an electric polisher |
| COLOURS | The Colours of the Earth |



Breathable
Absorbs CO₂



Free of VOC
emissions



Resistant &
Durable



Graphene
Technology



High Quality
Lime Base



Interior
Exterior

Pigmentation

| | | |
|----------------|--------------|---------------|
| Venetta 15L | x4 u. 250ml | Liquid Toner* |
| Venetta Kit 4L | x1 u. 250 ml | Liquid Toner* |



*This product is sold separately

Modena

Continuous natural coating
WALLS & FLOORS



15.75Kg Bi-material | 4Kg Bi-material

Continuous coating for exterior and interior of air lime and graphene technology. It is applied as a finish on previously plastered walls. Highly breathable and mineral nature, it can be treated as a continuous material allowing the same finish on walls and floors. It is served in bi-material format (2 products), with a mechanical mixing that gives it a smoothness that facilitates its application with trowel, for a natural finish, smooth and with own effects of lime materials.

| | |
|---|---|
| PERFORMANCE (2-3 mm) | 5 Kg/m² |
| DRYING (between coats) | 24-48 hours |
| TOTAL DRYING | 4 days |
| DRYING (pedestrian traffic) | 7 days |
| APPLICATION TOOLS - Preparation - Application - Finish | Mechanical mixer, bucket. Trowel / Finishing: trowel. Finishing trowel. |
| TOOLS CLEANING | Water |
| COLOURS | The Colours of the Earth |



Breathable
Absorbs CO2



Free of VOC
emissions



Resistant &
Durable



Graphene
Technology



High Quality
Lime Base



Interior
Exterior

Pigmentation

| | | |
|-----------------|-------------|----------------|
| Modena 15.75 Kg | x4 u. 250ml | Solid Pigment* |
| Modena 4Kg | x1 u. 250ml | Solid Pigment* |



*This product is sold separately

Firenzza

Natural mortar for textured finishes
TEXTURED FINISHES



17Kg Bi-material | 4Kg Bi-material

Aerial lime mortar with graphene technology used on walls. This material is highly flexible and resistant, ideal for creating highly decorative textures. Each texture presents a specific technique (The Textures of the Earth): All these applications are specified in their respective data sheet. It is served in bi-material format (2 products), with a mechanical mixing that gives it a smoothness that facilitates its application.

| | |
|------------------------|---------------------------|
| PERFORMANCE (2-3 mm) | 3 Kg/m² |
| DRYING (between coats) | 24-48 hours |
| TOTAL DRYING | 4 days |
| APPLICATION TOOLS | Depends on texture |
| TOOLS CLEANING | Water |
| TEXTURE CREATION | The Textures of the Earth |
| COLOURS | The Colours of the Earth |

Create your texture inspired on the earth:
www.graphenstone.com/Texturas/ENG.pdf



Breathable
Absorbs CO2



Free of VOC
emissions



Resistant &
Durable



Graphene
Technology



High Quality
Lime Base



Interior
Exterior

Pigmentation

| | | |
|---------------|-------------|----------------|
| Firenzza 17Kg | x4 u. 250ml | Solid Pigment* |
| Firenzza 4Kg | x1 u. 250ml | Solid Pigment* |



*This product is sold separately

Ferrara

Lime coating protector
VERTICAL / HORIZONTAL SURFACES

Ferrara V
VERTICAL
SURFACES



Ferrara H
HORIZONTAL
SURFACES



4.75L (4L + 0.75L) Bi-material

Colourless polyurethane water-based varnish with matte finish. It is a sealing layer for lime coating walls protection (Ferrara H) and floors (Ferrara V) made with lime coatings. It is served in bi-material format (2 products).

| | |
|----------------------------|--|
| PERFORMANCE (per coat) | 120g/m ² (Ferrara V) |
| PERFORMANCE (per coat) | 130g/m ² (Ferrara H) |
| DRYING (to touch) | 2-3 hours |
| DRYING (between coats) | 4-6 hours |
| DRYING (furniture placing) | 24 hours |
| TOTAL DRYING | 4 days |
| APPLICATION TOOLS | Electric stirrer or other suitable equipment. Brush and short pile roller |
| - Preparation | |
| - Application | |
| TOOLS CLEANING | Warm soapy water |
| FINISH | Silky matte |



Low odour



Low in VOC emissions



Resistant & Durable



Washable



UV-Rays Resistant



Surfaces with lime coatings



Water-base



Ferrara V Walls



Ferrara H Floors

Kit Arezzo

Decorative kit for woods
WOOD FINISHES



Kit 6L = 0.75L + 1L + 4L

Arezzo is a protective kit to obtain high decoration finishes for wood such as fossilized or aged effect. The kit consists of the following products:

Patina (A): ecological natural patina in lime base.

Shade* (B): varnish (shade available in 4 tonalities) that gives tonality to wood. This type of product is used to obtain natural and decorative finishes for wood.

Protector (C): water-based polyurethane varnish. Highlights the beauty of the wood without altering the tonalities and contrasts of the grain. Guarantees excellent resistance to bumps, scratches and stains.

*Available shadows:



BÁLTICO

ADRIÁTICO

MEDITERRÁNEO

TIRRENO

3-STEPS APPLICATION:

(1o) Apply the PATINA diluted 1:1 by weight. Allow to dry 24 hours. (2o) Apply SHADOW diluted 1:1 by weight. Allow to dry 24 hours. (3o) Apply PROTECTOR undiluted. Allow to dry 24h for total drying.

| | |
|----------------------------|--|
| PERFORMANCE (Kit) | 24 m ² |
| DRYING (between products) | 24 hours |
| DRYING (furniture placing) | 7 days |
| APPLICATION TOOLS | Brush, roller or spray gun |
| TOOLS CLEANING | Water |
| FINISH | Matte |
| EFFECT | Aged / Fossilized |
| SHADOWS (4 shades) | Báltico, Adriático, Mediterráneo & Tirreno |



Odourless



Eco Friendly



Resistant & Durable



Fast dry



Easy to apply



Interior woods

The Colours of the Earth

Pigments & toners for paints and mortars.
Products: Siena, Venetta, Modena and Firenzza.



Liquid Toner formats: 250ml & 50ml (use with Siena & Venetta)
Solid Pigment format: 250ml (use with Modena & Firenzza)



The Textures of the Earth

Finishes for textured mortars.
Product: Firenzza.



Textures Tutorial

Discover how to create your texture:
www.graphenstone.com/Texturas/ENG.pdf

Quality

At Graphenstone we work to improve the quality of our products to exceed the most stringent national and international regulations.

We are committed to the environment which is why we produce natural materials. Among our values are ecology, nature, sustainability and respect for the environment. Our products meet the principles of a circular economy. Our DNA is to be an innovator and creator of ecological and respectful products for the people and the environment. Ultimately, we want the construction sector to serve humans and not the opposite way round.

Our philosophy: acting as a benchmark for other companies, complying with the requirements of green building through economic activity.



World's most
Certified Green
brand

Cradle To Cradle

Graphenstone has achieved Cradle to Cradle Certification, a key distinction in our products, worldwide.

Graphenstone has developed a product range with a whole green life cycle. It complies with the reuse, reduce and recycle philosophy, guaranteeing the most efficient use of materials. For that reason, Graphenstone meets the Cradle to Cradle certification programme requirements, obtaining the following levels of certification:



Cradle to Cradle Certified™
GOLD

Biosphere Premium
Ecosphere Premium
AmbientPro+ Premium
Stuki Premium
Kratzputz Premium
MortarBase Premium with Kalgraphin Premium
MortarFine Premium with Kalgraphin Premium
MortarSuper Premium with Kalgraphin Premium
Naturglue Premium with Kalgraphin Premium
Firenzza (material A & B)
Modena (material A & B)



Cradle to Cradle Certified™
SILVER

Ecosphere Colour Premium
Biosphere Colour Premium
AmbientPro+ Colour Premium
Stuki Colour Premium
Graphenstone ColorSystem GCS 980.
Graphenstone ColorSystem GCS 322.



“Graphenstone
eliminates any concept
of waste and becomes
a product with a green
life cycle.”



Material Health Certified™
GOLD

Biosphere Premium
Ecosphere Premium
AmbientPro+ Premium
Filler Premium
Stuki Premium
Kratzputz Premium

Global Green Tag

Graphenstone. Committed to the health of materials. Mineral paints and primers.

Global GreenTag is one of the world's most robust, trusted and widely recognised eco labels. We independently assure that every product is fitness tested and certified under one of our two leading certification programs that use world's best scientific methods.

That's why we have earned the reputation and trust of thousands of buyers, hundreds of companies and numerous green building councils, certification bodies and governments around the world.



Green Tag Certified™
Green Rate | LEVEL A



- Biosphere Premium
- Ecosphere Premium
- Stuki Premium
- AmbientPro+ Premium
- Kratzputz Premium



Green Tag Certified™
Health Rate | GOLD

- Biosphere Premium
- Ecosphere Premium
- Stuki Premium
- AmbientPro+ Premium



Global GreenTag
is one of the world's most
robust, trusted & widely
recognised ecolabels for
buyers and companies.

Asthma Friendly

Graphenstone – Free of VOC emission.
Mineral paints, renders and primers.

Graphenstone is the ultimate ecological range of products, composed of natural elements that purify the air we breathe inside our homes. It is suitable for people suffering from chemical intolerance and respiratory issues like asthma. Graphenstone is recommended for indoor enclosures, hospitals, nurseries, schools, or rooms for infants and children.



Sensitive Choice
APPROVED™

**Asthma friendly
products**

- Ecosphere Premium
- Biosphere Premium
- Ambient Pro+ Premium
- Stuki Premium
- Kratzputz Premium
- MortarBase Premium
- MortarFine Premium
- MortarSuper Premium
- Naturglue Premium
- Kalgraphin Premium

Sustainable Materials

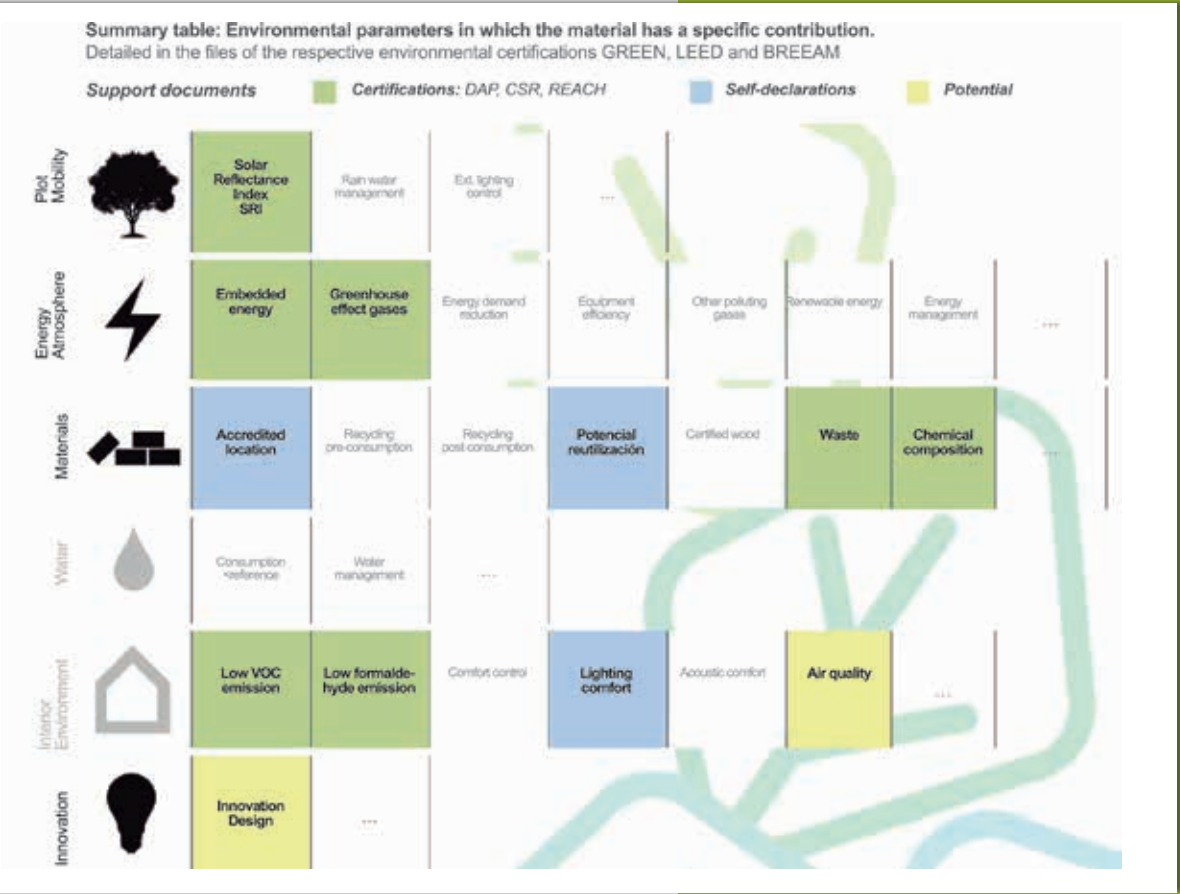
Graphenstone® lime based product contribute to the achievement of the certifications: LEED v4, LEED v2009 and BREEAM ES.

Mortars and paints with lime base. The porous nature of the lime ensures the breathability of the walls, avoiding humidity and creating safe and healthy environments.



FAMILY COMPONENTS:

- Biosphere Premium
- Ecosphere Premium
- AmbientPro+ Premium
- Filler Premium
- Stuki Premium
- Kratzputz Premium



More information:
www.materiales.gbce.es

Awards

The recognition of Graphenstone's work has been awarded around the world in categories such as: Innovation, Construction, Environment or Product Design.



"Business Quality"
European Association of Economy & Competitiveness. Spain - Dec. 2018



"Corporate Social Responsibility"
Andalucía Management Awards Spain- Nov. 2018



"Niche company of the year"
ACQ5 Global Awards - Jun. 2018



"Germany Trade & Invest Award for International Expansion"
European Business Awards Belgium - Apr. 2018



"Product design, Commercial & Industrial"
London Design Awards United Kingdom - Nov. 2017



"Gold Star"
Professional Excellence Award Spain - Nov. 2017



"Innovative Construction Solution of Spain"
Technology Awards - La Razón Spain - Nov. 2017



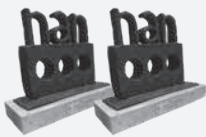
"The Best Sustainable Element"
Best Sustainable Element Award Denmark - Oct. 2017



"Environmental Commitment"
"Andalucía Excelente" Awards Spain - Oct. 2017



"Innovation product"
Green Interior Awards Australia - Jul. 2017



"Architecture & Construction"
IX NAN / XI NAN Awards Spain - Nov. 2015 y 2017



"Innovation & Sustainability in Construction"
Beyond Building Construmat. Spain - May. 2015

SHOWROOMS

The Gallery

INFORMATION & BOOKINGS
info@graphenstone.com

The Gallery, the essence of Graphenstone materialized in a showroom. A journey through tradition and innovation that is completed with a commercial space, where sustainable materials, textures and finishes are the protagonists.

A multisensory experience that appeals to the client's senses, who can appreciate, touch and feel the quality and properties that the brand offers.



SHOWROOMS

EcoBuilding

INFORMATION & BOOKINGS
info@graphenstone.com

A space concept for painters, applicators and decorators. Designed to bring new sustainable materials closer to the decoration and bio-construction sector.

A showroom created to learn first-hand works and emblematic projects made with Graphenstone's products.



Global

International Delegations

Europe:

Germany
Austria
Benelux
Spain
France
Italy
Portugal
UK
Switzerland
Ukraine

Asia & Oceania:

Australia
China
South Korea
Philippines
India
Japan
Malaysia
New Zealand
Singapore
Thailand
Vietnam

Middle East:

Turkey
Kuwait
United Arab Emirates
Qatar

North America:

U.S.
Canada

Central America:

Panama
Mexico

South America:

Bolivia
Chile
Colombia
Costa Rica
Ecuador
Peru

Africa:

Cameroon



Showrooms

Exhibition halls & Stores

The Gallery / Seville (Spain)
Bioconstruction & EcoBuilding / Seville (Spain)
Showroom-Store/ Macao (China)
Showroom Ontario / Ontario (Canada)

Factories

Production centers

Europe:

Seville (Spain)

Asia & Oceania:

China
Malaysia
Australia

Central America:

Panama



www.graphenstone.com



PAINTS FOR THE *green* GENERATION

Graphenstone Headquarters | IEdiSa, S.A.
Polg Ind Poliviso. Carpinteros, 25.
41520 El Viso del Alcor, Seville. España (Spain).
Phone: (+34) 955 529 435
info@graphenstone.com
www.graphenstone.com