

WICSOLAIRE

Solar shading system



» Directing daylight



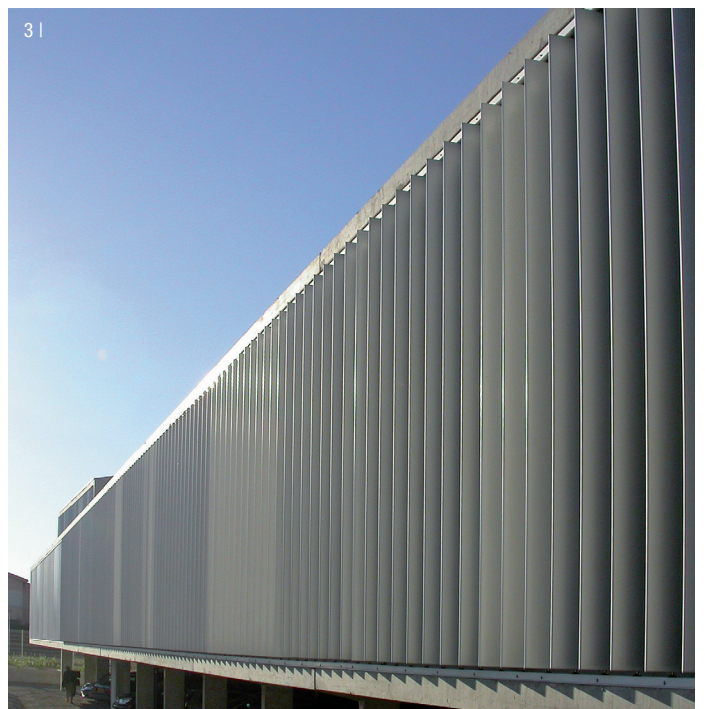
11



Small blades
Large blades
Integrated photovoltaics

Intelligent climate concepts

Modern architecture with extended glazed building skins offer increased energy gains from daylight, but require an external light control that aligns energy savings, user comfort and economy. WICSOLAIRE sunshading systems guide daylight in to the building and thus reduce the need for artificial light. They control the energy and heat input by solar radiation and reduce the need for air conditioning. The visual contact with the exterior remains and improves the sensation of comfort. As a passive technology WICSOLAIRE can be adapted in diverse options to the individual requirements and the architectural style of the building. In combination with the WICONA window and curtain wall systems a consistent solution is achieved. The blades can be oriented horizontally or vertically at different angles. The assembly can be made in a horizontal, sloped or vertical fixture. As an option the blades can be equipped with integrated photo-voltaic captors, offering an optimal orientation toward the sun for maximum efficiency.



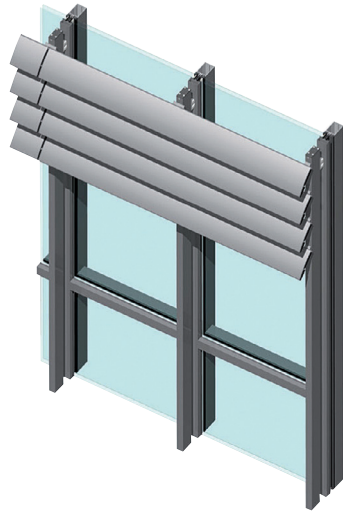
- 1 | University, Sigmaringen
Glück + Partner, Stuttgart
Heinrich Würfel Metallbau, Sontra
- 2 | Horizontal blades, application above the facade
- 3 | Vertical rotating blades, motorised
- 4 | Integrated photovoltaics

WICSOLAIRE
Blades 100 to 150

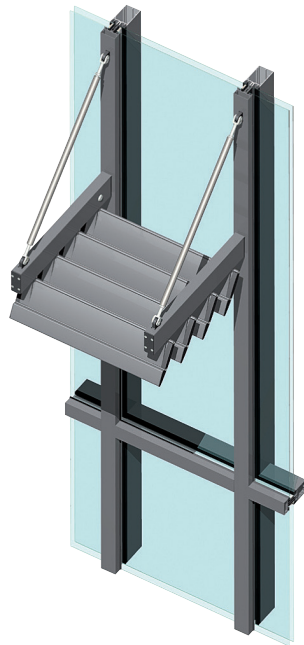
WICSOLAIRE Small blades

- Profile depth 100 or 150 cm
- Blade holders for fixture in 4 angles (15° / 30° / 45° / 60°)
- Application vertical, sloped or horizontal
- Orientation of the blades horizontally or vertically
- Easy assembly due to special fixture parts for every application

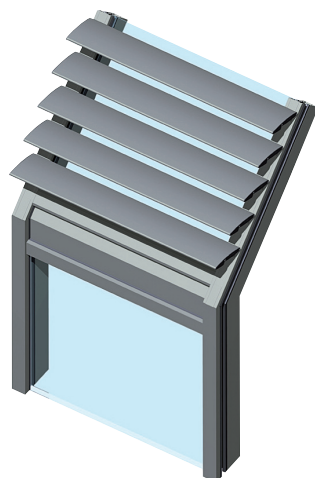




1 |



2 |



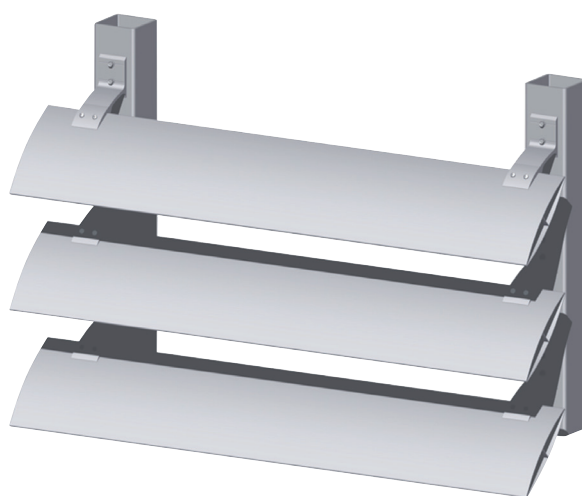
3 |

- 1 | Vertical application
- 2 | Horizontal application
- 3 | Sloped application

Large blades

WICSOLAIRE Large blades

The WICSOLAIRE large blades can be adapted in size, assembly application and orientation individually to each project's requirements. As a result they offer maximum freedom in architectural design. Whether horizontal or vertical orientation, fixture at angles from 0° to 45° or controllable motorisation: simply ask us for the best solution to your project.



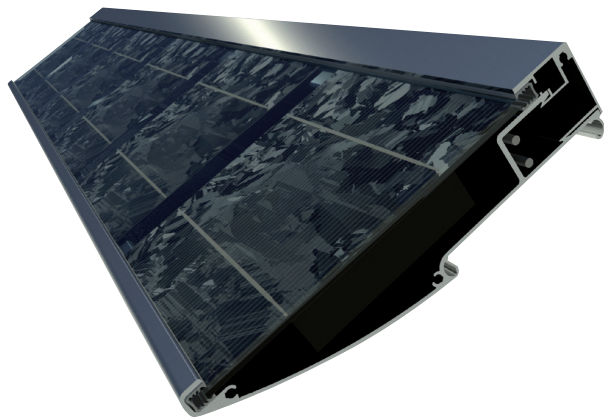
Large blades and integrated photovoltaic units are individual project solutions on demand. Please ask us for a personal consultation.



WICSOLAIRE with photovoltaic cells

The integration of photo voltaic units in WICONA sunshading turn a passive sunshading system into an active solar power station. The WICSOLAIRE blade module of 185 x 1200 mm can be oriented in various angles to the sun, so that a maximum energy efficiency is achieved.

**Integrated
photo voltaic**



North East Europe (NEE)**Hydro Building Systems GmbH**

Söflinger Straße 70

89077 Ulm

Telefon + 49 731 3984-0

www.wicona.de

North West Europe (NWE)**Hydro Building Systems S.a.r.l.**

Rue Jean-Baptiste Godin

Parc d'Activités Le Plateau

02200 Courmelles

Téléphone + 33 3 23 59 82 00

www.wicona.fr

South East Europe (SEE)**Hydro Building Systems S.p.A.**

Customer Service

Via Stazione 133/X

30035 Ballò di Mirano (VE)

Telefono + 39 041 51 38 633

www.wicona.it

South West Europe (SWE)**Hydro Building Systems****Southwest S LU**

Parque Empresarial Can Ametller

Edificios 1 y 2 Planta baja local

LA2

08190 SANT CUGAT

Teléfono + 34 902 22 23 23

www.wicona.es

International**Hydro Building Systems S.a.r.l.**

270 rue Léon Joulin

BP 63709

31037 Toulouse cedex 01

Téléphone + 33 5 61 31 26 26

www.wicona-int.com

