

A woman with blonde hair, wearing a grey knit dress and white socks, is sitting on a yellow sofa and reading a magazine. In the background, a white electric radiator is visible. The top of the image has a red banner with the Elnur logo and title.

ELNUR

ELECTRIC HEATING SOLUTIONS

2018 Edition

STORAGE HEATERS - ELECTRIC RADIATORS - ELECTRIC TOWEL RAILS - PANEL HEATERS - ELECTRIC BOILERS

Gabarrón
Manufacturing Excellence



Always by Your Side





Elnur is a leading electric heating products manufacturer with over 40 years of experience in manufacturing excellence.

With our products now sold in over 35 countries worldwide, Elnur is a global brand and continues to be one of the most progressive manufacturers in the industry.

Our philosophy is simple:

To manufacture the very best products we can, without compromise.

To create products that provide solutions for as many scenarios as possible.

To use innovative technologies to achieve the highest levels of product efficiency.

The Gabarrón brand is world renowned for providing our customers with energy efficient, controllable and affordable heating solutions to the highest quality standards.

Gabarrón
Manufacturing Excellence

Quality without compromise

Technology innovation

World renowned reliability

Emphasis on energy waste reduction

Compliance with the very latest regulations



ISO 9001



ISO 14001

“Let us invite you to meet ELNUR and experience the values and benefits that our GABARRÓN products will bring to your life.”

INDEX

STORAGE HEATING

- 6.- Ecombi HHR, high heat retention storage heaters
- 8.- Ecombi SSH, smart storage heaters with wifi control option
- 10.- ADL, Dynamic, Fan Storage Heater

ELECTRIC RADIATORS

- 12.- Introduction
- 14.- Radiators with G CONTROL SYSTEM
- 16.- Diligens Wifi controllable electric radiators
- 17.- Ingenium Wifi controllable electric radiators
- 18.- RFE Plus oil filled electric radiators
- 20.- RBC conservatory electric radiators
- 22.- RXE Plus dry technology electric radiators

PANEL HEATERS

- 21.- Introduction
- 25.- PH Plus digital panel heaters

TOWEL RAILS AND TOWEL WARMERS

- 26.- Introduction
- 27.- TBBK range
- 28.- TBC range

MATTIRA ELECTRIC BOILERS

- 30.- Introduction
- 34.- MATTIRA COMBI, Digital Modulating Electric Boiler, for heating and domestic hot water
- 38.- MATTIRA SYSTEM, Digital Modulating Electric Boiler, Heating Only

ELNUR CONNETED

- 42.- Mattira wifi controls

OTHER INFORMATION

- 46.- Website details, quality certifications & contact information



"Adapting to your needs"

STORAGE HEATING

FULLY COMPLIANT WITH “**SAP**” CATEGORIES “HIGH HEAT RETENTION STORAGE HEATERS” & “INTEGRATED STORAGE + DIRECT ACTING HEATER”

Ecombi **HHR**

HIGH HEAT RETENTION STORAGE HEATER

Ecombi **SSH**

SMART STORAGE HEATER



Ecombi HHR Benefits

- Single power supply capable.
- Charges the store overnight using low cost off-peak electricity.
- Elnurs' exclusive "IEM" (Integral Energy Manager) automatically adjusts charging to suit climate and demand on a daily basis.
- The Elnur "IEM" also manages the discharge to ensure that heat is available when needed.
- Fan assisted heat distribution to provide faster room warm-up times.
- Built-in on-peak emitter to provide temperature balance and supplement the stored heat as and when required.
- Temperature accuracy to within 0.1°C, resulting in less energy wasted from temperature setting overshoot, than any other storage heater.
- Industry leading 12 year warranty*.



Maximum control

Ease of use

Weekly or daily programming

High quality components

FULLY COMPLIANT WITH
SAP SPECIFICATION
CRITERIA FOR
"HIGH HEAT RETENTION
STORAGE HEATER"

The Ecombi HHR is the perfect electric heating product for:

- House Builders
- Developers
- Social Housing Providers
- Private Landlords
- Homeowners

The Ecombi HHR is also in the highest scoring product category for use within the **Energy Company Obligation Scheme**

Ecombi **HHR**

The Smartest Heating Manager

Technical Features

- ▶ High heat retention storage heater.
- ▶ IEM technology, the intelligent way to manage the charge and the discharge.
- ▶ Weekly and daily programming.
- ▶ Three levels of temperature: Comfort, Economy and Frost-protection.
- ▶ Open window detection for reduced energy waste.
- ▶ High quality insulation materials with low thermal conductivity.
- ▶ Double high heat retention materials in all sides of the storage heater.
- ▶ Temperature sensor with calibration option.
- ▶ Overheating protection on storage heating function.
- ▶ Safety thermostat with manual reset.
- ▶ Class I insulation.
- ▶ Storage heating elements made of stainless steel.
- ▶ Front, side and rear air isolating chambers.
- ▶ Storage core made of a specially designed material for Ecombi HHR.
- ▶ Steel structure powder coated in epoxy RAL 9010.
- ▶ Robust thermoplastic fittings.
- ▶ Easy to install on any kind of wall.
- ▶ Very intuitive keyboard with lock option.
- ▶ Compatible with two-period off peak electric tariff in a single 24-hour interval.



- ✓ Unrivalled 12 Year Warranty
- ✓ Fully Programmable
- ✓ 0.1°C Thermostat Accuracy
- ✓ Smart IEM Technology
- ✓ Intuitive, easy to use controls
- ✓ Affordable
- ✓ Controllable
- ✓ Energy efficient



| | | ECOHR20 | ECOHR30 | ECOHR40 |
|----------------------------|-----|---------|---------|---------|
| Balancing element output** | W | 550 | 820 | 1100 |
| Storage heater output** | W | 1742 | 2613 | 3484 |
| Charge period | | 7h. | 7h. | 7h. |
| Charging (7h) | kWh | 12.2 | 18.3 | 24.4 |
| Connection | | 240 V~ | 240 V~ | 240 V~ |
| Frequency | Hz | 50-60 | 50-60 | 50-60 |
| Length | cm | 72 | 95 | 117 |
| Height | cm | 76 | 76 | 76 |
| Width | cm | 19.5 | 19.5 | 19.5 |
| Weight | kg | 97 | 140 | 183 |
| Num. of blocks 6kg | | 12 | 18 | 24 |

**Storage heater elements and balancing element will never operate at the same time.

*Full warranty terms & conditions available at www.elnur.co.uk

Ecombi SSH Benefits

- Single power supply capable.
- Charges the store overnight using low cost off-peak electricity.
- Elnurs' exclusive "IEM" (Integral Energy Manager) includes a Smart Charge Control and automatically adjusts charging level to suit climate and demand on a daily basis.
- Three possible operating modes. With the Auto operating mode, maximum comfort and energy savings can be achieved with Ecombi SSH.
- Fully programmable. Built-in weekly and daily programmer with three level temperature selector: Comfort, Eco and Frost-protection.
- Internet controllable option. The G Control System has been incorporated in the IEM electronics to allow wireless control and operation of the storage heater from anywhere and at any time via an internet connection.
- Built-in balancing heating element to provide faster room warm-up times and supplement the stored heat as and when required.
- Open window detection function to reduce energy waste.
- Adaptive start control function to guarantee maximum comfort at the desired time.
- Temperature accuracy to within 0.1°C, resulting in less energy wasted from temperature setting overshoot, than any other storage heater.
- New LCD screen to show multiple information, including the current level of charge of the storage heater at any time.



Maximum control

Ease of use

Totally silent

High quality components

FULLY COMPLIANT WITH **SAP** SPECIFICATION CRITERIA FOR
"INTEGRATED STORAGE + DIRECT ACTING HEATER"

The Ecombi SSH is the perfect electric heating product for:

- ✓ House Builders
- ✓ Developers
- ✓ Social Housing Providers
- ✓ Private Landlords
- ✓ Homeowners



Ecombi SSH

Smart Storage Heater



Ecombi SSH
control panel



G Control Hub



Technical Features

- ▶ Digital Smart Storage Heater.
- ▶ IEM technology, the intelligent way to manage the charge and the discharge.
- ▶ Built-in weekly and daily programming.
- ▶ Three levels of temperature: Comfort, Economy and Frost-protection.
- ▶ Internet controllable. Wireless control and operation with the G Control System.
- ▶ Open window detection for reduced energy waste.
- ▶ Adaptive start control.
- ▶ Proximity detection using G Control location system.
- ▶ High quality insulation materials with low thermal conductivity.
- ▶ High quality insulation materials in all sides of the storage heater.
- ▶ Temperature sensor with calibration option.
- ▶ Overheating protection on storage heating function.
- ▶ Balancing heating element made of aluminium.
- ▶ Safety thermostat with manual reset.
- ▶ Class I insulation.
- ▶ Storage heating elements made of stainless steel.
- ▶ High density heat retention blocks.
- ▶ Front, side and rear air isolating chambers.
- ▶ Steel structure powder coated in epoxy RAL 9010.
- ▶ Robust thermoplastic fittings.
- ▶ Easy to install on any kind of wall.
- ▶ Intuitive LCD display with advance control options.
- ▶ Compatible with two-period off peak electric tariff in a single 24-hour interval.
- ▶ G Control Hub switchboard is required for the wireless control and operation of the storage heater.
- ▶ New amazon alexa features compatible with G Control System.

| MODEL | | ECOSSH158 | ECOSSH208 | ECOSSH308 | ECOSSH408 |
|-----------------------------------|----------------|---------------|---------------|---------------|---------------|
| Balancing element output** | 230 / 240 V~ W | 450 / 490 | 600 / 653 | 900 / 980 | 1200 / 1307 |
| Storage heater input** | 230 / 240 V~ W | 975 / 1062 | 1300 / 1415 | 1950 / 2123 | 2600 / 2831 |
| Charge period | | 7.6 -7h | 7.6 -7h | 7.6 -7h | 7.6 -7h |
| Charging (7h) | kWh | 7.4 | 9.9 | 14.9 | 19.8 |
| Length | cm | 55 | 66 | 89 | 111 |
| Height | cm | 73 | 73 | 73 | 73 |
| Width | cm | 18 | 18 | 18 | 18 |
| Weight | kg | 59 | 77 | 112 | 147 |
| Num. of blocks (No.11016) 7.5 kg | | - | 8 | 12 | 16 |
| Num. of blocks (No.11072) 11.5 kg | | 4 | - | - | - |
| EAN13 | | 8432336111167 | 8432336111181 | 8432336111204 | 8432336111228 |

**Storage heater elements and balancing element will never operate at the same time.
*Full warranty terms & conditions available at www.elnur.co.uk

ADL Storage Heater Benefits

✓ Customer satisfaction

The ADL fan assisted heater is easy to install, easy to use, provides excellent performance and has lower running costs than traditional slimline storage heaters which, makes it a winner for both installer and customer alike.

✓ Higher heat outputs

The ADL range largest model is 4kW, giving it the greatest capability to heat poorly insulated properties or larger rooms with fewer heaters, than other heater types available.

✓ Output control options

With an ADL storage heater, you can choose the output control option that best suits your individual needs.



WIRELESS DIAL THERMOSTAT

Undoubtedly, the perfect solution for controlling ADL storage heaters! Purchase one complete pack which includes a battery operated, wireless dial room stat and a receiver unit which is wired into the ADL heater. Then, purchase a receiver unit only for each subsequent ADL heater in the property. All receivers are then linked to the single room stat for central control of the entire storage heater installation (maximum 6 receivers per stat). This then provides the user with an easy-to-use and understand control of their home heating.



WIRELESS DIGITAL ROOM STAT

Using exactly the same installation methodology as the wireless dial room stat, this provides a more modern digital room stat which is preferred by some clients.

Wireless Programmable Digital Room Stats are also available (by others) as an option if preferred.



MECHANICAL ROOM STAT

Mechanical room stats offer the most simplistic and inexpensive control solution. These would normally be installed on the basis of one per heater. No power is required to install a mechanical room stat with an ADL storage heater, simply wire a 2-core flex from the stat to the heater.

Most commonly with retro-fit installations, the cable between the heater and room stat is installed in mini-trunking.





ADL

Dynamic, Fan Storage Heater

Designed to use the low cost off-peak electricity rates

Technical features

- ▶ Designed to use Off-Peak electricity.
- ▶ Efficient solution to obtain constant heat when it is required during 24 hours a day.
- ▶ Low speed silent fan.
- ▶ Hot air/fresh air mixer with thermostat for a homogenous air output.
- ▶ Precise control over the released heat.
- ▶ Charging thermostat with sensor tube.
- ▶ Safety thermostat with manual reset.
- ▶ Class I insulation.
- ▶ Single or three phase connection.
- ▶ Microtherm G 25 mm insulation.
- ▶ Vermiculite and ceramic fibre insulations.
- ▶ Front and side air chambers.
- ▶ Powder coated RAL 9010 steel structure.
- ▶ Fan output requires an external thermostat (not supplied)

Fan assisted storage heaters offer greater levels of insulation than traditional standard storage heaters and have a larger internal air chamber which also houses a fan for operation. These heaters have an input control to regulate the charging capacity but, the output is regulated by an external control such as a room thermostat.

The fan assisted storage heater will emit a low amount of "background" heat naturally but, is designed to release the stored heat on demand by means of the external thermostat which activates the fan, to project the heat into the room quickly.

This type of heater provides a fantastic solution for users who want to dictate when the stored heat is released and desire a quick response in terms of projecting that stored heat into the room.

| MODEL | | ADL-2012 | ADL-3018 | ADL-4024 |
|------------------------|-----|---------------|---------------|---------------|
| Input 230 V / 240 V | W | 2000 / 2178 | 3000 / 3267 | 4000 / 4355 |
| Accumulated energy | kWh | 16 | 24 | 32 |
| Length | cm | 63 | 81 | 99 |
| Width* | cm | 24 | 24 | 24 |
| Height | cm | 66 | 66 | 66 |
| Total weight | kg | 117 | 167 | 215 |
| Number of Blocks 7.1kg | | 12 | 18 | 24 |
| Frequency | Hz | 50 | 50 | 50 |
| EAN 13 | | 8432336200458 | 8432336200465 | 8432336200472 |

*Plus 2cm space from the wall





THERMAL INERTIA RADIATORS

GABARRÓN ranges of Thermal Inertia Radiators use two different types of technology: EcoFluid based on an optimum thermal inertia and heat transfer through a low viscosity and environmentally friendly thermo fluid, and EcoSeco Technology, a real innovation in heat transference based on a primary core and a secondary heat amplifier.

The high quality aluminium elements design, allows a natural convection of air through the radiator, providing perfect heat distribution, radiation and a thermal inertia that ensures very low running costs.

The real core of these devices, however, is their Electronic Triac Control Optimiser (ETCO). This manages and restricts the flow of electricity to guarantee low consumption.

Each radiator incorporates a highly accurate ambient thermostat ($\pm 0.1^{\circ}\text{C}$ precision), that provides the best temperature control and reduces electricity consumption by minimising waste through temperature over-shoot.

Every detail is considered, right down to the patented and uniquely designed wall fixing brackets which allow the radiator to be installed and levelled simply in no more than 5 minutes.

These five ranges all provide built-in programming to benefit users with total control over time and temperature - hour by hour and day by day functions can be set up on Comfort, Eco and Frost Protection modes.

For the ultimate in control, our Diligens and Ingenium ranges also provide wifi connectivity to allow control on a smartphone, tablet, laptop or desktop, from anywhere in the world via an internet connection.

With five ranges to choose from in different stylish aesthetic designs, there is always an Elnur radiator to suit your needs.

Five ranges to choose from
High quality components and finish
Industry leading warranties
Outputs from 500W to 2000W
Maintenance free

Gabarrón
Manufacturing Excellence

RADIATORS with G CONTROL SYSTEM

Control and management of heating via WiFi, from any place and at any time

The G Control System has been incorporated in the electronics of the new Diligens and Ingenium range of radiators to give you access to and total control over your radiators, from any place and at any time, via an Internet connection. It has never been so easy to achieve maximum comfort and management of your heating, as the temperature in your home and your electrical consumption can be controlled at all times.

The G Control system comprises four key components to offer maximum control and savings:

1. G Control Receiver integrated into the electronics of each Diligens and Ingenium radiator.
2. G Control Hub – 1 required per average domestic property (up to 30 appliances per hub).
3. The ELNUR WIFI CONTROL App – FREE Download.
4. Optional – The G Control PM (Power Meter).

As standard, each installation using the G Control system will allow users to access all of the functions and make modifications as required. Additionally, users can instantly access information

about radiator consumption and historic use.

With the optional G Control PM, users can also access consumption and historic use for all the electrical consumption in the property.

Users can establish the total available power and, if there is a precise moment of high consumption by other electrical equipment, you can set operating priorities for your heating equipment.

The G Control System from Elnur provides 24/7 access from any mobile device, tablet or PC.

The ELNUR WIFI CONTROL App is free and simple to download with versions available in IOS, Android and Webapp formats.

Each G Control Hub can manage up to 30 separate appliances. For larger applications, more than one hub may be required and therefore, users can allocate an unlimited number of hubs to the same account, if required.



Use of App with easy and intuitive control

To access and control the heating equipment, we have created the ELNUR WIFI CONTROL App from Gabarrón. It is a straightforward and intuitive App which offers quick access to all the information and programming of the equipment. From any mobile device, tablet or PC, users can access their heating equipment and make all the checks and changes needed.



Switch on, modify and switch off the heating instantly from anywhere

Resulting from the communication strength between the G Control Hub and the G Control System integrated in the electronics of the radiators, you can access your heating from anywhere via an Internet connection and manage operations in real time.

The ability to switch on, switch off, alter the program, change the set-point temperatures or the operating mode of the radiators are just some of the many advantages offered by the system.



Registration of additional equipment or control of second homes

If you acquire more equipment for other rooms, you can easily and quickly, add new radiators to the App.

Furthermore, the App allows you to register more than one home, allowing users to link the radiators by room name for each property. You can also allocate them their own program and set-point temperatures, for a maximum of 30 devices per home.



Reading of whole household electrical consumption

With the addition of the G Control PM (power meter), users can access the consumption information for the whole household in real time, including all electrical equipment in stand-by mode. This additional feature enables users to make decisions in real time about the consumption and operation of their heating equipment. In-turn, this can help you to economize on your daily consumption and achieve significant savings at the end of the winter season.



Access to electrical consumption history

Consumption history is an important function to bear in mind and is a standard built-in feature on the Elnur Wifi Control App. This provides information about the consumption of each individual Elnur radiator per day, week and year.

Users can use this information to obtain comparisons between the same periods from one year to another. Additionally, for users of the optional G Control PM, comparisons can also be obtained for the entire household.



Electrical consumption energy manager for reliable savings

With the G Control PM installed, the power controller on the App allows users to input the maximum load for their property and set priority for their heating appliances. When the system detects consumption very close to or above the maximum load, it will determine which piece(s) of equipment should be disconnected automatically, depending on the priority established for each one. In the case of equipment earmarked as having equal priority, the system will take into consideration the difference in temperature compared to the set-point one to establish which rooms have more or less need for heat.

By closely monitoring the power used by each electric radiator and the total consumption of the household, the power controller allows adjustment of the maximum power being used to a lower level if necessary, which in turn saves on consumption.



Comfort and programming at your reach at all times

You can adjust, switch on or off each electric radiator independently. There is a daily and weekly program available which will allow you to your desired temperature for every hour of the day, 7 days per week.

Incorporating three operating modes and three regular temperature levels: Comfort, Economy and Frost Protection, users are able to assign their own Comfort, Eco and Frost Protection temperatures from the parameters of the equipment locally or by Internet.



GPS location function

The GPS location function on the G Control System enables mobile devices to be registered on the App.

Users can then establish the distance parameters (in metres), which will activate the heating upon detection to reduce the set-point temperature when the function is activated. That temperature can be selected individually for each piece of heating equipment registered for the household.



DILIGENS

Programmable electric WIFI radiator

Wireless control and operation with the G Control System (via WIFI)



Patented wall
fixing brackets



G Control Hub

The Electronic Triac Control Optimiser (ETCO) is at the core of the heater. This micro processor manages and restricts the flow of electricity to guarantee low consumption. Using Elnur's EcoSeco patented technology, the interior is composed of a heating element specifically designed to disperse the heat evenly over the entire surface of the appliance.



Technical features

- ▶ **Electronic Triac control optimizer ETCO.**
- ▶ White backlight LCD display.
- ▶ Digital temperature selector for displaying real temperature and set up temperature.
- ▶ **Built-in weekly and daily programmer.**
- ▶ **Three-level temperature selector:** Comfort, Economy and Frost-protection.
- ▶ **Internet controllable.** Wireless control and operation with the G Control System for total access to and control of the heating from any where and at any time.
- ▶ **Open window detection** for reduced energy waste.
- ▶ **Adaptive Start Control.**
- ▶ **Proximity detection** using G Control location system.
- ▶ **EcoSeco technology**, without thermal fluid.
- ▶ Built-in electronic **ambient thermostat $\pm 0,1^{\circ}\text{C}$.**
- ▶ Adjustable digital thermostat.
- ▶ Manual override.
- ▶ Possibility of configuring the system manually or automatically as preferred.
- ▶ Rear mounted On-Off switch.
- ▶ Keyboard lock.
- ▶ Thermal safety cut out.
- ▶ Curved design and stylish aluminium body finished in epoxy powder coating RAL 9010.
- ▶ Ratings from 500 to 2000W.
- ▶ Fitted with mains cable.
- ▶ **Patented safety wall fixing brackets** for ease of installation.
- ▶ G Control Hub switchboard is required for the wireless control and operation of the radiator.
- ▶ New amazon Alexa features compatible with G Control System.

EcoDesign
Lot20 Compliant

ecoSeco



| MODELS | | DIL4GC | DIL6GC | DIL8GC | DIL10GC | DIL12GC | DIL14GC |
|---------------|----|---------------|---------------|---------------|---------------|---------------|---------------|
| Output | W | 500 | 750 | 1000 | 1250 | 1500 | 2000 |
| No of modules | | 4 | 6 | 8 | 10 | 12 | 14 |
| Voltage | | 220-240 V | 220-240 V | 220-240 V | 220-240 V | 220-240 V | 220-240 V |
| Frequency | Hz | 50 | 50 | 50 | 50 | 50 | 50 |
| Dimensions* | cm | 43.5x58x10 | 59.5x58x10 | 75.5x58x10 | 91.5x58x10 | 107.5x58x10 | 122x58x10 |
| Net weight | kg | 8 | 11 | 14 | 17 | 20 | 23 |
| EAN13 | | 8432336422607 | 8432336422621 | 8432336422645 | 8432336422669 | 8432336422683 | 8432336422706 |

*Plus 2 cm space from the wall

INGENIUM

AVAILABLE IN 2019

Digital programmable electric radiator, with thermal fluid.

Wireless control and operation with the G Control System (via WIFI)

Technical features

- ▶ Electronic TRIAC control optimizer (ETCO) to manage flow of electricity.
- ▶ White backlight LCD display.
- ▶ Individual daily and weekly programmer.
- ▶ Three temperature levels selector: Comfort, Economy and Frost Protection.
- ▶ Integrated G Control System for configuration and remote control of the radiator via Internet.
- ▶ Temperature selector with display of set-point temperature.
- ▶ Open window detection for reduced energy waste.
- ▶ "Adaptive Start" function.
- ▶ Geo-location via an Internet connection.
- ▶ EcoFluid technology. Shell brand thermal fluid.
- ▶ Built-in electronic ambient thermostat $\pm 0,1^{\circ}\text{C}$.
- ▶ Keyboard lock function.
- ▶ Thermal safety cut-out.
- ▶ Adjustable, digital thermostat.
- ▶ Straight design elements of injected aluminium alloy finished in Epoxy Ral 9010 powder coating.
- ▶ Possibility of configuring the system manually or automatically as preferred.
- ▶ Supplied with mains cable.
- ▶ Quick and easy installation, thanks to the patented wall fixing brackets, which are designed for ease of installation, without the need for measuring or levelling.
- ▶ G Control Hub offered as an accessory to control and manage the radiator via WiFi.
- ▶ G Control Power Meter, offered as an option to control and manage electrical consumption in the home.
- ▶ New amazon Alexa features compatible with G Control System.



Top control



Patented wall fixing brackets



G Control Hub

EcoDesign
Lot20 Compliant

eco fluid

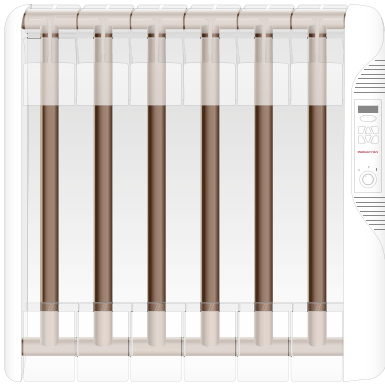


| MODELS | | RD4W | RD6W | RD8W | RD10W | RD12W | RD14W |
|---------------|----|---------------|---------------|---------------|---------------|---------------|---------------|
| Output | W | 500 | 750 | 1000 | 1250 | 1500 | 2000 |
| No of modules | | 4 | 6 | 8 | 10 | 12 | 14 |
| Voltage | | 220-240 V | 220-240 V | 220-240 V | 220-240 V | 220-240 V | 220-240 V |
| Frequency | Hz | 50 | 50 | 50 | 50 | 50 | 50 |
| Dimensions* | cm | 42x58x8 | 58x58x8 | 74x58x8 | 90x58x10 | 106x58x8 | 122x58x8 |
| Net weight | kg | 9 | 12 | 15 | 18 | 21 | 24.5 |
| EAN13 | | 8432336423161 | 8432336423185 | 8432336423208 | 8432336423222 | 8432336423246 | 8432336423260 |

*Plus 2 cm space from the wall

WHY CHOOSE RFE PLUS RADIATORS?

The RFE PLUS range boasts the very latest technology developed by ELNUR to provide a modern ergonomically designed, stylish, efficient and totally controllable electric radiator.



Traditional system with thermal fluid.

With a know-how of 40 years of manufacturing excellence, ELNUR has incorporated clever design features to enhance performance. The RFE PLUS radiator range is manufactured from an injected aluminium structure with thermal fluid inside, specifically designed to disperse the heat over its entire surface.

Every radiator in the RFE PLUS range provides accurate temperature control of the room where they are installed with an electronic chronothermostat that allows the user to set their ideal temperature during the day or the night, as and when required.

Energy control is essential to minimize consumption and reduce electricity expenses.

RFE PLUS radiators provide you with the latest technology in consumption control - ETCO (ELECTRONIC TRIAC CONTROL OPTIMIZER), to manage and restrict the flow of electricity.

Furthermore, each RFE PLUS radiator boasts our built-in weekly/daily programmer to provide the user with precise time control. This easy to use yet comprehensive programmer allows the user to set their desired mode - Comfort, Economy or Frost Protection, for any given hour of the day, providing maximum comfort whilst helping to make savings in unnecessary heating expense.

New features to enhance efficiency and reduce carbon footprint include adaptive start control and open window detection system.

The result is a technically superb product that provides the best efficiency in direct electric heating coupled with our industry leading 5 year electronics and 10 year aluminium components warranty.



RFE PLUS

Electric Radiator, Digital control with programmer

Technical features

- ▶ **Electronic Triac control optimizer ETCO.**
- ▶ Digital temperature selector for displaying real temperature, set up temperature, clock and other messages.
- ▶ **Weekly and daily programmer.**
- ▶ **Three-level temperature** selector: Comfort, Economy and Frost-protection.
- ▶ **Open window detection** for reduced energy waste.
- ▶ **Adaptive start control.**
- ▶ **EcoFluid technology**
- ▶ Built-in electronic **ambient thermostat $\pm 0,1^{\circ}\text{C}$.**
- ▶ Adjustable digital thermostat.
- ▶ Built-in On-Off switch.
- ▶ **Security system** with five-year memory backup, to prevent loss of programming.
- ▶ Flat lockable keyboard for easy cleaning.
- ▶ Thermal safety cut out.
- ▶ IP2X protection.
- ▶ Class I insulation.
- ▶ Stylish aluminium body finished in epoxy powder coating RAL 9010.
- ▶ Ratings from 500 to 2000 W.
- ▶ Fitted with mains cable.
- ▶ **Patented safety wall fixing brackets** for ease of installation.



Patented wall fixing brackets

Our patented Wall Fixing Brackets can save 50% of the installation time avoiding measuring and levelling work.



EcoDesign
Lot20 Compliant

eco fluid



| MODELS | | RF4E PLUS | RF6E PLUS | RF8E PLUS | RF10E PLUS | RF12E PLUS | RF14E PLUS |
|---------------|----|---------------|---------------|---------------|---------------|---------------|---------------|
| Output | W | 500 | 750 | 1000 | 1250 | 1500 | 2000 |
| No of modules | | 4 | 6 | 8 | 10 | 12 | 14 |
| Voltage | | 220-240 V | 220-240 V | 220-240 V | 220-240 V | 220-240 V | 220-240 V |
| Frequency | Hz | 50-60 | 50-60 | 50-60 | 50-60 | 50-60 | 50-60 |
| Dimensions* | cm | 41.5x58x10 | 57.5x58x10 | 73.5x58x10 | 89.5x58x10 | 105.5x58x10 | 121.5x58x10 |
| Net weight | kg | 10.5 | 13 | 17 | 21 | 24.5 | 28 |
| EAN13 | | 8432336418624 | 8432336418648 | 8432336418662 | 8432336418686 | 8432336418709 | 8432336418723 |

*Plus 2 cm space from the wall

WHY CHOOSE NEW ELNUR CONSERVATORY RADIATORS?

The new Elnur conservatory radiator is designed with a lower height, that is ideal for conservatories, rooms with dwarf walls such as a loft conversion and below tall windows. Boasting the very latest technology developed by ELNUR, the RBC conservatory radiator provides a modern ergonomically designed, stylish, efficient and totally controllable electric radiator.

- 430Mm high perfect for conservatories, loft conversions, dwarf walls & below tall windows.
- Built-in energy waste reduction technology for ultimate efficiency.
- Built-in daily or weekly programmer for total control in three temperature modes.
- Relax with our industry leading 10 year manufacturers warranty - for total peace of mind.

Naturally, each conservatory radiator boasts our built-in weekly/daily programmer to provide the user with precise time control. This easy to use yet comprehensive programmer allows the user to set their desired mode - Comfort, Economy or Frost Protection, for any given hour of the day, providing maximum comfort whilst helping to make savings in unnecessary heating expense.

New features to enhance efficiency and reduce carbon footprint include adaptive start control and open window detection system.

The result is a technically superb product that provides the best efficiency in direct electric heating coupled with our industry leading 5 year electronics and 10 year aluminium components warranty.

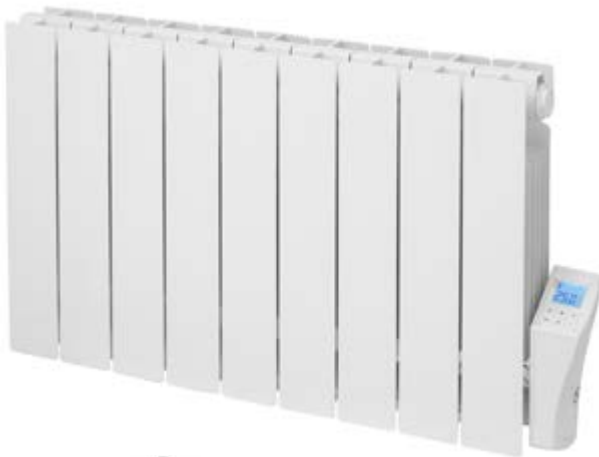


RBC

AVAILABLE NOV. 2018

Digital programmable, low profile radiator, with thermal fluid.

Low Profile
Only 430mm High



Patented wall
fixing brackets

Technical features

- ▶ White backlight LCD display.
- ▶ Different operating modes available: Comfort, Night, Frost Protection and Program.
- ▶ **Daily and weekly programmer.** Possibility to save up to 3 different weekly programs, in order to select the best for each situation.
- ▶ **ECO mode** to reduce established set-point.
- ▶ **Open window** detection function.
- ▶ "Adaptive Start" function.
- ▶ Consumption indicator.
- ▶ **EcoFluid technology.** Shell brand thermal fluid.
- ▶ Built-in electronic **ambient thermostat $\pm 0,1^{\circ}\text{C}$.**
- ▶ Keyboard lock function.
- ▶ Thermal safety cut-out.
- ▶ IP2X Protection
- ▶ Class II insulation.
- ▶ Elements of injected aluminum alloy, finished in Epoxy Ral 9010 powder coating
- ▶ Supplied with mains cable.
- ▶ Quick and easy installation, thanks to the patented wall fixing brackets, which are designed for ease of installation, **without the need for measuring or levelling.**

Our patented Wall Fixing Brackets can save 50% of the installation time avoiding measuring and levelling work.



EcoDesign
Lot20 Compliant



eco fluid

| MODELS | | RBC9 | RBC11 | RBC14 |
|---------------|----|---------------|---------------|---------------|
| Output | W | 1000 | 1250 | 1500 |
| No of modules | | 9 | 11 | 14 |
| Voltage | | 220-240 V | 220-240 V | 220-240 V |
| Frequency | Hz | 50-60 | 50-60 | 50-60 |
| Dimensions* | cm | 79.5x43x10 | 95.5x43x10 | 119.5x43x10 |
| Net weight | kg | 15 | 17 | 20 |
| EAN13 | | 8432336409745 | 8432336409769 | 8432336409783 |

*Plus 2 cm space from the wall



WHY CHOOSE RXE PLUS RADIATORS?

The RXE PLUS range harnesses our patented dry technology that was developed by ELNUR to provide a more environmentally friendly, modern, stylish, efficient and totally controllable electric radiator.

The RXE PLUS radiator range benefits from our vast industry experience and flair for innovation. Each radiator incorporates clever design features and is manufactured from a steel body with extruded aluminium front and upper panels. The extruded corrugated aluminium front panel design increases the heat cession to the room by more than 50%. In addition, the upper aluminium panel has been designed to re-direct the convection effect resulting in faster heat distribution.

Continuing our standard for “quality without compromise”, RXE PLUS radiators benefit from:

- Highly accurate electronic thermostat for room temperature control
- Energy control management - ETCO (Electronic Triac Control Optimizer) to manage and restrict the flow of electricity
- Easy to use built-in weekly / daily programmer allowing users to set their desired mode (comfort, economy or frost protection) for any hour of the day.
- Open window detection for reduced energy waste.
- Adaptive start control to guarantee maximum comfort at the desired time.

The RXE PLUS range is a technically superb product at a truly affordable price that provides the best efficiency in direct electric heating coupled with our industry leading 5 year electronics and 10 year aluminium components warranty.



RXE PLUS

Electric Inertia Radiator, Digital control with programmer



Patented wall
fixing brackets

Technical features

- ▶ **Electronic Triac control optimizer ETCO.**
- ▶ Digital temperature selector for displaying real temperature, set up temperature, clock and other messages.
- ▶ **Weekly and daily programmer.**
- ▶ **Three-level temperature selector:** Comfort, Economy and Frost-protection.
- ▶ **Open window detection** for reduced energy waste.
- ▶ **Adaptive start control.**
- ▶ **EcoSeco technology**, without thermal fluid.
- ▶ Built-in electronic **ambient thermostat $\pm 0,1^{\circ}\text{C}$.**
- ▶ Adjustable digital thermostat.
- ▶ Built-in On-Off switch.
- ▶ **Security system** with five-year memory backup, to prevent loss of programming.
- ▶ Flat lockable keyboard for easy cleaning.
- ▶ Ratings from 500 to 2000 W.
- ▶ Thermal safety cut out.
- ▶ IP2X protection.
- ▶ Class I insulation.
- ▶ Stylish aluminium body finished in epoxy powder coating RAL 9010.
- ▶ Fitted with mains cable.
- ▶ **Patented safety wall fixing brackets** for ease of installation.



| MODELS | | RX4E PLUS | RX6E PLUS | RX8E PLUS | RX10E PLUS | RX12E PLUS | RX14E PLUS |
|---------------|----|---------------|---------------|---------------|---------------|---------------|---------------|
| Output | W | 500 | 750 | 1000 | 1250 | 1500 | 2000 |
| No of modules | | 4 | 6 | 8 | 10 | 12 | 14 |
| Voltage | | 220-240 V | 220-240 V | 220-240 V | 220-240 V | 220-240 V | 220-240 V |
| Frequency | Hz | 50 | 50 | 50 | 50 | 50 | 50 |
| Dimensions* | cm | 41.5x58x10 | 57.5x58x10 | 73.5x58x10 | 89.5x58x10 | 105.5x58x10 | 121.5x58x10 |
| Net weight | kg | 8.5 | 10 | 13 | 15 | 19 | 19 |
| EAN13 | | 8432336418501 | 8432336418525 | 8432336418549 | 8432336418563 | 8432336418587 | 8432336418600 |

*Plus 2 cm space from the wall

PANEL HEATERS

Our PH PLUS panel heaters herald a new dawn in electric heating with a traditional product benefiting from the very latest technologies to provide a modern, efficient and controllable direct acting heater.

Our wall mounted panel heaters are the perfect choice for a cost effective and rapid solution to heating a room occasionally or for short periods of time during the day.

These panel heaters are the desired solution for home owners and designers alike, taking up little space and quickly reaching an even and comfortable temperature.

As well as being used as an independent heating system, they are also used to complement other electric heating systems such as storage heaters and are ideal for use in rooms such as bedrooms, bathrooms, kitchens and other areas where constant heating is not required.

With the PH PLUS range of panel heaters, the temperature can be accurately controlled via the built-in digital thermostat that boasts an industry leading accuracy of $\pm 0.1^{\circ}\text{C}$.

Available in 4 different outputs - 750w, 1250w, 1500w and 2000w, this superb range of heaters are equipped with efficient features such as daily and weekly digital programmer, highly accurate thermostat, three temperature modes, open window detection for reduced energy waste, adaptive start control to guarantee maximum comfort at the desired time and a 5 year memory back-up security system.



PH PLUS

Digital Panel Heater with programmer



PH Plus
Control Panel

Technical features

- ▶ **Electronic Triac control optimizer ETCO.**
- ▶ Digital temperature selector for displaying real temperature, set up temperature, clock and other messages.
- ▶ **Daily and weekly programmer.**
- ▶ **Three-level mode temperature selector:** Comfort, Economy and Frost-protection.
- ▶ **Open window detection** for reduced energy waste.
- ▶ **Adaptive start control.**
- ▶ Built-in electronic **ambient thermostat** $\pm 0,1^{\circ}\text{C}$.
- ▶ Adjustable digital thermostat.
- ▶ Flat lockable keyboard for easy cleaning.
- ▶ Built-in On-Off switch.
- ▶ **Security system** with five-year memory backup, to prevent loss of programming.
- ▶ Input from 750W to 2000W.
- ▶ Thermal safety cut out.
- ▶ Protection IP2X.
- ▶ Class I insulation.
- ▶ Powder coated RAL 9010 steel structure.
- ▶ Fitted with 1,5m mains cable.
- ▶ Unique wall fixing brackets included.



| MODELS | | PH-075 PLUS | PH-125 PLUS | PH-150 PLUS | PH-200 PLUS |
|-------------|----|---------------|---------------|---------------|---------------|
| Output | W | 750 | 1250 | 1500 | 2000 |
| Voltage | V | 230-240 | 230-240 V | 230-240 V | 230-240 V |
| Frequency | Hz | 50-60 | 50-60 | 50-60 | 50-60 |
| *Dimensions | cm | 41x41x8 | 56x41x8 | 63x41x8 | 78x41x8 |
| Net weight | kg | 3.5 | 4 | 4.5 | 5.5 |
| EAN 13 | | 8432336603259 | 8432336603273 | 8432336603297 | 8432336603310 |

*2.5 cm space from wall.





TOWEL RAIL RADIATORS

The GABARRÓN range of towel rails and towel warmers has been designed to add a touch of luxury and sophistication to bathrooms.

By their very nature, these high quality towel rails will provide warmth for the bathroom, dry or warm up delicate garments or even keep your towels warm whilst at the same time, helping to reduce moisture and mildew.

With a GABARRÓN towel rail, design and functionality come together to provide warmth, comfort and convenience.

Our towel rails are available in a chrome plated finish with a sleek thermostat control or a white finish with a digital thermostat and programmer allowing you to maintain a stable heat output at the exact times you need it.

Maintenance free

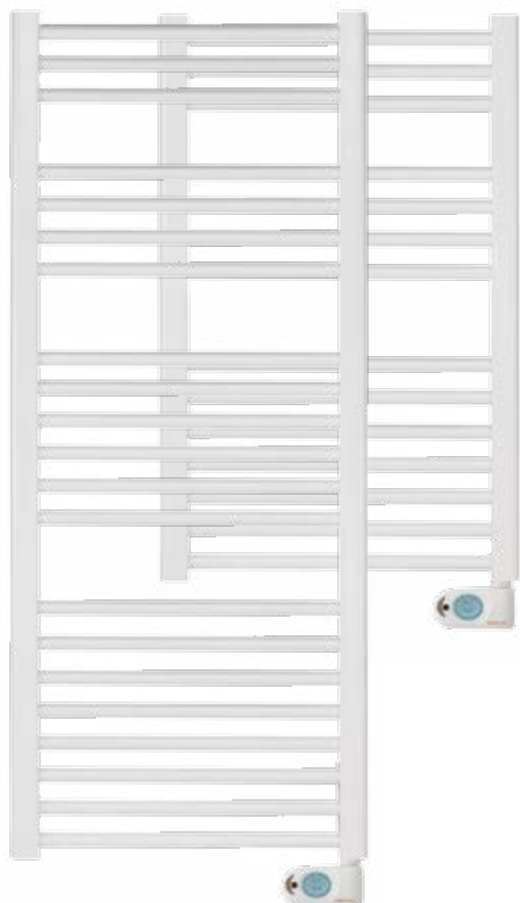
100% energy efficient

Chrome plated or white finish options

*“Enjoy the luxury of a special
sensation after a relaxing bath”*

TBBK

Digital towel rail radiator with programmer



TBBK
Panel control

Technical features

- ▶ Digital towel rail with **weekly and daily programmer**.
- ▶ Blue backlight LCD display.
- ▶ Digital temperature selector for displaying real temperature, set up temperature, programming and other information.
- ▶ **Different operating modes** can be set up such as Comfort, Eco, Frost protection, 2 hours Timer, Chrono and Pilot wire.
- ▶ **Two levels of temperature** Comfort and Eco can be selected in the programming.
- ▶ **Open window detection** for reduced energy waste.
- ▶ "Timer 2h" mode to quickly warm up the room or to speed up towel drying.
- ▶ Built-in electronic **ambient thermostat $\pm 0,1^{\circ}\text{C}$** .
- ▶ Compatible with pilot wire controllers.
- ▶ Low density thermal fluid.
- ▶ Keyboard lock.
- ▶ Thermal safety cut out.
- ▶ IP44 protection, against splashing water.
- ▶ Class II insulation.
- ▶ Models finished in white RAL 9010 epoxy.
- ▶ Fitted with mains cable.
- ▶ Safety wall fixing brackets.
- ▶ TB-150 model is a fixed output without controller.



EcoDesign
Lot20 Compliant

| MODEL | | TB-150 | TBB-8K | TBB-12K |
|------------|----|----------|---------------|---------------|
| Output | W | 150 | 300 | 600 |
| Voltage | | 220-240 | 220-240 V | 220-240 V |
| Frequency | Hz | 50-60 | 50 | 50 |
| Dimensions | cm | 87x50x8 | 87x50x8 | 128x50x8 |
| Net weight | kg | 9 | 10 | 14 |
| EAN13 | | 84323365 | 8432336502446 | 8432336502460 |

*Plus 2 cm space from the wall.

TBC

Chrome plated towel warmer with electronic thermostat

Technical features

- ▶ Low density thermal fluid.
- ▶ High sensitivity electronic thermostat.
- ▶ Safety thermal cut out.
- ▶ IP54 protection, against dripping water.
- ▶ Class I insulation.
- ▶ High safety wall brackets.
- ▶ Supplied with 1.3 m mains cable.
- ▶ Models finished in Chrome.
- ▶ Manual temperature selector in TBC-8 and TBC-12 versions.



TBC temperature
electronic control



| MODEL | | TC-150 | TBC-8 | TBC-12 |
|------------|----|---------------|---------------|---------------|
| Input | W | 150 | 300 | 500 |
| Voltage | V | 220-240 | 220-240 | 220-240 |
| Frequency | Hz | 50-60 | 50-60 | 50-60 |
| Dimensions | cm | 87x50x8 | 87x50x8 | 128x50x8 |
| Weight | kg | 9 | 10 | 14 |
| EAN 13 | | 8432336502354 | 8432336500206 | 8432336500251 |

*Plus 2cm space from the wall







MATTIRA

ELECTRIC BOILERS

Mattira, one of the safest and most reliable electric boilers on the market

Elnur presents Mattira, the new electric boiler range to cover your Domestic Hot Water and Heating needs. Mattira is the ideal option when a totally safe and reliable efficient central heating system is required.

Our digital electric boilers are the only ones on the market that regulate energy consumption according to the heating needs of the installation, taking into account not only the ambient temperature, but also the external temperature.

Mattira ensures the optimum comfort in your home, with the maximum running cost savings thanks to its Modulation and AutoHeating Regulation features.

The modulating feature of our electric boilers is managed by a Smart Electronic Modulating System (SEM). It applies TRIAC technology combined with an external chrono thermostat to continuously adapt the heating capacity to the heating needs of the premises, thus achieving 100% energy efficiency and overall savings in energy costs.

It is possible to regulate the temperature at which the boiler drives the water heating circuit depending on the outdoor temperature. This method of regulation provides maximum comfort as it anticipates changes in the thermal needs of the house.

These features and the fact that, Mattira electric boilers modulate in steps of 1 kW, reduce any possibility of energy waste to the minimum offering you the maximum comfort in your home.

Mattira can be installed on single or three-phase electric supplies. All Mattira electric boilers can be limited to any output between 3 and 12kW on single phase supplies and up to 15kW on three-phase supplies.

None of our boilers emit gases or direct pollution when operating. They do not operate using fuels such as gas or diesel and there is therefore no risk of leaks or explosions.

“Trying to decide on the best central heating for your home? Feel the perfect experience of comfortability with Mattira Modulating Electric Boilers, a safe and warm ambience in your home.”

Main features and benefits

Energy Savings



Heating Modulation

The advanced control board on the boiler will automatically modulate the heating output to the demand required to save energy. This modulating feature of GABARRÓN electric boilers is managed by a Smart Electronic Modulating system (SEM system) which re-calculates every 20 seconds in order to regulate the consumption depending on the real heat demand. It applies TRIAC technology combined with an external chrono-thermostat to continuously adapt the heating capacity to the heating needs of the premises, thus achieving 100% energy efficiency and overall savings in energy costs.

Maximum Comfort



Auto Heating Regulation

Additionally, it is possible to regulate the temperature at which the boiler drives the water heating circuit depending on the outdoor temperature. This method of regulation provides maximum comfort as it anticipates changes in the thermal needs of the house. The room thermostat continues to regulate the temperature inside the house. The connection of an external temperature sensor is required to activate this mode.



Easy Installation

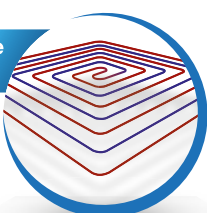
Gabarron Mattira electric boilers come fitted with all the components required to operate the unit, including a template for ease of installation. Installation is quick and easy and can usually be completed in a single day.



5 Years Guarantee

Your new Gabarron Mattira electric boiler from Elnur is warranted against faulty materials and manufacture defects. This warranty will give you total peace of mind and protection. Full terms and conditions of the warranty are detailed in the manual supplied with the boiler which can also be downloaded from our website - www.elnur.co.uk. The internal unvented hot water cylinder is warranted against faulty materials and manufacture defects for a period of 5 years from the date of purchase. The remainder of components are warranted against faulty materials and manufacture defects for a period of 2 years.

Compatible Underfloor



Compatible with Underfloor Heating

The entire range of GABARRÓN boilers can be used with hot water radiators or with radiant floor or overhead heating. In addition, Mattira boilers can be installed in combination with other heating systems such as thermal solar panels, heat pumps, etc...

*"Mattira offers you the best reliability,
safety and comfortability in your home
Buy now and start to enjoy!"*

Legionella Protection

The new Mattira Combi Boilers include our "Legionella Protection" system. If this function is activated, the DHW temperature is raised once a week to the maximum allowed, preventing Legionella growth through water temperature control.



Frost Protection Mode

It is possible to select an anti-freeze mode for frost protection during periods of inactivity. By selecting the frost protection mode, the heating system will activate automatically if the boiler temperature falls under 8°C.



Digital Display

Mattira boasts an intuitive and user friendly digital display. The digital display constantly shows the temperature of the circulating heating water and of the domestic hot water tank (DHW) in combi boilers. Heating and DHW are independent modules, this means that we can turn off the heating and only keep the DHW or vice versa. In both displays the keyboard lock can be activated to avoid changes being made.



Building Regulations G3 compliant

The Mattira Combi boiler incorporates a 50 litre unvented hot water store to optimise hot water performance. As such, careful consideration to the boiler design has been taken to ensure that the Mattira Combi Boiler incorporates all components and operates in full compliance with G3 of the Building Regulations.



Erp Compliant

The objective is to reduce adverse and greenhouse gas emissions to limit the environmental impacts throughout the life-cycle of a product, with emphasis placed on the design and development stages of a product with a view to improving its energy efficiency.





MATTIRA COMBI

*Digital Modulating Electric Boiler,
for heating and domestic hot water*



MAC15
Wall mounted

Features

Heating boiler made of insulated steel.

Modulating electronic control of the heater by **SEM system** (Smart Electronic Modulating system).

50L DHW tank made of insulated stainless steel, CFC free.

Stainless steel shielded elements - INCOLOY800 for heating and DHW.

6L heating expansion vessel.

3L DHW expansion vessel.

Modulating electronic control of the heater.

Pressure gauge 0-4bar.

Circulating pump.

Auto air vent.

Silent TRIAC power switches.

Auto Heating Regulation mode.

Heating flow detector.

Heating temperature limiter 100°C.

DHW temperature limiter 80°C.

Heating 3 bar relief valve.

DHW 7 bar relief valve.

Also suitable for use with under floor heating.

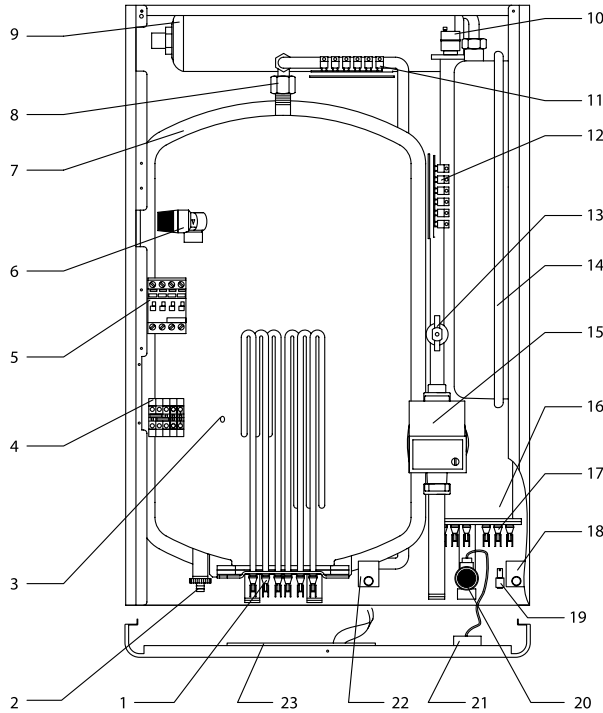
DHW anti-electrolysis hoses.

Powder coated RAL 9010.

Wall bracket steel template to set up connections easily.

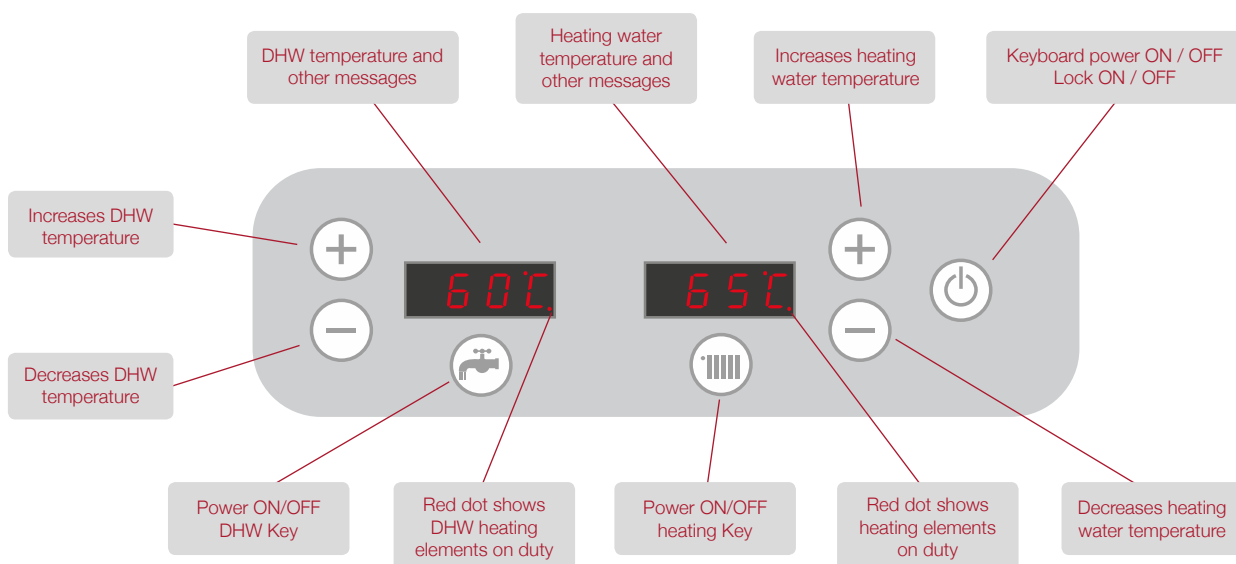
Compatible with the Elnur "RSTAT" Ambient Thermostat and the Elnur Connected range of internet thermostats, all available as accessories.

Main Components



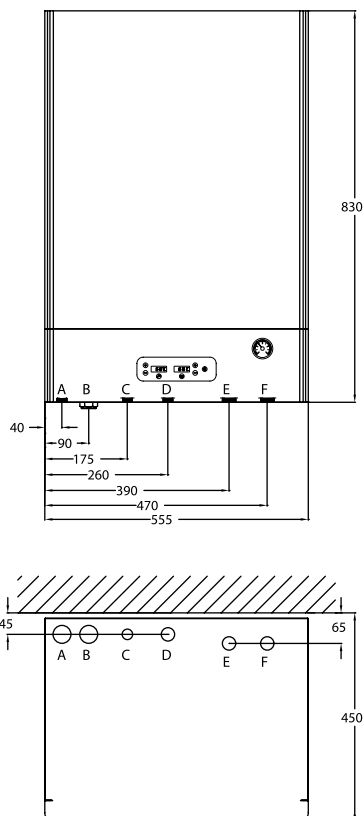
- 1 DHW resistance.
- 2 Drain valve.
- 3 Temperature sensor location.
- 4 Connection block.
- 5 Main contactor.
- 6 DHW 7 bar relief valve.
- 7 Insulated tank 50L.
- 8 Anti-electrolysis DHW hose.
- 9 DHW expansion vessel 3L.
- 10 Automatic purge.
- 11 DHW power electronic PCB.
- 12 Heating power electronic PCB.
- 13 Heating flow detector.
- 14 Heating expansion vessel 6L.
- 15 Circulation pump.
- 16 Insulated heating header tank.
- 17 Heating resistance.
- 18 Heating safety thermal limit switch.
- 19 ON/OFF switch.
- 20 Heating 3 bar relief valve.
- 21 Pressure gauge.
- 22 DHW safety thermal limit switch.
- 23 Main electronic PCB.

Control panel





Technical Specifications



Wall mounted

MATTIRA COMBI MAC15

*Digital Modulating Electric Boiler,
for heating and domestic hot water*

Dimensions and connections:

- A - Safety valve drain DHW
- B - Electrical connection
- C - Cold water input 1/2"
- D - DHW outlet 1/2"
- E - Heating return 3/4"
- F - Heating flow 3/4"

"Trust Mattira and feel the comfort of a safe and reliable digital electric boiler at home."



| MODEL | | MAC15 | | | | | | | | | | | |
|---------------------|--------|--------|--------|--------|--------|--------|--------|-------|-------|-------|-------|-------|-------|
| Selectable output | kW | 3 | 4 | 5 | 6 | 7 | 8 | 9 | 10 | 11 | 12 | 13 | 15 |
| kcal/h | kcal/h | 2580 | 3440 | 4300 | 5160 | 6020 | 6880 | 7740 | 8600 | 9460 | 10320 | 11180 | 12900 |
| Current 3x400 V+N~ | L1 A | 13.0 | 0 | 8.7 | 8.7 | 8.7 | 13.0 | 13.0 | 13.0 | 21.7 | 8.7 | 21.7 | 21.7 |
| | L2 A | 0 | 8.7 | 13.0 | 8.7 | 13.0 | 8.7 | 13.0 | 8.7 | 13.0 | 21.7 | 21.7 | 21.7 |
| | L3 A | 0 | 8.7 | 0 | 8.7 | 8.7 | 13.0 | 13.0 | 21.7 | 13.0 | 21.7 | 13.0 | 21.7 |
| *Current 230 V~ | A | 13.0 | 17.4 | 21.7 | 26.1 | 30.4 | 34.8 | 39.1 | 43.5 | 47.8 | 52.2 | Ask | Ask |
| **DHW Recovery time | min | 29'04" | 21'48" | 17'26" | 14'32" | 12'27" | 10'54" | 9'41" | 8'43" | 7'56" | 7'16" | 6'42" | 5'49" |

*Using included bridge connection

**Recovery time in minutes to heat DHW from cold to 55°C.

| MODEL | | MAC15 |
|------------|----|---------------------|
| Voltage | V | 3x400 V+N / 220-240 |
| Frecuency | Hz | 50-60 |
| Insulation | | Class I |
| Net Weight | kg | 61 |
| EAN 13 | | 8432336804663 |



MATTIRA SYSTEM

*Digital Modulating Electric Boiler,
Heating Only*



D

MAS15
Wall mounted

Features

Wall mounted heating boiler made of insulated steel.

Modulating electronic control of the heater by **SEM system** (Smart Electronic Modulating system).

Stainless steel shielded elements - INCOLOY 800.

6L heating expansion vessel.

Auto Heating Regulation mode.

Pressure gauge 0-4bar.

Circulating pump.

Auto air vent.

Silent TRIAC power switches.

Heating flow detector.

Heating temperature limiter 100°C.

Heating 3 bar relief valve.

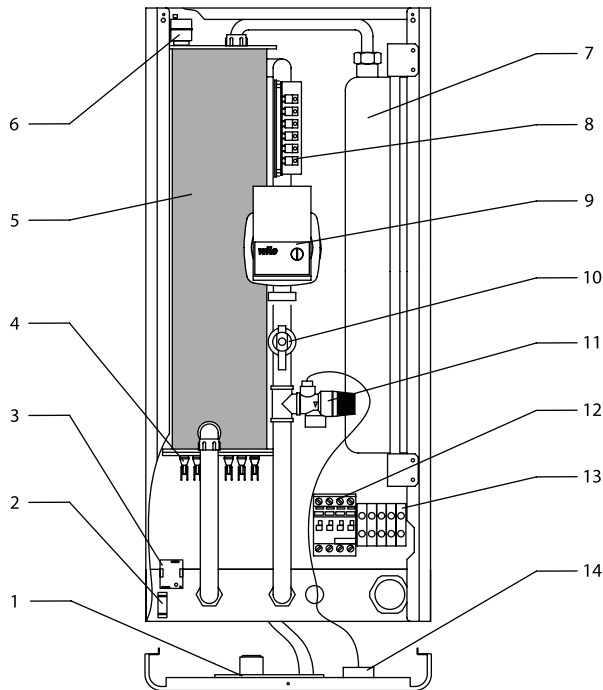
Also suitable for use with under floor heating.

Powder coated RAL 9010.

Wall bracket steel template to set up connections easily.

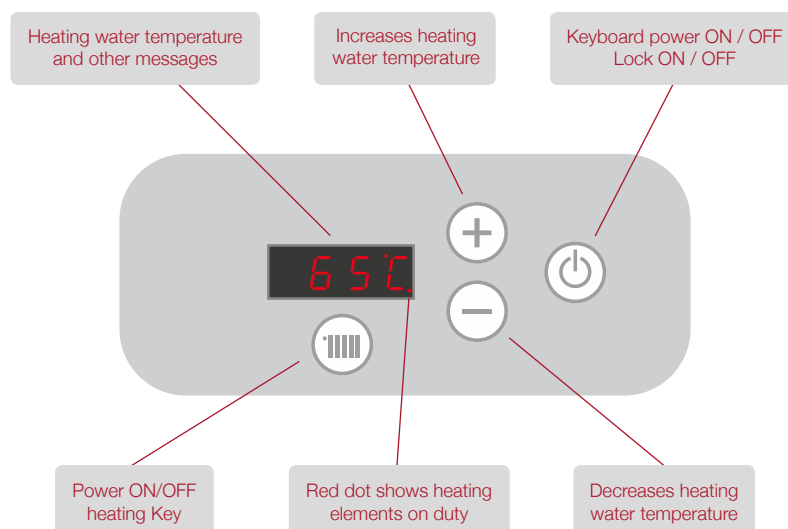
Compatible with the Elnur "RSTAT" Ambient Thermostat and the Elnur Connected range of internet thermostats, all available as accessories.

Main Components



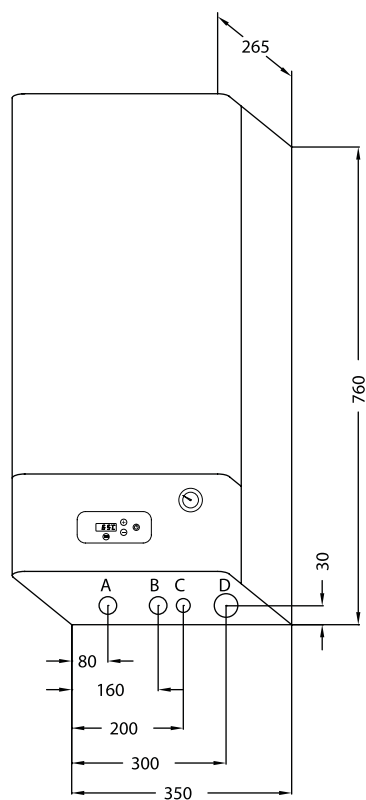
- 1 Main electronic PCB.
- 2 ON / OFF switch.
- 3 Heating safety thermal limit switch.
- 4 Heating resistances.
- 5 Insulated heating header tank.
- 6 Automatic purge.
- 7 Heating expansion vessel 6L.
- 8 Heating power electronic PCB.
- 9 Circulation pump.
- 10 Heating flow detector.
- 11 Heating 3 bar relief valve.
- 12 Main contactor.
- 13 Connection block.
- 14 Pressure gauge.

Control panel





Technical Specifications



Wall mounted

MATTIRA SYSTEM MAS15

*Digital Modulating Electric Boiler,
Heating Only*

Dimensions and connections:

- A - Heating flow $\frac{3}{4}$ "
- B - Heating return $\frac{3}{4}$ "
- C - Safety valve drain
- D - Electrical connection

"Renowned Elnur quality and reliability to meet the heating demands of modern family life."



| MODEL | | MAS15 | | | | | | | | | | | |
|--------------------|--------|-------|------|------|------|------|------|------|------|------|-------|-------|-------|
| Selectable output | kW | 3 | 4 | 5 | 6 | 7 | 8 | 9 | 10 | 11 | 12 | 13 | 15 |
| kcal/h | kcal/h | 2580 | 3440 | 4300 | 5160 | 6020 | 6880 | 7740 | 8600 | 9460 | 10320 | 11180 | 12900 |
| Current 3x400 V+N~ | L1 A | 13.0 | 0 | 8.7 | 8.7 | 8.7 | 13.0 | 13.0 | 13.0 | 21.7 | 8.7 | 21.7 | 21.7 |
| | L2 A | 0 | 8.7 | 13.0 | 8.7 | 13.0 | 8.7 | 13.0 | 8.7 | 13.0 | 21.7 | 21.7 | 21.7 |
| | L3 A | 0 | 8.7 | 0 | 8.7 | 8.7 | 13.0 | 13.0 | 21.7 | 13.0 | 21.7 | 13.0 | 21.7 |
| *Current 230 V~ | A | 13.0 | 17.4 | 21.7 | 26.1 | 30.4 | 34.8 | 39.1 | 43.5 | 47.8 | 52.2 | Ask | Ask |

*Using included bridge connection.

| MODEL | | MAS15 |
|------------|----|---------------------|
| Voltage | V | 3x400 V+N / 220-240 |
| Frequency | Hz | 50-60 |
| Insulation | | Class I |
| Net Weight | kg | 29.5 |
| EAN 13 | | 8432336804700 |

ELNUR CONNECTED

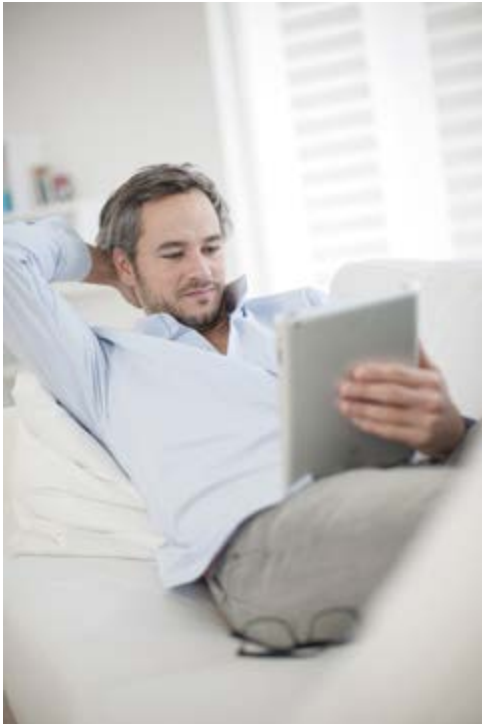
THE SMART WAY TO CONTROL YOUR HEATING



MATTIRA WIFI CONTROLS

Gabarrón
Manufacturing Excellence

"For flexibility and control, an Elnur Connected boiler will provide you with all of the features and benefits that you need to improve comfort levels and efficiency, both at and when away from the home."



ELNUR CONNECTED

Elnur Connected revolutionises the control of electric heating systems

Elnur Connected is the perfect control system for your new Mattira boiler. Easy to install and set up, the Elnur Connected boiler control system can be operated in the home or from wherever you are by using the purpose designed App on your Smartphone or Tablet.

This **SmartLife Technology** is the perfect solution for ultimate home heating efficiency and an ideal choice for houses, apartments, holiday homes and weekend cottages as well as offices, commercial properties and public meeting / community halls.



Elnur Connected
Gateway



Elnur Connected
Wireless Room/Zone Thermostat



Elnur Connected
Boiler Link



ELNUR CONNECTED SYSTEM

THE SMART WAY TO CONTROL YOUR HEATING

The Elnur Connected Gateway is the beating heart of the Elnur Connected system and creates a strong internal home Wi-Fi network to control your heating system even if your internet service is down.

Programmable Room Stat Pack



For heating only applications, the programmable room thermostat pack provides the best mix of traditional control and up to the minute Wi-Fi connectivity.

The fully featured programmable stat allows the user set up and adjustment of their system within the home.

By wirelessly connecting to the Gateway and the Boiler Link, the programmable stat will make any adjustments to the system operation that the user desires.

With the added benefit of Elnur's SmartLife Technology, control of the programmable thermostat can now be added to your Smartphone or Tablet. Simply download the FREE "App", setup the system and control is at your fingertips, wherever you are.

Room Stat Pack



For heating only applications, the room thermostat pack offers the homeowner the capability of simple home control with the addition of on-the-go connectivity via a Smartphone or Tablet.

Programming of your system is provided on the Elnur Connected "App" where our Smartlife Technology allows up to 6 different time and temperature settings for each and every day.

For ultimate efficiency of your home heating system, why not add extra room stats to create a bespoke multi-zone system.

With the capability of connecting up to 16 zones, users can opt from a simple single zone to a two zone system for living spaces and bedrooms to a multi-zone system for every room.

S-Plan Pack



Designed for systems controlling central heating and hot water via an indirect cylinder.

The room thermostat provides simple home control over the central heating system and on-the-go connectivity via a Smartphone or Tablet.

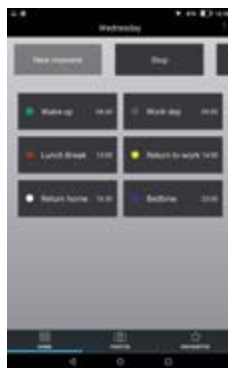
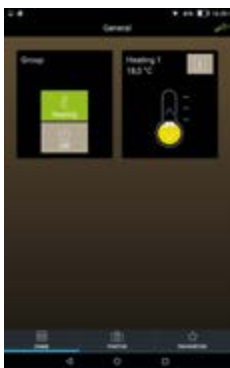
The Cylinder Stat Link will connect to any standard cylinder thermostat and allow control of times that your boiler heats the hot water cylinder.

Programming of both heating and hot water is provided on the Elnur Connected "App" where our Smartlife Technology allows up to 6 different daily time and temperature settings for heating and up to six on/off periods per day for hot water heating. Multi-zone options can also be created.

"SmartLife Technology guarantees your Elnur Connected heating system will provide ease of control wherever you are."



SMARTLIFE TECHNOLOGY



"App" snapshots depicting a heating zone page, program overview and programming page.

| MODEL | REFERENCE | CONTENTS |
|------------------------------|-----------|------------------------------------------------------|
| Programmable Room Stat Pack | ECPACK1 | Programmable Room Stat, Gateway & Boiler Link |
| Room Stat Pack | ECPACK2 | Room Stat, Gateway & Boiler Link |
| "S-Plan" Pack | ECPACK3 | Room Stat, Gateway, Boiler Link & Cylinder Stat Link |
| Add-on Room Stat Pack | ECPACK4 | Room Stat & Boiler Link |
| Add-on Immersion Heater Pack | ECPACK5 | Immersion Link |

Visit the ELNUR website today

For all the very latest information, product updates, downloads and advice, please visit the ELNUR website www.elnur.co.uk



View information on:

- ▶ Our exciting range of MATTIRA electric combi and system boilers
- ▶ View our industry blog for the very latest information and advice
- ▶ Watch our “how to” videos
- ▶ View and download our product brochures, case studies and installation/user guides
- ▶ Get “Tips & Hints” from the experts
- ▶ Register the warranty for your new Elnur appliances

CUSTOMER SERVICE

A product manufactured in accordance with the highest level of quality performance deserves to be complemented by excellent service. At **ELNUR**, all departments are customer-focused, offering quick and efficient solutions to any problems that may arise. If you have any queries, please email us at info@elnur.co.uk or call us to the following telephone number **01942 670119**.

AFTER-SALES TECHNICAL SUPPORT

ELNUR's job does not finish when the goods are dispatched. We are committed to initial development, manufacturing and customer service. And this customer service includes a professional after-sales service. We have an Authorised Technical Services Network providing effective technical assistance all over the country, irrespective of the location or the product. Do contact us at technical@elnur.co.uk

PROJECT MANAGEMENT

We know that many concerns may arise when it comes to evaluating your project requirements. Our Projects Department will advise you on each of the areas of your project and will offer you the best solution, taking into account potential options so that you can suggest a number of different alternatives to the end customer. Please contact us at projects@elnur.co.uk

PROFESSIONAL ADVICE

In this department you can get the assistance you need in order to solve any technical concerns you may have. We will provide direct and personalised assistance, offering the support necessary to resolve any issues with installing or setting up any of our products. Email us at advice@elnur.co.uk

QUALITY

ELNUR is fully committed to quality. We therefore have complete control over the whole manufacturing processes in the company. Some of our international certifications are:



ISO 9001:2015 Quality Control Management System, which certifies the implementation and maintenance of the system through a cycle of continuous improvement in the performance of its procedures in all areas of the company, with the aim of achieving greater customer satisfaction.



ISO 14001:2015 Environmental Management System, which guarantees that our procedures are developed in accordance with environmental care and respect throughout the production process, from the initial design to the final stages of manufacturing.

SUSTAINABILITY

Interest in environmental care is increasing, as well as the concept of manufacturing in compliance with environmental protection standards. Human beings use the natural resources of the planet believing that they constitute an inexhaustible source, and at the same time the current levels of industrialization and consumption increasingly pollute the habitat that surrounds us.

This is why ELNUR is totally committed to working and manufacturing in accordance with the appropriate certification under the Environmental Management System which guarantees environmental care and respect under the parameters established in the ISO 14001 standard.

Not only do we wish to minimize the negative impact on our ecosystem, we also continuously strive to improve and produce increasingly advanced and efficient products with minimum energy consumption.

Gabarrón ranges do not produce gases or fumes, nor do they directly emit any pollutants to the environment when operating. They can be used with renewable energy sources coming from natural resources such as sun or wind.

Please join us in reducing the carbon footprint, and together we can combat its negative impact.





ELNUR UK Limited

Unit 1, Brown Street North
Leigh, Lancashire
WN7 1BU
Tel.: 01942 670119
Fax: 01942 670462
info@elnur.co.uk

www.elnur.co.uk

Headquarters

ELNUR S.A.
MADRID (Spain)
export@elnur.es
www.elnur-global.com