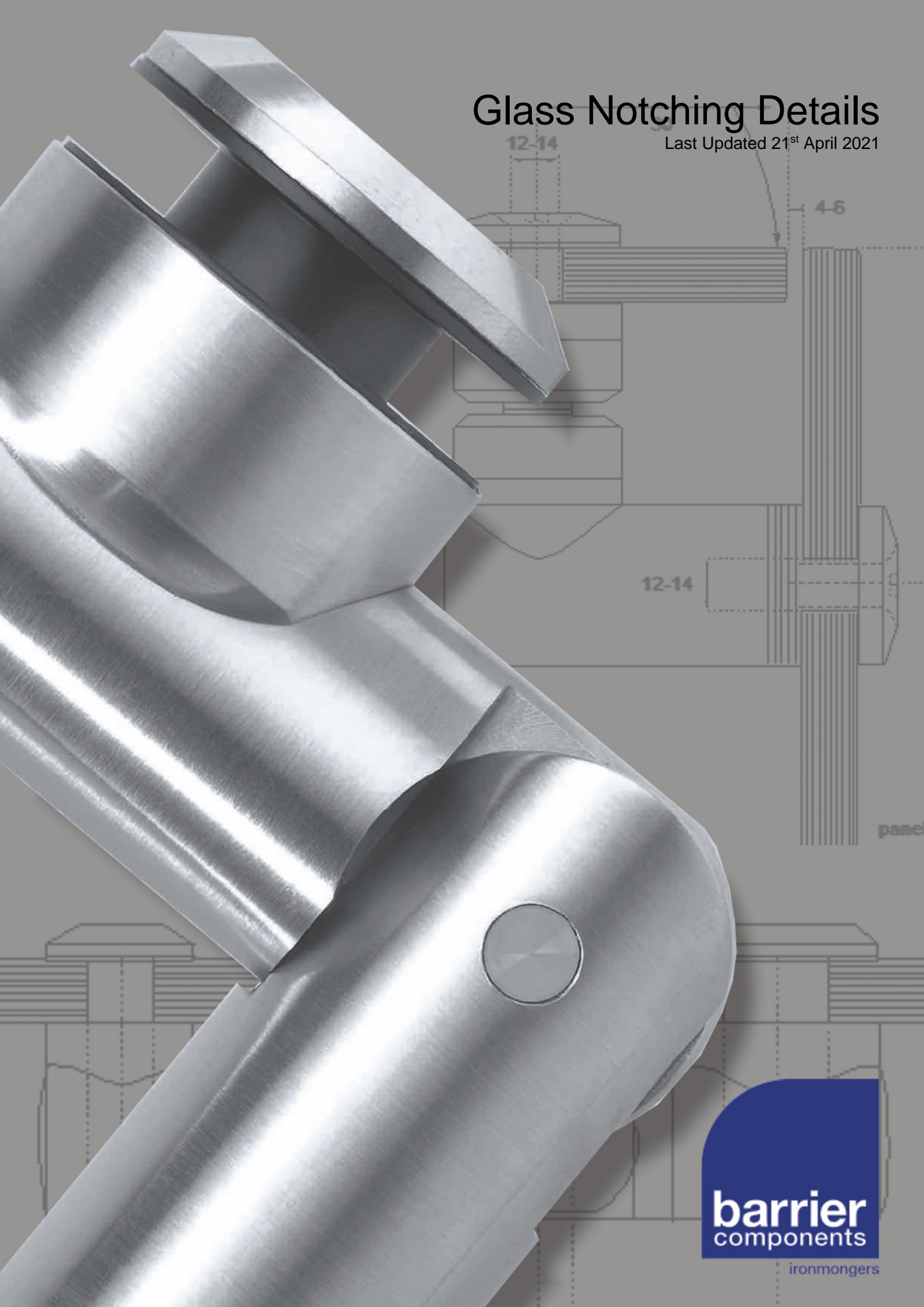


Glass Notching Details

Last Updated 21st April 2021



Contents

Product Code / Description	Page No.
Door Rail Details	3-9
GT10, GT20, GT30, GT40, GT40K, GT40S, GT40KS	10
GT41, GT41K	11
GL50S/CL, GL50K, GL53, GL53K	12
GT51	13
GT50/2KS, GT70, GT71	14
GT80, GT81	15
GL52, GL52K, GT73W	16
CL Clamp	17-18
GX992.1, GX992.1B, GX992.2, GX992.3, GX992.4	19-20
GX991.1, GX991.1B, GX991.2, GX991.3, GX991.4, GX991.5	21-23
GX680.1, GX680.1B, GX680.2, GX680.3, GX680.4	24-25
LH-30, LH-30S, LH-32	26
LH-86W, LH-86.2, LH-86.4	27
GX45.1, GX45.1L, GX45.2, GX45.4, GX45.3	28
Shower Door Clearances Typical Installation	29
IDL-52, LP102	30
Biloba Hinges 8010, 8011, 8015, 8060	31-32
HGT-100, HGT,200	33
Unica Heel Spring 101E 10	34
G-Tech Sliding Door System	35-39
G-Tech Pivot	40
GP10, GP20, GP30	41
GL34S, GL34K	42
GX512.1, GX512.2	43
GX512.4	44
558, GX62.1	45
GX62.1MH, GX62.2	46
GX62.2MH, GX62.4	47
GX62.4MH	48
Magnetic Seals	49
540004, 540006, 540001	50
RH65, RH68, RH73W	51
1260, G102C	52
F24, C24, G245F	53
Vitris Locks - Inset, Overlap & Security	54
XL-GC02, XL-GC07, XL-GC04	55
Adjustable Glass Stand Off, Sadev Slab Nose	56
Glass Stiffeners	57
Pre-Assembled Posts	58
Barrierslide Crystal	59
Glass Canopy	60-61
Weldable Glass Clamps	62-63

For further details please call us on **01708 891515** or email **sales@barrier-components.co.uk**

Drawings **Not** to Scale

All measurements are in millimetres

Last updated 21st April 2021

Installation and notching details

Our door rail is a unique design in that the glass is held into position by a clamp system and requires no sealant. The rail is suitable for 10mm and 12mm glass (must be specified when ordering) and does not require any notching.

Rail preparation

If the rail has not been supplied in a 'cut and prepared state', it will be necessary to drill extra holes for the securing bolts. A 9mm Ø drill bit is required. The end holes for the clamps should be drilled at least 15mm from either end of the rail.

Glass sizes

For calculation of glass sizes for doors with rail, refer to the single and double door calculation sheets on pages 8-9.

3010 / 3012 door rail installation guidelines

Glass preparation:

1. Lay door blank flat onto two trestles.
2. Ensure that the glass is dry and free from dust or grease.

The surface of the clamping area on the glass can be sanded to provide a key for the tape.

Apply rail inner clamps:

1. Remove the backing paper on the inside surfaces of the rail inner clamps and apply the clamps to the glass using the self adhesive tape.
2. Assemble the two part clamps onto the glass and tighten using the short bolts (20 x 5mm) supplied. Ensure that the clamps are centred evenly along the door width leaving around 50mm free at both ends. (Doors up to 1000mm require 2 no. clamps each 400mm long, doors over 1000mm will require 3 no. clamps. Clamps may be cut in half if there is insufficient rail for a full length).
3. The clamps should be left for a minimum of 3–4 hours for the adhesive tape to cure, ideally though 24 hours should be allowed.

Fit bottom rail:

Normally the bottom rail is fitted first.

1. Slide the rail over the fixed inner clamps ensuring that the teeth engage in the upper portion of the rail.
2. The rail should be 10mm shorter than the glass width to allow for the end caps. Once the rail is centred onto the door it can be fixed to the inner clamps by bolting up through the lower portion of the rail using the long bolts (22 x 8mm) and square clamping blocks supplied. (This is best done using a socket set fitted with a 12mm socket).
3. We recommend that each clamp is secured with two bolts, if further holes need to be drilled a 9mm drill bit should be used.
4. It is important that the inner clamps are set out so as not to clash with the pivot and lock fittings. The rail is now firmly fixed.

Set bottom pivot:

1. The pivot point can now be set by fitting the ML100 bottom bracket and 9123 bottom door strap - normally 65mm in, measured to the centre of the hole in the bottom door strap.
2. Bolt the square blocks onto the ML100 bracket and attach the 9123 door strap using only one screw. Slide the square blocks of the ML100 bracket into the centre portion of the rail, tighten the block which is accessible once the strap is in position, remove the one screw holding the bottom door strap, tighten the other square block, finally re-fit the bottom door strap using all four screws (27 x 6mm).
3. The ML100 bracket and bottom door strap are essential whether a floor spring or free swing pivot bearing are used.

Cont.....

Fit bottom rail lock (if required):

1. If the bottom rail is lockable the DRL5025 lock can now be fitted.
2. Bolt the black plastic escutcheon blocks to the outside faces of the rail, through the pre-drilled holes, then bolt the lock body into the lower portion of the rail through the flat spacer plate provided into the clamping spacer blocks, so that the keyhole in the lock lines up with the punched hole in the rail. Do not overtighten bolts / screws as this can make the lock operation stiff.
3. The europrofile cylinder can now be inserted through the rail and lock body with the key in position. Once the key has been removed the lock and cylinder can be secured with the screws and clamping blocks supplied.
4. The escutcheon should be the last component fitted to avoid damage to the finish.

Fit top rail (if required):

The top rail can now be clamped on using the same procedure as the bottom rail

Set top pivot (if using floor spring):

1. The MS100 bracket is fitted to the top rail in a similar way to the ML100 bottom bracket and in exactly the same pivot point position to ensure the door is plumb.
2. The MS100 bracket is designed to pivot on the 9116 retractable top pivot bearing, via the supplied 9117 lower component (c/w the 9116)

Set top pivot (if using transom closer):

If a transom closer is to be used instead of a floor spring then the MS100 bracket is substituted with the DR850TI insert. In this case a rectangular notch should be cut out of the top rail on one side so that the door can be tilted up into position around the spindle of the transom closer. This notch can then be covered with a small plate, not supplied.

Fit top rail lock (if required):

If the top rail is lockable the DRL5025 lock can be fitted in the same way as the bottom one.

Fit end caps:

Finally the end caps are fitted with the screws supplied into the square blocks fitted in the centre portion of the rail. Protective tapes can now be removed.

Bottom rail component list

1 No. Rail (PSS, SSS Finish) 10mm shorter than width of glass



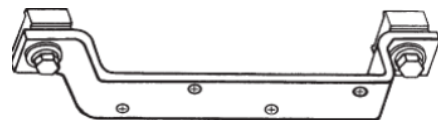
2 No. Inner Clamps either 10mm or 12mm glass. For doors over 1000mm add 1 extra clamp



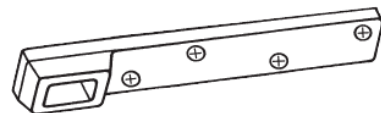
1 Pair End Caps (Mill, PSS, SSS Finish)



1 Bracket ML100



1 Door Strap 9123



Extra Requirements;

If lock is required then use DRL5025.



If the door has a transom closer or is free swinging then add 1 No. pivot 9115.



If the door has a floor spring then add GTS840 to the list.

For doors 800mm maximum width : specify Size 1
For doors 900mm maximum width : specify Size 2
For doors 1100mm maximum width : specify Size 3



Drawings **Not** to Scale

All measurements are in millimetres

Last updated 21st April 2021

Top rail (pivot or floor spring) component list

1 No. Rail (PSS, SSS Finish) 10mm shorter than width of glass



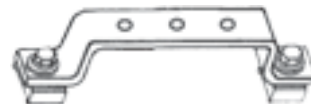
2 No. Inner Clamps either 10mm or 12mm glass. For doors over 1000mm add 1 extra clamp



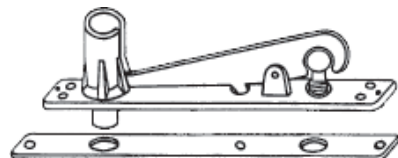
1 Pair End Caps (Mill, PSS, SSS Finish)



1 Bracket MS100



1 Top Centre 9116



Extra Requirements;

If lock is required then use DRL5025.



Top rail (transom closer) component list

1 No. Rail (PSS, SSS Finish) 10mm shorter than width of glass



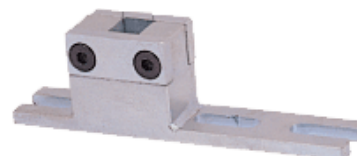
2 No. Inner Clamps either 10mm or 12mm glass. For doors over 1000mm add 1 extra clamp



1 Pair End Caps (Mill, PSS, SSS Finish)



1 No. Insert DR850TI

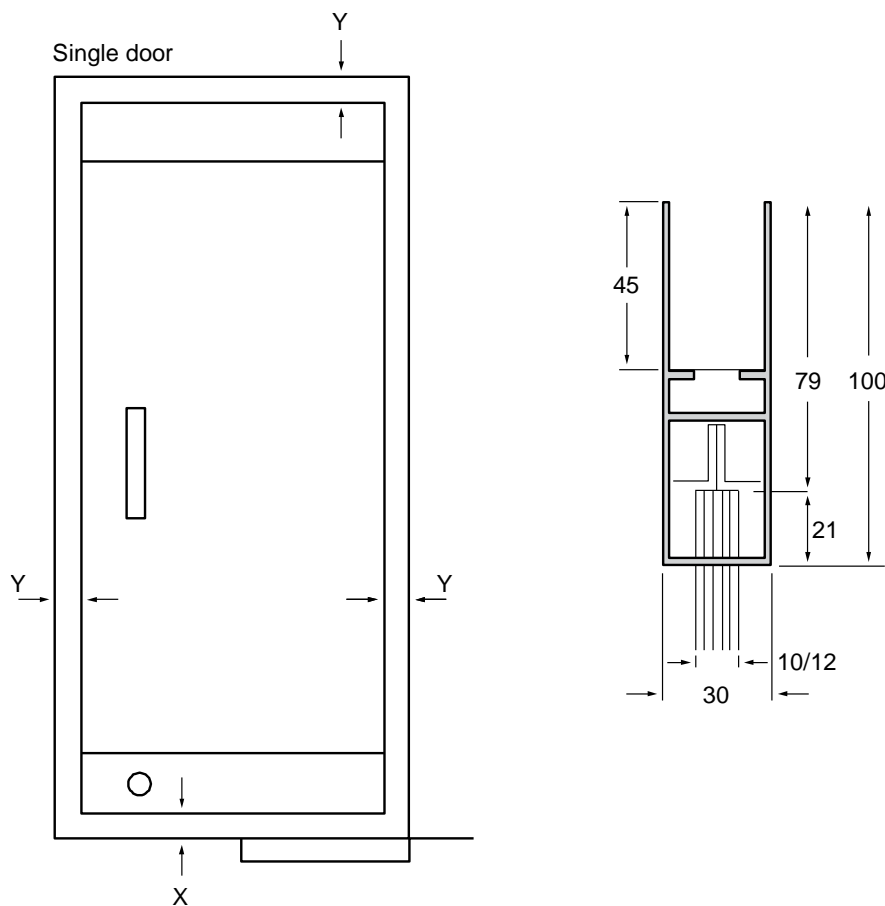


Extra Requirements;

If lock is required then use DRL5025.



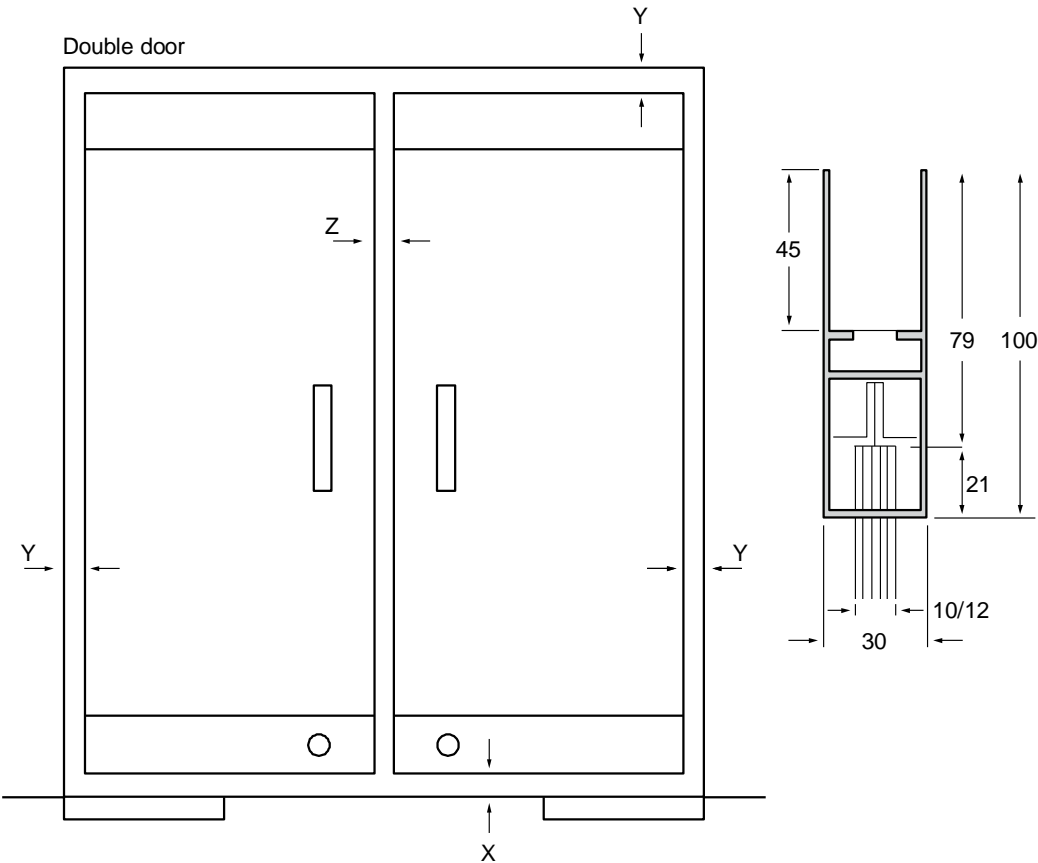
Glass sizes – door rail (single)



Glass sizes;

X = 8mm			
Y = 3mm			
Glass sizes			
opening height		x width	
height	mm	width	mm
- 3	(Y)	-3	(Y)
- 8	(X)	-3	(Y)
-79			
-79			
Glass Height	mm	glass width	
Glass =	mm high x	mm wide	
Door rails =	-10 (end caps) =		

Glass sizes - door rail (double)

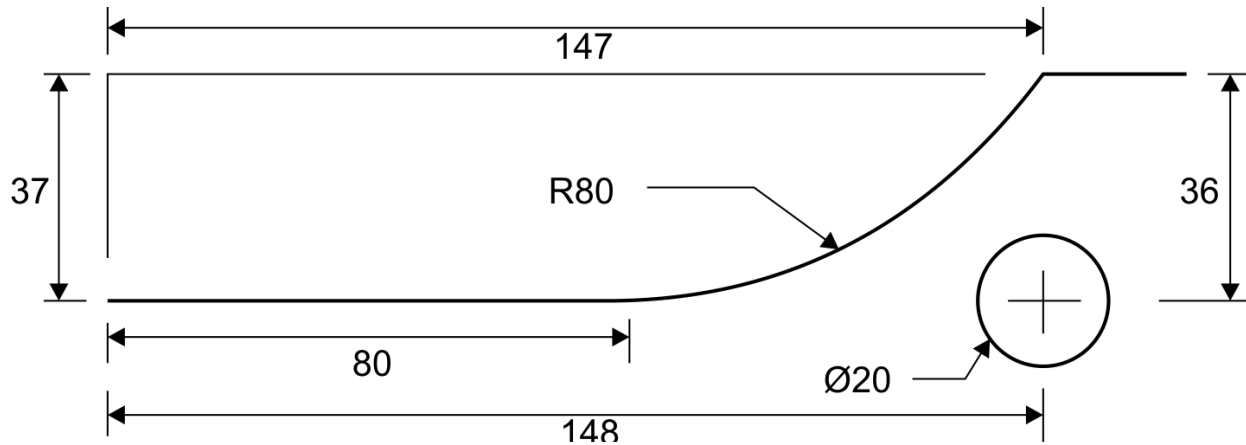


Glass sizes;

X = 8mm			
Y = 3mm			
Z = 4mm			
Glass sizes			
opening height		x width	
height	mm	width	mm
- 3	(Y)	- 3	(Y)
- 8	(X)	- 3	(Y)
- 79		- 4	(Z)
- 79			
Glass Height	mm	÷ 2	glass width
Glass =		mm high x	
		mm wide	
Door rails =		-10 (end caps) =	

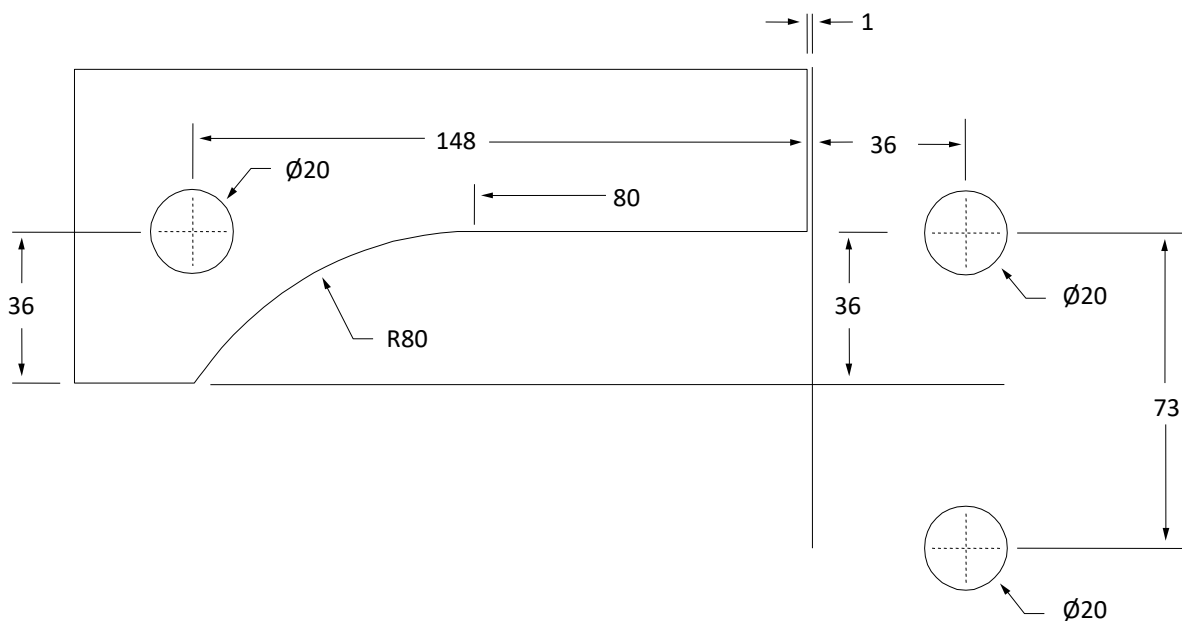
GT10, GT20, GT22, GT30

Notching detail for corner patch fittings



GT40, GT40K, GT40S, GT40KS

Notching detail

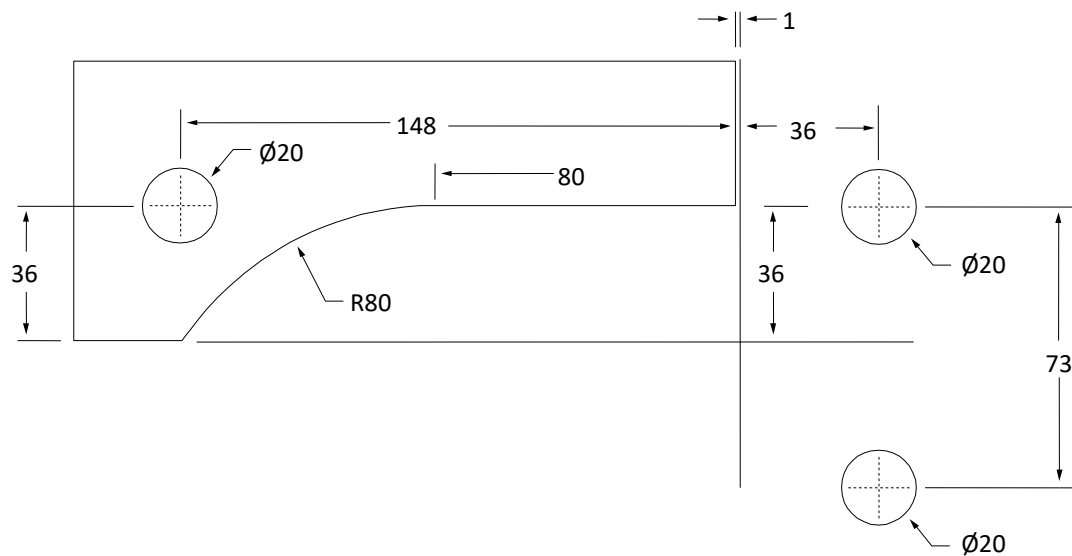


Drawings **Not** to Scale

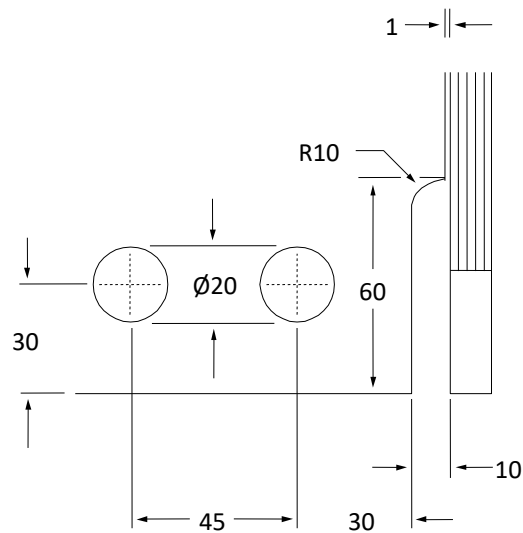
All measurements are in millimetres

Last updated 21st April 2021

GT41, GT41K



Fin notching detail



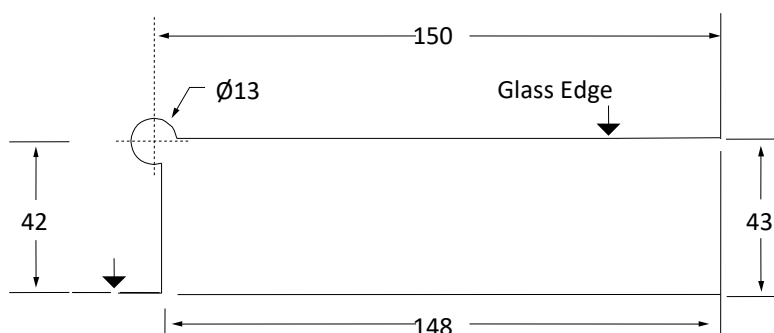
Drawings **Not** to Scale

All measurements are in millimetres

Last updated 21st April 2021

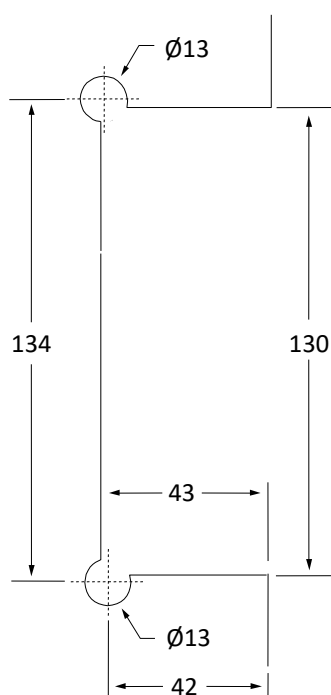
GL50S

Notching detail



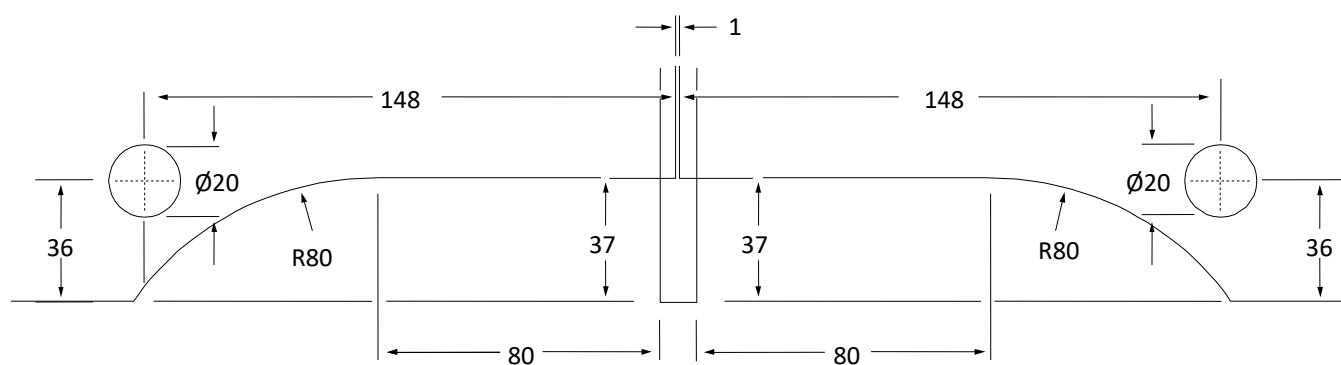
GL50S/CL, GL50K, GL53, GL53K

Notching detail

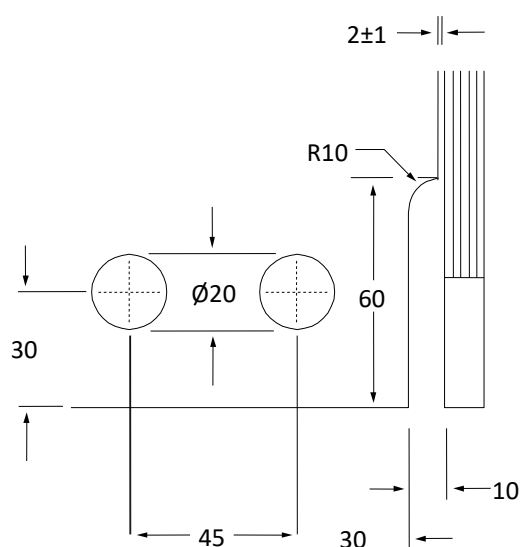


GT51

Notching detail

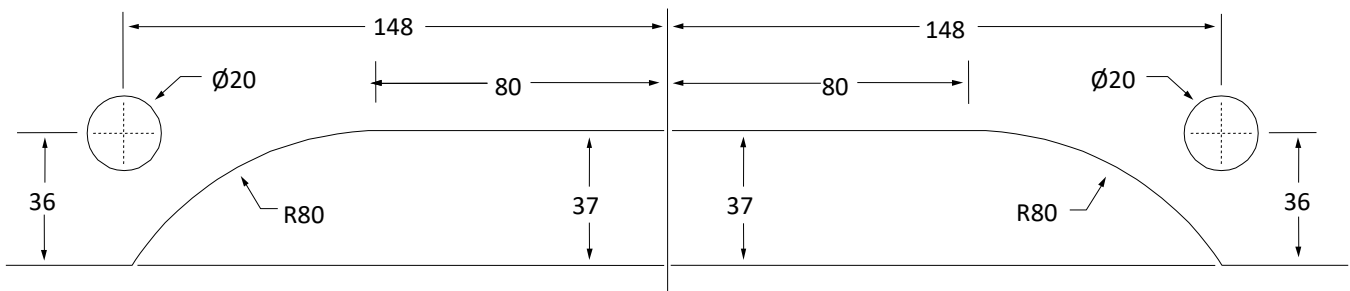


Fin notching detail



GL50/2KS

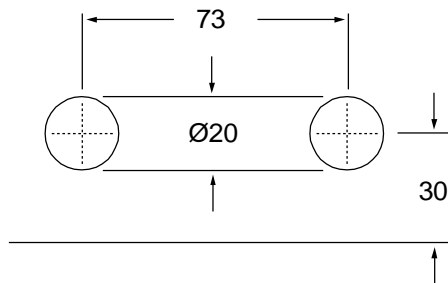
Notching detail



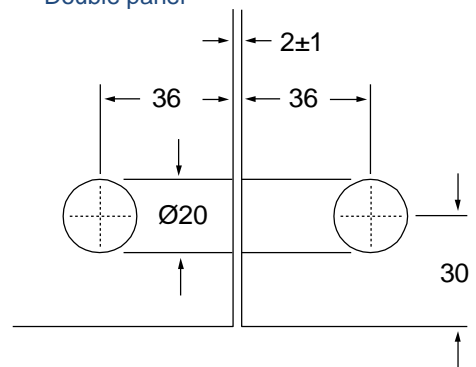
GT70

Notching detail

Single panel

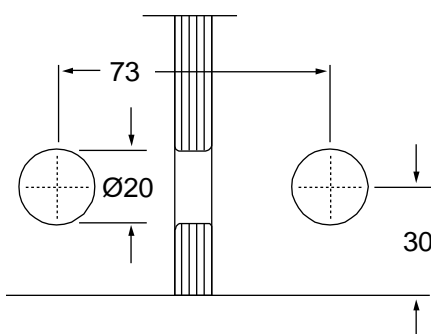


Double panel

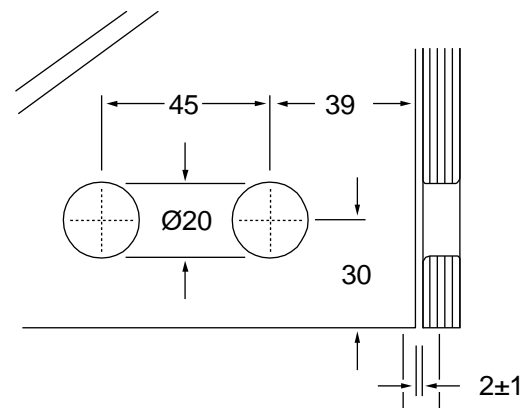


GT71

Notching detail



Fin notching detail

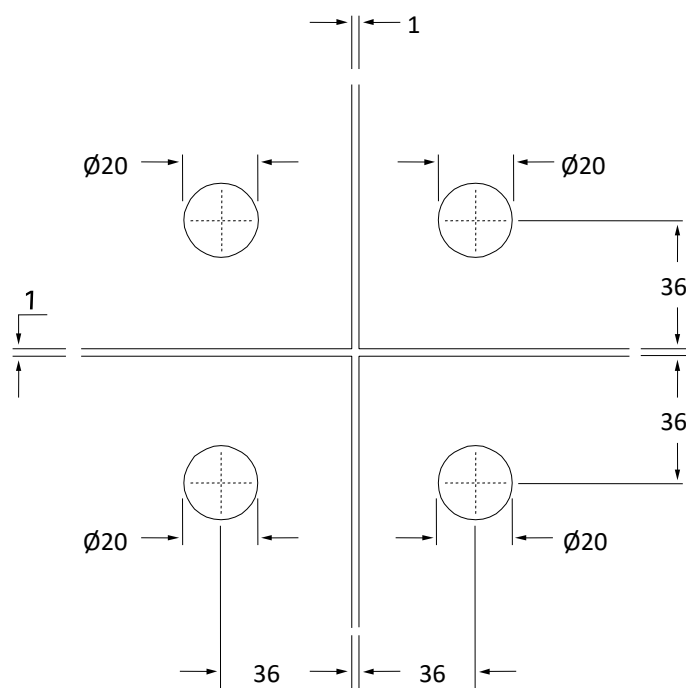


Drawings **Not** to Scale

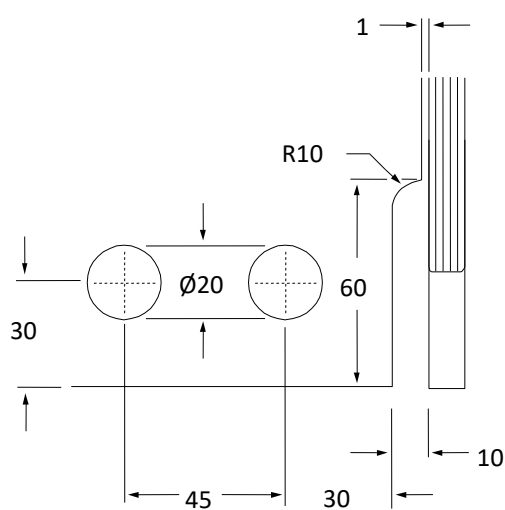
All measurements are in millimetres

Last updated 21st April 2021

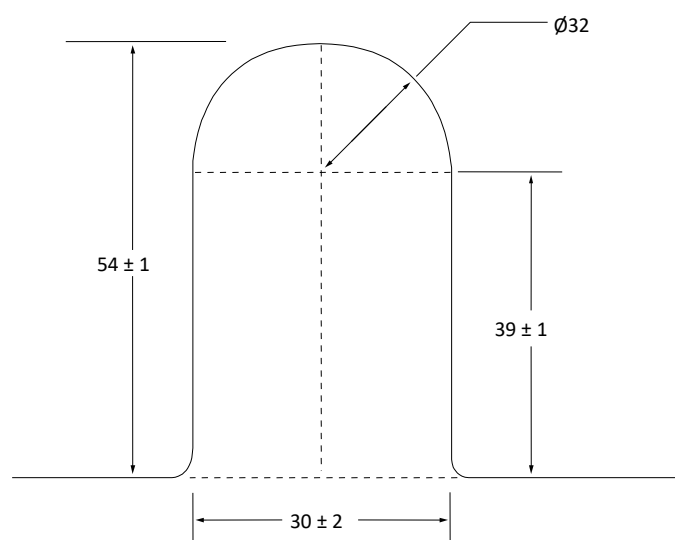
GT80, GT81 Notching detail



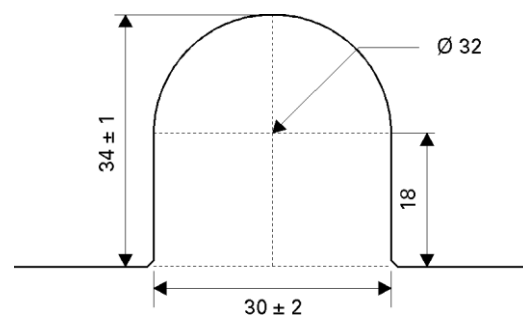
Fin notching detail



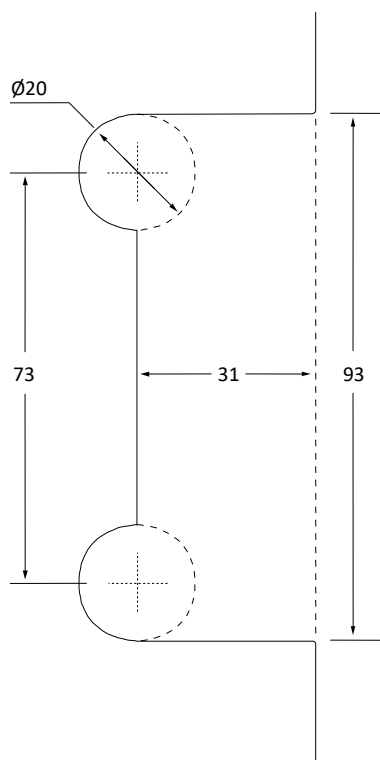
GL52 Notching detail



GL52/K Notching detail

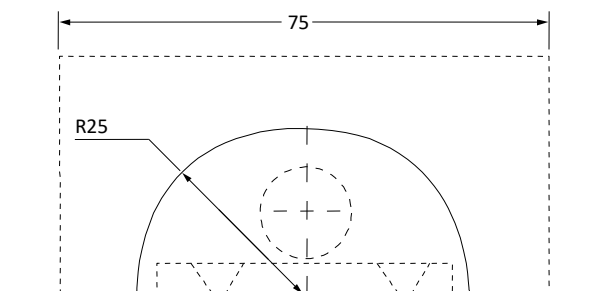


GT73W Notching detail

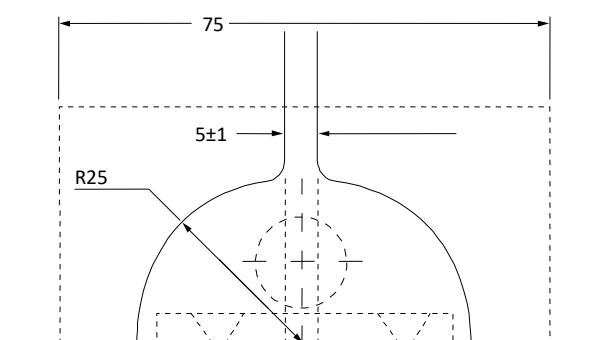


CL42.1 Clamp

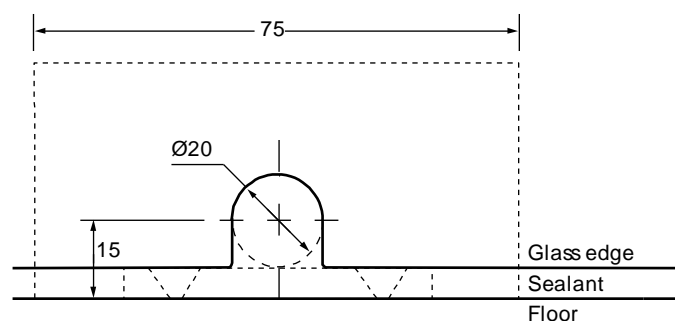
Clamp mounted within glass flush with floor



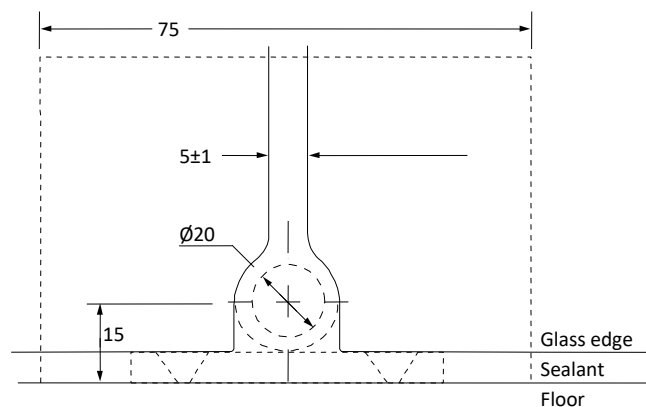
Clamp joining glass panels within glass flush with floor



Clamp mounted within glass clear of the floor



Clamp joining glass panels clear of the floor



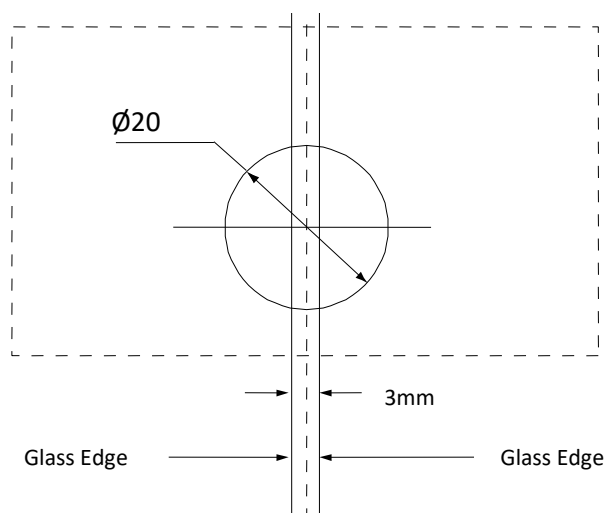
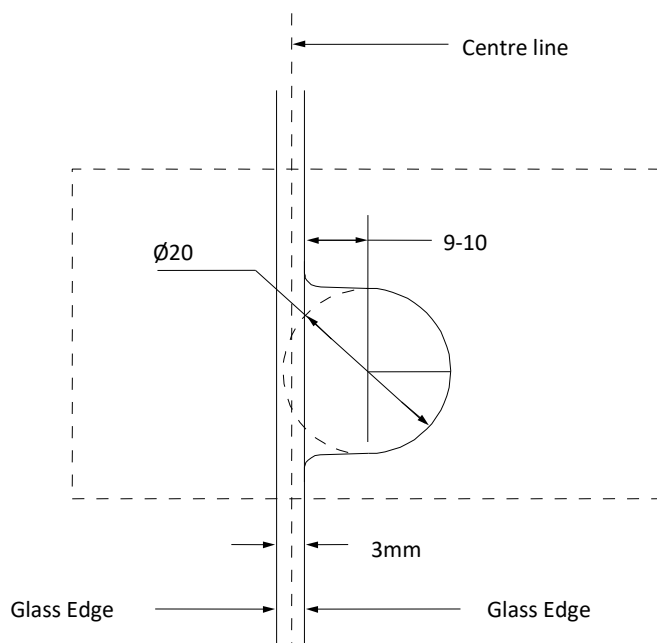
Drawings **Not** to Scale

All measurements are in millimetres

Last updated 21st April 2021

CL42

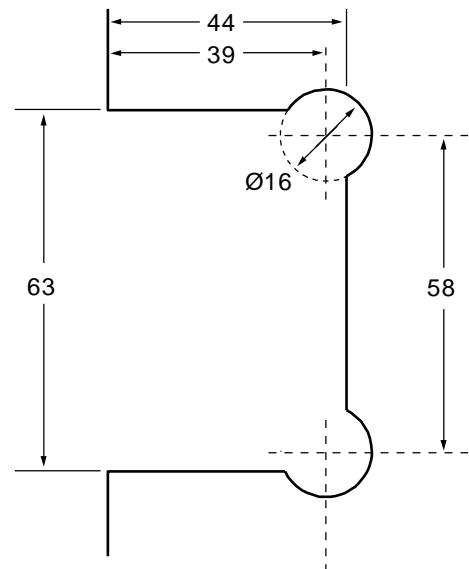
2 Notching choices



GX992.1, GX992.1B

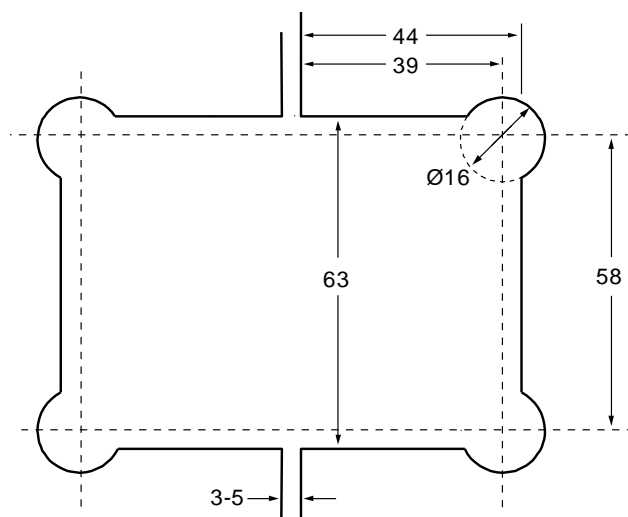
Notching details

Measurement from edge of glass to wall = 10mm

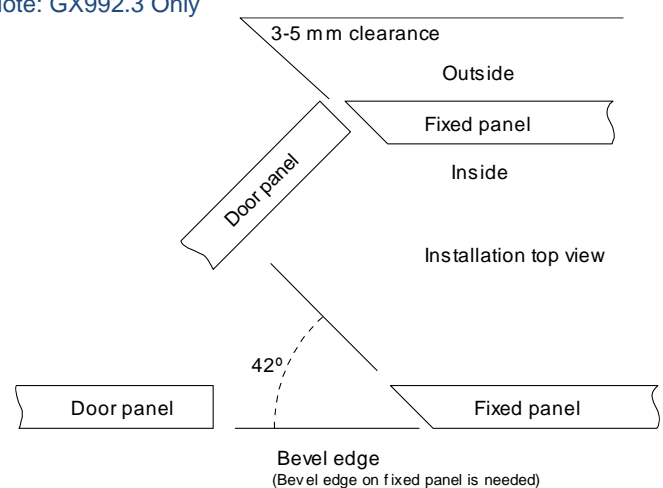


GX992.2, GX992.3, GX992.4

Notching details



Note: GX992.3 Only



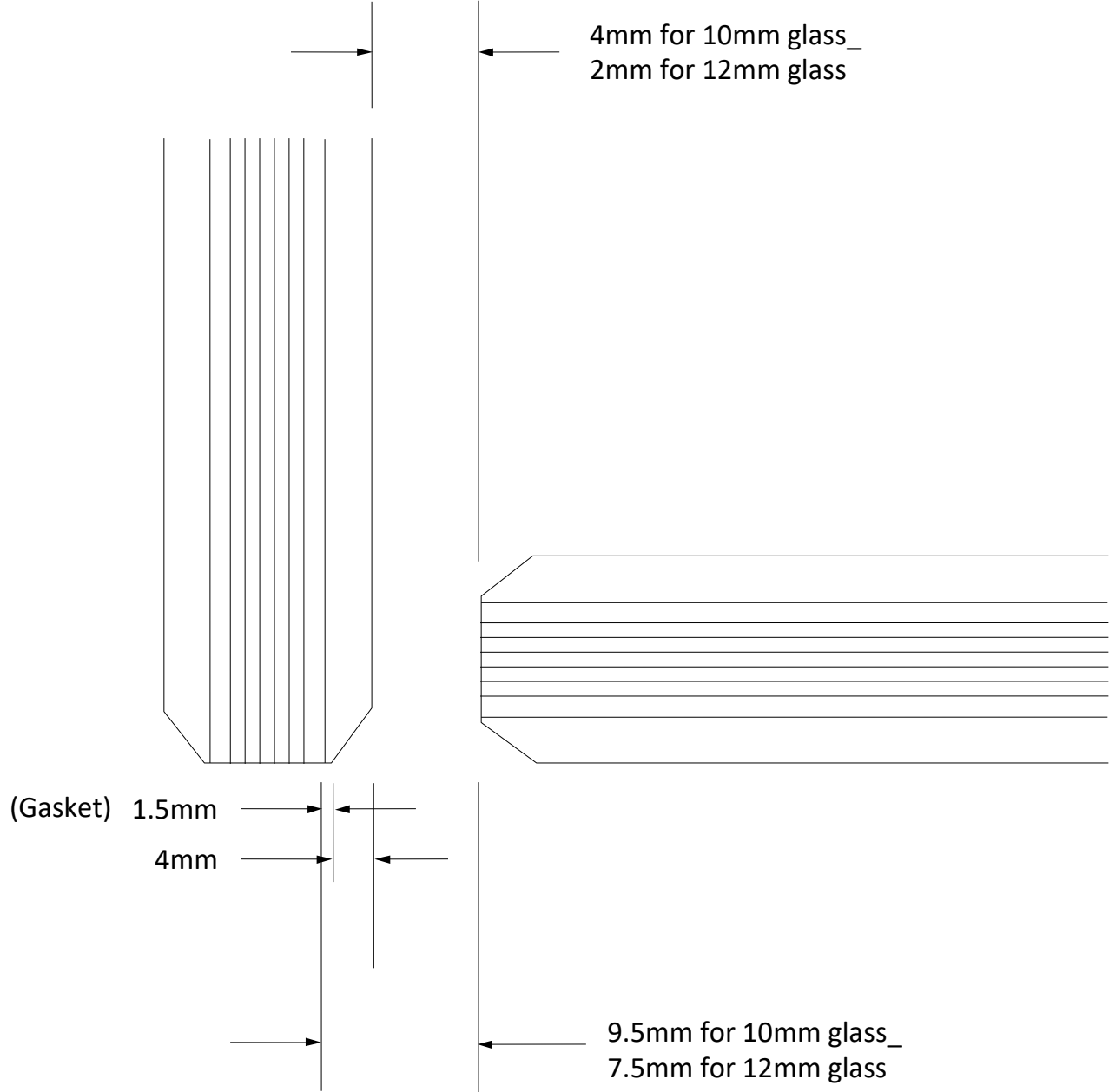
Drawings **Not** to Scale

All measurements are in millimetres

Last updated 21st April 2021

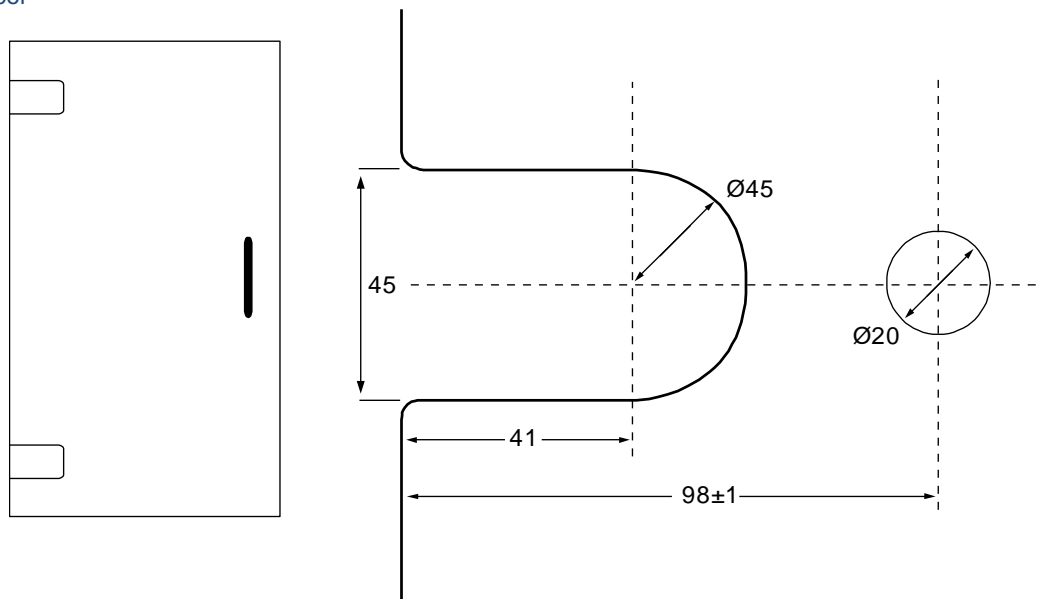
GX992.4

Hinge detail



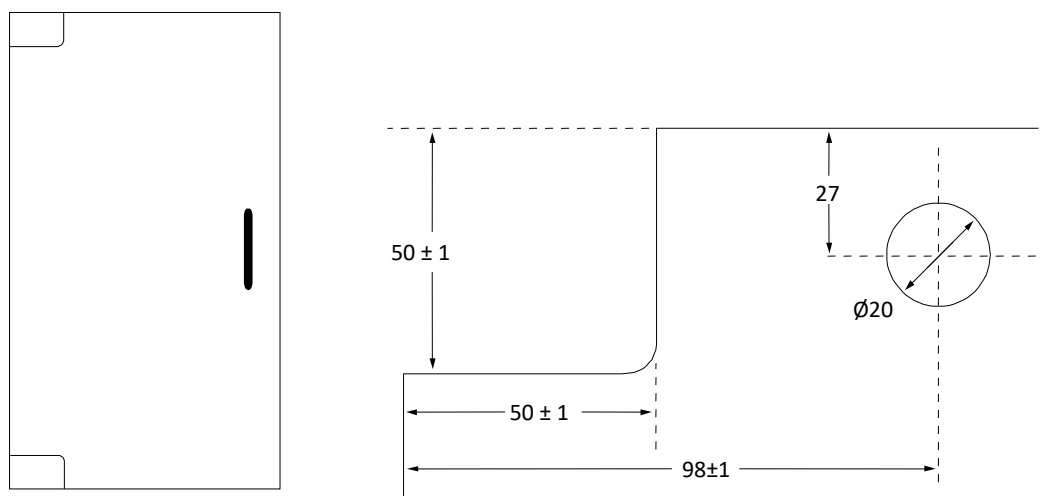
GX991.1, GX991.1B, GX991.2*, GX991.3, GX991.4, GX991.5 Notching details

Mounted within door



*5-6mm gap between door + side panel for GX991.2

Mounted at the corner (not suitable for showers)



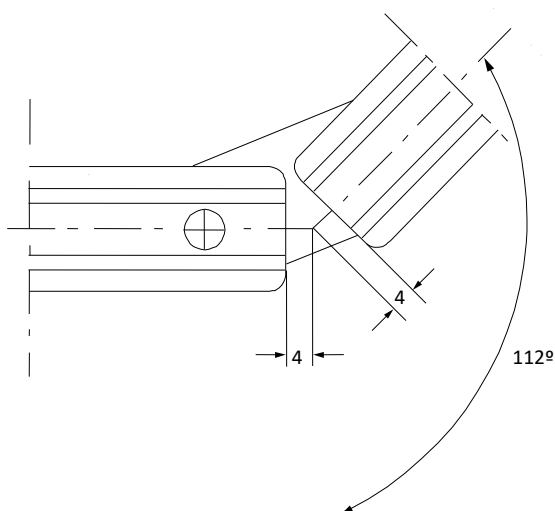
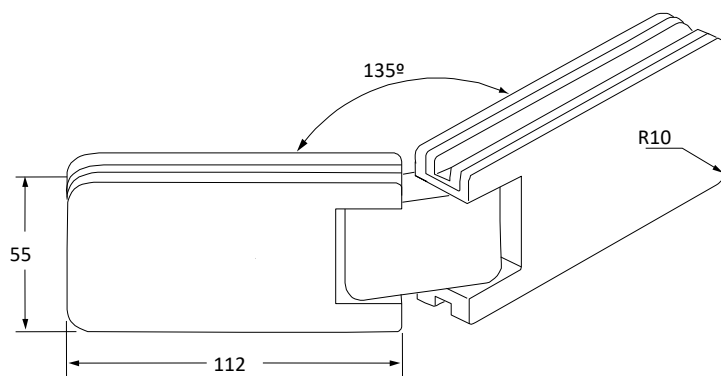
Drawings **Not** to Scale

All measurements are in millimetres

Last updated 21st April 2021

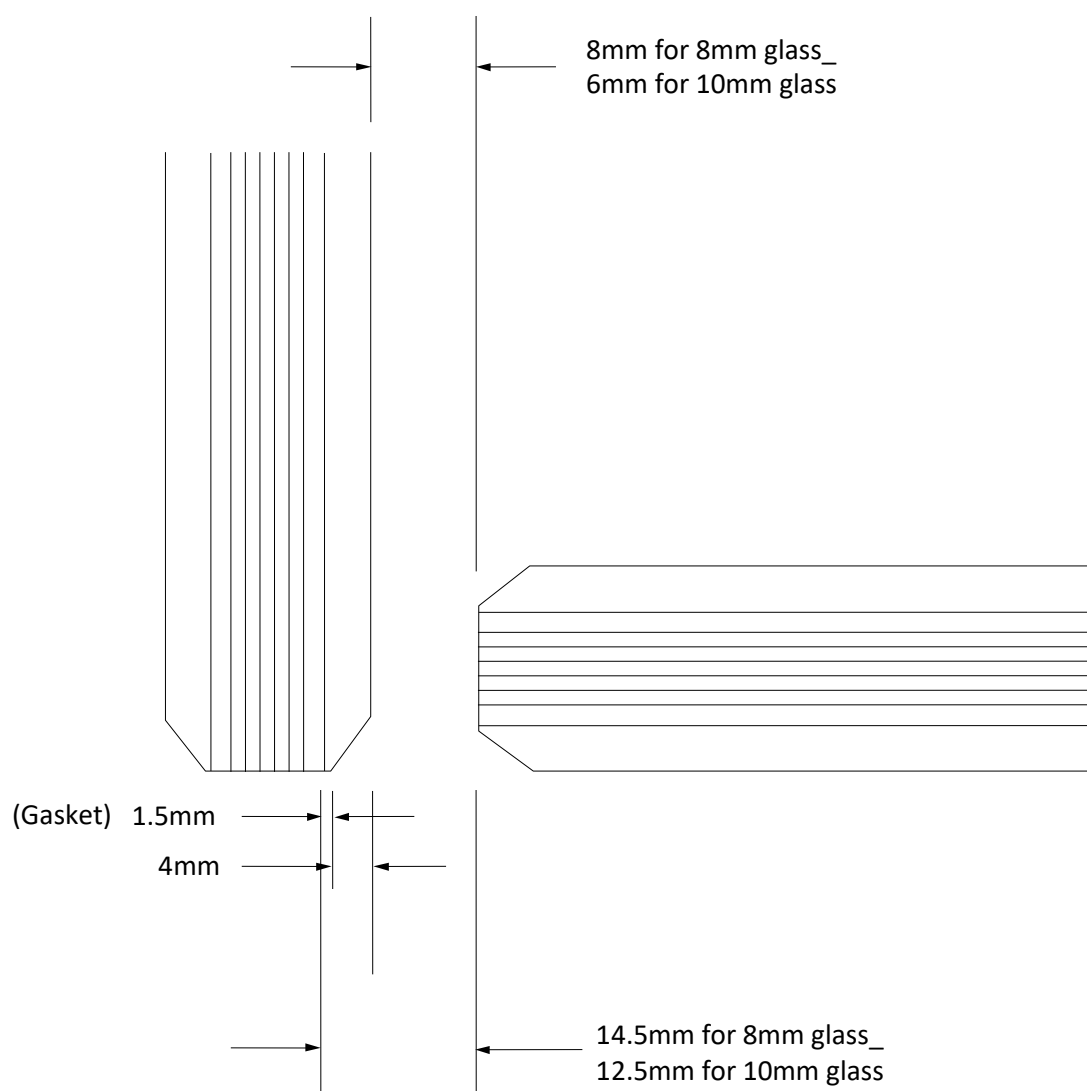
GX991.3

Hinge detail



GX991.4

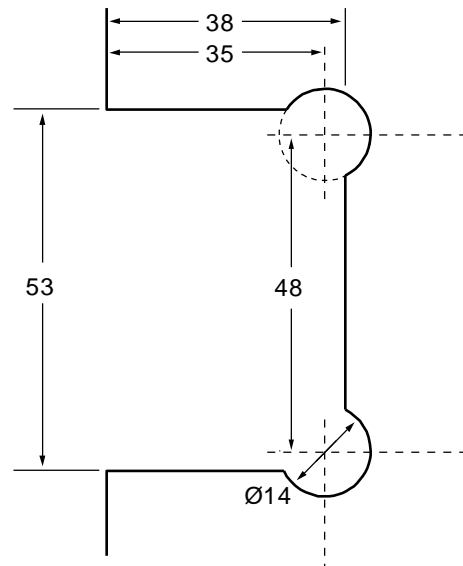
Hinge detail



GX680.1, GX680.1B

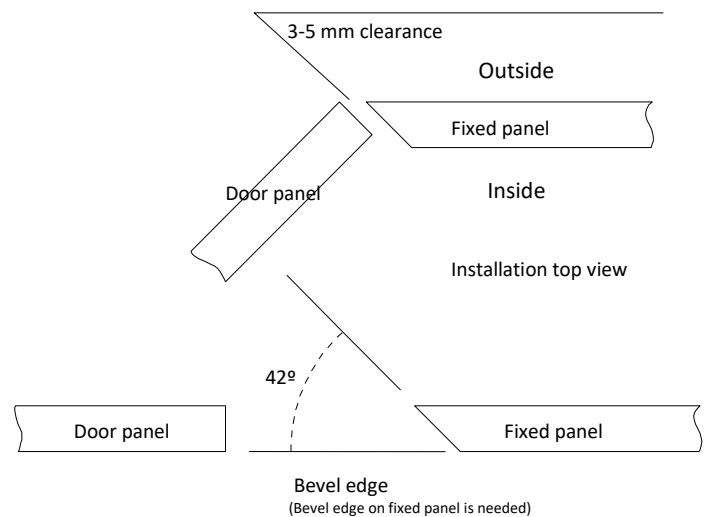
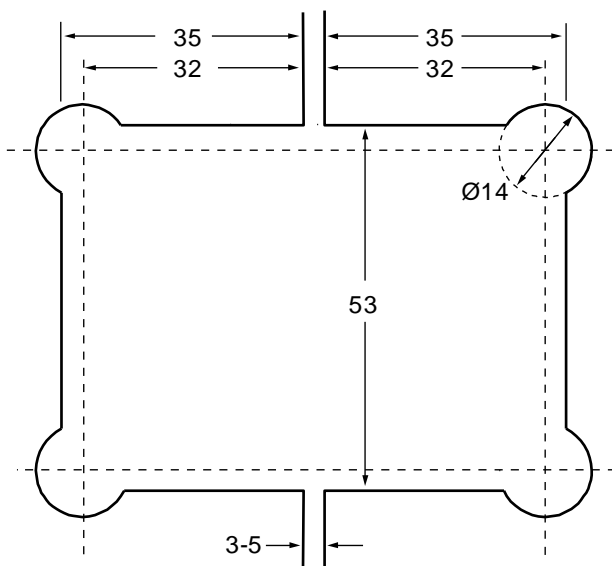
Notching detail

Distance from edge of glass to wall = 8mm



GX680.2, GX680.3, GX680.4

Notching detail



GX680.3 Only

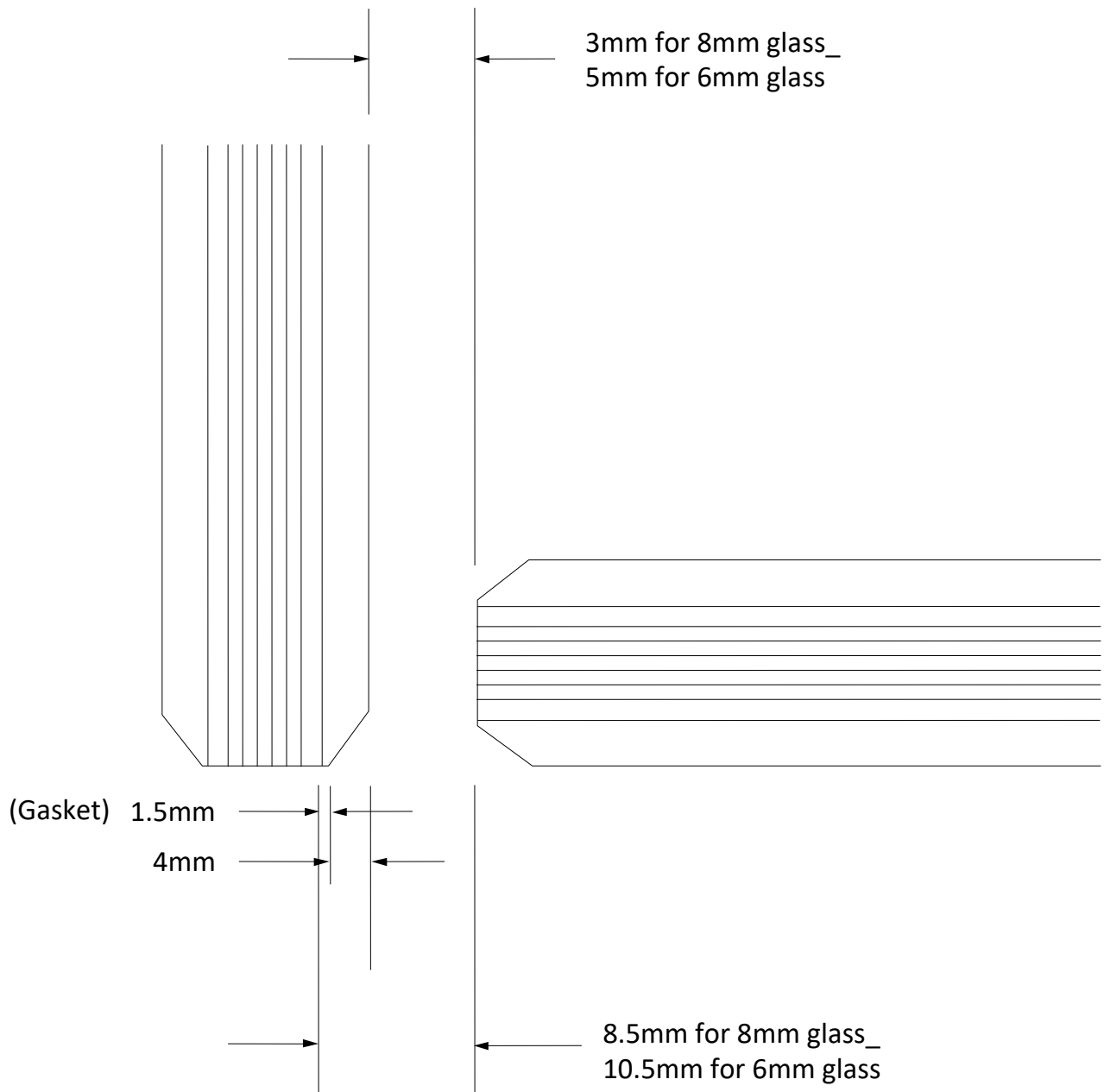
Drawings **Not** to Scale

All measurements are in millimetres

Last updated 21st April 2021

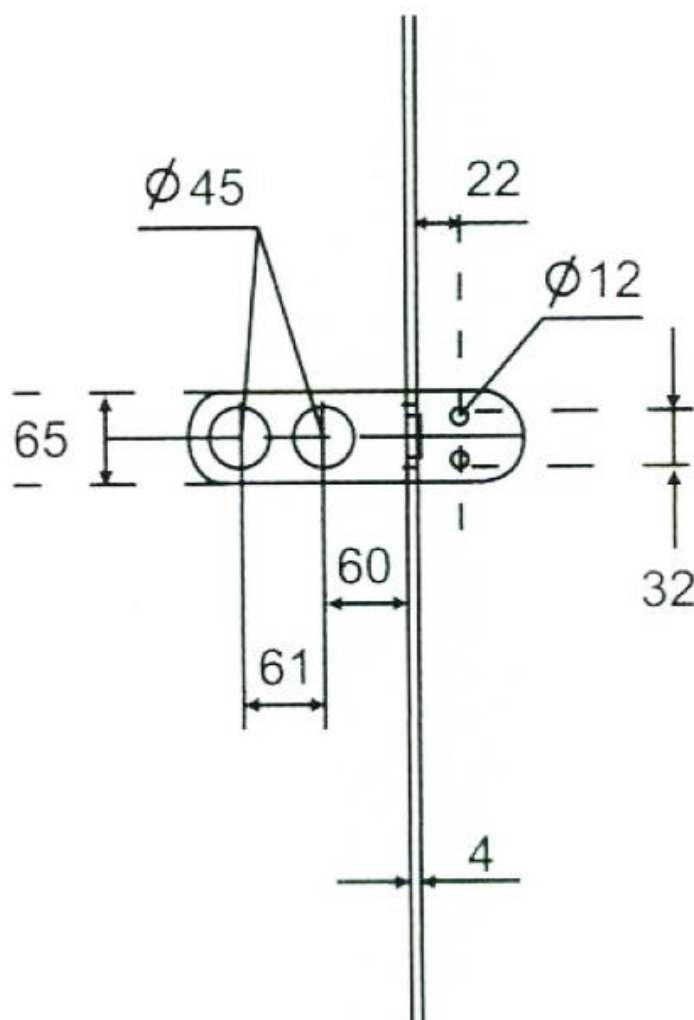
GX680.4

Hinge detail



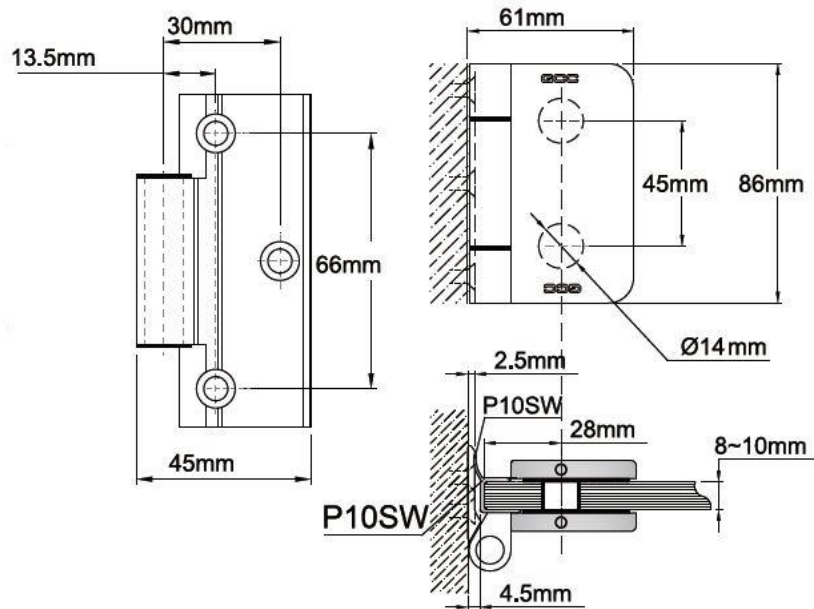
LH-30, LH-30S, LH-32

Notching detail



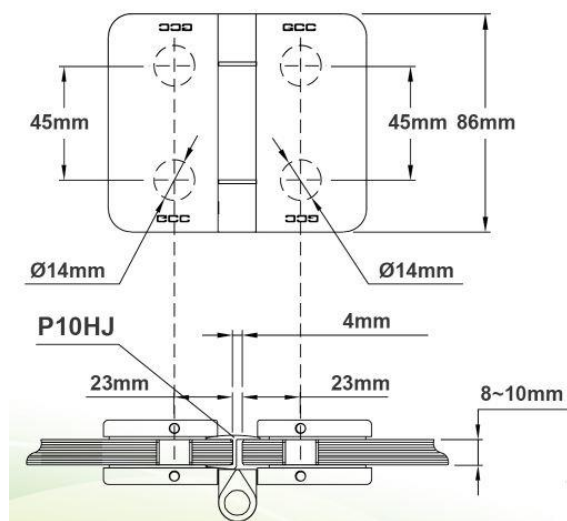
LH-86W

Hinge detail



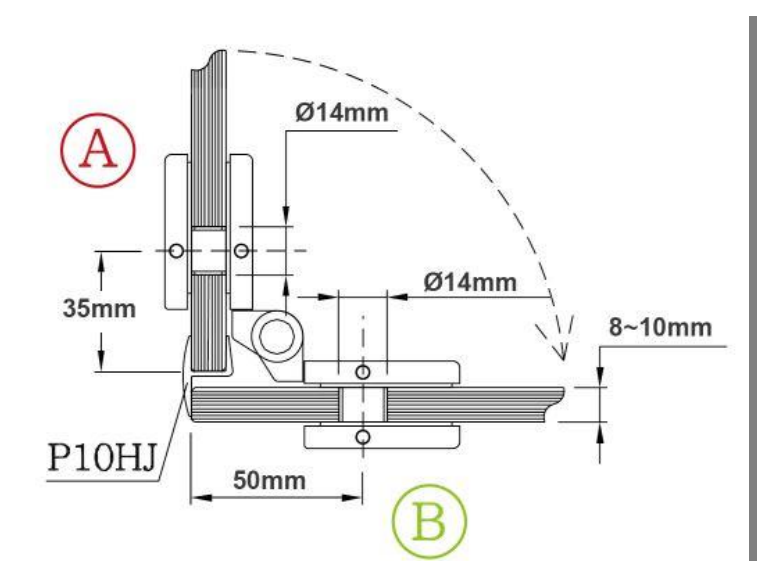
LH-86.2

Notching detail

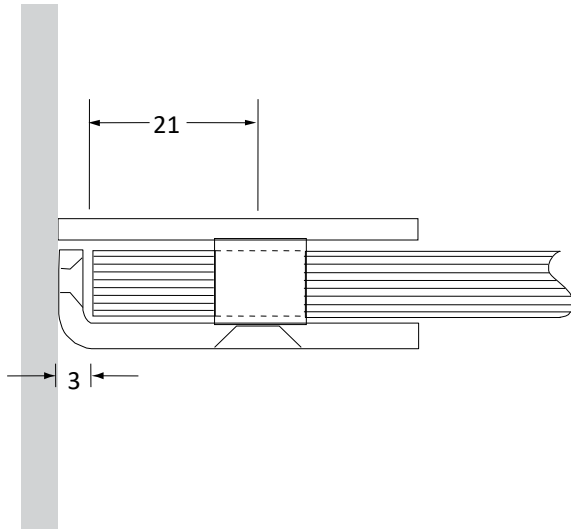


LH-86.4

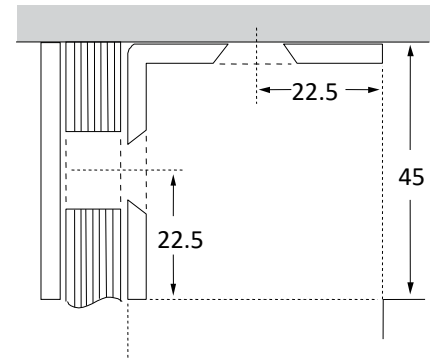
Notching detail



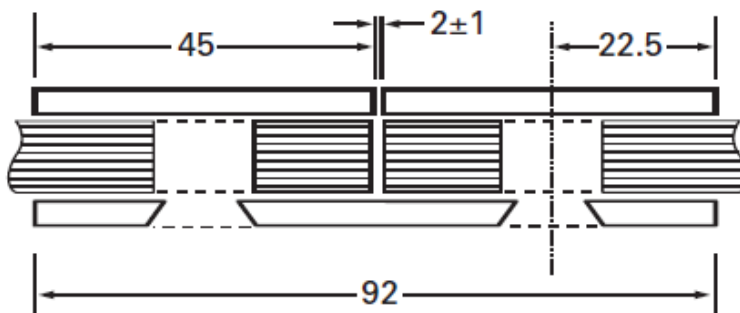
GX45.1 - 16mm Ø Hole



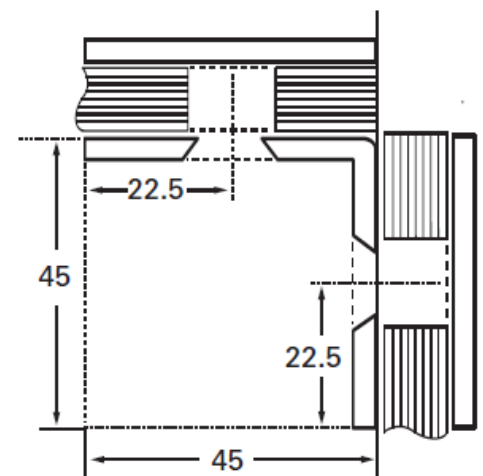
GX45.1L - 16mm Ø Holes



GX45.2 - 16mm Ø Holes



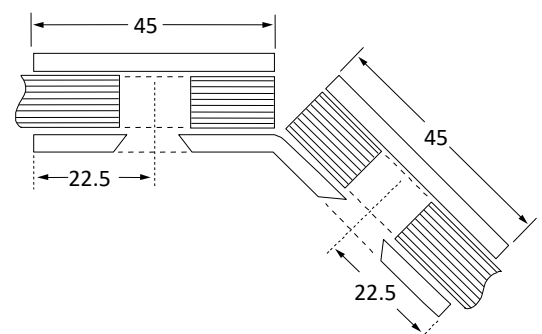
GX45.4 - 16mm Ø Holes



GX45.3 - 16mm Ø Holes

Note:

These details are based on 8mm Glass. If using 10mm or 12mm glass, holes may need to be slotted. Please consult your toughener for advice.

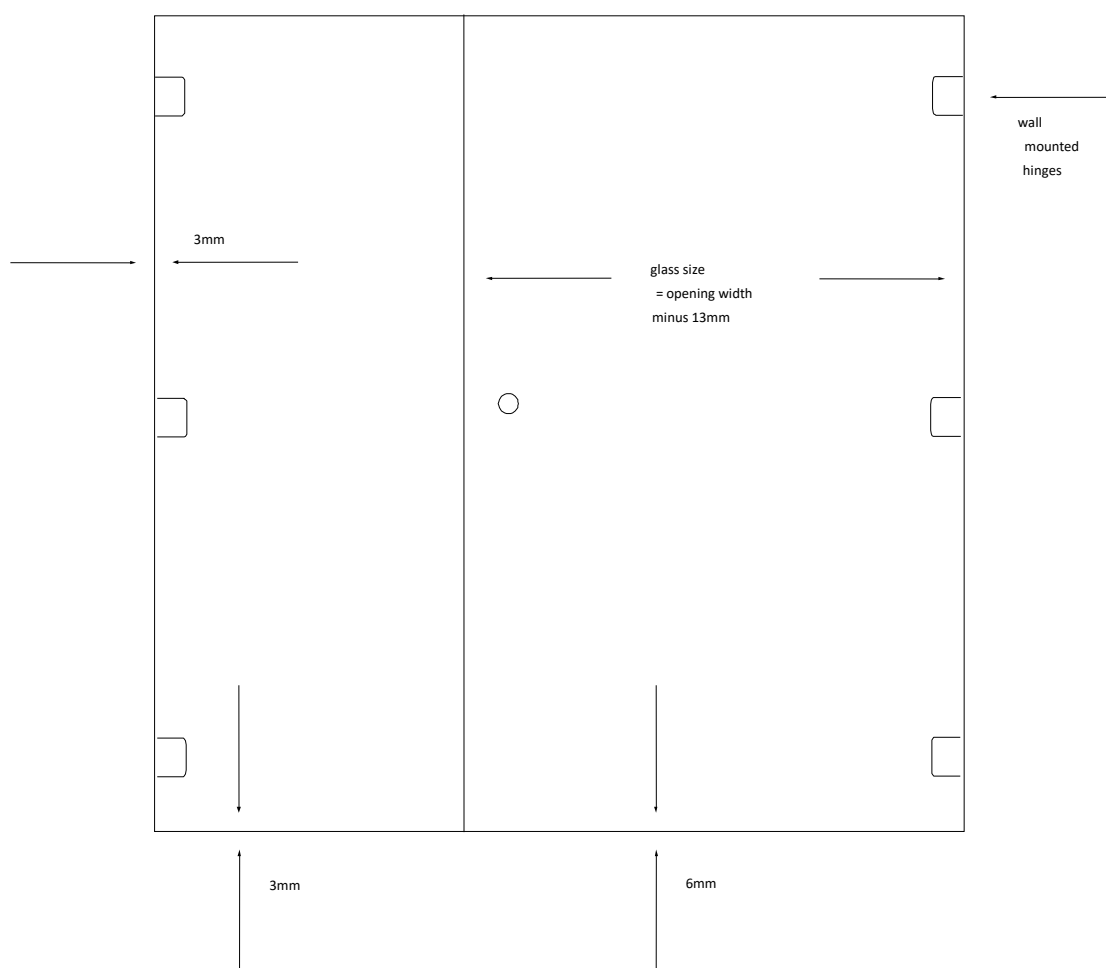


Drawings **Not** to Scale

All measurements are in millimetres

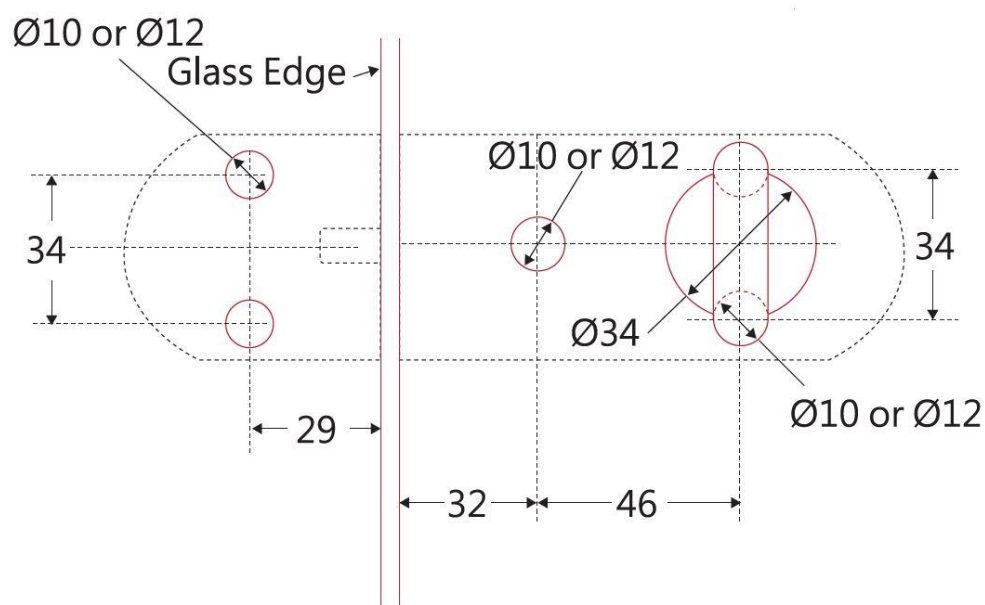
Last updated 21st April 2021

Shower door clearances typical installation

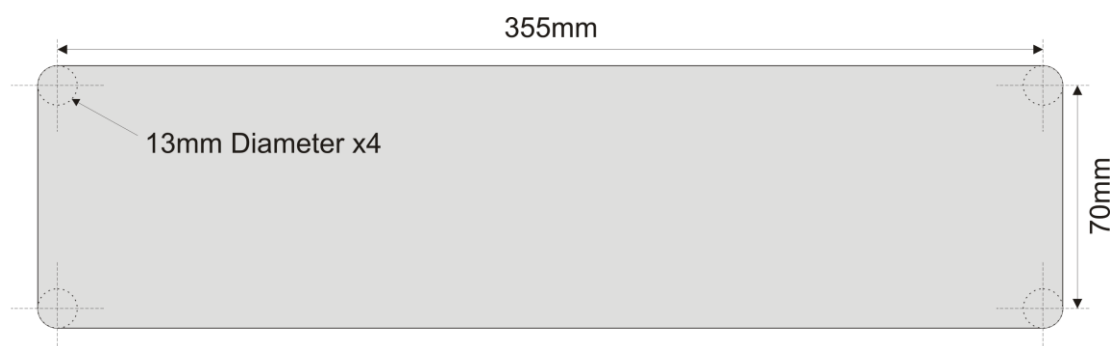


IDL-52

Notching detail

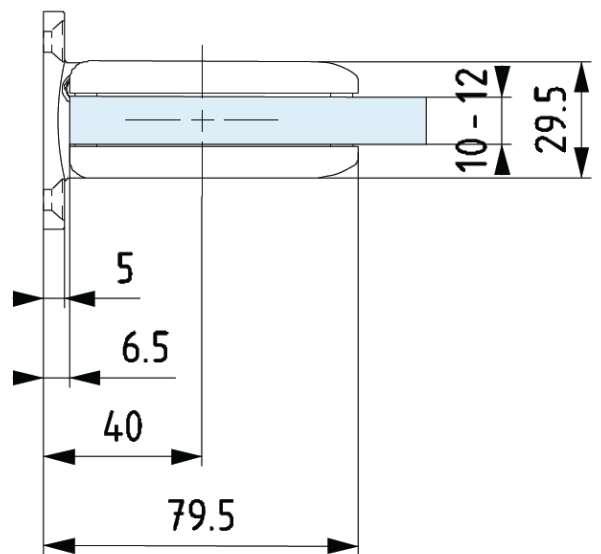
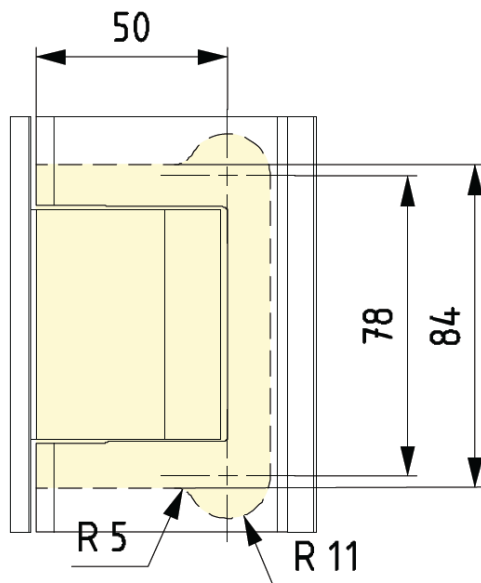


LP102

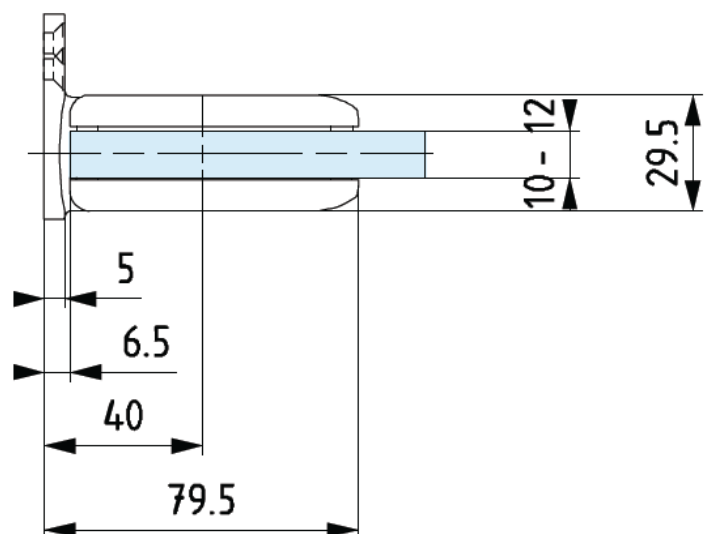
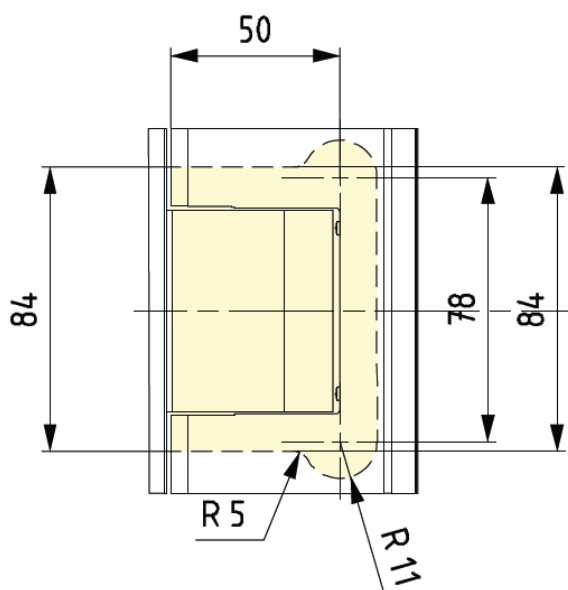


Biloba self close hinges

8010



8011



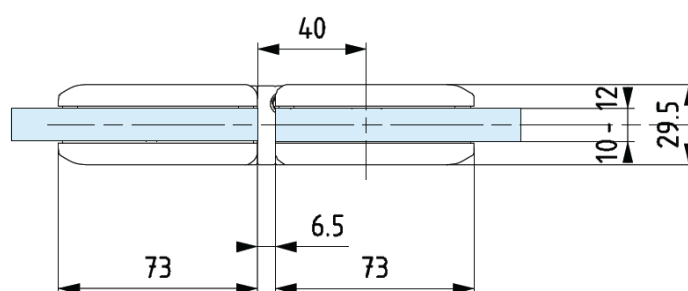
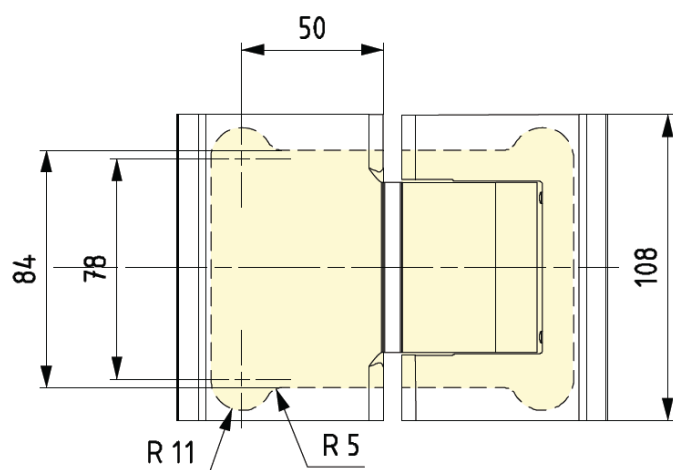
Drawings **Not** to Scale

All measurements are in millimetres

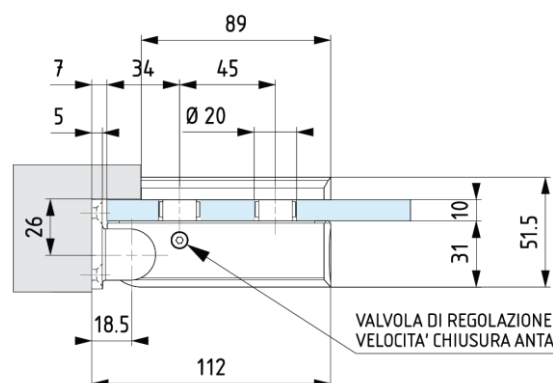
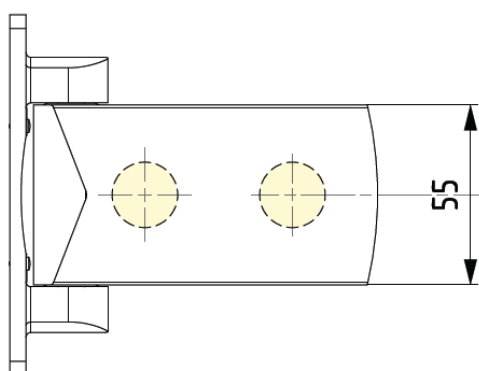
Last updated 21st April 2021

Biloba self close hinges cont.....

8015

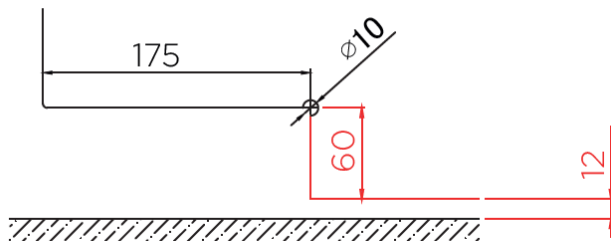


8060



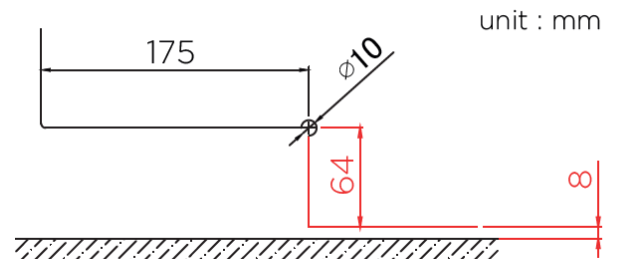
HGT100 – Bottom Patch Fitting

Notching detail



There are two different glass cut outs for the HGT-100, resulting in different bottom clearances.

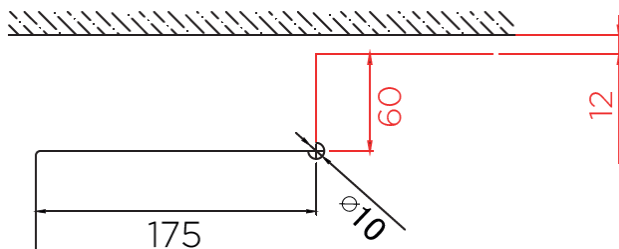
You can opt for the reduced clearance gap if the floor condition is good and level.



GCC would recommend the customer cuts 60mm depth (bottom gap 12mm) to allow for most floor condition.

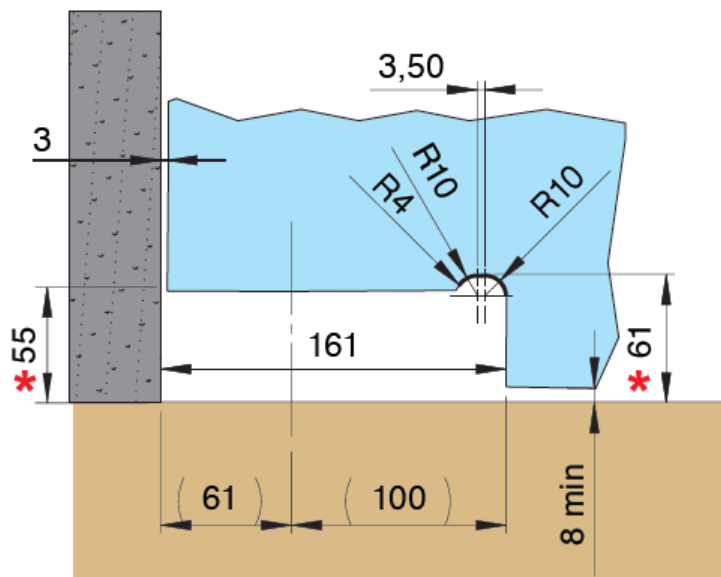
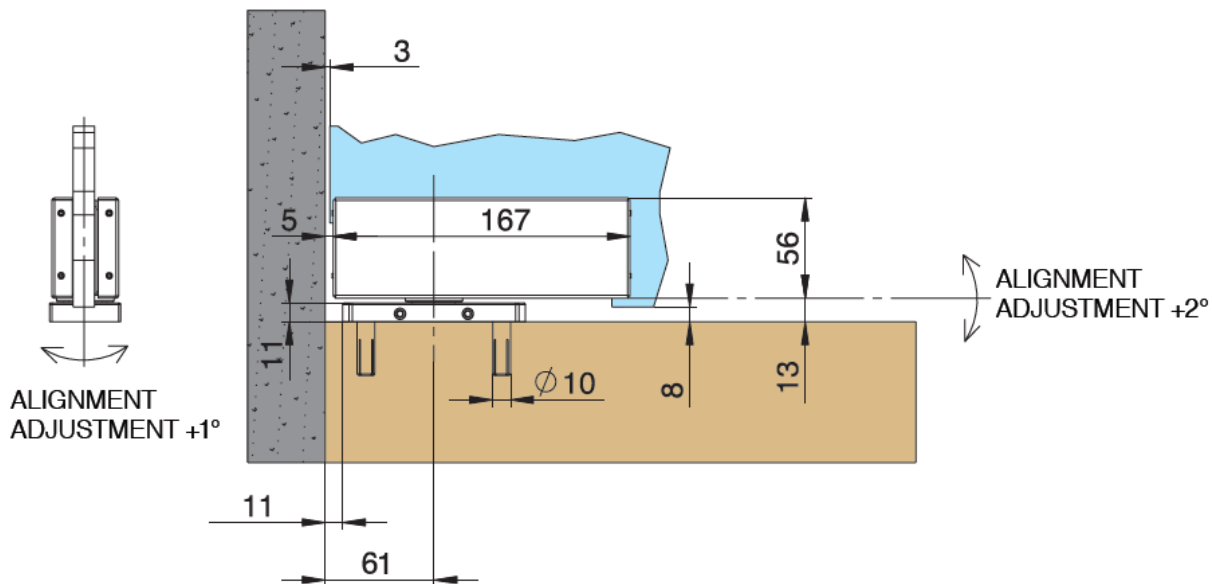
HGT200 – Top Patch Fitting

Notching detail



Unica Heel Spring – 101E 10

Notching detail



* Distance from floor

Page 35 of 63

G-Tech sliding door system (continued)

Glass door to glass side panel installation

Track Brackets (7) type GSD151C should be specified. If the end of the track abuts a 90° wall then we recommend the fixing of end bracket GSD440 in lieu of one bracket GSD151C.

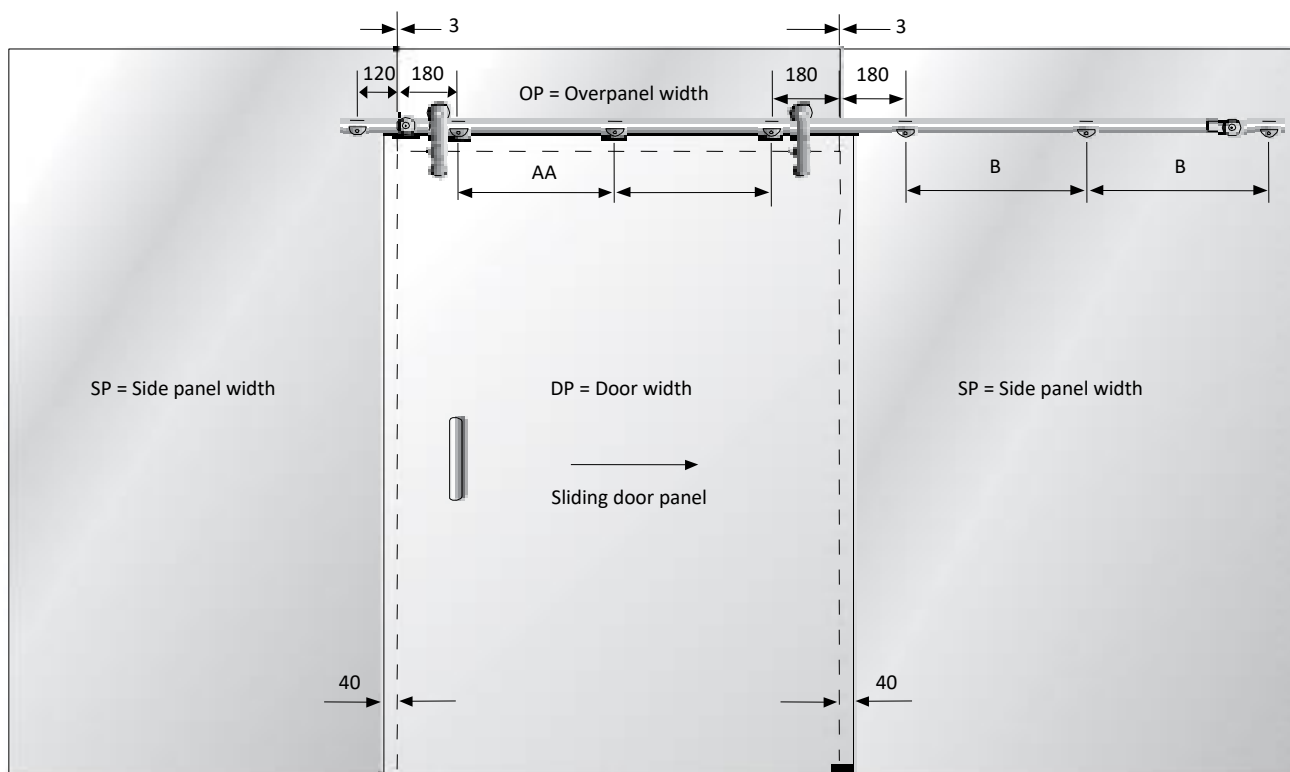
$$A = [OP - (180+180)] \div 2$$

$$B = [SP - (180+180)] \div 2$$

OP = Over panel width

SP = Side panel width

DP = Door panel width



Glass calculations

To calculate the blank size:

Width: Opening width plus 50mm or 80mm subject to type of installation

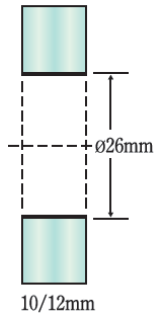
Height: Opening height plus 35mm minus 7mm for floor guide.

Drawings **Not** to Scale

All measurements are in millimetres

Last updated 21st April 2021

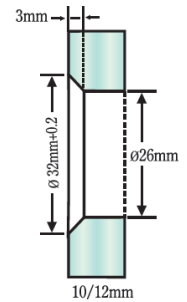
Glass to glass bracket drilling details.



GSD 151F



GSD 151C



G-Tech sliding door system (continued)

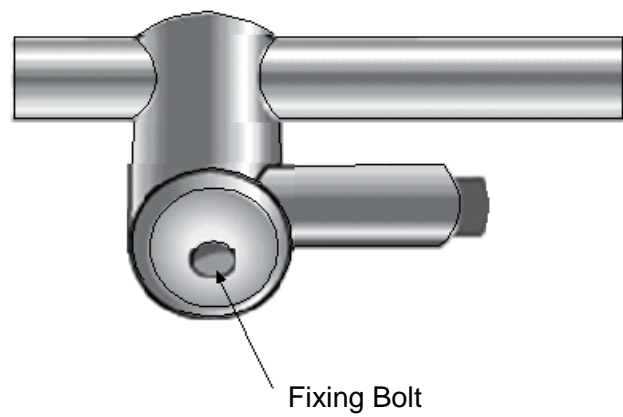
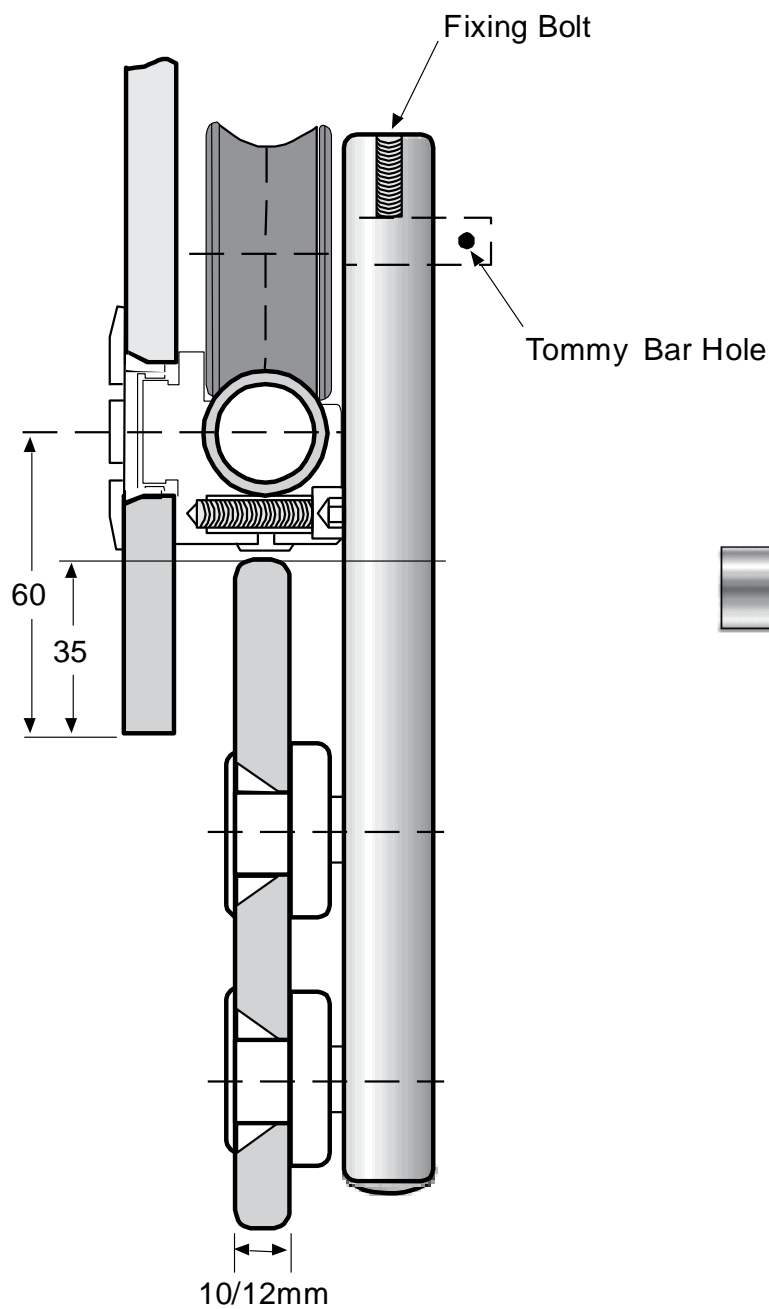
Final adjustments

When hanging the door the final height adjustments (to ensure correct position in the floor guide) can be made by the eccentric shaft in the hanger. Simply loosen the fixing bolt and adjust using the 'tommy bar' hole. Re-tighten fixing bolt. Track end pieces are fitted by simply pushing them into the tube. The stop fixing bolts must be tightened.

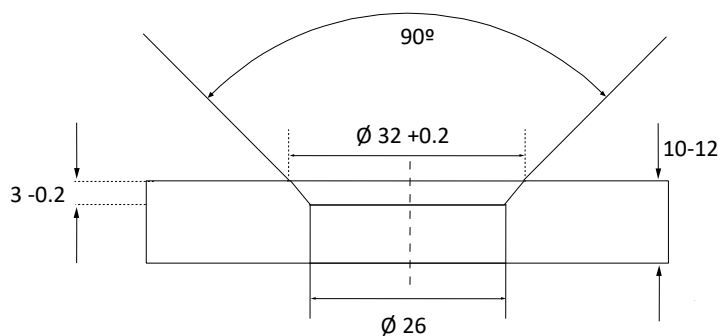
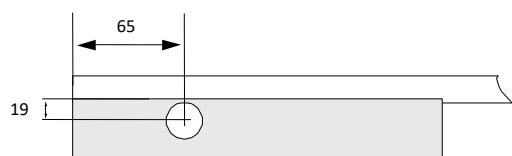
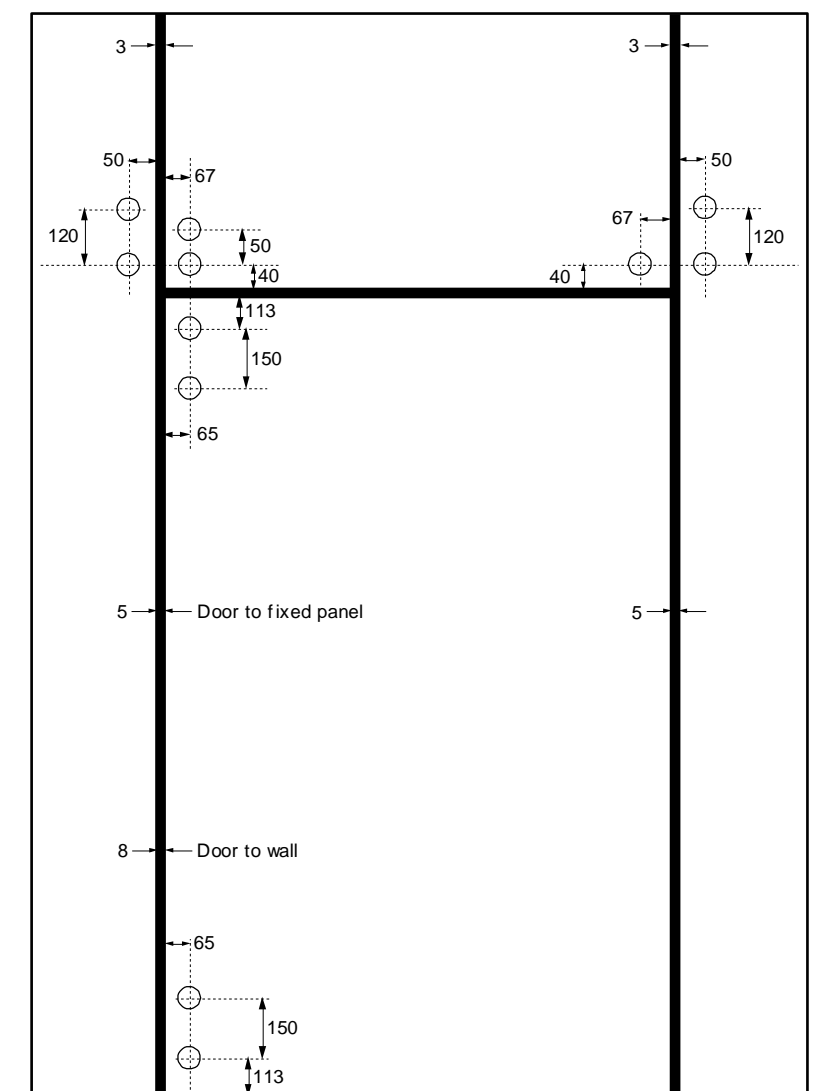
Drawings **Not** to Scale

All measurements are in millimetres

Last updated 21st April 2021



G-Tech pivot - Drilling detail



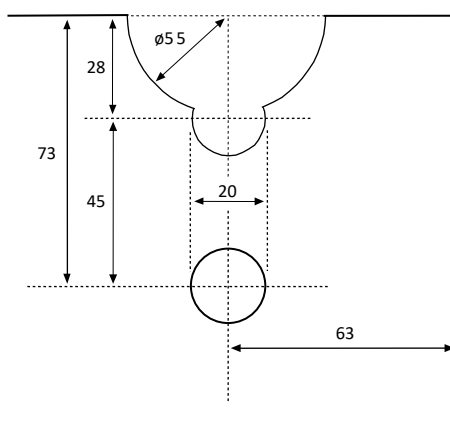
Drawings **Not** to Scale

All measurements are in millimetres

Last updated 21st April 2021

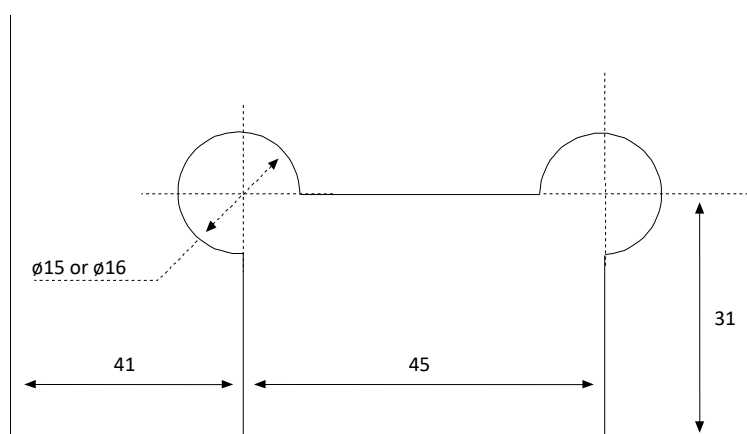
GP10, GP20 Door patch

Notching detail



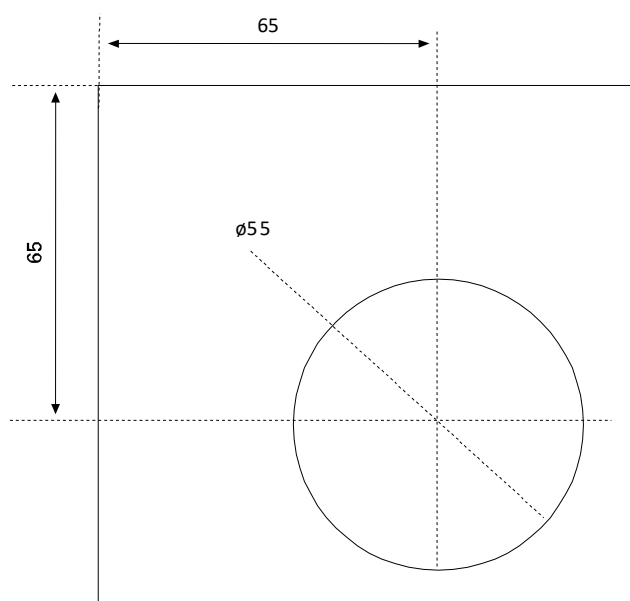
GP30 Door patch

Notching detail



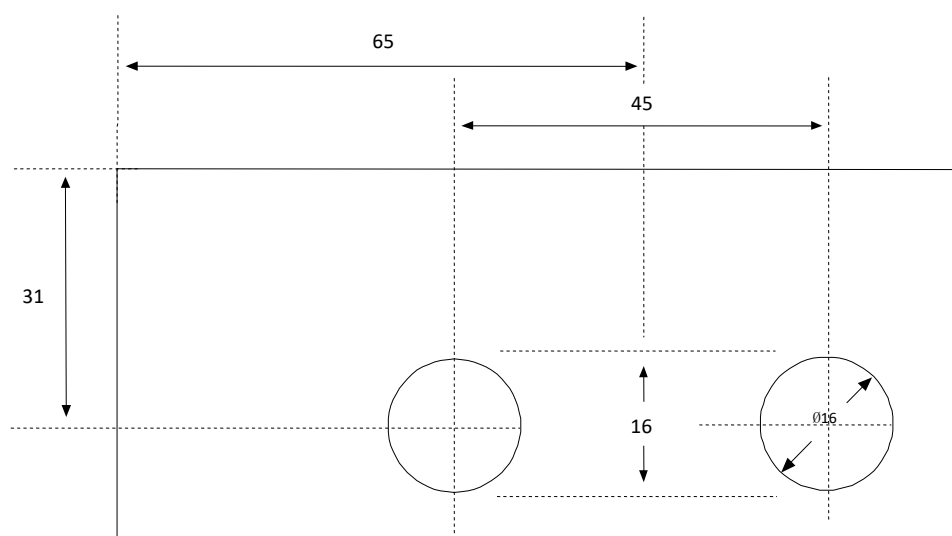
GL34S Patch lock

Notching detail



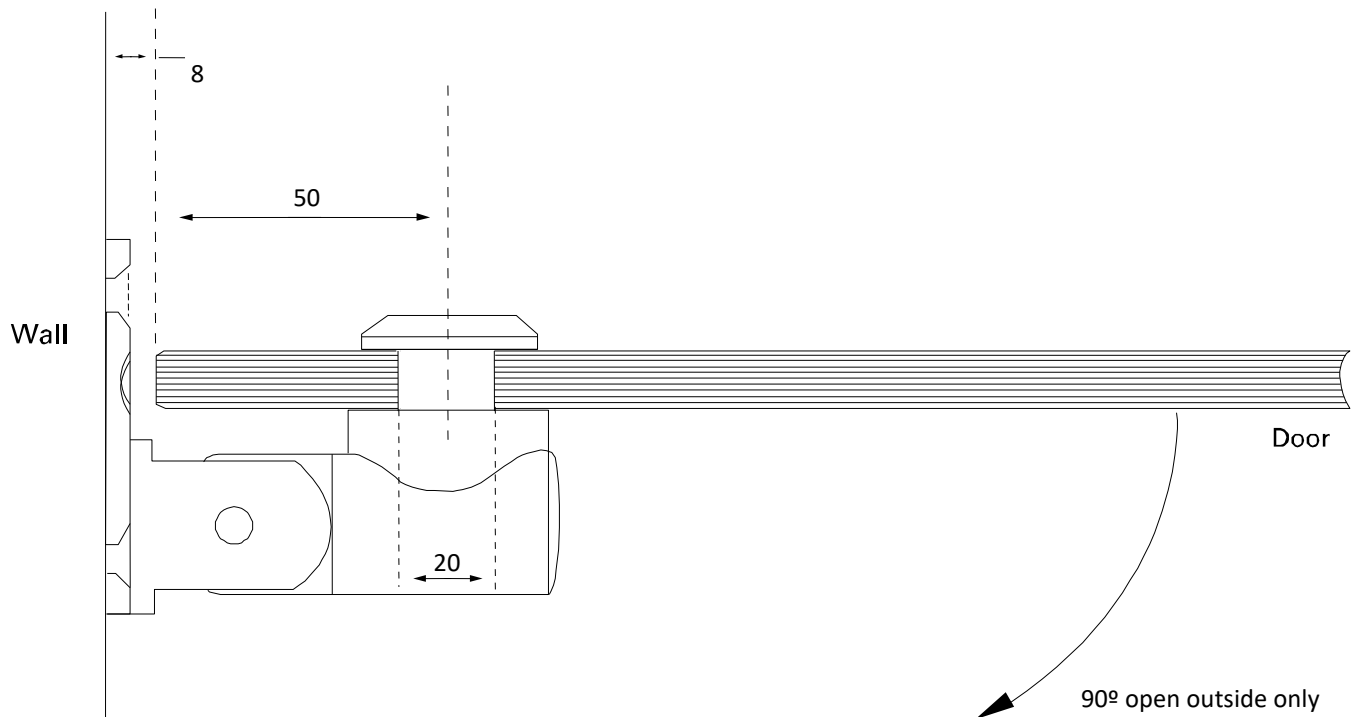
GL34K Patch keep

Notching detail



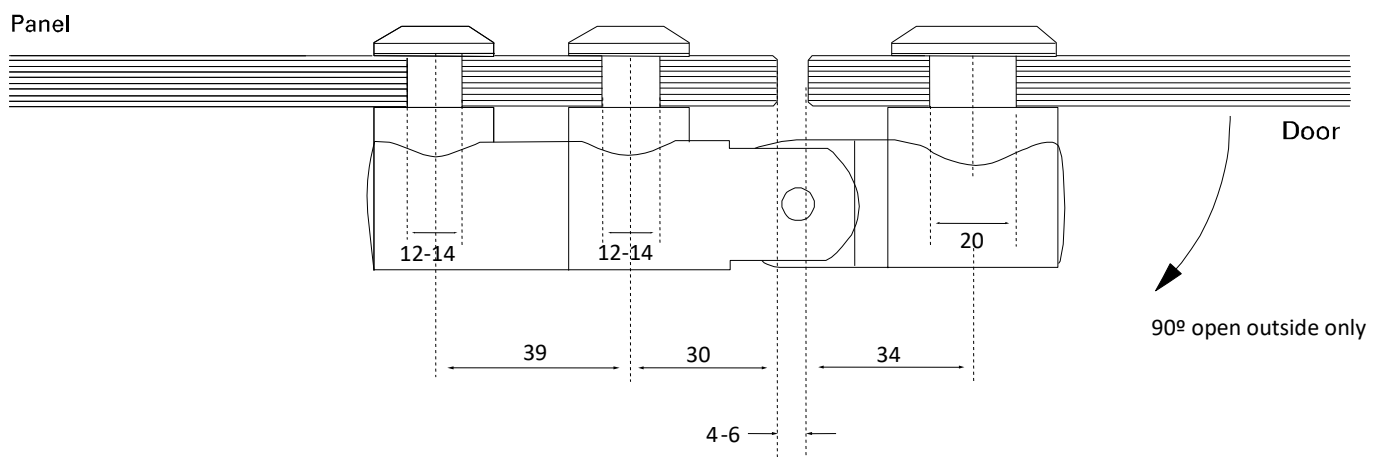
GX512.1

Glass to wall hinge detail



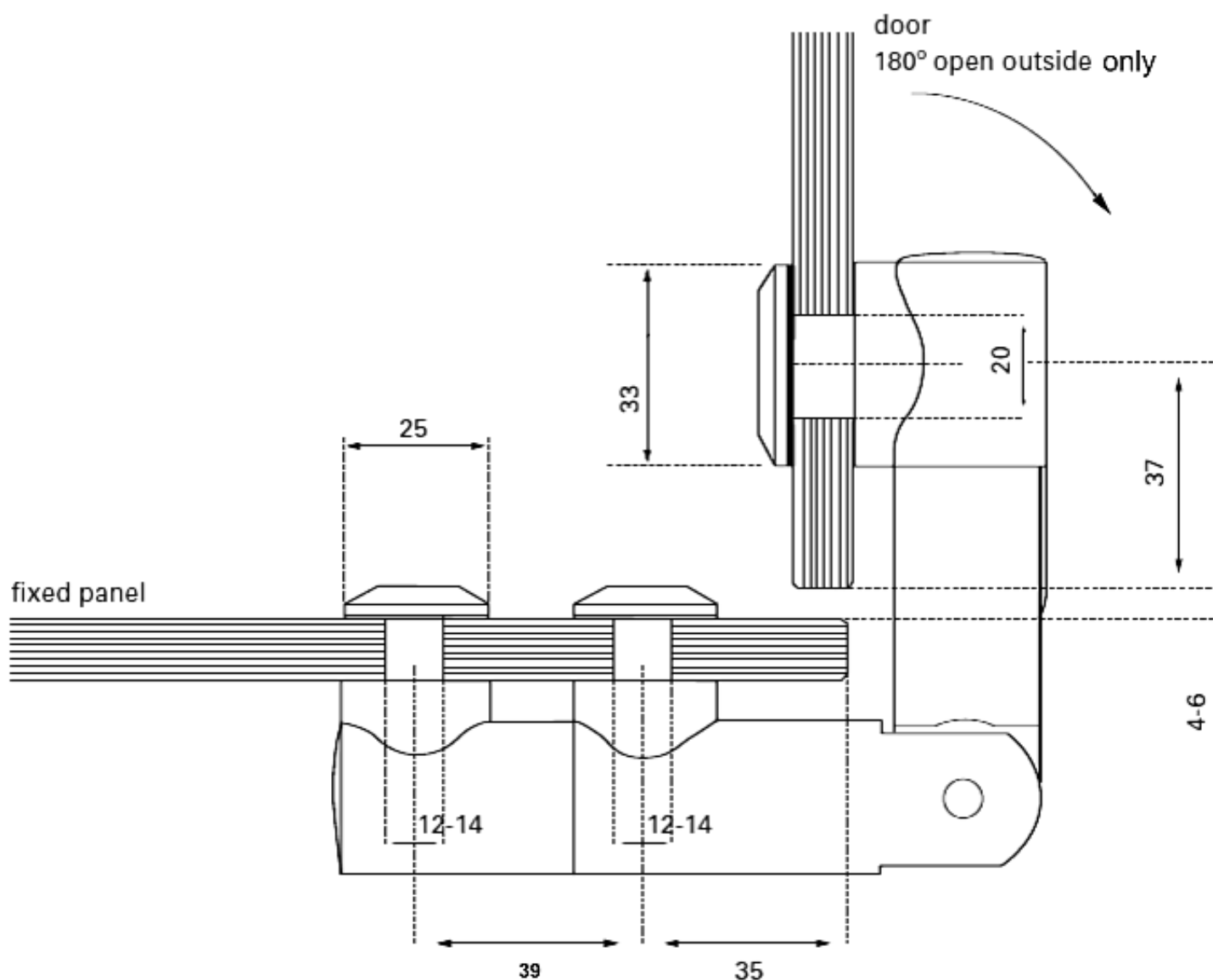
GX512.2

180° Glass to glass hinge detail



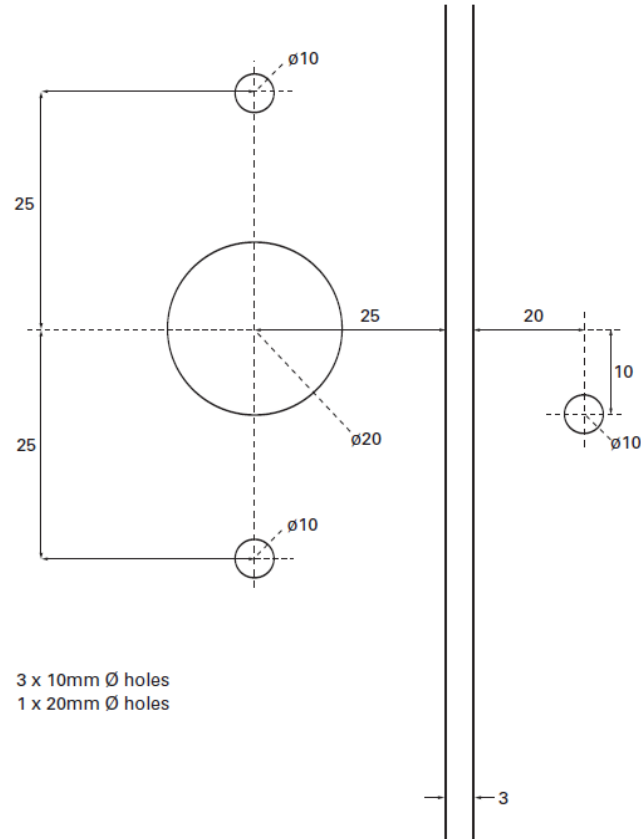
GX512.4

90° Glass to glass hinge



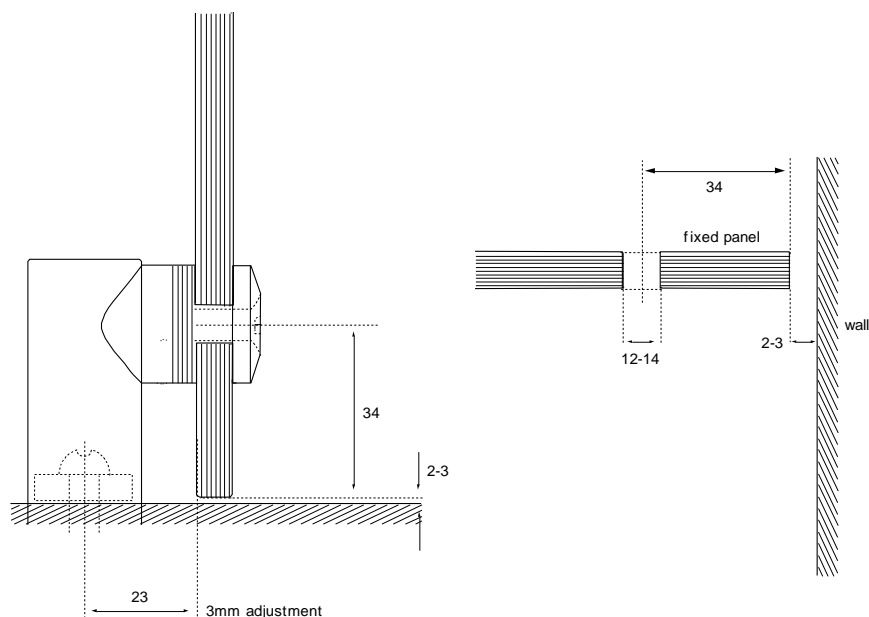
558 Latch

Notching details



GX62.1

Connector to fix glass panel to the wall, floor or ceiling



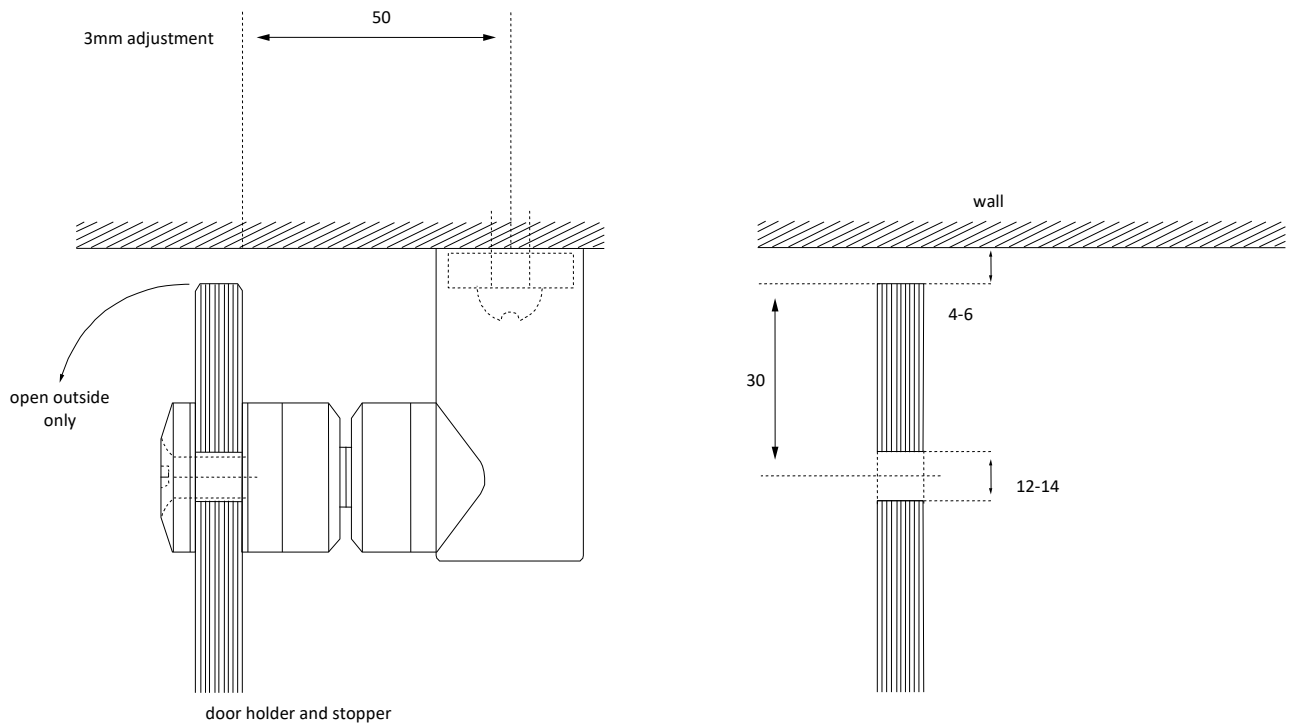
Drawings **Not** to Scale

All measurements are in millimetres

Last updated 21st April 2021

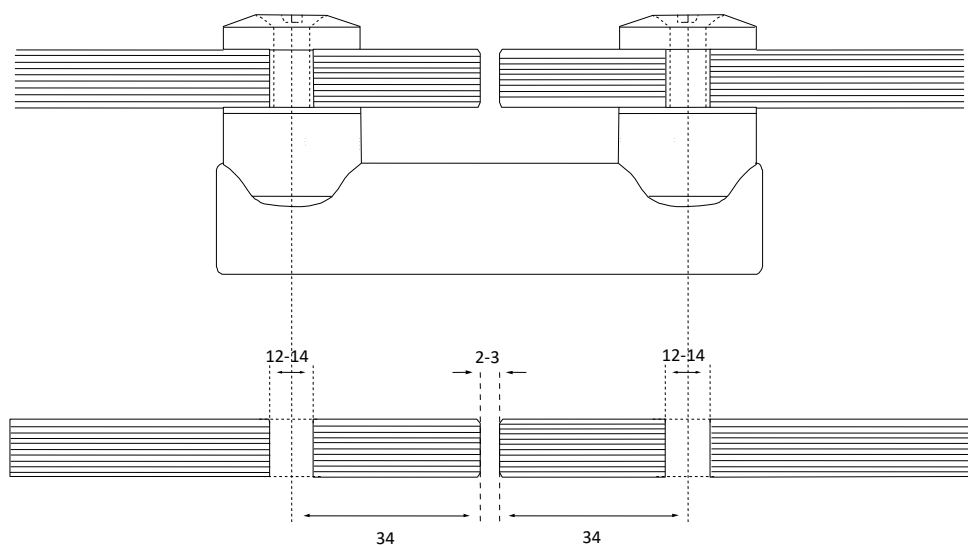
GX62.1 MH

Wall mounted magnetic catch and door stop



GX62.2

180° Glass to glass connector for fixed glass panels



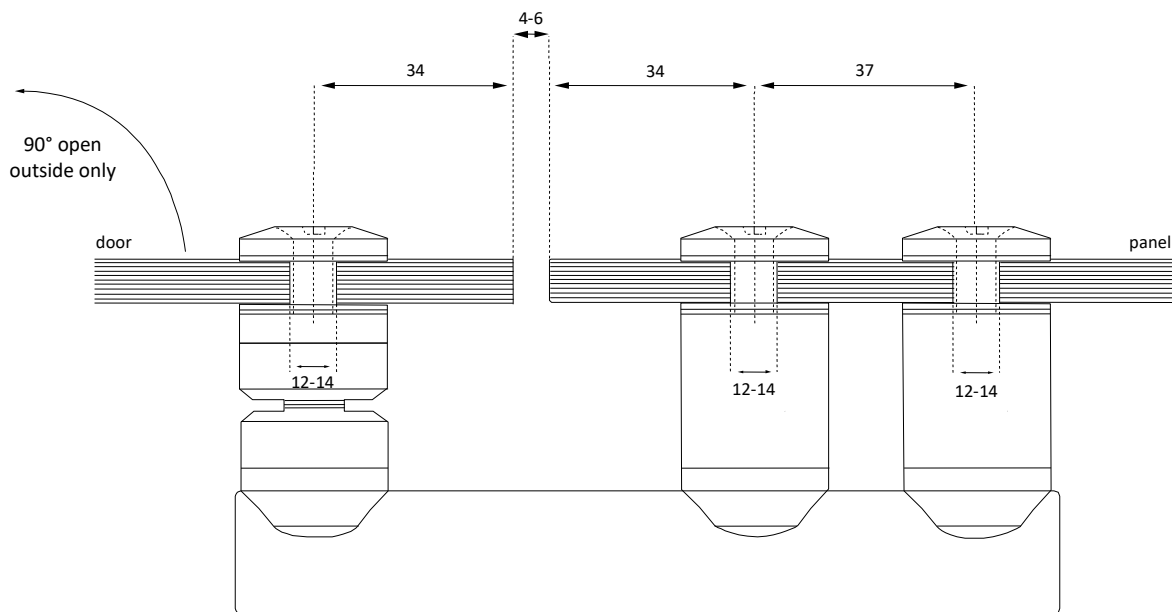
Drawings **Not** to Scale

All measurements are in millimetres

Last updated 21st April 2021

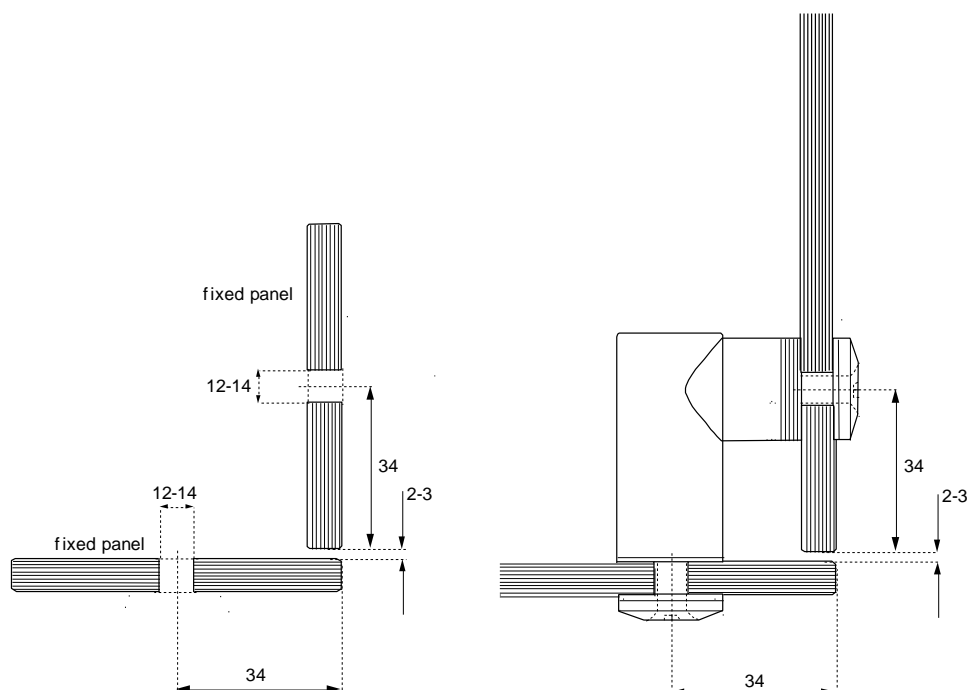
GX62.2 MH

180° Glass to glass magnetic catch and door stop



GX62.4

90° Glass to glass connector for fixed panels



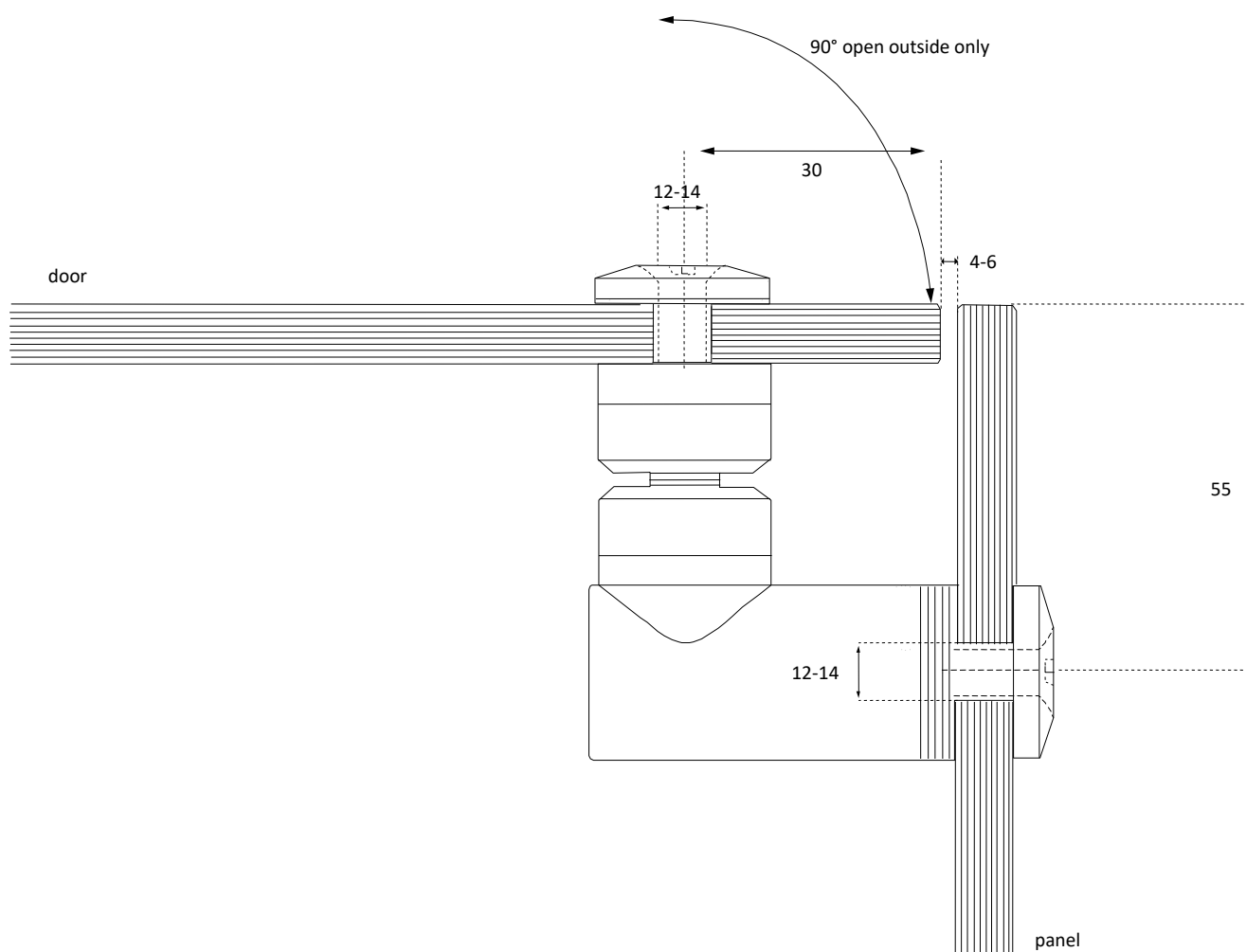
Drawings **Not** to Scale

All measurements are in millimetres

Last updated 21st April 2021

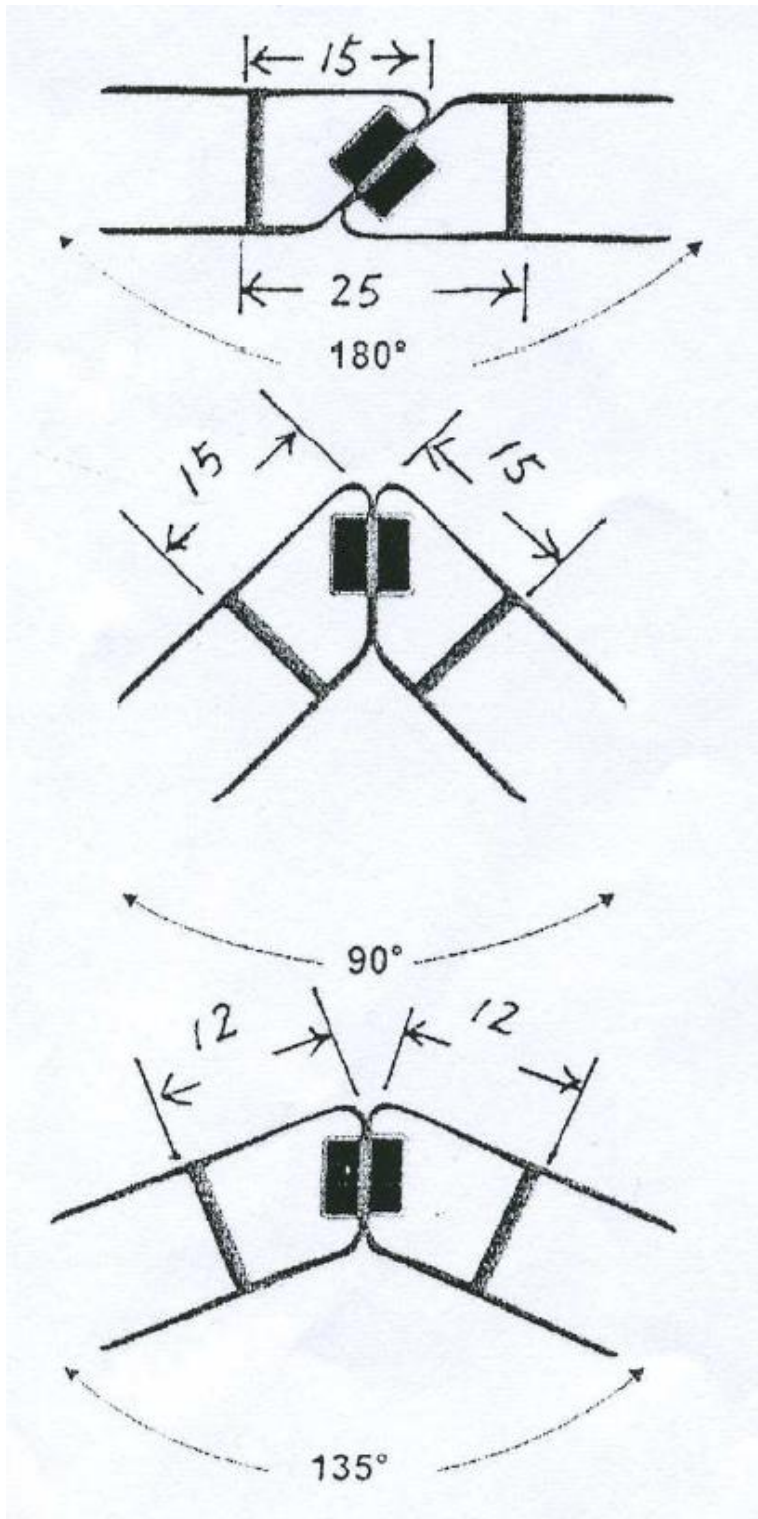
GX62.4 MH

90° Glass to glass magnetic catch and door stop



Magnetic Seals

Clearances

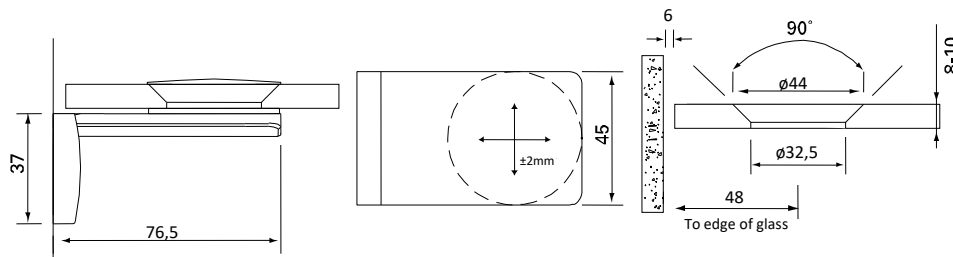


180°

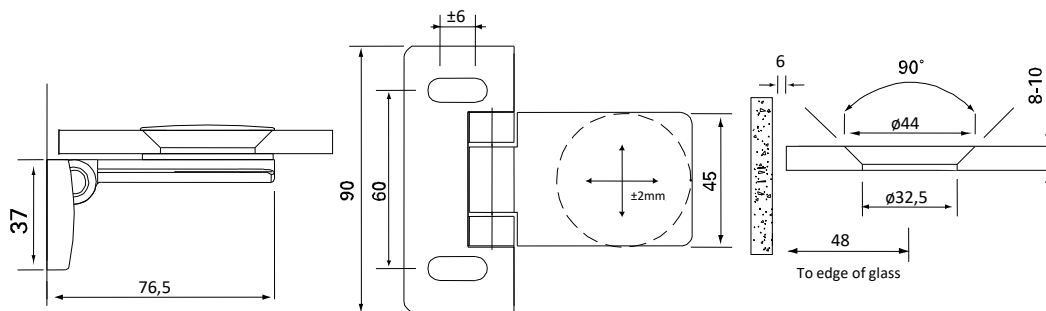
90°

135°

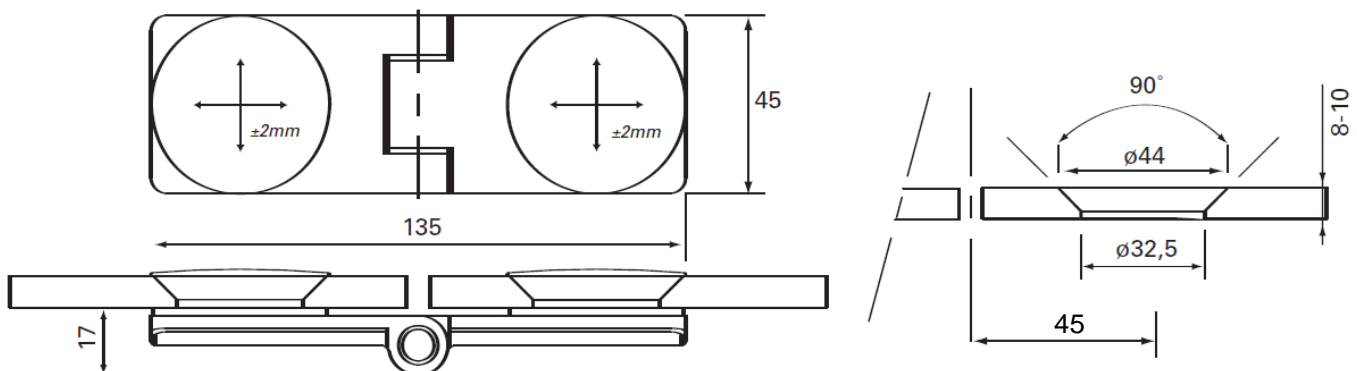
540004 – 90° Glass to Wall Connector



540006 – 90° Glass to wall hinge



540001 – 180° glass to glass hinge



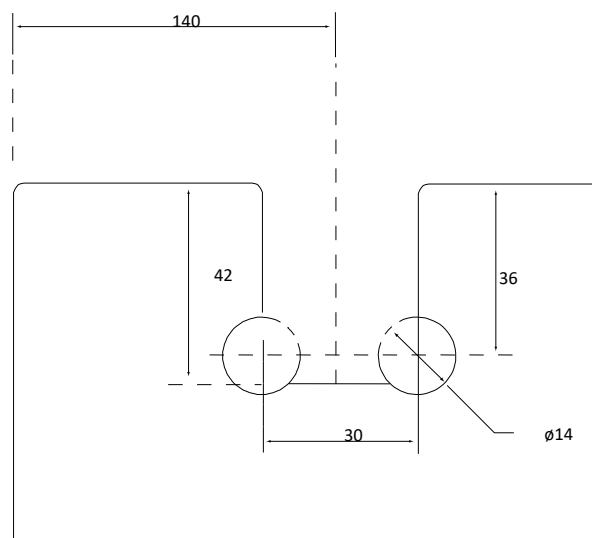
Drawings **Not** to Scale

All measurements are in millimetres

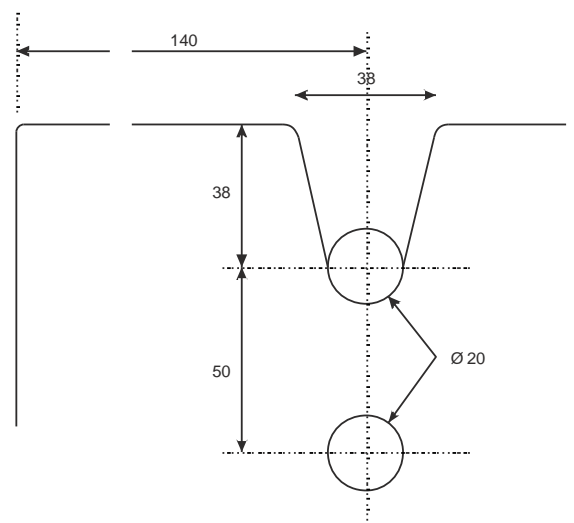
Last updated 21st April 2021

SDT 120 Sliding door system

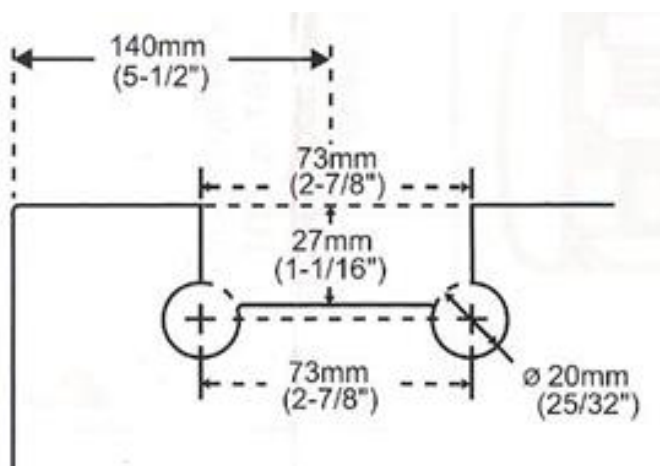
RH65 Roller hanger
10mm Glass Only



RH68 Roller hanger
10–12mm Glass



RH73W Roller hanger
10-12mm Glass



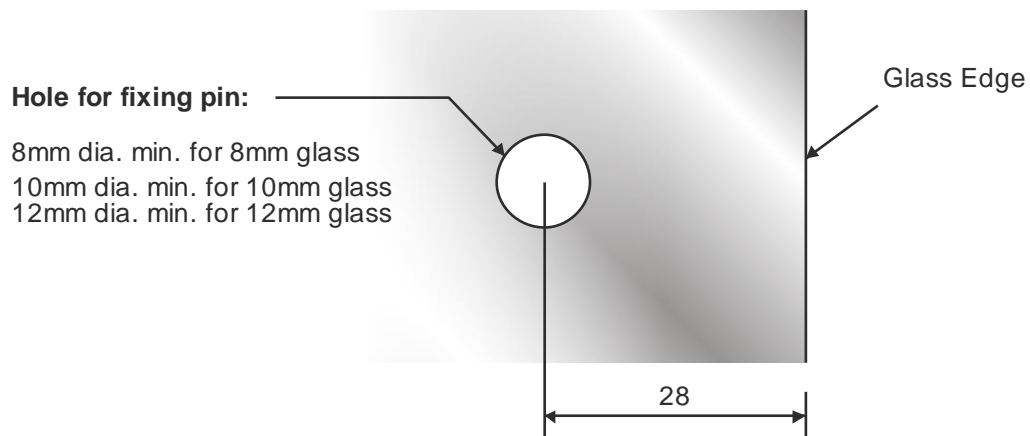
Drawings **Not** to Scale

All measurements are in millimetres

Last updated 21st April 2021

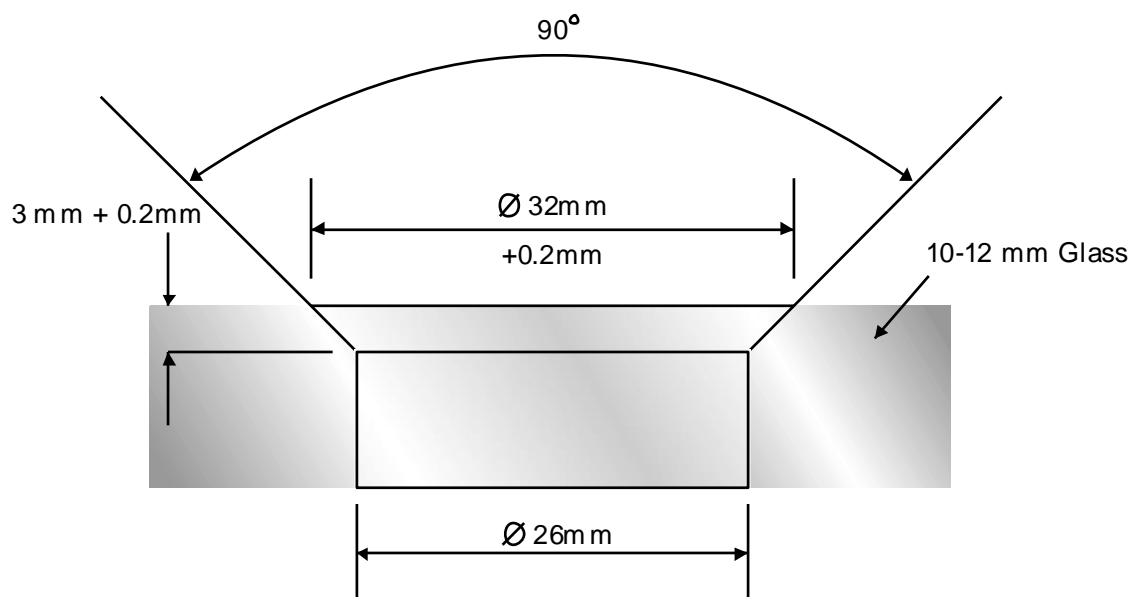
1260 Balustrade clamp with security pin

Drilling detail



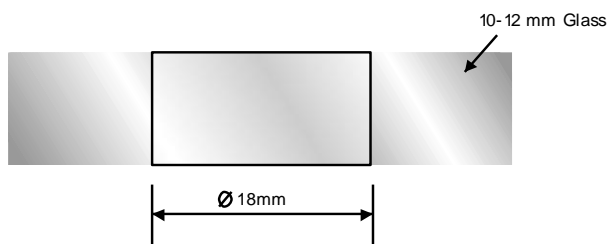
G102C

Drilling detail



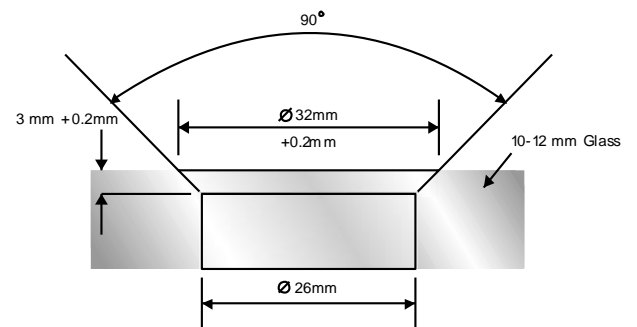
F24

Drilling detail



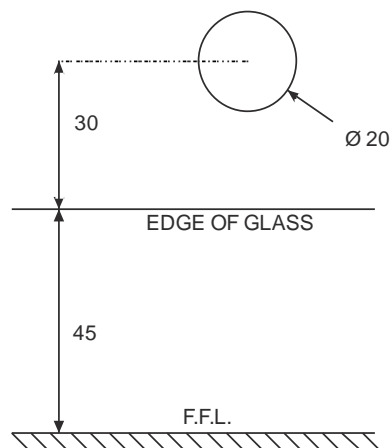
C24

Drilling detail

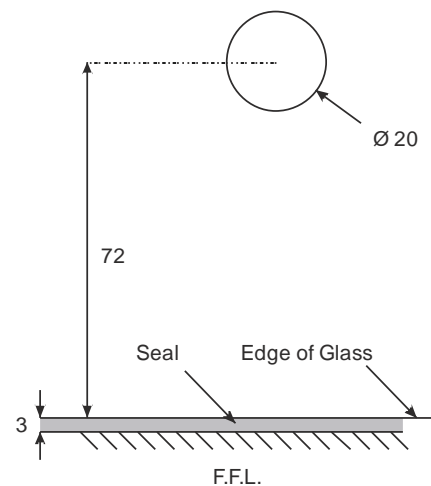


G245F

Cubical drilling option

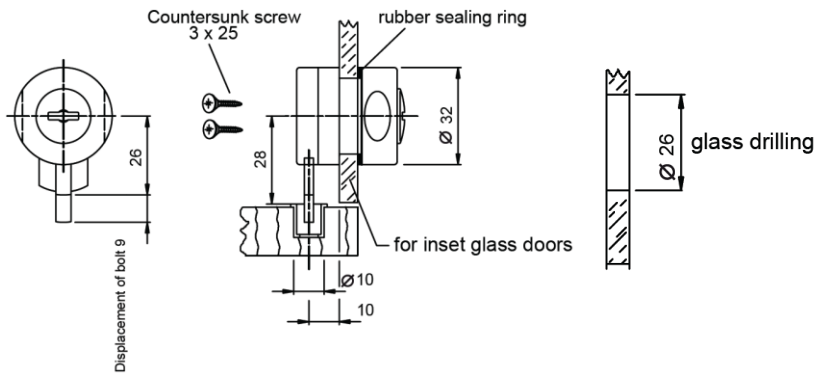


Standard fix option

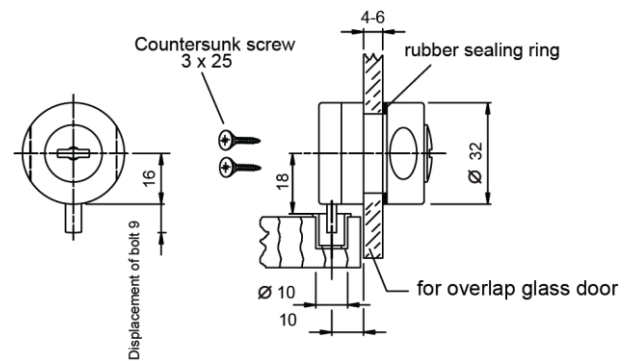


Vitris Glass Locks

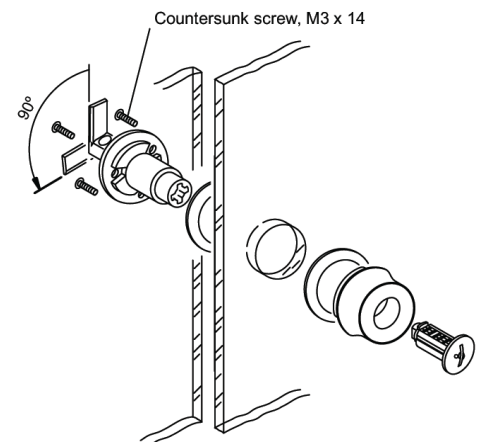
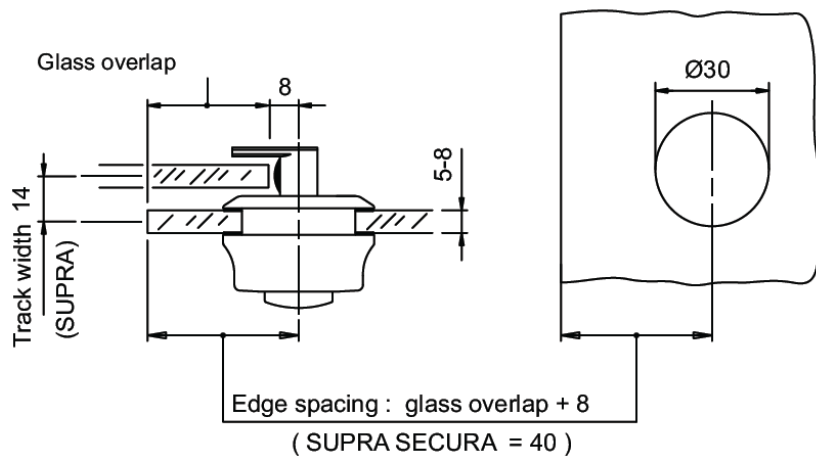
Inset Glass Lock



Overlap Glass Lock

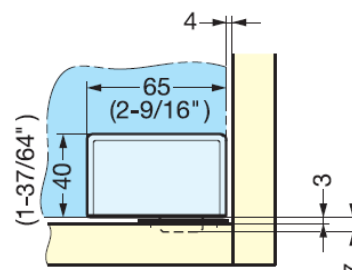
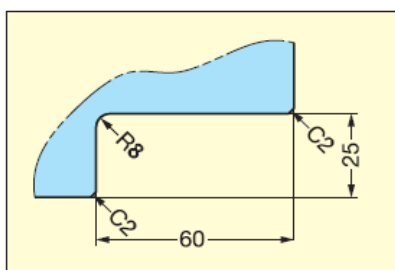


Security Cylinder

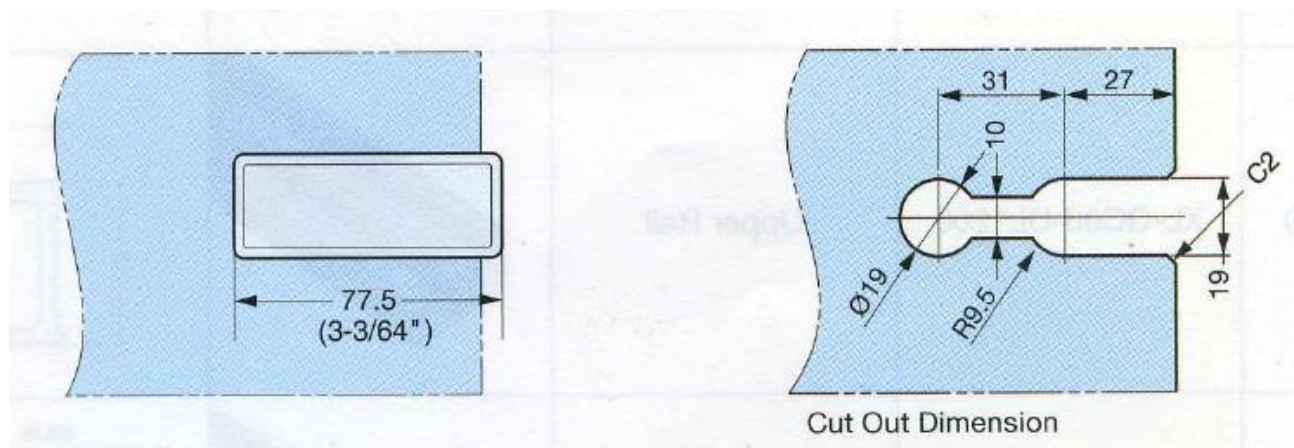


XL-GC Series Cabinet Fittings

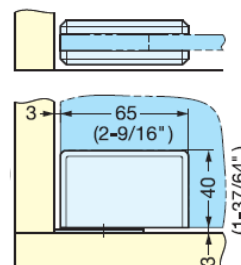
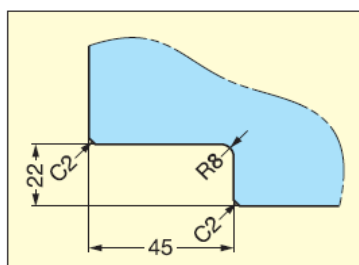
XL-GC02



XL-GC07



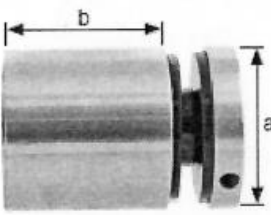
XL-GC04



Adjustable Glass Stand Off

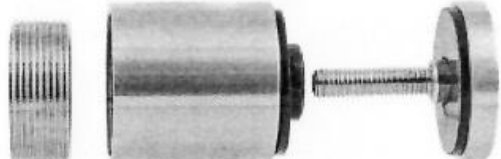
Detail

ADJUSTABLE HOLLOW - FLAT FRONT




a Ø mm	b mm	c mm	Glass mm	Glass Hole Size Ø mm	Code
50	30	10.5	12.76 - 25.52	26	1806460
50	40	10.5	8.00 - 25.52	26	1806461
50	50	10.5	8.00 - 25.52	26	1806462

Fixing bolt not supplied.



Exploded View

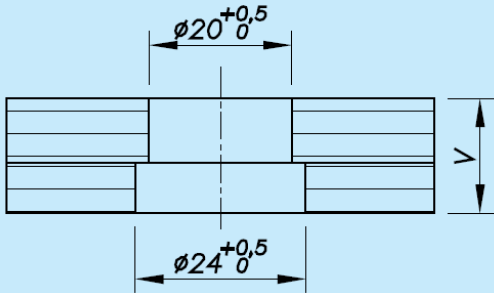
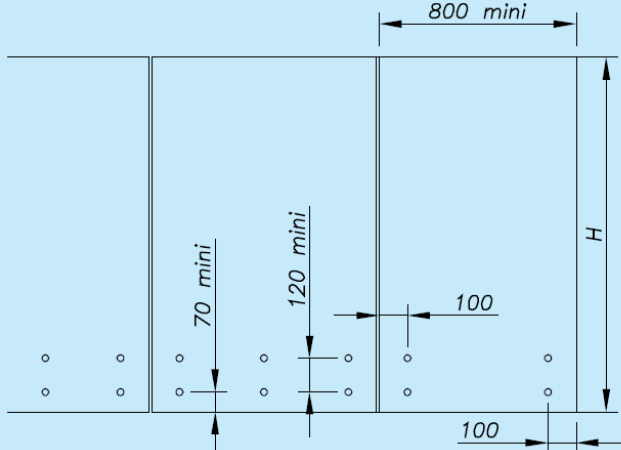


Adjustment Off The Wall

Slotted Countersunk Hole

Sadev Slab Nose

Glass Drilling Detail

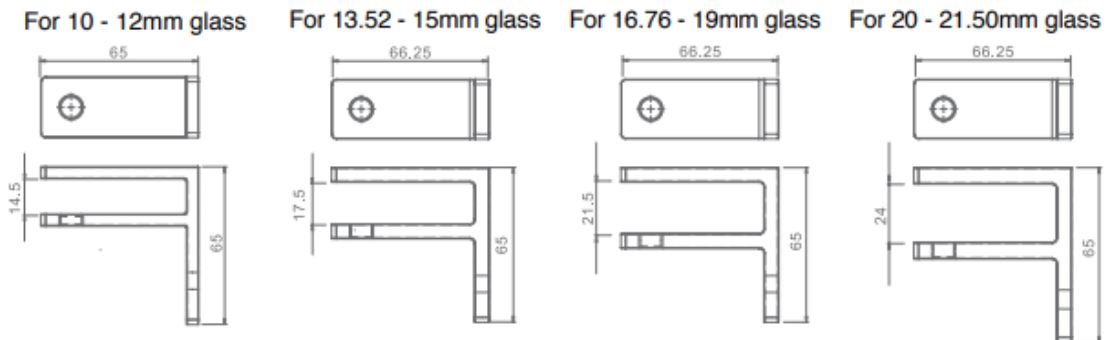


The smallest hole on the wall point fixing side

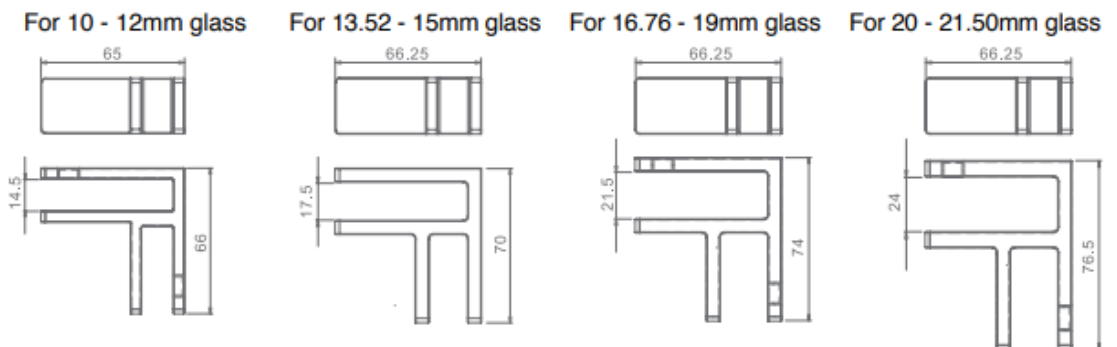
Glass Stiffeners

Detail

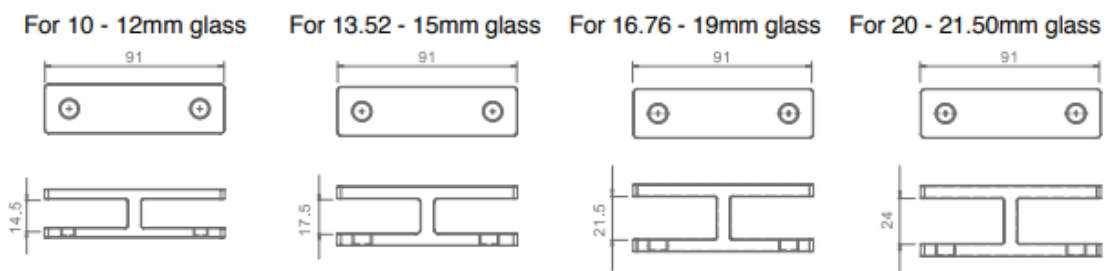
WALL BRACKET



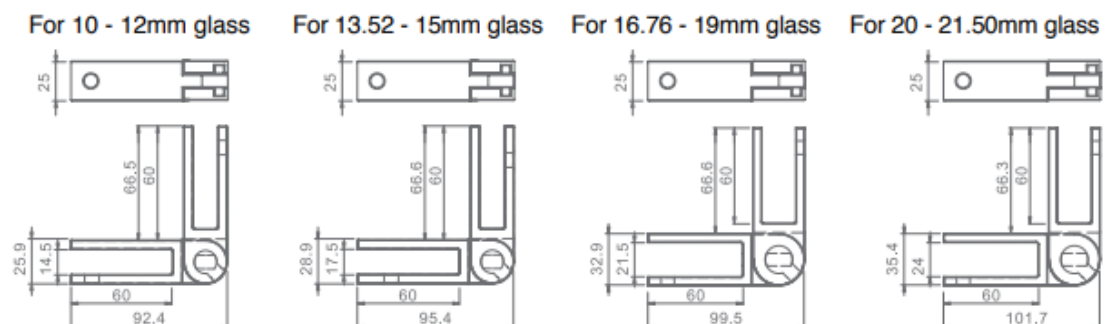
90° BRACKET



180° BRACKET



ADJUSTABLE 90° - 180° BRACKET



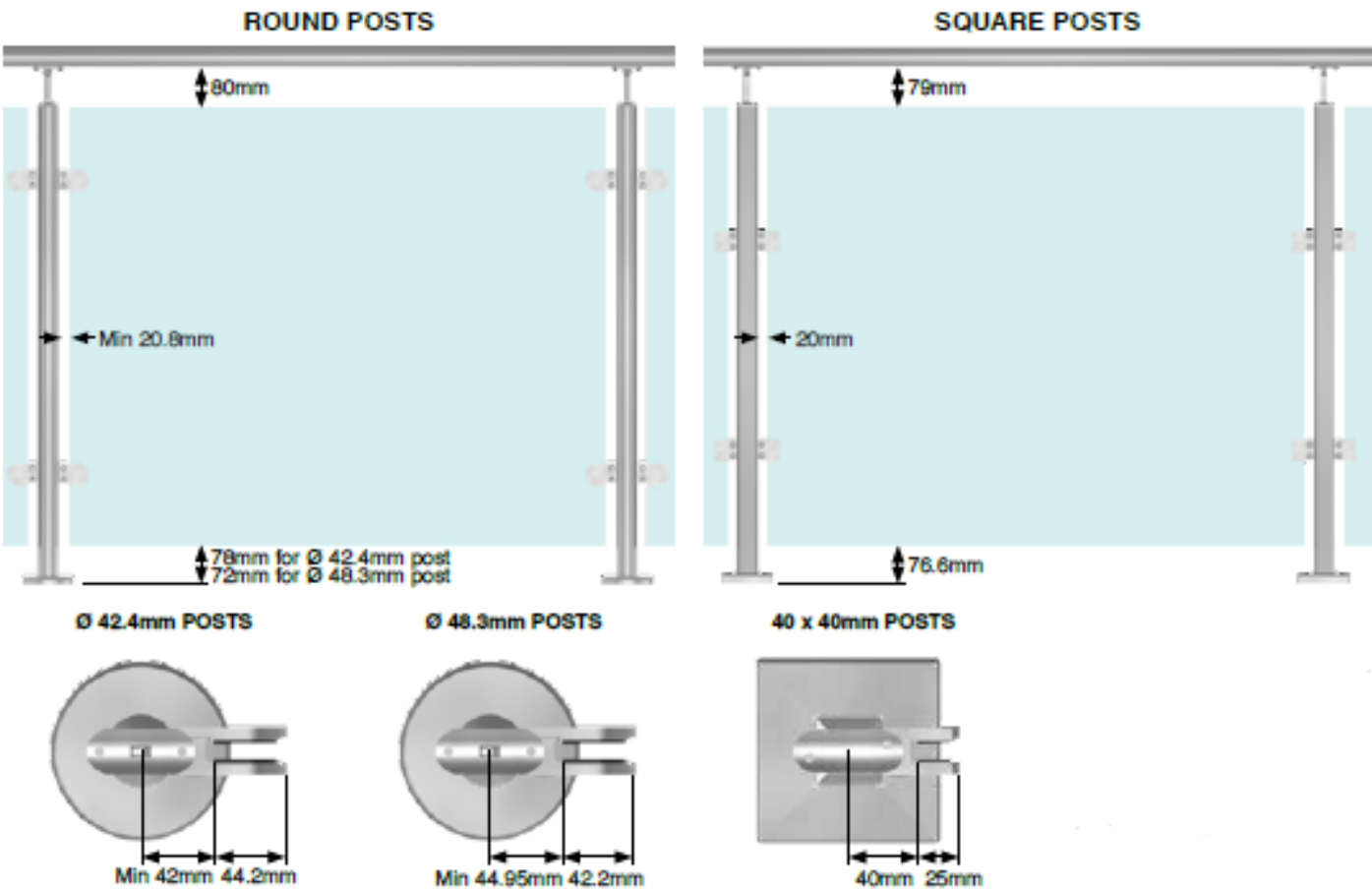
Drawings **Not** to Scale

All measurements are in millimetres

Last updated 21st April 2021

Pre-assembled Posts

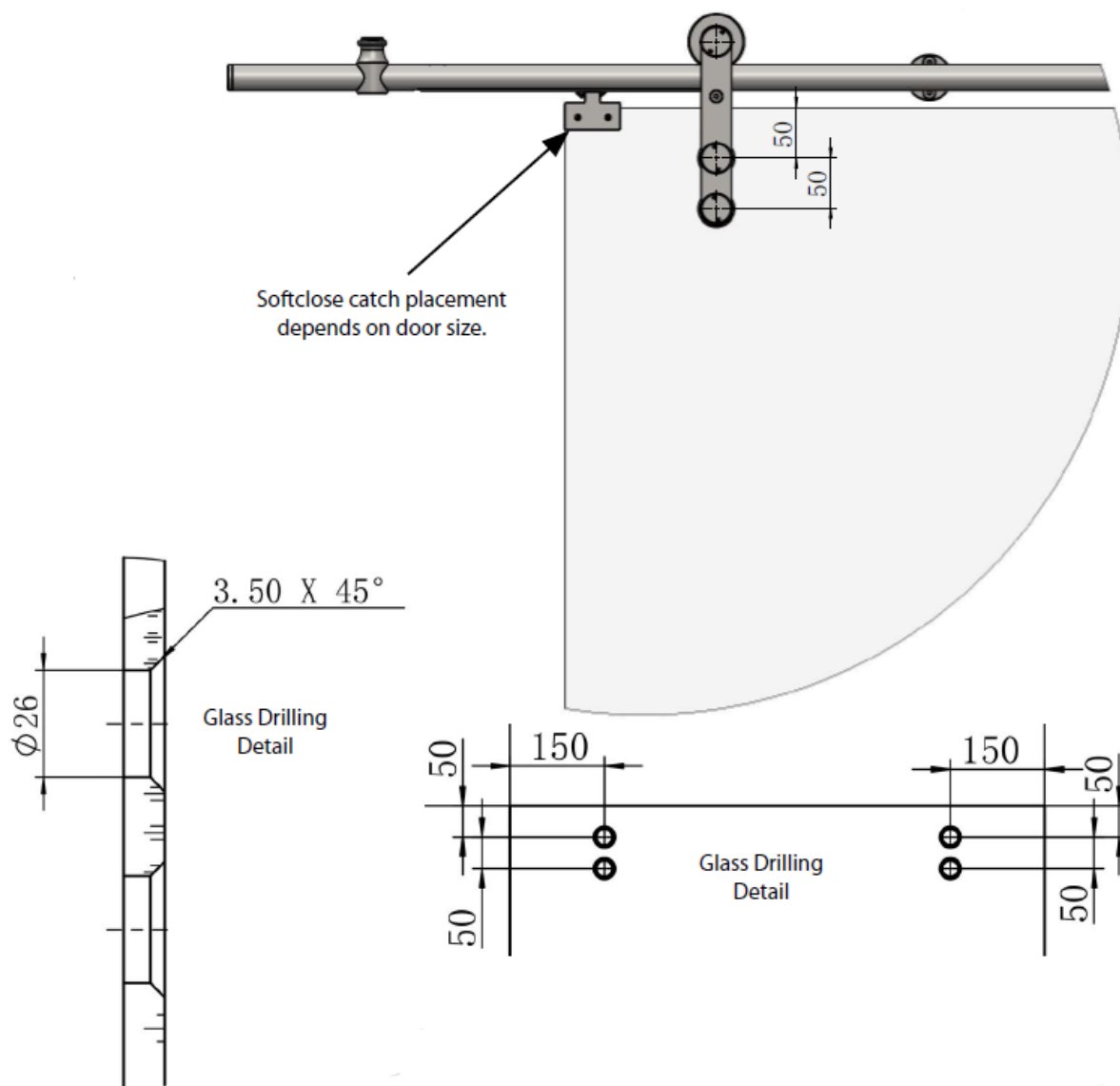
Glass Detail



Thickness mm	Height mm	Width mm	Minimum* Post Centres For		
			Ø 42.4mm Post	Ø 48.3mm Post	□ 40mm Post
10	900	1100	1184	1190	1180
10	900	1000	1084	1090	1080
10	900	900	984	990	980
10	900	800	884	890	880
10	900	700	784	790	780
10	900	600	684	690	680
10	900	500	584	590	580
10	900	400	484	490	480
10	900	300	384	390	380
10	900	200	284	290	280
10	900	100	184	190	180

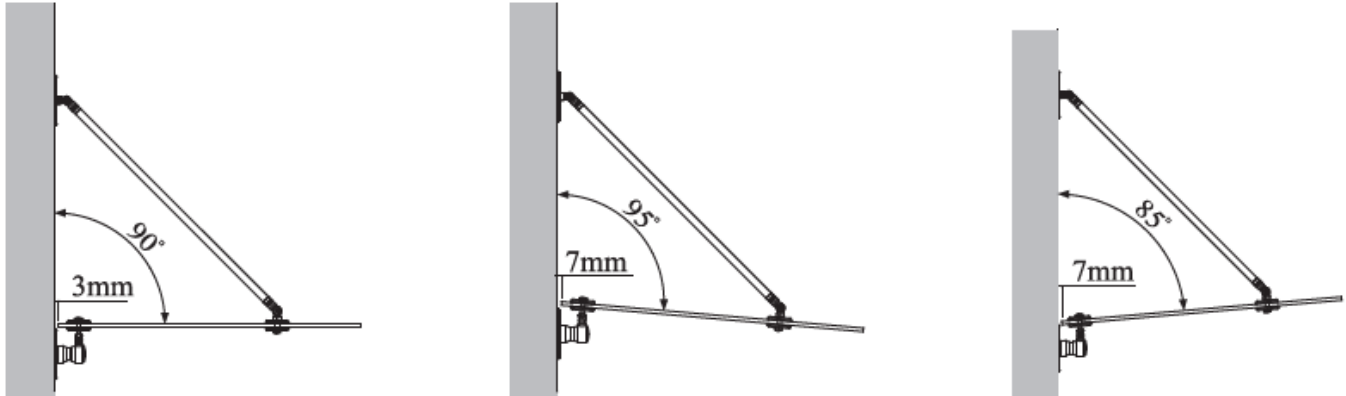
*Minimum only applies to round posts, square posts are fixed centres.

BarrierSlide Crystal Glass Drilling Detail



Glass Canopy Hardware

Glass Drilling Detail



The slope of the Glass Canopy can be adjusted $\pm 5^\circ$ by revolving the connecting rod.

Make-up of laminated glass panel;

6+6mm or 8+8mm tempered glass with 1.5mm interlayer.

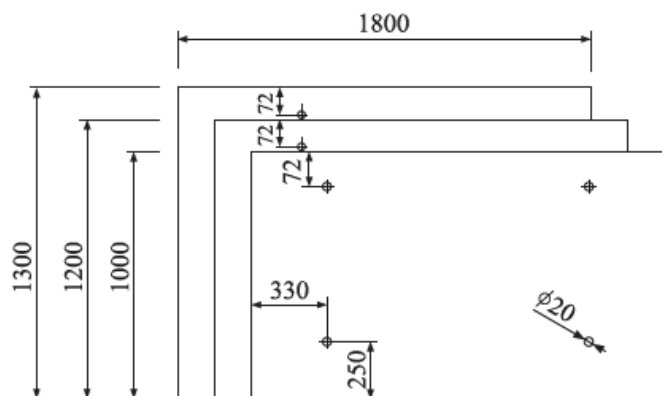
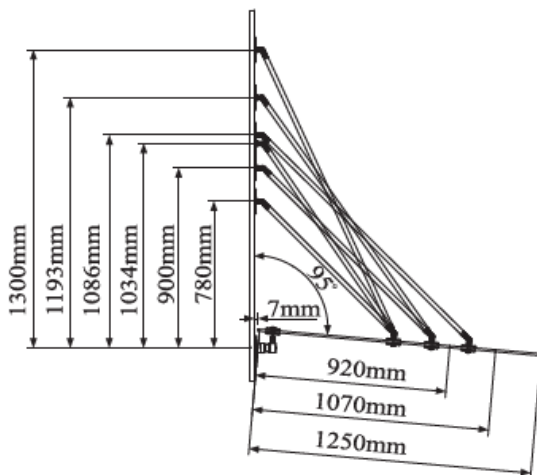
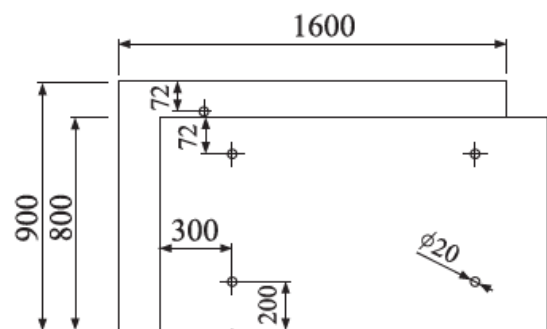
All glass edges should be polished.

Use connecting rod lengths (Adjustable by 50mm)

Art. F10-1920-1

Art. F10-1920-2

Art. F10-1920-3

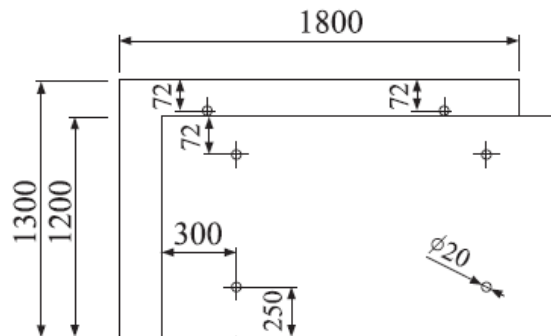
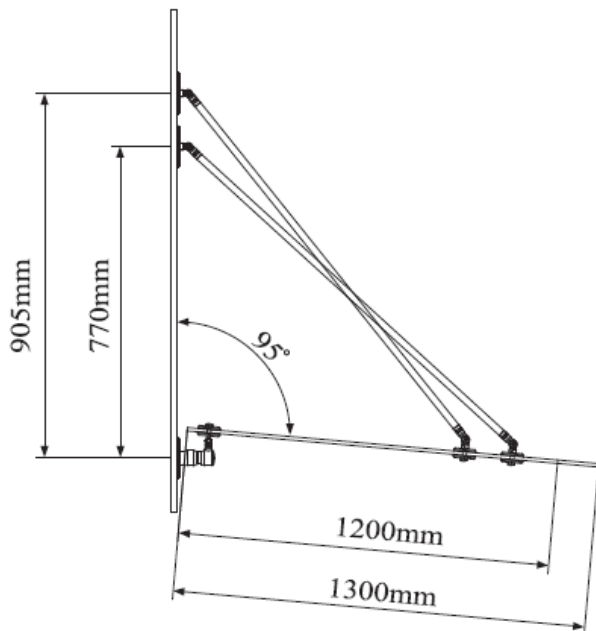


Drawings **Not** to Scale

All measurements are in millimetres

Last updated 21st April 2021

Glass Canopy Hardware cont...

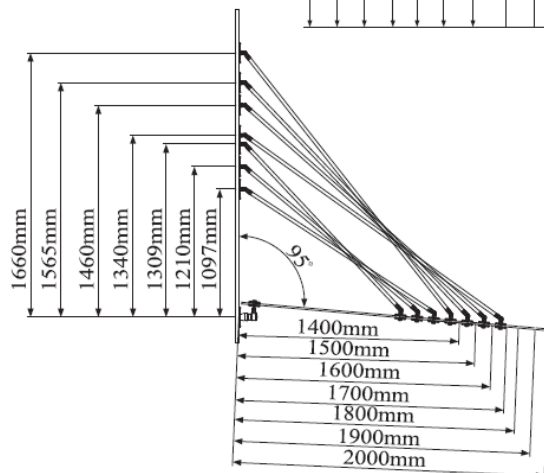
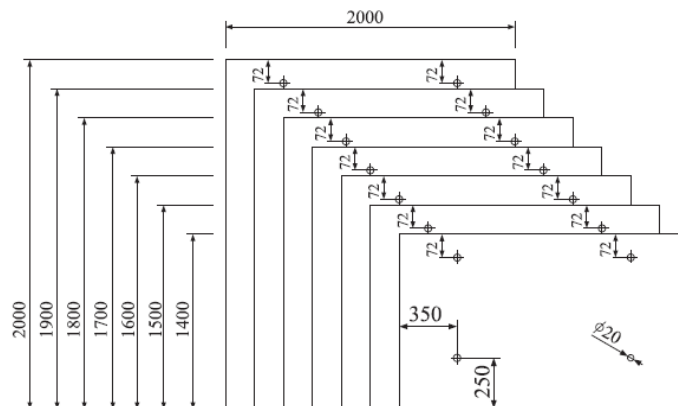


Make-up of laminated glass panel;

10+10mm tempered glass with
1.5mm interlayer.

Use connecting rod;

Art.F10-1920-3



Make-up of laminated glass panel;

10+10mm tempered glass with
1.5mm interlayer

Use connecting rod;

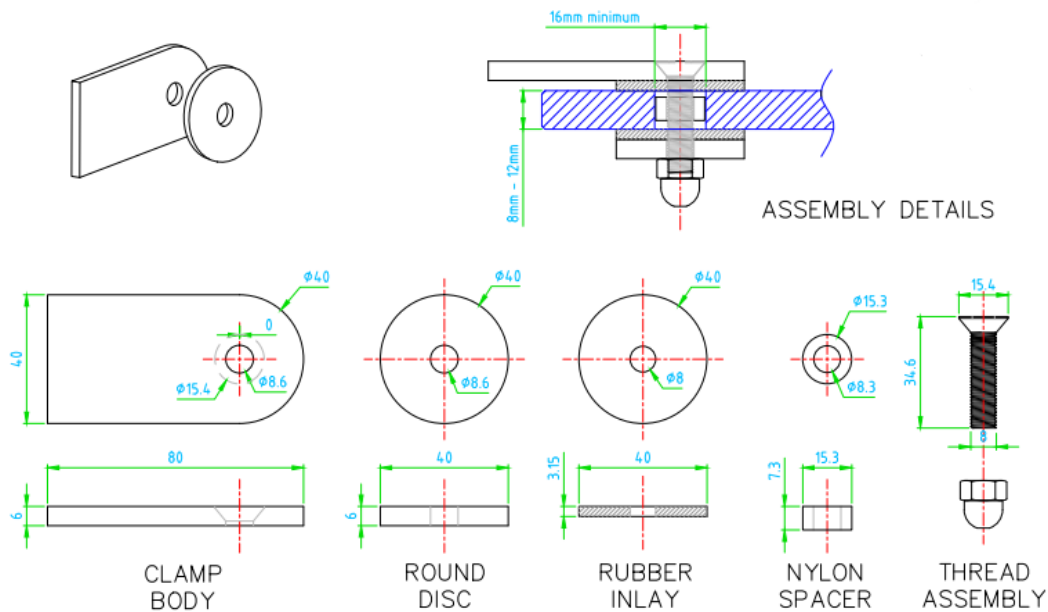
Art. F10-1920-4

Art. F10-1920-5

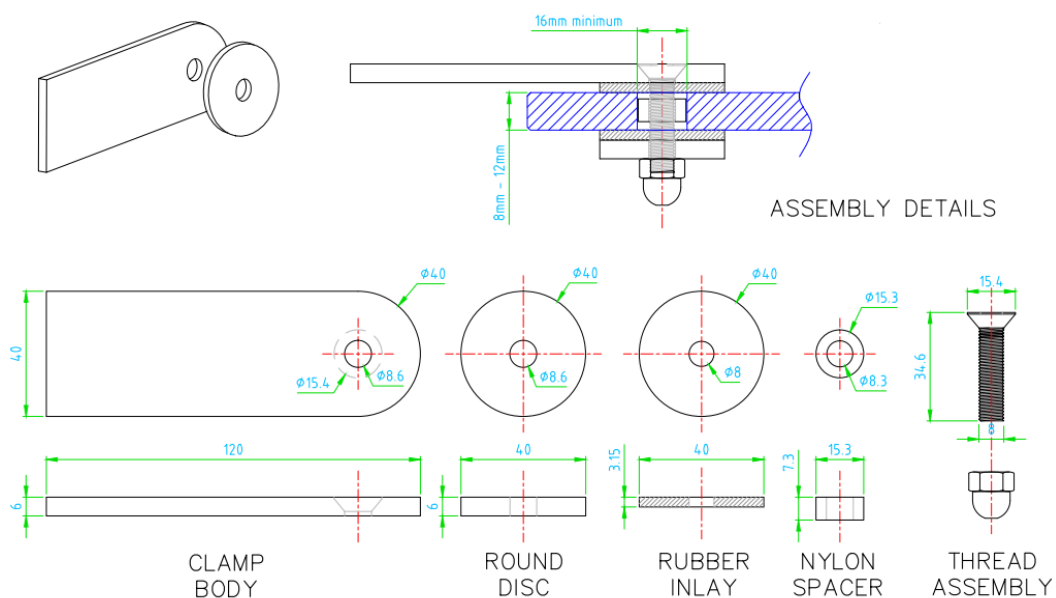
Weldable Glass Clamps

Glass Drilling Detail

Short Single



Long Single



Drawings **Not** to Scale

All measurements are in millimetres

Last updated 21st April 2021

Weldable Glass Clamps cont...

Straight Double

