



EN Approved Product Overview



Introduction

With important assets and people to protect, a reliable and responsive solution is required, to react rapidly to any situation. Keeping a site safe is not the only priority but also with the risk of physical damage and financial loss resulting from a fire, there is also the risk to operational performance and reputation.

Early warning fire systems and detection technology can detect a fire and in the case of extinguishant detection, it can also automatically release a fire suppression agent to eliminate fire within seconds. Stopping a fire within the first few moments can reduce or avoid damage to equipment and assets, and subsequent loss of operational productivity.

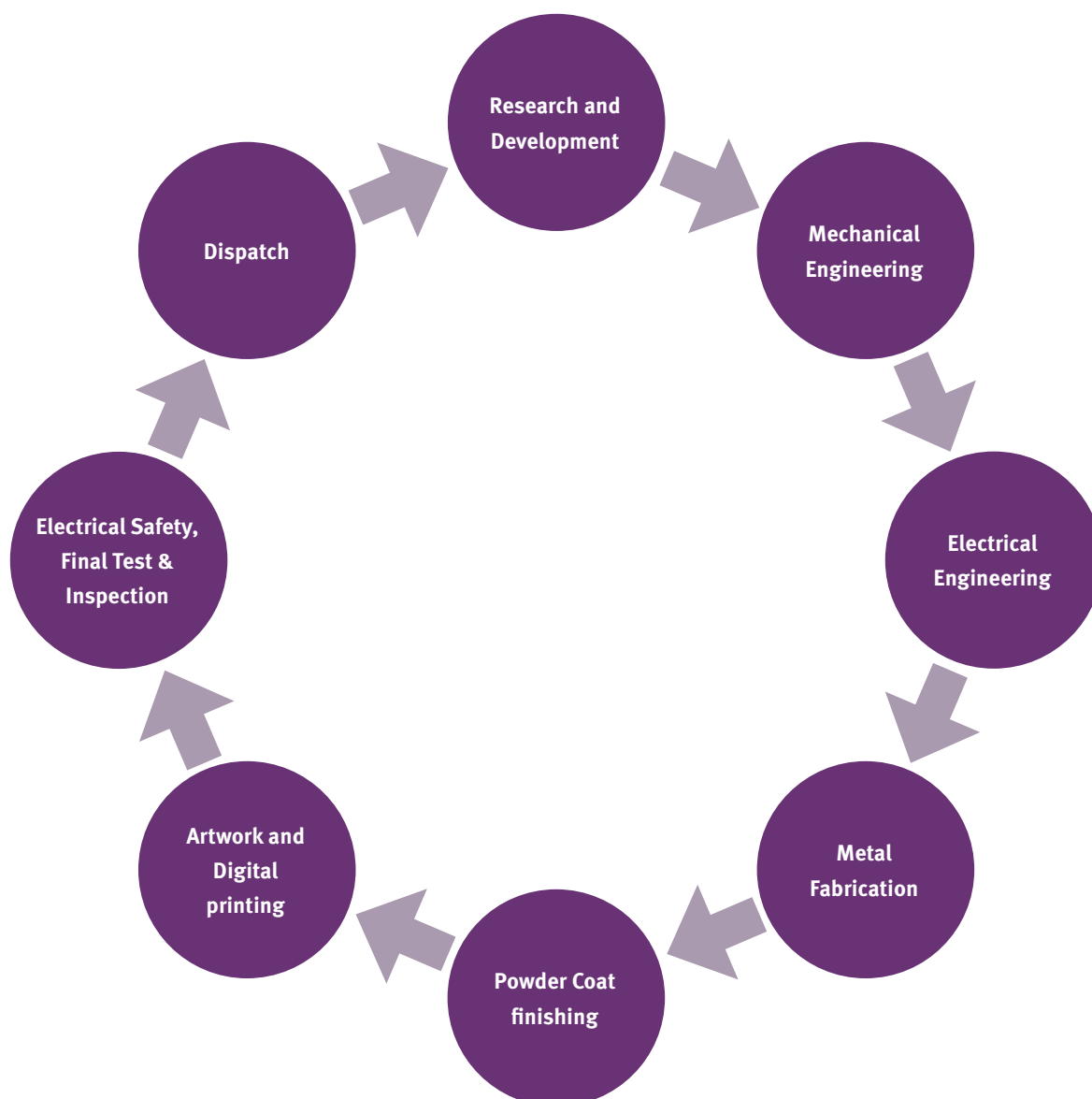
Manufacturing

For Kentec, being at the cutting edge of technology is all about creating a safe environment. This means developing solutions that provides protection to people and property for when they need it.

Our R&D teams based in the UK and USA, work together using pioneering equipment and facilities to develop innovative designs, technologies and processes. By utilising international expertise, our unique resource along with the creation of an environment to foster collaboration, cohesion and cross-fertilisation of knowledge enables a greater solutions-led approach to technology and thinking.

Our manufacturing capabilities and end to end process enables full control, accountability and traceability of our products made in the UK. Our products and manufacturing facility provide the highest quality, assured and audited by world leading certification bodies BRE, BSI, UL and FM.

Over 52,000sq ft accommodates our design to completed end product manufacturing facility, bespoke engineered solutions department, goods-in, stores, QA, and goods-out.



Taktis[®] Fire – Analogue Addressable Control Equipment

Taktis[®] is Kentec's most powerful and sophisticated analogue addressable fire panel. Intelligent and technically robust, it has enhanced integration and networking capabilities to meet the current and future needs of small to larger buildings and installations.

Initially configured as a fire detection and alarm system, the flexibility of Taktis is such that it can be re-configured to realise many other control and indication applications, with direct integration into intelligent buildings.

Available in four and eight slot variants, Taktis fire control panel ranges from two to 16 detection loops. Taktis can network up to 128 panels, making it ideal for the largest sites such as schools, hospitals, multi-site retail/supermarkets, critical infrastructure and major commercial and industrial facilities.

The modular nature of Taktis allows all field wiring to be connected to a passive mother board enabling addition, re-configuration or replacement of all electronic hardware without the need to disconnect any field wiring. This modularity also allows each panel to be customised with addressable loop detection circuits, conventional detection circuits, relay cards, additional sounder outputs or programmable I/O modules as required.

As a truly open protocol panel it offers installers and their customers maximum flexibility in systems' design, site-customisation and in the third-party devices that they use. Not only does Taktis provide solutions to the most technically challenging applications in life safety, it will also deliver added value, market advantage and a competitive edge to your business.

Features

- Two to eight loop or two to 16 loop versions
- Multiple protocols supported on a single panel (in banks of two loops)
- Network up to 128 panels
- 500mA loop current
- Four programmable sounder circuits each rated at 2.5A
- 5.25A or 10.25A power supply options
- Enclosure options to suit 26Ah or 45Ah battery options
- Three programmable inputs
- Five programmable relay outputs
- Up to 512 programme Input/Output via optional plug in and serially connected expansion cards
- Hard wired fire and fault routing inputs and outputs
- Over 4000 sub address points per panel
- Option to 'invert' inputs and outputs
- Configurable via a USB flash drive or alternatively a PC USB serial connection
- Optional Media Gateway communications card
- Compatible with Ockular management solution
- Approved and compliant with EN54-2, EN54-4. EN54-part 13 pending approval



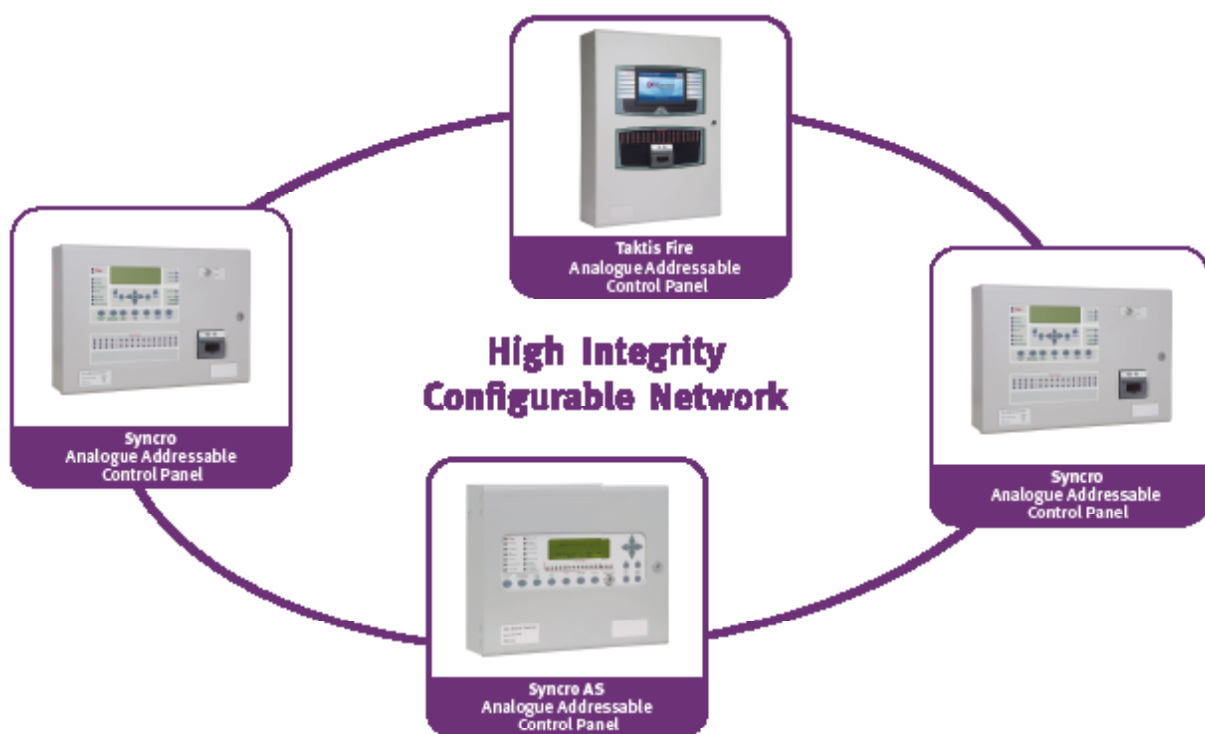
Taktis/Syncro Bridge Functionality For Phased Upgrades

Kentec has a unique solution for migrating Syncro panel networks to the latest Taktis technology protecting the end user's long-term investment.

With the Syncro/Taktis bridge functionality customers can upgrade their existing networks from legacy Syncro fire panels to the new highly-sophisticated and scalable Taktis control panel. Upgrades can be carried out on a panel-by-panel basis, with reduced capital expenditure and minimising essential system downtime.

The bridge functionality enables customers to replace a Syncro panel with Taktis within a Syncro network. On a mixed network Taktis panels will function as a Syncro, but once the network is replaced, the full functionality of the feature-rich Taktis will become available. This also enables customers to expand their network in line with Taktis' scalable capabilities.

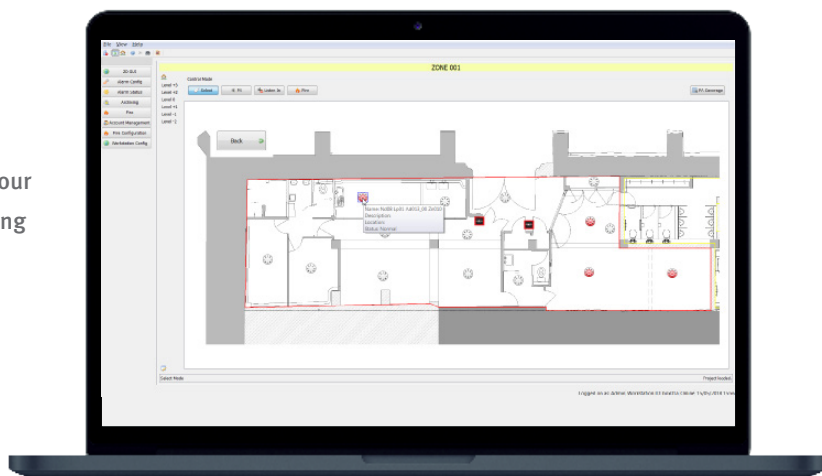
This bridge capability enables you to plan and develop a fire system in line with fire safety requirements to the latest product range, without causing budgetary difficulties. Importantly this can be done with minimal disruption to the occupants with less cost, stress and risk for all involved. Taktis Vision repeaters can also be installed on a Syncro network using the bridge feature, providing an easy-to-use, full-colour, touch-screen interface that delivers information on the status of the fire alarm system to single or multiple locations.



No situation requires a more urgent response than a fire event. On a large public site, especially during busy periods, public safety is paramount.

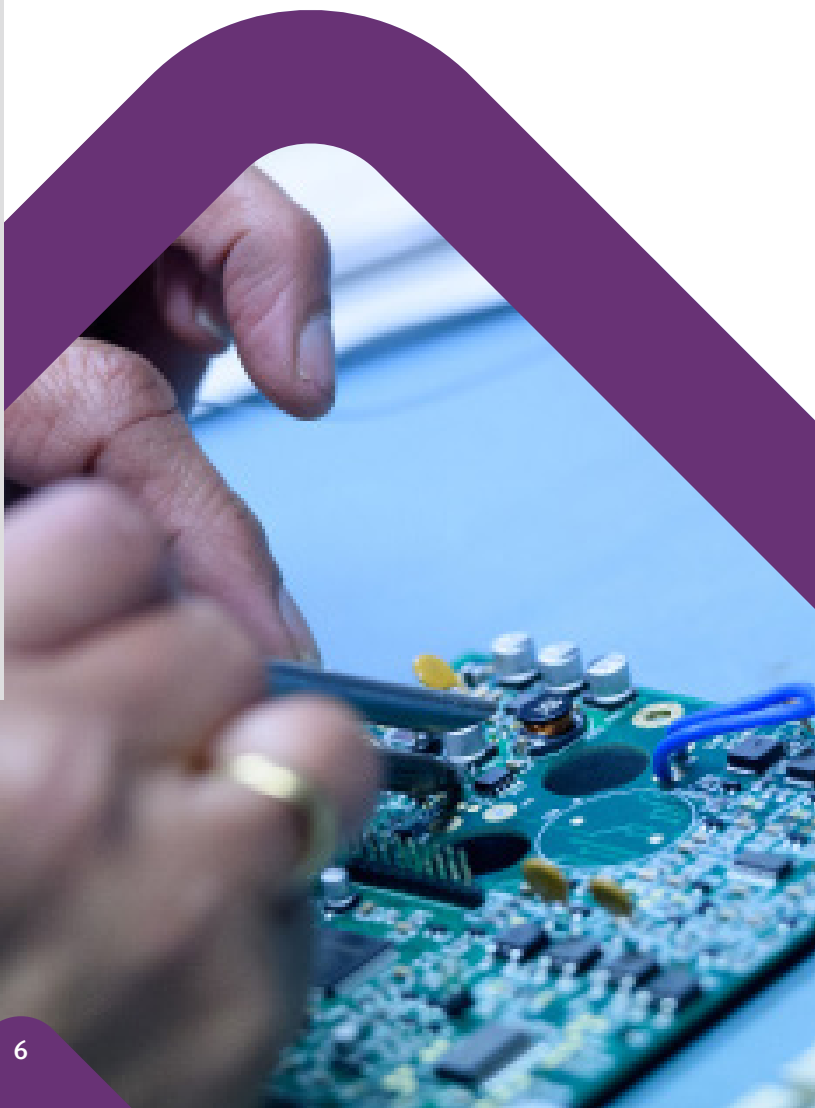
A powerful and sophisticated graphical representation of your sites, Ockular® gives building managers complete monitoring and control over fire detection, providing a comprehensive fire risk and incident management system.

Where time is of the essence, automated control aids site managers to respond quickly and efficiently to a fire event. Ockular plays a crucial role in safeguarding people, vitally important information and property.



Ockular Key Features

- › Supports dual screens, enabling visibility of 2D location images concurrently with active event lists and system management
- › Fully configurable on site using administrator login
- › Reports configuration mismatch errors – ensuring that the graphics system is properly maintained and updated whenever there are any panel configuration revisions
- › Powerful event log filtering and reporting
- › Manage the state of the fire system using a combination of graphical images and system controls
- › Programmable macro buttons to perform panel control operations
- › Full map navigation using configurable buttons or map areas
- › Device analogue value reporting
- › Perform device and zone disablements/enablenents



Sigma XT Extinguishant Control Panel

The industry leading Sigma XT extinguishant releasing panel, installed extensively in thousands of premises globally, offers outstanding value and performance for all small to medium fixed firefighting installations.

With three detection zones as standard, extinguishant release can be configured to activate from any combination of detection zone inputs.

Sigma XT panels are robust and easy to install, with all electronics mounted on a single, easily removable, steel plate.



Sigma XT Features

- Any single zone or any combinations of zones can be configured to release
- Configurable first stage sounder delays
- Configurable detection delays
- Zero time delay upon manual release option
- Compatible with I.S. barriers
- Non-latching zone input option to receive signals from other systems such as aspirating equipment
- Countdown timer shows time remaining until release
- Supports up to seven four-wire status indicators
- Approved and certified to EN12094-1, EN54-2 and EN54-4
- UL and FM listed version also available

Sigma ZXT Extinguishant Control Panel

With 1000 Event Log

A development of its proven Sigma XT range, the Sigma ZXT provides controls and indications for a single-area extinguishing release system, enabling targeted extinguishing that limits damage and reduces costs. Three conventional detection zones provide the alarm 'trigger' required to activate the release of extinguishant, and the system can be configured to release the extinguishant on an alarm from any single zone or combination of multiple zones.

The Sigma ZXT has an event log which records event data from the panel such as alarms, faults, configuration changes etc. along with a time and date stamp. This historical visibility is critical for diagnostics, identifying the cause of alarms and faults, as well as reasons for activations. Up to 1000 events can be stored within the panel which can be viewed through the LCD or can be downloaded and saved using Kentec's LE2 software.

The system, compliant with EN12094-1, can also be configured to provide two extinguishing outputs, either working together as common outputs or as main and reserve outputs. The latter results in the connection to two sets of extinguishing gas cylinders, which enables the customer to return a system to a functional state, quickly, following a release.

A sophisticated, dynamic LCD, which supplements the LED status indicators, provides detailed information on panel status including fault conditions, alarm conditions and extinguishing release countdown. If dynamic mode is chosen, the display changes colour in relation to the panel status, providing immediate and clear visibility of status conditions.

These are as follows:

White – Normal condition

Red – Fire condition, Released condition

Red flashing – During countdown to the released condition

Yellow – Fault condition, Disabled condition and Test condition

Green – Access level 2

Turquoise – Access level 3

While not in dynamic mode, the LCD will be white regardless of status.

To complement the Sigma ZXT a range of status indicators which match the look of the Sigma ZXT panel fascia. Status units can be located at any access point to the risk area notifying approaching persons of system status, as well as providing optional Auto/Manual key switches and Manual Release pushbuttons.



Features

- 1000 event log
- Single area extinguishing panel
- Dual extinguishing outputs
- Dynamic LCD Display
- Compatible with I.S. barriers
- Non-latching zone input option to receive signals from other systems such as aspirating equipment
- Countdown timer displays time remaining until release
- Supports up to seven, four-wire status indicators
- Sigma ZXT status units
- Compatible with SI status units
- Larger enclosure option is available
- Approved and certified to EN12094-1, EN54-2 and EN54-4

Sigma XT+ Multi-Area Extinguishant Control Panel

The Sigma XT+ range combines Sigma CP conventional fire detection from two to eight zones with highly configurable extinguishing control modules to provide an integrated control solution for extinguishing systems with up to four protected areas.

The fire detection section connects to the extinguishant control modules via a serial link which allows secure, bi-directional transfer of data between the two. Sigma XT+ modules may be mounted remotely in separate enclosures and connected to Sigma CP panels via this serial interface to provide central fire detection and control with distributed extinguishing systems.

Sigma XT+ modules may also be mounted separately from fire detection and control equipment and activated by addressable output modules or volt-free contacts from other systems via two monitored activation inputs.



Sigma XT+ Features

- Two, four or eight detection zones
- One to four extinguishant areas
- Dual extinguishant outputs for each area (configurable as Main/Reserve)
- First and second stage sounder outputs for each area
- First and second stage volt-free changeover contacts for each area
- Released volt-free contact per area
- Fault volt-free contact per area
- Programmable extinguishant delays
- Programmable output duration
- Countdown indicator displays time until release in seconds
- Mode select and manual release controls per area
- Monitored remote manual release input, Abort input & Hold input
- Approved and certified to EN12094-1, EN54-2 and EN54-4



Syncro XT+ Multi-Area Addressable Extinguishant Control Panel

Syncro XT+ multi area addressable control panel enables extinguishing systems to use all the features and benefits of the more sophisticated detection techniques provided by addressable fire detectors, as well as the other benefits of analogue addressable systems such as control of loop connected sounders, beacons and input/output modules.

With up to 16 zones of addressable detection over one or two loops it ensures every detector can contribute to the extinguishant release.

The Syncro XT+ has up to four extinguishing areas and two releasing outputs per area which can be controlled via simple coincidence detection or via more complex cause and effects configured by the Loop Explorer configuration programme.

Each extinguishant area has a comprehensive set of inputs and outputs and is configurable via the Loop Explorer configuration programme.

All extinguishant areas may have up to seven, serially connected Sigma Si status indication and control units or ancillary relay boards connected via a simple four-core cable.

With the addition of a Syncro network card, Syncro XT+ control panels can be networked to provide scalable extinguishing systems for all sizes of installation.



Syncro XT+ main features

- Up to four extinguishant areas (custom build options are available)
- Dual extinguishant outputs for each area (configurable as Main/Reserve)
- First and second stage sounder outputs for each area
- First and second stage volt-free changeover contacts for each area
- Released volt-free contact per area
- Fault volt-free contact per area
- Programmable extinguishant delays
- Programmable output duration
- Countdown indicator displays time until release in seconds
- Mode select and manual release controls per area
- Serial connections for Sigma Si status units and ancillary boards (K588)
- Approved and certified to EN12094-1, EN54-2 and EN54-4

Sigma CP Conventional Fire Alarm Control Panels

The Sigma CP range of conventional fire control panels are designed for the most demanding conventional fire detection and alarm system applications.

Easy to install, the Sigma CP is available with two, four or eight detection zones in standard or installation saving, 'two-wire' versions. The extensive range of configuration features available ensures suitability for new installations or panel replacements on older systems.

Configuration options are stored in non-volatile memory and are easily accessed via an intuitive user interface which allows the configuration data to be viewed and changed simply and efficiently.

Sigma CP control panels are compatible with most standard conventional detectors, call points and sounders and are also compatible with 'two-wire' detector bases from Apollo and Hochiki.



Features

- Two-wire and standard versions in two, four or eight zones
- Compatible for use on BS5839: Part 1: 2002 installations
- Two-wire repeaters and ancillary boards
- Fully programmable using simple menu options
- Single board construction
- Installer friendly
- Compatible with a wide range of detection devices
- Two monitored sounder outputs
- 3 Amp power supply
- Auxiliary power output
- Approved and compliant to BS EN54-2 and BS EN54-4



Vizulinx is an alarm management solution which enables you to monitor your fire systems remotely.

Highly configurable using an embedded web server and simple configuration wizard, it can be used to pass fire system events via e-mail, SMS, Modbus and BACnet message format using an IP connection.

Upgrade options to interface to two-way radio systems, ESPA telephone and pager units and speech diallers are available and future connectivity via GSM will be provided for sites where internet connectivity is not available.

Event notifications are triggered and processed immediately, and email or a mobile phone message can be routed to any number of recipients based on the Fire Alarm event types. These include fire, pre-alarm, fault, disable, in test, technical alarm and security.

As events are sent immediately, this reduces false alarms as it allows alarms to be investigated before sounding to prevent unnecessary evacuation.

Modbus and BACnet connectivity allows a simple, low cost integration into building management systems and the ability to monitor equipment via 16 switched inputs and configure custom messages allows support for conventional fire and extinguishing systems.

For managers of multiple sites, Vizulinx can keep them updated of fire alarm activity making it easy to manage and less time consuming.

This application is ideal for building managers and service providers.



Power Supplies (PSU)

The K25000 range of 24V DC power supplies are designed to meet the exacting requirements of fire detection, alarm and fire protection systems.

All models charge sealed lead acid batteries using sophisticated, temperature compensated charging and monitoring techniques to keep the batteries in the best possible condition.

A low battery voltage fault warning is given when the batteries reach the minimum terminal voltage recommended by the battery manufacturers.

A high series resistance in the battery supply circuit which would allow the power supply output voltage to fall outside of the specified range is indicated as a fault condition.

K25000 power supplies can be fitted with an optional dual output board to provide redundant power paths for fire alarm applications. They are available in a range of enclosures to accommodate different battery sizes.

Enclosures are designed to match both Sigma and Syncro AS fire panel ranges and are constructed from 1.2mm mild steel and are finished with epoxy powder coating.

The K25000 boxed range is available in the following power outputs:

- > K25250 range – 2.5A output and up to 12Ah batteries
- > K25400 range – 5.25A output and up to 26Ah batteries
- > K25800 range – 10.25A output and up to 45Ah batteries

Unboxed or caged power supplies for incorporation into other equipment are available as follows:

- > S2014 – 2.6A output*
- > S406 – 5.25A output
- > S408 – 10.25A output

*Available soon



Syncro AS Analogue Addressable 1-2 Loop Control Panels

Syncro AS is an analogue addressable fire control panel, available in either one or two detection loops. It combines compact and practical styling with the programming power and connectivity normally associated with much larger systems.

With its ease of use and simplicity to install, Syncro AS is straightforward to understand for installers, commissioning engineers and end users alike. Using the latest microprocessor, it provides a flexible control system with high reliability and integrity.

Being a multi-protocol panel, enabling choice to our customers, Syncro AS supports Apollo, Argus Vega and Hochiki detection, making it ideal for small and medium sites that require advanced fire sensing and evacuation options. It can be expanded and networked to become part of much larger systems if the need arises, therefore providing a future-proof solution for any size of installation.

Syncro AS is also available as a Lite version offering a cost-effective solution for smaller standalone installations requiring only one detection loop.

Features

- Expandable from one to two loops*
- Network up to 64 panels*
- Two programmable sounder circuits
- Five programmable inputs
- Three programmable relays
- 3A power supply
- Up to 512 additional programmable I/O via Syncro I/O modules*
- Powerful, network wide cause and effects*
- Sensitivity adjustment and Drift Compensation
- Compatible with View repeaters*
- Supports Apollo, Argus Vega and Hochiki protocols
- Stores 500 last events in event log
- Installer friendly, removable equipment chassis
- Different language and character set variants available
- Approved and certified to EN54-2/EN54-4

*Please note: these items not available on Syncro AS Lite panel.

If you require a Printer with a Syncro AS panel please view Datasheet.



Syncro View Local LCD Control Panel Repeater

Designed and manufactured to the highest standards in a quality-controlled environment, the Syncro View fire alarm annunciator provides a convenient method of extending the controls and indications of the Syncro AS fire alarm control panel to other locations.

The large, graphic LCD and high brightness LED indicators duplicate the indications on the Syncro AS fire alarm control panel at up to 15 additional locations via a simple, two-wire serial data connection.

The Syncro View is available in either a 24V DC powered option (which can be powered via an additional two cores from the Syncro AS control panel/local 24V DC supply) or a 230V powered option with local battery back up.

Features

- Up to 15 annunciators can be connected to each Syncro AS fire control panel
- Large liquid crystal display (240 x 64 pixels)
- High-brightness LED indications
- Internal sounder
- Replicates all Syncro AS panel controls
- Simple, two-wire serial connection
- Small, Syncro AS style enclosure
- Removable electronics for easy installation
- 24V DC or 230V AC power options
- Low power consumption
- Multi language options
- Connection monitored by Syncro AS fire control panel



Company Overview

Kentec Electronics is one of the world's leading life safety solutions manufacturers of conventional, analogue addressable fire detection and extinguishant control panels.

Founded in 1985, Kentec is an end-to-end manufacturer, with everything sold being made in the UK. It employs approximately 250 members of staff in its production facility, head office and research and development department.

In addition to design and manufacture, Kentec provides technical support specified to the local standards and customer requirements of over 90 countries worldwide. With a commitment to meeting the needs of individual national markets, Kentec has achieved a global reputation, resulting in its life safety systems being installed in numerous prestigious sites across the world.

Kentec manufactures products approved to EN54, EN12094, UL864 10th Edition, FM, NFPA, marine classification societies, RoHS 2 Compliant and CP10.



Units 25-27
Fawkes Avenue
Questor Dartford
Kent DA1 1JQ, England

+44 (0)1322 222121
sales@kentec.co.uk
www.kentec.co.uk

Distributed by:

This briefing is intended as general guidance and is not a substitute for detailed advice in specific circumstances. Although great care has been taken in the compilation and preparation of this edition to ensure accuracy, Kentec cannot in any circumstances accept responsibility for errors, omissions or advice given or for any losses arising from reliance upon information contained in this publication.