

*Kitchen and room planning concepts
of timeless elegance*

PURE

SieMatic







REDISCOVER

PURE INSPIRATION

A room can be an island: an oasis of peace and ease in which you can shed the hectic demands of everyday life like an overcoat. Generously designed forms, sensitively selected colors, and the avoidance of anything that is all too decorative create an atmosphere of soothing balance. Elementary simplicity that is understood the same way around the world. Relaxation with an inspirational effect. A place where your own personality can unfold. Because here the focus is on the person; not the furniture.

DESIGN TO YOUR HEART'S CONTENT

WELCOME TO THE “PURISTIC” WORLD OF SIEMATIC

Give enjoyment more space in your life. The *SieMatic PURE style collection* opens up a cornucopia of creative options, with room concepts integrating the functions of the kitchen with the architecture, perfectly and unobtrusively. The elegant minimalistic language of form of the furniture elements from the *SieMatic PURE style collection* places the focus on what really counts: the lasting values of the exquisite materials and the precision of their workmanship down to the smallest detail.





THE FINE MEASURE OF ALL THINGS

PURIST DESIGN HAS ITS OWN PROFILE

With delicate frames, metallic materials, sophisticated wood, and nuanced lacquer hues, *SieMatic* has developed a new design language for the kitchen. Whether with or without handles, the focus is on newly developed front panels with narrow 6.5 mm frames. Carefully selected combinations of materials give rise to unique possibilities for purist ambience in kitchen design, from cool and technical to warm and homey. Perfectly harmonized with the front panels are countertops and side panels with a 6.5 mm appearance. The sensitive play of fine lines characterizes this design concept.



A PARISIAN PORTRAIT

OPPOSITES THAT ATTRACT



A realm of contrasts is created by the owners of this generous apartment in an older building in the heart of Paris. Their idea: “When black meets white, classic meets modern, and master craftsmanship meets perfect industrial processing, the result is interior design that could not be more exciting.”







A SURPLUS OF POSSIBILITIES

DISCOVER NEW LATITUDE FOR ALL OF YOUR IDEAS

Design with colors, forms, volumes, and materials that until now were only available to create atmosphere in living rooms. Create attractive accents with countertops. Turn walls and niches into eye catchers. And do so by selecting from a unique wealth of furniture elements of timeless elegance.

Because you don't buy a *SieMatic* "off the rack."
It is designed by your *SieMatic* specialist precisely in accordance with your wishes, equipped and planned to fit your life perfectly. Only then do we build it. Just for you.



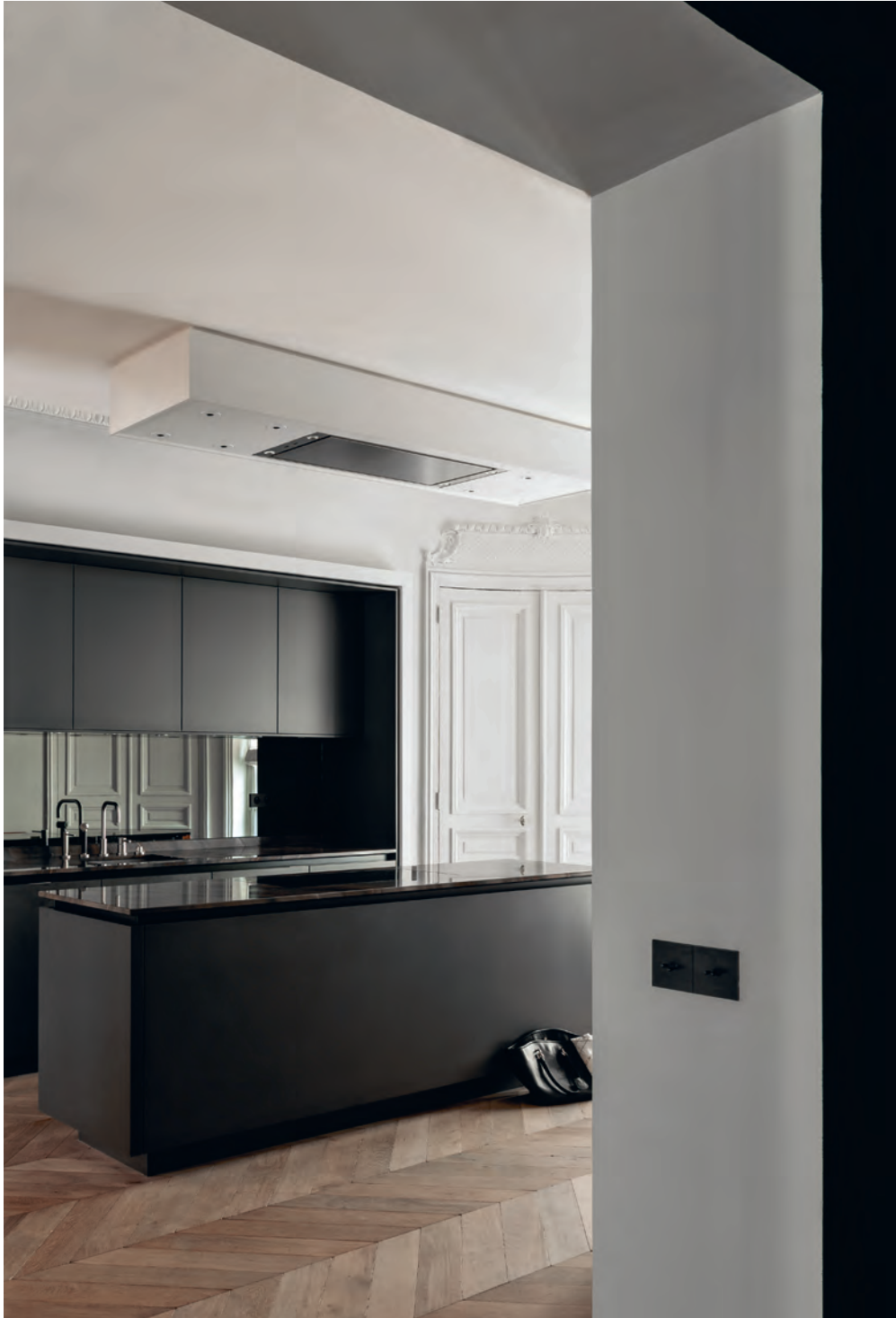
COMPETENT CONSULTING AND PROFESSIONAL PLANNING

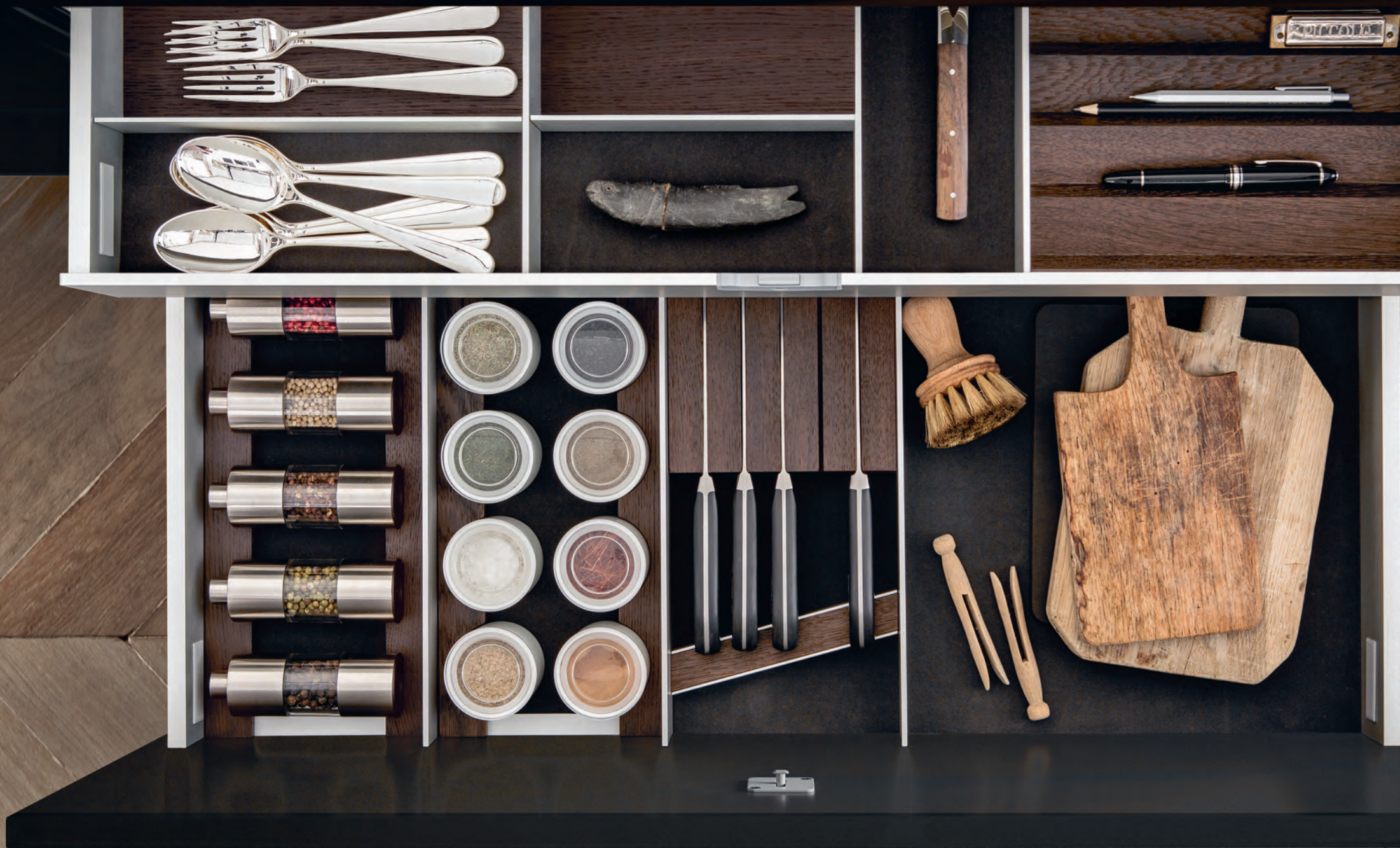
A VISIT THAT GIVES YOU A NEW PERSPECTIVE



SieMatic is at home anywhere. In apartments and lofts, row houses and villas, great metropolises and rural regions, and in 60 nations around the world. Wherever you encounter the name *SieMatic*, you will get a comprehensive picture of what is recognized as timelessly elegant kitchen design and the best combination of master craftsmanship and state-of-the art technology. Because your *SieMatic* specialist is always up to date on current aspects of interior design and technical innovation. And he or she is also an expert listener, who makes wishes come true and shows you new perspectives.

Your *SieMatic* specialist is looking forward to your visit. The fastest way to get there:
www.siematic.com/showrooms





UNIQUELY VERSATILE

THE HARMONIOUS COMBINATION OF EXTERNAL AND INTERNAL VALUE



Minimalist design emphasizes love of detail, the measure of perfection, and the value of select materials. That goes for the surfaces of the cabinet elements as well as their inner life. Behind every door and in every drawer, you will discover a perfect new world with *SieMatic*: material combinations that provide for fascinating harmony of form and color, inside and out.



SieMatic Pure

OUTSIDE AND IN: PURE HARMONY

THE SIEMATIC ALUMINUM INTERIOR ACCESSORIES

It is an aesthetic treat that is unique in its functionality and unmistakable in its graphic design. It was created with the innovative new material combination of aluminum, light oak or dark smoked chestnut, flock, and porcelain, as well as precise workmanship down to the smallest detail. Intelligent, contemporary ideas, like the integrated USB connection, offer valuable functions for the kitchen. The highly flexible system makes it possible to arrange and equip the drawers in a way that could not be more individual. *SieMatic Interior Accessories* have won many awards for their unique design.



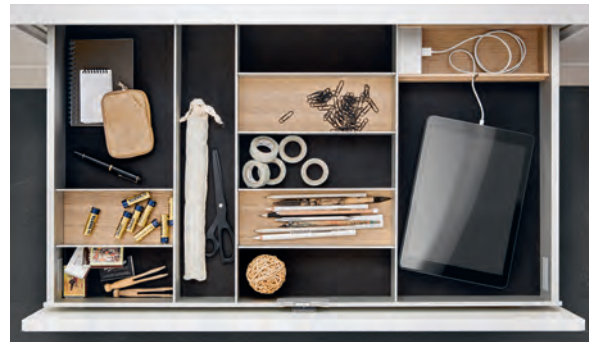


EVERYONE IS DIFFERENT.



BETTER SAFE THAN SORRY:

The GripDeck drawer bottom provides elegant protection against scratches and keeps pots from sliding.



DRAWERS YOU CAN LOAD UP:

Drawers with an integrated USB charging station keep tablets and smartphones out of the way.



UNLIMITED POSSIBILITIES:

With their versatile furnishing elements, drawers offer room for supplies and tall items.

SO IS EVERY SIEMATIC.



WIDE-RANGING SELECTION:

The variability of the system elements creates nearly infinite options for arrangement.



A GOOD MIXTURE:

A block for sharp knives of any length, spice mills and transparent jars.



NEAT SOLUTION:

If you want to turn the kitchen into living space, you will want to store more than cooking utensils there.

TRADITION AND INNOVATION

FROM THE CREATORS OF THE HANDLE-FREE KITCHEN



In 1960, *SieMatic* presented the first handle-free kitchen to the world, whose numerous innovations were celebrated as a revolution. Its design became a model for many, has been adapted sensitively to contemporary taste many times, and has won a number of awards.

After all, who should continue to develop an idea more ambitiously than its inventor? Thus *SieMatic* turned the first kitchen without handles and knobs into what is now the broadest range of planning options for friends of puristically designed, handle-free kitchens.







MORE IDEAS PER SQUARE METER

DO YOU KNOW THE DIFFERENCE BETWEEN A KITCHEN AND A SIEMATIC?

A kitchen is for cooking; a *SieMatic* kitchen makes cooking a pleasure. You can enjoy your whole life here, if you wish. Every day. Because a *SieMatic* offers options that go far beyond the usual kitchen designs and provides for virtually endless creativity in design – regardless of your space or budget.

The purist design language of this compactly planned, handle-free *SieMatic* with its perfectly aligned joints shows off the choice of high-quality materials in polished stainless steel combined with matt lacquer in “graphite grey” to their full advantage. Thanks to new *AntiPrint* coating, opening the doors with the touch of a finger leaves no trace, even on matt lacquer.







SOPHISTICATED INTEGRATION

IT IS NOT THE SIZE THAT COUNTS, BUT THE IDEA

Elegantly combining cooking and enjoying food is not a question of the available space. This ensemble of tall, wall, and base cabinets seems like a single piece of furniture and meets the highest demands for all the technical functions of a kitchen. The minimalist outer aesthetics conceal sophisticated ideas, such as handle-free doors and pull-outs that open automatically at just a light touch, or the disappearing tall cabinet door, which can make electrical appliances “invisible” when not in use. So that nothing disturbs the sophisticated atmosphere.





EASY ACCESS

As understated as it is practical: In the recessed niche right behind the countertop, you will find space for everything you want to keep right at your fingertips when cooking.



DELICATE FRAMING

A picture of calm results from using the same material in the same thickness for both countertop and side panel. Here we see the fine 6.5 mm framing in stainless steel.



PURITY OF ORDER

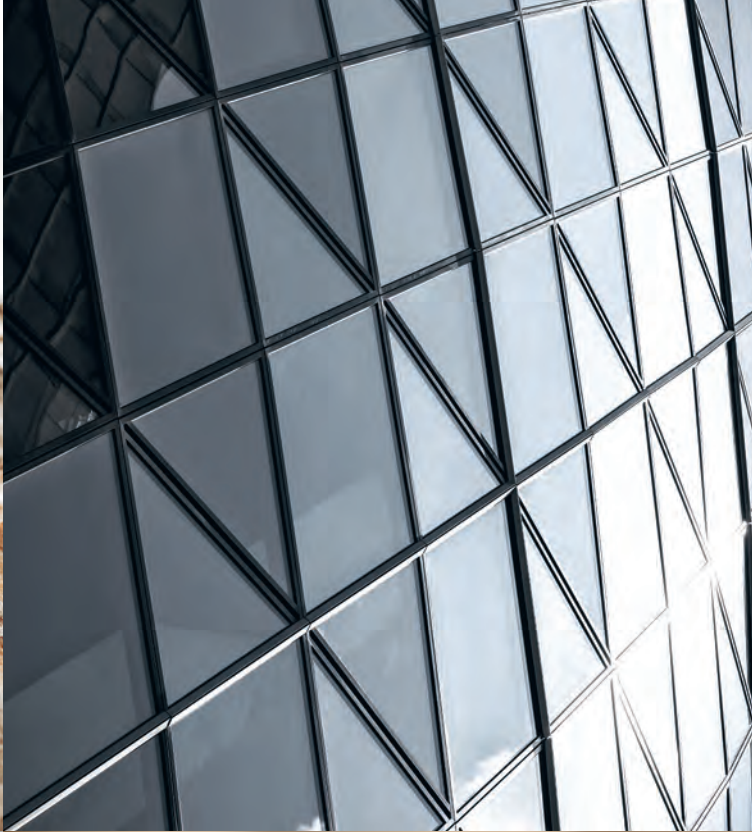
The MultiMatic Interior System can be put together individually, and you can easily add to or change it at any time.



ALL IN YOUR HEAD

The SieMatic faucet fixture with its clever head control system makes it possible to control water pressure and temperature conveniently with a hand or your forearm.









OPEN FOR ANYTHING

STILL A KITCHEN OR A LIVING SPACE INSTEAD?

The *FloatingSpaces* paneling system offers many elegant variations with fluid transitions between rooms and their functions, going beyond known planning solutions.

Panels and shelves can be planned down to the millimeter in nearly any surface design offered in the versatile *SieMatic* collections. Panels can be individually assembled, structured, and coordinated according to interior architectural requirements. Shelves are available in thicknesses of 13 mm and 28 mm, and in seamless lengths up to 260 cm.

They can be used tone-on-tone or in contrast with the surface of the panel wall.

This example shows veneer wall panels and tall cabinets in “*graphite oak*,” as well as base cabinets in “*lotus white*” superior quality gloss lacquer. Veneer shelves become a harmonious part of the whole, and lacquered shelves pick up white tones to form a captivating contrast.



CREATING FLUID TRANSITIONS

STILL A WALL, OR A CABINET INSTEAD?

The wall panels of the *SieMatic FloatingSpaces System* can also be used as kitchen cabinet doors, creating an elegant visual connection: from living and eating area to the fully equipped, highly functional cooking area.







THE KITCHEN AS REFLECTION
OF YOUR OWN PERSONALITY

WHAT YOU LOVE, YOU WANT TO SHOW, NOT HIDE

Design can speak volumes: The design of the things with which we surround ourselves tells of our wishes, dreams, and feelings. This is also true for the many utensils that are needed in the kitchen and have been selected with love. In this planning example, closed wall cabinets have been replaced by the highly flexible *SieMatic* panel system *FloatingSpaces*. The variable shelves, which are available in 13 mm or 28 mm thicknesses, almost seem to float and offer as much space as you wish for your beautiful and useful things. It is even possible to integrate an extraction hood.



SIEMATIC ROOM DESIGN CONCEPTS

INTERIOR DESIGN FOR THE KITCHEN AND BEYOND



In order to meet your very personal wishes and requirements perfectly, *SieMatic* develops more than just first-class kitchens: We also create design concepts for timelessly elegant living spaces, which perfectly reflect the personality of their owner. This example of a *SieMatic SE 3003 R* in “*umbra*” matt lacquer will appeal to many who love a relaxed, open atmosphere and would like to discreetly integrate the functions of the kitchen into the living space. The walls copy the hue of the furniture, creating a calm look that is in turn enlivened by the freestanding, half-height cabinets.







DESIGNING WITH LIGHT

Interior lighting turns the glass cabinet in brushed nickel into an attractive eye catcher and casts beautiful objects in the right light.



EASY ACCESS

The SieMatic handle integrated into the frame underscores delicate aesthetics. It is available in all SieMatic lacquer colors and in various metal surfaces.



HARMONIC COMPOSITION

The tone-on-tone design of “umbra” matt lacquer and “piatra grey” composite stone along with the equal proportions of side panel and countertop: aesthetically pure.



PERSONALITY RIGHT DOWN THE LINE

Whether lacquer, metal, or wood: The fine design of SieMatic 6.5 mm front panels speaks a language all its own.

CREATING ORDER HAS NEVER BEEN SO MUCH FUN

WOODEN INTERIOR ACCESSORIES

The material combination of the *SieMatic wood interior accessories*, which have won several design awards, looks like it was “*cast from a single mold*,” with white-grey oak, aluminum, and porcelain, elegantly connected by a light shade of grey. If you love natural, warm, and cozy; if you value precise workmanship; and if you appreciate a broad range of individual options, then you will enjoy a feast for the eyes every time you open a drawer.

The *SieMatic wood interior accessories system* also encompasses many elements that are as practical as they are decorative, including stackable porcelain jars and wooden boxes in various heights that can be labeled and re-labeled in pencil and provide optimal utilization of storage space, as well as the matching *GripDeck*, which keeps pots, pans, and large boxes of supplies from slipping.





FINE TUNING, CAREFUL REPETITION

THE HARMONY OF CONTRASTS



When a few selected colors are used simultaneously in different shades for furniture, walls, ceiling, and floor, the result is a composition that immerses the entire space in a comfortable, timelessly elegant atmosphere.

The play of matt and glossy surfaces in wood, metal, lacquer, and stone, reduced to shades of black and white, marks the contrast-rich yet harmonious design of this *SieMatic SE 3003 R*.

Even more surprising: The wall panels with their fine frames in “matt black oak” conceal plenty of useful storage space.



SENSUOUS AND SENSIBLE

ACHIEVING MORE WITH LESS. THAT IS GOOD DESIGN.

Different materials, one color: Brushed metal for the fronts of the pull-outs and the delicate handles integrated in the frames. *“Tiger matt black”* granite and *“nero marquina gloss”* marble for the countertop and niche walls. *“Black matt oak”* for the side panels and for the fronts of pull-outs, which can be opened with a slight touch to reveal additional storage space.





DESIGN WITH A CLEAR VIEW

FOR EVEN
MORE TRANSPARENCY:
SIEMATIC
GLASS CABINET DOORS

Glass cabinet doors with vertical slats make for particularly individual design elements in three *SieMatic* metallic hues: “*nickel*,” “*gold bronze*” and “*matt black*.” Their unique aesthetics create attractive accents, allow for versatile combinations, and elegantly enliven your kitchen design. They combine storage space with beauty – with or without interior lighting.





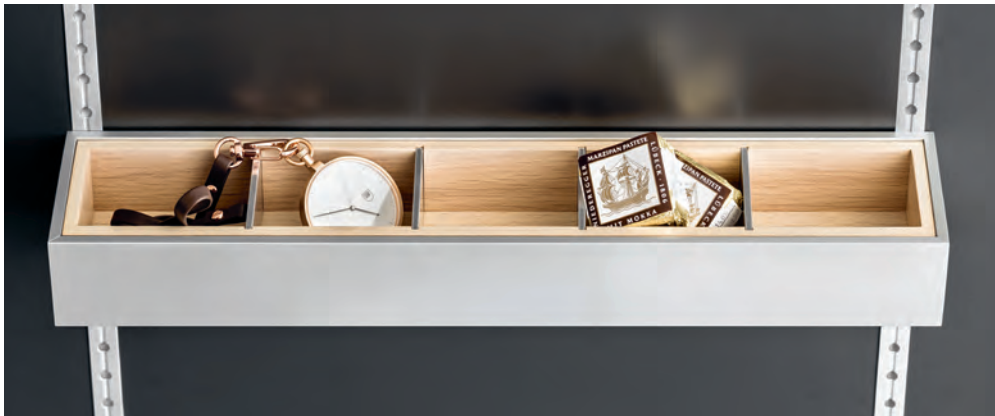
SIEMATIC MULTIMATIC

ORGANIZING YOUR HOME HAS NEVER BEEN SO MUCH FUN



With *MultiMatic*, the design philosophy of *SieMatic interior accessories* has been applied consistently for drawers and pull-outs in tall, wall, and base cabinets. This highly flexible interior design system exclusive to *SieMatic* offers the same aesthetic pleasure created by an elegant combination of materials, such as high-quality aluminum, precious wood, and fine porcelain – while also offering many new functions perfected down to the last detail, giving you up to 30% more storage space.





A PLACE FOR EVERYTHING:

Your lovely little treasures can rest in individually subdividable trays, on dark smoked chestnut or light oak.



GREATNESS ON A SMALL SCALE:

Precision, elegance and creativity are found in MultiMatic Aluminum interior furnishings, even in the smallest detail.



UP TO 30% MORE STORAGE SPACE:

With the MultiMatic interior design system, you get more out of your kitchen and don't waste an inch of space.



THE MULTIFUNCTION TRACK:

This patented SieMatic development elegantly turns your kitchen cabinets into highly flexible functional elements.

SIEMATIC QUALITY WORKMANSHIP

MINIMALIST DESIGN DEMANDS MAXIMUM PRECISION



Consistent abandoning of the superfluous – sounds simple, but it isn't. Concentrating on a few components in design does not allow for any compromises in workmanship. It reveals everything to the eye and touch: love of detail, degree of perfection, and, last but not least, quality of material. Because reducing stimuli sharpens the senses to what's essential. That is why the design principle of the *SieMatic style collection* PURE includes the consistent elimination of everything that could disturb the graphically clean look and sensual perception.







HIGH TECH MEETS NATURE

THE GREAT ART OF OMISSION

This example of a *SieMatic SE 4004 H* is marked by design with clean surfaces and lines, without any superficial decorative elements or ornamental add-ons, and without handles, knobs, or handle recesses. All the pull-outs and doors open automatically at a slight touch. This puts the focus on what's really of value: Sophisticated “*smoked oak*” was selected for the tall cabinets and prep island, bringing together the nuances of color in the sensitive room design in its vibrant, vertical grain. The shine of stainless steel surfaces provides an exciting contrast and frames the island with a delicate 1.3 cm thickness. The island unobtrusively integrates state-of-the-art appliances and a downdraft extractor hood.



OUTSTANDING DESIGN BRINGS JOY

TIMELESS ELEGANCE FOR VALUES YOU CAN LIVE IN FOR A LONG TIME

The world is full of products with a superficial attraction that rapidly fades. Good design that lasts for decades is not created until something is well thought-out and well made – and thus provides a timelessly elegant look. Furniture of recognized high design quality includes not just chairs, tables, and lights but also numerous *SieMatic* developments: kitchen programs and design elements that have received internationally recognized design awards and have earned their place in the history of product design.







“PERFECTION IS ACHIEVED,
NOT WHEN THERE IS NOTHING MORE TO ADD, BUT WHEN
THERE IS NOTHING LEFT TO TAKE AWAY.”

ANTOINE DE SAINT-EXUPÉRY
French author, 1900–1944

LESS IS MORE

CONCENTRATING ON THE ESSENTIAL REVEALS THE VALUE OF THE MATERIALS

A continuous veneer pattern with particularly expressive wood surfaces gives design the character of master craftsmanship. A beautiful example of this is this cozy-elegant design: A light hue of “*sterling grey*” matt combines with high-gloss dark “*graphite grey*” in the cooking area. Tall cabinet elements in exclusive walnut veneer create an optical link to the living room.





A SHELF WITH MANY FUNCTIONS

ROOM FOR IDEAS IN EVERY NICHE



The *SieMatic* light shelf element is truly multi-talented. Its various light functions – from perfect work light to atmospheric mood lighting – can be configured individually. Furthermore, it offers many versatile planning solutions and can be equipped with numerous functional elements.

REMARKABLY LIVABLE

THE MOST BEAUTIFUL COMBINATION
OF TRADITIONAL
CRAFTSMANSHIP AND INDUSTRIAL
PERFECTION



No material exudes as much natural warmth as wood – even more so when it is used across large spaces. However, achieving a consistently artistic look while using multiple sheets of veneer, as shown in this *SieMatic* example, requires the highest precision and craftsmanship: from those who carefully select, combine, and process the best veneer woods to those who put them together to create the perfect kitchen for you at home. Here, tall cabinets are used as room dividers, with expressive veneer grain patterns in fine walnut that create a comfortable yet elegant atmosphere, connecting the cooking area with the living area.







A great proportion of our materials are made of a recyclable material that can be regrown: wood. We procure it in accordance with the requirements of the Forest Stewardship Council® and from regional providers. This keeps transport distances and energy consumption to a minimum. State-of-the-art cutting systems ensure optimal utilization of materials at minimal waste. The remaining waste wood is recycled 100% or is transformed into energy in our own heating plants.

SUSTAINABILITY

PREFERRING THE BEST, INCLUDING FOR THE ENVIRONMENT

The term “sustainability” comes originally from the area of forestry and means caring for and using forest areas in ways that take ecological, economical, and social aspects into consideration.

But it is not just because wood is the most important material for *SieMatic* products that the topic of “sustainability” has always ranked highly here. True to our corporate motto, “Preferring the best,” *SieMatic*’s environmental efforts go far beyond the standard for the industry. Our goal, through a growing number of effective measures, is to make consistent and exemplary use of the latest ecological findings in every area of the company and to get confirmation of these measures and their results from a neutral party. Naturally, the testers in this area are also tested well, in order to ensure that the environmental certificates won by the company *SieMatic* and its products are serious, transparent, and meaningful.



THE SIEMATIC COLORSYSTEM

THE ART OF SETTING THE RIGHT TONE

Color is one of the most important design elements in interior design, because it spontaneously creates moods and feelings. The choice of colors determines whether a room is perceived as inviting, elegant, open, cool, or cozy.

Achieving a nuanced combination of the different materials and door panels used in a kitchen and creating the desired harmony require not only a highly sensitive use of colors but also a well conceived concept. That is why the *SieMatic ColorSystem* was developed. The colors are available in a range of attractive matt and glossy colors, making it possible to combine *SieMatic* furniture elements across all collections. Furthermore, the 1,950 individually selectable matt and glossy hues of the *SieMatic Individual ColorSystem* are also available in *SQ lacquer*.

FOR INFORMATION AND INSPIRATION

Immerse yourself in the possibilities provided by the *SieMatic Interior Design* system to plan, furnish, and design your own individual kitchen.

With your SieMatic specialist or at www.siematic.com



GLEAMING QUALITIES, INCLUDING MATT

SQ LACQUER SURFACES

Nowhere is furniture subject to more stress than in the kitchen. It is for this reason that, particularly there, materials of select quality and perfect workmanship should be used. With the *SieMatic* PURE lacquer programs, home furnishings radiate elegance without offering any point of vulnerability to the high stresses of the kitchen. This is because the exclusive *SieMatic SQ lacquer* front panels are manufactured in "Superior Quality," in an innovative lacquer process that provides for the greatest flexibility in planning and guarantees environmentally friendly, first-class quality "made in Germany." New *SieMatic AntiPrint* coating prevents fingerprints even on silky matt lacquered surfaces.

THE MOST ELEGANT WAY TO SPEND LESS

SIMILAQUE SURFACE

An alternative in look and price to the exclusive *SieMatic SQ lacquered* front panels is provided by *SieMatic SimiLaque* front panels in matt or high-gloss, which also have an elegant, high-quality look. Here, too, new *SieMatic AntiPrint* coating prevents fingerprints even on silky matt surfaces.

A MATERIAL WITH MANY GOOD SIDES

LAMINATE SURFACES

SieMatic furniture front panels in high pressure laminate or HPL are also available in matt and gloss; they are highly durable, extremely easy to care for, and hygienic. They have a perfect, high-quality look and an astonishingly natural effect in wood grain designs such as "*wild oak*," "*provence oak*," or "*titan pine*."

FROM NATURE TO THE KITCHEN

WOOD SURFACES

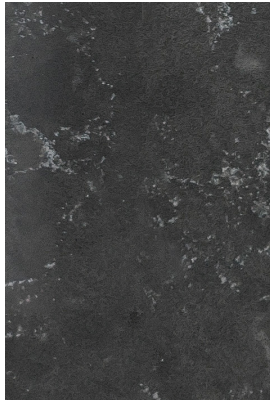
As a surface material, wood still continues to enjoy great popularity, because it exudes natural warmth like no other material. Front panel or veneer, matt or glossy: *SieMatic Kitchen Interior Design* offers a great variety of woods. Particularly expressive varieties with a continuous veneer pattern give surface design the character of master craftsmanship.

COUNTERTOPS AND NICHES
AS DESIGN ELEMENTS

EVERY MATERIAL HAS ITS PARTICULAR QUALITIES

In kitchen design, the appearance and nature of the countertops play an essential role. Whether homey or practical, impressive or functional, the character of the kitchen can be emphasized or contrasted through the selection of the countertop and niche material. The range of high-quality countertop designs is extraordinarily high at *SieMatic* – from the material, to the thickness, to the design of the edge, you have the freedom of choice. Whichever you chose: Even the most extravagant material is refined to such a degree at *SieMatic* that it is suitable for even the most intense demands in the kitchen.





**EXCLUSIVE
NATURAL STONE**

Whether marble, granite, slate, limestone, quartzite, or volcanic stone: The particular charm of countertops of natural stone lies in the irregularity of their surface, which distinguishes them distinctly from industrially manufactured materials.



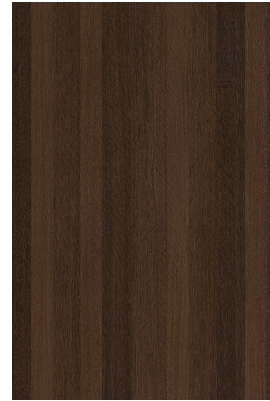
**IMPRESSIVE
COMPOSITE STONE**

Composite stones consist of more than 90% of natural quartz, to which resins and colorings are added. Although comparable in hardness and density to natural stone, they always have uniform surface colors and structures.



**DURABLE
CERAMIC**

Ceramic is a homogeneous, hard material, in a single color or with a natural, marble-like look. The fired surface is impervious to water, can be recycled, and is absolutely food-safe, so that no impregnation is required. In addition, it is incredibly scratchproof, acid-resistant, and easy to care for.



**HOMELY
WOOD**

Because of their especially hard, nonporous surface, woods like oak, walnut, maple, and bamboo are ideal countertop materials. High-quality SieMatic craftsmanship gives them a sophisticated look, which fits elegantly and harmoniously into just about any kitchen.



**PROFESSIONAL
STAINLESS STEEL**

Stainless steel is a tough, hygienic material, whose professional appeal is not impaired by the traces of use; it gets even more beautiful as time goes by. Whether as a complete countertop or as a design accent.



**VERSATILE
LAMINATE**

SieMatic laminate countertops have a very resistant, hygienic surface of layered material and are available in a wide selection of decors and edge designs, which permits harmonious color choices that are perfectly attuned to the front panels and surrounding elements.



SIEMATIC STONEDSIGN

EXCLUSIVE COUNTERTOPS AND NICHE PANELS

Countertops and niche panels of real natural or composite stone are timelessly beautiful, incomparably elegant, and enhance the character of a kitchen. However, countertops of massive stone are usually offered by their manufacturers only in a few designs. In contrast, *SieMatic StoneDesign* offers numerous variants to expand planning latitude. Because these countertops consist of a light support material, topped by a 1-cm-thick slab of granite, marble, slate, limestone, volcanic stone, or composite stone. This way, countertops can be made in thicknesses, lengths, and areas that are free of joints, which otherwise would be hardly supportable – thus opening up many design alternatives. *SieMatic* countertops can be crafted not only from many different types of stone in thicknesses from 6.5 to 140 mm, but also with a wide variety of edge designs: embossed or chiseled, elliptical or mitered, and also in the popular 1 cm look, or with the new, especially delicate 6.5 mm edge.

And of course, beyond that, *SieMatic Kitchen Interior Design* also offers a rich selection of variants in wood, stainless steel, ceramic, and high-quality laminate, which can also be combined well with *SieMatic StoneDesign*.

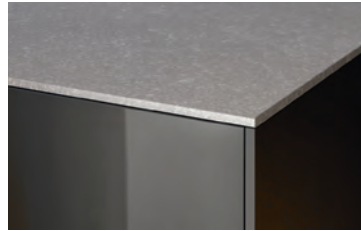
THE EDGE DESIGNS FOR SIEMATIC STONEDSIGN

MANY THICKNESSES, MANY OPTIONS



6.5-MM LOOK

An attractive innovation is the newly developed SieMatic StoneDesign countertop with a visible thickness of just 6.5 mm. Its delicate lines underscore the elegance of purist design.



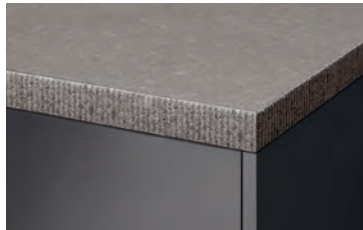
1 CM LOOK

Its delicate charm is created by the mere 1 cm thickness of the stone surface, combined with an invisible support structure, which ensures great stability and makes it possible to utilize every kind of stovetop and sink.



MITERED EDGE

The mitered and bonded sheets and edges give the appearance of a massive countertop 3 to 14 cm thick, to showcase the full beauty of the high-quality stone.



CHISELED EDGE

Working a stone with a chisel is a very old art. It is suitable for SieMatic StoneDesign countertops that are intended to have a particularly decorative function in the kitchen design.



ELLIPTICAL EDGE

The polished surface of the edge is created in a complex, high-precision, surface finishing process. Its decorative character further underscores the elegance of the countertop.



EMBOSSSED EDGE

Embossing means dressing stones as done in the architecture of antiquity and the Middle Ages. Stone plate edges dressed using this type of craftsmanship bring out the natural, original character of the stone.





siematic.com