

Schlüter®-BARA-RKK/-RKKE

Edge profile

Attachment on sloped screed

5.24

Product data sheet

Application and Function

Schlüter®-BARA-RKK/-RKKE are T-shaped finishing profiles with a short drip lip for the exposed edges of covering assemblies on balconies and terraces with finished sloped screeds.

Schlüter®-BARA-RKK is designed for assemblies with the bonded uncoupling membrane Schlüter®-DITRA 25. Its closed outer edge gives the exterior perimeter of tiled areas a neat appearance. **Schlüter®-BARA-RKKE** is particularly suited for assemblies with the bonded drainage mat Schlüter®-DITRA-DRAIN. Its perforated outer edge gives the exterior perimeter of tiled areas a neat appearance.

Furthermore, the profile covers the exposed edges of the bonded drainage mat Schlüter®-DITRA-DRAIN, which is installed below the covering. The cross-section of the profile openings is sufficiently large to guarantee drainage and ventilation. Schlüter®-BARA-RKK/-RKKE creates a neat finish and protects the exposed edges from weather influences and corrosion. The trapezoid perforated anchoring leg of the profile is attached to the exposed edges with a dry-set tile adhesive.

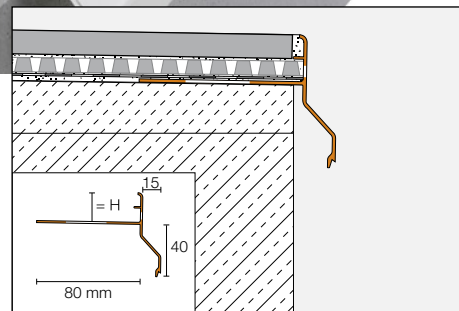
The bonded waterproofing mat Schlüter®-KERDI may be installed over the perforated anchoring leg and the adhesive flange of the profile, using the sealing adhesive Schlüter®-KERDI-COLL. If trowel-applied bonded waterproofing products are used, the installation instructions of the manufacturer must be observed.



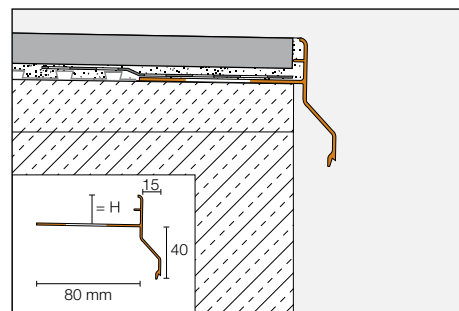
Thanks to the short design of the drip lip, Schlüter®-BARA-RKK/-RKKE is particularly well suited for balconies and terraces with railings mounted on the front side.

Material

Schlüter®-BARA-RKK/-RKKE are made of chromated, colour coated aluminium.



Installation of Schlüter®-BARA-RKKE



Installation of Schlüter®-BARA-RKK



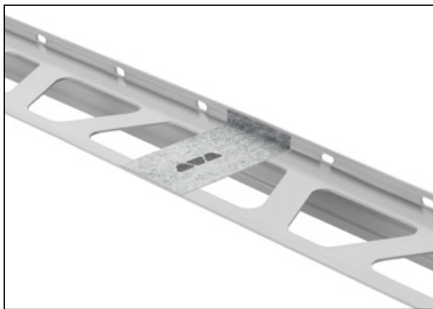
Material properties and areas of application:

The coating on the aluminium profile is colour-stable, as well as UV- and weather resistant. Visible surfaces should be protected against abrasion. In special cases, the suitability of Schlüter®-BARA-RKK/-RKKE must be verified based on the anticipated chemical and mechanical stresses.

Installation of Schlüter®-BARA-RKK



Installation of Schlüter®-BARA-RKK



Waterproofing of abutting seams with Schlüter®-BARA-HV

1. Select Schlüter®-BARA-RKK according to the tile thickness.
2. As an angled finishing profile, Schlüter®-BARA-RKK is embedded into the thin-set adhesive setting material with the trapezoid perforated anchoring leg aligned at the edge of the screed. Completely cover the anchoring leg with adhesive. Seal the abutting seams of the profiles with the self-adhesive anchoring fleece Schlüter®-BARA-HV (see photo).
3. Install Schlüter®-DITRA 25, abutting the anchoring leg. The connection with the profile is established with the seaming tape Schlüter®-KERDI-KEBA. Use the sealing adhesive Schlüter®-KERDI-COLL to attach the seaming tape with an overlap of at least 5 cm on Schlüter®-DITRA 25, covering the entire anchoring leg and reaching the angled edge of Schlüter®-BARA-RKK. The system is now ready for the installation of tiles in the thin bed adhesive in accordance with the installation instructions of data sheet 6.1, Schlüter®-DITRA 25. Maintain a proper joint between the tiles and the anchoring leg of Schlüter®-BARA-RKK, to be filled with elastic grout.
4. If using a trowel-applied sealing compound, align the trapezoid perforated anchoring leg of Schlüter®-BARA-RKK in the waterproofing assembly at the exposed edge. The waterproofing material must reach the angled edge of the profile. Observe the installation instructions of the manufacturer for the installation of bonded waterproofing systems.

Installation of Schlüter®-BARA-RKKE

1. Select Schlüter®-BARA-RKKE according to the tile thickness.
2. As an angled finishing profile, Schlüter®-BARA-RKKE is embedded into the thin bed adhesive setting material with the trapezoid perforated anchoring leg aligned at the edge of the screed. Completely cover the anchoring leg with adhesive. Seal the abutting seams of the profiles with the self-adhesive anchoring fleece Schlüter®-BARA-HV (see photo).
3. Use the sealing adhesive Schlüter®-KERDI-COLL to adhere Schlüter®-KERDI, covering the entire anchoring leg and reaching the angled edge of Schlüter®-BARA-RKKE.
4. If using a trowel-applied sealing compound, align the trapezoid perforated anchoring leg of Schlüter®-BARA-RKKE in the waterproofing assembly at the exposed edge. The waterproofing material must reach the angled edge of the profile. Observe the installation instructions of the manufacturer for the installation of bonded waterproofing systems.
5. The bonded drainage membrane Schlüter®-DITRA-DRAIN is adhered over the bonded waterproofing assembly. Make sure to continue the membrane to below the joint spacer integrated in the profile. The profile heights 21 and 23 mm are also suitable for use with Schlüter®-DITRA-DRAIN 8. It must be assured that the drainage space is not fully closed, including during the installation of the covering materials.
6. The system is now ready for the installation of tiles in the thin bed adhesive in accordance with the installation instructions of data sheet 6.2 Schlüter®-DITRA DRAIN. Maintain a proper joint between the tiles and the anchoring leg of Schlüter®-BARA-RKKE, to be filled with elastic grouting.

Note: Pre-formed parts are available for interior and exterior corners. Abut the profile ends of Schlüter®-BARA-RKK/-RKKE, leaving a joint of approx. 5 mm, which is to be covered by clip-on connectors.

The applicable installation instructions and guidelines for the covering assemblies must be observed. All materials used in the assembly must be weather-resistant, waterproof, and suitable for outdoor areas.



Notes

Schlüter®-BARA-RKK/-RKKE require no special maintenance or care. The powder-coated surface of the aluminium profile is UV resistant and colour-stable. Damaged visible surfaces can be restored with paint.

Product Overview:

Schlüter®-BARA-RKK

Colours: PG = pastel gray, GM = gray metallic,
SB = black brown

Supplied length: 2.50 m

Colours	PG	GM	SB
H = 10 mm	•	•	•
H = 15 mm	•	•	•
H = 18 mm	•	•	•
External corner 90°	•	•	•
External corner 135°	•	•	•
Internal corner 90°	•	•	•
Connector	•	•	•

Schlüter®-BARA-RKKE

Colours: PG = pastel gray, GM = gray metallic,
SB = black brown

Supplied length: 2.50 m

Colours	PG	GM	SB
H = 8 mm	•	•	•
H = 10 mm	•	•	•
H = 15 mm	•	•	•
H = 18 mm	•	•	•
H = 21 mm	•	•	•
H = 23 mm	•	•	•
External corner 90°	•	•	•
External corner 135°	•	•	•
Internal corner 90°	•	•	•
Connector	•	•	•

H = 21 and 23 mm are also suitable for use with
Schlüter®-DITRA-DRAIN 8

Text template for tenders:

_____ linear meters of Schlüter®-BARA-RKK, as a T-shaped finishing profile made of coated aluminium with a short drip lip and a closed upright edge, to be supplied and professionally installed in edge area over a finished sloped screed with the trapezoid perforated anchoring leg, while observing the manufacturer's instructions. Accessories such as interior and exterior corners and connectors are to be
☐ included in the unit prices,
☐ charged separately

Profile height: _____ mm
 Colour: _____
 Art. no: _____
 Material: _____/m
 Labour: _____/m
 Total price: _____/m

Text template for tenders:

_____ linear meters of Schlüter®-BARA-RKKE, as a T-shaped finishing profile made of coated aluminium with a short drip lip and a perforated upright edge, to be supplied and professionally installed in edge area over a finished sloped screed with the trapezoid perforated anchoring leg, while observing the manufacturer's instructions. Accessories such as interior and exterior corners and connectors are to be
☐ included in the unit prices,
☐ charged separately

Profile height: _____ mm
 Colour: _____
 Art. no: _____
 Material: _____/m
 Labour: _____/m
 Total price: _____/m

