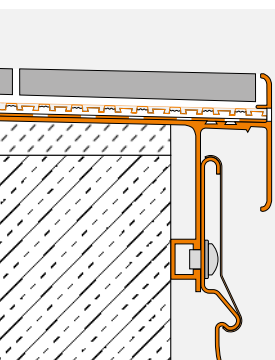


Balcony and Terrace Assemblies

Variations 1 - 8



PROFILE OF INNOVATION

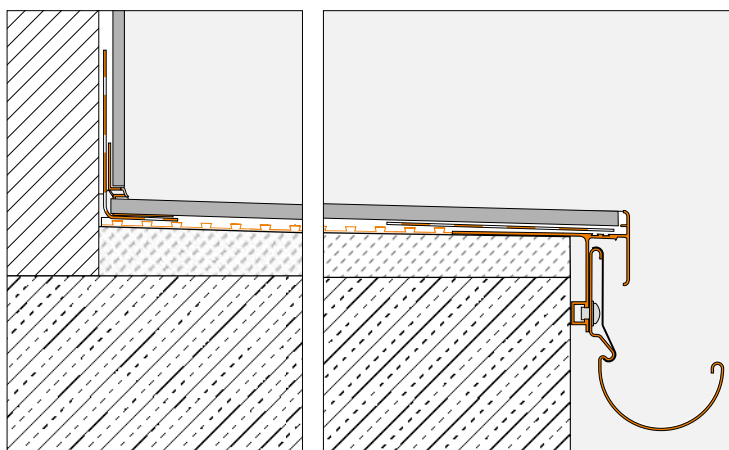


Covering assembly with Schlüter®-DITRA 25

Bonded waterproofing – Uncoupling – Vapour pressure equalisation on load bearing, sloped substrates

Schlüter®-DITRA 25 is a waterproofing mat for use with coverings made of tiles, natural stone and pavers. In addition to waterproofing, Schlüter®-DITRA 25 provides an uncoupling function that neutralises the stresses occurring between the substrate and the tile covering as a result of temperature fluctuations. Due to the vapour pressure equalisation function of Schlüter®-DITRA 25, the residual moisture of the substrate (e.g. in green concrete) is safely managed.

- ① **Cantilevered concrete slab.**
- ①a **Sloped screed.**
The construction must be sufficiently sloped (1.5 - 2%) to allow for proper drainage.
- ② **Schlüter®-BARA-RTKEG**
Edge profile with drip lip and attachment mechanism for the Schlüter®-BARIN gutter system.
- ③ **Schlüter®-DITRA 25**
Special polyethylene mat that provides waterproofing, uncoupling and vapour pressure equalisation.
- ④ **Schlüter®-KERDI-KEBA**
Polyethylene sealing band with laminated fleece on both sides for anchoring in the sealing adhesive Schlüter®-KERDI-COLL-L, designed to create waterproof wall transitions, joints and connections.
- ⑤ **Schlüter®-DILEX-EKE or -EF**
Single piece corner profile for flexible floor/wall transitions in balconies.
(Terrace assemblies: use Schlüter®-DILEX-EK).
- ⑥ **Schlüter®-RONDEC, -JOLLY or -QUADEC**
Profiles for neat finishing of tiled skirtings, available in numerous colours and finishes.
Material: Stainless steel or aluminium.
- ⑦ **Schlüter®-BARIN**
Gutter system for draining balconies and terraces, made of colour coated aluminium with full set of matching system accessories.
- ⑧ **Ceramic tiles or natural stone pavers.**
Installed with a waterproof and frost resistant dry set adhesive.

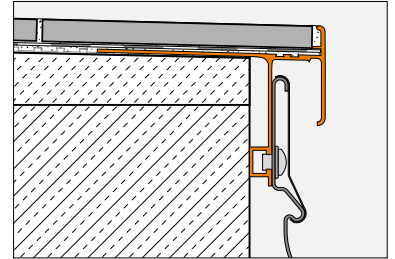


The assembly shown here only applies to cantilevered balconies and ground level terraces (with modified edge assemblies).



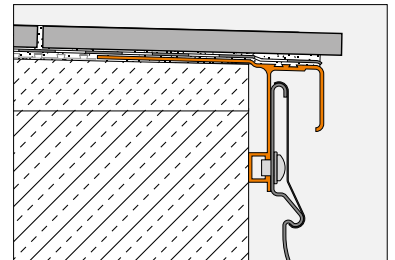
Schlüter®-BARA-RTKEG

Schlüter®-BARA-RTKEG is a finishing profile with drip lip for installation over finished sloped screeds. The profile features a T shaped profile chamber for attachment of the gutter system **Schlüter®-BARIN**. It is specifically designed for use with the bonded uncoupling membrane **Schlüter®-DITRA 25**. The closed outer edges give the exterior perimeter of tiled areas a neat appearance.



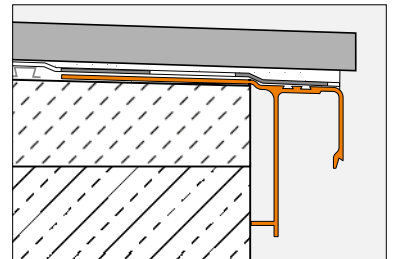
Schlüter®-BARA-RTK

Schlüter®-BARA-RTK is a finishing profile with drip lip for installation over finished sloped screeds. The profile features a T shaped profile chamber for attachment of the gutter system **Schlüter®-BARIN**. A profile of the **Schlüter®-JOLLY** series can be installed over the grooved transition to the drip lip to protect the edge of the tile. As an alternative, tiles may also be installed with an overhang.



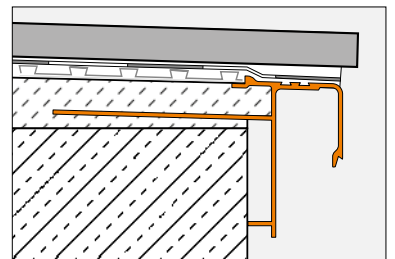
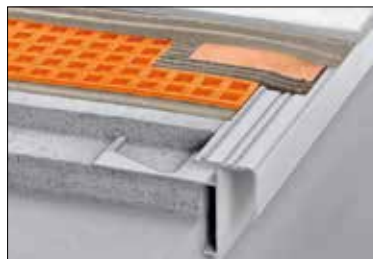
Schlüter®-BARA-RAK

Schlüter®-BARA-RAK is a balcony edge profile with drip lip made of colour coated aluminium. It is installed in the perimeter area of finished sloped screeds, where it serves as a finishing profile and drip lip. **Schlüter®-BARA-RAK** does not provide any attachment options for the **Schlüter®-BARIN** gutter system. However, the gutter system can be attached with the help of additional drill holes, with a diameter of 7 mm.



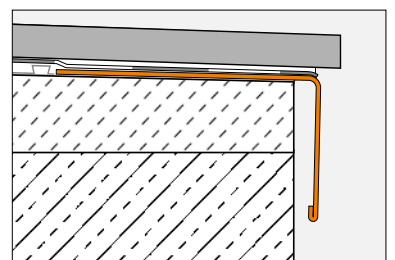
Schlüter®-BARA-RAM

Schlüter®-BARA-RAM is an edge profile with drip lip made of colour coated aluminium. It is aligned at the correct height in the perimeter area of the fresh concrete to serve as a screeding guide for the sloped screed. **Schlüter®-BARA-RAM** does not provide any attachment options for the **Schlüter®-BARIN** gutter system. However, the gutter system can be attached with the help of additional drill holes, with a diameter of 7 mm.



Schlüter®-BARA-RW

Schlüter®-BARA-RW is a T shaped edge profile of stainless steel or colour coated aluminium for covering exposed edges of balconies and terraces.





Covering assemblies with Schlüter®-KERDI and Schlüter®-DITRA-DRAIN

Bonded waterproofing – Drainage - Uncoupling

The bonded waterproofing membrane **Schlüter®-KERDI** protects the sufficiently sloped support structure against permeating water. The bonded drainage membrane **Schlüter®-DITRA-DRAIN** is installed over the waterproofing layer in thin-bed tile adhesive. Schlüter®-DITRA-DRAIN provides broad based ventilation of the bonded ceramic tile covering, which promotes the quick and even drying/curing of the thin-bed tile adhesive. Due to the uncoupling function of Schlüter®-DITRA-DRAIN, any stresses occurring in the substrate are effectively neutralised.

① Cantilevered concrete slab.

①a Sloped screed or sloped load bearing substrate.

The construction must be sufficiently sloped (1.5 - 2%) to allow for proper drainage. For alternative substrate assemblies, please contact us for advice.

② Schlüter®-BARA-RTKE

Edge profile with drip lip and attachment mechanism for the Schlüter®-BARIN gutter system. The cross section of the profile openings is sufficiently large to guarantee proper drainage and ventilation.

Keep drainage openings unobstructed!

③a Proprietary waterproofing assembly (please contact us for advice)

④ Schlüter®-KERDI-KEBA.

Polyethylene sealing band with laminated fleece on both sides for anchoring in the sealing adhesive Schlüter®-KERDI-COLL-L, designed to create waterproof wall transitions, joints and connections.

⑤a Schlüter®-DITRA-DRAIN 4

Polyethylene drainage mat installed with the thin-set method, for bonded drainage, ventilation and bonded uncoupling.

⑤b Schlüter®-DITRA-DRAIN 8

Special bonded drainage membrane for large areas and staircase assemblies.

⑥ Schlüter®-DILEX-EKE or Schlüter®-DILEX-EF.

Single piece corner profile for flexible floor/wall transitions in balconies.
(Terrace assemblies: use Schlüter®-DILEX-EK).

⑦ Skirting tiles.

⑧ Schlüter®-BARIN.

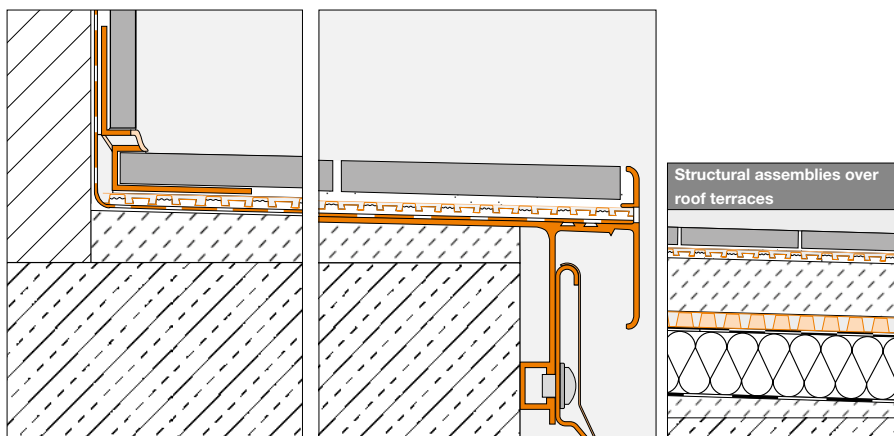
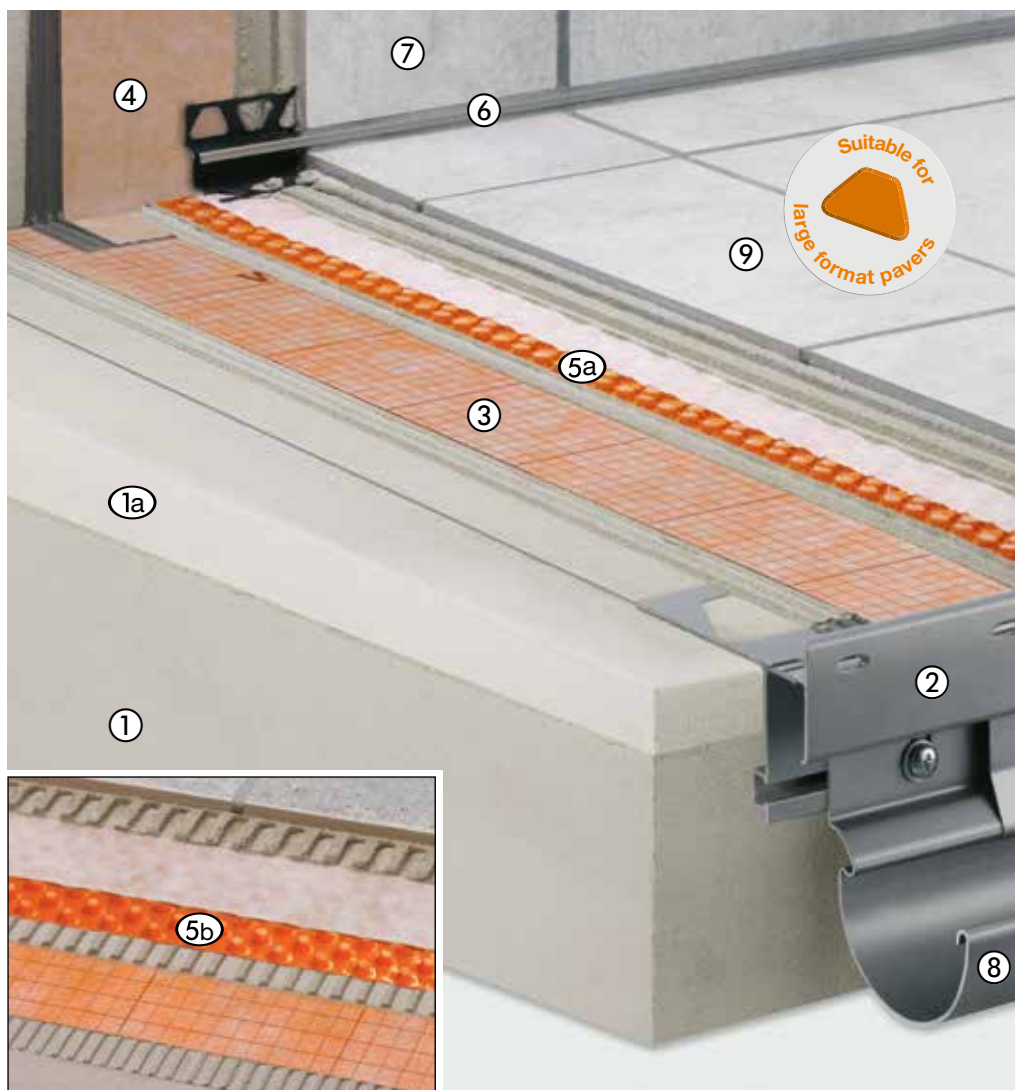
Gutter system for draining balconies and terraces; made of colour coated aluminium with full set of matching system accessories.

⑨ Ceramic/stone tiles or natural stone pavers.

The following minimum requirements apply to balconies/terraces designed for residential or moderate commercial use:

- Schlüter®-DITRA-DRAIN 4
Tile dimensions: from 5 x 5 cm,
thickness: from 5 mm
- Schlüter®-DITRA-DRAIN 8
Tile dimensions: from 10 x 10 cm,
thickness: from 8 mm

Large-scale pavers can be installed without further restrictions with a dry-setting thin-bed mortar with proper water and weather resistance.

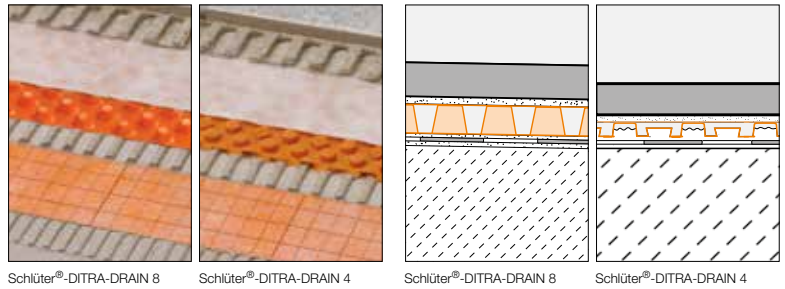


The assembly shown here only applies to cantilevered balconies and ground level terraces (with modified edge assemblies).



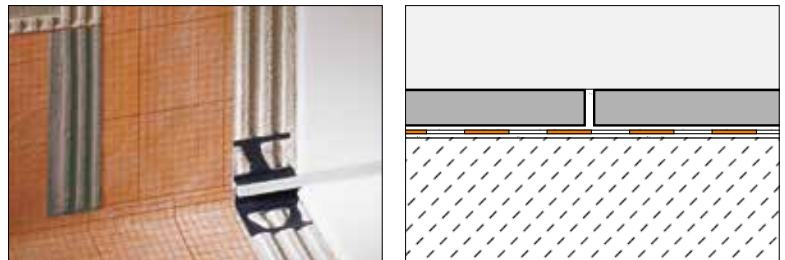
Schlüter®-DITRA-DRAIN

Schlüter®-DITRA-DRAIN is a safe and permanently effective passive capillary drainage system for floor assemblies. The material is installed over a suitable sloped waterproofing assembly such as those produced with Schlüter®-KERDI, using the thin-bed tile adhesive.



Schlüter®-KERDI

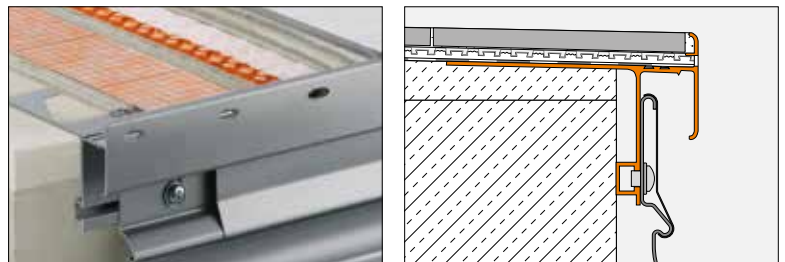
Schlüter®-KERDI is a polyethylene waterproofing membrane with fleece fabric laminated on both sides for anchoring in the tile adhesive. It is especially suitable for tiled waterproofing assemblies on floors and walls.



Schlüter®-BARA-RTKE

Schlüter®-BARA-RTKE is a finishing profile with drip lip for installation over finished sloped screeds. The profile features a T shaped profile chamber for attachment of the gutter system **Schlüter®-BARIN**. **Schlüter®-BARA-RTKE** is especially suited for assemblies with the bonded drainage mat **Schlüter®-DITRA-DRAIN**. The perforated outer edges give the exterior perimeter of tiled areas a neat appearance.

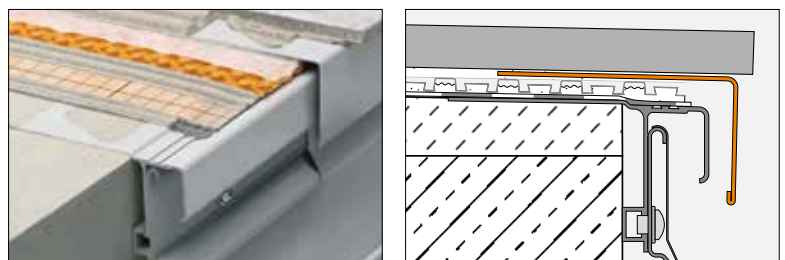
Keep drainage openings unobstructed!



Schlüter®-BARA-RW

Schlüter®-BARA-RW is a T shaped edge profile of stainless steel or colour coated aluminium for covering exposed edges of balconies and terraces.

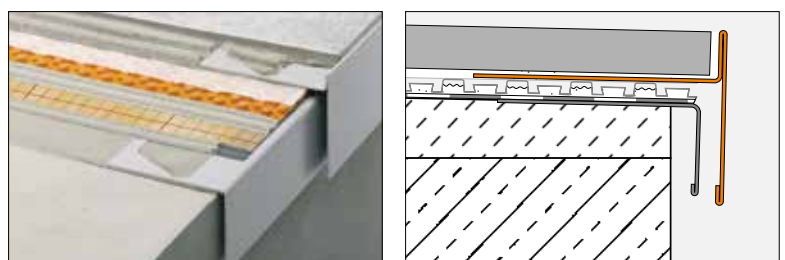
It is important to ensure a free drainage channel.



Schlüter®-BARA-RT

Schlüter®-BARA-RT is a T shaped edge profile of colour coated aluminium for covering exposed edges of balconies and terraces. The upper finishing leg covers the edge of the assembly while the lower anchoring leg forms a drip lip and conceals the joint with the bonded drainage membrane **Schlüter®-DITRA-DRAIN**.

It is important to ensure a free drainage channel.



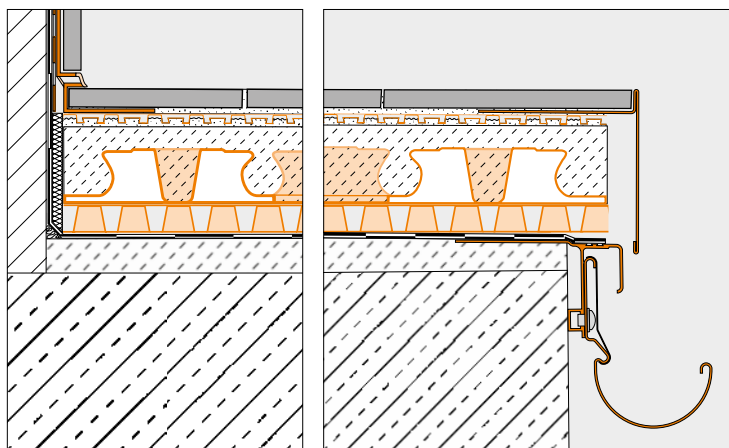


Covering assemblies with Schlüter®-TROBA-PLUS, Schlüter®-BEKOTEC-DRAIN and Schlüter®-DITRA-DRAIN

Waterproofing – Thin load distribution layer – Bonded drainage – Uncoupling

The sloped support structure is protected against permeating water with a waterproofing assembly that meets the requirements of DIN 18195. **Schlüter®-TROBA-PLUS** is installed as a drainage membrane between the waterproofing layer and the load distribution layer (screed) to drain away seepage water. This load distribution layer is installed as a thin layer, using the **Schlüter®-BEKOTEC-DRAIN** system. The passive capillary bonded drainage membrane **Schlüter®-DITRA-DRAIN** is installed in the thin-bed tile adhesive between the screed and the tile covering. This results in the broad ventilation of the top covering, which in turn promotes the quick and even drying/curing of the thin-bed tile adhesive. Due to the uncoupling function of Schlüter®-DITRA-DRAIN, any stresses occurring in the substrate are effectively neutralised.

- ① **Cantilevered concrete slab.**
- ①a **Sloped screed/sloped substrate assemblies.**
The construction must be sufficiently sloped (1.5 - 2%) to allow for proper drainage. For alternative substrate assemblies, please contact us for advice.
- ② **Schlüter®-BARA-RTK**
Edge profile with drip lip and attachment mechanism for the Schlüter®-BARIN gutter system.
- ③ **Waterproofing assembly according to DIN 18195.**
- ④ **Schlüter®-TROBA-PLUS.**
Passive capillary area drainage for the effective drainage of seepage and ventilation.
- ⑤ **Schlüter®-BEKOTEC-DRAIN.**
Thin load distribution layer as a system for crack free and functionally safe floating screeds (cement screed CT-C25-F4 or pervious screed).
- ⑥a **Schlüter®-DITRA-DRAIN 4**
Polyethylene drainage mat installed with the thin-set method, for bonded drainage, subaeration and bonded uncoupling.
- ⑥b **Schlüter®-DITRA-DRAIN 8**
Special bonded drainage membrane for large areas and staircase assemblies.
- ⑦ **Schlüter®-KERDI-KEBA.**
Polyethylene sealing band with laminated fleece on both sides for anchoring in the sealing adhesive Schlüter®-KERDI-COLL-L, designed to create waterproof wall transitions, joints and connections.
- ⑧ **Schlüter®-DILEX-EKE or Schlüter®-DILEX-EF.**
Single piece corner profile for flexible floor/wall transitions in balconies.
(terrace assemblies: use Schlüter®-DILEX-EK or Schlüter®-DILEX-RF).
- ⑨ **Schlüter®-RONDEC, Schlüter®-JOLLY or Schlüter®-QUADEC.**
Profiles for neat finishing of tiled skirtings.
Available in numerous colours and finishes.
Material: Stainless steel or aluminium
- ⑩ **Schlüter®-BARA-RT**
Edge profile with finishing leg and drip lip.
It is important to ensure a free drainage channel.
- ⑪ **Schlüter®-BARIN.**
Gutter system for draining balconies and terraces; made of colour coated aluminium with full set of matching system accessories.
- ⑫ **Ceramic/stone tiles or natural stone pavers.**
Installed (including large scale formats) with a waterproof and weather resistant dry set tile adhesive.



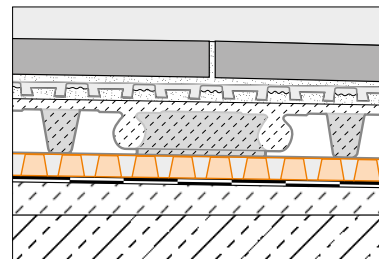
The assembly shown here only applies to cantilevered balconies and ground level terraces (with modified edge assemblies). Roof terrace assemblies must comply with all technical standards for insulation and waterproofing as specified in DIN 18195.



Schlüter®-TROBA-PLUS

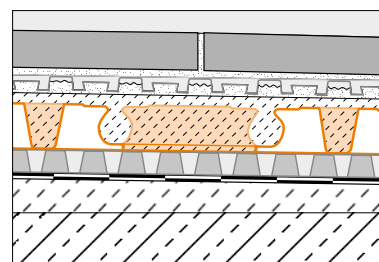
Schlüter®-TROBA-PLUS is a permanently effective capillary area drainage that safely drains away water. The closely positioned, cone shaped studs are highly durable and are covered by a water permeable fleece webbing. The studded mat supports the entire surface assembly, creating a continuous drainage space.

It is important to ensure a free drainage channel.



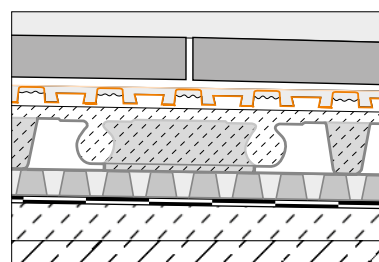
Schlüter®-BEKOTEC-DRAIN

Schlüter®-BEKOTEC-DRAIN is a safe and especially thin cover assembly system for damage free and functionally safe floating screeds in exterior areas with ceramic or natural stone coverings.



Schlüter®-DITRA-DRAIN

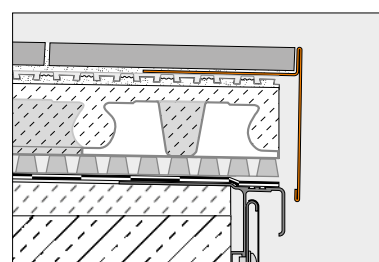
Schlüter®-DITRA-DRAIN is a safe and permanently effective passive capillary drainage system for floor assemblies. The material is installed over a suitable sloped waterproofing assembly such as those produced with Schlüter®-KERDI, using the thin-bed method.



Schlüter®-BARA-RT

Schlüter®-BARA-RT is a T shaped edge profile of colour coated aluminium for covering exposed edges of balconies and terraces. The top leg covers the edge of the assembly while the lower anchoring leg forms a drip lip and conceals the joint with the Schlüter®-TROBA-PLUS area drainage if necessary.

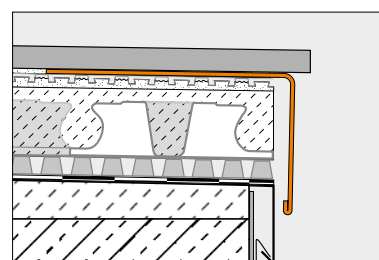
It is important to ensure a free drainage channel.



Schlüter®-BARA-RW

Schlüter®-BARA-RW is a T shaped edge profile of stainless steel or colour coated aluminium for covering exposed edges of balconies and terraces.

It is important to ensure a free drainage channel.





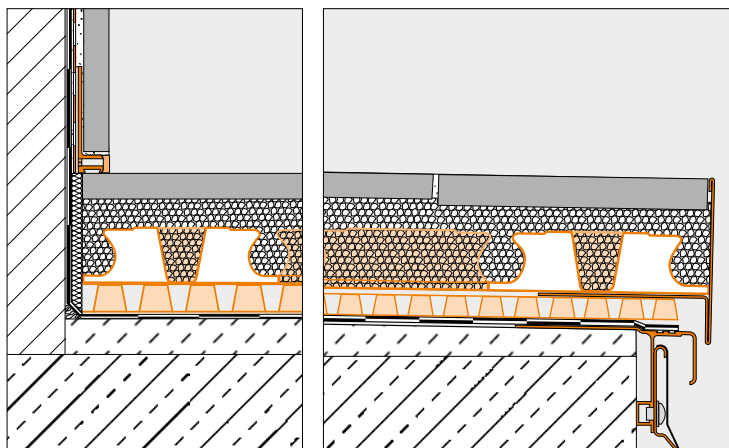
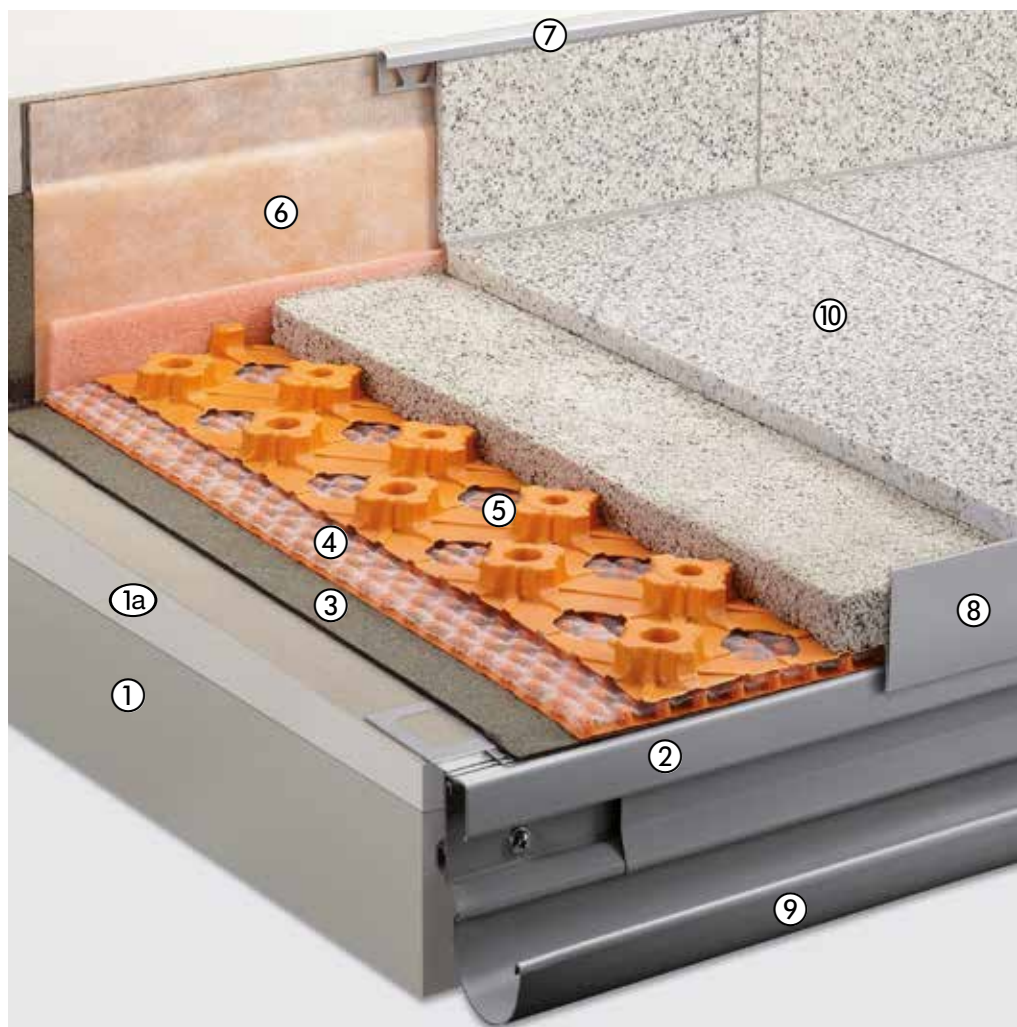
Covering assemblies with Schlüter®-TROBA-PLUS 8G and Schlüter®-BEKOTEC-DRAIN

Waterproofing – Area drainage – Thin covering assemblies – Pervious mortar

The sloped support structure is protected against permeating water with a waterproofing assembly that meets the requirements of DIN 18195.

Schlüter®-TROBA-PLUS 8G is installed as a drainage membrane between the waterproofing layer and the load distribution layer (screed) to drain away seepage water. This load distribution layer of pervious mortar is installed as a thin layer, using the **Schlüter®-BEKOTEC-DRAIN** system. The tile covering is embedded in the fresh tile adhesive.

- ① **Cantilevered concrete slab.**
- ①a **Sloped screed.**
The construction must be sufficiently sloped (1.5 - 2%) to allow for proper drainage. For alternative substrate assemblies, please contact us for advice.
- ② **Schlüter®-BARA-RTK**
Edge profile with drip lip and attachment mechanism for the Schlüter®-BARIN gutter system.
- ③ **Waterproofing assembly according to DIN 18195.**
- ④ **Schlüter®-TROBA-PLUS 8G.**
Passive capillary area drainage with fleece webbing for the effective drainage of seepage and full area ventilation.
- ⑤ **Schlüter®-BEKOTEC-DRAIN.**
Thin mortar layer, installed as a system for damage free and functionally secure tile and natural stone coverings, directly applied in the fresh mortar bed with a contact layer of cement mortar or pervious mortar, with high water permeability.
- ⑥ **Schlüter®-KERDI-KEBA.**
Polyethylene sealing band with laminated fleece on both sides for anchoring in the sealing adhesive Schlüter®-KERDI-COLL-L, designed to create waterproof wall transitions, joints and connections.
- ⑦ **Schlüter®-RONDEC, Schlüter®-JOLLY or Schlüter®-QUADEC.**
Profiles for neat finishing of tiled skirtings. Available in numerous colours and finishes. Material: Stainless steel or aluminium.
- ⑧ **Schlüter®-BARA-RT.**
Edge profile with finishing leg and drip lip.
It is important to ensure a free drainage channel.
- ⑨ **Schlüter®-BARIN.**
Gutter system for draining balconies and terraces; made of colour coated aluminium with full set of matching system accessories.
- ⑩ **Ceramic tiles or natural stone pavers.**
Direct installation in the fresh load distribution layer.

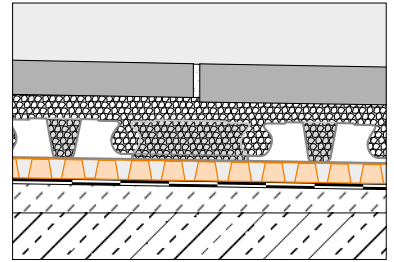


The assembly shown here only applies to cantilevered balconies and ground level terraces (with modified edge assemblies). Roof terrace assemblies must comply with all technical standards for insulation and waterproofing as specified in DIN 18195.



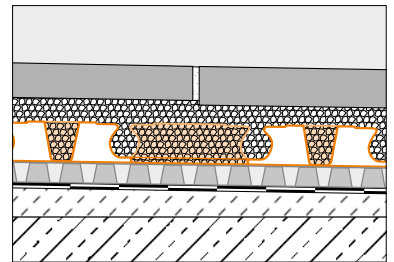
Schlüter®-TROBA-PLUS 8G

Schlüter®-TROBA-PLUS-G is a permanently effective capillary area drainage mat that safely drains away water. The closely positioned, cone shaped studs are highly durable and are covered by a water permeable fleece webbing. The studded mat supports the entire surface assembly, creating a continuous drainage space. Schlüter®-TROBA-PLUS 8G is especially suitable for combination with drainage screeds.



Schlüter®-BEKOTEC-DRAIN

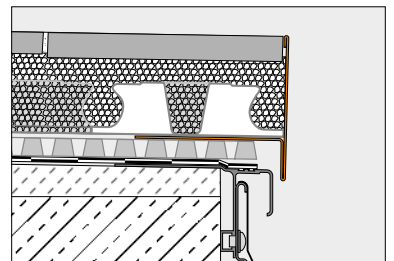
Schlüter®-BEKOTEC-DRAIN is a safe and especially thin cover assembly system for damage free and functionally safe floating screeds in exterior areas with ceramic or natural stone coverings.



Schlüter®-BARA-RT

Schlüter®-BARA-RT is a T shaped edge profile of colour coated aluminium for covering exposed edges of balconies and terraces. The top leg covers the edge of the assembly while the lower anchoring leg forms a drip lip and conceals the joint with the Schlüter®-TROBA-PLUS 8G area drainage mat if necessary.

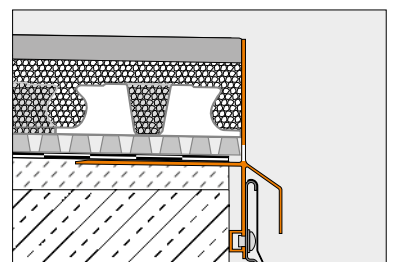
It is important to ensure a free drainage channel.



Schlüter®-BARA-RKLT

Schlüter®-BARA-RKLT is an edge profile made of colour coated aluminium with drainage openings. It is also suitable for use with large format pavers. Schlüter®-BARA-RKLT features a T shaped profile chamber for attachment of the gutter system Schlüter®-BARIN.

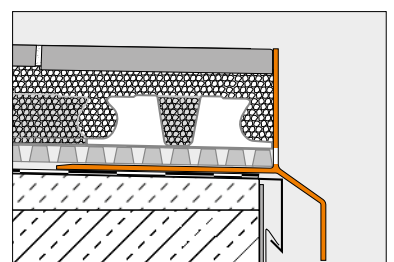
Keep drainage openings unobstructed!



Schlüter®-BARA-RKL

Schlüter®-BARA-RKL is an angled edge profile made of colour coated aluminium with drainage openings. It is especially suited for large format pavers, which are either installed loosely over gravel/crushed stone or on stilted constructions.

Keep drainage openings unobstructed!





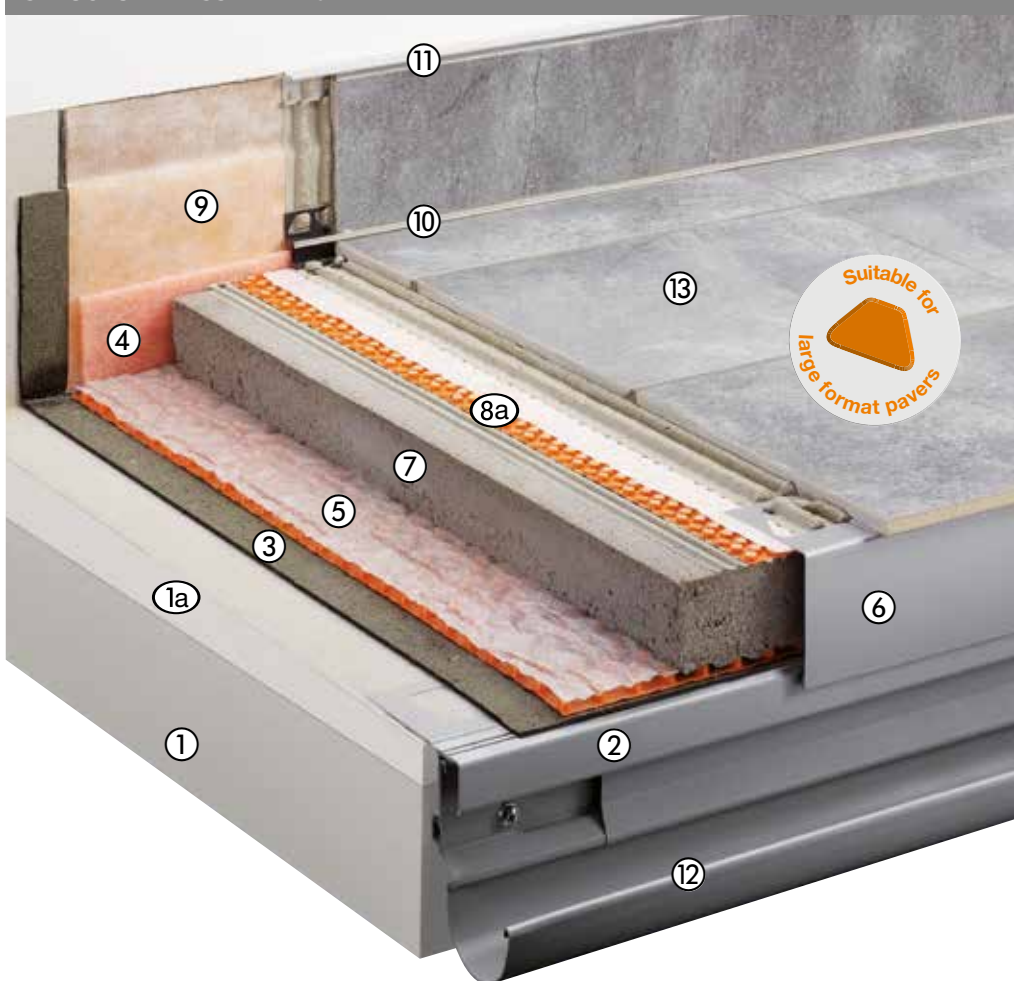
Covering assemblies with Schlüter®-TROBA-PLUS and Schlüter®-DITRA-DRAIN

Waterproofing – Drainage – Load distribution layer – Bonded drainage – Uncoupling

The sloped support structure is protected against permeating water with a waterproofing assembly that meets the requirements of DIN 18195. **Schlüter®-TROBA-PLUS** is installed as a drainage membrane between the waterproofing layer and the load distribution layer (screed) to drain away seepage water. The uncoupling function of the **Schlüter®-DITRA-DRAIN** membrane, which is installed over the screed, effectively neutralises stresses caused by the difference in the rate of thermal expansion between the tiles/natural stones and the screed due to temperature fluctuations.

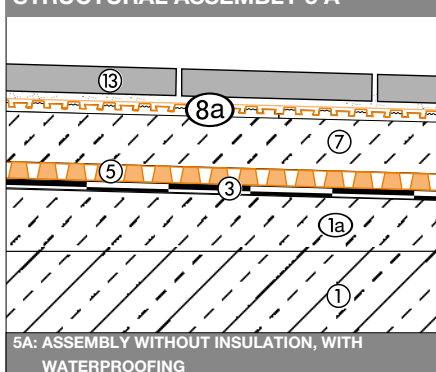
- ① **Cantilevered concrete slab.**
- ①a **Sloped screed.**
The construction must be sufficiently sloped (1.5 - 2%) to allow for proper drainage. For alternative substrate assemblies, please contact us for advice.
- ② **Schlüter®-BARA-RTK.**
Edge profile with drip lip and attachment mechanism for the Schlüter®-BARIN gutter system.
- ③ **Waterproofing assembly according to DIN 18195.**
- ④ **Edge insulation strip.**
- ⑤ **Schlüter®-TROBA-PLUS.**
Drainage membrane for permanently effective drainage of seepage water.
- ⑥ **Schlüter®-BARA-RW.**
Angled finishing profile.
- ⑦ **Load distribution layer (screed).**
- ⑧a **Schlüter®-DITRA-DRAIN 4**
Polyethylene drainage mat installed with the thin-set method, for bonded drainage, ventilation and bonded uncoupling.
- ⑧b **Schlüter®-DITRA-DRAIN 8**
Special bonded drainage membrane for large areas and staircase assemblies.
- ⑨ **Schlüter®-KERDI-KEBA.**
Polyethylene sealing band with laminated fleece on both sides for anchoring in the sealing adhesive Schlüter®-KERDI-COLL-L, designed to create waterproof wall transitions, joints and connections.
- ⑩ **Schlüter®-DILEX-EKE or Schlüter®-DILEX-EF.**
Single piece corner profile for flexible floor/wall transitions in balconies.
(Terrace assemblies: use Schlüter®-DILEX-EK).
- ⑪ **Schlüter®-RONDEC, Schlüter®-JOLLY or Schlüter®-QUADEC.**
Profiles for neat finishing of tiled skirtings.
Available in numerous colours and finishes.
Material: Stainless steel or aluminium.
- ⑫ **Schlüter®-BARIN.**
Gutter system for draining balconies and terraces; made of colour coated aluminium with full set of matching system accessories.
- ⑬ **Ceramic tiles or natural stone pavers.**
Installed (including large formats) with a waterproof and weather resistant dry set adhesive.
- ⑭ **Vapour barrier according to DIN 18195.**
- ⑮ **Insulation.**

STRUCTURAL ASSEMBLY 5 A



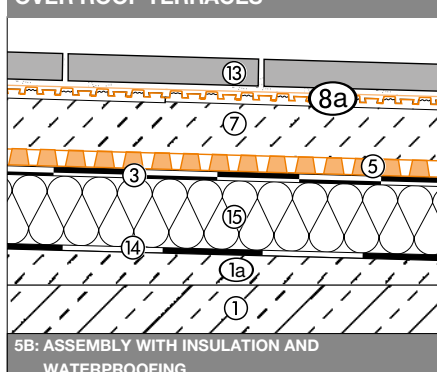
5 A: ASSEMBLY WITHOUT INSULATION, WITH WATERPROOFING

STRUCTURAL ASSEMBLY 5 A



5A: ASSEMBLY WITHOUT INSULATION, WITH WATERPROOFING

STRUCTURAL ASSEMBLY 5 OVER ROOF TERRACES

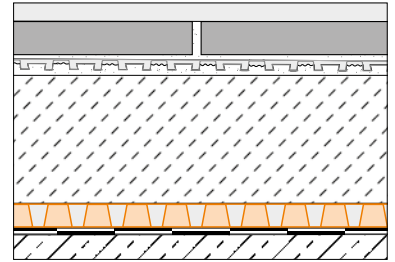


5B: ASSEMBLY WITH INSULATION AND WATERPROOFING



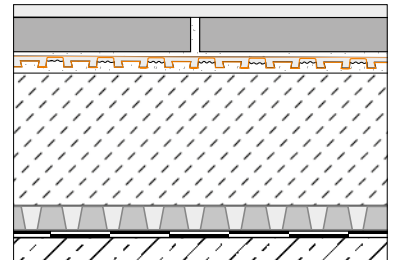
Schlüter®-TROBA-PLUS

Schlüter®-TROBA-PLUS is a permanently effective capillary area drainage mat that safely drains away water. The closely positioned, cone shaped studs are highly durable and are covered by a water permeable fleece webbing. The studded mat supports the entire surface assembly, creating a continuous drainage space. *It is important to ensure a free drainage channel.*



Schlüter®-DITRA-DRAIN

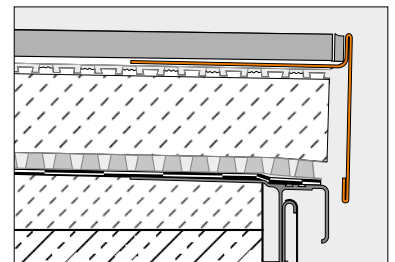
Schlüter®-DITRA-DRAIN is a safe and permanently effective passive capillary drainage system for floor assemblies. The material is installed using the thin-bed method over a suitable sloped waterproofing assembly, such as those produced with Schlüter®-KERDI.



Schlüter®-BARA-RT

Schlüter®-BARA-RT is a T shaped edge profile of colour coated aluminium for covering exposed edges of balconies and terraces. The top leg covers the edge of the assembly while the lower anchoring leg forms a drip lip and conceals the joint with the Schlüter®-TROBA-PLUS area drainage mat if necessary.

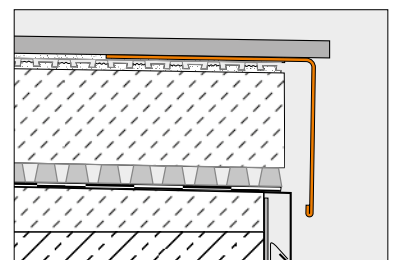
It is important to ensure a free drainage channel.



Schlüter®-BARA-RW

Schlüter®-BARA-RW is a T shaped edge profile of stainless steel or colour coated aluminium for covering exposed edges of balconies and terraces.

It is important to ensure a free drainage channel.



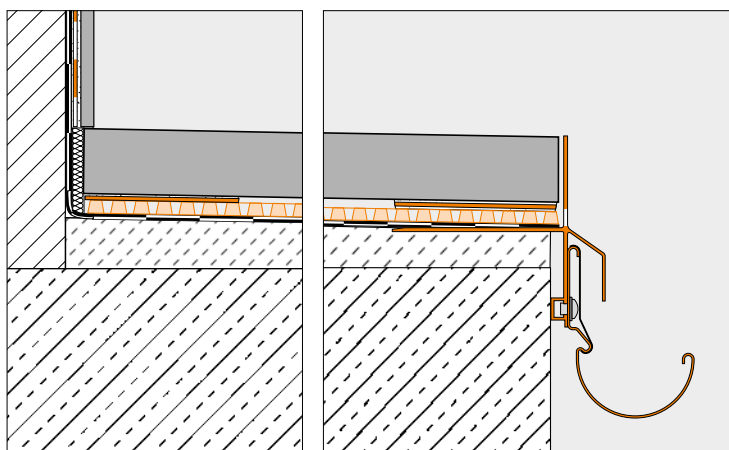
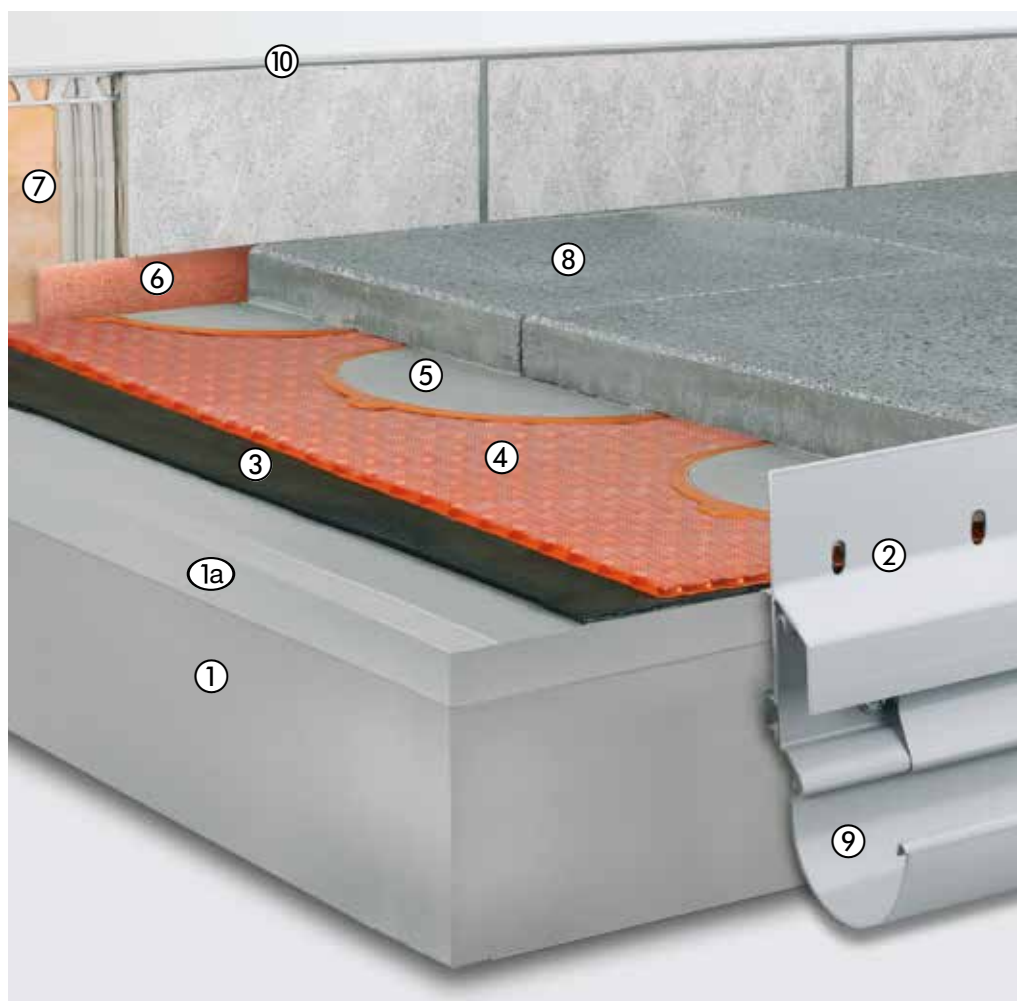


Loose installation over Schlüter®-TROBA-PLUS 8G using Schlüter®-TROBA-STELZ-DR

Waterproofing – Area drainage – Thin-bed mortar points

The sloped support structure is protected against permeating water with a waterproofing assembly that meets the requirements of DIN 18195, or alternatively with **Schlüter®-KERDI**. The high impact area drainage mat **Schlüter®-TROBA-PLUS 8G** is installed over the waterproofing layer for draining away seepage water and as a support layer for self supporting pavers. Schlüter®-TROBA-PLUS 8G also forms the separating and protective layer of the waterproofing assembly. The pavers are installed at the intersections of joints (and additionally in the area of the paver centre, depending on expected loads) over defined support points of thin-bed mortar, which are constructed with the reusable casting mould rings **Schlüter®-TROBA-STELZ-DR**.

- ① **Cantilevered concrete slab.**
- ①a **Sloped screed.**
The construction must be sufficiently sloped (1.5 - 2%) to allow for proper drainage.
- ② **Schlüter®-BARA-RKLT.**
Angled finishing profile with drainage openings for loosely installed pavers.
Keep drainage openings unobstructed!
- ③ **Waterproofing assembly according to DIN 18195.**
Alternative:
Waterproofing with **Schlüter®-KERDI**.
- ④ **Schlüter®-TROBA-PLUS 8G.**
Drainage membrane for permanently effective drainage of seepage water with concurrent protection of the waterproofing layer.
- ⑤ **Schlüter®-TROBA-STELZ-DR.**
Casting mould rings for thin-bed mortar on Schlüter®-TROBA-PLUS 8G.
May be left in the assembly or reused.
- ⑥ **Edge insulation strip.**
- ⑦ **Schlüter®-KERDI-KEBA.**
Polyethylene sealing band with laminated fleece on both sides for anchoring in the sealing adhesive Schlüter®-KERDI-COLL-L, designed to create waterproof wall transitions, joints and connections.
- ⑧ **Large format, self supporting pavers.**
Pavers made of concrete, natural stone or ceramic tile.
- ⑨ **Schlüter®-BARIN.**
Gutter system for draining balconies and terraces; made of colour coated aluminium with full set of matching system accessories.
- ⑩ **Schlüter®-RONDEC, Schlüter®-JOLLY or Schlüter®-QUADEC.**
Profiles for neat finishing of tiled skirtings.
Available in numerous colours and finishes.
Material: Stainless steel or aluminium.

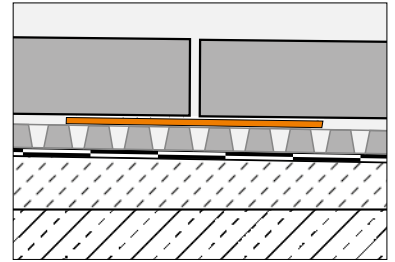


The assembly shown here only applies to cantilevered balconies and ground level terraces (with modified edge assemblies). Roof terrace assemblies must comply with all technical standards for insulation and waterproofing as specified in DIN 18195.



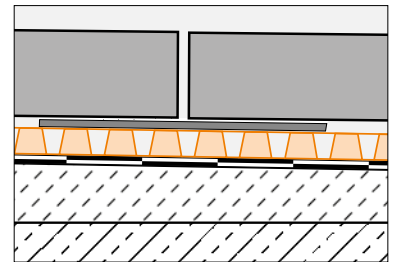
Schlüter®-TROBA-STELZ-DR

Schlüter®-TROBA-STELZ-DR are casting mould rings for thin-bed mortar on Schlüter®-TROBA-PLUS 8G. Once the thin-bed mortar is installed, the rings may be either left in the structure or removed for another use.



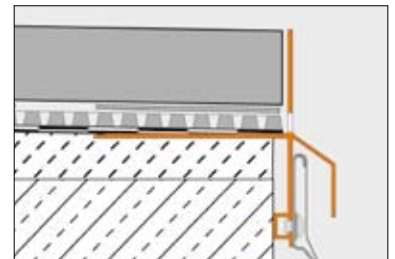
Schlüter®-TROBA-PLUS 8G

Schlüter®-TROBA-PLUS 8G is a permanently effective capillary area drainage that safely drains away water. The closely positioned, cone shaped studs are highly durable and are covered by a water permeable fleece webbing. The studded mat supports the entire surface assembly, creating a continuous drainage space.



Schlüter®-BARA-RKL/RKLT

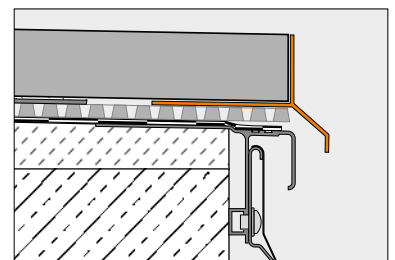
Schlüter®-BARA-RKL and **-RKLT** are edge profiles made from colour-coated aluminium with drainage holes. They are suitable for large-format pavers, which are either installed loosely over gravel/crushed stone or on stilted constructions. BARA-RKL 35 and 40 are specifically designed for paver elements with a thickness of 2 cm. Schlüter®-BARA-RKLT features a T shaped profile chamber for attachment of the gutter system Schlüter®-BARIN. *Keep drainage openings unobstructed!*



Schlüter®-BARA-RK

Schlüter®-BARA-RK is a T shaped finishing profile. The anchoring leg features a protruding drip lip, which covers the joint with the Schlüter®-TROBA-PLUS 8G area drainage mat.

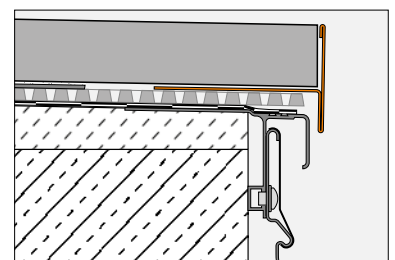
It is important to ensure a free drainage channel.



Schlüter®-BARA-RT

Schlüter®-BARA-RT is a T shaped edge profile of colour coated aluminium for covering the exposed edges of balconies and terraces. The top leg covers the edge of the assembly while the lower anchoring leg forms a drip lip and hides the joint with the Schlüter®-TROBA-PLUS 8G area drainage mat if necessary.

It is important to ensure a free drainage channel.





Loose installation on Schlüter®-TROBA-STELZ casting mould rings

Waterproofing – Area drainage – Mortar casting mould rings

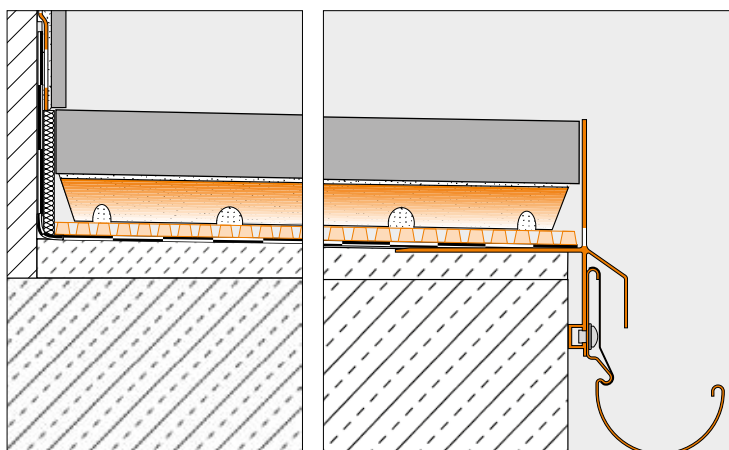
The sloped support structure is protected against permeating water with a waterproofing assembly that meets the requirements of DIN 18195.

Schlüter®-TROBA-PLUS 8G is installed over the waterproofing layer. **Schlüter®-TROBA-STELZ-MR** are plastic casting mould rings that are used as installation aids for large format pavers on balconies and terraces. The 25 mm plastic casting mould rings are filled with mortar at the intersection points of the paver joints and pavers are installed over them.

- ① **Cantilevered concrete slab.**
- ①a **Sloped screed.**
The construction must be sufficiently sloped (1.5 - 2%) to allow for proper drainage.
- ② **Schlüter®-BARA-RKLT.**
Angled finishing profile with drainage openings for loosely installed pavers.
Keep drainage openings unobstructed!
- ③ **Waterproofing assembly according to DIN 18195.**
- ④ **Schlüter®-TROBA-PLUS 8G.**
Drainage membrane for permanently effective drainage of seepage water with concurrent protection of the waterproofing layer.
- ⑤ **Schlüter®-TROBA-STELZ-MR.**
Polyethylene casting mould ring to be filled with fresh mortar (preferably single grain mortar).
- ⑥ **Edge insulation strip.**
- ⑦ **Schlüter®-KERDI-KEBA.**
Polyethylene sealing band with laminated fleece on both sides for anchoring in the sealing adhesive Schlüter®-KERDI-COLL-L, designed to create waterproof wall transitions, joints and connections.
- ⑧ **Large format, self supporting pavers.**
Pavers made of concrete, natural stone or ceramic tile.
- ⑨ **Schlüter®-BARIN.**
Gutter system for draining balconies and terraces; made of colour coated aluminium with full set of matching system accessories.
- ⑩ **Schlüter®-RONDEC, Schlüter®-JOLLY or Schlüter®-QUADEC.**
Profiles for neat finishing of tiled skirtings.
Available in numerous colours and finishes.
Material: Stainless steel or aluminium.



The assembly shown here only applies to cantilevered balconies and ground level terraces (with modified edge assemblies). Roof terrace assemblies must comply with all technical standards for insulation and waterproofing as specified in DIN 18195.

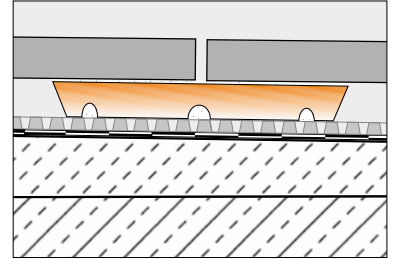




Schlüter®-TROBA-STELZ

Schlüter®-TROBA-STELZ-MR are casting mould rings that create mortar stilts for the installation of large format pavers on balconies and terraces. The material does not rot, is physiologically harmless and may be used with bitumen.

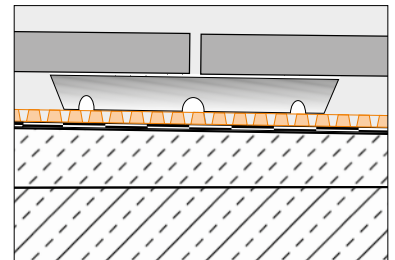
Schlüter®-TROBA-STELZ rings can be combined telescopically, allowing for easy height alignment of the covering, regardless of the existing slope of the substructure.



Schlüter®-TROBA-PLUS 8G

Schlüter®-TROBA-PLUS 8G is a permanently effective capillary area drainage that safely drains away water. The closely positioned cone shaped studs are highly durable and are covered by a water permeable fleece webbing. The studded mat supports the entire surface assembly, creating a continuous drainage space.

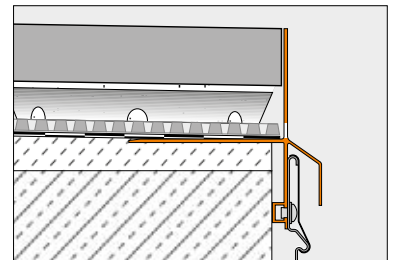
It is important to ensure a free drainage channel.



Schlüter®-BARA-RKLT

Schlüter®-BARA-RKLT is an edge profile made of colour coated aluminium with drainage openings. It is especially suited for large format pavers, which are either installed loosely over gravel/crushed stone or on stilted constructions. Schlüter®-BARA-RKLT features a T shaped profile chamber for attachment of the gutter system Schlüter®-BARIN.

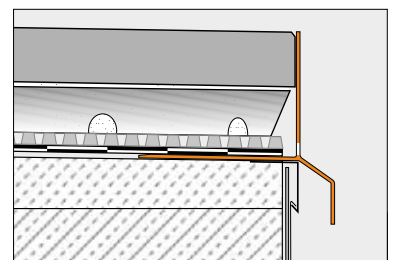
Keep drainage openings unobstructed!



Schlüter®-BARA-RKL

Schlüter®-BARA-RKL is an edge profile made of colour coated aluminium with drainage openings. It is especially suited as an edge profile for balcony and terrace coverings made of large format pavers, which are either installed loosely over gravel/crushed stone or on stilted constructions.

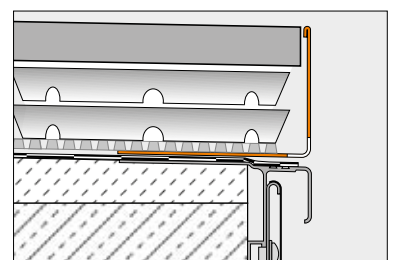
Keep drainage openings unobstructed!



Schlüter®-BARA-RWL

Schlüter®-BARA-RWL is an angled edge profile made of coated aluminium with drainage openings. It is especially suited as an edge profile for balcony and terrace coverings made of large format pavers, which are either installed loosely over gravel/crushed stone or on stilted constructions.

Keep drainage openings unobstructed!



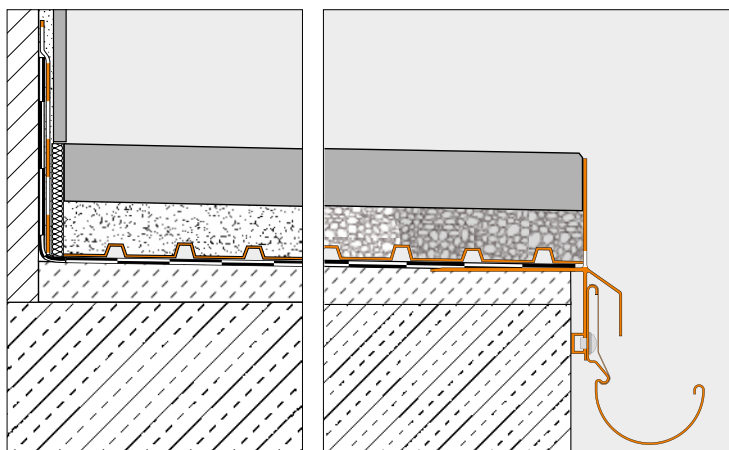


Loose installation on Schlüter®-TROBA in gravel/crushed stone beds

Waterproofing – Area drainage – Gravel/crushed stone

The sloped support structure is protected against permeating water with a waterproofing assembly that meets the requirements of DIN 18195. **Schlüter®-TROBA** is installed between the waterproofing layer and the gravel or crushed stone as a protective separating layer. It protects the waterproofing layer from mechanical impact and prevents impressions from gravel or crushed stone pieces. Thanks to the drainage function, seepage is removed quickly and reliably to prevent the formation of “ice concrete.”

- ① **Cantilevered concrete slab.**
- ①a **Sloped screed.**
The construction must be sufficiently sloped (1.5 - 2%) to allow for proper drainage.
- ② **Schlüter®-BARA-RKLT.**
Angled finishing profile with drainage openings for loosely installed pavers.
Keep drainage openings unobstructed!
- ③ **Waterproofing assembly according to DIN 18195.**
Alternative: Waterproofing with **Schlüter®-KERDI.**
- ④ **Schlüter®-TROBA.**
Drainage membrane for permanently effective drainage of seepage water with concurrent protection of the waterproofing layer.
- ⑤ **Gravel or crushed stone bed.**
(With contained edges).
- ⑥ **Edge insulation strip.**
- ⑦ **Schlüter®-KERDI-KEBA.**
Polyethylene sealing band with laminated fleece on both sides for anchoring in the sealing adhesive Schlüter®-KERDI-COLL-L, designed to create waterproof wall transitions, joints and connections.
- ⑧ **Large format, self supporting pavers.**
Pavers made of concrete, natural stone or ceramic tile.
- ⑨ **Schlüter®-BARIN.**
Gutter system for draining balconies and terraces; made of colour coated aluminium with full set of matching system accessories.
- ⑩ **Schlüter®-RONDEC, Schlüter®-JOLLY or Schlüter®-QUADEC.**
Profiles for neat finishing of tiled skirtings.
Available in numerous colours and finishes.
Material: Stainless steel or aluminium.



The assembly shown here only applies to cantilevered balconies and ground level terraces (with modified edge assemblies). Roof terrace assemblies must comply with all technical standards for insulation and waterproofing as specified in DIN 18195.



Schlüter®-TROBA/-TROBA-PLUS

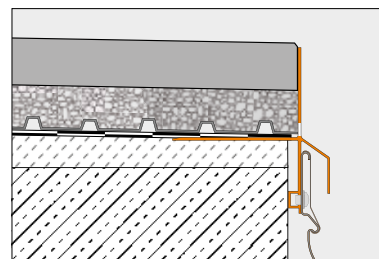
Schlüter®-TROBA [Ⓐ] and **Schlüter®-TROBA-PLUS** [Ⓑ] are safe and permanently effective area drainage membranes for installation over sloped waterproofing assemblies. Due to the drainage channels of the drainage mats, water gathering over the waterproofing layer can drain away to the designated points without pressure. The membranes also protect the waterproofing layer effectively from damage.



Schlüter®-BARA-RKLT

Schlüter®-BARA-RKLT is an edge profile made of colour coated aluminium with drainage openings. It is especially suited for large format pavers, which are either installed over a contained gravel/crushed stone layer or on stilted constructions. Schlüter®-BARA-RKLT features a T shaped profile chamber for attachment of the gutter system Schlüter®-BARIN.

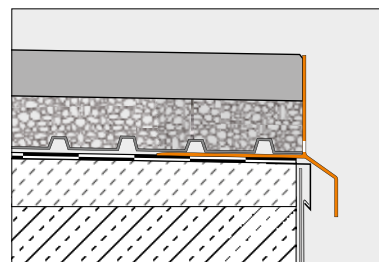
Keep drainage openings unobstructed!



Schlüter®-BARA-RKL

Schlüter®-BARA-RKL is an edge profile made of colour coated aluminium with drainage openings. It is especially suited as an edge profile for balcony and terrace coverings made of large format pavers, which are either installed over a contained gravel/crushed stone layer or on stilted constructions.

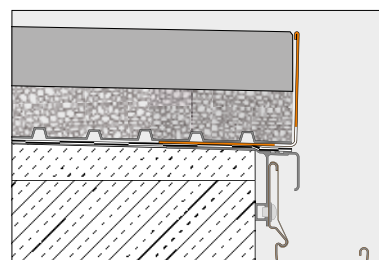
Keep drainage openings unobstructed!



Schlüter®-BARA-RWL

Schlüter®-BARA-RWL is an angled edge profile made of coated aluminium with drainage openings. It is especially suited as an edge profile for balcony and terrace coverings made of large format pavers, which are either installed over a contained gravel/crushed stone layer or on stilted constructions.

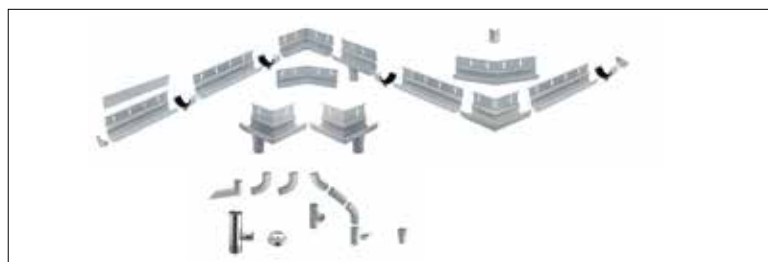
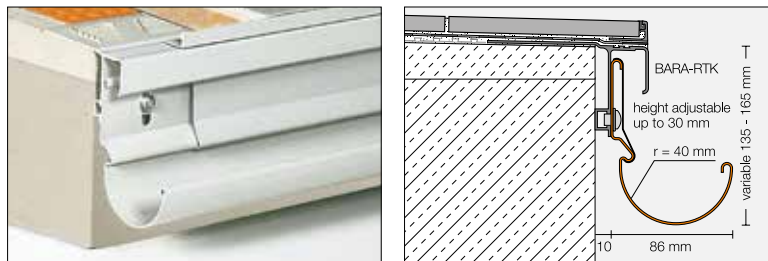
Keep drainage openings unobstructed!





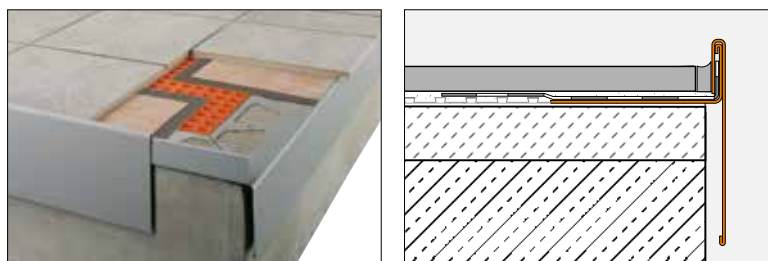
Schlüter®-BARIN

Schlüter®-BARIN is a gutter system of colour coated aluminium for the drainage of balconies and terraces. It is designed for attachment to the corresponding **Schlüter®-BARA** profiles. The down pipes **Schlüter®-BARIN-BR** are available in colour coated aluminium to match the design of the gutters.



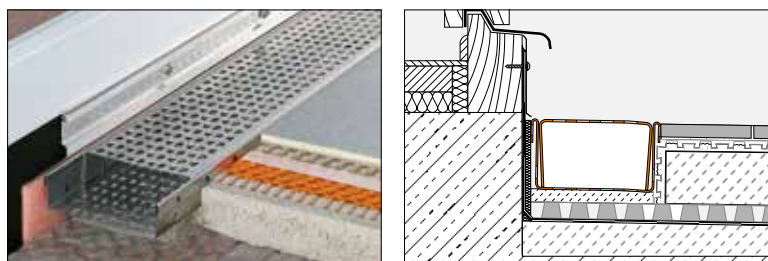
Schlüter®-BARA-RAP

Schlüter®-BARA-RAP is a cover profile made of colour coated aluminium. Together with the support profile Schlüter®-BARA-RW, it encloses the exposed (lateral) perimeter of balconies and terraces and helps prevent rain and cleaning water from running over the edges of balconies.



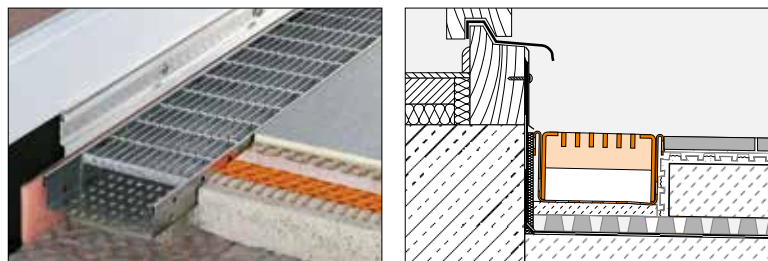
Schlüter®-TROBA-LINE-TL

Schlüter®-TROBA-LINE-TL is a stainless steel drainage channel with cover screens in 75 mm, 110 mm and 160 mm widths, which can be installed with low transition heights to door elements on balconies and terraces to prevent the accumulation of water. It can also be used as an area drainage channel.



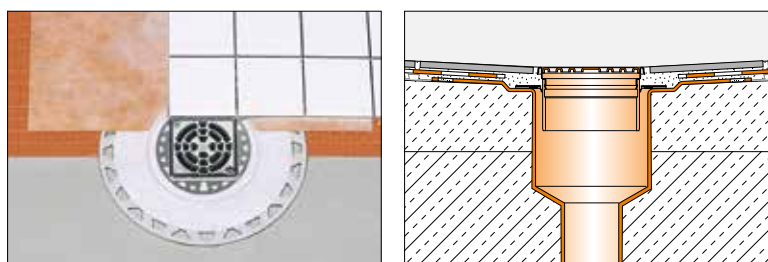
Schlüter®-TROBA-LINE-TLR

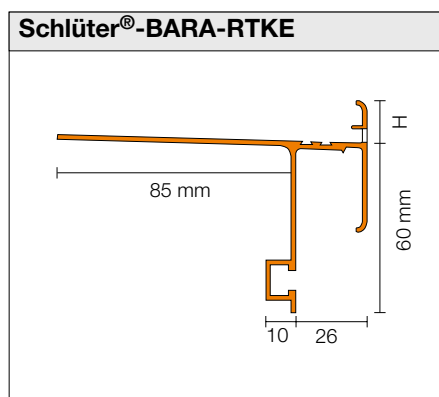
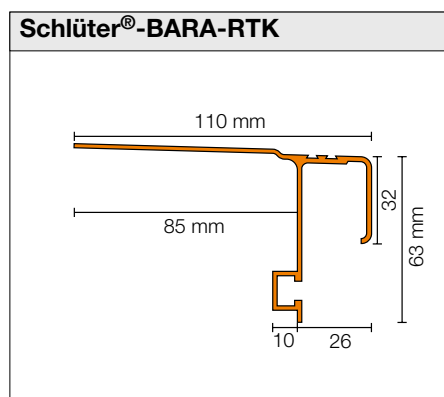
Schlüter®-TROBA-LINE-TLR is a polished stainless steel drainage channel in 110 mm and 160 mm widths, which can be installed with low transition heights to door elements on balconies and terraces to prevent the accumulation of water. It can also be used as an area drainage channel for higher traffic loads.



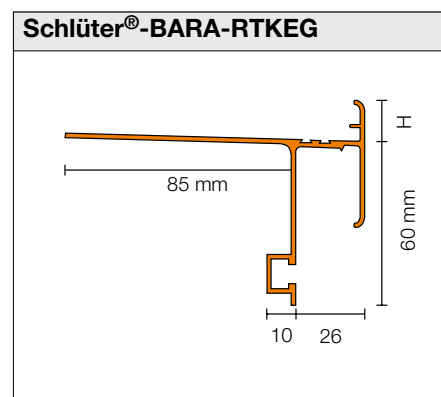
Schlüter®-KERDI-DRAIN

Schlüter®-KERDI-DRAIN is a floor drain system for reliable connections to bonded waterproofing assemblies with **Schlüter®-KERDI** or other bonded waterproofing systems.

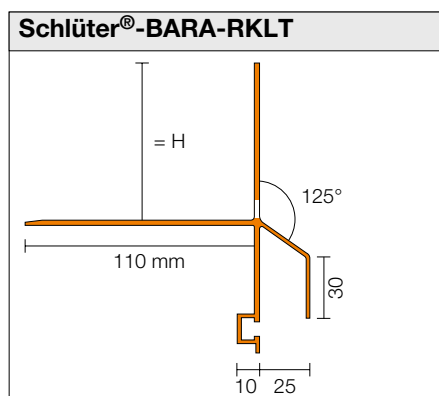
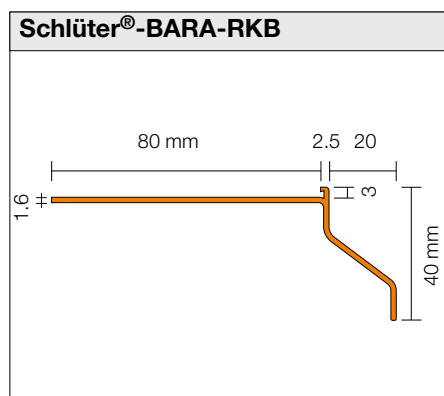
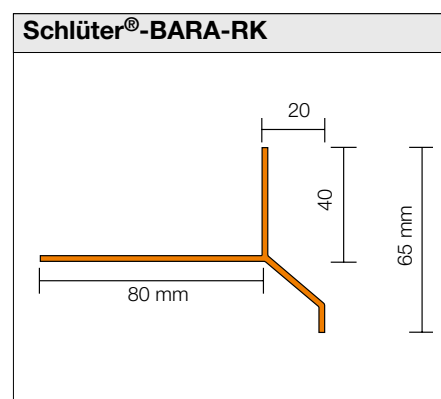
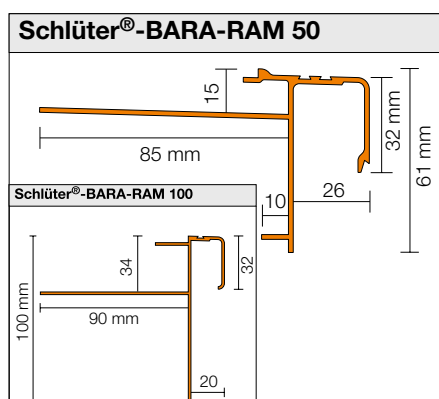
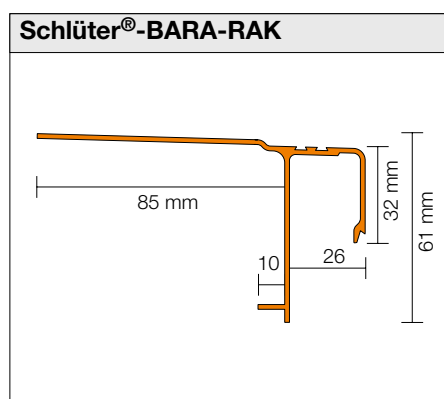




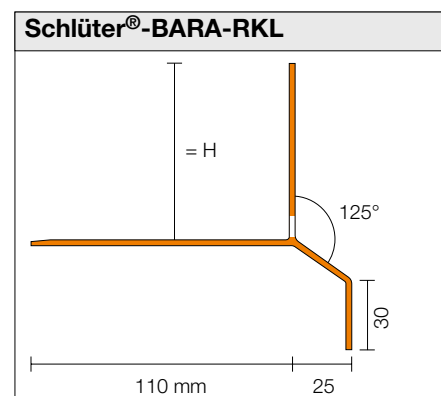
H = 10 / 15 / 18 / 21 / 23 mm



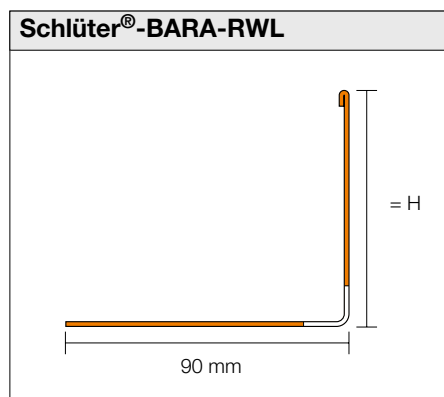
H = 4 / 10 / 15 / 18 / 21 mm



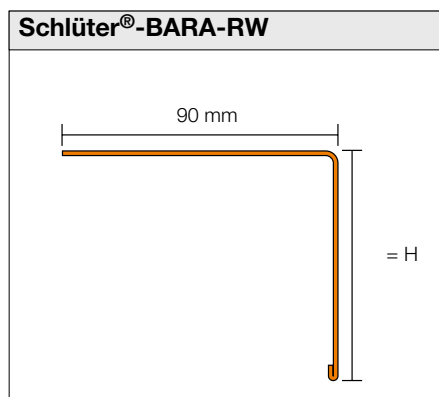
H = 30 / 40 / 50 / 75 mm



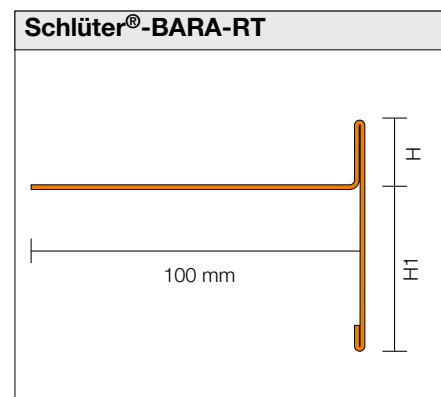
H = 30 / 35 / 40 / 50 / 75 mm



H = 15/25/30/40/55/75/95/120/150 mm



H = 15/25/30/40/55/75/95/120/150 mm



H/H1 = 9/60, 12/16, /12/65, 20/50, 25/40, 30/35 mm



i

Informative. For those who want to know more!

Did we get you interested in products of Schlüter-Systems?
Would you like to find out more? The fastest way to find out more is online.
Visit our website www.schluter.co.uk, which offers additional details at the click of a mouse.



Your authorised dealer:



PROFILE OF INNOVATION

Schlüter-Systems KG · Schmölestraße 7 · D-58640 Iserlohn

Tel.: +49 2371 971-261 · Fax: +49 2371 971-112 · info@schlueter.de · www.schlueter-systems.com

Schlüter-Systems Ltd · Units 3-5 Bardon 22 Industrial Estate · Beveridge Lane · Coalville · Leicestershire · LE67 1TE

Tel.: +44 1530 813396 · Fax: +44 1530 813376 · sales@schluter.co.uk · www.schluter.co.uk