

Schlüter®-DECO-SG

Wall corners and finishing profiles
for decorative wall design

2.16

Product data sheet

Application and function

Schlüter®-DECO-SG is a high-quality, decorative profile made of anodised aluminium for joint design in tile coverings. It forms a 12-mm wide shadow joint that allows for creating particularly appealing interior wall coverings.

Thanks to its U-shaped geometry, the profile is ideally suited for the insertion of glass elements in floor and wall areas in conjunction with floor-level showers.

In floor areas, Schlüter®-DECO-SG forms a functional and decorative solution in combination with the tapered profiles Schlüter®-SHOWERPROFILE-S.

Materials

Schlüter®-DECO-SG is available in the following material version:

AE =Anodised aluminium

Material properties and areas of application

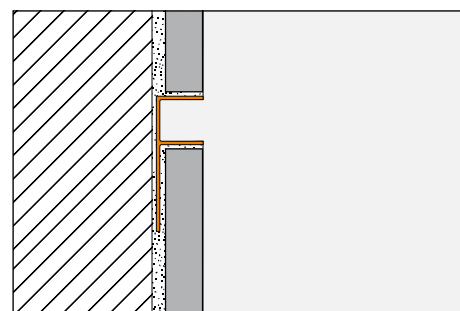
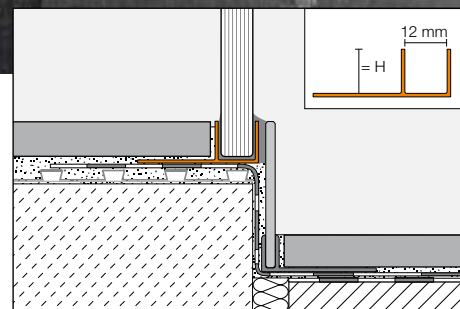
In special cases, the suitability of the material type must be verified based on the anticipated chemical, mechanical, and/or other stresses. The information provided below is intended as a general guideline.

Schlüter®-DECO-SG (anodised aluminium): The aluminium features an anodised finish that retains a uniform appearance during normal use. Visible surfaces should be protected against abrasion. Aluminium is sensitive to alkaline media. Cementitious materials, in conjunction with moisture, become alkaline. Depending on the concentration and duration



of exposure, this may result in corrosion (aluminium hydroxide formation).

For this reason, remove mortar or grouting material immediately from all visible areas and do not cover freshly installed coverings with foil. In addition, ensure that the profile is solidly embedded in the setting material to prevent water from accumulating in small cavities.





Installation in shower with glass element



Installation in skirting

Installation

1. Select Schlüter®-DECO-SG according to the tile thickness.
2. Apply tile adhesive to the area where the tile covering will end, using a notched trowel.
3. Press the trapezoid-perforated anchoring leg of Schlüter®-DECO-SG firmly into the adhesive and align it.
4. Trowel additional tile adhesive over the perforated anchoring leg to ensure full coverage.
5. Firmly press the adjoining tiles into place and align them in such a way that they are flush with the upper profile edge. The tiles must be fully embedded in the area of the profile.
6. Leave a joint of approximately 1.5 mm and completely fill the space between the tile and the profile with grout.
7. Use suitable materials and tools for the sensitive surfaces to avoid scratches or other damage. Residue of mortar and tile adhesive should be removed immediately.
8. Glass elements may be inserted into Schlüter®-DECO-SG after the final installation.

Important: The glass may not be in direct contact with the profile. Use suitable spacers and seal the joints with silicone.

Notes

Schlüter®-DECO-SG requires no special maintenance or care. Do not use abrasive cleaning agents on the sensitive surfaces. Damaged anodised surfaces can be restored with paint.

Product overview:

Schlüter®-DECO-SG

AE = Anodised aluminium

Supplied length: 2,50 m

H = mm	8	10	11	12,5
AE	•	•	•	•

Text template for tenders:

_____linear meters of Schlüter®-DECO-SG, both as a decorative shadow joint profile in tile coverings with trapezoid perforated anchoring leg or as a profile for the attachment of glass elements in floor and wall areas in conjunction with floor-level showers and in combination with the tapered profiles Schlüter®-SHOWERPROFILE-S, to be supplied and professionally installed while observing the manufacturer's instructions.

Material:

AE = Anodised aluminium

Profile height: _____ mm

Item no.: _____

Material: _____ /m

Labour: _____ /m

Total: _____ /m