

Ceiling Access Panel for mineral fibreboard tiles on exposed grid

NON FIRE RATED

INTRODUCTION

The Profab 5000 series range of hinged steel access panels provides modular access into 'lay-in' mineral fibreboard tiles on exposed grid where regular access to mechanical and electrical services is required.



LOCK OPTIONS



Budget Lock (BL)



Security Lock (SL)

DESCRIPTION

COMPOSITION & MANUFACTURE

The welded metal frame holds a metal door tray designed to accept the same selected ceiling tile as in the surrounding ceiling. The door is hinged via fully adjustable concealed hinges and is held closed by either a concealed budget lock (BL) or security key lock (SL) that opens towards the user. The door is removable to facilitate installation of the ceiling board or if future damage occurs. Panels are manufactured to suit exact tile modules, either as 600mm or as 1200mm, square or rebated (tegular) edge and 24mm or 15mm wide tee grid systems. Panels are supplied powder coated semi-gloss white all-over unless they are specified to match the tee grid colour, as is usual for panels that contain 'dummy' tee sections.

5000/E/24 or BL or SL

Frame: 1.2mm thick, factory welded, electro-galvanised mild steel with concealed frame. Manufactured to suit square edged fibreboard tiles on 24mm exposed tee grid system. Finished all-over in powder-coated semi-gloss white, unless colour is specified otherwise.

Door: 0.9mm thick, electro-galvanised mild steel door tray with removable rear section and finished all-over in powder coated semi-gloss white; fitted with concealed fully adjustable hinges and foam dust gasket to all sides.

Locks: Select from concealed budget lock (BL) or security lock (SL); all are fitted on the rear of the frame/door.

8000/R/24 BL or SL

All as above description, but to suit a rebated edge fibreboard tile.

8000/R/15 BL or SL

All as above description, but to suit a rebated edge fibreboard tile on 15mm exposed tee grid system.

SIZES & WEIGHTS

(module only, actual size is dependant on the selected tile and grid)

Dim X	Dim Y	No. of Locks	Kgs (without tile)
600	600	1	10
600	1200	2	20
1200	1200	4	40
1200	1800	4	60

All dimensions in millimetres.

All doors hinge along dimension Y.

Panels are single door up to 600 x 1200mm. Larger panels are manufactured as a double door with a removable central locking spar.

KEY POINTS TO NOTE

1. X and Y dimensions on the 5000 series is the tee grid module size. The panel is manufactured to the specified ceiling system quoted when ordering.
2. Overall frame depth is 80mm.
3. If the door needs to be painted to match the colour of tee grid selected, the colour specification should be quoted at the ordering stage, or a sample sent to Profab for matching.
4. Panels should be independently supported on threaded rod or angle. Panels 600 x 1200mm or larger should be braced to prevent any lateral movement.

FIRE PERFORMANCE



NON
FIRE RATED

The 5000 series panel is a non-fire rated product, although being manufactured from steel it is non-combustible, excluding any non-structural plastic components. For further advice on fire resistance requirements, contact Profab Technical Services Department.

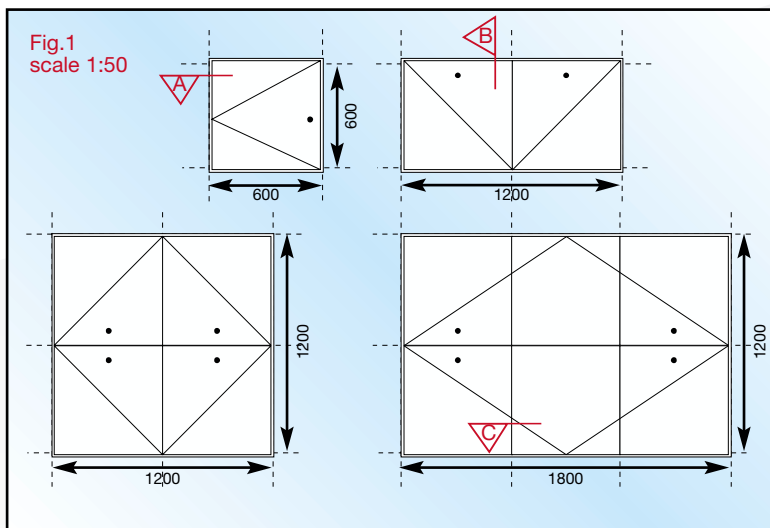


Fig.1
scale 1:2
section on A

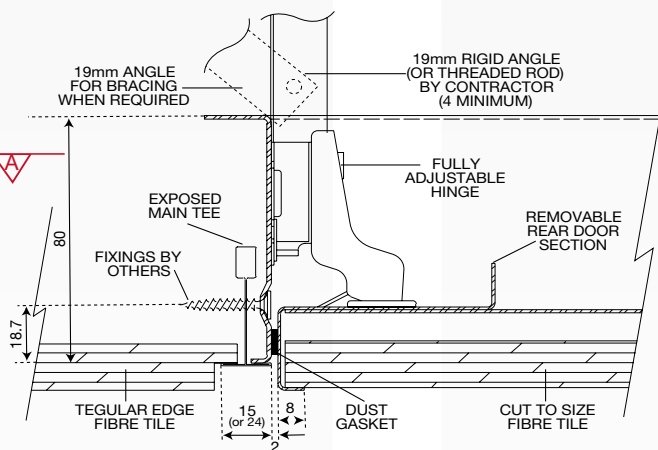


Fig.2
scale 1:2
section on B

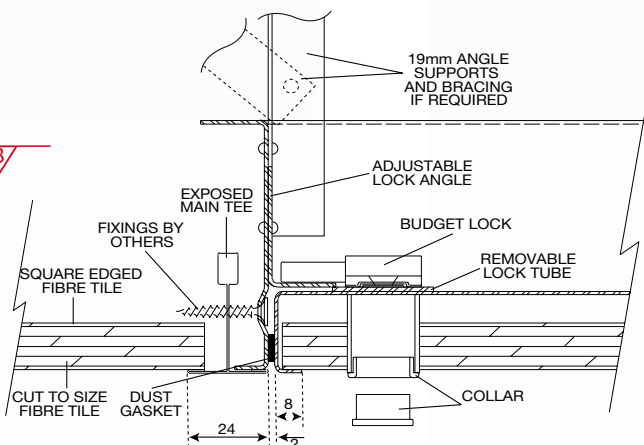
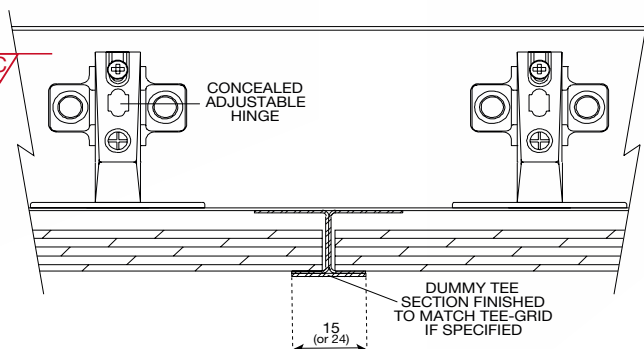


Fig.3
scale 1:2
section on C



APPLICATIONS & USES

The 5000 series panel is designed for internal use and only in areas of normal humidity. It is only suitable for horizontal use in mineral fibreboard exposed tee grid ceiling systems.

SPECIFICATIONS

EXAMPLE:

Access panel type 5000/R/15/SL Size 600 x 1200mm single door unit to suit 2 number 600 x 600mm rebated edge mineral fibreboard tiles by (tile manufacturer and tile reference) on 15mm exposed tee grid. Dummy tee grid finished (colour reference). Fitted with 2 chrome security key locks, supplied by Profab Access Limited.

OTHER OPTIONS

The 5000 series is a strong, purpose made, high quality access panel designed to provide a simple, yet secure means of accessing building services. Some minor modifications are possible with this product as Profab's manufacturing flexibility provides for alternative materials, sizes, locks and door combinations. Discussions with Profab should take place at the earliest opportunity if specification changes are being considered.

INSTALLATION

Apertures formed in suspended ceilings should be correctly formed in accordance with the system manufacturer's recommendations. The access panel should be independently supported and braced to prevent the panel's additional weight, and operating forces exerted on it during installation and operation, being transferred to the lightweight ceiling system. Typical fixing details are shown on this data sheet.

OPERATION

Operated from the front face, the budget lock (BL) utilises an 8mm square drive key (included) which has a white, round removable cap on the door face to conceal the keyhole. The security lock (SL) has an integral, visible chrome escutcheon to accept the key (included). Additional keys and caps are available from Profab.

SUPPLY

Available direct and through a network of distributors. Refer to Profab for guidance.

TECHNICAL SERVICES

ADVISORY

If there is any doubt about the information given in this data sheet or the intended product usage, then PROFAB should be consulted. We are only too pleased to advise on the use of our products. Technical representation is available at all stages of a project. In-house manufacturing enables us to offer full flexibility in product design for projects that need to meet specific design criteria.

QUALITY & DEVELOPMENT

PROFAB access panels are manufactured under strictly controlled quality systems and so we reserve the right to amend any of our published information and specifications deemed necessary as a part of our continuous product development and improvement policy, without prior notice.



5000 series

continued . . .

PLEASE CONTACT PROFAB ACCESS OR YOUR NEAREST DISTRIBUTOR FOR FURTHER INFORMATION & SALES

Distributor:

Profab Access Ltd.
Unit 45-48 Fourways, Carlyon
Road Industrial Estate,
Atherstone, Warwickshire
CV9 1LG
UK

Tel: 01827 718222
Fax: 01827 721092
sales@profabaccess.com
www.profabaccess.com

