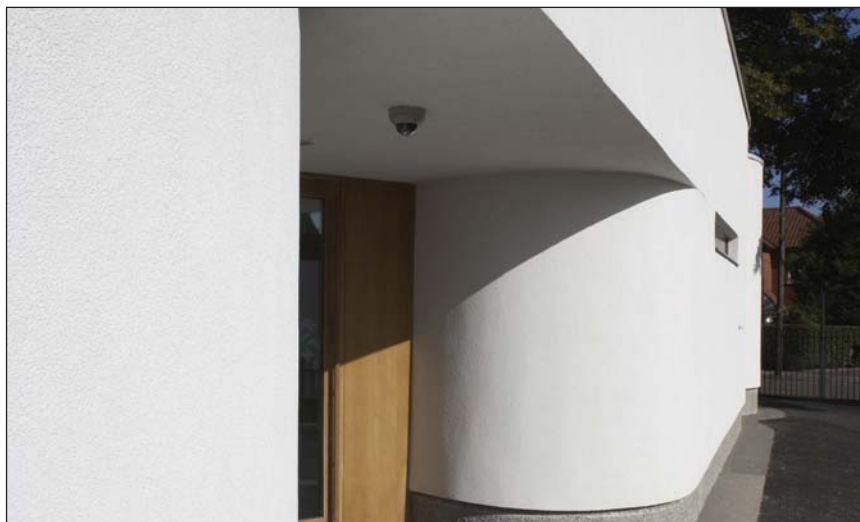


Polymer-modified, through coloured, decorative finish

webermineral TF



About this product

webermineral TF is a polymer-modified, through coloured mineral render for use as a decorative finish.

Technical data

- As a decorative textured finish for application onto either a single coat or a 2-coat float finished render
- As a decorative textured finish for external wall systems – **webertherm XM**

| Insulation Board | Reinforcement | Fixing | 1st Coat | 2nd Coat | Finish |
|------------------|---------------|------------|---------------------|---------------------|---|
| EPS MFD | Meshcloth | Mechanical | weberend LAC | | weber PR310 and webermineral TF |
| PHS | Meshcloth | Mechanical | weberend LAC | weberend PTC | weber PR310 and webermineral TF |

Uses

- Decorative, textured finish to a prepared surface

Constraints

The quality of application of this material depends on suitable operative skills and product familiarity.

Not recommended for use over 20°C.

Restrictions on weather conditions during application and curing must be respected.

Sound trade practices and printed instructions must be followed.

Good access and appropriate protection must be provided.

Features and benefits

- Weather resistant
- Ready mixed – only the addition of potable water required on site for ease of use
- Can be used from 1°C
- Durable and resilient
- Fast-setting to prevent wash-off
- Supported by comprehensive technical services

Colours

webermineral TF is available in a range of colours.

Specifiers should consult the **Weber** colour charts and whenever possible obtain sampler prior to specification.

webermineral TF

Application

To ensure colour consistency, the material required for complete and adjoining panels should be of the same batch number or be thoroughly mixed together before use.

Agree an acceptable finish appearance on a sample area with architect or supervising officer before proceeding with large-scale application.

Water addition: 3.40 – 4.40 litres/20 kg bag.
Clean potable water – no other additives.

Mix the **webermineral TF** with a paddle mixer. Do not over-mix. If the material has been allowed to stand for 5 – 10 minutes, it may be necessary to remix (do not add water) immediately prior to application.

Prime the prepared surface with **weber PR310** applied by brush or spray. Ensure complete coverage of wall to be treated to prevent 'grinning through' of the background. **weber PR310** is of low viscosity and easily applied. Check batch numbers and colours of the material required to complete working area. Stir well in bucket and if required, make minor adjustments to workability with a small splash of water, thoroughly mixed in.

Apply **webermineral TF** with a steel float and hawk to work area. Use a thin plastic float to finish **webermineral TF**. Evenness of cover and texture are of paramount importance.

Maintain a steady flow of application and keep a wet edge on all incomplete edges.

webermineral TF will set and gain hardness in a similar manner to all conventional mineral renders and in common with all other mineral renders, newly applied render must not be allowed to dry out too quickly i.e they must be allowed to cure and fully hydrate. Therefore in extreme hot weather conditions it may be necessary to protect the newly applied render from the sun and drying winds.

Refer to BS EN 13914-1:2005 *Design, preparation and application of external renders and internal plastering*.

Good practice

Do not apply:

- If frost is forecast within 12 hours of use
- In damp/wet conditions
- In temperatures below 1°C or above 20°C
- On elevations in direct sunlight or where the substrate is hot

The workability characteristics of the product specifically relating to setting will be reflected by the local ambient climatic conditions. Consideration should be given to a shorter working open time in temperatures leading up to 20°C and beyond, this will diminish further if combined with a drying cross wind during application. Working in warm direct sunlight should be avoided at all times, as the ability to maintain a flowing edge and a consistent texture will become progressively harder.

If these types of conditions are anticipated we would suggest that the intended works are assessed to create manageable sized working panels and/or the number of available operatives is increased to carry out the application effectively. Alternatively please select another decorative finish from the Weber portfolio.

Coverage

weber PR310
webermineral TF

Coverage
0.25 litres/m²
2.25 kg/m²

Packaging

webermineral TF is supplied in 20 kg paper sacks with batch code, description and colour on the side.

Storage and shelf life

Store in clean dry conditions above 5°C.

When stored unopened in correct conditions a shelf life of 12 months can be expected.

Protect from frost.

Technical support and advice

During the planning stages of a project, advice should be sought from **Weber** technical staff.

Advice based on technical expertise together with unrivalled practical experience is freely available and covers:

Design: assistance with the selection of the appropriate system, including working details and U-value calculations.

Pre-contract documentation: specifications typical details, method statements.

Health and safety

Wear protective gloves/ protective clothing/eye protection/face protection.

For further information, please request the Material Safety Data Sheet for this product.

Technical services

Weber's Customer Services Department has a team of experienced advisors available to provide on-site advice both at the specification stage and during application. Detailed specifications can be provided for specific projects or more general works. Site visits and on-site demonstrations can be arranged on request.

Technical helpline
Tel: 08703 330 070
e-mail: technical@netweber.co.uk

Sales enquiries

Weber products are distributed throughout the UK through selected stockists and distributors. Please contact the relevant Customer Services Team below for all product orders and enquiries.

UK and Ireland
Tel: 08703 330 070
Fax: 0800 014 2995
e-mail: sales@netweber.co.uk

Saint-Gobain Weber

Dickens House, Enterprise Way, Maulden Road, Flitwick, Bedford MK45 5BY, UK
Tel: 08703 330 070 Fax: 0800 014 2995 e-mail: mail@netweber.co.uk
www.netweber.co.uk

To the best of our knowledge and belief, this information is true and accurate, but as conditions of use and any labour involved are beyond our control, the end user must satisfy himself by prior testing that the product is suitable for his specific application, and no responsibility can be accepted, or any warranty given by our Representatives, Agents or Distributors. Products are sold subject to our Standard Conditions of Sale and the end user should ensure that he has consulted our latest literature.