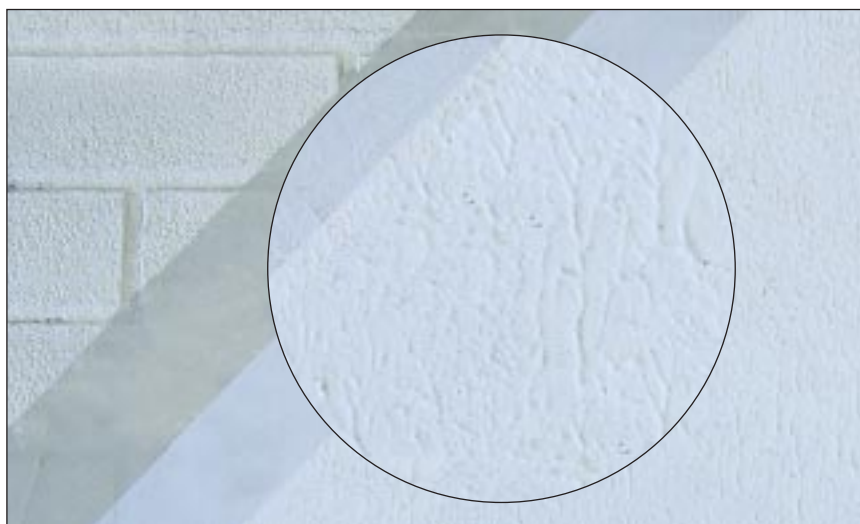


A range of weatherproof
elastomeric coatings and systems
for the protection of external
facades

santane EFL and TL



About this product

The **santane** range of coatings are elastomeric, polymer-based materials for the decoration of new and existing facades. The products form the basis of six refurbishment systems for the decoration and repair of existing facades.

Technical data

The 6 santane systems

System	Crack bridging	Primer	Base coat	Finish coat	
1	< 0.2 mm	weber SL410 weber PR335	N/A	1 x EFL (400 g/m ²) or 1 x TL (1500g/m ²)	
2	< 0.5 mm	weber SL410 weber PR335	1 x EFL (250 g/m ²)	1 x EFL (250 g/m ²) or 1 x TL (1500 g/m ²)	
3	< 1 mm	weber SL410 weber PR335	1 x EFL (400 g/rn ²)	1 x EFL (400 g/m ²) or 1 x TL (1500 g/m ²)	For cracks in smooth/flat substrates
4	< 2 mm	weber SL410 weber PR335	1 x EFL (400 g/m ²) + mesh NT/Ti 1 x EFL (400 g/m ²)	1 x EFL (400 g/m ²) or 1 x TL (1500 g/m ²)	
5	< 1 mm	weber SL410 weber PR335 + 1 – 2 mm renovex P	1 x EFL (400 g/m ²)	1 x EFL (400 g/m ²) or 1 x TL (1500 g/m ²)	
6	< 2 mm	weber SL410 weber PR335 + 1 – 2 mm renovex P	1 x EFL (400 g/m ²) + mesh NT/Ti 1 x EFL (400 g/m ²)	1 x EFL (400 g/m ²) or 1 x TL (1500 g/m ²)	For mosaics and small to medium cracks

Uses

- A decorative coating for external walls
- As part of a system to refurbish facades with existing coatings or mosaics (glass or ceramic)
- Suitable for application onto:
 - Concrete
 - Rendered brickwork
 - Rendered blockwork
 - Mosaics
 - Existing polymer-based coatings
 - Existing painted surfaces

Constraints

Do not apply:

- During very humid weather conditions or if rain is forecast
- During extreme hot weather or when exposed to strong winds
- On damp or frozen/thawing surfaces
- On horizontal surfaces exposed to wet conditions
- On friable coatings or coatings that have lost adhesion

Features and benefits

- ▲ Resistant to cracking: up to 2 mm (EFL)
- ▲ Supplied in a range of colours
- ▲ Supplied in smooth (EFL) and textured (TL) finishes
- ▲ Provides a durable weatherproof protection to the substrate
- ▲ Can be used to bridge movement joints using ancillary products
- ▲ Has anti-carbonation properties for the protection of reinforced concrete

Colours

santane EFL and TL are available in a range of 20 colours. Specifiers should consult the Colour Chart on page 31 of the specifiers' handbook **Weber render solutions** and, whenever possible, obtain samples prior to specification.

santane EFL and TL

Preparation

Surfaces must be sound, flat, clean and dry. Existing coatings should be removed if deemed to be unstable and with poor bond. Existing coatings should also be removed if they are epoxy/ polyurethane or if the coating is greater than 300 µm when applying **santane** systems 2, 3, 4, 5 and 6.

Porous or friable substrates should be treated with a one coat application of **weber SL410**. This should be allowed to dry prior to the application of **weber PR335**.

Widen out cracks less than 1 mm to 5 mm by 5 mm deep with a disk cutter or sharp tool. There is no need to widen cracks greater than 1 mm. Cracks greater than 2 mm should be treated as movement joints.

Existing construction movement joints should be completely removed and a new joint formed. Details are available from **Weber's** Technical Department on request.

Prime the whole surface with **weber PR335**. Fill cracks with a suitable sealant.

If **santane** systems 5 or 6 are adopted, the substrate may need levelling to provide a flat surface for the final coating. This is likely to be the case for the refurbishment of mosaic tiles or brickwork for example. In order to level the surface apply **renovex P** in accordance with the relevant instructions.

Allow 2 – 3 days for the levelled surface to dry before priming for the final coatings.

Apply one coat of **weber PR335** using a wool or foam roller and allow to dry for 24 hours prior to the application of the **santane** finish.

Application

Incorporating mesh

Where the system specifies the incorporation of a mesh, apply one coat of **santane EFL** at the rate of 400 g/m² and immediately incorporate the mesh using a roller or stainless steel trowel. Use **mesh Ti** for slightly uneven or irregular surfaces and **mesh NT** on smooth/flat surfaces. Mesh must cover at least 50 mm beyond the edges of all cracks and be completely encapsulated by the coating.

A second application of **santane EFL** should be carried out when the initial coat is dry. The finish coat of either **santane EFL** or **TL** is applied when all intermediate coats are dry.

santane EFL

When the primer is dry, apply **santane EFL** in a crisscross manner, with a wool roller, and regulate the thickness of each coat.

Provide finish by passing a wool or foam roller gently over the final coat in a vertical manner, according to the finish required. The preceding coats (primer and intermediate coats) must be dry before applying the finish coat (usually 24 hours at 20°C and 65% RH).

The thickness of the dry film varies between 0.2 mm and 0.7 mm dependent on the system adopted.

Apply **santane EFL** at temperatures between 5°C and 35°C. Do not apply at a relative humidity over 80%.

santane TL

For system 1, apply **santane TL** to the primed substrate using a stainless steel trowel.

For systems 2, 3, 4, 5 and 6 apply **santane TL** to the primed surface over one or two applications of **santane EFL**.

The finish is achieved by using a plastic float rubbed in a circular action over the applied material.

The thickness of the dry film varies between 1.8 mm and 2.0 mm dependent on the system adopted.

Apply **santane TL** at temperatures between 5°C and 35°C. Do not apply at a relative humidity over 80%.

Packaging

weber PR335 is supplied ready for use in 20 kg plastic pails.

santane EFL and **TL** are supplied ready for use in 20 kg plastic pails.

Coverage

For roller application of **santane EFL** allow 250 – 400 g/m² per coat for flat surfaces dependent on the system.

For **santane TL** allow 1500 g/m² for flat surfaces.

Note: These estimates take no account of wastage and will vary according to the type of surface involved.

Storage and shelf life

When stored airtight in a dry place at temperatures above 5°C and protected from frost, shelf life is 12 months from date of manufacture.

Do not over-stack.

Health and safety

santane EFL/TL and weber PR335

Essentially not hazardous.

Not harmful during normal use.

After contact with skin, wash immediately with plenty of water.

In case of contact with eyes, rinse immediately with plenty of water and seek medical advice.

Keep out of the reach of children.

weber SL410

Contains low boiling point treated naphtha (white spirit).

Flammable.

Harmful: may cause lung damage if swallowed.

Do not breathe vapour. Avoid contact with skin and eyes.

Wear suitable protective clothing, gloves and eye / face protection.

If swallowed, do not induce vomiting: seek medical advice immediately and show container or label.

For further information, please request the Material Safety Data Sheets for these products.

Technical services

Weber's Customer Services Department has a team of experienced advisors available to provide on-site advice both at the specification stage and during application. Detailed specifications can be provided for specific projects or more general works. Site visits and on-site demonstrations can be arranged on request.

Technical helpline

Tel: (01525) 722110
Fax: (01525) 718988

Sales enquiries

Sales, England and Wales

Tel: (01782) 813028
Fax: (01782) 839028

Sales, Scotland

Tel: (0141) 445 0121
Fax: (0141) 445 0122

Sales, Ireland

Tel: (028) 9335 2999
Fax: (028) 9332 3232

Saint-Gobain Weber Ltd

Dickens House, Enterprise Way, Maulden Road, Flitwick, Bedford MK45 5BY, UK
Tel: 08703 330070 Fax: (01525) 718988 e-mail: mail@weberbuildingsolutions.co.uk