



JOHNGUEST.COM • (00 44) (0) 1895 449233



The billions of John Guest fittings currently in use around the world on a wide variety of application types have gained the brand worldwide recognition as the industry leader.

DESIGN &  
SUPPORT



## OEM DESIGN AND SUPPORT

### CONTENTS:

---

|                                     |         |
|-------------------------------------|---------|
| John Guest Worldwide Presence ..... | p 03    |
| Engineering & Heritage .....        | p 05    |
| The Push-fit Concept .....          | p 07    |
| OEM Support Service .....           | p 09    |
| Advantages .....                    | p 11    |
| Speedfit Technology .....           | p 13-18 |
| Contact .....                       | p 19-20 |





## JOHN GUEST WORLDWIDE PRESENCE

The company's influence and product ranges extend across the world.

Ten fully owned sales subsidiaries working globally in partnership with clients to provide lean supply and enable modern methods of manufacturer.

Recognition for this global expansion has been attained by successfully winning the Queens Award for Export on three occasions.

The billions of JG connectors currently in use around the world through a variety of applications & sectors, has proven to be the company's strongest endorsement.

50 years of international design & technical competence.





## ENGINEERING & HERITAGE

When Mr John Guest first opened his factory doors in 1961, he was determined to run a company where quality of product and excellence of service underpinned its ethos. A strong spirit of innovation was encouraged from the outset, which led to the development and invention of the first Speedfit push-fit fittings in the 1970s by John Guest himself.

The John Guest model is increasingly rare in an age of outsourcing and diversification. Strict control over the entire engineering and manufacturing process ensures only products of the highest quality are produced.

This vertically integrated supply chain means that a product's entire journey from initial concept, through to tool design and tool construction, and ultimately through to product manufacture, assembly and testing, has been fully undertaken by John Guest.

Whilst this philosophy provides ultimate control and responsibility over the quality of the product that leaves the production line, it also gives John Guest flexibility to respond quickly to customer ideas and market trends.





## THE PUSH-FIT CONCEPT

### Overview

With significant engineering expertise subtly hidden behind the John Guest push-fit concept, the uniqueness of each JG connector lies within its high reliability of performance, longevity of service and suitability for all sorts of industries.

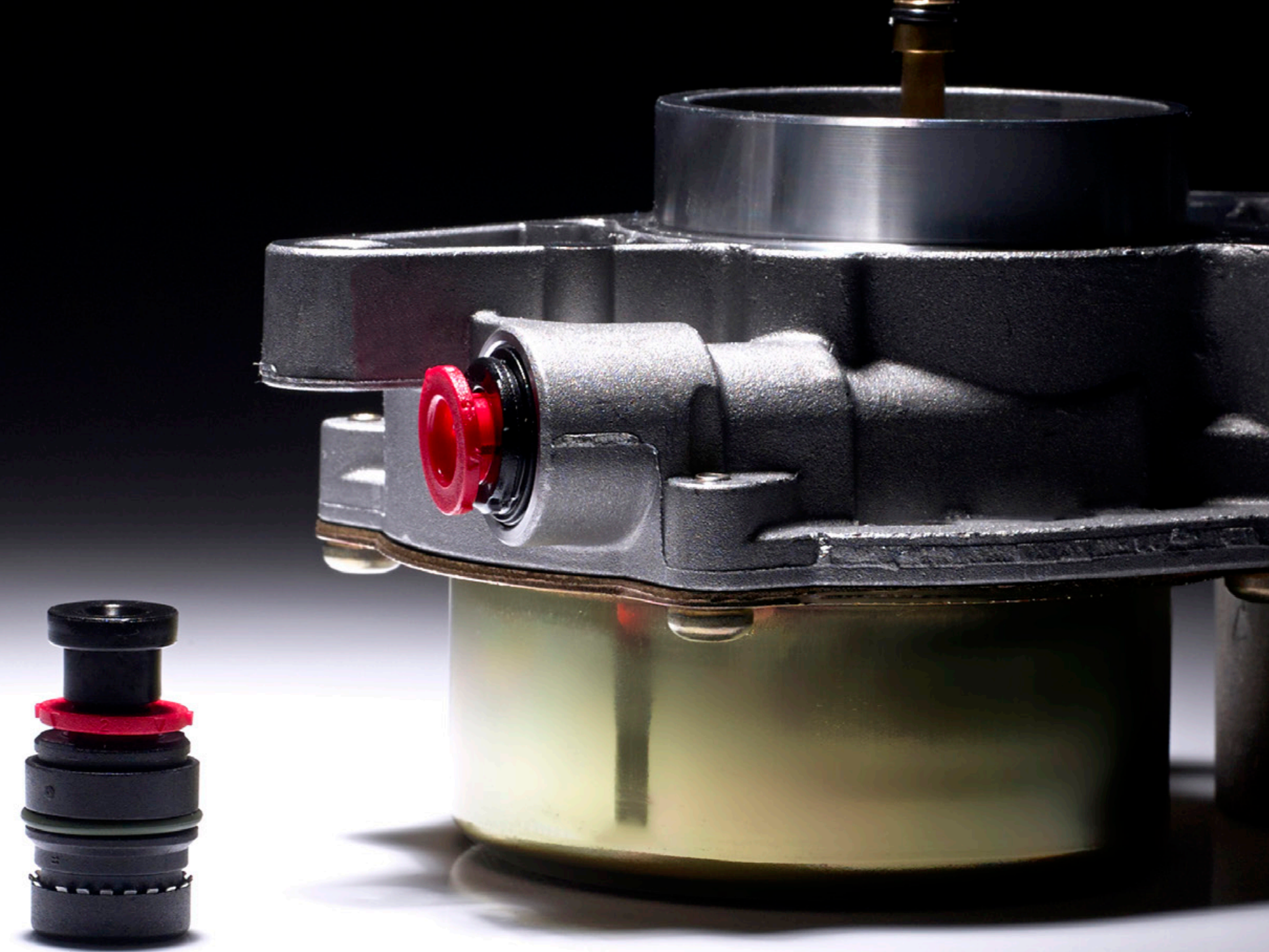
The billions of John Guest fittings currently in use around the world on a wide variety of application types have gained the brand worldwide recognition as the industry leader. John Guest systems are easy to assemble, need only a low insertion level but offer a high burst pressure.

### Advantages

The John Guest Push-fit technology for OEM offers:

- Tailored connector solutions to individual specification
- Tubing connections become fast and very simple
- Ensuring products offer longstanding connection reliability
- Speedfit technology can be built within variety of soft metal or plastic housing materials

***Speedfit® Technology***





## OEM SUPPORT SERVICE

By working in close partnership and consultation, other manufacturers have the ability to integrate John Guest's Speedfit technology into their own branded products. A wide number of engineers count on John Guest to provide push-fit solutions with high performance whilst providing best overall value through a strong supply chain.

Significant investment has been placed into research and development resources throughout the organisation ensuring an infrastructure focused on innovation and design excellence. By working with companies in industries as diverse as Automotive, telecommunications, and drinks dispense, a huge array of tubing connection knowledge has been honed and developed.

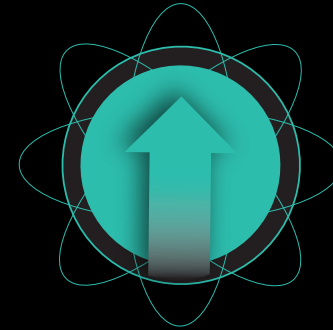
A truly global company with a large technical sales resource in multiple countries, John Guest can support new projects from early concept to CAD design, prototype testing, and phases up to full production. Relevant OEM push-fit connector advice and support is never far away.





## ADVANTAGES

- World leading push-fit engineering expertise
- Globally recognised brand representing quality and reliability
- Quality approvals recognised by all relevant international bodies
- Large global technical support team
- 10 global distribution subsidiaries with lean supply capability to all parts of the world
- Multi industry innovation focus providing cross-pollination of ideas and innovation



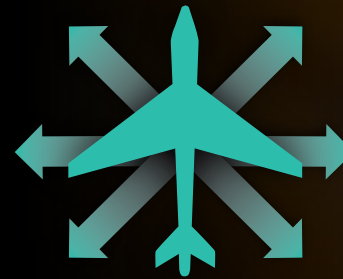
World leading engineering expertise



Global technical support team



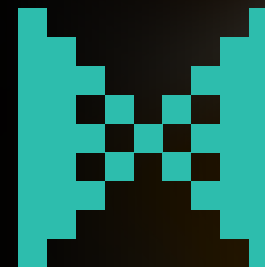
Globally recognised brand



Global distribution subsidiaries and distributors



Quality approvals recognised by international bodies



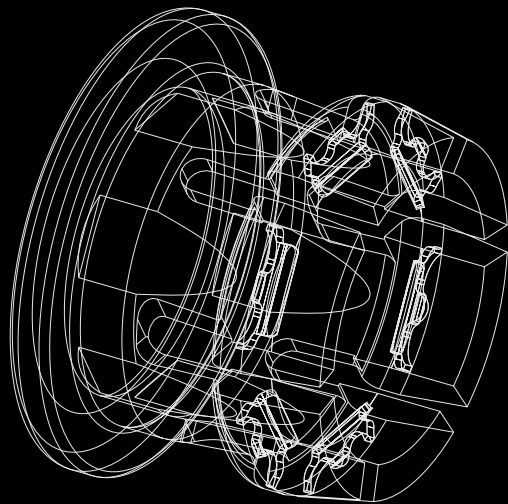
Cross-pollination of ideas from one sector to another



# Speedfit® Technology

The core technology within our products is adaptable for use in many different and unusual applications. Here we have highlighted a few of our varied uses.

There are billions of Push-fit fittings using our technology around the world. Adaptability, longevity and high performance makes them an integral part of many innovative devices, from global brands to niche market sectors.



Hydroponic Farming



Water Filtration



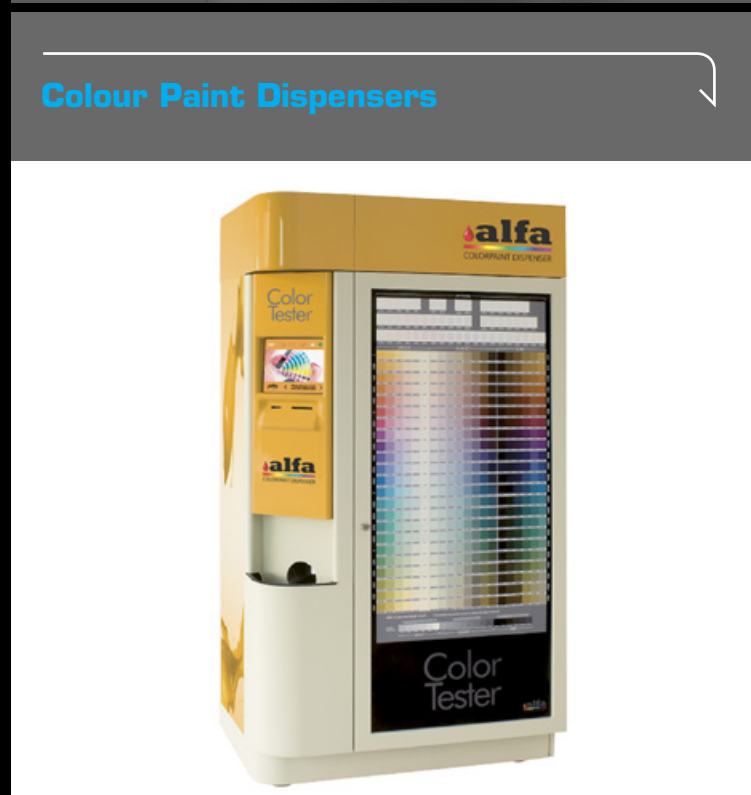
Agricultural Equipment



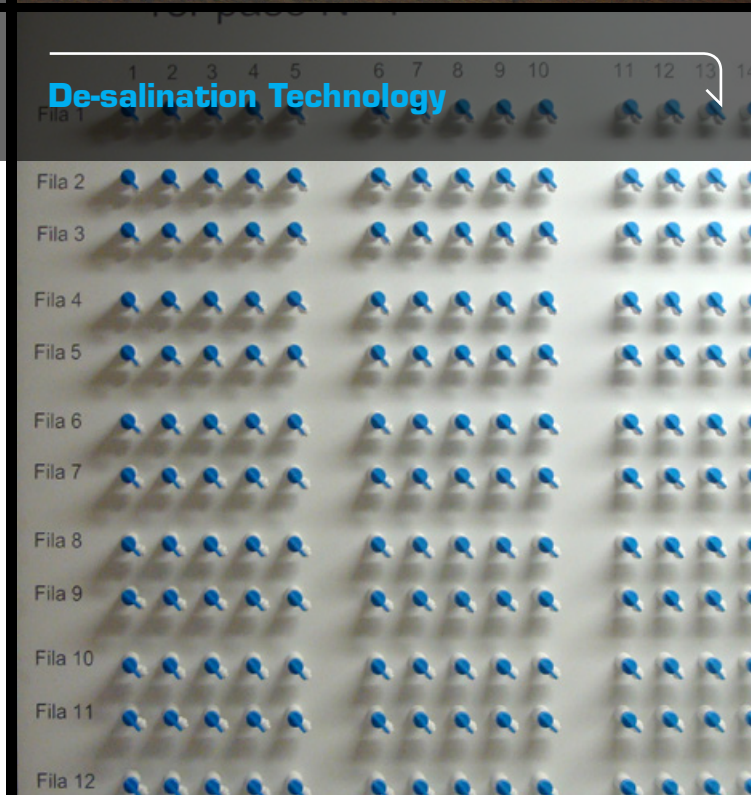
Fuel Cells



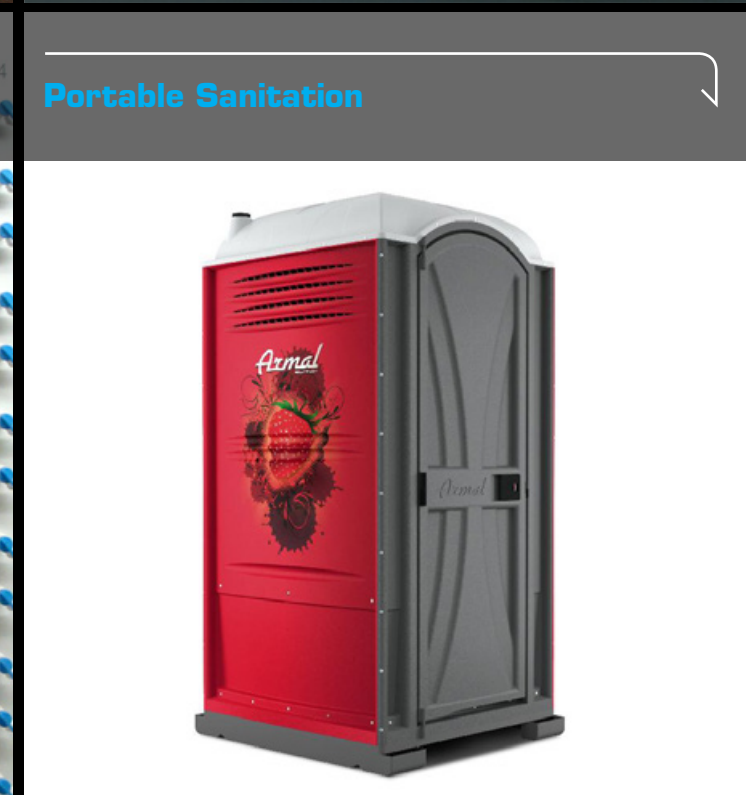
Animal Feeding Equipment



Colour Paint Dispensers



De-salination Technology



Portable Sanitation



## PROJECT EXAMPLES - PLASTIC CARTRIDGE

### Colour Paint Dispenser

Alfa's Colorpaint Dispensers



### Technical Specifications

- Pressure – 0 to 3 bar
- Temperature – ambient

Based in Italy, Alfa is a manufacturer of colour paint dispenser technology, considered to be among the best and most innovative tinting solutions on the market. Their integrated colour dispense concept is the result of extensive experience in the colorimetric software and the chemistry of varnishing products, as well as significant know-how in the field of fluid dynamics.

## PROJECT EXAMPLES - PLASTIC CARTRIDGE

### GCH Magnetic Filters

ADEY



### Technical Specifications

- Suitable for hot, cold & GCH systems
- Working temperatures: - GCH - Malfunction up to 114C, Max 105 C, Normal 82 C
- GCH pressure up to 3 bar
- John Guest 22mm Cartridge designed & manufactured under a fully integrated system assessed by BSI to BS EN ISO9001

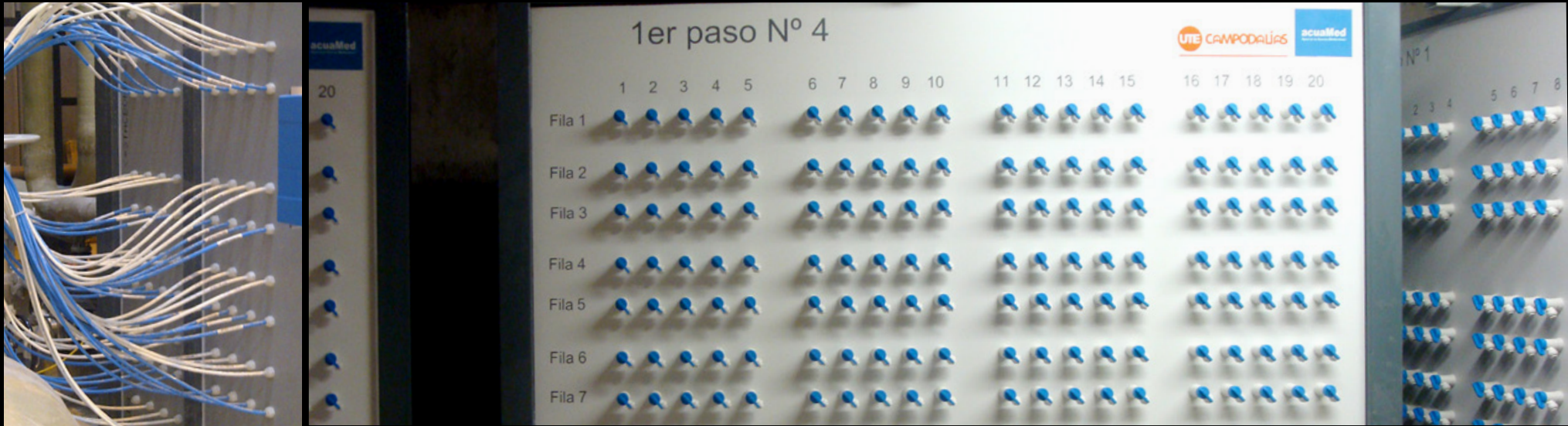
ADEY Professional Heating Solutions is the UK's leading manufacturer of magnetic filters for the maintenance and protection of central heating systems. ADEY has trusted John Guest Speedfit's push-fit technology to enhance their magnetic filter performance by allowing installers to fit the product in less than a minute.



# PROJECT EXAMPLES - PLASTIC VALVES

## De-salination technology

Acciona Agua



### Technical Specifications

- Pressure – 2 to 3 bars at room temperature
- Liquid – no chemical considerations (potable water)

Based in Spain, Acciona Agua are a leader in the water treatment sector, specialising in the design of water purification and reverse osmosis desalination plants. The company operates more than 75 de-salination plants in the world, which produces 663 cubic hectometres of potable water daily - equivalent to 266,516 Olympic pools.

# PROJECT EXAMPLES - PLASTIC FITTINGS & TUBING

## Agricultural equipment

Altek



### Technical Specifications

Vari Flow System provides variable flow control of each nozzle position along a spray boom.

- Each Nozzle position has clusters of 4 individually pneumatic controlled nozzles.
- Each nozzle positions flow rate is controlled separately; working pressure - 1 bar up to 8 bar.

Altek International is a subsidiary of the German manufacturer Altek GmbH. In their manufacturing facility located in Hailfigen, Germany, Altek GmbH designs and produces components for agricultural sprayers such as pumps, filters, regulators, ball valves, section valves, electric & pneumatic nozzle bodies, as well as a full range of sprayer accessories and plug-in fittings.



# CONTACT

To discuss your next design solution or innovation requirement;

John Guest Ltd  
Horton Road  
West Drayton  
Middlesex  
UB7 8JL

info@johnguest.com  
00 44 (0)1895 449233  
johnguest.co.uk



John Guest USA Inc.  
180 Passaic Avenue, Fairfield,  
New Jersey, 07004, USA  
Tel: (001) 973 808 5600  
Fax: (001) 973 808 5036



John Guest s.r.l.,  
Via Vincenzo Lancia 13,  
10038 Casabianca - Verolengo  
(Torino), Italy  
Tel: (00 39) (011) 957 5880  
Fax: (00 39) (011) 957 6144



John Guest France S.A.,  
143-147 Avenue Charles Floquet,  
Parc Gustave Eiffel, F-93593  
Le Blanc Mesnil, Cedex, France  
Tel: (00 33) (1) 48 65 52 29  
Fax: (00 33) (1) 48 65 43 40



John Guest s.l.,  
C/ de La Electronica No. 7, Poligono  
Industrial La Ferreria, Montcada I  
Reixac, 08110 Barcelona, Spain  
Tel: (0034) (93) 575 0027  
Fax: (00 34) (93) 575 0178



John Guest GMBH,  
Ludwig-Erhard-Allee 30,  
D-33719 Bielefeld, Germany  
Tel: (00 49) (521) 972 560  
Fax: (00 49) (521) 972 563 81



John Guest Korea Ltd,  
Unit 552-27 Kajwa Dong, Seo Ku,  
Incheon City, 404-812 Korea  
Tel: (00 82) (32) 584 3370  
Fax: (00 82) (32) 584 3372



John Guest Czech s.r.o.,  
Vrbenska 2290, CZ-37001 Ceske  
Budejovice, Czech Republic  
Tel: (00 420) (387) 002 040  
Fax: (00 420) (387) 002 048



John Guest Pacific Ltd,  
81 Apollo Drive, Rosedale, Albany,  
Auckland, New Zealand  
Tel: (00 64) (9) 8281353



John Guest Polska Sp. z o.o.,  
Ul. StaroŹ cka 7, 61-361  
Poznan, Poland  
Tel: (00 48) (61) 87 80 408  
Fax: (00 48) (61) 87 80 285



John Guest Pacific Ltd,  
Unit 6, 33 NyranŹ Street, Lidcombe,  
Sydney, N.S.W. 2141, Australia  
Tel: (00 61) (2) 9737 9088  
Fax: (00 61) (2) 9737 9122



