



Speedfit® Air Products



***COMPRESSED AIR FITTINGS AND PIPE
PNEUMATIC FITTINGS
CARTRIDGES
LLDPE TUBE***

Product List
JANUARY 2016



The John Guest Group has a long established reputation as a world leading manufacturer of push-fit fittings, tube and other fluid control products. A reputation built on producing consistently high quality products with an ongoing commitment to value engineering and product development.



Quality Manufacture

A commitment to quality is at the heart of the John Guest philosophy.

The strictest control is maintained by virtue of the fact that design and manufacture is carried out in modern purpose built manufacturing centres in West London and at Maidenhead in Berkshire.

Maintaining control over the whole process from initial tool design and tool making through to final assembly and testing ensuring that only products of the highest quality are produced.

The company believe it is this commitment to quality that has led to it receiving prestigious awards from many of the world's leading testing and approvals organisations.

John Guest is a preferred supplier to many international companies.



Contents

How to make a Connection

3



Compressed Air Fittings and Pipe

Compressed Air Products

A push-fit system of fittings and pipe which means a compressed air supply can be installed quickly and easily with much reduced production down time.

5 - 6



Pneumatic Fittings

Metric Size Fittings

Metric Size Fittings in 4 to 12mm sizes. Selected items have Superthread. A unique thread with integral seal suitable for 5 different thread forms.

7 - 10

Banjo Flow Controls

Banjo Flow Controls, compact envelope size and precise adjustment.

11

Miniature Fittings

Miniature Fittings, specially designed for miniature pneumatics applications.

11 - 12

Imperial Size Fittings

Inch Size Fittings in 5/32" to 1/2" sizes.

13 - 16



Accessories

Accessories

Tube Cutters, Flow Bend Clips, Collet Covers and Tube Inserts.

16 - 17



Cartridges

Cartridges

A cost effective way of incorporating a push in connection into a wide variety of plastic and brass housings.

18



Tubing

LLDPE Tube

Strong but flexible, 6 sizes and 8 colours.

19 - 20



Technical Checklists, Additional Information and General Conditions of Sale

20 - 22

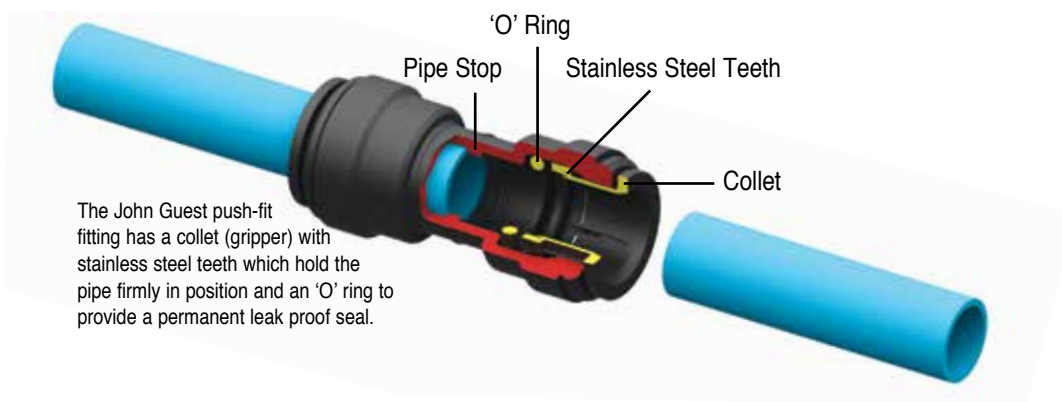
THE EASY TO USE PUSH-FIT SYSTEM FOR COMPRESSED AIR

The John Guest range of push-fit fittings and pipe provide the ideal connection from compressor receiver to air line service components through to complete ring main and take off points. A compressed air system can be installed quickly and easily, compared with other installation methods, time savings of at least 50% are easily achievable.

No need to prepare threaded pipe or solvent, all the connections can be made with a simple push-fit action. The system is then immediately ready for use. Complex systems can be assembled much more rapidly than with traditional methods and because fittings are easy to disconnect, systems can be altered or extended with much reduced production down time.

The fittings are produced in either a tough engineering plastics material or in brass in sizes 12mm to 28mm. They are intended for use with John Guest nylon pipe but can also be used with copper or aluminium pipe.

EASY TO MAKE A CONNECTION

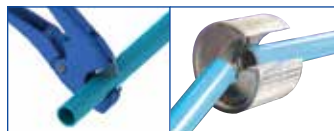


THREE EASY STEPS

Fittings and pipe should be kept clean and undamaged before use.

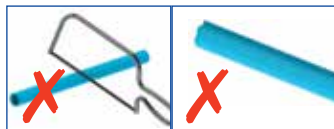
Cut the pipe square.

We recommend the use of the JG Pipe Cutter for rigid nylon pipe and Aluminium Pipe Cutters for aluminium pipe.



DO NOT use a hacksaw.

To avoid damage to the 'O' ring remove burrs and sharp edges.



Push up to pipe stop.



Pull to check secure.

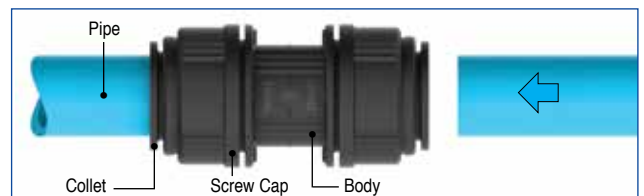
Test the system before use.



To disconnect, ensure the system is depressurised. Push the collet towards the fitting and remove the pipe. The fitting can be reused.

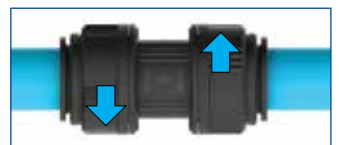


28MM FITTINGS

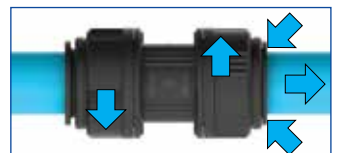


28mm fittings also have a collet with stainless steel teeth and an 'O' ring.

After inserting the pipe, a screw cap is turned approx 1/4 turn. This locks the collet in place and reduces lateral and sideways movement of the pipe.



To disconnect, turn the screw cap 1/4 turn, push in the collet and remove the pipe. The fitting and pipe can be reused.



Nylon, Copper & Aluminium Pipe

Whilst we recommend the use of John Guest Rigid Nylon Pipe, John Guest Fittings can also be used with copper or aluminium pipe.



UNIQUE FEATURES

STEM ELBOW

Designed to simplify pipe connections in restricted spaces, the Stem Elbow gives an instant swivel fitting so a pipe can be orientated in any direction.



Can be used with an elbow to make 'U' turn connection.



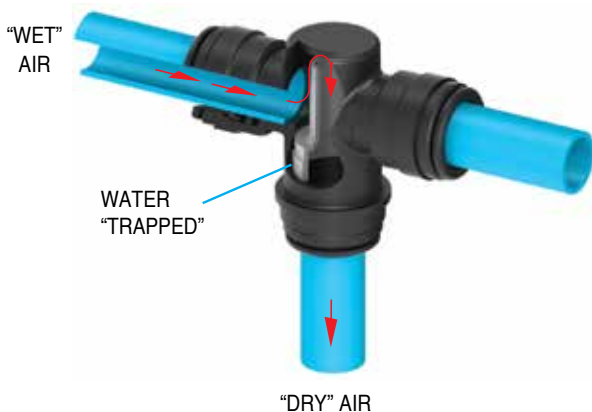
Please note a collet cover cannot be used on a Speedfit end assembled with the stem of a 22mm Stem Elbow.



Can be used with a Tee.

WATER TRAP TEE

The new Water Trap Tee from John Guest solves the on-going problem of moisture in a compressed air system and provides the easy alternative to the need to install "Swan Necks".



The ingenious inside arrangement of the fitting allows air to flow, with minimum head loss, from the main to take-off point without allowing water to follow. The moisture is retained in the line to be drawn off at some suitable location.

Installation

It is of vital importance for the correct function of the Water Trap Tee that the air distribution system be nearly horizontal and that the outlet port be facing downwards.

WATER TRAP TEE CONVERTOR

The Water Trap Tee Convertor is a simple convenient way of converting a standard John Guest 28mm Tee to a Water Trap Tee.

This will stop condensing water entering the vertical take off spur.

The air supply needs to be installed with the correct fall and water drain points regularly vented.

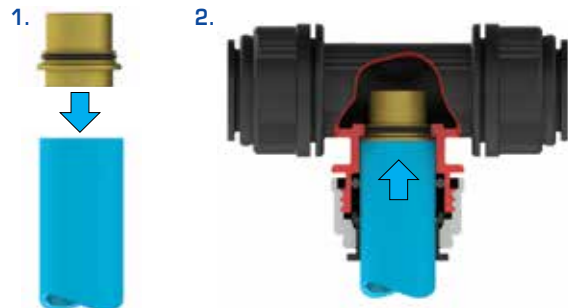
To Assemble

Use either John Guest 28mm Nylon Pipe or 28mm copper pipe. The pipe to be cut square and be free of burrs.

Press the shorter spigot into the pipe. The fit on copper pipe will be loose, this will not affect the function.

Push the pipe and convertor up to the pipe stop of the centre leg of the tee.

Turn the screw cap approx 1/4 turn to lock the pipe in position.



END STOP

The End Stop can be used to provide a permanent connection or a temporary shut off. Because it is easy to disconnect the fitting from the pipe, the End Stop can be put in place to be removed at a later date to allow a system to be extended or modified.



John Guest®

COMPRESSED AIR FITTINGS

A push-fit system of fittings and pipe which means a compressed air system can be installed quickly and easily with much reduced production down time. It is also easy to rearrange and extend a system.



STRAIGHT ADAPTOR

PART NO.	PIPE OD	THREAD BSP	BAG QTY	BOX QTY
PM011213E	12 x	3/8	10	150
PM011214E	12 x	1/2	10	150
PM011513E	15 x	3/8	10	150
PM011514E	15 x	1/2	10	150
PM011516E*	15 x	3/4	10	50
PM011814E	18 x	1/2	-	70
PM012216E	22 x	3/4	-	50
PM012818E	28 x	1	-	30

*No thread seal



EQUAL ELBOW

PART NO.	PIPE OD	BAG QTY	BOX QTY
PM0312E	12	10	100
PM0315E	15	10	50
PM0318E	18	5	50
PM0322E	22	5	30
PM0328E	28	-	20



STRAIGHT CONNECTOR

PART NO.	PIPE OD	BAG QTY	BOX QTY
PM0412E	12	10	100
PM0415E	15	10	100
PM0418E	18	10	50
PM0422E	22	10	50
PM0428E	28	-	25



REDUCING TEE

PART NO.	PIPE OD ENDS	TUBE OD BRANCH	BAG QTY	BOX QTY
PM3018AE	18 -	15	5	30
PM3022AE	22 -	15	5	20



STEM ADAPTOR

PART NO.	STEM OD	THREAD BSP	BAG QTY	BOX QTY
PM051213E	12 x	3/8	10	200
PM051214E	12 x	1/2	10	150
PM051513E	15 x	3/8	10	150
PM051514E	15 x	1/2	10	100
PM051814E	18 x	1/2	10	100
PM052214E	22 x	1/2	10	100
PM052216E	22 x	3/4	10	50

Converts push-fit end to male thread



TWO WAY DIVIDER

PART NO.	TUBE OD	BAG QTY	BOX QTY
PM2315E	15	5	50



REDUCER

PART NO.	STEM OD	PIPE OD	BAG QTY	BOX QTY
PM061510E	15 -	10	10	200
PM061512E	15 -	12	10	100
PM061815E	18 -	15	10	100
PM062215E	22 -	15	10	50
PM062218E	22 -	18	10	50
PM062815E	28 -	15	10	50
PM062822E	28 -	22	-	50



WATER TRAP TEE

PART NO.	PIPE OD ENDS	BAG QTY	BOX QTY
PMTT22E	22	5	20

The easy alternative to the need to install a 'Swan Neck'



U-BEND

PART NO.	TUBE OD	BAG QTY	BOX QTY
PMUB15E	15	10	50



END STOP

PART NO.	PIPE OD	BAG QTY	BOX QTY
PM4612E	12	10	250
PM4615E	15	10	200
PM4618E	18	10	100
PM4622E	22	5	80



PORTING BLOCK

PART NO.	BAG QTY	BOX QTY
JG-L-WSK 5 x 1/2" Connections	1	10

Supplied with blanking plugs
Also available in boxes of 100 Part No JG-L-WSK-L



EQUAL TEE

PART NO.	PIPE OD	BAG QTY	BOX QTY
PM0212E	12	10	50
PM0215E	15	5	50
PM0218E	18	5	30
PM0222E	22	5	20
PM0228E	28	-	10



STEM ELBOW

PART NO.	PIPE OD	STEM OD	BAG QTY	BOX QTY
PM221212E	12 -	12	10	100
PM221515E	15 -	15	10	100
PM221818E	18 -	18	5	50
PM222222E	22 -	22	-	50

Provides a Swivel type Connector



ALUMINIUM WALL BOX

PART NO.	SIZE	BAG QTY	BOX QTY
JGWallBox1/2	1/2	1	10
JGWallBox3/4	3/4	1	10

1/2 or 3/4 female thread on the top.
Both products have 3 x 1/2" female threads on the side.
Supplied with blanking plugs

Speedfit® Air Products



BRASS WINGBACK ELBOW

PART NO.	PIPE OD	THREAD BSP	BAG QTY	BOX QTY
PM15WB	15	x 1/2	-	20
PM22WB	22	x 3/4	-	10



BRASS STRAIGHT ADAPTOR

PART NO.	PIPE OD	THREAD BSPT	BAG QTY	BOX QTY
MM011504N	15	x 1/2	5	100
MM012206N	22	x 3/4	10	50
MM012808N	28	x 1	5	20



MALE BRASS STEM ADAPTOR

PART NO.	STEM OD	THREAD	BAG QTY	BOX QTY
MM051504N	15	x 1/2 BSPT	10	100
MM052206N	22	x 3/4 BSPT	10	50
MM052818N	28	x 1 BSPT	10	20
MM052226N	22	x 3/4 NPT	10	50
MM052228N	22	x 1 NPT	10	30
MM052828N	28	x 1 NPT	10	20

Converts push fit end to male thread.



FEMALE BRASS STEM ADAPTOR

PART NO.	STEM OD	THREAD BSP	BAG QTY	BOX QTY
MM501514N	15	x 1/2	10	100
MM502216N	22	x 3/4	10	50

Converts push-fit end to female thread.



WATER TRAP TEE CONVERTOR

PART NO.	SIZE	BAG QTY	BOX QTY
WTC28	28	1	50

Converts a 28mm Tee to a Water Trap Tee



PLUG

PART NO.	STEM OD	COLOUR	BAG QTY	BOX QTY
PM0812R	12	RED	10	300
PM0815E	15	BLACK	10	200
PM0818E	18	BLACK	10	100
PM0822E	22	BLACK	10	100
PM0828E	28	BLACK	10	50



RELEASE AID

PART NO.	PIPE OD	BAG QTY	BOX QTY
15RA	15	10	500
22RA	22	10	400
28RA	28	10	300



COLLET COVERS

PART NO.	PIPE OD	COLOURS	BAG QTY	BOX QTY
PM1912E	12	BLACK	10	500
PM1915E	15	BLACK	100	400
PM1918E	18	BLACK	10	200
PM1922E	22	BLACK	50	200



PIPE CLIPS AND SPACERS

CLIP PART NO.	PIPE OD	COLOURS	BAG QTY	BOX QTY
PC15E	15	BLACK	50	200
PC22E	22	BLACK	50	100
PC28E	28	BLACK	20	80
SPACER PART NO.		COLOURS	BAG QTY	BOX QTY
PCSE		BLACK	50	400



RIGID NYLON PIPE

PART NO.	SIZE MM x M	PACK QTY
PA-RM1209-3M-20B	12 x 3	20
PA-RM1512-3M-20B	15 x 3	20
PA-RM1814-3M-20B	18 x 3	20
PA-RM2218-3M-20B	22 x 3	20
PA-RM2823-3M-10B	28 x 3	10

3 metre straight lengths.

12 to 22mm in packs of 20. 28mm in packs of 10.



ALUMINIUM PIPE

PART NO.	SIZE MM x M	PACK QTY
AL-RM1513-3M-20B	15 x 3	20
AL-RM1816-3M-20B	18 x 3	20
AL-RM2220-3M-20B	22 x 3	20
AL-RM2826-3M-10B	28 x 3	10

3 metre straight lengths.

15mm to 22mm in packs of 20. 28mm in packs of 10.



ALUMINIUM PIPE CUTTER

PART NO.	PIPE OD
JG-AL-CUTTER15	15
JG-AL-CUTTER18	18
JG-AL-CUTTER22	22
JG-AL-CUTTER28	28



DEBURRING TOOL

PART NO.
JG-DEBURR

For a Technical Specification see page 20.

John Guest®

PNEUMATICS FITTINGS

Super Speedfit Push-in fittings have been specially designed for miniature pneumatics applications. They provide a fast and secure way of connecting tubes and offer considerable advantages over conventional fittings.

Complex tubing systems can be assembled more rapidly than with traditional methods and because Super Speedfit fittings are easy to disconnect, fault finding and maintenance become much easier operations.

They are particularly useful for development, testing or training programmes where systems may need to be constantly reconfigured.

To make a connection, the tube is simply pushed in by hand; the unique John Guest collet locking system holds the tube firmly in place without deforming it or restricting flow.

See easy to make a connection on page 3.

Technical Specification shown on page 20.

USER BENEFITS

- Specially designed for pneumatics
- Suitable for plastic and soft metal tubes
- Grips before it seals
- Quick disconnection and reusable
- No tools needed
- Quality Manufacturer - ISO 9001 listed since 1989
- Superior flow characteristics
- Collet cover prevents accidental disconnection and allows colour coding
- Fittings with prefix PM or PI are produced exclusively in Food and Drug Administration approved materials and are therefore recommended for food quality applications



PNEUMATICS Metric Size Fittings

SuperThread

Selected metric size items have SuperThread, a unique thread seal developed by John Guest to enable male adaptors to be used with a variety of female thread forms. John Guest fittings with brass bodies incorporating the SuperThread can be used with BSP (Parallel), BSPT (Taper), NPTF, PF and PT metal thread forms.

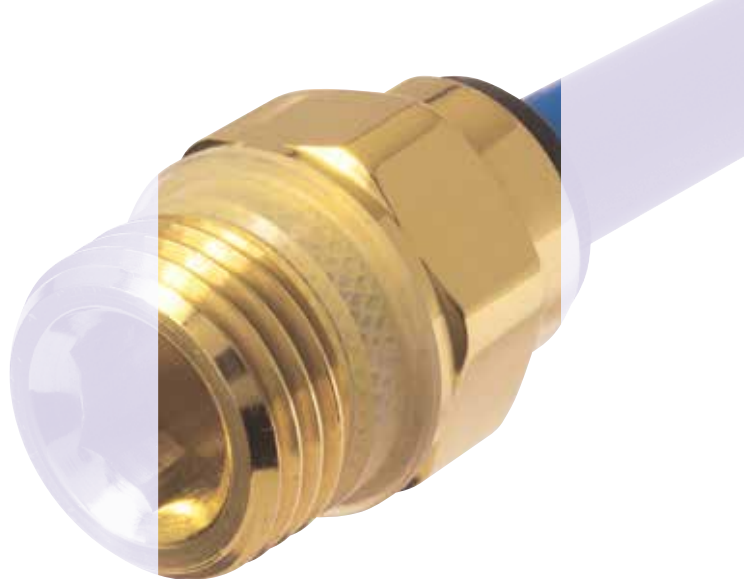
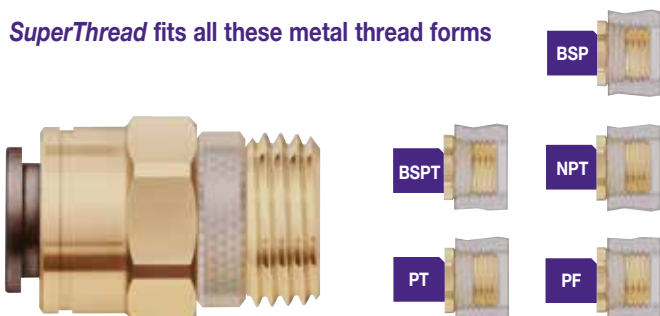
The special Polyurethane seal feature means no sealant need be applied to make an airtight joint. There is no danger of tape entering the system.

Fittings with SuperThread also have countersunk throughbores to provide superior flow characteristics.

The design allows for a smaller compact body and reduced hexagon size.

Maximum Torque Values for SuperThread are shown on page.

SuperThread fits all these metal thread forms



STRAIGHT ADAPTOR
SUPERTHREAD

PART NO.	TUBE OD	SUPER THREAD	BAG QTY	BOX QTY
RM010411	4 x 1/8	10	500	
RM010412	4 x 1/4	10	300	
RM010511	5 x 1/8	10	300	
RM010512	5 x 1/4	10	500	
RM010611	6 x 1/8	10	400	
RM010612	6 x 1/4	10	500	
RM010811	8 x 1/8	10	500	
RM010812	8 x 1/4	10	500	
RM010813	8 x 3/8	10	400	
RM011012	10 x 1/4	10	300	
RM011013	10 x 3/8	10	300	
RM011014	10 x 1/2	10	200	
RM011213	12 x 3/8	10	150	
RM011214	12 x 1/2	10	150	

With integral seal. Thread can be used with BSP, BSPT, NPT, PF and PT.



STRAIGHT ADAPTOR
METRIC THREAD

PART NO.	TUBE OD	METRIC THREAD	BAG QTY	BOX QTY
RM0104M5	4 x M5	10	500	
RM0105M5	5 x M5	10	500	
RM0106M5	6 x M5	10	300	



BRASS STRAIGHT ADAPTOR
BSP THREAD

PART NO.	TUBE OD	THREAD BSP	BAG QTY	BOX QTY
MM010411	4 x 1/8	10	500	
MM010611	6 x 1/8	10	400	
MM010612	6 x 1/4	10	500	
MM010812	8 x 1/4	10	500	

For a Technical Specification see page 20.

PNEUMATICS Metric Size Fittings



**STRAIGHT
ADAPTOR**
BSP THREAD

PART NO.	TUBE OD	THREAD BSP	BAG QTY	BOX QTY
PM010411E	4 x	1/8	10	500
PM010412E	4 x	1/4	10	500
PM010511E	5 x	1/8	10	500
PM010512E	5 x	1/4	10	500
PM010611E	6 x	1/8	10	500
PM010612E	6 x	1/4	10	500
PM010811E	8 x	1/8	10	400
PM010812E	8 x	1/4	10	400
PM010813E	8 x	3/8	10	300
PM011012E	10 x	1/4	10	250
PM011013E	10 x	3/8	10	250
PM011014E	10 x	1/2	10	200
PM011213E	12 x	3/8	10	150
PM011214E	12 x	1/2	10	150



**STRAIGHT
ADAPTOR**
BSPT THREAD

PART NO.	TUBE OD	THREAD BSPT	BAG QTY	BOX QTY
PM010401E	4 x	1/8	10	500
PM010402E	4 x	1/4	10	500
PM010501E	5 x	1/8	10	500
PM010502E	5 x	1/4	10	500
PM010601E	6 x	1/8	10	500
PM010602E	6 x	1/4	10	500
PM010801E	8 x	1/8	10	400
PM010802E	8 x	1/4	10	400
PM010803E	8 x	3/8	10	300
PM010804E	8 x	1/2	10	200
PM011002E	10 x	1/4	10	250
PM011003E	10 x	3/8	10	250
PM011004E	10 x	1/2	10	200
PM011203E	12 x	3/8	10	150
PM011204E	12 x	1/2	10	150

PART NO.	TUBE OD	THREAD NPTF	BAG QTY	BOX QTY
PM010622E	6 x	1/4	10	500



**EQUAL STRAIGHT
CONNECTOR**

PART NO.	TUBE OD	BAG QTY	BOX QTY
PM0404E	4	10	500
PM0405E	5	10	500
PM0406E	6	10	400
PM0408E	8	10	300
PM0410E	10	10	200
PM0412E	12	10	100



**REDUCING
STRAIGHT
CONNECTOR**

PART NO.	TUBE OD	TUBE OD	BAG QTY	BOX QTY
PM200604E	6	- 4	10	400
PM200804E	8	- 4	10	300
PM200806E	8	- 6	10	200
PM201004E	10	- 4	10	200
PM201006E	10	- 6	10	200
PM201008E	10	- 8	10	200
PM201208E	12	- 8	10	100
PM201210E	12	- 10	10	100



EQUAL ELBOW

PART NO.	TUBE OD	BAG QTY	BOX QTY
RM0304E	4	10	500
RM0305E	5	10	500
RM0306E	6	10	400
RM0308E	8	10	400
RM0310E	10	10	200
RM0312E	12	10	100



**EQUAL STRAIGHT
CONNECTOR**

PART NO.	TUBE OD	BAG QTY	BOX QTY
RM0404E	4	10	500
RM0405E	5	10	500
RM0406E	6	10	500
RM0408E	8	10	300
RM0410E	10	10	200
RM0412E	12	10	100



EQUAL ELBOW

PART NO.	TUBE OD	BAG QTY	BOX QTY
PM0304E	4	10	500
PM0305E	5	10	500
PM0306E	6	10	400
PM0308E	8	10	300
PM0310E	10	10	200
PM0312E	12	10	100



**REDUCING ELBOW
CONNECTOR**

PART NO.	TUBE OD	TUBE OD	BAG QTY	BOX QTY
PM210604E	6	- 4	10	400
PM210804E	8	- 4	10	300
PM210806E	8	- 6	10	200
PM211004E	10	- 4	10	200
PM211006E	10	- 6	10	200
PM211008E	10	- 8	10	200
PM211208E	12	- 8	10	100
PM211210E	12	- 10	10	100



STEM ELBOW

PART NO.	STEM OD	TUBE OD	BAG QTY	BOX QTY
PM220404E	4	- 4	10	500
PM220505E	5	- 5	10	500
PM220606E	6	- 6	10	500
PM220808E	8	- 8	10	400
PM221010E	10	- 10	10	200
PM221212E	12	- 12	10	100



SWIVEL ELBOW
SUPER THREAD

PART NO.	TUBE OD	SUPER THREAD	BAG QTY	BOX QTY
RM090411	4 x	1/8	10	500
RM090412	4 x	1/4	10	200
RM090611	6 x	1/8	10	400
RM090612	6 x	1/4	10	400
RM090811	8 x	1/8	10	400
RM090812	8 x	1/4	10	300
RM091012	10 x	1/4	10	200
RM091013	10 x	3/8	10	200
RM091213	12 x	3/8	10	100
RM091214	12 x	1/2	10	100

With integral seal. Thread can be used with BSP, BSPT, NPT, PF and PT.



For sizes
15mm - 28mm
see pages 5 - 6

For a Technical Specification see page 20.

John Guest®

PNEUMATICS Metric Size Fittings



SWIVEL ELBOW
METRIC THREAD

PART NO.	TUBE OD	METRIC THREAD	BAG QTY	BOX QTY
RM0904M5	4 x	M5	10	500
RM0906M5	6 x	M5	10	500



SWIVEL ELBOW
BSP THREAD

PART NO.	TUBE OD	THREAD BSP	BAG QTY	BOX QTY
MM090411	4 x	1/8	10	500
MM090611	6 x	1/8	10	400
MM090612	6 x	1/4	10	400
MM090812	8 x	1/4	10	300

With plastic body, brass parallel thread, and 'O' ring thread seal.



SWIVEL ELBOW
BSP THREAD

PART NO.	STEM OD	THREAD BSP	BOX QTY
PM090411E	4 x	1/8	400
PM090412E	4 x	1/4	200
PM090511E	5 x	1/8	400
PM090512E	5 x	1/4	200
PM090611E	6 x	1/8	200
PM090612E	6 x	1/4	200
PM090811E	8 x	1/8	200
PM090812E	8 x	1/4	200
PM090813E	8 x	3/8	200
PM091012E	10 x	1/4	100
PM091013E	10 x	3/8	100
PM091014E	10 x	1/2	100
PM091213E	12 x	3/8	50
PM091214E	12 x	1/2	50



SWIVEL ELBOW
BSPT THREAD

PART NO.	TUBE OD	THREAD BSPT	BOX QTY
PM090401E	4 x	1/8	400
PM090402E	4 x	1/4	200
PM090501E	5 x	1/8	400
PM090502E	5 x	1/4	200
PM090601E	6 x	1/8	200
PM090602E	6 x	1/4	200
PM090801E	8 x	1/8	200
PM090802E	8 x	1/4	200
PM090803E	8 x	3/8	200
PM091002E	10 x	1/4	100
PM091003E	10 x	3/8	100
PM091004E	10 x	1/2	100
PM091203E	12 x	3/8	50
PM091204E	12 x	1/2	50



EQUAL TEE

PART NO.	TUBE OD	BAG QTY	BOX QTY
RM0204E	4	10	500
RM0205E	5	10	300
RM0206E	6	10	300
RM0208E	8	10	200
RM0210E	10	10	100
RM0212E	12	10	50



EQUAL TEE

PART NO.	TUBE OD	BAG QTY	BOX QTY
PM0204E	4	10	400
PM0205E	5	10	400
PM0206E	6	10	300
PM0208E	8	10	200
PM0210E	10	10	100
PM0212E	12	10	50



SWIVEL TEE
CENTRE LEG BSP THREAD

PART NO.	TUBE OD	THREAD BSP	BOX QTY
PM100411E	4 x	1/8	200
PM100412E	4 x	1/4	200
PM100511E	5 x	1/8	200
PM100512E	5 x	1/4	200
PM100611E	6 x	1/8	200
PM100612E	6 x	1/4	200
PM100811E	8 x	1/8	100
PM100812E	8 x	1/4	100
PM100813E	8 x	3/8	100
PM101012E	10 x	1/4	100
PM101013E	10 x	3/8	100
PM101014E	10 x	1/2	50
PM101213E	12 x	3/8	50
PM101214E	12 x	1/2	50



SWIVEL TEE
CENTRE LEG BSPT THREAD

PART NO.	TUBE OD	THREAD BSPT	BOX QTY
PM100401E	4 x	1/8	200
PM100402E	4 x	1/4	200
PM100501E	5 x	1/8	200
PM100502E	5 x	1/4	200
PM100601E	6 x	1/8	200
PM100602E	6 x	1/4	200
PM100801E	8 x	1/8	100
PM100802E	8 x	1/4	100
PM100803E	8 x	3/8	100
PM101002E	10 x	1/4	100
PM101003E	10 x	3/8	100
PM101004E	10 x	1/2	100
PM101203E	12 x	3/8	50
PM101204E	12 x	1/2	50



SWIVEL MALE RUN TEE
BSP THREAD

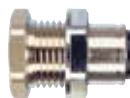
PART NO.	TUBE OD	THREAD BSP	BOX QTY
PM110411E	4 x	1/8	200
PM110412E	4 x	1/4	200
PM110511E	5 x	1/8	200
PM110512E	5 x	1/4	200
PM110611E	6 x	1/8	200
PM110612E	6 x	1/4	200
PM110811E	8 x	1/8	100
PM110812E	8 x	1/4	100
PM110813E	8 x	3/8	100
PM111012E	10 x	1/4	100
PM111013E	10 x	3/8	100
PM111014E	10 x	1/2	50
PM111213E	12 x	3/8	50
PM111214E	12 x	1/2	50



SWIVEL MALE RUN TEE
BSPT THREAD

PART NO.	TUBE OD	THREAD BSPT	BOX QTY
PM110401E	4 x	1/8	200
PM110402E	4 x	1/4	200
PM110501E	5 x	1/8	200
PM110502E	5 x	1/4	200
PM110601E	6 x	1/8	200
PM110602E	6 x	1/4	200
PM110801E	8 x	1/8	100
PM110802E	8 x	1/4	100
PM110803E	8 x	3/8	100
PM111002E	10 x	1/4	100
PM111003E	10 x	3/8	100
PM111004E	10 x	1/2	100
PM111203E	12 x	3/8	50
PM111204E	12 x	1/2	50

Speedfit® Air Products



BRASS BULKHEAD ADAPTOR

PART NO.	TUBE OD	BAG QTY	BOX QTY
RM070612	6	10	200
RM070812	8	10	200



BULKHEAD CONNECTOR

PART NO.	TUBE OD	BAG QTY	BOX QTY
RM1206	6	10	200
RM1208	8	10	200



BULKHEAD CONNECTOR

PART NO.	TUBE OD	BAG QTY	BOX QTY
PM1204E	4	10	200
PM1205E	5	10	200
PM1206E	6	10	200
PM1208E	8	10	100
PM1210E	10	10	100
PM1212E	12	5	50



REDUCER

PART NO.	STEM OD	TUBE OD	BAG QTY	BOX QTY
PM060504E	5	4	10	500
PM060604E	6	4	10	500
PM060605E	6	5	10	500
PM060804E	8	4	10	500
PM060805E	8	5	10	500
PM060806E	8	6	10	500
PM061006E	10	6	10	400
PM061008E	10	8	10	400
PM061208E	12	8	10	300
PM061210E	12	10	10	250

Larger size Reducers are shown in our compressed air section



ENLARGER

PART NO.	TUBE OD	STEM OD	BAG QTY	BOX QTY
PM130405E	5	4	10	500



STEM ADAPTOR SUPERTHREAD

PART NO.	TUBE OD	SUPER THREAD	BOX QTY
RM050612	6	x 1/4	500
RM050812	8	x 1/4	500

With integral seal. Thread can be used with BSP, BSPT, NPT, PF and PT.



STEM ADAPTOR METRIC THREAD

PART NO.	TUBE OD	METRIC THREAD	BOX QTY
RM0504M5	4	x M5	500



STEM ADAPTOR BSP THREAD

PART NO.	STEM OD	THREAD BSP	BAG QTY	BOX QTY
PM050411E	4	x 1/8	10	500
PM050412E	4	x 1/4	10	500
PM050511E	5	x 1/8	10	500
PM050512E	5	x 1/4	10	500
PM050611E	6	x 1/8	10	500
PM050612E	6	x 1/4	10	500
PM050811E	8	x 1/8	10	500
PM050812E	8	x 1/4	10	500
PM050813E	8	x 3/8	10	300
PM051012E	10	x 1/4	10	300
PM051013E	10	x 3/8	10	300
PM051014E	10	x 1/2	10	200
PM051213E	12	x 3/8	10	200
PM051214E	12	x 1/2	10	150



STEM ADAPTOR BSPT THREAD

PART NO.	STEM OD	THREAD BSPT	BAG QTY	BOX QTY
PM050401E	4	x 1/8	10	500
PM050402E	4	x 1/4	10	500
PM050501E	5	x 1/8	10	500
PM050502E	5	x 1/4	10	500
PM050601E	6	x 1/8	10	500
PM050602E	6	x 1/4	10	500
PM050801E	8	x 1/8	10	500
PM050802E	8	x 1/4	10	500
PM050803E	8	x 3/8	10	300
PM051002E	10	x 1/4	10	300
PM051003E	10	x 3/8	10	300
PM051004E	10	x 1/2	10	200
PM051203E	12	x 3/8	10	200
PM051204E	12	x 1/2	10	150



TWO-WAY DIVIDER

PART NO.	TUBE OD	BAG QTY	BOX QTY
RM2306E	6	10	300
RM2308E	8	10	250
RM2312E	12	10	50



TUBE TO HOSE STEM

PART NO.	STEM OD	HOSE ID	BAG QTY	BOX QTY
PM250604E	6	- 4	10	500
PM250806E	8	- 6	10	500
PM251008E	10	- 8	10	300



FEMALE ADAPTOR

PART NO.	TUBE OD	THREAD BSP	BAG QTY	BOX QTY
* PM450411E	4	x 1/8	10	500
PM450611E	6	x 1/8	10	500
* PM450612E	6	x 1/4	10	300
* PM450812E	8	x 1/4	10	300
* PM450813E	8	x 3/8	10	200
* PM451015FE	10	x 5/8	10	100
* PM451215FE	12	x 5/8	10	150

*With thread seal. Other size no seal.



TWO-WAY DIVIDER

PART NO.	TUBE OD	BAG QTY	BOX QTY
PM2304E	4	10	300
PM2308E	8	10	100
PM2310E	10	10	100

Swivel Elbows/Tees can be made up by using an Equal Elbow (page 8), Equal Tee (page 9) and the appropriate Stem Adaptor (page 10). Pre-assembled Swivels may be purchased from John Guest at a higher price as listed. we regret that orders for below 400 of any individual Swivels cannot be accepted.



For sizes
15mm - 28mm
see pages 5 - 6

For a Technical Specification see page 20.

Banjo Flow Control

Banjo Flow Controls are designed for installation directly into cylinder ports to give precise control. They regulate the speed of pneumatic cylinders and other actuators.

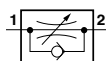
John Guest Controls provide a neat compact assembly which can be orientated to a suitable position for the circuit arrangement prior to tightening. The design offers especially precise adjustment through the control needle which is captive within its housing.

Suitable for both soft metal and plastic tubing.

Technical Specifications

Temperature Range 5°C - 70°C
Working Pressure Range 0.5 Bar to 10 Bar

ISO 1219-1 : 1991



Materials used

Acetal Copolymer, Brass, Stainless Steel and Nitrile.

Filtration

Air supply should be filtered to 50 micron.

Typical Response Curve

Response curve for Banjo Flow Control with Screwdriver slot.
 Pattern No. BFC360611E

1 scfm = 28.3 litres/min. or 28317 cc/min. @ 1 atmosphere discharge



BANJO FLOW CONTROL MANUAL ADJUSTMENT

PART NO.	TUBE OD	THREAD	BAG QTY	BOX QTY
CFM3604M5E	4 x	M5	1	200
CFM360411E	4 x	1/8 BSP	1	100
CFM360611E	6 x	1/8 BSP	1	100
CFM360612E	6 x	1/4 BSP	1	100
CFM360812E	8 x	1/4 BSP	1	100



BANJO FLOW CONTROL SCREWDRIVER SLOT

PART NO.	TUBE OD	THREAD	BAG QTY	BOX QTY
BFC3604M5E	4 x	M5	1	200
BFC360411E	4 x	1/8 BSP	1	100
BFC360611E	6 x	1/8 BSP	1	100
BFC360612E	6 x	1/4 BSP	1	50
BFC360812E	8 x	1/4 BSP	1	100
BFC361013E	10 x	3/8 BSP	1	50
BFC361214E	12 x	1/2 BSP	1	50



MINIATURE BANJO FLOW CONTROL SCREWDRIVER SLOT

PART NO.	TUBE OD	THREAD	BAG QTY	BOX QTY
LM1503M3E	3 x	M3	10	1000

Miniature Fittings

A new range of fittings especially designed for miniature pneumatics applications.

LM fittings are suitable for use with plastic (Polyethylene, Nylon and Polyurethane) and soft metal (copper and mild steel) tubes with an outside diameter of 4mm +0.05/- 0.07. The tube to have a smooth outer surface and be free from burrs.

Tube inserts should be used for soft or thin wall tubing or when using Polyurethane tube above 10 Bar to a maximum of 16 Bar.

M3 and M5 threaded ends are designed to be hand tightened. They should not be tightened above the maximum torque figures shown in our Technical Specification.



STRAIGHT ADAPTOR / METRIC THREAD

PART NO.	TUBE OD	THREAD	BAG QTY	BOX QTY
LM0103M3	3 x	M3	10	500
LM0104M3	4 x	M3	10	300
LM0104M5	4 x	M5	10	300



STRAIGHT ADAPTOR / SUPERTHREAD

PART NO.	TUBE OD	SUPER THREAD	BAG QTY	BOX QTY
LM010411	4 x	1/8	10	300

With integral seal. Thread can be used with BSP, BSPT, NPT, PF and PT.



EQUAL STRAIGHT CONNECTOR

PART NO.	TUBE OD	BAG QTY	BOX QTY
LM0403E	3	10	300
LM0404E	4	10	300



EQUAL ELBOW

PART NO.	TUBE OD	BAG QTY	BOX QTY
LM0303E	3	10	300
LM0304E	4	10	300



SWIVEL ELBOW / METRIC THREAD

PART NO.	TUBE OD	THREAD	BAG QTY	BOX QTY
LM0903M3	3	x M3	10	500
LM0904M3	4	x M3	10	500
LM0904M5	4	x M5	10	500



EQUAL TEE

PART NO.	TUBE OD	BAG QTY	BOX QTY
LM0203E	3	10	200
LM0204E	4	10	200

For a Technical Specification see page 20.

Pneumatics Imperial Size Fittings

Pneumatic Imperial fittings offered in sizes 5/32" to 5/8" are manufactured in grey acetal copolymer, making them especially suitable for applications involving foodstuffs and potable liquids. They are however equally suitable for air and inert gases and can be used on N₂/CO₂ (installed in accordance with The British Beer and Pub Association Code of Practice) mixed gas dispense lines and in pneumatic applications and vacuum.



STRAIGHT ADAPTOR
BSPT THREAD

PART NO.	TUBE OD	THREAD BSPT	BAG QTY	BOX QTY
PM010401S	5/32 x 1/8		10	500
PM010402S	5/32 x 1/4		10	500
PI010601S	3/16 x 1/8		10	500
PI010602S	3/16 x 1/4		10	500
PI010801S	1/4 x 1/8		10	500
PI010802S	1/4 x 1/4		10	400
PM010801S	5/16 x 1/8		10	400
PM010802S	5/16 x 1/4		10	400
PM010803S	5/16 x 3/8		10	300
PI011202S	3/8 x 1/4		10	250
PI011203S	3/8 x 3/8		10	250
PI011603S	1/2 x 3/8		10	150
PI011604S	1/2 x 1/2		10	150



STRAIGHT ADAPTOR
NPTF THREAD

PART NO.	TUBE OD	THREAD NPTF	BAG QTY	BOX QTY
PM010421S	5/32 x 1/8		10	500
PM010422S	5/32 x 1/4		10	500
PI010621S	3/16 x 1/8		10	500
PI010821S	1/4 x 1/8		10	500
PI010822S	1/4 x 1/4		10	400
PI010823S	1/4 x 3/8		10	300
PM010821S	5/16 x 1/8		10	400
PM010822S	5/16 x 1/4		10	400
PM010823S	5/16 x 3/8		10	300
PI011221S	3/8 x 1/8		10	250
PI011222S	3/8 x 1/4		10	250
PI011223S	3/8 x 3/8		10	250
PI011224S	3/8 x 1/2		10	200
PI011623S	1/2 x 3/8		10	150
PI011624S	1/2 x 1/2		10	150
PI012026S	5/8 x 3/4		10	100



EQUAL ELBOW

PART NO.	TUBE OD	BAG QTY	BOX QTY
PM0304S	5/32	10	500
PI0306S	3/16	10	500
PI0308S	1/4	10	400
PM0308S	5/16	10	300
PI0312S	3/8	10	200
PI0316S	1/2	10	100



STRAIGHT ADAPTOR
BSP THREAD

PART NO.	TUBE OD	THREAD BSP	BAG QTY	BOX QTY
PI010812S	1/4 x 1/4		10	250
PI011212S	3/8 x 1/4		10	250
PI011213S	3/8 x 3/8		10	250
PI011613S	1/2 x 3/8		10	150

For use with spot face ports.



EQUAL STRAIGHT CONNECTOR

PART NO.	TUBE OD	BOX QTY	BAG QTY
PM0404S	5/32	500	10
PI0406S	3/16	500	10
PI0408S	1/4	400	10
PM0408S	5/16	300	10
PI0412S	3/8	200	10
PI0416S	1/2	100	10



REDUCING STRAIGHT CONNECTOR

PART NO.	TUBE OD	TUBE OD	BAG QTY	BOX QTY
PI200806S	1/4	- 3/16	10	200
PM200804S	5/16	- 5/32	10	300
PI201006S	5/16	- 3/16	10	200
PI201008S	5/16	- 1/4	10	200
PI201206S	3/8	- 3/16	10	200
PI201208S	3/8	- 1/4	10	200
PI201210S	3/8	- 5/16	10	200
PI201608S	1/2	- 1/4	10	200
PI201610S	1/2	- 5/16	10	100
PI201612S	1/2	- 3/8	10	100



REDUCING ELBOW

PART NO.	TUBE OD	TUBE OD	BAG QTY	BOX QTY
PM210804S	5/16	- 5/32	10	300
PI211006S	5/16	- 3/16	10	200
PI211008S	5/16	- 1/4	10	200
PI211206S	3/8	- 3/16	10	200
PI211208S	3/8	- 1/4	10	200
PI211210S	3/8	- 5/16	10	200
PI211610S	1/2	- 5/16	10	100
PI211612S	1/2	- 3/8	10	100



STRAIGHT ADAPTOR
BSP THREAD

PART NO.	TUBE OD	THREAD BSP	BAG QTY	BOX QTY
NCPI011211S	3/8 x 1/8		10	200
NCPI011212S	3/8 x 1/4		10	250

With special large seal for use with chamfered face ports.



STEM ELBOW

PART NO.	STEM OD	TUBE OD	BAG QTY	BOX QTY
PM220404S	5/32	- 5/32	10	500
PI220606S	3/16	- 3/16	10	500
PI220808S	1/4	- 1/4	10	500
PM220808S	5/16	- 5/16	10	400
PI221206S	3/8	- 3/16	10	300
PI221208S	3/8	- 1/4	10	300
PI221210S	3/8	- 5/16	10	200
PI221212S	3/8	- 3/8	10	200
PI221616S	1/2	- 1/2	10	100

Speedfit® Air Products



RIGID ELBOW
NPTF THREAD

PART NO.	TUBE OD	THREAD NPTF	BAG QTY	BOX QTY
PI480821S	1/4	x 1/8	10	500
PI480822S	1/4	x 1/4	10	400
PI480823S	1/4	x 3/8	10	300
PI481022S	5/16	x 1/4	10	300
PI481023S	5/16	x 3/8	10	300
PI481222S	3/8	x 1/4	10	200
PI481223S	3/8	x 3/8	10	200
PI482024S	5/8	x 1/2	10	100



SWIVEL ELBOW
BSPT THREAD

PART NO.	TUBE OD	THREAD BSPT	BAG QTY	BOX QTY
PI090601S	3/16	x 1/8	10	200
PI090801S	1/4	x 1/8	10	200
PI090802S	1/4	x 1/4	10	200
PM090801S	5/16	x 1/8	10	200
PM090802S	5/16	x 1/4	10	200
PM090803S	5/16	x 3/8	10	200
PI091202S	3/8	x 1/4	10	100
PI091203S	3/8	x 3/8	10	100
PI091603S	1/2	x 3/8	10	50
PI091604S	1/2	x 1/2	10	50



SWIVEL ELBOW
NPTF THREAD

PART NO.	TUBE OD	THREAD NPTF	BAG QTY	BOX QTY
PM090421S	5/32	x 1/8	10	400
PM090422S	5/32	x 1/4	10	200
PI090621S	3/16	x 1/8	10	200
PI090821S	1/4	x 1/8	10	200
PI090822S	1/4	x 1/4	10	200
PM090821S	5/16	x 1/8	10	200
PM090822S	5/16	x 1/4	10	200
PM090823S	5/16	x 3/8	10	200
PI091222S	3/8	x 1/4	10	100
PI091223S	3/8	x 3/8	10	100
PI091623S	1/2	x 3/8	10	50
PI091624S	1/2	x 1/2	10	50



EQUAL TEE

PART NO.	TUBE OD	BAG QTY	BOX QTY
PM0204S	5/32	10	400
PI0206S	3/16	10	400
PI0208S	1/4	10	300
PM0208S	5/16	10	200
PI0212S	3/8	10	100
PI0216S	1/2	10	50



REDUCING TEE

PART NO.	TUBE OD ENDS	TUBE OD BRANCH	BAG QTY	BOX QTY
PI301208S	3/8	- 1/4	10	150
PI301612S	1/2	- 3/8	10	50



SWIVEL BRANCH TEE
BSPT THREAD

PART NO.	TUBE OD	THREAD BSPT	BAG QTY	BOX QTY
PI100601S	3/16	x 1/8	10	200
PI100801S	1/4	x 1/8	10	200
PI100802S	1/4	x 1/4	10	200
PM100801S	5/16	x 1/8	10	100
PM100802S	5/16	x 1/4	10	100
PM100803S	5/16	x 3/8	10	100
PI101202S	3/8	x 1/4	10	100
PI101203S	3/8	x 3/8	10	100
PI101603S	1/2	x 3/8	5	50
PI101604S	1/2	x 1/2	5	50



SWIVEL BRANCH TEE
NPTF THREAD

PART NO.	TUBE OD	THREAD NPTF	BAG QTY	BOX QTY
PM100421S	5/32	x 1/8	10	200
PM100422S	5/32	x 1/4	10	200
PI100621S	3/16	x 1/8	10	200
PI100821S	1/4	x 1/8	10	200
PI100822S	1/4	x 1/4	10	200
PM100821S	5/16	x 1/8	10	100
PM100822S	5/16	x 1/4	10	100
PM100823S	5/16	x 3/8	10	100
PI101222S	3/8	x 1/4	10	100
PI101223S	3/8	x 3/8	10	100
PI101623S	1/2	x 3/8	5	50
PI101624S	1/2	x 1/2	5	50



SWIVEL MALE RUN TEE
BSPT THREAD

PART NO.	TUBE OD	THREAD BSPT	BAG QTY	BOX QTY
PI110601S	3/16	x 1/8	10	200
PI110801S	1/4	x 1/8	10	200
PI110802S	1/4	x 1/4	10	200
PM110801S	5/16	x 1/8	10	100
PM110802S	5/16	x 1/4	10	100
PM110803S	5/16	x 3/8	10	100
PI111202S	3/8	x 1/4	10	100
PI111203S	3/8	x 3/8	10	100
PI111603S	1/2	x 3/8	5	50
PI111604S	1/2	x 1/2	5	50



SWIVEL MALE RUN TEE
NPTF THREAD

PART NO.	TUBE OD	THREAD NPTF	BAG QTY	BOX QTY
PM110421S	5/32	x 1/8	Not Available	
PM110422S	5/32	x 1/4	Not Available	
PI110621S	3/16	x 1/8	10	200
PI110821S	1/4	x 1/8	10	200
PI110822S	1/4	x 1/4	10	200
PM110821S	5/16	x 1/8	Not Available	
PM110822S	5/16	x 1/4	10	100
PM110823S	5/16	x 3/8	Not Available	
PI111222S	3/8	x 1/4	10	100
PI111223S	3/8	x 3/8	10	100
PI111623S	1/2	x 3/8	Not Available	
PI111624S	1/2	x 1/2	Not Available	



FEMALE ADAPTOR
BSPT THREAD - FLAT END

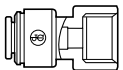
PART NO.	TUBE OD	THREAD BSP	BAG QTY	BOX QTY
PI451014FS	5/16	x 1/2	10	150
PI451015FS	5/16	x 5/8	10	150
PI451213S	3/8	x 3/8	10	150
PI451214FS	3/8	x 1/2	10	150
PI451215FS	3/8	x 5/8	10	150
PI451613S	1/2	x 3/8	10	150
PI451615FS	1/2	x 5/8	10	150

Swivel Tees/Elbows can be made up by using an Equal Elbow (page 13), Equal Tee (page 14) and the appropriate Stem Adaptor (page 15). Pre-assembled Swivels may be purchased from John Guest at a higher price as listed. We regret that orders for below 400 of any individual Swivels cannot be accepted.

For a Technical Specification see page 20.

John Guest®

Pneumatics Imperial Size Fittings



FEMALE ADAPTOR
NPTF THREAD

PART NO.	TUBE OD	THREAD NPTF	BAG QTY	BOX QTY
PI450822S	1/4	x 1/4	10	400
PI451222S	3/8	x 1/4	10	250



THREE WAY DIVIDER

PART NO.	TUBE OD INLET	TUBE OD OUTLET	BAG QTY	BOX QTY
PI491612S	1/2	- 3/8	10	50
PI491616S*	1/2	- 1/2	5	40



TWO-WAY DIVIDER

PART NO.	TUBE OD	BAG QTY	BOX QTY
PI2308S	1/4	10	150
PM2308S	5/16	10	100
PI2312S	3/8	10	100
PI2316S	1/2	5	100



UNEQUAL TWO-WAY DIVIDER

PART NO.	TUBE OD INLET	TUBE OD OUTLET	BAG QTY	BOX QTY
PI241210S	3/8	- 5/16	10	100



BULKHEAD CONNECTOR

PART NO.	TUBE OD	BAG QTY	BOX QTY
PM1204S	5/32	10	200
PI1206S	3/16	10	200
PI1208S	1/4	10	200
PM1208S	5/16	10	100
PI1212S	3/8	10	100
PI1216S	1/2	5	50



REDUCING BULKHEAD CONNECTOR

PART NO.	TUBE OD	TUBE OD	BAG QTY	BOX QTY
PI121208S	3/8	- 1/4	10	150



STEM ADAPTOR
BSPT THREAD

PART NO.	STEM OD	THREAD BSPT	BAG QTY	BOX QTY
PI050601S	3/16	x 1/8	10	500
PI050801S	1/4	x 1/8	10	500
PI050802S	1/4	x 1/4	10	500
PM050801S	5/16	x 1/8	10	500
PM050802S	5/16	x 1/4	10	500
PM050803S	5/16	x 3/8	10	300
PI051202S	3/8	x 1/4	10	300
PI051203S	3/8	x 3/8	10	300
PI051603S	1/2	x 3/8	10	200
PI051604S	1/2	x 1/2	10	150



STEM ADAPTOR
BSP THREAD

PART NO.	STEM OD	THREAD BSP	BAG QTY	BOX QTY
PM050812S	5/16	x 1/4	10	500
PI051212S	3/8	x 1/4	10	300
PI051213S	3/8	x 3/8	10	300



STEM ADAPTOR
NPTF THREAD

PART NO.	STEM OD	THREAD NPTF	BAG QTY	BOX QTY
PM050421S	5/32	x 1/8	10	500
PM050422S	5/32	x 1/4	10	500
PI050621S	3/16	x 1/8	10	500
PI050821S	1/4	x 1/8	10	500
PI050822S	1/4	x 1/4	10	500
PI050823S	1/4	x 3/8	10	300
PM050821S	5/16	x 1/8	10	500
PM050822S	5/16	x 1/4	10	500
PM050823S	5/16	x 3/8	10	300
PI051222S	3/8	x 1/4	10	300
PI051223S	3/8	x 3/8	10	300
PI051623S	1/2	x 3/8	10	150
PI051624S	1/2	x 1/2	10	150



REDUCER

PART NO.	STEM OD	TUBE OD	BAG QTY	BOX QTY
PI060605S	3/16	- 5/32	10	500
PI061006S	5/16	- 3/16	10	500
PI061008S	5/16	- 1/4	10	500
PI061206S	3/8	- 3/16	10	500
PI061208S	3/8	- 1/4	10	400
PI061210S	3/8	- 5/16	10	400
PI061610S	1/2	- 5/16	10	300
PI061612S	1/2	- 3/8	10	250



ENLARGER

PART NO.	STEM OD	TUBE OD	BAG QTY	BOX QTY
PI131012S	5/16	- 3/8	10	250
PI131216S	3/8	- 1/2	10	200



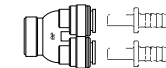
OFFSET CONNECTOR

PART NO.	TUBE OD	TUBE OD	BAG QTY	BOX QTY
NC641	1/2	- 5/16	10	200



CROSS

PART NO.	TUBE OD	BAG QTY	BOX QTY
PI4712S	3/8	10	100



U-BEND

PART NO.	TUBE OD	BAG QTY	BOX QTY
PIUB12S	3/8	10	100
PIUB16S	1/2	10	50

The U-Bend is offered for 1/2 inch OD tube sizes. Existing 1/2 inch ID lines can be accommodated by using a standard Tube to Hose Connector.

Speedfit® Air Products

Accessories



END STOP

PART NO.	TUBE OD	BAG QTY	BOX QTY
PI4608S	1/4	10	500
PI4612S	3/8	10	500



PLUG

PART NO.	STEM OD	BAG QTY	BOX QTY
PM0804S	5/32	10	1000
PI0806S	3/16	10	1000
PI0808S	1/4	10	500
PM0808S	5/16	10	500
PI0812S	3/8	10	400
PI0816S	1/2	10	300



TUBE TO HOSE STEM

PART NO.	STEM OD	HOSE ID	BAG QTY	BOX QTY
PI250806S	1/4	- 3/16	10	500
PI250808S	1/4	- 1/4	10	500
PI250810S	1/4	- 5/16	10	500
PI251006S	5/16	- 3/16	10	500
PI251008S	5/16	- 1/4	10	500
PM250808S	5/16	- 5/16	10	500
PI251012S	5/16	- 3/8	10	400
PI251208S	3/8	- 1/4	10	400
PI251210S	3/8	- 5/16	10	400
PI251212S	3/8	- 3/8	10	400
PI251216S	3/8	- 1/2	10	300
PI251612S	1/2	- 3/8	10	300
PI251616S	1/2	- 1/2	10	200



TUBE TO HOSE ELBOW

PART NO.	STEM OD	HOSE ID	BAG QTY	BOX QTY
PI290808S	1/4	- 1/4	10	500
PI290810S	1/4	- 5/16	10	500
PI291008S	5/16	- 1/4	10	500
PM290808S	5/16	- 5/16	10	500
PI291208S	3/8	- 1/4	10	400
PI291210S	3/8	- 5/16	10	400



COLLET COVERS

The slip-on Collet Cover shown in the illustration prevents accidental removal or tampering with tubing. Tubing can be inserted with the Collet Cover already attached to the fittings or the cover can slide into position afterwards. The cover is easily removed when required and comes in a variety of colours for colour coding.

Colours available - Suffix indicates colours

E = Black Y = Yellow B = Blue
R = Red S = Grey G = Green

INCH SIZES

PART NO.	TUBE OD	BAG QTY	BOX QTY
PM1904S	5/32	10	1000
PI1906S	3/16	10	1000
PI1908S	1/4	10	1000
PM1908S	5/16	10	1000
PI1912S	3/8	10	500
PI1916S	1/2	10	500

Please indicate by suffix, colour required or grey will be supplied.

METRIC SIZES

PART NO.	TUBE OD	BAG QTY	BOX QTY
PM1904E	4	10	1000
PM1905E	5	10	1000
PM1906E	6	10	1000
PM1908E	8	10	1000
PM1910E	10	10	500
PM1912E	12	10	500
PM1915E	15	100	400
PM1918E	18	10	200
PM1922E	22	50	200

Please indicate by suffix, colour required or black will be supplied.
15mm to 22mm sizes available in black as standard, white, red, or blue.

For a Technical Specification see page 20.

Accessories cont.



FLOW BEND CLIP

PART NO.	TUBE OD	BOX QTY
PM2608S	8mm/5/16	300
PM2610S	10mm/3/8	200

Designed to support tube and eliminate kinking.



TUBE INSERT

PART NO.	TUBE OD	TUBE ID	BOX QTY
TSI250S	3/8	1/4	1,000
TSI312S	7/16	5/16	2,500
TSI375S	1/2	3/8	500

PART NO.	TUBE OD	TUBE ID	BOX QTY
TSM1209S	12mm	9mm	1000



TUBE INSERT

PART NO.	TUBE OD	TUBE ID	BAG QTY	BOX QTY
TSM10N	10	7	50	1,000
TSM1209S	12	9	-	1,000
TSM15N	15	11.5	50	500



TUBE INSERT

PART NO.	TUBE OD	BAG QTY	BOX QTY
LMTS04	4	1,000	15,000

Tube inserts should be used for soft wall tubing or when using polyurethane tube above 10 Bar to a maximum of 16 Bar.



PLUG

PART NO.	STEM OD	COLOUR	BAG QTY	BOX QTY
PM0804R	4	RED	10	1,000
PM0805R	5	RED	10	1,000
PM0806R	6	RED	10	500
PM0808R	8	RED	10	500
PM0810R	10	RED	10	400
PM0812R	12	RED	10	300
PM0815E	15	BLACK	10	200
PM0818E	18	BLACK	10	100
PM0822E	22	BLACK	10	100
PM0828E	28	BLACK	10	50

8mm size also available in black Part No. PM0808E.



COLLET LOCKING TOOL

PART NO.	SIZE	BOX QTY
ICLT/2	3/16 to 1/2	50



TUBE CUTTER

PART NO.	BOX QTY
TSNIP	50
BLADES only	300

Suitable for up to 12mm tube.



PIPE CUTTER

PART NO.	BOX QTY
JG-TS	30

Suitable for up to 22mm tube.



HEAVY DUTY PIPE CUTTER

PART NO.	PACK QTY
HDC	1

BLADE-HDC ONLY

For up to and including 28mm pipe



LOCKING CLIP

PART NO.	TUBE OD	BAG QTY	BOX QTY
PIC1808R	1/4	100	5,000
PMC1808R	5/16	100	8,000
PIC1812R	3/8	100	1,000
PIC1816R	1/2	100	2,000
PMC1815R	15mm	100	2,000

Secures the collet in its position to prevent an accidental disconnection of the tube.



Cartridges

A cost effective way of incorporating a push-fit connection into a wide variety of plastic and brass housings.



PLASTIC HALF CARTRIDGE / INCH SIZE

Grey Plastic Body, Nitrile 'O' Ring, Grey Collet.



PART NO.	TUBE OD	BOX QTY
PM2804S	5/32"	1000
PI2806S	3/16"	1000
PI2808S	1/4"	1000
PM2808S	5/16"	1000
PI2812S	3/8"	1000
PI2816S	1/2"	500

For 2 'O' Ring use Suffix 2 ie PI2806S2.



1/4", 5/16" and 3/8" Plastic Half Cartridges are available in other colours in min 5000 lots at the same price as standard product.

Please use suffix R, W or B eg.



PI2812S-R Grey Body, Red Collet
PI2812S-W Grey Body, White Collet
PI2812S-B Grey Body, Blue Collet
PI2812W White Body, White Collet
PI2812W-R White Body, Red Collet
PI2812W-B White Body, Blue Collet



These variations are also available with 2 'O' rings eg.

PI2812S2-W, PI2812S2-R, PI2812S2-B.
PI2812W2, PI2812W2-R, PI2812W2-B.

PLASTIC HALF CARTRIDGE / METRIC SIZE

Black Plastic Body, Nitrile 'O' Ring, Black Collet



PART NO.	TUBE OD	BOX QTY
PM2804E	4mm	1000
PM2805E	5mm	1000
PM2806E	6mm	1000
PM2808E	8mm	1000
PM2810E	10mm	1000
PM2812E	12mm	500
PM2815E	15mm	200

For 2 'O' Ring use Suffix 2 ie PM2806E2



PLASTIC CARTRIDGE - ASSEMBLY TOOL

PART NO.	FOR CARTRIDGE SIZE	BOX QTY
AST-3/16	3/16, 5/32", 4mm & 5mm	
AST-12	12mm	50
AST-15	15mm	50
AST-1/2	1/2"	50

Assembly Tools ease the cartridge insertion process. They can be adapted to fit a simple bench press.

METAL HALF CARTRIDGE / INCH SIZE

Brass Body, Nitrile 'O' Ring, Grey Collet



PART NO.	TUBE OD	BOX QTY
MM2804N	5/32"	1000
MI2806N	3/16"	1000
MI2808N	1/4"	1000
MM2808N	5/16"	1000
MI2812N	3/8"	1000
MI2816N	1/2"	500

For 2 'O' Ring use Suffix 2 ie MM2804N2

1/4" and 3/8" sizes also available with red, blue or white collet (Suffix R, B or W respectively).

1/2" size also available with red collet, Suffix R.

METAL HALF CARTRIDGE / METRIC SIZE

Brass Body, Nitrile 'O' Ring, Black collet on 5, 6, 10, 12, 15, & 18mm Grey collet 4 & 8mm



PART NO.	TUBE OD	BOX QTY
MM2804N	4mm	1000
MM2805N	5mm	1000
MM2806N	6mm	1000
MM2808N	8mm	1000
MM2810N	10mm	1000
MM2812N	12mm	500
MM2815N	15mm	300
MM2818N	18mm	200

For 2 'O' Ring use Suffix 2 ie MM2804N2

8mm also available with black collet
Part No. MM2808NE

MINIATURE HALF CARTRIDGE / METRIC SIZE

Brass Body, Nitrile 'O' Ring, Black Collet



PART NO.	TUBE OD	BOX QTY
LM2804N	4mm	1000

Miniature Half Cartridges have been designed to give an easy solution in providing a push-fit connection into miniature pneumatic equipment.



FULL CARTRIDGE METRIC SIZE

PART NO.	TUBE OD	BOX QTY
MM1404N	4mm	1000
MM1405N	5mm	1000
MM1406N	6mm	1000
MM1408N	8mm	1000
MM1410N	10mm	500
MM1412N	12mm	500

Full cartridges have black collets as standard.
4mm size is also available with
Green collet Part No. MM1404NG and
Red collet Part No. MM1404NR



MINIATURE FULL CARTRIDGE / METRIC SIZE

Brass Body, Nitrile 'O' Ring, Black Collet

PART NO.	TUBE OD	BOX QTY
LM1404N	4mm	1000

Complementing the existing Full Cartridge Range, this new product has been designed as an easy way of providing a push-fit connection in miniature pneumatic equipment.

A wider range of Cartridges is shown in our Cartridge Systems Catalogue.

As Cartridges are intended for use by Original Equipment Manufacturers, they are only supplied in bulk quantities.

For a Technical Specification see page 20.

LLDPE TUBE

John Guest Linear Low Density Polyethylene Tubing is suitable for a wide range of temperature and pressures, has a broad chemical compatibility and is made from non contaminating materials.

The tubing is suitable for pneumatics applications maximum pressure 10 Bar @ 20°C. At elevated temperatures, (50°C), mineral oil used in some systems will degrade LLDPE tube and therefore, LLDPE tube used in pneumatic circuits should be periodically checked and replaced if necessary.

Chemical Resistance

For use of LLDPE with chemicals or potentially aggressive liquids, please refer to our Technical Service Department.

NOTE: When using cleaning agents or other potentially aggressive liquids, please ensure compatibility with tubing and fittings. LLDPE is not recommended for mineral oils, gases and fuels or high pressure compressed air / pneumatic systems.

Exposure to Ultraviolet Light

Only black or blue tube should be installed in areas exposed to any light if biofilm growth is considered an issue. In this case other colours must be protected from exposure to light. Black tube is also UV stabilised and can be installed where exposed to direct sunlight (UV).

Tube Tolerances

1/4" to 1/2"	+0.001/-0.004mm
4mm	+0.05/-0.07mm
6mm to 12mm	+0.05/-0.10mm
15mm	+0.10/-0.10mm

4MM OD x 2.5MM ID - 100M COILS

PART NO.	COLOUR
PE-04025-0100M-N	Natural
PE-04025-0100M-B	Blue
PE-04025-0100M-R	Red
PE-04025-0100M-E	Black
PE-04025-0100M-W	White
PE-04025-0100M-G	Green
PE-04025-0100M-Y	Yellow
PE-04025-0100M-O	Orange

10MM OD x 7MM ID-100M COILS

PART NO.	COLOUR
PE-1007-100M-N	Natural
PE-1007-100M-B	Blue
PE-1007-100M-R	Red
PE-1007-100M-E	Black
PE-1007-100M-W	White
PE-1007-100M-G	Green
PE-1007-100M-Y	Yellow
PE-1007-100M-O	Orange

6MM OD x 4MM ID-100M COILS

PART NO.	COLOUR
PE-0604-0100M-N	Natural
PE-0604-0100M-B	Blue
PE-0604-0100M-R	Red
PE-0604-0100M-E	Black
PE-0604-0100M-W	White
PE-0604-0100M-Y	Yellow
PE-0604-0100M-G	Green
PE-0604-0100M-O	Orange

12MM OD x 9MM ID-100M COILS

PART NO.	COLOUR
PE-1209-100M-N	Natural
PE-1209-100M-B	Blue
PE-1209-100M-R	Red
PE-1209-100M-E	Black
PE-1209-100M-Y	Yellow
PE-1209-100M-W	White
PE-1209-100M-G	Green
PE-1209-100M-O	Orange

8MM OD x 6MM ID - 100M COILS

PART NO.	COLOUR
PE-0806-100M-N	Natural
PE-0806-100M-B	Blue
PE-0806-100M-E	Black
PE-0806-100M-W	White
PE-0806-100M-R	Red
PE-0806-100M-Y	Yellow
PE-0806-100M-G	Green
PE-0806-100M-O	Orange

15MM OD x 11.5MM ID-100M COILS

PART NO.	COLOUR
PE-15115-0100M-B	Blue
PE-15115-0100M-R	Red
PE-15115-0100M-G	Green

Minimum Order Quantities

Popular items highlighted in red are generally in stock and available in minimum order quantities of 2 coils. Other items may be subject to a longer lead time and are available in minimum order quantities of 50 coils.

Imperial size tube is also available, prices on application.

Speedfit® Air Products

Additional Information

New Products

Our fitting ranges are continually being added to and should you not see the fitting you require in our standard range, please contact our Customer Services Department on

(0044) (0)1895 449233.

Specials

We are pleased to consider your special requirements and do supply fittings in other materials and design details to meet particular needs. Details available on request.

Ordering Information

- 1 Fittings are priced individually, are usually bagged in 10's and supplied in our standard boxes.
- 2 Prices are exclusive of V.A.T.
- 3 Prices are Ex-works, carriage and packaging extra at cost.
- 4 Products sold in accordance with our general conditions of sale shown on page 22.
- 5 Customers requesting credit will need to complete John Guest Credit Application Forms. Credit may be refused or withdrawn at the sole discretion of John Guest.
- 6 For a Technical Specification see page 20.
- 7 John Guest fittings are patented in the United Kingdom and elsewhere. The company has a policy of continuous research and development and reserves the right to amend with out notice the specification and design of all products. Our fittings are designed to be used in accordance with our Technical Specification. John Guest or its associated companies cannot be held liable for accidents or damage resulting from misuse of fittings. We advise that John Guest be contacted for further information or special technical assistance should any use outside the technical guidelines stated in our catalogue be considered by the customer.

Product Selection and Installation

John Guest fittings and related products are specifically designed and manufactured by John Guest to the Technical Specifications set out in the John Guest Product Catalogues. All John Guest fittings and related products should be selected, installed, used and maintained in accordance with these Technical Specifications. It is the customer's / user's responsibility to ensure that John Guest fittings and related products are suitable for their intended applications, are properly installed and maintained and are used in accordance with the Technical Specifications. It is also the customer's / user's responsibility to provide its own customers with any relevant technical information about John Guest products it supplies them. (If you have any questions about our Technical Specifications, please contact us.)

Maintenance and Replacement Intervals

John Guest products generally require little maintenance but as a minimum we recommend routine visual inspection. Frequency of visual inspection will depend on severity of application and risk of failure. If after visual inspection John Guest products appear to be damaged, cracked, charred, discoloured, heat distorted, corroded or leaking they should be replaced.

Product life is affected by the severity of the application, the hostility of the working environment, and contact with aggressive chemicals or liquids. It is therefore, important that specific replacement intervals be considered by specifiers/users/customers based on previous service life or when failure could result in unacceptable downtime, damage or injury risk.

The company has a policy of continuous research and development and reserves the right to amend without notice the specification and design of all products illustrated in this catalogue. John Guest reserve the right to change the colour and shape of products. Photographs are for illustration purposes only.

LLDPE TUBING

1/4" OD 0.17" ID - 500FT COILS

PART NO.	COLOUR
PE-08-BI-0500F-N	Natural
PE-08-BI-0500F-B	Blue
PE-08-BI-0500F-R	Red
PE-08-BI-0500F-E	Black
PE-08-BI-0500F-W	White
PE-08-BI-0500F-G	Green
PE-08-BI-0500F-Y	Yellow
PE-08-BI-0500F-O	Orange

1/4" OD 0.17" ID - 1000FT COILS

PART NO.	COLOUR
PE-08-BI-1000F-N	Natural
PE-08-BI-1000F-B	Blue
PE-08-BI-1000F-R	Red
PE-08-BI-1000F-E	Black
PE-08-BI-1000F-W	White
PE-08-BI-1000F-Y	Yellow
PE-08-BI-1000F-O	Orange

5/16" OD 0.187" ID - 500FT COILS

PART NO.	COLOUR
PE-10-CI-0500F-N	Natural
PE-10-CI-0500F-B	Blue
PE-10-CI-0500F-R	Red
PE-10-CI-0500F-E	Black
PE-10-CI-0500F-W	White
PE-10-CI-0500F-G	Green
PE-10-CI-0500F-Y	Yellow
PE-10-CI-0500F-O	Orange

3/8" OD 0.25" ID - 500FT COILS

PART NO.	COLOUR
PE-12-EI-0500F-N	Natural
PE-12-EI-0500F-B	Blue
PE-12-EI-0500F-R	Red
PE-12-EI-0500F-E	Black
PE-12-EI-0500F-W	White
PE-12-EI-0500F-G	Green
PE-12-EI-0500F-Y	Yellow
PE-12-EI-0500F-O	Orange

12" OD 0.375" ID - 250FT COILS

PART NO.	COLOUR
PE-16-GI-0250F-N	Natural
PE-16-GI-0250F-B	Blue
PE-16-GI-0250F-R	Red
PE-16-GI-0250F-E	Black
PE-16-GI-0250F-W	White
PE-16-GI-0250F-G	Green
PE-16-GI-0250F-Y	Yellow
PE-16-GI-0250F-O	Orange

TECHNICAL SPECIFICATIONS - COMPRESSED AIR SYSTEM

Working Temperature Range

Minimum Working Temperature -20°C
Maximum Working Temperature +70°C
The above is for use with air. For below 0°C
Please consult our Customer Service Department.

Working Pressure

The John Guest Compressed Air System is suitable for the following temperatures and pressures.

Temperature	Pressure
+23°C	10 BAR
+70°C	7 BAR

The above ratings are for air. For use with other fluids or at other temperatures and pressures please contact our Customer Service Department.

Pipe Types

John Guest fittings are intended for use with John Guest nylon or aluminium pipe but are also suitable for use with a wide range of plastic and soft metal pipes including UPVC, ABS, Polyethylene, Nylon, mild steel and copper to the tolerances set out below. Soft plastic pipe, such as Nylon to have a minimum wall thickness of 1.5mm. The pipe must have a good quality surface and be damage free.

Pipe Tolerances

The John Guest fittings featured in this brochure are intended for pipes with outside diameters to the following tolerances.

Size	Tolerance
12mm to 28mm OD	+0.05 to -0.10mm OD

Maximum Torque Values

The following maximum torque values should be applied.

Size	3/8"	1/2"	3/4"	1"
Plastic threads	3.0Nm	3.0Nm	4.0Nm	4.0Nm
Metal threads	N/A	4.0Nm	5.0Nm	5.0Nm

It is recommended that all installations are checked prior to use to determine that a seal has been made. The maximum torque figures quoted for use with John Guest fittings are dependant on the mating thread conforming to the relevant British or International thread standard. Do not over tighten plastic fittings as this could cause undue stress and eventual failure. Recommended torque figures are shown above and must be adhered to. John Guest recommend OEM Customers consider replacing threaded 'ports' with the modern method of using John Guest Cartridge Systems.

Material Specification

The fittings are made up of three components:

Bodies are produced in strong engineering plastic or in brass.

'O' Rings are Nitrile rubber.

Collets are produce in acetal copolymer with stainless steel teeth.

Applications

Pipe and fittings should be kept clean and undamaged before use. These products are designed for use with air. For other applications please contact our Customer Services Department.

The system is not for use with explosive gases, petroleum spirits and other fuels or for central heating systems.

Installations - Our Recommendations

The pressure rating and installation guidelines of the tubing employed must also be considered during the design of compressed air system.

Pipe should be supported at minimum 800mm to prevent excessive load being applied to the fitting. These supports should not be closer than 25mm from the end of the fitting.

John Guest fittings and pipe should only be connected after the air receiver and not direct to a compressor.

We recommend collect covers be fitted when pipework is hidden inside walls and ceilings.

It is recommended that all pipe and fittings installations are pressure tested after installation and before handing over to the final user. See also 'Easy to Make a Connection' on page 4.

Side Loads

John Guest products are not designed to be used whilst under side load as this may adversely affect their ability to function long-term. Always ensure tubes have good alignment with the fitting. They must also not be subjected to any form of impact or other damage, such as being hit or dropped, even accidentally. If fittings have damaged or suffered an impact, they should be replaced immediately. John Guest warranty does not cover loss caused by any form of damage.

Note: Aluminum pipe should NOT be connected direct to a compressor.

PNEUMATICS FITTINGS

Working Temperature Range (Air)

Minimum Working Temperature = -20°C
Maximum Working Temperature = +70°C
Also suitable for vacuum.

Working Pressure. *Super Speedfit* fittings are suitable for the following pressure.

Temperature	Size	
	4mm- 8mm 5/32" - 5/16"	10mm - 12mm 3/8" - 1/2"
- 20°C	16 Bar	10 Bar
+23°C	16 Bar	10 Bar
+70°C	10 Bar	7 Bar

The above ratings are for air when *Super Speedfit* fittings are used with Nylon Tube. For use with other fluids or other tube or at other temperatures and pressures, please consult our Customer Services Department.

Tube Types

Plastic Tube - Polyethylene, Nylon and Polyurethane conforming to the tolerances shown below. For soft tubing or thin wall tube we recommend the use of tube inserts.

Braided Tube - Use of Tube to Hose Stems and Elbows is essential when using braided tube. Use of clamps to retain braided tube on barbs is recommended.

Metal Tube (soft) - Brass, copper or mild steel conforming to the tolerances below.

Metal Tube (hard) - We do not recommend Super Speedfit Fittings for hard metal tubes.

It is essential that outside diameters be free from score marks and that the tube be deburred before inserting into the fitting.

Tube Tolerances

Super Speedfit fittings are offered for Nylon tube with the following dimensions:-

Size (Inches)	5/32 - 3/16	1/4 - 1/2
Tolerance (Inches)	+0.001 / -0.003	+0.001 / -0.004
Size (mm)	4mm - 5mm	6mm - 22mm
Tolerance (mm)	+0.05 / -0.07	+0.05 / -0.10

Side Loads

John Guest products are not designed to be used whilst under side load as this may adversely affect their ability to function long-term. Always ensure tubes have good alignment with the fitting. They must also not be subjected to any form of impact or other damage, such as being hit or dropped, even accidentally. If fittings have damaged or suffered an impact, they should be replaced immediately. John Guest warranty does not cover loss caused by any form of damage.

Material Specifications

The fittings are made up of three components:

Bodies. Bodies are produced in an acetal copolymer engineering plastic, especially suitable for pneumatics and corrosion free applications. Selected bodies and body parts are brass.

'O' rings. Are Nitrile rubber.

Collets. Are produced in acetal copolymer with stainless steel teeth.

Chemicals

For use with chemicals or other potentially aggressive liquids, please refer to our Customer Services Department.

Super Speedfit fittings are not for use with explosive gases, petroleum spirits, and other fuels or for central heating heating systems.

Installation and System Testing

Fittings and tube should be kept clean and undamaged before use. All tube and fittings installations must be pressure tested after installation to ensure system integrity before handing over to the final user. See also "Easy to make a connection" on page 4.

Maximum Torque Value in Nm

	M3	M5	1/8	1/4	3/8	1/2
Plastic Threads	-	-	1.5	1.5	3.0	3.0
Metal Threads						
LM Range	0.5	1.5	6.0	-	-	-
Supertread	-	-	6.0	10.0	10.0	10.0
Banjo Systems	-	-	6.0	10.0	10.0	10.0
Banjo Flow Controls	-	1.5	4.0	10.0	-	-
Metric Threaded Fittings	-	0.7	-	-	-	-

A. It is recommended that all installations are checked prior to use to determine that a seal has been made.

B. The maximum torque figures quoted for the use with John Guest fittings are dependent on the mating thread conforming to the relevant British or international thread standard. Do not over tighten plastic fittings as this could cause undue stress and eventual failure. Recommended torque figures are shown above and must be adhered to. John Guest recommend OEM Customers consider replacing threaded 'ports' with the modern method of using John Guest Cartridge Systems.

General Conditions of Sale

1. GENERAL

(a) These conditions and any special conditions agreed in writing between us and the purchaser shall apply to all quotations by us and all orders and contracts for the manufacture or sale of goods accepted or carried out by us to the exclusion of any conditions in the purchaser's order terms or otherwise imposed by the purchaser.

(b) All orders are subject to our written acceptance and in particular no binding contracts shall be created by the acceptance by the purchaser of a quotation or offer made by us unless and until we shall have accepted the order in writing.

2. DOCUMENTS

(a) Unless otherwise stipulated in our written acceptance all descriptions, illustrations, drawings in our catalogues and literature (copies of which are available on request) or submitted independently, estimates of performance, weights and measurements or other specifications provided by us are approximate only and we reserve the right to alter or amend the same at any time.

(b) We reserve the right at any time to correct clerical or technical errors in the contract documents.

(c) The purchaser shall furnish with his order all necessary specifications and information. We take no responsibility for goods manufactured, priced or delivered not in accordance with the order or the specifications unless the purchaser's order and specifications are clear and correct in every particular.

3. ADVISORY SERVICE

The advisory service which we provide in connection with our goods is part of our sales service and we do not make any charge for advice given. Any advice and assistance is given at the purchaser's risk and we shall not be liable for any loss, damage or claims arising therefrom.

4. HEALTH AND SAFETY AT WORK ACT

The purchaser's attention is drawn to the installation, maintenance and operating instructions given in our catalogues or literature. These should be carefully followed. Further information if required is available at our Head Office.

5. PRICES

(a) Unless otherwise stipulated all prices contained in our quotations and written acceptances are ex works and do not include the cost of packing. All orders are accepted on the condition that all such prices are subject to revision by us at any time before the goods are dispatched to take account of any increase in costs.

(b) In the event of the whole order quoted for not being placed with us we reserve the right to revise our prices.

(c) We also reserve the right to revise our prices if any changes are made by the purchaser in the specifications or quantities of the goods or delivery requirements after the order has been accepted.

6. VALUE ADDED TAX

VAT if not included in our quotation shall be added and payable where and at the rate applicable.

7. MINIMUM CHARGE

Depending on the product or service provided, a minimum order charge may be applicable. Details of these charges are as shown on current price lists or quotations or are available from the Customer Services Department.

8. TERMS OF PAYMENT

(a) Unless otherwise stipulated in our written acceptance our terms of payment are 30 days from date of invoice.

(b) Overseas business is accepted subject to special terms as to payment to be agreed prior to our written acceptance of the order.

(c) Where the contract is to be or may be fulfilled in separate installments, deliveries or part payment for each such installment delivery or part shall be made under sub-clause (a) above as if the same constituted a separate contract.

(d) We shall be entitled to interest on all sums overdue at the rate of two and one half percent above our bank's base rate from time to time in force.

(e) In the event of the purchaser for any reason whatsoever failing within one calendar month of the due date for payment to effect any payment which may be due under the contract or any contract with us, or if he commits any breach of the contract, or if he becomes insolvent or commits any act of bankruptcy or calls a meeting of or enters into a competition with or for the benefit of his creditors, or being a body corporate, has a receiver appointed of its undertaking or assets or any part thereof or a winding up order is made against the purchaser or the purchaser goes into liquidation (save for the purpose or reconstruction or amalgamation), we shall thereupon be entitled, without prejudice to our other rights, forthwith to terminate the contract or any unfulfilled part thereof, or at our option to make partial deliveries.

9. CANCELLATION

No order or other contract may be cancelled or varied except by agreement in writing with us, and on such terms as we may stipulate.

10. HANDLING CHARGE

Goods supplied in accordance with the purchaser's order may later be returned to us at our discretion provided the goods are unused. The purchaser will be required to pay to us a handling charge of 15% to 30% of the then current list price of such returned goods, depending on the condition of the goods.

11. TIME FOR DESPATCH

(a) All periods or dates quoted for despatch and delivery are approximate only.

(b) We shall be entitled, without liability on our part and without prejudice to our other rights, to terminate the contract or any unfulfilled part thereof, or at our option to suspend or make partial deliveries if the completion or the manufacture of the goods by us or by our suppliers is prevented, hindered or delayed whether directly or indirectly by reason of the purchaser failing to furnish necessary information or instructions, or of any strikes, lock-outs, fire, flood, accident or damage to goods or delay in obtaining or inability to obtain through scarcity of materials, or any other cause whatsoever beyond our or our suppliers' reasonable control, whether such cause exists at the date of the order or not.

12. DELIVERY AND RISK IN GOODS

(a) Unless otherwise expressly agreed in writing, or as otherwise herein provided, delivery of the goods shall be deemed to be made when we have notified the purchaser that the goods are ready for despatch from our works and the risk in the goods shall thereupon pass to the purchaser. We shall not in any event be under any obligation to give to the purchaser the notice specified in Section 32 (3) of the Sale of Goods Act 1979.

(b) Notwithstanding that our prices are ex works we are prepared by special contract to procure carriage or freight and insurance on behalf of the purchaser and at his cost in which event we shall be under no liability for damage in transit loss or damage to the goods beyond the point of which we contract to deliver the same.

(c) The following provisions shall apply in relation to all deliveries of goods.

(i) we will entertain no claim for damage in transit, shortage of delivery or loss of goods, unless in the case of damage in transit or shortage of delivery a separate notice in writing is given to the carrier concerned and to us within three days of the receipt of the goods, followed by a complete claim in writing within five days of receipt of the goods and in the case of loss of goods, a separate notice in writing is given to the carrier concerned and to us and a complete claim in writing made within thirty days of the date of consent;

(ii) where goods are accepted from the carrier concerned without being checked the delivery book of the carrier concerned must be signed 'not examined';

(iii) we shall have the right to attend at the purchaser's premises to inspect any goods in respect of which any such claim is made and the purchaser shall retain such goods until we shall have inspected such goods or until we have notified the purchaser that we do not wish to inspect such goods;

(iv) any breach of this condition shall dis-entitle the purchaser to any allowance in respect of the claim.

(d) Without prejudice to our other rights, should the purchaser fail for any reason to send us forwarding instructions within ninety days after the date of our notification that the goods are ready for despatch or to accept delivery of the goods we shall be entitled at the purchaser's risk and expense to store the goods and/or to procure or effect storage of the goods elsewhere. Goods so stored shall be paid for as if they had been dispatched and/or accepted.

13. PROPERTY IN THE GOODS

Until further payment has been received by us for all goods whatsoever supplied at any time by us to the purchaser:

(a) Property in the goods shall remain in us.

(b) Subject to sub-clauses (c) and (d) below the purchaser shall be at liberty to sell the goods in the ordinary course of business on the basis that the proceeds of sale shall be our property and that the purchaser shall account to us on demand.

(c) We may at any time revoke the purchaser's power of sale by notice to the purchaser if the purchaser is in default for longer than seven days in the payment of any sum whatsoever due to us or if we have bona fide doubts as to the solvency of the purchaser.

(d) The purchaser's power of sale shall automatically cease if the purchaser becomes insolvent or commits any act of bankruptcy or calls a meeting (of or enters into composition or arrangement with) or for the benefit of his creditors, or being a body corporate has a receiver appointed of its undertaking or assets or any part thereof or a winding-up order is made against the purchaser or the purchaser goes into liquidation (save for the purposes of reconstruction or amalgamation).

(e) Upon determination of the purchaser's power of sale under sub-clause (c) or (d) above the purchaser shall place the goods at our disposal and we shall be entitled to enter any premises of the purchaser for the purpose of removing such goods from the premises.

14. SPECIAL TOOLS OR DIES

Where it is necessary for us to manufacture or to purchase special tools, dies, jigs, mandrills in order to execute a contract the purchaser will be charged with a proportion of the cost of such special tools. Any such tools remain our property even when the purchaser has been charged with part of the cost.

15. TEST AND PERFORMANCE

(a) Our goods are, where practicable, submitted to our standard test before delivery. If special tests are required, these shall be made at our premises unless otherwise agreed, and will be charged extra.

(b) We accept no liability for failure to attain any performance figures quoted by us unless we shall have specifically guaranteed them with an agreed sum as liquidated damages and the purchaser has suffered loss by reason of the failure to attain the figures quoted.

(c) Any particulars of weights and measurements, power and consumption, power output or performance relating to the goods and like matters furnished by us to the purchaser in our catalogues, literature or otherwise, are approximate and are intended only to present a general idea of the goods to be supplied and unless previously agreed specifically in writing shall not form part of the contract.

16. FAULTS AND DEFECTS AND EXCLUSION OF LIABILITY

(a) We warrant that if within twelve months of delivery of the goods to the purchaser the purchaser returns immediately to our premises any of the said goods which he considers to be defective, carriage paid, properly packed and clearly marked with the purchaser's full name and address and any other information such as serial numbers which may be necessary to enable the goods to be identified, together with a complete description of the respects in which it is alleged that the goods are defective, such goods will be examined and should we be satisfied that the goods are defective, they will be repaired or new goods will be supplied in exchange and the goods so repaired or such new goods will be delivered to the purchaser free of charge at our premises provided that the foregoing warranty shall only be applicable if upon being required by us to do so the purchaser proves to our satisfaction:

(i) that the defect was due solely to defective workmanship;

(ii) that no alterations or repairs have been made to the goods except with our written consent;

(iii) that the defect was not caused by incorrect or negligent handling or storage, disregard of operating instructions, over-loading, unsuitable work, faulty erection or any other default by the purchaser, his servants or agents;

(iv) that the defect was not caused by fair wear and tear, accident, or any other matter beyond our reasonable control occurring after the date of receipt by the purchaser.

(b) All costs and expenses, including freight charges, customs duties and insurance costs incurred in returning the goods to our premises in accordance with this condition shall be for the account of the purchaser. The benefit of this warranty shall not be assignable by the purchaser.

(c) The warranty contained in sub-paragraph (a) above does not extend to any goods not manufactured by us although supplied by us nor does it extend to any second-hand or reconditioned goods. Goods not manufactured by us carry only the warranty (if any) of the makers and the purchaser is entitled to the benefit thereof only so far as we have the power to transfer it.

(d) The terms of this condition are in lieu of all conditions, warranties or other terms as to description, fitness for purpose, condition, merchantability, quality or otherwise in respect of the goods or repaired or replacement goods whether expressed in the contract or implied by common law, custom or statute and notwithstanding that such purpose or condition may be, may become or may have been known to us. Apart from our obligation to repair or replace goods in accordance with the terms of this condition, we accept no liability in respect of the goods whether for consequential loss or loss of profits or damages to third parties or otherwise to the extent permitted by law.

17. INDEMNITY

The purchaser shall indemnify us against all actions, claims, demands, penalties and costs by third parties in tort, or for infringement, or alleged infringement, of patents, registered designs or other industrial property rights, or otherwise arising, in connection with the goods or with their delivery or unloading or with work done by us on the goods manufactured in accordance with the purchaser's specifications.

18. LIEN

In addition to any right of lien to which we may by law be entitled we shall have a general lien on all goods of the purchaser in our possession although such goods or some of them may have been paid for the unpaid price of any other goods sold and delivered to the purchaser by us under the same or other contracts.

19. WAIVER

Our rights shall not be affected or restricted by any indulgence or forbearance granted to the purchaser. No waiver by us of any breach shall operate as a waiver of any later breach.

20. LAW AND JURISDICTION

The rights and obligations of the parties and all the terms and conditions thereof any disputes arising out thereof shall be construed in accordance with English Law to the jurisdiction of the courts of which the purchaser shall submit.

21. GENERAL

If any of these conditions or any part thereof:

(i) purports to exclude or restrict or limit any liability and such exclusion or restriction or limitation is prohibited or rendered void or unenforceable by any legislation to which it is subject;

(ii) is itself prohibited or rendered void or unenforceable by any legislation to which it is subject; then the exclusion restriction or limitation on the condition or part thereof in question shall be so prohibited or rendered void or unenforceable to the extent to which it is prohibited or rendered void or unenforceable and no further and the validity or enforceability or any other part of these conditions shall not thereby be affected.

John Guest International Limited



John Guest Limited

Horton Road, West Drayton, Middlesex UB7 8JL, UK.
Tel: (00 44) (0) 1895 449233 E: info@johnsguest.com

johnsguest.com



John Guest USA Inc.

180 Passaic Avenue, PO Box 11085, Fairfield,
New Jersey, 07004, USA
T: (001) 973 808 5600 E: info@jgusa.com



John Guest France S.A.

143-147 Avenue Charles Floquet, Parc Gustave Eiffel,
F-93593 Le Blanc-Mesnil, Cedex, France
T: (00 33) (0)1 48 65 52 29 E: info@johnsguest.fr



John Guest GmbH

Ludwig-Erhard-Allee 30, D-33719 Bielefeld, Germany
T: (00 49) (521) 972 560 E: info@johnsguest.de



John Guest Czech s.r.o.

Vrbenská 2290, CZ-37001 České Budějovice,
Czech Republic
T: (00 420) (387) 002 040 E: info@johnsguest.cz



John Guest Polska Sp. z o.o.

Ul. Starołęcka 7, PL 61-361 Poznań, Poland
T: (00 48) (61) 87 80 408 E: info@johnsguest.pl



John Guest s.r.l.

Via Vincenzo Lancia 13, 10038 Casabianca -
Verolengo (Torino), Italy
T: (00 39) (011) 957 5880 E: info-italia@johnsguest.com



John Guest s.l.

C/ de La Electronica No. 7, Poligono Industrial La Ferreria,
Montcada I Reixac, 08110 Barcelona, Spain
T: (0034) (93) 575 0027 E: jgspain@johnsguest.com



John Guest Korea Limited

A-dong 112 & 212 ho, Togisanup2cha, Jisiksanup Center,
61 Ganam-ro, Seo-gu, Incheon, South Korea
T: (00 82) (32) 584 3370 E: info@johnsguest.co.kr



John Guest Pacific Limited

81 Apollo Drive, Rosedale 0632, Auckland, New Zealand
T: (00 64) (9) 8281353 E: info@johnsguest.co.nz



John Guest Pacific Limited (Australia)

Unit 6, 33 Nyranng Street, Lidcombe, Sydney,
N.S.W. 2141, Australia
T: (00 61) (2) 9737 9088 E: info@johnsguest.com.au



Product Selection and Installation

John Guest fittings and related products are specifically designed and manufactured by John Guest to the Technical Specifications set out in the John Guest Product Catalogues. All John Guest fittings and related products should be selected, installed, used and maintained in accordance with these Technical Specifications. It is the customer's / user's responsibility to ensure that John Guest fittings and related products are suitable for their intended applications, and are properly installed and maintained and are used in accordance with the Technical Specifications. It is also the customer's / user's responsibility to provide it's customers with any relevant technical information about John Guest products it supplies them.

The company has a policy of continuous research and development and reserves the right to amend without notice the specification and design of all products illustrated in this catalogue. John Guest reserve the right to change the colour and shape of products. Photographs are for illustration purposes only.

Subject to our Terms and Conditions of Sale available on request.

JG, John Guest® and **Super Speedfit** are registered trademarks of John Guest International Limited © Copyright 2016.