

# TUFF-VENT

Steel security louvred doors



MADE IN  
BRITAIN



**STEEL DOORS  
FOR THE  
REAL WORLD**



## **INTRUDER RESISTANT**

Certified to **PAS 24**  
and approved by  
**Secured by Design**



## **CE MARKED**

CE Marked to  
**BS EN 14351-1**



## **MADE TO MEASURE**

All steel doors are made to  
order at our UK factory and  
delivered fully assembled.

# **ROBUST**

## **Steel Door Solutions**

Scandinavian design. Manufactured in Britain



Official Police Security Initiative



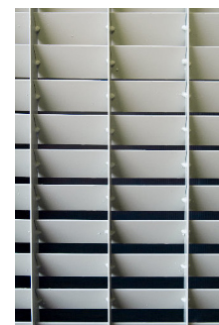
# TUFF-VENT

## Steel security louvred doors

Alongside our standard steel and aluminium louvred products, we also manufacture a security rated louvred door. Offering maximum free airflow whilst maintaining strength and security, TUFF-VENT is suitable for plant rooms, boiler rooms etc where a continuous airflow is required to ventilate machinery. TUFF-VENT is fully CE compliant and can be polyester powder coated in our standard range of colours.

### > DOOR LEAF

<b>Production sizes:</b>	TUFF-VENT is available made to measure and delivered fully assembled.
<b>Thickness:</b>	A standard 2mm steel louvre vane is used throughout, welded at every junction.
<b>Material:</b>	2mm galvanised steel sections as standard.
<b>Construction:</b>	Constructed using hollow metal standardised sections.



### > DOOR FRAME

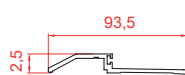
<b>Construction:</b>	Fully welded construction with 10no. adjustable fixing feet per jamb, variable sub-frame supplied as standard to accommodate site tolerance of -0/+30mm. The frame is fitted with 5no. surface mounted hinges.
<b>Opening:</b>	Single swing latched as standard.

### > SIZES

Configuration:	Max frame width (mm):	Max frame height (mm):
Single leaf without side & over panels:	1085	2180
Double leaf without side & over panels:	2180	2180
Coupled or stand alone side panels(either side):	700	2195
Coupled or stand alone over panels:	2500	600

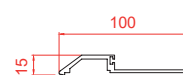
### > THRESHOLD

#### Standard



15mm aluminium  
 (DDA compliant)

#### Optional



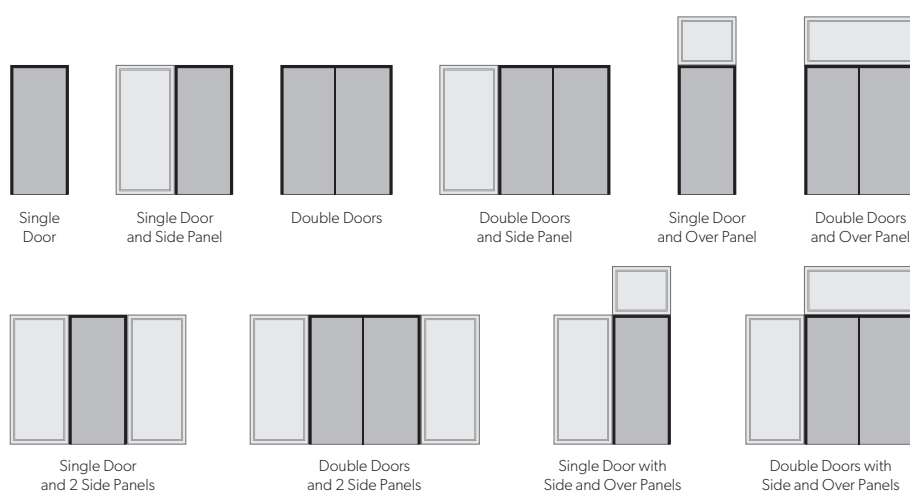
15mm steel pressed  
 rebated threshold  
 (DDA compliant)

## > FREE AREA

When calculated on a 1000mm x 2100mm over frame door, TUFF-VENT achieves a free area of 55 %. When based on the area of the louvres only, this equates to 72%.

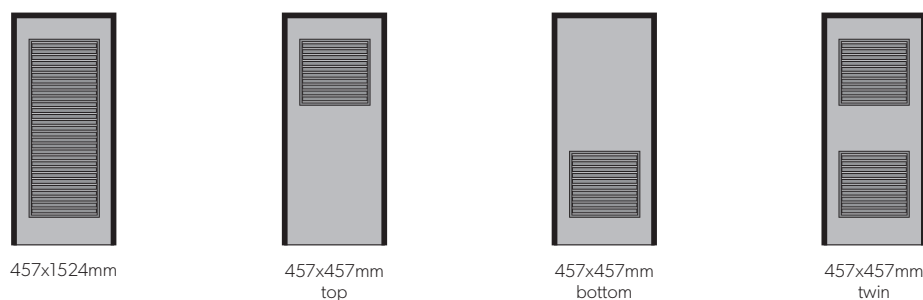
## > PANEL ARRANGEMENTS

<b>Panels:</b>	Side and over panels can be supplied.
<b>Panel sizes:</b>	Side panels are available up to 1100mm wide x 2500mm high. Over panels are available up to 2500mm (single door) or 2200mm (double door).
<b>Options:</b>	Combinations to create enclosures. Please consult the Sales office with specific requirements.



## > LOUVRE PANEL OPTIONS

<b>Options:</b>	TUFF-VENT grid is also available as a panel to fit into INNA-DOR, OUTA-DOR and SECUR-DOR 2.
<b>Sizes:</b>	Two standard sizes: 457mm x 457mm and 457mm x 1524mm, giving approximately 0.15m² and 0.5m² free area respectively.



## > SECURITY

The TUFF-VENT doorset is tested to PAS 24 and approved by Secured by Design - the official UK Police initiative to 'design out crime'. Please note however that TUFF-VENT is not available certified to LPS 1175 like TUFF-DOR.





## > FINISHES

### Standard



Polyester Powder  
Coated from Standard  
Colour Range

### Optional



Polyester Powder  
Coated from Non-  
Standard Colour Range



Stainless Steel  
Brushed, Polished  
or Patterned



Unfinished for  
site finishing

## > LOCKS AND HARDWARE

**We stock a wide range of steel door parts, including: handles, locks, hinges, seals, panic hardware, closers & stays, cylinders, paint, thresholds, access control hardware and plates.**

TUFF-VENT is fitted with a Hooply lock, with Securefast escutcheons and TS007 cylinder as standard. Double door configurations are available with flushbolts. All doors are delivered fully assembled.

