

# TUFF-DOR

LPS 1175 certified steel  
security doors

MADE IN  
BRITAIN



**STEEL DOORS  
FOR THE  
REAL WORLD**

## **TUFF-DOR2**

Tested to  
**LPS 1175 SR2**

## **TUFF-DOR3**

Tested to  
**LPS 1175 SR3**

## **TUFF-DOR4**

Tested to  
**LPS 1175 SR3**



# **ROBUST**

**Steel Door Solutions**

Scandinavian design. Manufactured in Britain



# TUFF-DOR

## LPS 1175 Certified Steel Security Doors

The Robust TUFF-DOR is a fully certified LPS 1175 security doorset designed to offer an enhanced level of security for a wide range of premises, from domestic or light commercial premises through to those at high risk of attack by experienced intruders.

The doors are specially constructed to individual project requirements and each door has internal reinforcement designed to resist sustained attack from a wide range of tools.



LPS 1175 Cert/LPCB ref. 1070A

### > VERSIONS

We offer three versions – each providing increased security:

#### **TUFF-DOR2**

Tested to  
**LPS 1175 SR2**

Up to **3 minutes** of resistance to opportunist attempts at forced entry of protected premises using a range of mechanical tools including: screwdriver, levers, spanner, bolt cutters, claw hammer, drill, shears, etc

#### **TUFF-DOR3**

Tested to  
**LPS 1175 SR3**

Up to **5 minutes** of resistance to determined attempts at forced entry of protected premises using a wide range of tools including: cordless tools, short axe, cold chisels, crow bar, brick bolsters, gas torch, etc.

#### **TUFF-DOR4**

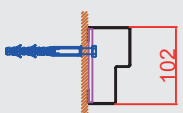
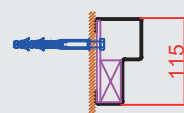
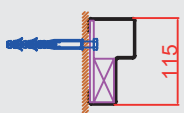
Tested to  
**LPS 1175 SR4**

Up to **10 minutes** of resistance to experienced attempts at forced entry using a wide range of tools including: high powered cordless tools, felling axe, sledgehammer, power drill, disc grinder, jigsaw, etc.

### > DOOR LEAF

Production Sizes:		All TUFF-DOR doors are custom made.		
<b>Single Doors Latched:</b>	Max Width	mm	1250	1300
	Max Height	mm	2600	2500
<b>Double Doors:</b>	Max Width	mm	2500	2500
	Max Height	mm	2600	2500
<b>Thickness:</b>	mm	46	59	61
<b>Material:</b>		Aluzinc	Aluzinc	Aluzinc
<b>Infill:</b>		Honeycomb/Mineral Wool	Solid Timber	Solid Timber
<b>Construction:</b>		Welded	Welded	Welded
All TUFF-DORs contain additional internal reinforcement in strategic locations to enhance attack resistance.				

### > DOOR FRAME

<b>Frame width:</b>	mm	102	115	115
<b>Material:</b>		Aluzinc	Aluzinc	Aluzinc
<b>Construction:</b>		Bolted	Welded	Welded
<b>Profile:</b>				

## > SITE INSTALLATION

		<b><u>TUFF-DOR2</u></b>	<b><u>TUFF-DOR3</u></b>	<b><u>TUFF-DOR4</u></b>
<b>Strike:</b>	mm	4	3	3
<b>Hinge:</b>	mm	4	13	13
<b>Meeting Stile:</b>	mm	5	5	5
<b>Head:</b>	mm	3	3	3
<b>Floor:</b>	mm	7	5	5

NOTE: For the doors to operate correctly it is imperative that the clearance at both the strike side on single doorsets and meeting stile on double doors is achieved and maintained as detailed in the table below.

## > MANUAL HANDLING

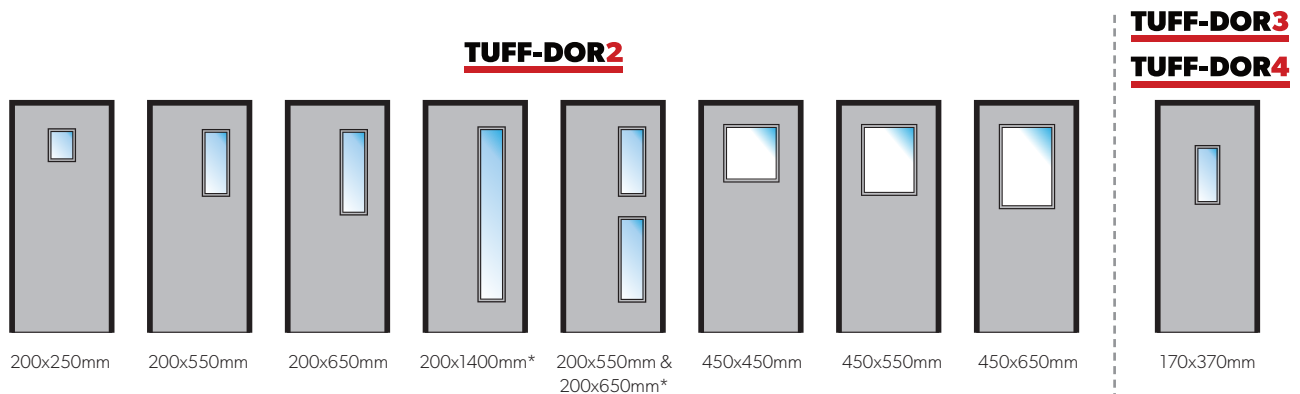
While the TUFF-DOR2 leaves, weighing approx 100kg, can be manually handled with a minimum of 4 operatives on site, all other doors in the range require mechanical means to distribute and install.

## > WALL CONSTRUCTION

The opening must be fully formed from a material with sufficient composition strength to withstand a minimum load/fixing of  $7\text{N}/\text{mm}^2$  (such as concrete or brick). Aerated concrete is NOT RECOMMENDED and hollow brick / block should only be considered if suitably backfilled with materials that will provide adequate strength ( $7\text{N}/\text{mm}^2$ ) to take the frame fixings

## > VISION PANELS

A limited range of vision panel and louvre options are available in tested configurations



## > LOUVRES AND GRILLS

All louvre and grill options can be used with double door sets.



\*Not permitted with panic hardware

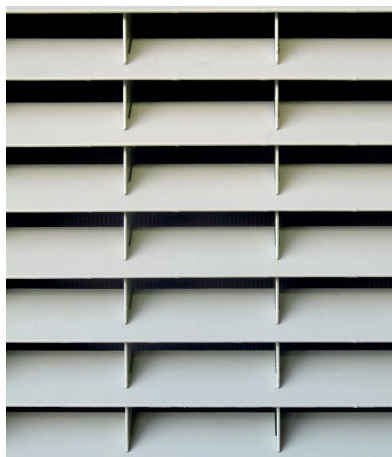


## > TUFF-VENT

Our TUFF-VENT doorset offers the maximum free airflow whilst maintaining strength and security. A standard 2mm galvanised steel louvre vane is used throughout, welded at every junction for additional strength. Side panels and overpanels can also be manufactured to make up large openings where large doors may be impractical.

When calculated on a 1000mm x 2100mm over frame door, the Robust TUFF-VENT achieves a free area of 55% (based on the area of the louvres only, this equates to 72%). Robust TUFF-VENT doors are fully CE compliant and can be polyester powder coated in a standard range of colours.

Please note our TUFF-VENT doors are not available certified to LPS1175.



Robust **design.** Robust **guarantee.** Robust **quality.**



### > MADE TO MEASURE

All steel doors are made to order at our UK factory, are available in a wide range of heights and widths to suit any requirement, and are delivered fully assembled.



### > MADE IN BRITAIN

Scandinavian design that's proudly engineered and manufactured in Britain.



### > MODERN DESIGN

ROBUST doorsets are available polyester powder coated and the door blade can be patterned in a range of designs. We can also offer specially finished woodgrain PPC on request, which combines the traditional look of timber with the modern durability of steel.



**ROBUST UK LTD** Sutherland Road, Longton, Stoke-on-Trent, Staffordshire, ST3 1HZ  
Tel: +44 (0) 1782 592900 Email: [sales@robust-uk.com](mailto:sales@robust-uk.com)

*Individual specifications may vary as Robust conduct a policy of continuous product development.*

**ROBUST**

Steel Door Solutions

[www.robust-uk.com](http://www.robust-uk.com)