



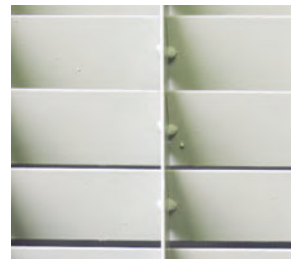
TUFF-VENT DOORS

Fully **CE** compliant.
Tested to EN14351-1 product compliant standard

*The Robust "TUFF-VENT" doorset offers the maximum free airflow whilst maintaining security.
Side panels and overpanels can be manufactured to make up large openings where large doors may be impractical.*



Front Detail



Rear Detail

DOOR LEAF

- Production Sizes:** "TUFF_VENT" doors are manufactured in 1000 x 2100mm and 2000 x 2100mm sizes.
- Thickness:** A standard 2mm steel louvre vane is used throughout, welded at every junction.
- Material:** 2mm galvanised steel sections as standard.
- Construction:** Constructed using hollow metal standardised sections.

DOOR FRAME

- Construction:** Fully welded construction with 4no. adjustable fixing feet per jamb, variable sub-frame supplied as standard to accommodate site tolerance of -0/+30mm.
The frame is fitted with 4no. surface mounted adjustable hinges, painted to match door.
- Opening:** Single Swing Latched as standard. Other combinations available.

THRESHOLD

- Standard:** 12.5mm 564A Aluminium (DDA compliant)
Click on images for full details.



FINISHES

- Standard:** Polyester Powder Coating from standard colour range.

FREE AIRFLOW

Calculated on a 1000 x 2100 over frame door a free area of 55% is achieved (based on the area of louvres only this equates to 72%).

OPTIONS

The "Tuff-Vent" grid is also available as a panel to fit FDA doors in two standard sizes 457 x 457mm and 457 x 1524 sizes giving approximately 0.15m² and 0.5m² free area respectively.



TUFF-VENT



ROBUST UK LTD. Sutherland Road, Longton, Stoke-on-Trent, Staffordshire, ST3 1HZ
Tel: +44 (0)1782 592 900 • Fax: +44 (0)1782 592 901 • Email: sales@robust-uk.com



Official Police Security Initiative