

Intumescent Coatings

Product Catalogue



Introducing Nullifire

At the Forefront of Smart Passive Fire Protection

We are specialists, with one focus that has not and will not change – to protect people and buildings from fire. For over 40 years, Nullifire has been a market leader in intumescent and fire stopping solutions.

Passive fire protection is highly complex but crucially important, especially as buildings become more sophisticated. At Nullifire, we understand the need to have confidence in fire protection; so, we provide systems that perform when they are called upon.

Nullifire has always innovated, pioneering water-based coating technology and most recently, the SC900 series, a fast-track intumescent coating that can save up to 60% on application and drying time.

With a unique team of technical experts, everything is focused on providing what our customers need at every stage of their project – smart protection.

Nullifire is a brand of tremco illbruck, a European manufacturer and service provider of high performance building materials.



Contents

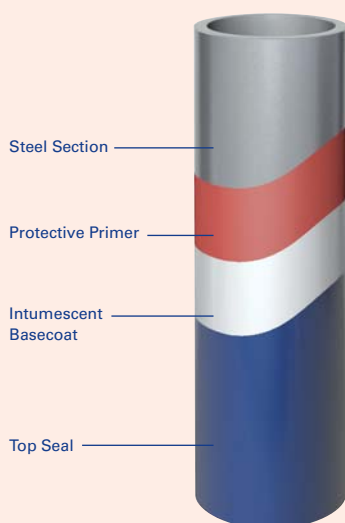
- 2 Introduction
- 4 Nullifire: The Complete System
- 5 The Right Solution
- 6 Service and Support
- 8 Fast-Track, High-Build Systems
- 10 Water-Based Systems
- 14 Solvent-Based Systems
- 16 Primers and Top Seals
- 21 Thinners and Cleaners
- 22 Certification and Accreditation
- 23 tremco illbruck and its Strong Brands



Nullifire: The Complete System

The Complete System from Nullifire

Detail Section of Typical Anti-corrosion Coating System



Combine Nullifire Primers and Top Seals with Nullifire Intumescent Basecoats to provide a complete system for fire protection and then decoration of structural steel. All Nullifire products are tested for compatibility to minimise the risk of problems occurring on site.

Primer

Inhibits corrosion of the underlying structural steel. Primers also provide a key for the intumescent basecoat. If using SC901 or SC902, primers may not be required (contact our Technical Services Department helpline for more information prior to use).

Intumescent Basecoat

The intumescent coating is applied to the correct thickness to provide the specified level of fire protection. Nullifire leads the way in intumescent basecoat technology.

Top Seal

Smooth hardwearing finish to seal the basecoat, which protects from bumps, cuts and accidental damage. The decorative aspect of the top seal provides an aesthetically attractive appearance.

It is recommended that Nullifire Primers, Basecoats, and Top Seals are applied by approved trained specialists such as Nullifire Premier Contractors. Full details of our approved contractors can be obtained by contacting us, or visit www.nullifire.com.

Which Products are Suitable for My Installation?

All of the Nullifire products listed are suitable for areas C1, C2 and C3. For areas of C4 and above, please contact us for technical advice. Remember that C1 and C2 areas may contain large kitchens or other areas of high humidity which may have to be regarded separately.

C1: Very low corrosion risk

Interiors

Heated buildings with clean atmospheres (e.g. offices, shops, schools, hotels).

Exteriors

n/a

C2: Low corrosion risk

Interiors

Unheated buildings where condensation may occur (e.g. depots, sports halls).

Exteriors

Atmospheres with low level of pollution. Mostly rural areas.

C3: Medium corrosion risk

Interiors

Production rooms with high humidity and some air pollution (e.g. food-processing plants, laundries, breweries, dairies).

Exteriors

Urban and industrial atmospheres, moderate sulphur dioxide pollution, Coastal area with low salinity.

The Right Solution

The Faster Way to the Right Solution

Clear and Informative Packaging Design.

Nullifire has expanded its product range and you can find all the passive fire protection products you need to protect your building from the effects of fire and smoke under one name – Nullifire.

New shortcuts and colour scheme makes it easier to find a product, with the shortcuts referencing the product type.

1

Colour codes

Fire Protection Timing Roundels

Unique to Nullifire is our distinctive timing roundel that lets you see at a glance the maximum time a fire protection product has been certified to (but always refer to the datasheet for the exact application).

The timing roundel appears prominently on the packaging, as well as on the website and in literature, for easy identification.



2

New look website

Our new website puts our wealth of knowledge and data at your fingertips.

The new search function gets you to your product, technical and safety data instantly which can be downloaded in PDF form or ordered as hardcopies.



Service and Support

Quick Assistance When You Need It

Targeted services provide answers to all your questions – quickly, simply and for every phase of your project. Use the following overview to find the right service point for your queries.

I would like to...

...get general information

...find the right product

...get help with planning

...learn how to apply a product

...improve my skills



Website

The Nullifire website has been restructured for faster access to all products. Moreover, it offers support in product selection, a continually growing range of best practice cases and access to both digital and personal services. Access is also available to Steelcalc software that estimates, analyses and compares different types of products for structural fire protection.



Brochures

Brochures for contractors, specifiers and distributors provide practical examples of projects and applications, system solutions, services and product overviews.





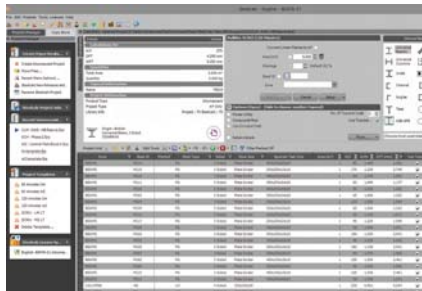
Product Datasheets

Completely revised and clearly presented product datasheets provide all the technical information you need for each specific product. Datasheets can be downloaded in digital format from our website.



Specification Services

The Nullfire team can assist with specification writing including NBS Clauses. As members of NBS Plus, architects can easily incorporate Nullfire products into their specifications with NBS Writer. Access is also available to Steelcalc software that estimates, analyses and compares different types of products for structural fire protection.



Training

Nullfire provides comprehensive training for installers in using its products. Learn how to apply Nullfire products professionally and efficiently. Discover new technologies and solutions. Benefit from the knowledge of our experts. Our product consultants can give you details of courses at our locations in the UK. CPD's for specifiers are also available, please see our website.



Consulting and Planning

Faced with complicated projects, architects- as well as other specifiers and installers- can turn to a team of experts for independent and detailed specification support. Involving us at an early stage in the project can help you save money as we can advise on best practice.



Customer Service and Support

Calling our Customer Services will put you in touch with experienced experts – and not with an anonymous call centre voice. Since we strongly believe in personal communication, we invest in our face-to-face services in order to better serve your needs.



Fast-Track High Build Systems



One-Coat Protection

SC900 series are innovative patented intumescent coatings delivering ground breaking performance for the protection of internal, semi-exposed, and external steel work. Suitable for both on-site and off-site work.

Product Selector											
Product	Type		Classification		Application area			Fire rating			
	On-site	Off-site	C1,C2	C3	Internal	Semi-Exposed	External	30 Minute	60 Minute	90 Minute	120 Minute
SC901	X	✓	✓	✓	✓	✓	✓	✓	✓	✓	✓
SC902	✓	✓	✓	✓	✓	✓	✓	✓	✓	✓	✓

For full product details, always refer to the product technical data sheet.



- Part A available in 25 kg drum or 250 kg barrel
- Part B available in 45 kg drum
- Two-pack product



SC901

Fast-Track Intumescent Coating

Optimised for off-site application

SC901 is a low VOC, one-coat, high-build system, based on patented technology.

- Fire rating up to 120 minutes tested to BS476 and EN13381: Part 8
- Fast-cure: touch-dry in 1 hour, handle and transport within 1 day
- Achieves external durability with an approved top seal
- Early weather resistance, shower-proof within 1 hour
- Self-priming system tolerant of light rusting to steel, up to 2 weeks post blasting
- High-build potential with all ratings possible in one application

Properties (typical values)

Specific gravity	Part A: 1.55 ±0.02, Part B: 0.99 ±0.01, Mixed: 1.46 ±0.02
Volume solids	85% ±3%
VOC	137 g/l
Viscosity	Part A: 140 ±20 Poise (Spindle 7 @ 50 rpm) Part B: 10 ±1 Poise (Spindle 7 @ 50 rpm) Mixed: 80 ±10 Poise (Spindle 7 @ 50 rpm)
Mix ratio	By weight 100:12, by volume 5.6:1
Gel time (liquid to gel)	30-35 minutes
Pot-life or sprayable life	15 minutes
Theoretical coverage	1,750 g/m ² based on applied 1.00 mm dry film thickness
Storage	Store in secure, dry warehouse conditions between +5°C and +35°C
Shelf life	6 months when stored as recommended in original unopened container



- Available in 25 kg kit
- Two-pack product



SC902

Fast-Track Intumescent Coating

Optimised for on-site application

SC902 is a fast-track on-site, low VOC, one-coat, high-build system, based on patented technology.

- Fire rating up to 120 minutes tested to BS476 and EN13381: Part 8
- Fast-cure: early weather resistance, shower-proof within 1 hour
- Achieves external durability with an approved top seal
- Cures below 0°C and fully dry by the following day
- Self-priming system, tolerant of light rusting to steel, up to 2 weeks post blasting
- High-build potential with all ratings possible in one application

Properties (typical values)

Specific gravity	Part A: 1.55 ±0.02, Part B: 0.99 ±0.01, Mixed: 1.46 ±0.02
Volume solids	85% ±3%
VOC	137 g/l
Viscosity	Part A: 140 ±20 Poise (Spindle 7 @50 rpm) Part B: 10 ±1 Poise (Spindle 7 @50 rpm) Mixed: 80 ±10 Poise (Spindle 7 @50 rpm)
Pot-life	Minimum 60 minutes
Theoretical coverage	1,750 g/m ² based on applied 1.00 mm dry film thickness
Storage	Store in secure, dry warehouse conditions between +5°C and +35°C
Shelf life	6 months when stored as recommended in original unopened container

Water-Based Systems



Economical & Versatile

Nullifire water-based solutions offer safe, fast, and economical fire protection for internal steelwork. Nullifire pioneered water-based technology and offer a fully comprehensive range across all fire ratings.

Product Selector											
Product	Type		Classification		Application area			Fire rating			
	On-site	Off-site	C1,C2	C3	Internal	Semi-Exposed	External	30 Minute	60 Minute	90 Minute	120 Minute
SC801	✓	✗	✓	X	✓	X	X	X	X	✓	✓
SC802	✓	✗	✓	X	✓	X	X	✓	✓	X	X
S708	✓	✗	✓	✓	✓	✓	X	✓	✓	✓	X

✗ Contract tremco illbruck for more information on usage.

For full product details, always refer to the product technical data sheet and loading tables.





- Available in 25 kg drum
- Single-pack product



SC802

Intumescent Basecoat

Water-based

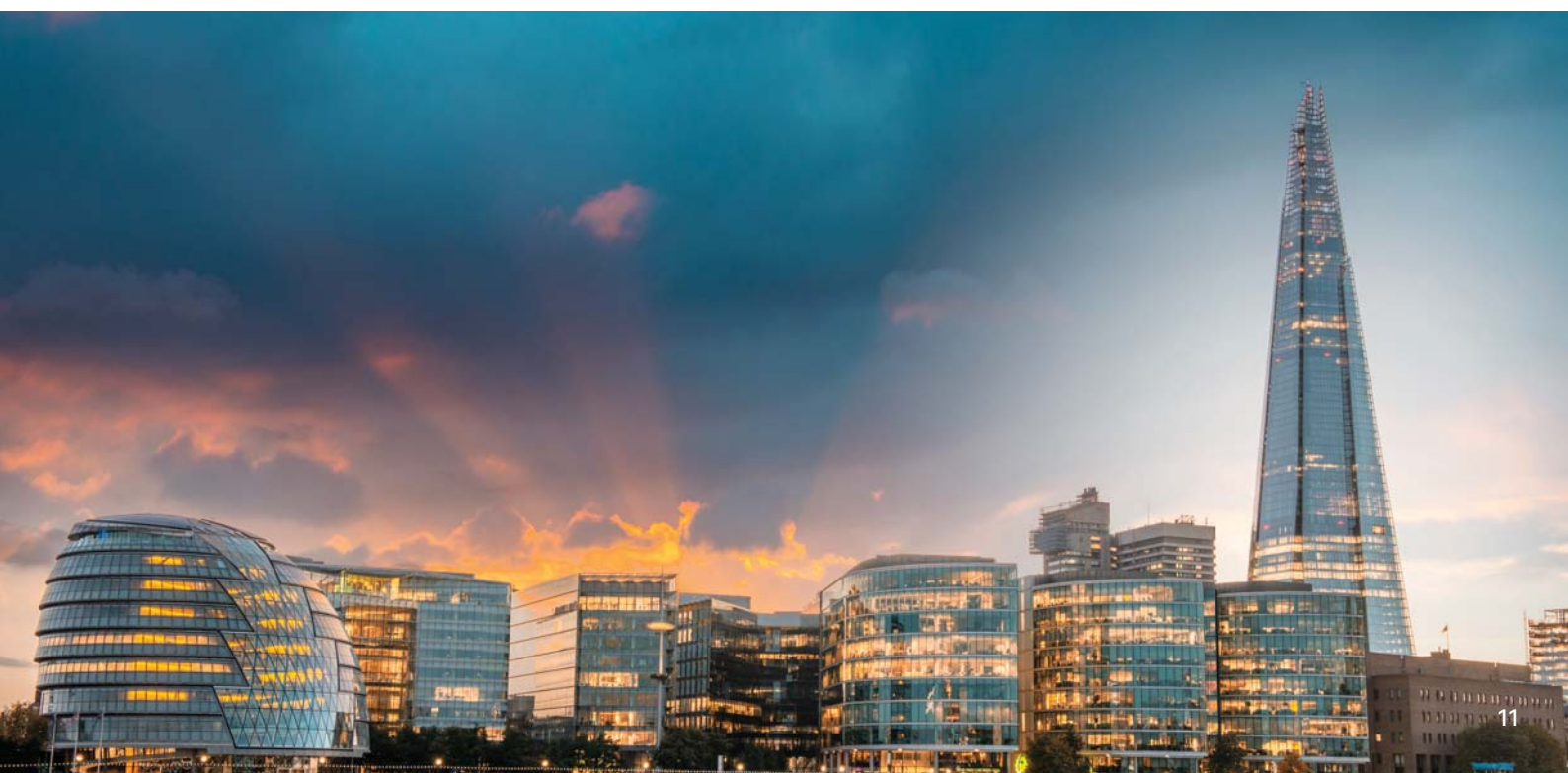
SC802 has been designed to lead the market in all aspects of 30 to 60 minute fire protection. SC802 displays excellent spraying characteristics, making it the product of choice for specialist fire protection contractors.

A water-based, single-pack product, SC802 offers the optimum mix of economic, environmental, aesthetic and practical benefits

- Most competitive 'all-round' 60 minute water-based product
- Developed with a new formulation for a class-leading ecological footprint
- Easy-to-spray product to reduce downtime and potential difficulties on site
- Gives an outstanding smooth, matt finish
- Compatible with a full range of Nullifire primers and top seals
- Outstanding adhesion and durability
- Water-based technology
- Low odour and very low VOC, easily transportable for on-site application
- Most steelwork protected in a single coat with a dry film thickness of 0.84 mm and wet film application of up to 1.2 mm
- Outstanding customer trial feedback, highlighting the highly competitive coverage and ease of application

Properties (typical values)

Specific gravity	1.38 ±0.02
Volume solids	70% ±2%
VOC	6 g/l
Viscosity	150-200 Poise (Spindle 6 @20 rpm)
Theoretical coverage	1,000 g/m ² based on an applied 0.5 mm dry film thickness
Storage	Store in secure, dry warehouse conditions between +5°C and +35°C
Shelf life	6 months when stored as recommended in original unopened container



Water-Based Systems



- Available in 25 kg drum
- Single-pack product



SC801 Intumescent Basecoat

On-site, water-based

SC801 Intumescent Basecoat is a water-based, white, thin film, intumescent coating for the protection of internal structural steelwork.

- Water-based intumescent coating suitable for internal use on structural steelwork for up to 120 minute fire resistance
- Easier to apply product for greater efficiency on site with improved smooth matt finish
- Compatible with a full range of Nullifire primers and top seals
- Low odour and very low VOC
- Easily transportable for on-site application

Properties (typical values)

Specific gravity	1.38 ±0.02
Volume solids	68% ±3%
VOC	1 g/l
Viscosity	150-200 Poise (Spindle 6 @ 20 rpm)
Theoretical coverage	2,050 g/m ² based on applied 1.00 mm dry film thickness
Storage	Store in secure, dry warehouse conditions between +5°C and +35°C
Shelf life	6 months when stored as recommended in original unopened container



- Available in 25 kg drum
- Single-pack product



S708 Intumescent Coating

Durable, water-based

S708 is the alternative to solvent-based products. Offers faster, safer protection for internal and semi-exposed steelwork, even if fully exposed during building.

- Water-based intumescent coating suitable for areas subject to exposure during construction
- Thin film with fast curing properties enabling other trades to move onto the site more quickly
- Compatible with a full range of Nullifire primers and top seals
- Low odour and low VOC content, no solvent entrapment

Properties (typical values)

Specific gravity	1.38 ±0.02
Volume solids	70% ±2%
VOC	15 g/l
Theoretical coverage	700 g/m ² based on an applied @ 0.5 mm dry film thickness
Storage	Store in secure, dry warehouse conditions between +5°C and +35°C
Shelf life	6 months when stored as recommended in original unopened container



Solvent-Based Systems



Proven Protection

Nullifire solvent-based products offer fast applied robust fire protection for internal, external, and semi-exposed environments. These products also offer a decorative finish, and are suitable for onsite or off-site application.

Product Selector											
Product	Type		Classification		Application area			Fire rating			
	On-site	Off-site	C1,C2	C3	Internal	Semi-Exposed	External	30 Minute	60 Minute	90 Minute	120 Minute
S605	✓	✓	✓	✓	✓	✓	✓	✓	✓	✓	✓
S606	✓	✓	✓	✓	✓	✓	X	✓	✓	✓	✓

For full product details, always refer to the product technical data sheet.



- Available in 25 kg drum
- Single-pack product



S605 Intumescent Basecoat

Durable, solvent-based

S605 Intumescent Basecoat is a solvent-based, intumescent coating for fire protection of both internal and external structural steelwork. S605 is very pale green in colour.

- Can provide up to 120 minute fire protection in some applications
- Proven history of successful usage in projects all over the world
- Compatible with a full range of Nullifire primers and top seals providing an outstanding finish.
- Suitable for on-site and off-site application

Properties (typical values)

Specific gravity	1.37 ±0.02
Volume solids	68% ±2%
VOC	333 g/l
Theoretical coverage	730 g/m ² based on applied @ 0.5 mm dry film thickness
Storage	Store in secure, dry warehouse conditions between +5°C and +35°C
Shelf life	12-15 months when stored as recommended in original unopened container



- Available in 25 kg drum
- Single-pack product



S606 Intumescent Basecoat

Solvent-based

S606 Intumescent Basecoat is a solvent-based, intumescent coating for fire protection of internal structural steelwork. S606 is very pale pink in colour.

- Can provide up to 120 minute fire protection in some applications
- Proven history of successful usage in projects all over the world
- Compatible with a full range of Nullifire primers and top seals providing an outstanding finish
- Suitable for on-site and off-site application

Properties (typical values)

Specific gravity	1.36 ±0.02
Volume solids	68% ±2%
VOC	333 g/l
Theoretical coverage	730 g/m ² based on applied @ 0.5 mm dry film thickness
Storage	Store in secure, dry warehouse conditions between +5°C and +35°C
Shelf life	12-15 months when stored as recommended in original unopened container

Primers and Top Seals



Anti-Corrosion Primers

Nullifire primers are designed to protect the surface of structural steel from corrosive attack. They also provide a suitable key onto which a Nullifire intumescent basecoat can be applied.

Each Nullifire primer has been formulated to meet specific application conditions AND to be compatible with the Nullifire range of intumescent basecoats.

It is important to use products that have been tested together for compatibility. This ensures that costly adhesion problems are avoided, allowing the fire protection process to run smoothly. Compatibility also guards against delamination of the coatings once installed which can be extremely costly to rectify once construction has finished and the building is in use.

Nullifire has tested all of its products with the range to avoid these issues, providing a high performance integrated system for all requirements from a single source.

Decorative Top Seals

Nullifire top seals provide an outstanding quality decorative finish. This is particularly useful where the steelwork remains exposed as opposed to being hidden by false ceiling installations or by boarding around columns. Some top seals are available in a range of shades and colours. Top seals also provide a durable finish that can be easily maintained. All Nullifire top seals have been tested with Nullifire basecoats to ensure compatibility and performance.

For full product details, always refer to the product technical data sheet.



- Available in 20 L or 5 L kits
- Two-pack product

PMO15

Two-Pack Aluminium Epoxy Primer

For problem areas and substrates

PMO15 provides an unequalled level of barrier protection and corrosion resistance on various steel types.

- Protects black steel, galvanised steel, and rusted steel
- Contains aluminium flakes to provide exceptional protection
- Long history of use in a number of industrial markets
- Self priming
- Corrosion protection with a single coat
- Low VOC
- Aluminium finish

Properties (typical values)

Substrate	Black steel, galvanised steel, rusted steel
Colours available	Aluminium
Finish	Semi-gloss
Preparation	Contact us for information on the preparation of difficult substrates
WFT	87-115 µm
DFT	75-100 µm
Drying times: @20°C touch dry	6 hours
Drying times: @20°C full cure	3 days
Over coating: @20°C	6 hours*
Theoretical coverage	11.5 m ² /l at 50 µm
Thinners	FC002
Cleaners	FC002

* Maximum overcoating time depends on the basecoat. Please contact Nullifire for further information.



- Available in 20 L or 5 L kits
- Two-pack product

PMO18

Two-Pack Epoxy Primer

High performance primer

Multi-purpose epoxy coating that can be used as either as a primer or as a top seal. The product is heavy duty and high-build.

- Protects steel in corrosive environments
- Excellent at low temperatures
- Ideal for areas where there may be condensation
- Semi-gloss finish
- Very good abrasion resistance
- Available in RAL 9002 White/Grey

Properties (typical values)

Substrate	Black steel
Colours available	RAL 9002 White/Grey
Finish	Semi-gloss
Preparation	Hand clean/power tool or UHP water jet rig
WFT	Normally 205 µm
DFT	Normally 175 µm
Drying times: @20°C touch dry	4 hours
Drying times: @20°C full cure	7 days
Over coating: @20°C	4 hours
Theoretical coverage	8.6 m ² /l at 100 µm
Thinners	FC002
Cleaners	FC002

Primers and Top Seals



- Available in 20 L kits
- Two-pack product

PMO19

Anti-Corrosion Transport Primer

For immediate protection

Protects steel for up to three months prior to transportation on to site and overcoating with a Nullifire basecoat.

- Provides steel with up to three months protection prior to coating
- Steel can be moved whilst protected
- Steel can be stored outdoors
- Excellent tie coat for SC901 and SC902
- Highly suitable as general primer
- Fast drying
- Red or Grey

Properties (typical values)

Substrate	Black steel, galvanised steel
Colours available	Red/Grey
Finish	Matt
Preparation	Grit blast steel to SA2 1/2 or equivalent, for galvanised steel, see TDS
WFT	110 µm
DFT	30 µm
Drying times: @20°C touch dry	16 hours
Drying times: @20°C full cure	3 days
Over coating: @20°C	8 hours
Theoretical coverage	9.3 m ² /l at 30 µm
Thinners	FC002
Cleaners	FC002



- Available in 20 L kits
- Single-pack product

PMO20

Single-Pack Alkyd High-Build Primer

Standard primer for general work

A single-pack solution that is well suited to production shops or sites that need fast-cure drying and handling times.

- Single-pack
- Fast drying primer
- Compatible with all Nullifire basecoats, except the SC900 series
- Good filling properties on rough or pitted steel
- Traditional red colour
- Easily sprayed with both airless and conventional equipment

Properties (typical values)

Substrate	Black steel
Colours available	Red
Finish	Matt
Preparation	Grit blast steel to SA2 1/2 or equivalent
WFT	68 - 98 µm
DFT	35 - 50 µm
Drying times: @20°C touch dry	20 minutes
Drying times: @20°C full cure	3 days
Over coating: @20°C	8 hours minimum
Theoretical coverage	11.0 m ² /l at 50 µm
Thinners	FC0010
Cleaners	FC002 or FC010



- Available in 20 L kits
- Two-pack product

PMO21

General Purpose, Two-Pack Epoxy Polyamide Primer

Excellent all round performance

A two-pack general purpose 'inhibitive primer' that chemically reacts with the steelwork to create a corrosion resistant surface.

- General purpose primer
- Compatible with all Nullifire basecoats
- Good corrosion resistance
- Grey
- Excellent sag resistance
- Flat finish

Properties (typical values)

Substrate	Black steel
Colours available	Grey
Finish	Matt
Preparation	Hand clean/power tool or UHP water jet rig
WFT	100-300 µm
DFT	50-150 µm
Drying times: @20°C touch dry	90 minutes
Drying times: @20°C full cure	12 days
Over coating: @20°C	12 hours
Theoretical coverage	10.4 m²/l at 50 µm
Thinners	FC002
Cleaners	FC002



- Available in 20 L or 5 L kits
- Two-pack product

TS134

Two-Pack Acrylic Polyurethane Top Seal

High performance top seal

- High-gloss, solid finish
- Available in a range of RAL colours
- Suitable for on-site or off-site application
- Excellent abrasion resistance
- Excellent resistance to weathering
- Easily sprayed with both airless and conventional equipment
- VOC-compliant to current AIM regulations

Properties (typical values)

Basecoat	SC901, SC902, SC801, SC802, S707, S708, S605, S606
Colours available	White and limited RAL colours
Finish	High gloss
Preparation	Apply to clean dry basecoat
WFT	115 µm
DFT	75 µm
Drying times: @20°C touch dry	4 hours
Drying times: @20°C full cure	3 days
Over coating: @20°C	12 hours
Theoretical coverage	8.6 m²/l at 75 µm
Thinners	FC025 - spray, FC215 - roller
Cleaners	FC002

Primers and Top Seals



- Available in 10 L packs
- Single-pack product

TS815

Single-pack Modified Acrylic Top Seal

General purpose top seal for C1 and C2 environments

- Single-pack product
- Gloss finish
- Available in Standard White and a limited range of RAL colours
- Suitable for on-site or off-site application
- Fast drying
- Easily sprayed with both airless and conventional equipment
- VOC compliant to current AIM regulations

Properties (typical values)

Basecoat	SC801, SC802, S707, S708, S605, S606
----------	--------------------------------------



- Available in 20 L packs
- Single-pack product

TS816

Single-pack Water-Based Acrylic Top Seal

Interior top seal

Single-pack, water-based acrylic top seal

- Attractive soft sheen washable finish
- Easy application and excellent coverage
- Environmentally friendly with low odour
- Available in a limited range of RAL colours
- Good abrasion resistance

Properties (typical values)

Basecoat	SC801, SC802, S707, S708, S605, S606
----------	--------------------------------------

Thinners and Cleaners



With high-performance integrated primer, basecoat and top seal systems, it is important that no one element is compromised, causing the possible failure of the system.

With this in mind, Nullifire have developed a range of thinners and cleaners suitable for their systems. These products are specially formulated, taking into account the active ingredients of the products with which they are combined, so as not to lessen the functionality of the coating and give maximum performance.

Failure to use the correct thinner or cleaner, as specified in Nullifire's product technical data sheets, could result in the non-performance of the products and the voiding of any product warranties, specific or implied. For more information on thinners and cleaners, please contact our Technical Services Department.

Product Selector									
	Basecoats	PM015	PM018	PM019	PM020	PM021	TS134	TS815	TS816
Thinner	Refer to TDS	FC002	FC002	FC002	FC010	FC002	FC025 Spray - FC215 roller	FC025	Clean Water
Cleaner	Refer to TDS	FC002	FC002	FC002	FC010 or FC002	FC002	FC002	FC002	Clean Water

Please consult the technical data sheet of all products before use.
Nullifire will not take responsibility for the performance/adhesion of products where other thinners/cleaners have been used.

Certification and Accreditation



Nullifire's passive fire protection solutions have been fully tested to the latest British and European standards, providing the highest levels of certification. Installing Nullifire products will provide a system that is not only fit for purpose today, but will meet changing legislation in the future.



tremco illbruck products are manufactured to rigid standards of quality. Any product which has been applied (a) in accordance with tremco illbruck written instructions and (b) in any application recommended by tremco illbruck, but which is proved to be defective, will be replaced free of charge. No liability can be accepted for the information provided in this leaflet although it is published in good faith and believed to be correct.

tremco illbruck Limited reserves the right to alter product specifications without prior notice, in line with Company policy of continuous development and improvement.

tremco illbruck and its Strong Brands



tremco illbruck is a European manufacturer and service provider of high-performance sealing, bonding, flooring, waterproofing, and passive fire protection for the construction and manufacturing industries. We ensure that your processes become faster, smarter, more efficient. And more enjoyable. Every time.



Nullifire

Nullifire helps reduce the complexities of passive fire protection. Fire safety regulations are complicated and potentially involve the threat of liability. To cope with these challenges we deliver a focused range of rigorously tested products that cover a wide array of passive fire protection applications. Nullifire's expert advice, support and training make for smart and simple solutions in passive fire protection.



TREMCO

TREMCO stands for lasting performance for flooring, waterproofing and in-plant glazing. The construction world is faced with ever more exacting requirements and longevity is essential for every application. We offer all the services and support you need, from specification reports to on-site support. With our nine decades of market experience we help you achieve the results you are looking for – with excellent lasting performance.



illbruck

illbruck adds perfection – to all your sealing and bonding projects. Be it windows, façades, interiors and exteriors, a major construction scheme or a minor refurbishment job. We offer the right set of products, services and expertise to lessen your workload and improve the overall climate of buildings. Making it perfect.





tremco illbruck Limited
Coupland Road, Hindley Green
Wigan WN2 4HT, United Kingdom

T. +44 (0)1942 251400
F. +44 (0)1942 251410
protect@nullifire.com
www.nullifire.com