

# SAY HELLO TO MORELLO

Technical expertise and  
efficient installation  
combine in this exciting  
regeneration project.

“Aquarian’s Gebrik cladding  
helped us achieve a quick,  
efficient build programme.”

**DAMIEN TREANOR**  
DIRECTOR, ERRIGAL FACADES





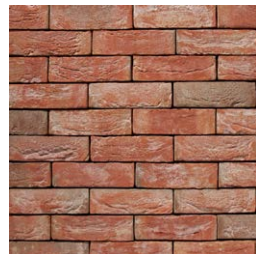
## PROJECT NAME

MORELLO,  
ORCHARD ROAD,  
CROYDON

## BRICK FINISH



VS71-28



VS71-41

## CLIENT / DEVELOPER

Menta Redrow

## INSTALLER

Errigal Facades

## ARCHITECT

Axis Architects

A landmark development designed by Axis Architects for Menta Redrow, Morello comprises four blocks ranging from 8 to 17 stories. Together, they provide 300 residential units behind a layered façade of over 12,000m<sup>2</sup> of Gebrik cladding installed by Errigal Facades. The project epitomises the best in contemporary construction and now forms a key part of an exciting new regeneration zone in south London.

Described by developer Menta Redrow as “the beginning of an exciting new era for Croydon” the Morello development forms part of a £1 billion regeneration reshaping the area as a desirable place to live and work.

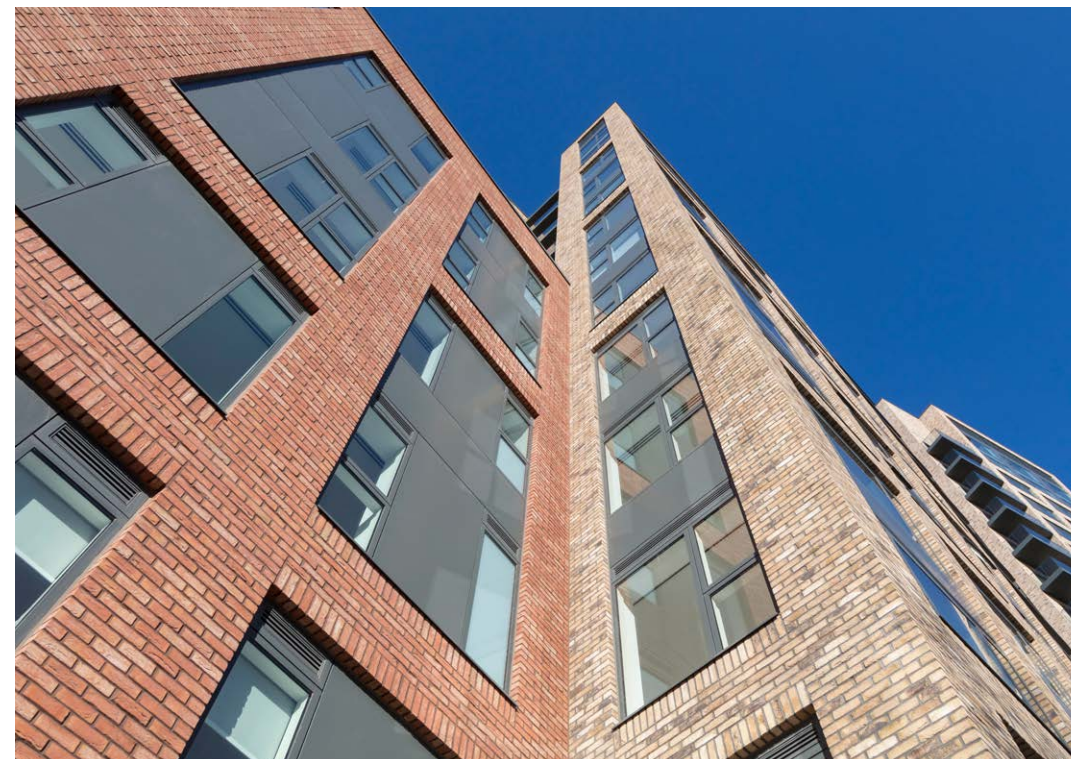
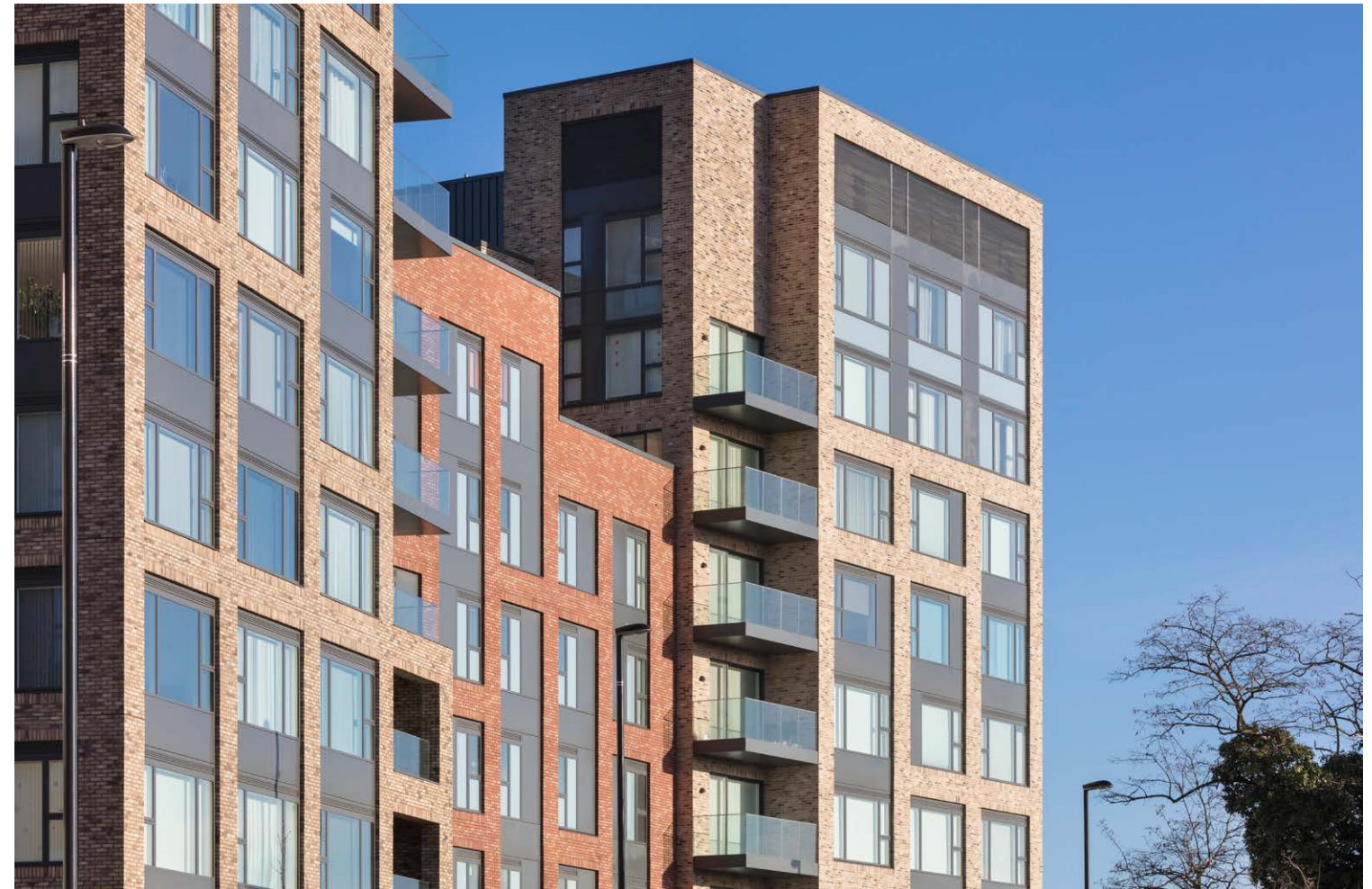
Gebrik was considered an ideal solution to enable all program targets to be hit and, on the basis of their ability to deliver a project on this scale, Errigal Facades was selected by Redrow from the Aquarian Approved Installer Network to install the unique brick cladding system - completing all four blocks over a 16 month period.

Errigal Director Damien Treanor comments: “The use of Gebrik helped us achieve a quick, efficient build programme with a lightweight brick cladding solution. Logistical issues on site, such as structural support, access and storage, were significantly reduced - this was particularly important as all vehicles approaching the site during construction had to be held in an offsite holding bay before being authorised to deliver.” As Gebrik arrived in load sizes of approx. 600m<sup>2</sup>, Errigal received around 70% fewer deliveries than would typically be expected for brick loads. Damien continues: “each pallet contained approx. 25m<sup>2</sup> of panels, so our storage requirements were also reduced - by around 65% compared to brick.”

Aquarian were on hand with expert technical support, ensuring that all stakeholders, including warranty provider NHBC, were satisfied that the

BBA certificate and BR135 large scale fire report were appropriate for the through-wall construction process used on the building.

The end result? Another high-profile project completed with great success. Already drawing favourable comparisons to other local projects, Morello is a unique development in an exemplary location. It is a project we’re proud to present as a showcase of Aquarian’s expert service and support as well as a perfect example of Gebrik - our robust, intelligent and innovative brick cladding system.



“Logistical issues such as structural support, access and storage, were significantly reduced.”

**DAMIEN TREANOR**  
DIRECTOR, ERRIGAL FACADES

