

pavatex
by SOPREMA



MULTIFUNCTIONAL
INSULATION

PAVATEX PRODUCT PACK



SOPREMA
GROUP

PAVATEX

Multifunctional insulation solutions for the building envelope.

PAVATEX has been successfully used on thousands of UK-based projects. Our range of solutions are tried, tested and trusted by house builders, commercial developers, housing associations and local authorities.

Our specification support helps you ensure the right product specification on a given building type. PAVATEX solutions provide thermal, moisture, acoustic and overheating control.



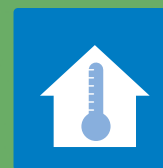
Thermal performance

Good thermal performance is now prerequisite to any new build or renovation. However, breathability and overheating control **must** also be considered simultaneously to protect the integrity of the building fabric and ensure that significant problems are not created.



Breathability

Over 11½ litres of moisture are produced internally by the average household each day. The external shell of a building is much like a coat, it needs to keep the rain off, but like a **GORE-TEX** jacket, it must not allow moisture, produced internally, to get trapped within the building fabric. It must let it out. **Pavatex** is the **GORE-TEX** of buildings.



Overheating

Low level heat is needed to raise the internal temperature in winter. Insulation keeps this heat in. The sun produces high level heat which can lead to overheating in the summer. Conventional insulation, in structures such as roofs and timber frame buildings, can't keep high level heat out. **Pavatex** has thermal mass which 'soaks up' the heat from the sun helping to prevent summertime overheating.

Product Sheets

Pavatex Woodfibre

| | |
|--------------|----|
| Isolair | 6 |
| Pavadry | 7 |
| Pavatherm | 8 |
| Reveal Board | 9 |
| Pavaflex | 10 |

Membranes

Pavatex Tapes and Seals

Tools

Fixings

Plinth Board

11

12

15

16

26

System Sheets

New Build

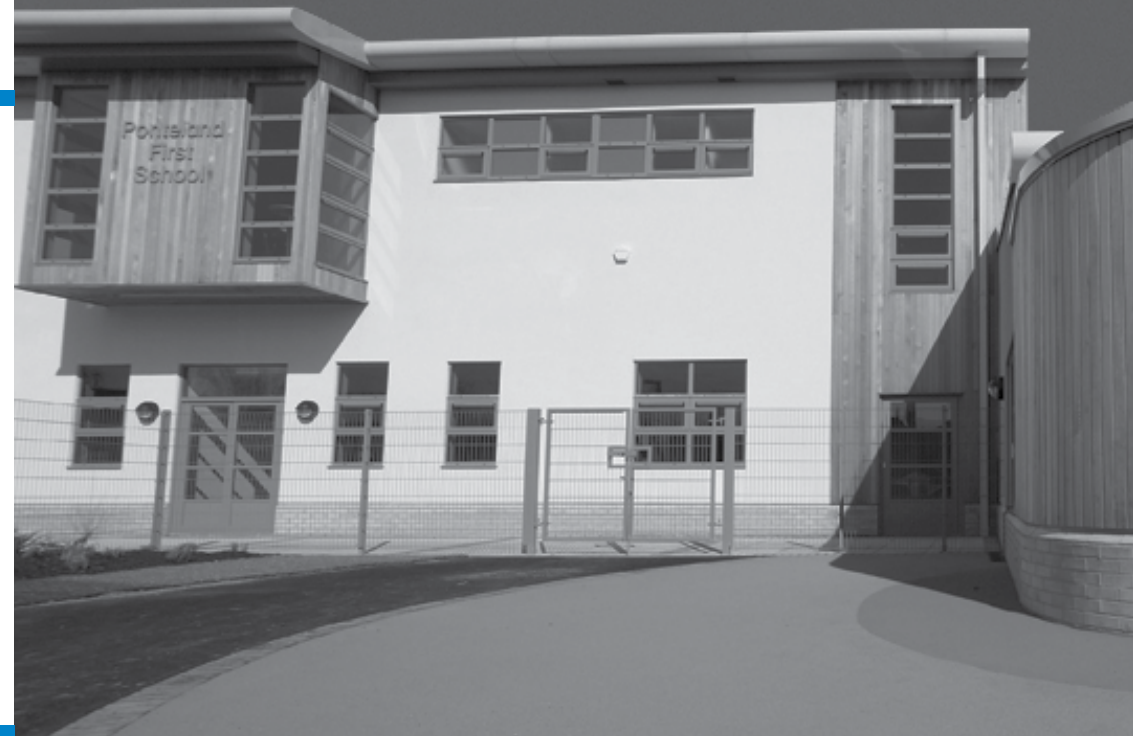
| | |
|----------------------------------|----|
| External Timber Frame Clad | 28 |
| External Timber Frame Brick Clad | 30 |
| External Timber Frame Render | 32 |
| Cross Laminated Timber Render | 34 |
| Cross Laminated Timber Clad | 36 |
| Pitched Roof | 38 |
| Flat Roof | 40 |

Retrofit

| | |
|--------------------------------|----|
| IWI* Lime Plastered Finish | 42 |
| IWI* Dry Lined Wall | 44 |
| EWI** Rendered Wall | 46 |
| EWI** Clad Wall | 48 |
| Internally Fitted Pitched Roof | 50 |
| Externally Fitted Pitched Roof | 52 |

*internal wall insulation **external wall insulation

Product Sheets





Universal Woodfibre Insulation Board for cladding, tiling, plaster and render.

Application -

- **Roof** - over or under rafter
- **Wall** - on to studs or existing masonry

Finishes - Clad or tile, can be brick clad. Plaster or Render

Fixed - Mechanical Fixings

Storage - Store dry and protected from damage. Only install when dry. Stack no more than 4 pallets on top of each other.

Resilience - Can be left exposed up to 90 days

Available in full or split pallets

| Thickn. [mm] | Weight [kg/sqm] | Board dim.# [cm] | Number of boards | Pallet covers [sqm] | per pallet [kg] | Pallet dim. [cm] [L x W x H] | Edge profile |
|--------------|-----------------|------------------|------------------|---------------------|-----------------|------------------------------|--------------|
| 30 | 6.40 | 248 x 75 | 37 | 68.80 | 440 | 250 x 77 x 124 | T & G |
| 40 | 8.20 | 178 x 56 | 56 | 55.82 | 458 | 180 x 120 x 124 | T & G |
| 60 | 12.30 | 178 x 56 | 36 | 31.90 | 393 | 180 x 120 x 124 | T & G |
| 80 | 16.40 | 178 x 56 | 28 | 27.91 | 504 | 180 x 120 x 124 | T & G |
| 100 | 14.50 | 178 x 56 | 22 | 21.93 | 358 | 180 x 120 x 124 | T & G |
| 120* | 17.40 | 178 x 56 | 18 | 17.94 | 352 | 180 x 120 x 124 | T & G |
| 140* | 20.30 | 178 x 56 | 16 | 15.95 | 364 | 180 x 120 x 124 | T & G |
| 160* | 23.20 | 178 x 56 | 14 | 13.96 | 364 | 180 x 120 x 124 | T & G |
| 180* | 26.10 | 178 x 56 | 12 | 11.96 | 361 | 180 x 120 x 124 | T & G |
| 200* | 29.00 | 178 x 56 | 10 | 9.97 | 317 | 180 x 120 x 124 | T & G |

Technical data

| | |
|---------------------------------------------------------|---------------|
| Bulk density ρ [kg/m ³] | 200 / 145 |
| Thermal conductivity (EN 13171) I_p [W/(mK)] | 0.044 / 0.041 |
| Vapour diffusion resistance coefficient μ | 3 |
| Compressive stress at 10% compressive deformation [kPa] | 250 / 100 |
| Tensile strength perpendicular to plane of board [kPa] | 30 / 10 |

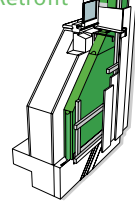
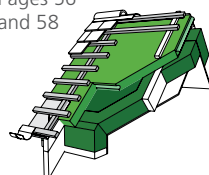
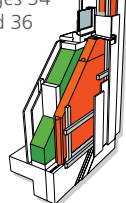
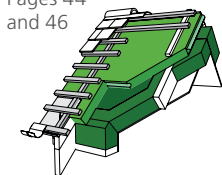
Product for:

Pavatex Pitched Roof System
New Build
Pages 44 and 46

Pavatex Clad System
New Build
Pages 34 and 36

Pavatex Roof System
Retrofit
Pages 56 and 58

Pavatex External Wall Insulation
Clad (EWI) **Retrofit**
Page 54



Dim. without the tongue
* Only available in full pallet load



PAVATEX System Guarantee:
Installed as recommended in technical manual with appropriate additional system components.



Internal Woodfibre Insulation (RETROFIT)

Application -

- **Wall** - masonry, masonry filled timber (internal)

Finishes - Standard plaster board

Fixed - Mechanical fixings & bonding plaster

Storage - Store dry and protected from damage. Only install when dry. Stack no more than 2 pallets on top of each other.

Available in full or split pallets

| Thickn. [mm] | Weight [kg/sqm] | Board dim. # [cm] | Number of boards | Pallet covers [sqm] | per pallet [kg] | Pallet dim. [cm] [L x W x H] | Edge profile |
|--------------|-----------------|-------------------|------------------|---------------------|-----------------|------------------------------|--------------|
| 52 | 15.88 | 101 x 59 | 84 | 50.06 | 816.36 | 205 x 120 x 115 | T & G |
| 72* | 19.38 | 101 x 59 | 60 | 35.75 | 711.63 | 205 x 120 x 115 | T & G |
| 92* | 22.88 | 101 x 59 | 48 | 28.60 | 672.12 | 205 x 120 x 115 | T & G |

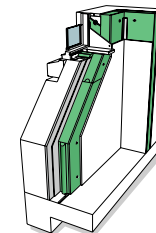
* Available while stocks last. Other sizes available, please contact Pavatex Technical Department.

Technical data

| | |
|-----------------------------------------------------------------------|--------------|
| Bulk density ρ [kg/m ³] (Pavadentro/Hardboard) | 175 / 740 |
| Thermal conductivity (EN 13171) I_p [W/(mK)] (Pavadentro/Hardboard) | 0.043 / 0.14 |
| Compressive stress at 10% compressive deformation [kPa] (Pavadentro) | 70 |
| Tensile strength perpendicular to plane of board [kPa] (Pavadentro) | 5 |

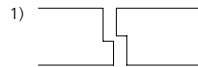
Product for System

Pavatex Internal Wall Insulation (IWI) **Retrofit**
Page 50



Dimensions without the tongue

PAVATEX System Guarantee:
Installed as recommended in technical manual with appropriate additional system components.



Woodfibre Insulation Boards

Application -

- **Roof** - over or under rafter with a base (ply/OSB) or on CLT
- **Wall** - on to studs with a base or existing masonry or on CLT
- **Floor** - between or under joists with a base

For all the external application the boards must be protected by appropriate Pavatex primary external boards or membrane.

Finishes - Subject to primary boards and application

Fixed - Subject to primary boards and application

Storage - Store dry and protected from damage. Only install when dry. Stack no more than 4 pallets on top of each other.

Available in full or split pallets

| Thickn. [mm] | Weight [kg/sqm] | Board dim. [cm] | Number of boards | Pallet covers [sqm] | per pallet [kg] | Pallet dim. [cm] [L x W x H] | Edge profile |
|--------------|-----------------|-----------------|------------------|---------------------|-----------------|------------------------------|-----------------------|
| 40 | 4.60 | 110 x 60 | 112 | 73.92 | 360 | 205 x 120 x 124 | Flat |
| 60 | 6.90 | 110 x 60 | 72 | 47.52 | 348 | 205 x 120 x 124 | Flat |
| 80 | 9.20 | 110 x 60 | 56 | 36.96 | 360 | 205 x 120 x 124 | Flat |
| 100 | 11.50 | 110 x 60 | 44 | 29.04 | 354 | 205 x 120 x 124 | Flat |
| 120* | 13.80 | 110 x 60 | 36 | 23.80 | 348 | 205 x 120 x 124 | Flat |
| 140* | 16.10 | 110 x 60 | 32 | 20.31 | 360 | 205 x 120 x 124 | Shiplap ¹⁾ |
| 160* | 18.40 | 110 x 60 | 28 | 17.77 | 360 | 205 x 120 x 124 | Shiplap ¹⁾ |

Thickness 180 - 300 mm on request.

Technical data

| | |
|---------------------------------------------------------|-----------------|
| Bulk density ρ [kg/m ³] | 110 |
| Thermal conductivity (EN 13171) I_D [W/(mK)] | 0.038 |
| Vapour diffusion resistance coefficient μ | 3 ¹⁾ |
| Compressive stress at 10% compressive deformation [kPa] | 50 |
| Tensile strength perpendicular to plane of board [kPa] | 2.5 |

Product for System

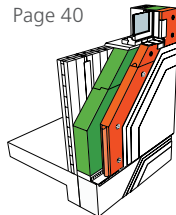
Secondary board to increase the thickness of Pavatex Insulation Systems. Please contact Pavatex for details

A solid base (ply/OSB) must be used if applied on to rafters or studs

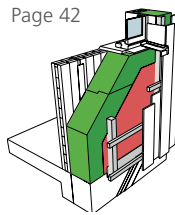
Board surface is not suitable for render or plaster

Can be used between studs and rafters

Pavatex Render System
Cross Laminate Timber
Render **New Build**
Page 40



Pavatex Clad System
Cross Laminate Timber
Clad **New Build**
Page 42



Woodfibre Insulation Reveal Boards

Application -

- **Wall** - on to studs or existing masonry or on CLT frame

Finishes - Render/Clad or subject to application

Fixed - According to application

Storage - Store dry and protected from damage. Only install when dry. Stack no more than 2 pallets on top of one another.

Resilience - Can be left exposed up to 60 days

Available in full or split pallets

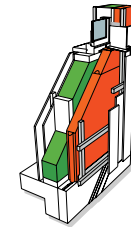
| Thickn. [mm] | Board dim. [cm] | Number of boards | Pallet covers [sqm] | per pallet [kg] | Edge profile |
|--------------|-----------------|------------------|---------------------|-----------------|--------------|
| 30 | 110 x 60 | 148 | 97.7 | 454 | Straight |
| 40 | 110 x 60 | 112 | 73.9 | 458 | Straight |

Technical data

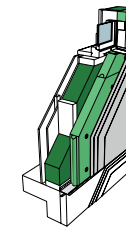
| | |
|---------------------------------------------------------|-------|
| Bulk density ρ [kg/m ³] | 155 |
| Thermal conductivity (EN 13171) I_D [W/(mK)] | 0.043 |
| Vapour diffusion resistance coefficient μ | 3 |
| Compressive stress at 10% compressive deformation [kPa] | 100 |
| Tensile strength perpendicular to plane of board [kPa] | 15 |

Product for System

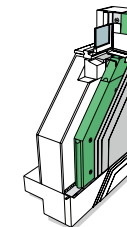
Pavatex Clad System
New Build
Pages 34
and 36



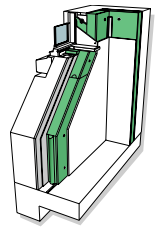
Pavatex Rendered System
New Build
Page 38



Pavatex External Wall Insulation
Rendered (EWI) **Retrofit**
Page 52



Pavatex Internal Wall Insulation (IWI) **Retrofit**
Pages 48 and 50



* only available in full pallet load



PAVATEX System Guarantee:
Installed as recommended in technical manual
with appropriate additional system components.



PAVATEX System Guarantee:
Installed as recommended in technical manual
with appropriate additional system components.

Flexible Woodfibre Insulation Slabs

Application -

- **Roof** - between rafter
- **Wall** - between studs
- **Floor** - between joists

Finishes - N/A

Fixed - Subject to application

Storage - Store dry and protected from damage.
Only install when dry. Pallets **must not** be stacked.



PAVAFLEX 575 For 600mm Rafter Centres (available in full or split pallets)

| Thickn. [mm] | Weight [kg/sqm] | Format [cm] | pack per pallet | batts per pack | Packs covers [sqm] | Pallet covers [sqm] | per pallet [kg] | Pallet dim. [cm] [L x W x H] | Edge profile |
|--------------|-----------------|-------------|-----------------|----------------|--------------------|---------------------|-----------------|------------------------------|--------------|
| 50 | 1.75 | 57.5 x 122 | 10 | 9 | 6.31 | 63.14 | 173 | 130 x 115 x 250 | Flat |
| 80 | 2.81 | 57.5 x 122 | 10 | 6 | 4.21 | 42.09 | 183 | 130 x 115 x 250 | Flat |
| 100 | 3.51 | 57.5 x 122 | 12 | 4 | 2.81 | 33.67 | 183 | 130 x 115 x 250 | Flat |
| 140 | 4.91 | 57.5 x 122 | 8 | 4 | 2.81 | 22.45 | 172 | 130 x 115 x 250 | Flat |

* Also available in full pallet quantities in 40, 60, 120, 160, 180, 200, 220, 240mm thickness.

Technical data

| | |
|------------------------------------------------------|-------|
| Bulk density ρ [kg/m³] | 50 |
| Thermal conductivity (EN 13171) λ_D [W/(mK)] | 0.038 |

PAVAFLEX 375 For 400mm Rafter Centres (available in full or split pallets)

| Thickn. [mm] | Weight [kg/sqm] | Format [cm] | pack per pallet | batts per pack | Packs covers [sqm] | Pallet covers [sqm] | per pallet [kg] | Pallet dim. [cm] [L x W x H] | Edge profile |
|--------------|-----------------|-------------|-----------------|----------------|--------------------|---------------------|-----------------|------------------------------|--------------|
| 50 | 1.14 | 37.5 x 122 | 15 | 9 | 4.12 | 61.76 | 155 | 130 x 115 x 250 | Flat |
| 80 | 1.83 | 37.5 x 122 | 15 | 6 | 2.75 | 41.18 | 165 | 130 x 115 x 250 | Flat |
| 100 | 2.29 | 37.5 x 122 | 18 | 4 | 1.83 | 32.94 | 165 | 130 x 115 x 250 | Flat |
| 140 | 3.20 | 37.5 x 122 | 12 | 4 | 1.83 | 27.45 | 192 | 130 x 115 x 250 | Flat |

* Please contact for other thicknesses. Generally, full truck only.

Technical data

| | |
|------------------------------------------------------|-------|
| Bulk density ρ [kg/m³] | 50 |
| Thermal conductivity (EN 13171) λ_D [W/(mK)] | 0.038 |

Product for System

Flexible insulation used between studs and rafters as part of many of the Pavatex insulation systems
Surface is not suitable for render or plaster



PAVATEX System Guarantee:
Installed as recommended in technical manual
with appropriate additional system components.



Flexible insulation board with better λ value

Application -

- **Roof** - between rafters
- **Wall** - between rafters
- **Floor** - between rafters

Finishes - N/A

Fixed - Subject to application

Storage - Store dry and protected from damage.
Only install when dry. Pallets **must not** be stacked.



Available in full or split pallets

| Thickn. [mm] | Boards/pallet | Boards/package | Dimensions(1) [mm] | m²/pallet [m²] | Mass/pallet [kg] | Thermal resistance (R_D) [m².K/W] | Edge profile |
|--------------|---------------|----------------|--------------------|----------------|------------------|---------------------------------------|--------------|
| 30 | 150 | 16 | 1220 x 575 | 112.24 | 204 | 0.80 | Straight |
| 40 | 112 | 10 | 1220 x 575 | 84.18 | 204 | 1.10 | Straight |
| 50 | 90 | 9 | 1220 x 575 | 63.1 | 204 | 1.35 | Straight |
| 60 | 72 | 8 | 1220 x 575 | 56.12 | 197 | 1.65 | Straight |
| 80 | 56 | 6 | 1220 x 575 | 42.09 | 204 | 2.20 | Straight |
| 100 | 40 | 4 | 1220 x 575 | 28.1 | 183 | 2.75 | Straight |
| 120 | 32 | 4 | 1220 x 575 | 22.4 | 177 | 3.30 | Straight |
| 140 | 32 | 4 | 1220 x 575 | 22.4 | 204 | 3.85 | Straight |
| 160 | 28 | 3 | 1220 x 575 | 21.05 | 204 | 4.40 | Straight |
| 180 | 24 | 3 | 1220 x 575 | 16.8 | 197 | 5.00 | Straight |
| 200 | 20 | 2 | 1220 x 575 | 14.0 | 183 | 5.55 | Straight |
| 220 | 20 | 2 | 1220 x 575 | 14.0 | 200 | 6.10 | Straight |
| 240 | 16 | 2 | 1220 x 575 | 11.2 | 177 | 6.65 | Straight |

* Please contact for other thicknesses. Generally, full truck only.

Technical data

| | |
|------------------------------------------------------|-------|
| Bulk density ρ [kg/m³] | 60 |
| Thermal conductivity (EN 13171) λ_D [W/(mK)] | 0.036 |

Product for System

Flexible insulation used between studs and rafters as part of many of the Pavatex insulation systems
Surface is not suitable for render or plaster

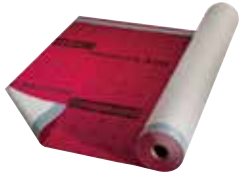


PAVATEX System Guarantee:
Installed as recommended in technical manual
with appropriate additional system components.



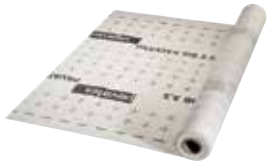
Membranes

Breathable Membrane: ADB



Breathable membrane with two-way integrated self-adhesive strips. For external use.
0.03m Sd

Air Tight Membrane: DB 3.5



Internal vapour control and airtight membrane. Pavafix 60 tape range & Pavatape flex to seal the overlaps, corners, penetrations etc.
3.5m Sd

| Roll Width [m] | Roll Length [m] | Roll Area [m²] | Roll Weight [kg] |
|----------------|-----------------|----------------|------------------|
| 1.50 | 50.00 | 75.00 | 9 |

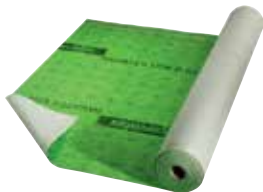
Over Rafter/CLT Air Tight Membrane: DSB 2



Vapour control and airtight membrane with two-way integrated self-adhesive strips. Applied from outside of truss roof, CLT or similar. Max. exposure time - 60 days. Use Pavatape 12 to seal vertical overlaps.

| Roll Width [m] | Roll Length [m] | Roll Area [m²] | Roll Weight [kg] |
|----------------|-----------------|----------------|------------------|
| 1.50 | 50.00 | 75.00 | 13 |

Retrofit Membrane: LDB 0.02

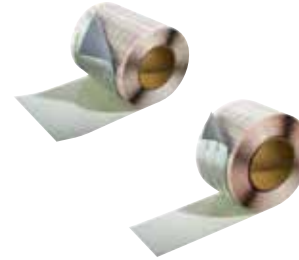


Vapour-open airtight membrane with two-way integrated self-adhesive strips. Suitable for existing roof and wall retrofit from outside. min. 35mm insulation on the outside of membrane to avoid condensation.
0.02 Sd

| Roll Width [m] | Roll Length [m] | Roll Area [m²] | Roll Weight [kg] |
|----------------|-----------------|----------------|------------------|
| 1.50 | 50.00 | 75.00 | 14 |

Tapes and Seals

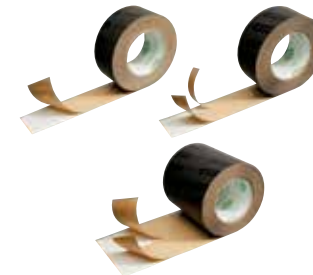
Pavatape: 75/150



Aluminium-Laminated Butyl rubber tape for external sealing of non-Tongue & Groove joints of PAVATEX-boards. PAVABASE or PAVAPRIM primer is required when applying on to wood fibre boards and other porous or mineral surfaces.

| | Box weight [kg] | Roll length [m] | Roll width [mm] | Box contents [units] |
|--------------|-----------------|-----------------|-----------------|----------------------|
| Pavatape 75 | 13.0 | 15 | 75 | 6 |
| Pavatape 150 | 13.3 | 15 | 150 | 4 |

Pavafix 60/20-40/150



Acrylic adhesive tape for sealing internal OSB/ply or membrane for airtightness. Can be used externally when sheltered. Black in colour. PAVABASE or PAVAPRIM primer is required when applying on to wood fibre boards and other porous or mineral surfaces.

| | Box weight [kg] | Roll length [m] | Roll width [mm] | Box contents [units] | Uses |
|---------------|-----------------|-----------------|-----------------|----------------------|-------------|
| Pavafix 60 | 2.8 | 25 | 60 | 4 | Flat joints |
| Pavafix 20-40 | 2.8 | 25 | 60 | 4 | Corners |
| Pavafix 150 | 3.2 | 25 | 150 | 2 | All purpose |

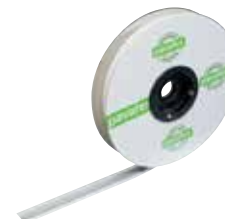
Pavatape FLEX



Stretchable butyl rubber tape for internal or external sealing of PAVATEX-boards and membranes at penetrations and complicated junctions. PAVABASE or PAVAPRIM primer is required when applying on to wood fibre boards and other porous or mineral surfaces.

| | Box weight [kg] | Roll length [m] | Roll width [mm] | Box contents [units] |
|---------------|-----------------|-----------------|-----------------|----------------------|
| Pavatape FLEX | 10.8 | 5 | 80 | 8 |

Pavatape 12



Universal double-sided mastic tape for sealing PAVATEX-membranes overlaps and edges to masonry. PAVABASE or PAVAPRIM primer is required when applying on to wood fibre boards and other porous surfaces.

| | Box weight [kg] | Roll length [m] | Roll width [mm] | Box contents [units] |
|-------------|-----------------|-----------------|-----------------|----------------------|
| Pavatape 12 | 2 | 10 | 12 | 3 |

Tapes and Seals

Pavafix WIN



Plasterable/renderable airtight tape with fleece surface, 3-way split backing tape for indoor/outdoor sealing, especially around openings.

| | Box weight [kg] | Roll length [m] | Roll width [mm] | Box contents [units] |
|-------------|-----------------|-----------------|-----------------|----------------------|
| Pavafix WIN | 4 | 25 | 90 | 4 |

Pavafix SN Tape



Screw and nail-sealing tape. Prevent the penetration of moisture at nail and screw location under the counter battens.

| | Box weight [kg] | Roll length [m] | Roll width [mm] | Box contents [units] |
|-----------------|-----------------|-----------------|-----------------|----------------------|
| Pavafix SN Band | 2.4 | 30 | 55 | 9 |

Pavaprim



Solvent-free quick dry primer for PAVATAPE and other PAVATEX TAPES

| | Contents per container [ml] | Box contents [units] | Coverage |
|--------|-----------------------------|----------------------|----------------------|
| Bottle | 1000 | 6 | 25m of Pavatape 150 |
| | | | 55m of Pavatape 75 |
| | | | 50m of Pavatape Flex |
| | | | 125m of Pavatape 12 |
| | | | 62.5m of Pavafix 60 |

Tapes and Seals

Pavacoll



Solvent-free adhesive for sealing PAVATEX boards, membranes and for other wet sealing application.

| | Contents per container (ml) | Box contents [units] | Accessories included | Coverage [ml/m] |
|-------------|-----------------------------|----------------------|--------------------------|-----------------|
| Cartridge | 310 | 12 | 12 snap-off nozzles | 26 |
| Tubular bag | 600 | 10 | 10 large conical nozzles | |

Pavabond



High strength connection adhesive cartridge for sealing PAVATEX membranes overlaps and edges to masonry.

| | Contents per container (ml) | Box contents [units] | Accessories included | Coverage [ml/m] |
|-----------|-----------------------------|----------------------|----------------------|-----------------|
| Cartridge | 310 | 20 | 20 snap-off nozzles | 30 |

ISO-Bloco 600



High quality joint sealing expansion tape for external use.

| | Tape width [mm] | Recommended expansion range [mm]* | Roll length [m] | Box contents [unit] |
|----------|-----------------|-----------------------------------|-----------------|---------------------|
| 12/2-6 | 12 | 2-6 | 12 | 25 |
| 15/6-15 | 15 | 6-15 | 4.3 | 20 |
| 25/11-25 | 25 | 11-25 | 2.6 | 12 |

Tools

Insulation Knife for Pavaflex

Special knife for cutting Pavaflex.



| Length [mm] | Pack Content |
|-------------|--------------|
| 330 | 1 Blades |

Fixings

STR H



Thermally broken washer, self-tapping fixings to anchor wall Insulation systems for **timber and sheet steel (max. 0.75mm) substrate**.

| Length [mm] | Thread Diameter [mm] | Washer Diameter [mm] | Drive System | Box Contents [units] | Timber Embedment [mm] | Included |
|--------------------------------------|----------------------|----------------------|--------------|----------------------|-----------------------|------------|
| 80-300 With the increment of 20mm | 6 | 60 | TORX® T25 | 100 | 40 | STR-U PLUG |

H1 eco



Thermally broken washer, nylon plug with steel pin (hammer action) fixings to anchor wall Insulation systems for **solid masonry substrate**.

| Length [mm] | Drill Hole Diameter [mm] | Washer Diameter | Drive System | Box Contents [units] | Masonry Embedment [mm] |
|----------------------------------------|--------------------------|-----------------|------------------|----------------------|------------------------|
| 95 – 295 With the increment of 20mm | 8 | 60 | Hammer-in anchor | 100 | 35 |

STR U



Thermally broken washer, nylon sleeve, self-tapping fixings to anchor wall Insulation systems for **light weight or solid masonry substrate**.

| Length [mm] | Drill Hole Diameter [mm] | Washer Diameter | Drive System | Box Contents [units] | Masonry Embedment [mm] | Required component [separate order] |
|----------------------------------|--------------------------|-----------------|--------------|----------------------|------------------------|-------------------------------------|
| 115 - 415 with 20mm increment | 8 | 60 | TORX® T30 | 100 | 35 to 65 | STR-U PLUG |

H3



Thermally broken washer, nylon plug with nylon pin (hammer action) fixings to anchor Internal Wall Insulation systems for **solid masonry substrate**.

| Length [mm] | Drill Hole Diameter [mm] | Washer Diameter | Drive System | Box Contents [units] | Masonry Embedment [mm] |
|-----------------------------------|--------------------------|-----------------|------------------|----------------------|------------------------|
| 75-155 with the increment of 20mm | 8 | 60 | Hammer-in anchor | 200 | 35 |
| 175 with the increment of 20mm | 8 | 60 | Hammer-in anchor | 100 | 35 |

Fixings

Heco-Topix Countersunk



Countersunk head with milling grooves, part threaded bright zinc plated and self-tapping fixings for timber substrate. To fix woodfibre insulation onto Cross Laminated Timber (CLT) or timer. Contact for fixings calculations.

| Length [mm] | Thread Diameter [mm] | Drive System | Box Contents [units] | Timber Embedment [mm] |
|-----------------------------------------------------|----------------------|-----------------------|----------------------|-----------------------|
| 60-300 @ 6 Dia & 80-500 @ 8 Dia with 20mm increment | 6 & 8 | TORX® T25 & TORX® T40 | 100 | 40 or as calculated |

Heco-Topix Therm Countersunk



Countersunk head with milling grooves, double threaded bright zinc plated and self-tapping fixings for timber substrate. To provide, additional load support on roof insulated with woodfibre insulation onto Cross Laminated Timber (CLT) or timber rafters. Contact for fixings calculations.

| Length [mm] | Thread Diameter [mm] | Drive System | Box Contents [units] | Timber Embedment [mm] |
|-----------------------------|----------------------|--------------|----------------------|-----------------------|
| 160-500 with 20mm increment | 8 | TORX® T40 | 50 | 40 or as calculated |

VHT R 4.8



Counter sunk, self-drilling and self-tapping fixings for **timber and sheet steel substrate**.

| Length [mm] | Thread Diameter [mm] | Drive System | Steel Drilling [mm] | Box Contents [units] | Timber Embedment [mm] | Steel Embedment [mm] |
|----------------------------|----------------------|--------------|---------------------|----------------------|-----------------------|----------------------|
| 60-200 with 20mm increment | 4.8 | P2 Recess | 0.7-1.2 | 100 | 40 | 15 |

Also available in stainless steel - please contact Pavatex

SW8 R 4.8



Hex head, self-drilling and self-tapping fixings for **timber and sheet steel substrate**.

| Length [mm] | Thread Diameter [mm] | Drive System | Steel Drilling [mm] | Box Contents [units] | Timber Embedment [mm] | Steel Embedment [mm] |
|----------------------------------------------------------------|----------------------|------------------|---------------------|----------------------|-----------------------|----------------------|
| 60, 80 - 180 with 10mm increment & 200-260 with 20mm increment | 4.8 | Hexagon A/F8 8mm | 0.7-1.2 | 100 | 40 | 15 |

Fixings

MRS-U



Self-tapping, counter sunk wall screw with pre drill hole for **solid masonry substrate**.

| Length [mm] | Thread Diameter [mm] | Drill Hole Diameter [mm] | Drive System | Box Contents [units] | Masonry Embedment* [mm] |
|-----------------------|----------------------|--------------------------|--------------|----------------------|-------------------------|
| 100, 130, 150 & 180mm | 7.5 | 6 | TORX® T30 | 50 | 40 |

MQL-ST plug & screw



Nylon sleeve, screw, counter sunk fixings for **light weight and solid masonry substrate**.

| Length [mm] | Drill Hole Diameter [mm] | Drive System | Box Contents [units] | Masonry Embedment [mm] |
|--------------------------------------|--------------------------|--------------|----------------------|------------------------|
| 100 – 160 with the increment of 20mm | 8 | TORX® T30 | 100 | 70 |
| 180 & 200mm | 10 | T/40 | 100 | 70 |

Insulation Washers

SBL & VT washer



KC washer



SBL & VT are load spreading disc washers to secure the insulation board edges at external corners and around openings where the substrate is far from the board edges.

KC washers are used in conjunction with recommended timber/steel fixings for Render and Plaster insulation systems.

| Product | Washer Diameter [mm] | Box Contents [units] |
|---------|----------------------|----------------------|
| SBL 140 | 140 | 10 |
| VT 90 | 90 | 10 |
| KC | 60 | 200 |

Plinth Board

Pavatex Plinth and Perimeter Boards

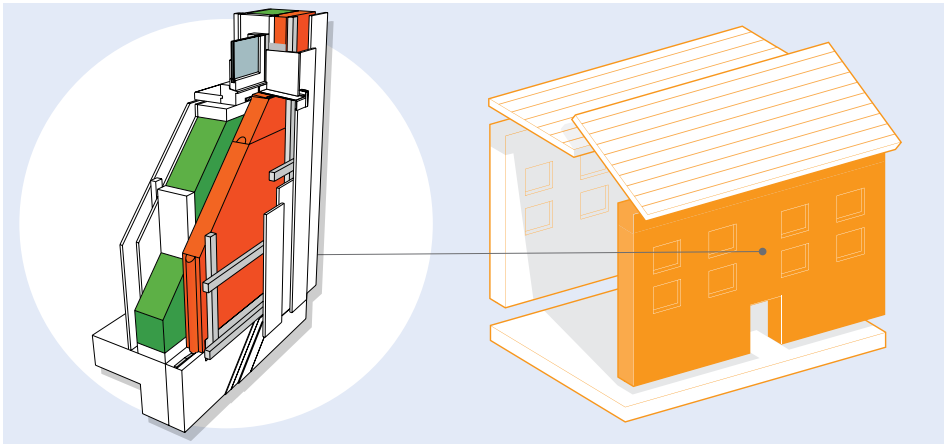


| Thickness [mm] | Board Dimensions [mm] | Boards per Pack | Pack Covers [m2] | Packs per Pallet |
|----------------|-----------------------|-----------------|------------------|------------------|
| 40 | 1250 x 600 | 10 | 7.50 | 10 |
| 60 | 1250 x 600 | 7 | 5.25 | 10 |
| 80 | 1250 x 600 | 5 | 3.75 | 10 |
| 100 | 1250 x 600 | 4 | 3.00 | 10 |

System Sheets



New Build System for Timber Frame Clad

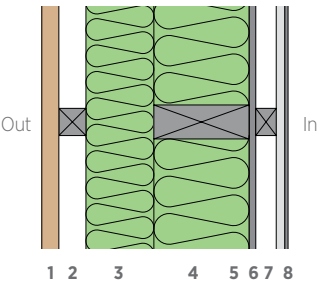


System Performance

u - values 0.26 – 0.10
y - values 0.05 – 0.02
airtightness 5 – 0.6 @50pa

The system complies with the most stringent of standards – from baseline building regulations through to Passivhaus. The system is suitable for all external clad finishing options including brick, stone, timber, zinc, etc. All components for the system are available from Soprema.

Plan-section of system

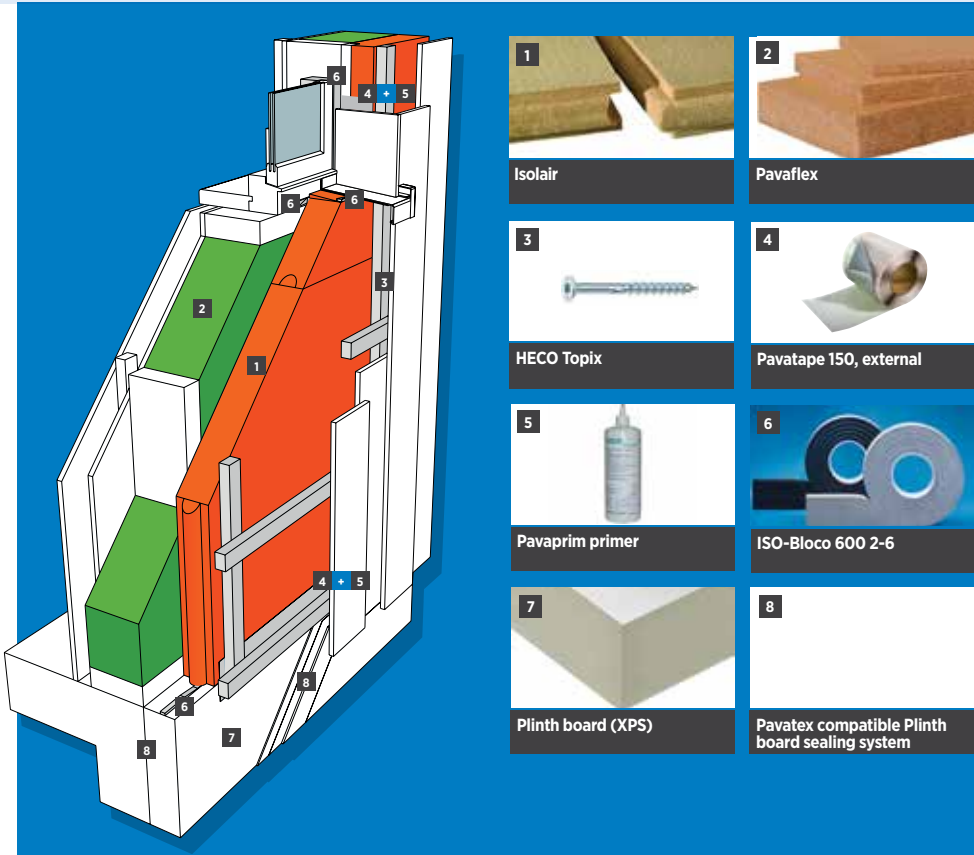


1. Cladding system (timber, brick, screen etc.)
2. Battened to create a 40mm ventilated void
3. Isolair 30/40/60/80/100/120mm
4. Stud & PAVAFLEX
5. Racking board incl. airtightness detail (e.g. OSB 12/15 mm)
6. Service void 25 mm - optional
(can be insulated for improved performance)
7. Plasterboard 12.5 mm
8. Plaster, skim

How Pavatex systems compare to standard build

| | | | | |
|---------------------|----------------------------|------------------|---------------|-------------------------------|
| Thermal performance | Summertime Heat Protection | Sound insulation | Breathability | Very low environmental impact |
|---------------------|----------------------------|------------------|---------------|-------------------------------|

Components & Accessories for Pavatex System for Timber Frame: Clad



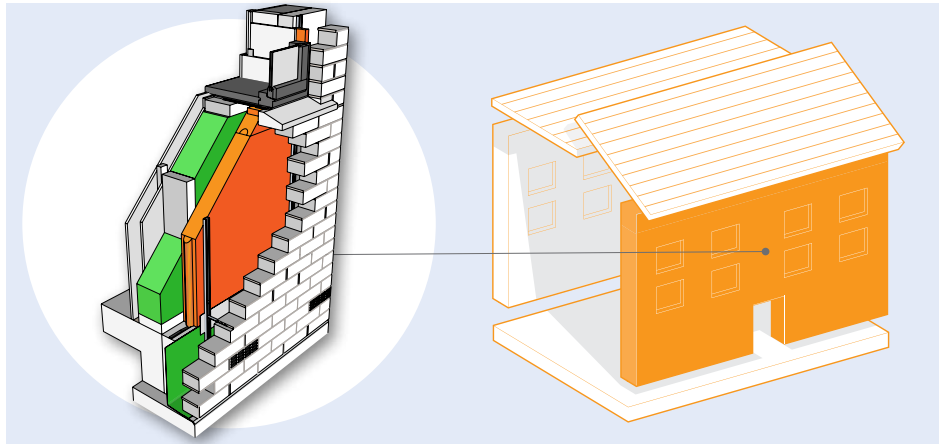
| | |
|-------------------------|-----------------------------------------------------|
| 1 Isolair | 2 Pavaflex |
| 3 HECO Topix | 4 Pavatape 150, external |
| 5 Pavaprim primer | 6 ISO-Bloco 600 2-6 |
| 7 Plinth board (XPS) | 8 Pavatex compatible Plinth board sealing system |

* Please refer to the contents page of this pack to find more information about the range of Pavatex products

System build up



New Build System for Timber Frame Brick Clad



System Performance

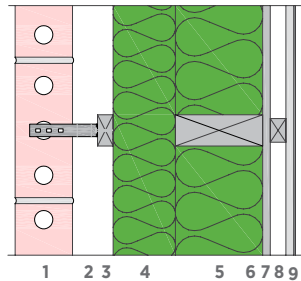
u - values 0.26 – 0.10

y - values 0.05 – 0.02

airtightness 5 – 0.6 @50pa

The system complies with the most stringent of standards – from baseline building regulations through to Passivhaus. The system is suitable for most external clad options including brick & stone. All components for the system are available from Soprema.

Plan-section of system

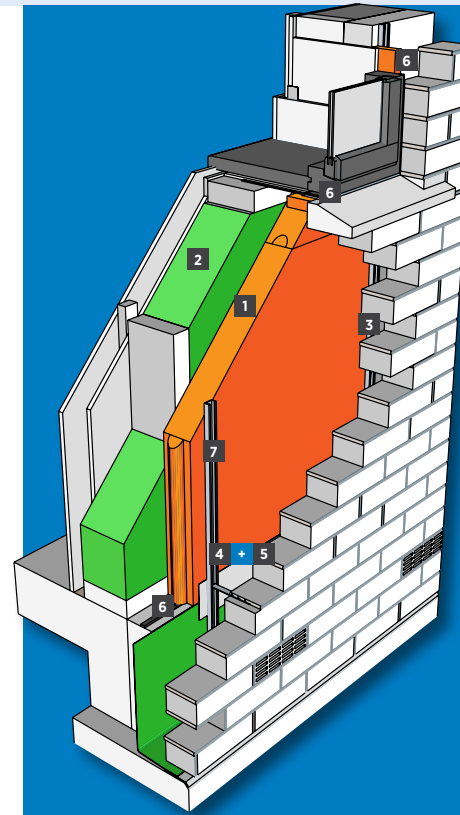


1. Brick Clad
2. Ancon SD 25 Wall Ties or similar
3. Ancon 25/14 Channels or similar
4. Isolair 30/40/60/80/100/120mm
5. Stud & Pavatex PAVAFLEX
6. Racking board incl. airtightness detail (e.g. OSB 12/15 mm)
7. Service void 25 mm - optional
(can be insulated for improved performance)
8. Plasterboard 12.5 mm
9. Plaster, skim

How Pavatex systems compare to standard build



Components & Accessories for Pavatex System for Timber Frame: Brick Clad



Isolair



Pavaflex



STR-H (for temporary fixing of the boards)



Pavatape 150, external



Pavaprim primer



ISO-Bloco 600 2-6



Ancon 25/14 Restraint System**

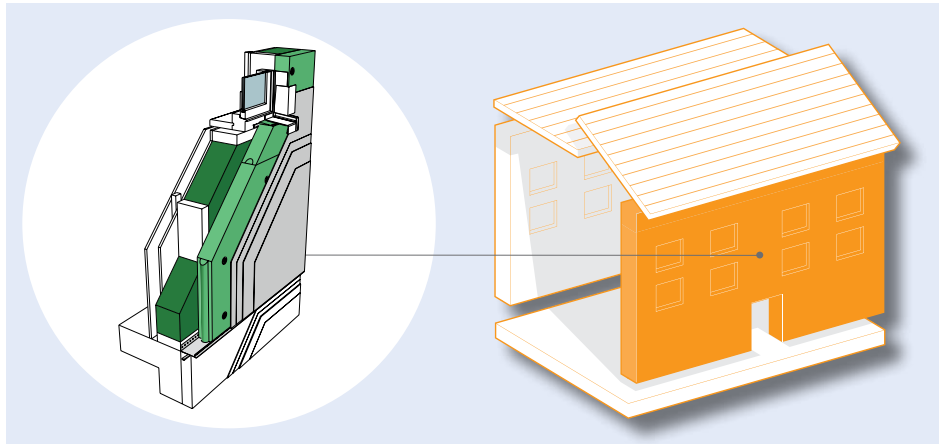
* Please refer to the contents page of this pack to find more information about the range of Pavatex products

** Not supplied by Soprema

System build up



New Build System for Timber Frame Render



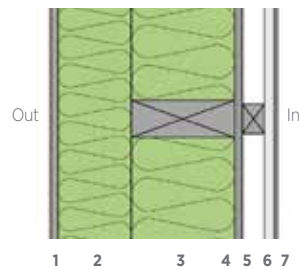
System Performance

u - values 0.26 – 0.10

y - values 0.05 – 0.02

The system complies with the most stringent of standards – from baseline building regulations through to Passivhaus. The system is available in an extensive number of render options including, colour, texture and weathering resistance. All components for the system are available from Soprema.

Plan-section of system

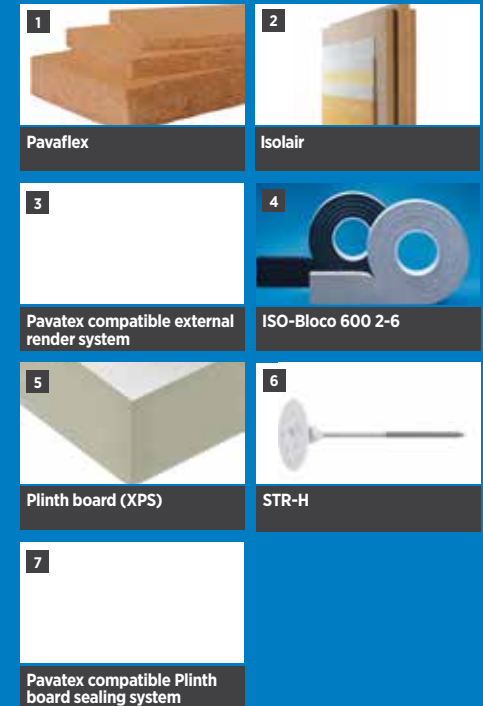
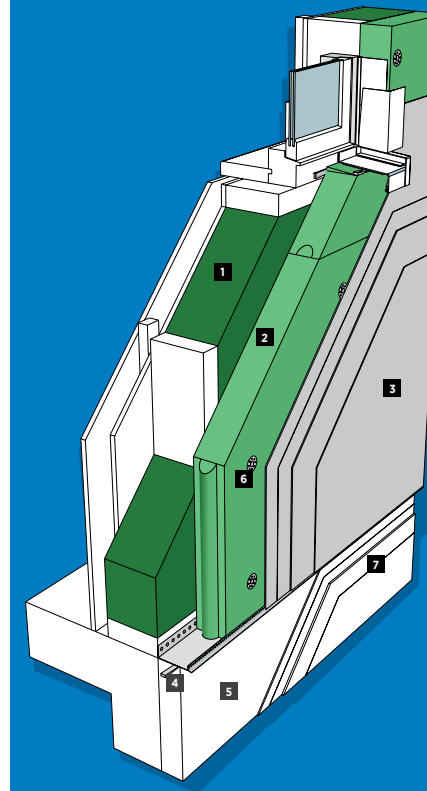


1. Pavatex compatible 2-coat render system
2. Isolair 40/60/80/100/120mm
3. Stud fully filled with PAVAFLEX
4. Racking board incl. airtightness detail (eg OSB 12/15mm)
5. Service void 25 mm
(can be insulated for improved performance)
6. Plasterboard 12.5 mm
7. Plaster, skim

How Pavatex systems compare to standard build



Components & Accessories for Pavatex System for Timber Frame: Render

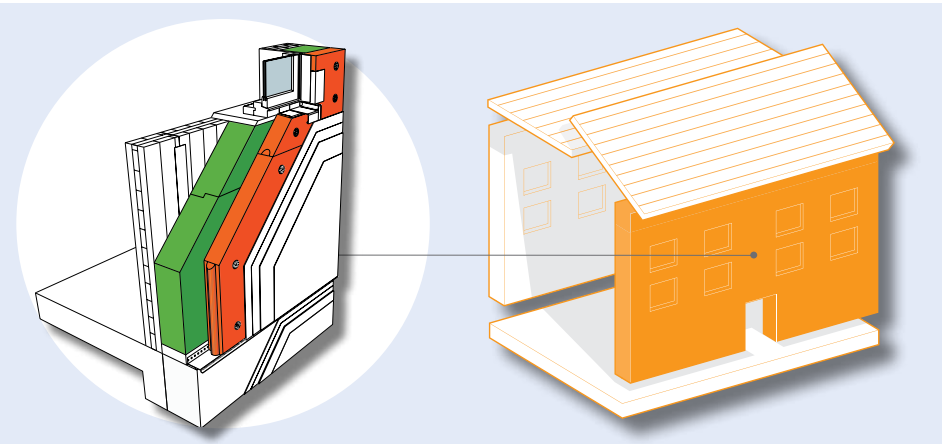


* Please refer to the contents page of this pack to find more information about the range of Pavatex products

System build up



New Build System for Cross Laminated Timber Render

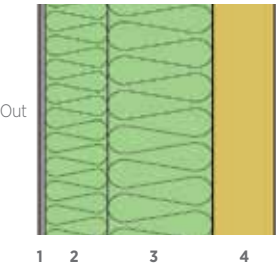


System Performance

u - values 0.26 – 0.10
y - values 0.05 – 0.02

The system complies with the most stringent of standards – from baseline building regulations through to Passivhaus. The system is available in an extensive number of render options including, colour, texture and weathering resistance. All components for the system are available from Soprema.

Plan-section of system



1. Pavatex 2-coat render system
2. Isolair 60mm
3. PAVATHERM standard 80/100/120/140mm or more
4. CROSS LAMINATED TIMBER STRUCTURE

How Pavatex systems compare to standard build

Thermal performance

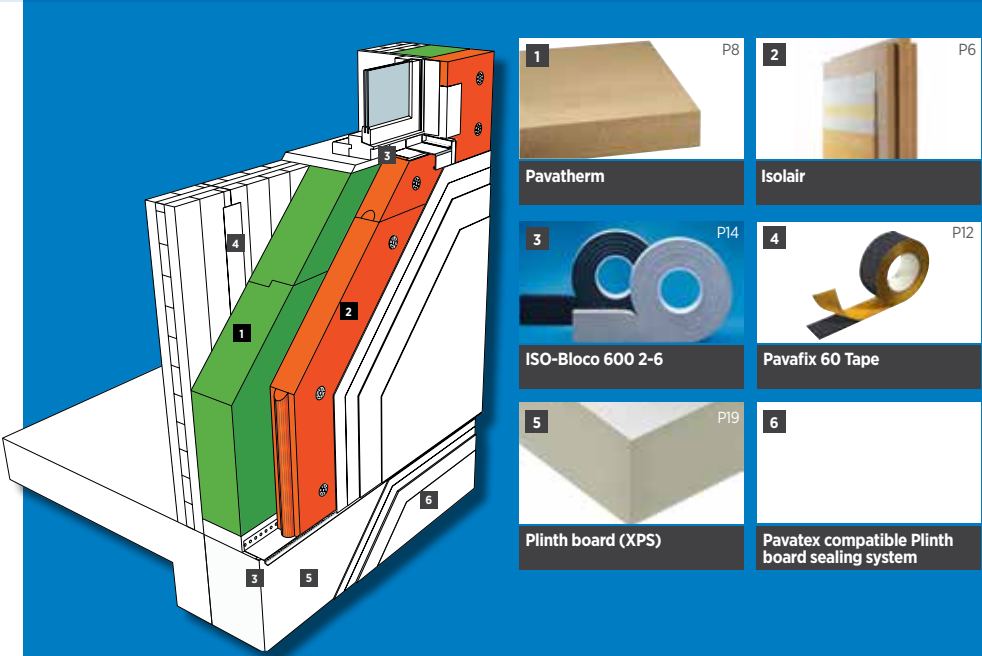
Summertime Heat Protection

Sound insulation

Breathability

Very low environmental impact

Components & Accessories for Pavatex System for Cross Laminated Timber: Render



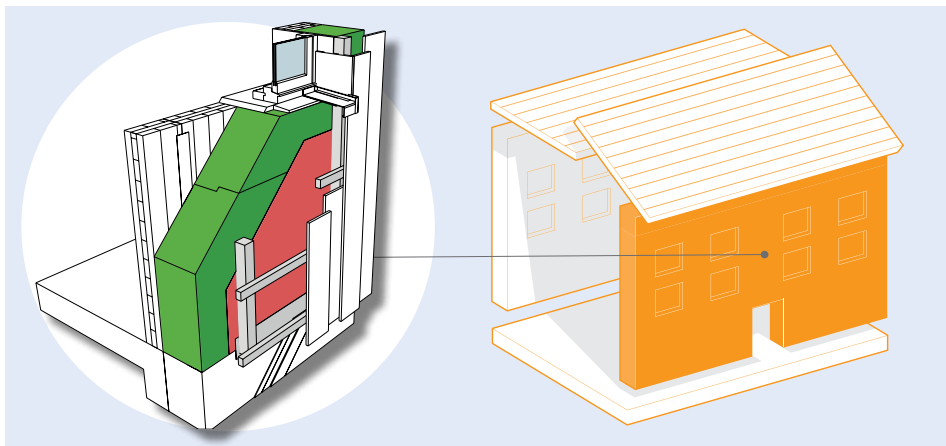
| | | | |
|--------------------|-----|------------------------------------------------|-----|
| 1 | P8 | 2 | P6 |
| Pavatherm | | Isolair | |
| 3 | P14 | 4 | P12 |
| ISO-Bloco 600 2-6 | | Pavafix 60 Tape | |
| 5 | P19 | 6 | |
| Plinth board (XPS) | | Pavatex compatible Plinth board sealing system | |

* Please refer to the contents page of this pack to find more information about the range of Pavatex products

System build up



New Build System for Cross Laminated Timber Clad



System Performance

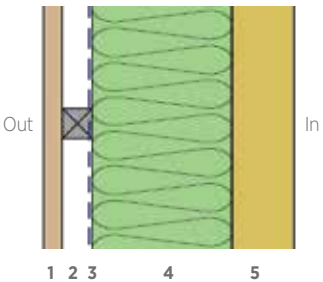
u - values 0.26 – 0.10

y – values 0.05 – 0.02

airtightness 5 – 0.6 @50pa

The system complies with the most stringent of standards – from baseline building regulations through to Passivhaus. The system is suitable for all external clad finishing options including brick, stone, timber, zinc, etc. All components for the system are available from Soprema.

Plan-section of system



1. Cladding system (timber, brick, screen etc.)
2. Battened to create a 50mm ventilated void
3. ABD (red)
4. PAVATHERM standard 80/100/120/140mm or more
5. CROSS LAMINATED TIMBER STRUCTURE

How Pavatex systems compare to standard build

Thermal performance

Summertime Heat Protection

Sound insulation

Breathability

Very low environmental impact

Components & Accessories for Pavatex System for Cross Laminated Timber: Clad

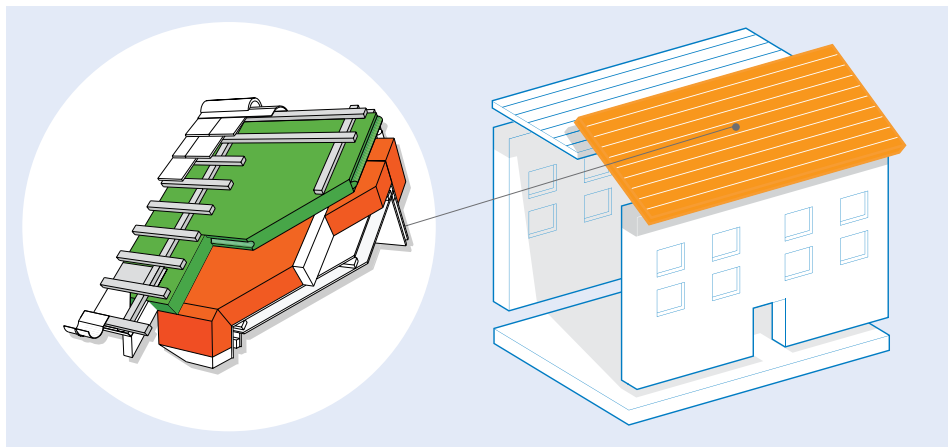
| | |
|-------------------------|-----------------------------------------------------|
| 1 Pavatherm | 2 ADB Breathable Membrane |
| 3 Pavafix 60 Tape | 4 Pavafix 150 Tape |
| 5 Pavaprim primer | 6 Heco Topix-Therm, double threaded fixings |
| 7 Plinth board (XPS) | 8 Pavatex compatible Plinth board sealing system |

* Please refer to the contents page of this pack to find more information about the range of Pavatex products

System build up



New Build System for Roof Pitched



System Performance

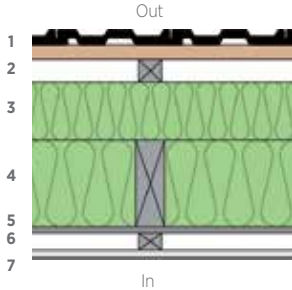
u - values 0.26 – 0.10

y - values 0.05 – 0.02

airtightness 5 – 0.6 @50pa

The system complies with the most stringent of standards – from baseline building regulations through to Passivhaus. The system is suitable for most external finishing options including metal, clay or slate tiling etc. All components for the system are available from Soprema.

Cross-section of system



- 1. Roofing (tiles, slates, tile batten etc.)
- 2. Counter battens 50 x 38 mm
- 3. Isolair 30/40/60/80/100/120mm
- 4. Rafters fully filled with Pavaflex
- 5. OSB (support & airtightness)
- 6. Service void 25 mm - optional (can be insulated for improved performance)
- 7. Plasterboard 12.5 mm with skim

How Pavatex systems compare to standard build

Thermal performance

Summertime Heat Protection

Sound insulation

Breathability

Very low environmental impact

Components & Accessories for Pavatex System for Roof: Pitched

Pitch $\geq 8^\circ$

Isolair

Pavaflex

HECO Topix

Pavatape 75

Pavaprim primer

Pavatape 150

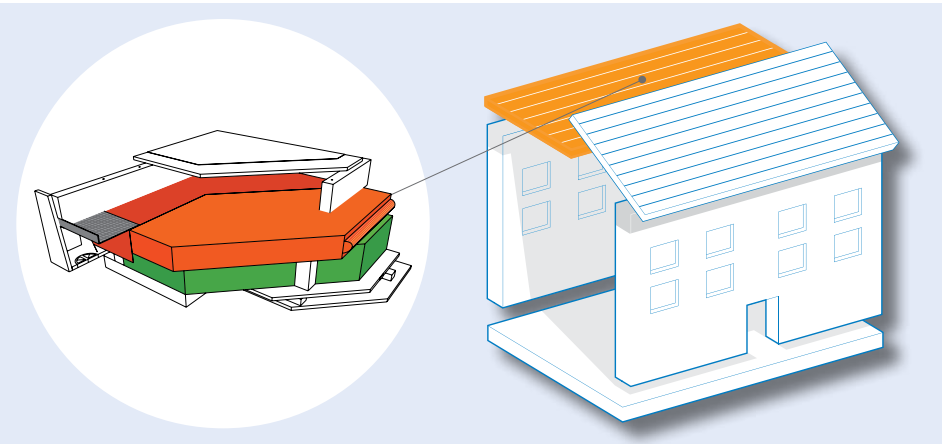
Eaves Vents

* Please refer to the contents page of this pack to find more information about the range of Pavatex products

System build up



New Build System for Roof Flat



System Performance

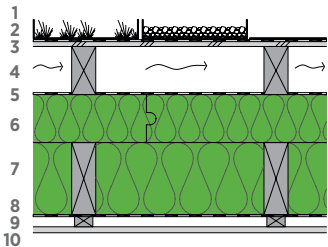
u - values 0.26 – 0.10

y - values 0.05 – 0.02

airtightness 5 – 0.6 @50pa

The system complies with the most stringent of standards – from baseline building regulations through to Passivhaus. The system is suitable for most external finishing options including sedum, metal, timber or similar decking. All components for the system are available from Soprema.

Cross-section of system



1. Finish covering (such as green roof or gravel)
2. EPDM
3. WBP Plywood
4. Battens for ventilation (100mm)
5. Breathable roofing membrane
6. Isolair
7. Rafters / PAVAFLEX
8. Airtightness membrane (taped)
9. Service void 25mm
10. Plasterboard 12.5mm

How Pavatex systems compare to standard build

Thermal performance

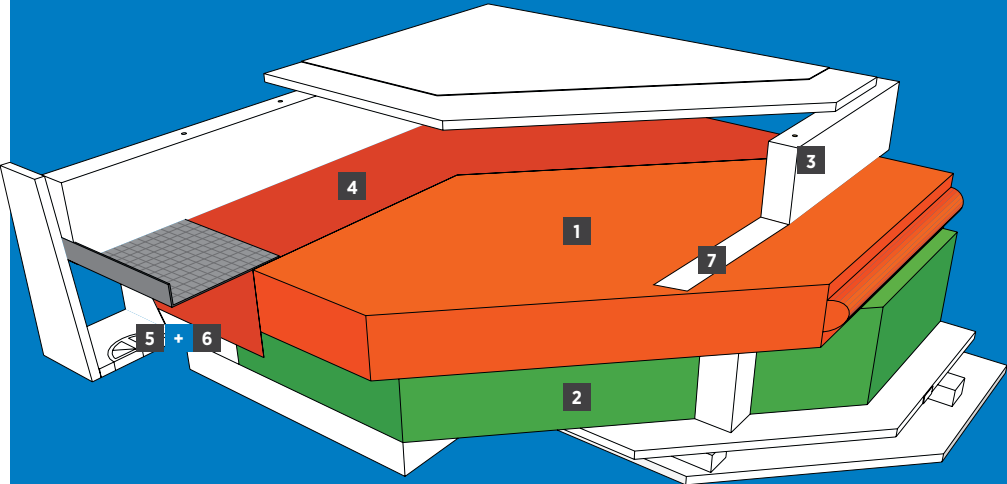
Summertime Heat Protection

Sound insulation

Breatability

Very low environmental impact

Components & Accessories for Pavatex System for Roof: Flat



Pitch ≥3°

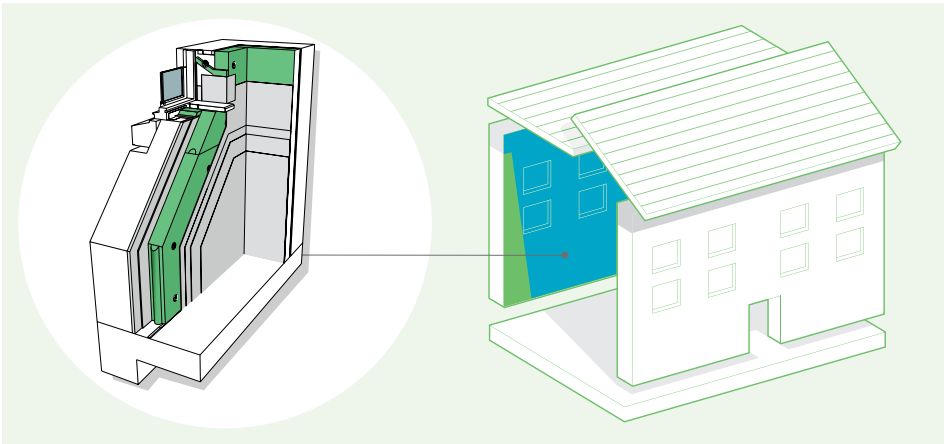
| | | | |
|-----------------|------------------------|--------------------------------------------------|--------------------------------|
| <p>Isolair</p> | <p>Pavaflex</p> | <p>Heco Topix-Therm, double threaded fixings</p> | <p>ADB Breathable Membrane</p> |
| <p>Pavatape</p> | <p>Pavaprim primer</p> | <p>Pavatex SN Band, Screw sealing tape</p> | |

* Please refer to the contents page of this pack to find more information about the range of Pavatex products

System build up



Retrofit System for Internal Wall Insulation Lime Plastered Finish



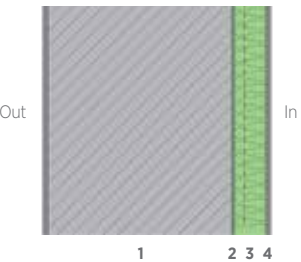
System Performance

u - values 0.60 – 0.28

airtightness 5 – 3 @50pa

A highly effective solution that eliminates the moisture risk associated with IWI. Pavatex IWI systems use **Isolair** to provide active moisture control through absorption and redistribution of moisture within a woodfibre board. The system combines the best of modern technological advances with natural, traditional materials; finished with a Pavatex compatible lime plaster that perfectly compliments traditional and modern wall finishes.

Plan-section of system

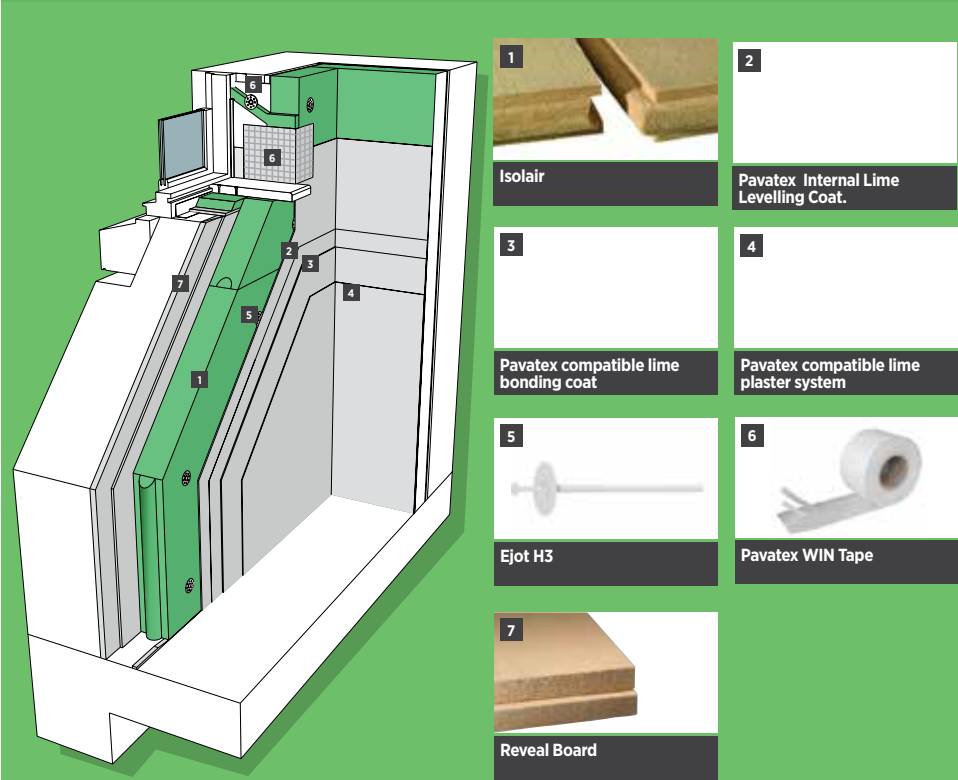









1. External wall (masonry/stone)
2. Pavatex compatible lime bonding coat
3. Pavadry
4. Pavatex compatible lime plaster system

How Pavatex systems compare to standard build



Components & Accessories for Pavatex Internal Wall Insulation System Lime Plastered Finish



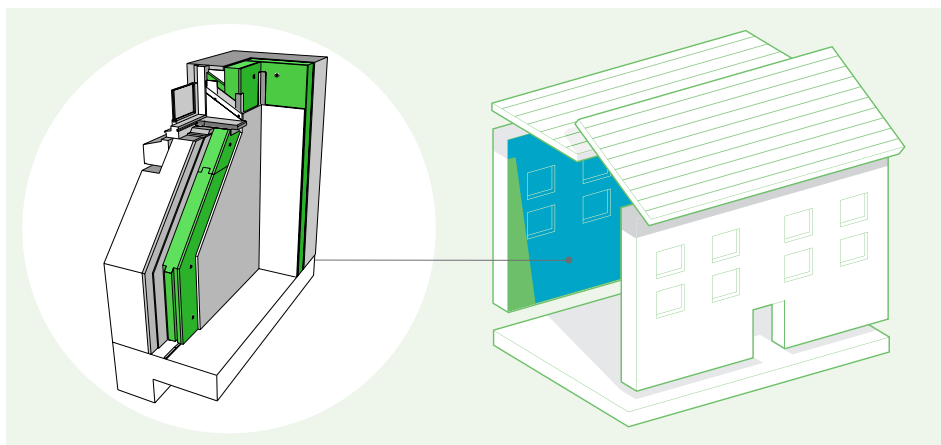
| | |
|----------------------------------------------------------------------------------------------------------------------------------|------------------------------------------------------------------------------------------------------------------------------------|
| 1  Isolair | 2  Pavatex Internal Lime Levelling Coat. |
| 3  Pavatex compatible lime bonding coat | 4  Pavatex compatible lime plaster system |
| 5  Ejot H3 | 6  Pavatex WIN Tape |
| 7  Reveal Board | |

* Please refer to the contents page of this pack to find more information about the range of Pavatex products

System build up



Retrofit System for Internal Wall Insulation Dry Lined



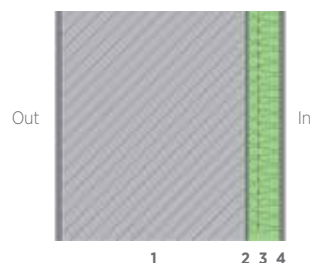
System Performance

u - values 0.60 – 0.28

airtightness 5 – 3 @50pa

A highly effective solution that eliminates the moisture risk associated with IWI. Pavatex IWI systems use **Pavadry** to provide active moisture control through absorption and redistribution of moisture within a woodfibre board and integral mineral layer. The system incorporates a composite board, that is drylined with plasterboard, providing a load bearing surface. Installed and made good within a day, the system provides a clean lined modern finish.

Plan-section of system

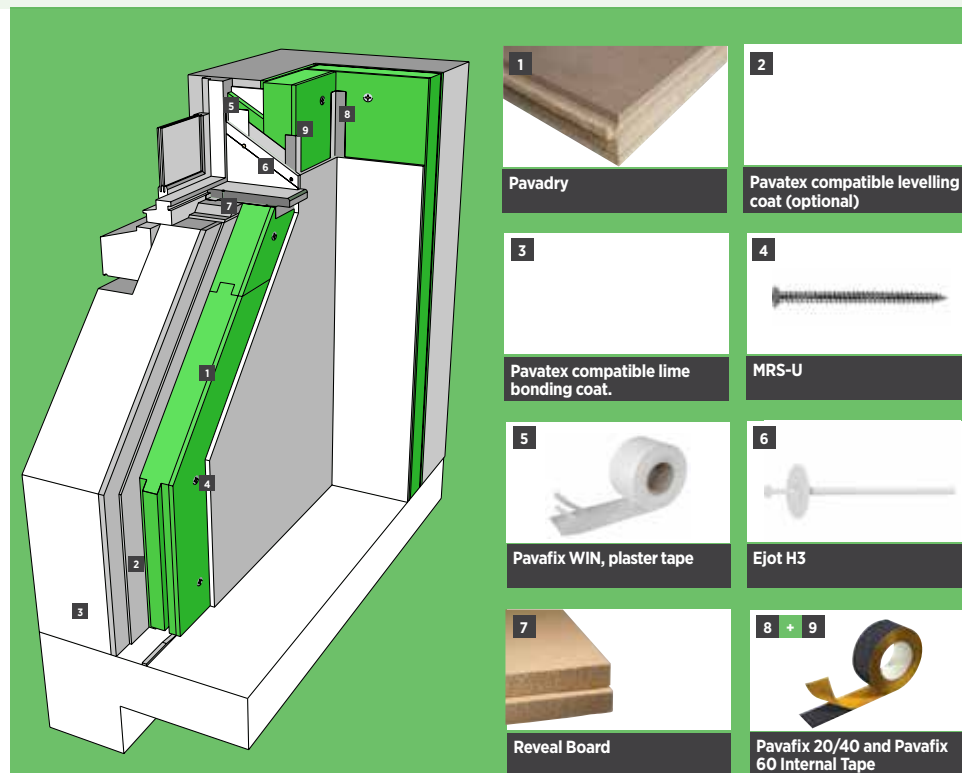


1. External wall (masonry/stone)
2. Pavatex absorbent plaster (min 5mm)
3. Pavatex Pavadry
4. Plasterboard or Fermacell board

How Pavatex systems compare to standard build



Components & Accessories for Pavatex Internal Wall Insulation System Dry Lined

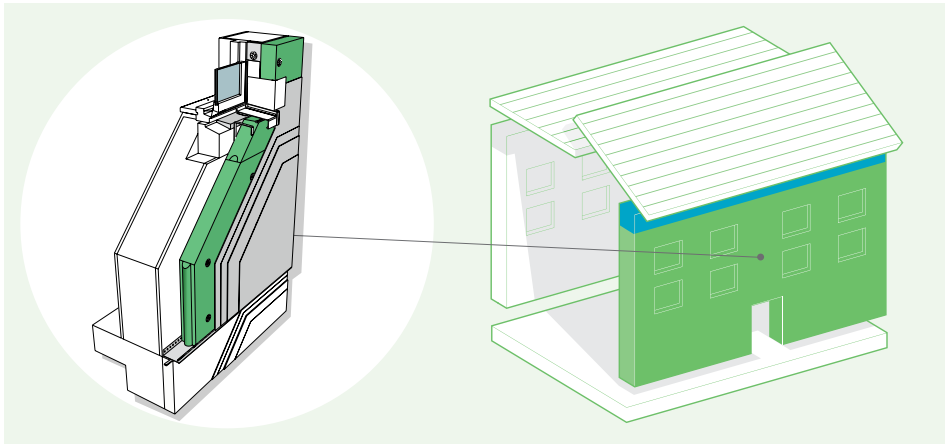


* Please refer to the contents page of this pack to find more information about the range of Pavatex products

System build up



Retrofit System for External Wall Insulation Rendered



System Performance

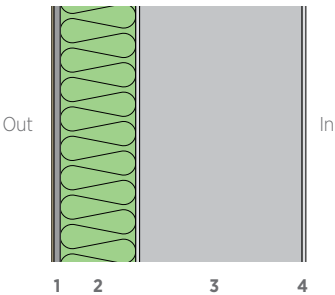
u - values 0.26 - 0.10

y - values 0.05 - 0.02

airtightness 5 - 0.6 @50pa

The system complies with the most stringent of standards – from baseline building regulations through to Passivhaus. The system is available in an extensive number of render options including, colour, texture and weathering resistance. All components for the system are available from Soprema.

Plan-section of system

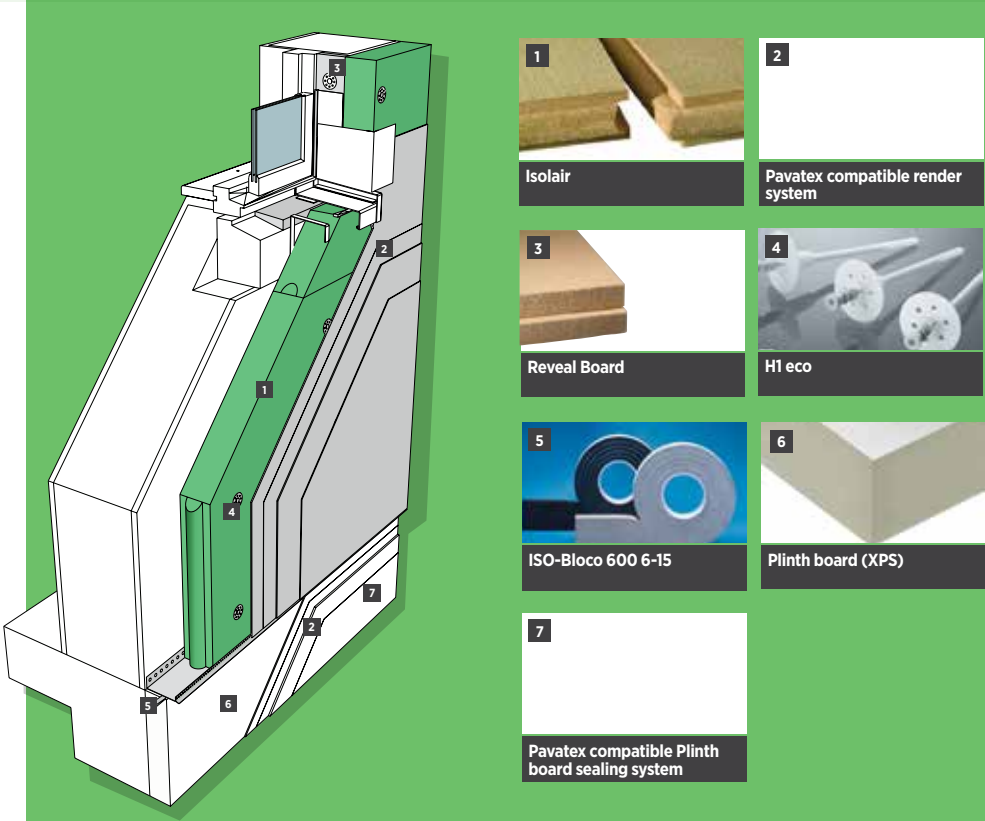


1. Pavatex 2-coat render system
2. Isolair 40/60/80/100/120/140/160mm
3. Masonry substrate
4. Plaster

How Pavatex systems compare to standard build



Components & Accessories for Pavatex External Wall Insulation System: Rendered

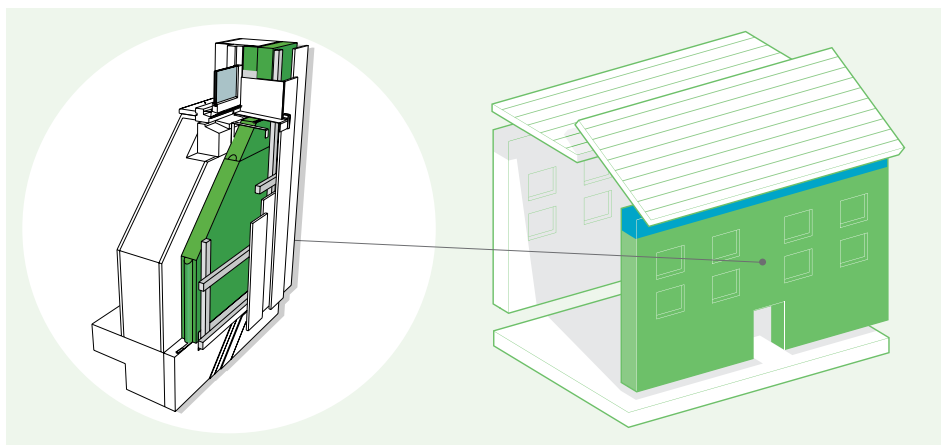


* Please refer to the contents page of this pack to find more information about the range of Pavatex products

System build up



Retrofit System for External Wall Insulation Clad



System Performance

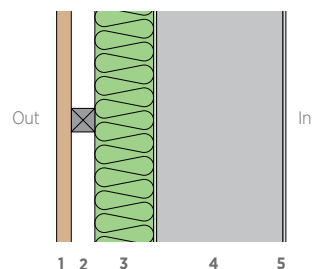
u - values 0.30 – 0.10

y - values 0.05 – 0.02

airtightness 5 – 0.6 @50pa

The system complies with the most stringent of standards – from baseline building regulations through to Passivhaus. The system is suitable for all external clad finishing options including brick, stone, timber, zinc, etc. All components for the system are available from Soprema.

Plan-section of system

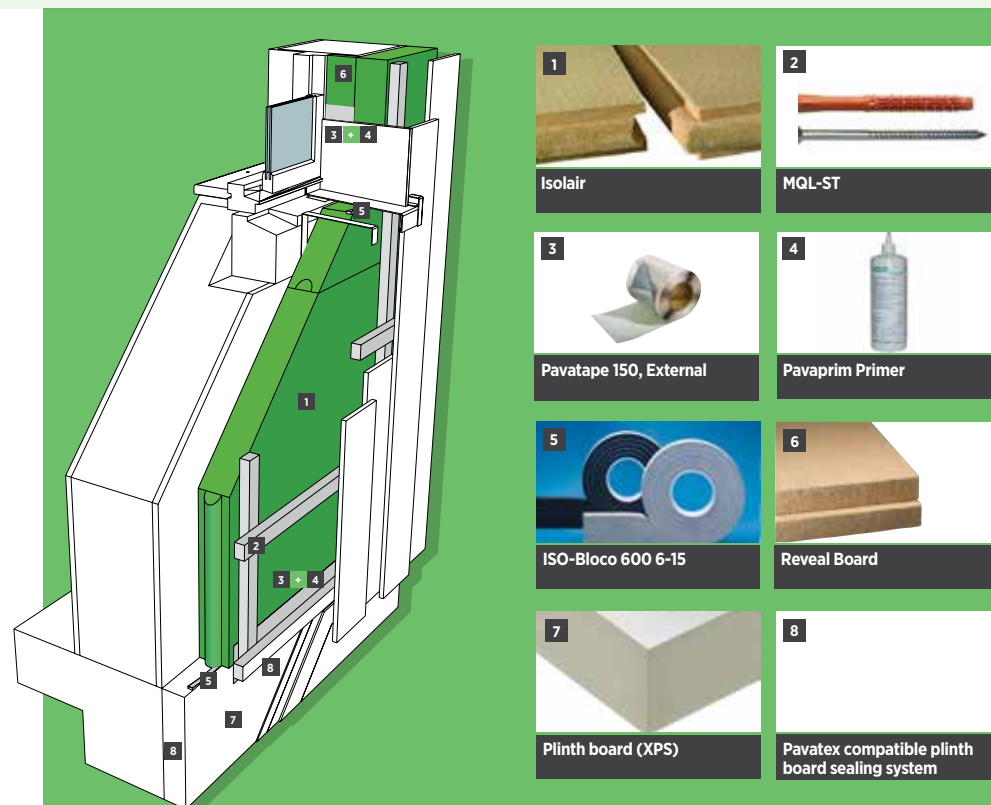


1. Cladding system (timber, brick, screen etc.)
2. Battened to create a 40mm ventilated void
3. Isolair 30/40/60/80/100/120mm
4. Masonry substrate
5. Plaster

How Pavatex systems compare to standard build



Components & Accessories for Pavatex External Wall Insulation System: Clad

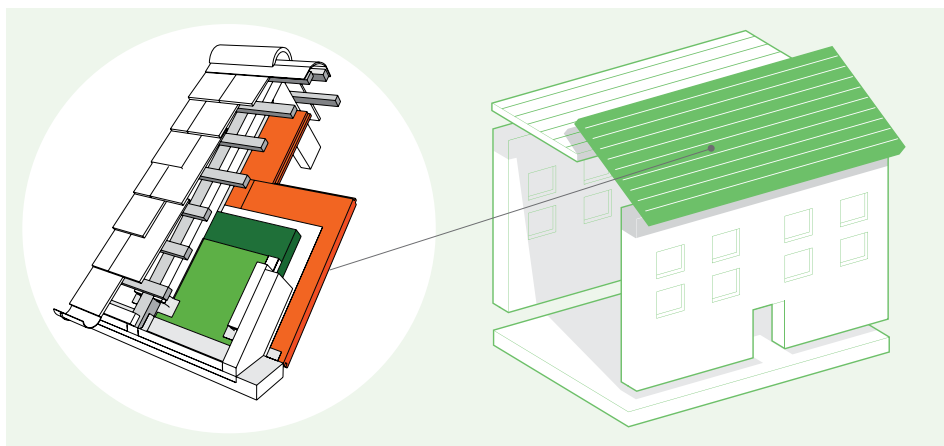


* Please refer to the contents page of this pack to find more information about the range of Pavatex products

System build up



Retrofit System for Roof Pitched Internally Fitted



System Performance

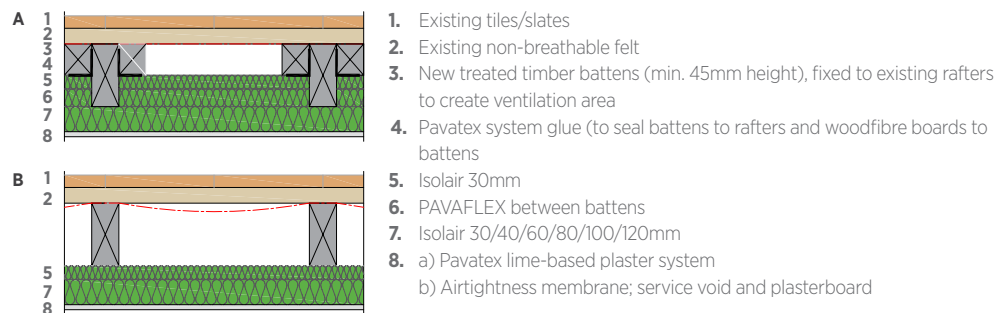
u - values 0.30 – 0.10

y - values 0.05 – 0.02

airtightness 5 – 0.6 @50pa

The system complies with the most stringent of standards – from baseline building regulations through to Passivhaus. The system is suitable for most internal finishing options including lime plaster, clay plaster or plaster board finish. All components for the system are available from Soprema.

Cross-section of system



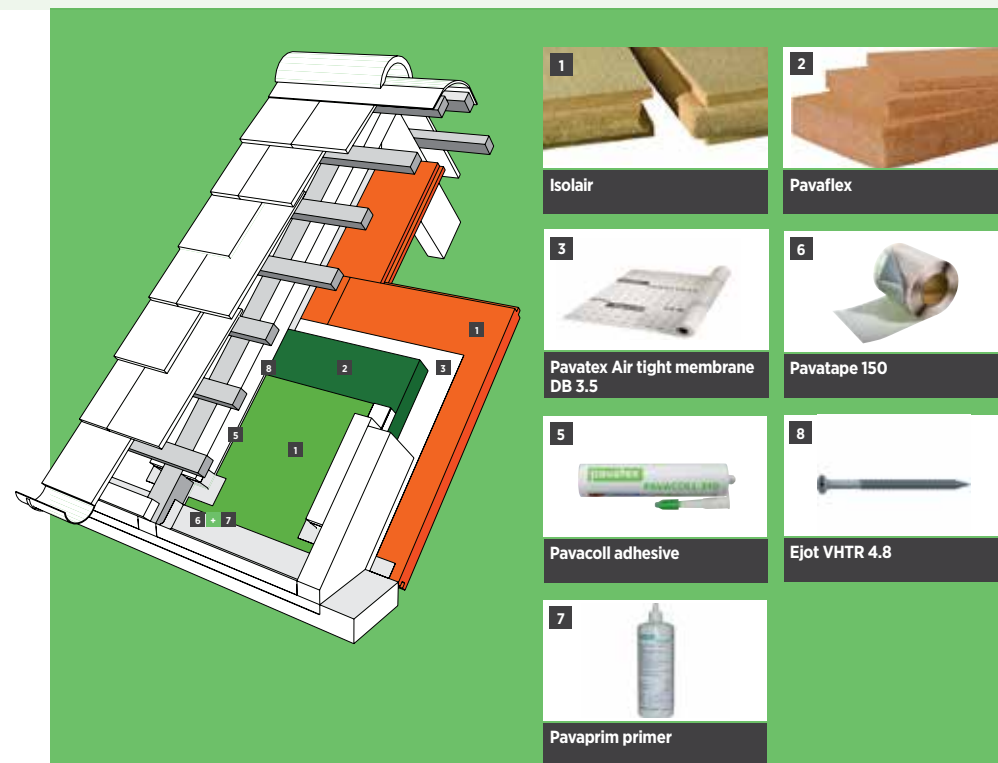
How Pavatex systems compare to standard build



Natural Building Technologies The Hangar, Worminghall Road, Oakley, Buckinghamshire HP18 9UL

01844 338338 info@natural-building.co.uk www.natural-building.co.uk

Components & Accessories for Pavatex System for internally Fitted Roof: Pitched

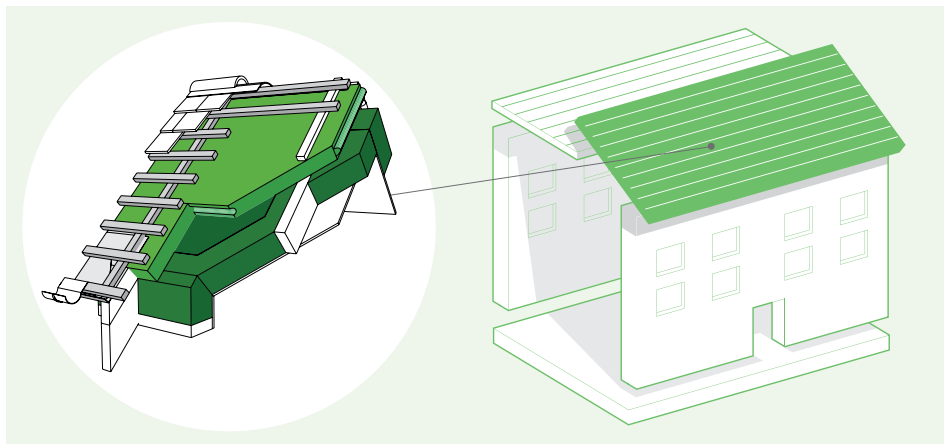


* Please refer to the contents page of this pack to find more information about the range of Pavatex products

System build up



Retrofit System for Roof Pitched Externally Fitted



System Performance

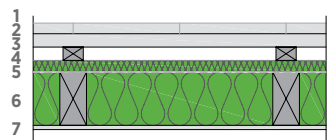
u - values 0.30 – 0.10

y - values 0.05 – 0.02

airtightness 5 – 0.6 @50pa

The system complies with the most stringent of standards – from baseline building regulations through to Passivhaus. The system is suitable for most external finishing options including metal, clay or slate tiling etc. All components for the system are available from Soprema.

Cross-section of system

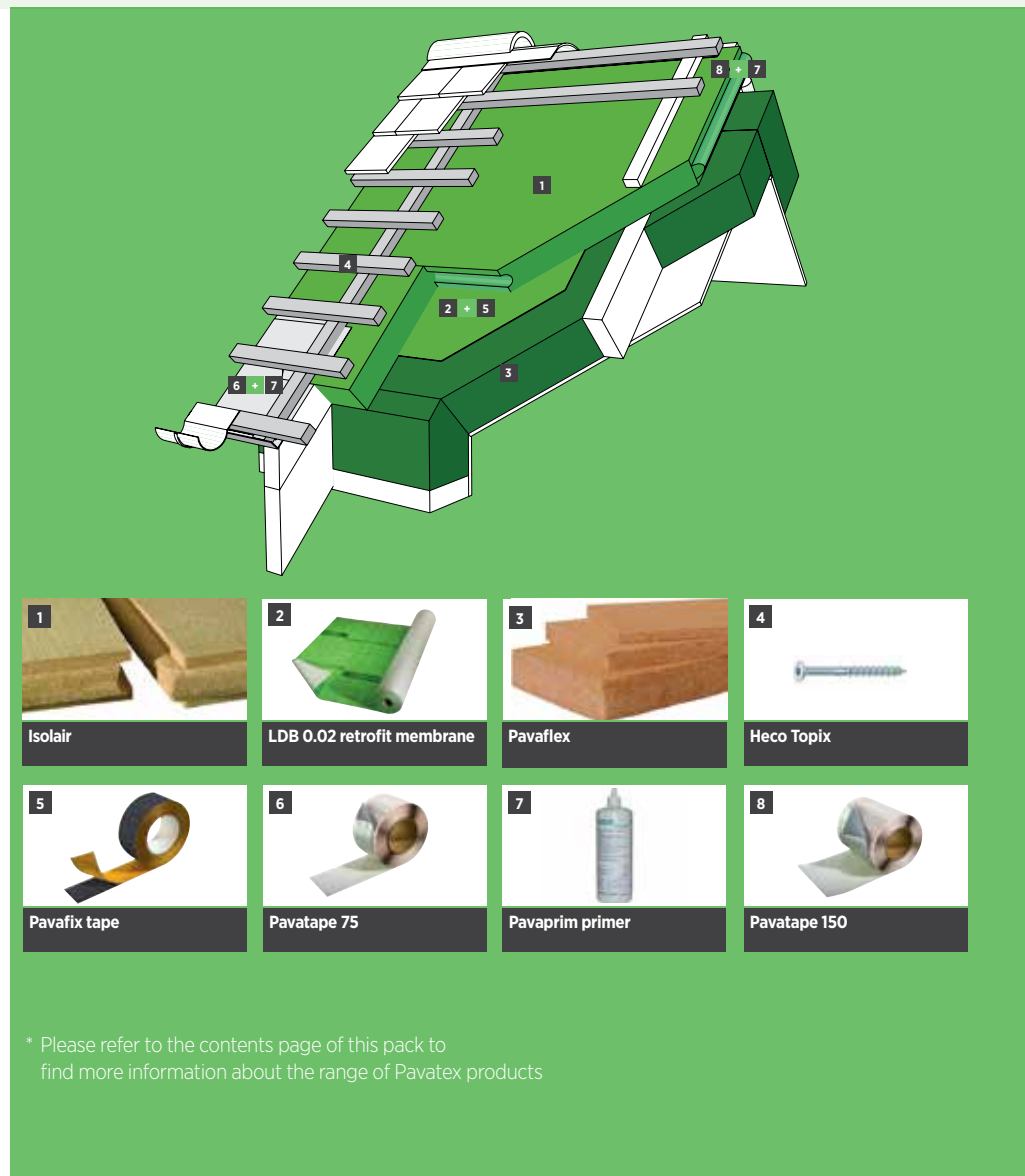


1. Existing/reclaimed/ new tiles/slates
2. Tile batten
3. New counter batten (min. 25 for ventilation).
Please contact for metal roof.
4. Isolair 30/40/60/80/100/120mm
5. Pavatex LDB 0.02 retrofit membrane
6. Pavaflex between existing rafter
7. Existing Plasterboard or similar finish

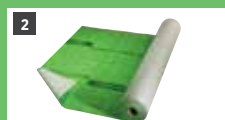
How Pavatex systems compare to standard build



Components & Accessories for Pavatex System for Externally Fitted Roof: Pitched



Isolair



LDB 0.02 retrofit membrane



Pavaflex



Heco Topix



Pavafix tape



Pavatape 75



Pavaprim primer



Pavatape 150

* Please refer to the contents page of this pack to find more information about the range of Pavatex products

System build up





SOPREMA at your service:

Do you have a question about a specific project, the products or application possibilities? Then contact our technical team.

All information can be found on:
www.soprema.co.uk

SOPREMA UK

SOPREMA House
Freebournes Road
Witham, Essex, CM8 3UN

Tel : 0330 058 0668
info@soprema.co.uk
www.soprema.co.uk

