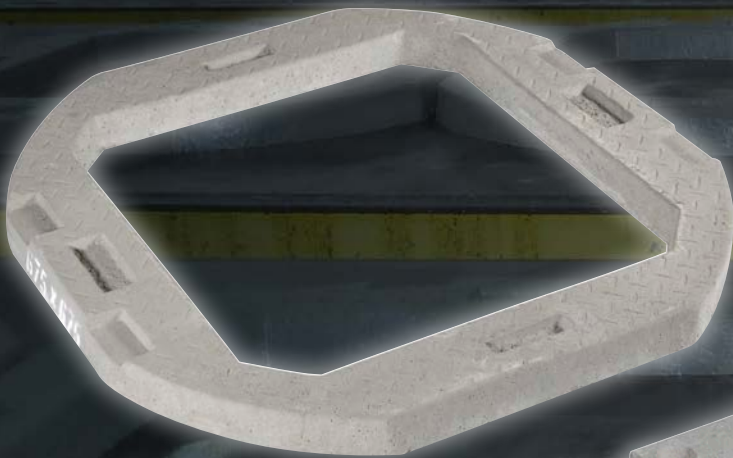
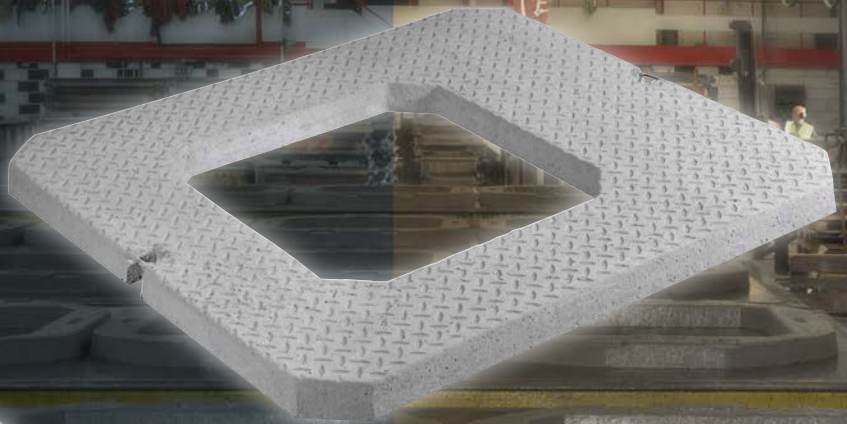


Seating Rings/Adjusting Units

Concrete frame adjusting/seating rings are reinforced 65mm deep units which can be used in place of engineering bricks to adjust the ductile or cast iron covers and frames to the required level.

They can be quickly and easily installed by semi-skilled labour and there are fewer joints which reduce the likelihood of infiltration.

Our multi-part adjusting units offer the advantage of light weight sections enabling one man to handle the units and comply with manual handling regulations.



For more information on Elite quality concrete products
phone 01952 588 885 or browse www.eliteprecast.co.uk

Seating Rings/Adjusting Units

Seating/adjusting types

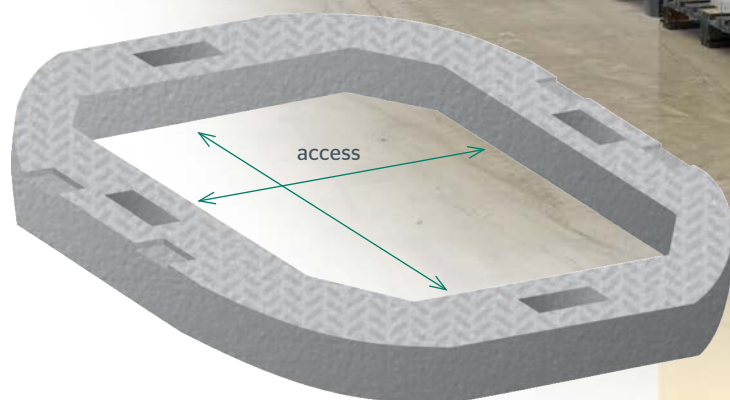
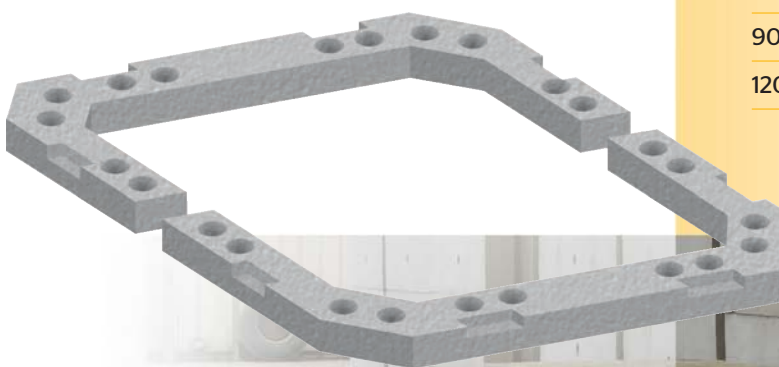
Manhole Seating Rings are manufactured to BS 5911-3 standard in the following sizes...

One-part Seating Rings

600mm x 600mm access
675mm x 675mm access
750mm x 600mm access
750mm x 750mm access
600mm x 600mm eccentric

Two-part Seating Rings

600mm x 600mm access
675mm x 675mm access
900mm x 900mm access
1200mm x 675mm access



Manhole seating rings

| Access | Weight | Pack size | Pack weight |
|--------|--------|-----------|-------------|
|--------|--------|-----------|-------------|

One-part

| | | | |
|-------------------------|------|----|--------|
| 600 x 600mm | 70kg | 15 | 1050kg |
| 675 x 675mm | 60kg | 15 | 900kg |
| 750 x 600mm | 70kg | 10 | 700kg |
| 750 x 750mm | 80kg | 10 | 800kg |
| 600 x 600mm (eccentric) | 80kg | 10 | 800kg |

Two-part

| | | | |
|--------------|------|----|-------|
| 600 x 600mm | 48kg | 15 | 720kg |
| 675 x 675mm | 56kg | 15 | 840kg |
| 900 x 900mm | 50kg | 10 | 500kg |
| 1200 x 675mm | 90kg | 10 | 900kg |

