



Sika-Trocal<sup>®</sup>  
Sika<sup>®</sup> RoofLite

**Sika-Trocal<sup>®</sup>**



# RELEASE THE ENERGY SAVING BENEFITS OF NATURAL DAYLIGHT WITH SIKA® ROOFLITE



## CONTENTS

3	The Natural Choice For Natural Light
4/5	Style, Choice and Performance
6/7	Configuration
8	Sika®RoofLite Circular and Sika®RoofLite Reflex
9	Access Solutions
10	Special Products and Industry Standards
11	Reducing CO <sub>2</sub>

# THE NATURAL CHOICE FOR NATURAL LIGHT WITH SIKA® ROOFLITE



WHEN YOU CHOOSE A SIKA® ROOFLITE, YOU CHOOSE A SUPERBLY ENGINEERED ROOFLIGHT UNIT DESIGNED AND MANUFACTURED BY INDUSTRY SPECIALISTS, WHO ARE THE UK'S LARGEST MOST INNOVATIVE ROOFLIGHT COMPANY.

Choosing a Sika®RoofLite provides assurance of quality craftsmanship and the security of dealing with an established company with over 50 years' industry experience, full technical support from product selection through to installation, and complete after-sales back up.

It also means that each Sika®RoofLite rooflight has been developed by an in-house R&D team, to deliver exceptional functionality, guaranteed performance, and contemporary design.

And, to ensure that excellent design translates to an excellent product every-time, each Sika®RoofLite is manufactured in the UK in environmental and quality accredited facilities and backed by comprehensive guarantees.

### INDUSTRY STANDARDS

Sika®RoofLite rooflights are manufactured to the following industry standards:

- Class B non-fragility, in accordance with ACR[M]001:2005, providing safe, robust products, which are resilient to impact and accidental damage
- A thermal performance well in excess of the requirements of Part L of the Building Regulations, for a more thermally efficient building, lower carbon emissions, and a positive contribution to BREEAM ratings, especially when combined with artificial lighting controls
- To comply with the requirements of BS EN 1873:2005, ensuring reliable all-weather performance
- The fire requirements as set out in the UK Building Regulations
- Ventilation meets the requirements of BS EN 13141 Part 1 2004, for air flow, air leakage and weather tightness. A range of options, including both background and purge ventilation, can assist in satisfying the requirements of Part F as set out in the UK Building Regulations
- ISO 9001 and ISO 14001



# SIKA® ROOFLITE ROOFLIGHTS COMBINE STYLE, CHOICE AND EXCEPTIONAL PERFORMANCE



### CONTEMPORARY STYLE

Sleek, contemporary aesthetics, inside and out, have been central to the design vision for Sika®RoofLite. The clean lines complement the glazing, giving the overall impression of a modern, stylish rooflight feature. An architectural aluminium security frame on Sika®RoofLite Ultra conceals the security fixings, for a superior finish. Internally, all cabling and actuators can be hidden within the kerb on mains powered units, for an uninterrupted streamlined lightwell which contributes to the overall design architecture of internal spaces.

### EASE OF INSTALLATION

Ease of installation has been a key consideration in the redesign of Sika®RoofLite. Every Sika®RoofLite is delivered complete and ready to fit. The new multi-wall kerb is robust, and resilient to damage during installation. The kerb foot has been specially designed to allow the roof covering to be finished without the need for any timber fillets. We have incorporated a preapplied adhesive tape, which holds the Sika-Trocal membrane in place during installation, and means no additional adhesive is required. The factory fitted membrane clamp on the kerb acts to prevent peel back of the roof covering once fitted. \*

\* On specific types only

### HIGH INSULATION

We recognise that our rooflights have an important part to play in the energy efficiency of your building, so Sika®RoofLites are designed to be insulated without compromising on the quality of natural light transmission.

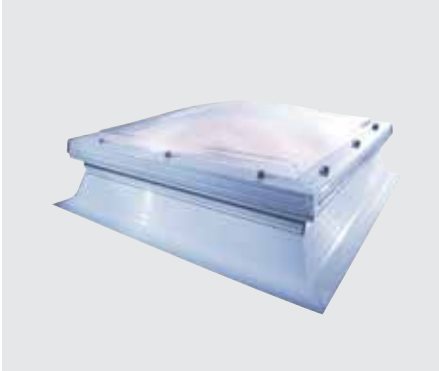
A new multi-wall kerb has been incorporated, to achieve higher levels of insulation. Full insulation across the whole width of the Sika®RoofLite (including the fixing flange), on triple skin, and better, glazing variants, provides excellent thermal performance and minimizes the risk of condensation. Sika®RoofLites can exceed the requirements of Part L of the Building Regulations, and help to achieve BREEAM credits.

### NOISE REDUCTION

We thoroughly understand the acoustic requirements for Sika®RoofLite and have developed an Acoustics Pack for use in applications where rain or external noise are a consideration. Our acoustics solutions may be specified in these instances, to provide noise insulation and achieve BREEAM credits.

# THE FLEXIBILITY TO SPECIFY THE ROOFLIGHT YOU NEED FOR ANY APPLICATION

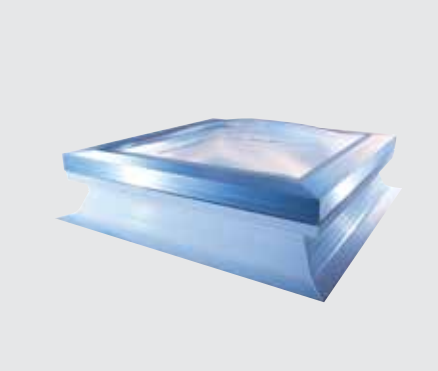
STARTING WITH THE SIKA®ROOFLITE TRADE AND ARCHITECTURAL ULTRA, AND STEPPING UP TO THE SIKA®ROOFLITE GLASS, THE TOP SPECIFICATION ROOFLIGHT, EACH MODEL FEATURES IMPROVED PERFORMANCE AND STYLING.



### SIKA® ROOFLITE TRADE - STANDARD DOME

Sika®RoofLite Trade is the standard specification dome unit, providing excellent insulation. The triple skin polycarbonate glazing option exceeds the thermal requirements of Part L with a centre pane U-value of 1.8 W/m²K and a Ud-value (thermal efficiency of the dome and kerb) as low as 1.26 W/m²K for a 600 x 600mm dome, up to 1.52 W/m²K for a 2400 x 1800mm dome.

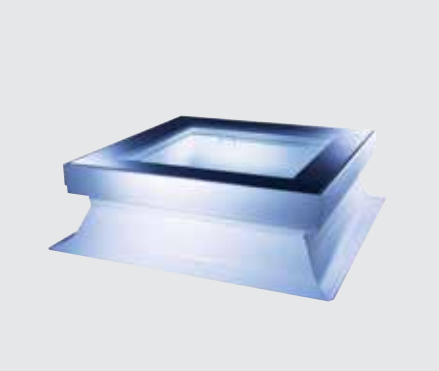
- Contemporary low rise profile
- Saves energy with options to reduce the Ud-value to as low as 1.26W/m²K
- Full insulation across the whole width of the rooflight (including the fixing flange), on triple skin, and better, glazing variants to minimise risk of condensation
- All power components are discreet for a streamlined lightwell
- Extensive options to satisfy requirements for acoustics, ventilation and light transmission
- For ease of installation, the tapered kerb foot does not require timber fillets, and a preapplied adhesive tape holds the membrane in place during installation, on specific types only



### SIKA® ROOFLITE ULTRA - ARCHITECTURAL DOME

Sika®RoofLite Ultra delivers maximum security and high insulation in a sleek, stylish design package. Tamper-proof fixings are concealed beneath a modern aluminium security frame, and a secret lock system allows domes to be installed and locked securely into place, providing the highest possible security level.

- The contemporary low rise dome design is complemented by a stylish aluminium frame, which is available in a silver anodised finish, or powder coated to any standard RAL colour
- Saves energy with options to reduce the Ud-value to as low as 0.95W/m²K
- Unique glazing cassette in triple and quad skin domes, minimises the risk of condensation
- All power components are discreet for a streamlined lightwell
- Extensive options to satisfy requirements for acoustics, ventilation and light transmission
- For ease of installation, the tapered kerb foot does not require timber fillets, and a preapplied adhesive tape holds the membrane in place during installation
- Security fixings are concealed for maximum security and complete peace of mind
- The secret lock system locks the dome into place, and can only be opened with the Sika®RoofLite security key



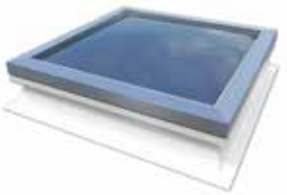
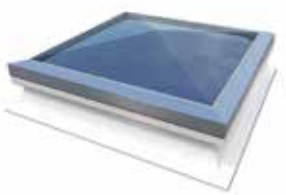
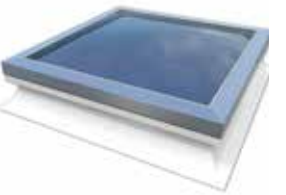
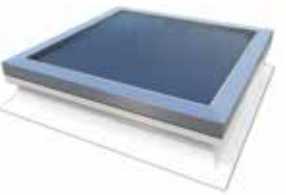
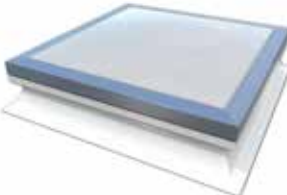
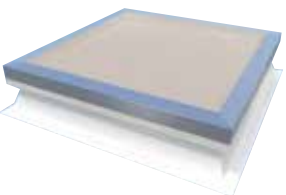

### SIKA® ROOFLITE GLASS - FLAT GLASS

Sika®RoofLite Glass features an ultra-modern flat glass design, which allows natural daylight to flood into a building. Ensuring the ultimate in performance, the thermally efficient double glazed unit is framed by a silver anodised aluminium frame, which combines to deliver both high-end design and the best standards in security and safety.

- The flush flat glass design provides an attractive feature, particularly on overlooked roofs
- The multi-wall kerb features thermally efficient walls, which also contributes to high insulation levels, providing a centre pane U-value¹ of 1.1W/m²K and a Ud value of 1.25 W/m²K for the whole roof light
- Security fixings are concealed for maximum security and complete peace of mind
- The secret lock system locks the glass into place, and can only be opened with the Sika®RoofLite security key
- Improved acoustic performance

# SIKA® ROOFLITE DESIGN OPTIONS

OFFERING THE WIDEST POSSIBLE FLEXIBILITY, SIKA®ROOFLITE CAN BE INDIVIDUALLY CONFIGURED TO THE REQUIRED SIZE, IN A RANGE OF GLAZING, VENTILATION AND OPENING OPTIONS TO SUIT YOUR APPLICATION.

LOW RISE DOME	LOW RISE PYRAMID	CLEAR - HIGH VISIBILITY AND LIGHT TRANSMISSION	TEXTURED - PRIVACY AND LIGHT TRANSMISSION
			
OPAL - PRIVACY, DIFFUSED LIGHT AND SOLAR CONTROL	BRONZE - SOLAR CONTROL	OPENING OPTIONS	
			

### GLAZING

Glazed with Marlon FSX Longlife polycarbonate, and available in double, triple and quad skin units, depending on the level of thermal insulation required.

**Additional glazing options include:**

- Double glazed glass inner glazing (standard or argon filled), with improved Ud-values, acoustics and aesthetics
- 25mm structured polycarbonate inner glazing, with improved thermal performance

### OPENING OPTIONS

- Manual opening with extension pole
- Powered opening
- Solar powered openings
- Powered opening with RF remote control handset
- Powered opening with RF remote control handset and rain sensor
- Access hatch - lockable from the inside, this gas strut assisted opening unit can be used to gain access to the roof, used in conjunction with a suitable ladder/other means of access (not supplied)

### SIZE AND SHAPE

Available in standard sizes from 600x600mm up to 2400x1800mm, with a choice of low rise dome or low rise pyramid shaped glazing units.

# SIKA® ROOFLITE DESIGN OPTIONS

### VENTILATION

- Trickle Vents (manual) - standard specification
- Automatic (humidity controlled) - superior
- High extraction ventilation

### KERB OPTIONS

- Sika®RoofLite Standard kerb allows a height to roof covering termination of 150mm
- Sika®RoofLite Tall Kerb allows a height to roof covering termination of 300mm (ideal for refurbishment projects where insulation is being added on top of the existing roof, and for tapered insulation projects)
- Sika®RoofLite GRP soaker available for metal clad roof applications

In comparison to traditional kerbs, the steepness allows increased glazing of the Sika®RoofLite, providing significantly more daylight into the area below.

### ACCESSORIES

- Kerb adaptor allows standard sized domes to be fitted on non-standard size upstands
- Security grille
- Telescopic opening poles (to a maximum extension of 3m)
- Power pleated blinds

### ACOUSTICS PACK

The Acoustics Pack should be specified where a reduction in rain or external noise transmission is required (not available with ventilated or opening domes).

# SPECIAL PRODUCTS TO SUIT YOUR APPLICATION

# SIKA® ROOFLITE IS ALSO AVAILABLE IN A SELECTION OF ACCESS HATCHES

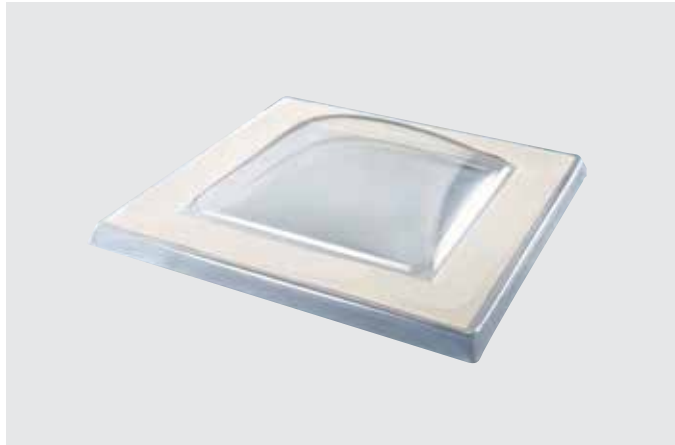
## SIKA® ROOFLITE CIRCULAR



Sika®RoofLite Circular, as its name suggests, is our round glazing unit, which is specified for it's distinct styling and character. It features a strong and robust GRP kerb.

- Circular dome option
- Robust and weatherable GRP kerb
- Double and triple skin units available

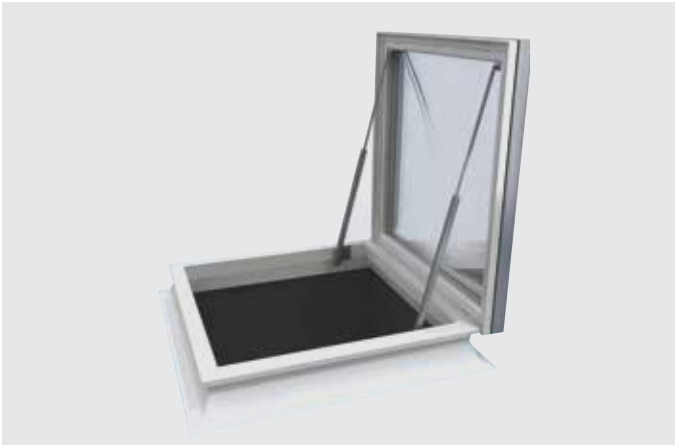
## SIKA® ROOFLITE REFLEX



Sika®RoofLite Reflex is a glazing only unit, designed specifically for refurbishment projects where only the glazing needs to be replaced. The unit is supplied with a fixing kit, including weathertight washers and cover plugs. Manufactured from Marlon FSX Longlife polycarbonate, this glazing unit is up to 200 times stronger than glass. The high resistance to breakage and adverse weather conditions means Sika®RoofLite Reflex is very safe and reliable.

- Dome and pyramid options
- Can be mechanically fixed to existing kerbs without a kerb adaptor
- Single, double and triple skin units available
- Available with standard 70mm or 100mm wide flange options

## ACCESS HATCHES



Sika®RoofLite includes a range of access hatches for each of the Trade and Ultra rooflights. Hatches use gas springs to facilitate a 90° opening. The access hatches are configured to match a range of specifier's requirements, including insulation, security, and light transmission.



# A RANGE OF SIKA® ROOFLITES, FOR WHEN THE JOB'S A LITTLE LESS ORDINARY



SIKA®ROOFLITE COMPRISES A RANGE OF SPECIAL PRODUCTS WHICH HAVE BEEN DEVELOPED OVER TIME TO FULFIL DISTINCT AND SPECIFIC MARKET REQUIREMENTS THAT ARE A LITTLE OUT OF THE ORDINARY.

The comprehensive range of Sika®RoofLite rooflights allows for architects, specifiers, contractors and building owners to incorporate natural daylight as an integral design feature of the building. Sika®RoofLite not only achieve the architectural vision of the facility, but can completely satisfy current building regulations and sustainability targets. Sika®RoofLites are the ideal way to create architecturally impressive roof glazing in a variety of shapes, sizes, frame colours and glazing options. Sika®RoofLite are also available in an extensive range of glazing materials, including polycarbonate, GRP, glass and PVC.

## REDUCING CO<sub>2</sub>



IN MOST BUILDINGS, SAVINGS CONTINUE TO BE ACHIEVED AS THE ROOFLIGHT AREA ACCOUNTS FOR UP TO 20% OF THE FLOOR AREA.

### In buildings used primarily during daylight hours:

- The savings are significant, as the rooflight area increases up to 15%
- When illumination levels are relatively low, there are further savings as the rooflight area is increased, however any increase above 15% is relatively minor
- When illumination levels are high, there are significant savings as the rooflight area increases up to 20%

### In buildings used 24 hours a day:

- There are savings as the rooflight area increases up to 15%
- When illumination levels are relatively low, there are further savings as the rooflight area is increased, however any increase above 15% is relatively minor. Additionally, as the rooflight area increases further to 20%, there is a very slight increase in CO<sub>2</sub> emissions
- When illumination levels are high, there are savings as the rooflight area is increased up to 20%. However, when the rooflight area is increased above 15%, the further savings are relatively minor

In most buildings the optimum rooflight area will be around 20% of floor area, or in some cases, a reduced area of 15% may seem less optimum, however it will achieve maximum overall savings in energy use and CO<sub>2</sub> emissions.



National Association of Rooflight Manufacturers  
- Designing with Rooflights and Controlled Artificial Lighting to Reduce CO<sub>2</sub> emissions  
- Supporting the requirements of Building Regulations Part L2A & L2B.



# SIKA FULL RANGE SOLUTIONS FOR CONSTRUCTION:



**WATERPROOFING**



**CONCRETE**



**REFURBISHMENT**



**MERCHANT**



**SEALING AND BONDING**



**FLOORING**



**ROOFING**



**INDUSTRY**

## WHO WE ARE

Sika Limited and Sika Ireland Limited are part of the global Sika Group, specialising in the manufacture and supply of chemical based products. Sika have a leading position in the development and production of systems and products for bonding, sealing, damping, reinforcing, and protecting in the building sector and the motor vehicle industry. Sika has subsidiaries in 97 countries around the world and manufactures in over 190 factories. With over 17,000 employees Sika generates annual sales of CHF 5.75 billion (£4.69bn). We are also committed to providing quality, service, safety and environmental care.

In the UK and Ireland, we provide market-leading solutions for concrete, waterproofing, roofing, flooring, refurbishment, sealing & bonding, and industry, and have manufacturing sites in Welwyn Garden City, Preston, Leeds and Dublin with more than 700 employees and a turnover of more than £220 million.

The information, and, in particular, the recommendations relating to the application and end use of Sika® products, are given in good faith based on Sika's current knowledge and experience of the products when properly stored, handled and applied under normal conditions. In practice, the differences in materials, substrates and actual site conditions are such that no warranty in respect of merchantability or of fitness for a particular purpose, nor any liability arising out of any legal relationship whatsoever, can be inferred either from this information, or from any written recommendations, or from any other advice offered. The proprietary rights of third parties must be observed. Please refer to our homepage [www.sika.co.uk](http://www.sika.co.uk) for our current standard terms & conditions applicable to all orders. Users should always refer to the most recent issue of the Product Data Sheet for the product concerned, copies of which will be supplied on request.



FM 12504

EMS 45308

OHS 585274

## SIKA LIMITED

Sika-Trocal  
Watchmead  
Welwyn Garden City  
Hertfordshire, AL7 1BQ  
United Kingdom

## Contact

Phone +44 1 707 358500  
Fax +44 1 707 329129  
E-Mail [sika-trocal@uk.sika.com](mailto:sika-trocal@uk.sika.com)  
[www.sikatrocal.co.uk](http://www.sikatrocal.co.uk)  
@SikaTrocal

## SIKA IRELAND LIMITED

Sika House  
Ballymun Industrial Estate  
Dublin 11, D11 DA2V  
Ireland

## Contact

Phone +353 1 862 0709  
Fax +353 1 862 0707  
E-Mail [info@ie.sika.com](mailto:info@ie.sika.com)  
[www.sika.ie](http://www.sika.ie)

# Sika-Trocal®

